



DVI Sync Sending Card

S20 Pro

Product Specifications

Version: Ver.1.0

Statement

Dear user friend , thanks for choosing Shanghai Xixun Electronic Technology Co. , Ltd. (hereinafter referred to as Xixun Technology) as your LED advertising equipment control system. The main purpose of this document is to help you quickly understand and use the product. We strive to be precise and reliable when writing the document, and the content may be modified or changed at any time without notice.

Copyright

The copyright of this document belongs to Xixun Technology. Without the written permission of our company, no unit or individual may copy or extract the content of this article in any form.

Trademark



is a registered trademark of Xixun Technology.

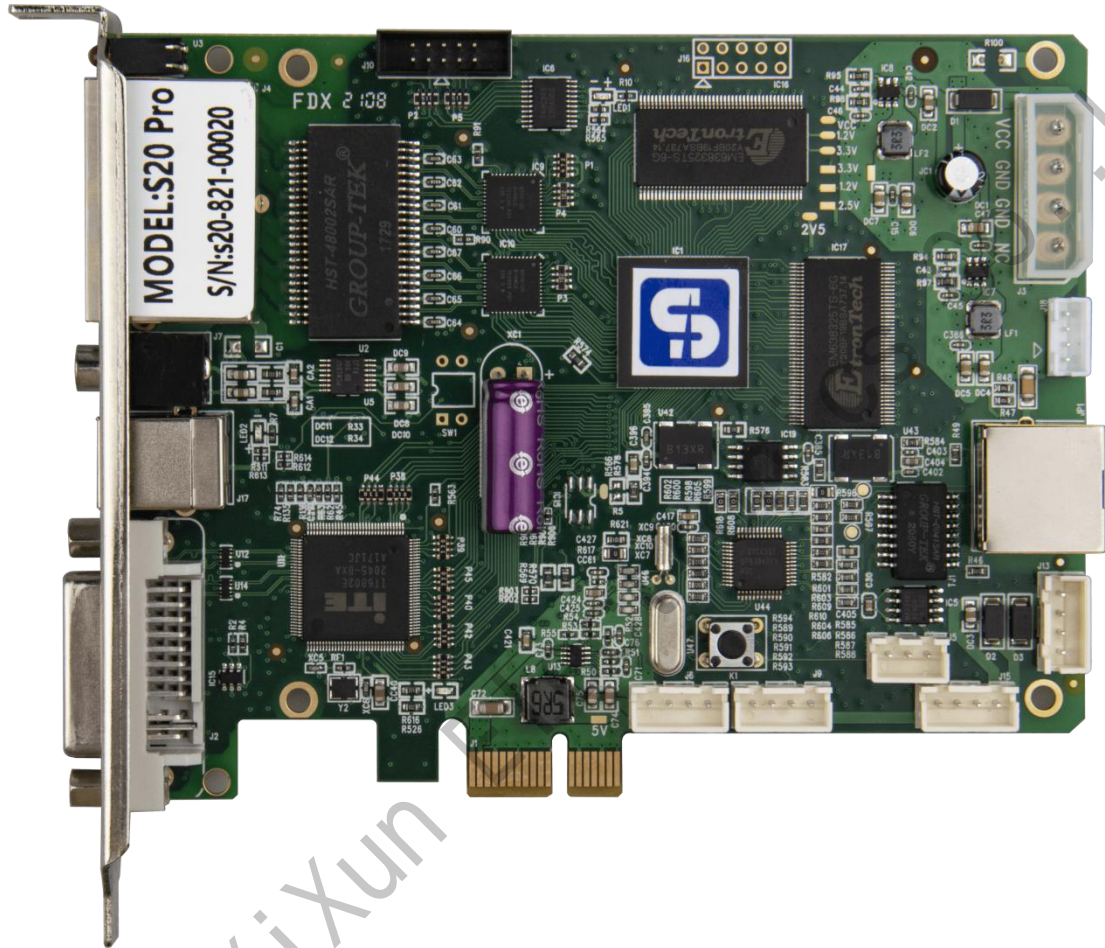
Update Record

No.	Version	Update	Revise
1	Ver.1.0	Initial Release	2021.08.31

Note: The document is subject to change without prior notice.

Shanghai Xixun Electronics Co., Ltd.

Product Picture



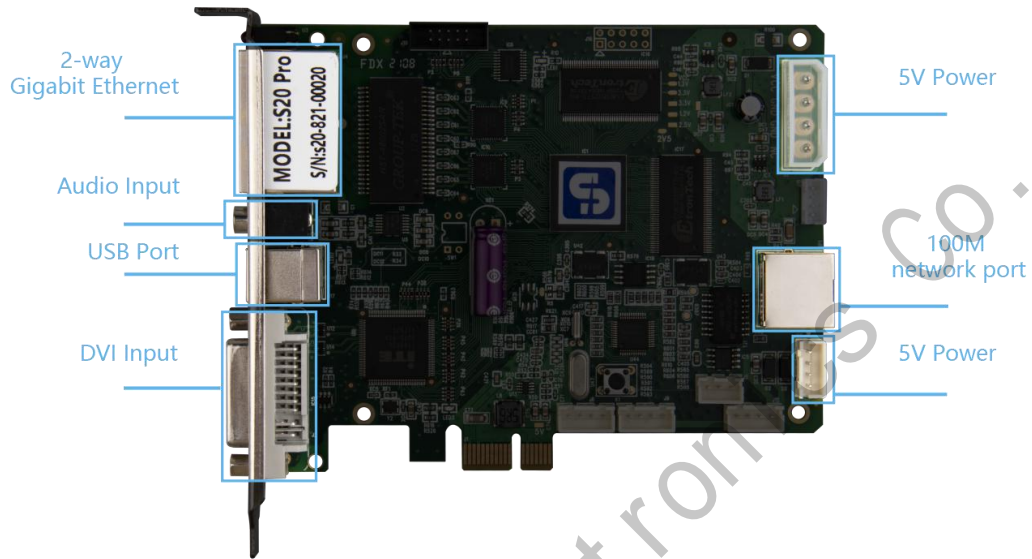
Shanghai Xixun

Functions

1. One DVI video input;
2. Dual Ethernet output;
3. USB interface, can cascade multiple sending cards on the same PC to control;
4. Multiple resolutions supported: 640×480、800×600、1024×768、1280×1024、1280×720、1280×800、1366×768、1600×1200、1920×1080、2048×1152、2560×960, also support resolution readback function;
5. A single sending card can carry 1.3 million pixels, a single network port can carry 650,000 pixels, and the image position can be set arbitrarily;
6. Support three ways of taking electricity;
7. Support chroma restoration function;
8. With DVI dual backup function;
9. One 3.5mm headphone jack audio input.

Interface Definition

Interface Definition:



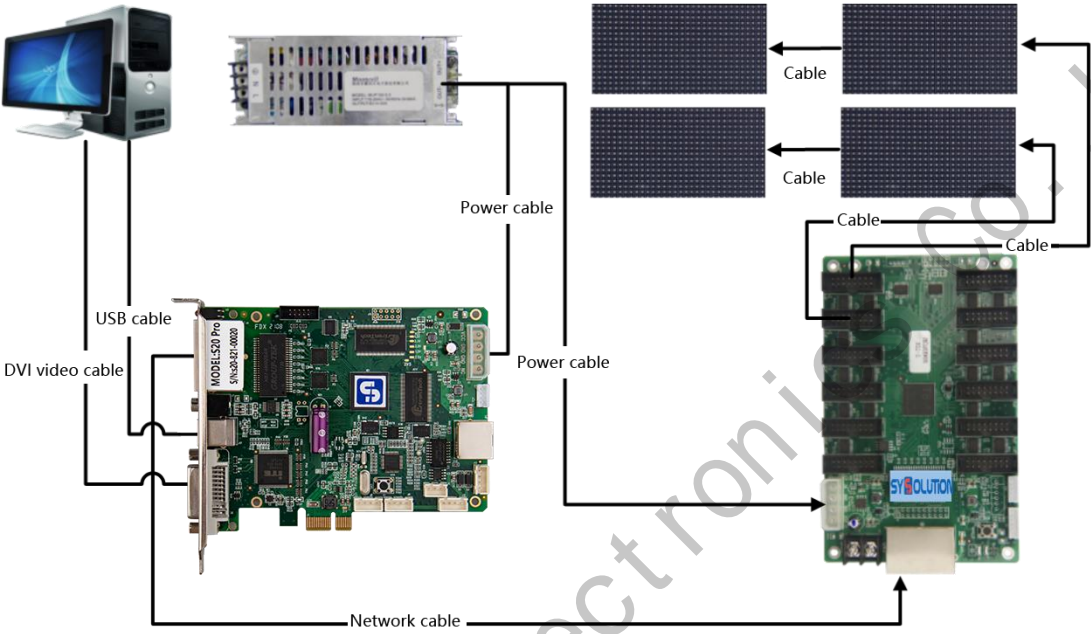
J3 Definition

Pin	1	2	3	4
Definition	VCC	GND	GND	NC

J13 Definition

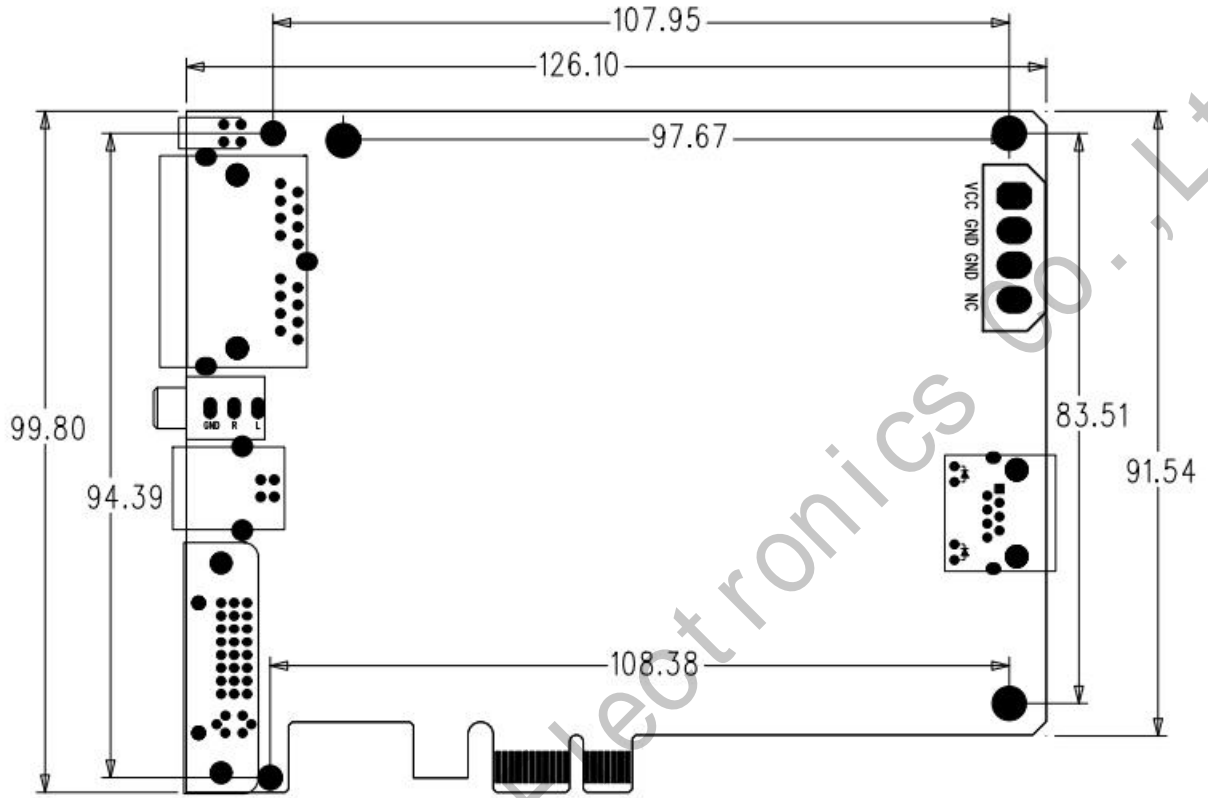
Pin	1	2	3	4
Definition	VCC	VCC	GND	GND

Connection Diagram



Shanghai Xixun Electronics Co., Ltd.

Dimensions



Unit: mm

Working Parameter

Working current	0.6A (Typical value) 1.0A (Max value)
LED type	Single/Double/Full color、 Real pixels/Virtual pixels
Number of receiving card(One Ethernet port)	240 (One Ethernet port)
Data port	Gigabit Ethernet
Protective current	3.0A
Working voltage	3.5V – 6V
Working temperature	-10°C ~+ 65°C
Working temperature limit	-20°C ~+75°C
Working humidify (%)	0%~95%

Cautions

1. Forbidden disassemble the product by yourself.
2. Forbidden plug or unplug PCI while power is on.



Shanghai Xixun Electronics Co., Ltd