

## Product Specifications

Single color control card E64

V2.0 20170901

## Overview

---

For signage, store, car, outdoor advertising and other information display, Huidu technology launched our E-series control card, for chain, LAN communications, and cluster management.

E64 is a series of E-series control card, E, the network port, through the network cable to update the program. In addition, there are USB interface, but also through the U disk to update the program. Low cost, cost-effective, simple software interface, easy to operate, better and rich display effect support for a variety of monochrome display.

Application software: Huidu technology sixth generation display operating software HD2016.

## Features

---

Content	Performance
Support module	Single Color/ Dual Color /Tricolor conventional scanning methods
Control range	Single color: 1024*256 (Widest 2048) Dual color: 512*256 Tricolor: 672*128
FLASH Capacity	8M Byte

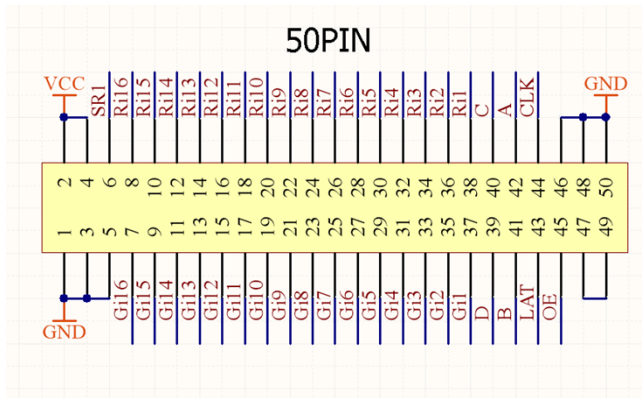
Communication Port	U-Disk、 Ethernet
Support Colorful	Full-color module can display red, green, blue, yellow, purple, green, white
Program Quantity	Max 1000pcs Programs. Can play by time section or control by buttons.
Area Quantity	20 areas with separate zone, and separated special effects and border
Display Showing	Text、 Picture、 3DText、 Animation (SWF)、 Excel、 Timing、 Temperatures ( humidity )、 Count、 Lunar calendar
Display	Sequence display, button switch, remote control
Display effect	<p>1、 Text、 Picture, Time, Timing 、 Temperature or temperature and humidity (external module required) Display</p> <p>2、 Support program border, regional border settings, custom borders</p> <p>3、 A variety of action display</p> <p>4、 More than 40 kinds of text effects display</p>

	<p>5、 Support for simple animations word</p> <p>6、 Support outline fonts, stroke fonts and other settings</p> <p>7、 Support for regional text background settings</p> <p>8、 Support Excel form directly adding</p>
Clock function	<p>1、 Support Digital Clock/ Dial Clock / Lunar Time/</p> <p>2、 Countdown /Count up, Button Countdown / Count up</p> <p>3、 The font、 size、 color and position can be set freely</p> <p>4、 Support multiple time zones</p>
Extended Equipment	Temperatures、 Humidity、 IR Remoter、 Photosensitive sensors etc.
Automatic switch screen	Support timer switch machine
Dimming	Support three brightness adjustment mode

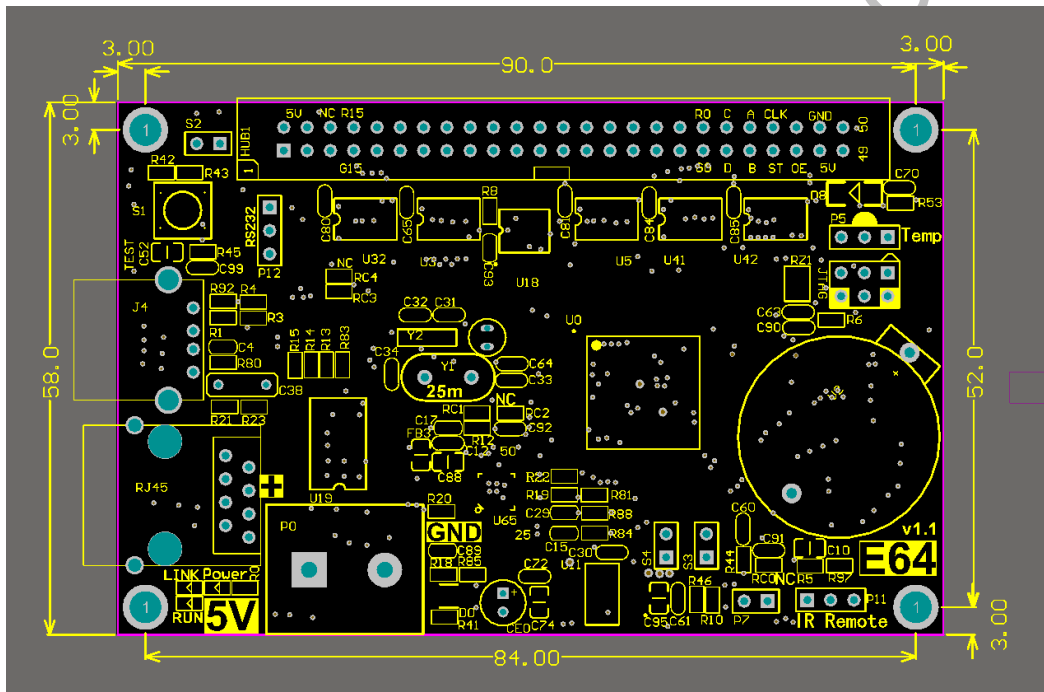
## Port Definition

---

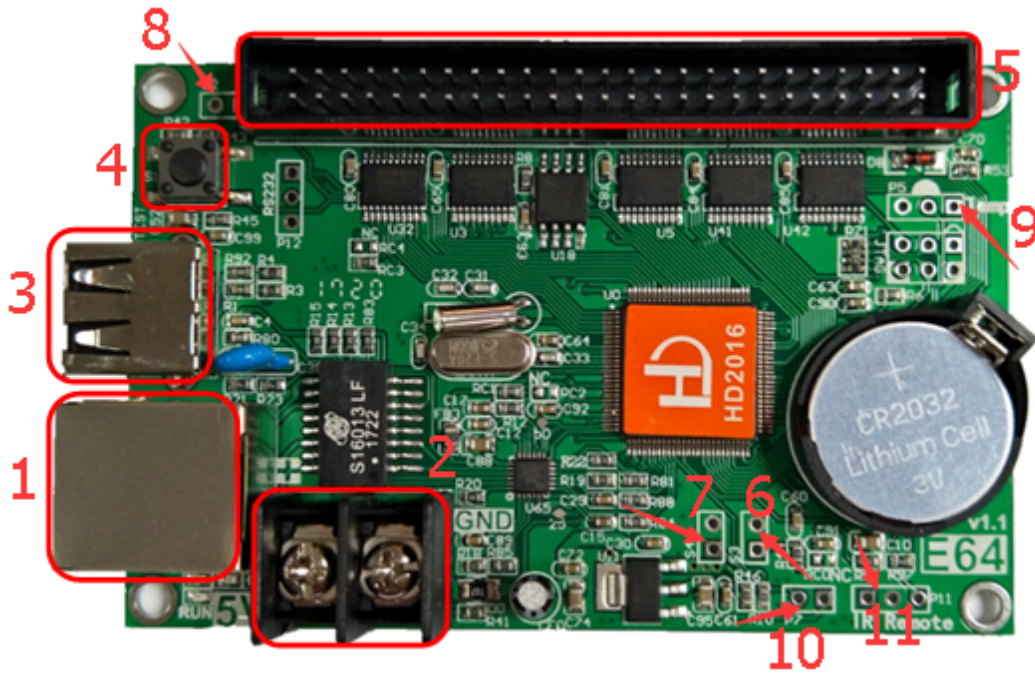
The control board has 1 OF 50PIN,



## Setup Diagram



## HD-E64 Photo



- ①: Connect the computer through Ethernet to send parameters and programs;
- ②: Power connector, connect 5V power supply;
- ③: USB ports, Updated program by U-disk;
- ④: Test button, click to switch screen test status;
- ⑤: Control board has 1 OF 50PIN, connect the display;
- ⑥: S3, Connect the point switch, switch the previous program, timer reset, count down;
- ⑦: S4, Connect the point switch, program control, timing pause, count reset;
- ⑧: S2, Connect the point switch, switch to the next program, the timer starts, count plus;

⑨: P5, Connect the temperature/humidity sensor;

⑩: P7, Connect the brightness sensor;

⑪: P11, Connect the IR, by remote control.

## Technical Parameters

---

	Minimum	Typical value	Maximum
Rated voltage (V)	4.2	5.0	5.5
Storage temperature(°C)	-40	25	105
Work environment humidity (°C)	-40	25	80
Work environment humidity (%)	0.0	30	95

## Precautions

---

- 1) To ensure that the control card is stored during normal operation, make sure the battery on the control card is not loose;
- 2) In order to ensure the long-term stable operation of the system; please try to use the standard 5V power supply voltage.