



Special Control Card For Taxi Top Sign

E26

Product Specifications

Statement

Dear user friend, thanks for choosing Shanghai Xixun Electronic Technology Co., Ltd. (hereinafter referred to as Xixun Technology) as your LED advertising equipment control system. The main purpose of this document is to help you quickly understand and use the product. We strive to be precise and reliable when writing the document, and the content may be modified or changed at any time without notice.

Copyright

The copyright of this document belongs to Xixun Technology. Without the written permission of our company, no unit or individual may copy or extract the content of this article in any form.

Trademark



is a registered trademark of Xixun Technology.

Update Record

| Serial Number | Version Number | Description of content updates | Revision Date |
|---------------|----------------|--------------------------------|---------------|
| 1 | Ver.1.0 | Initial Release | 2019.12.16 |
| 2 | Ver.1.1 | Add content | 2020.01.15 |
| 3 | Ver.1.2 | Content Change | 2021.04.14 |
| 4 | Ver.1.3 | Content Change | 2021.04.27 |
| 5 | Ver.1.4 | Add Content | 2021.09.27 |

Shanghai Xixun Electronics Co., Ltd.

Product Introduction

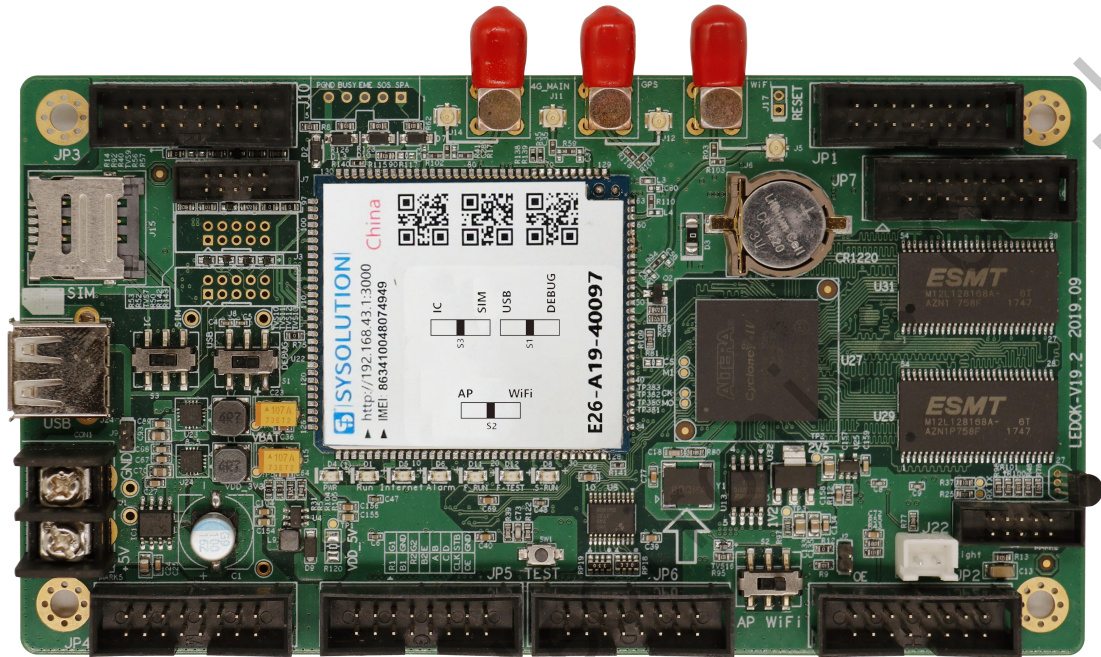
With the development of LED car displays, in some areas, it needs to support wireless transmission, remote cluster control, docking with third-party platform applications, need control cards access the network and GPS positioning through WiFi or 4G, and need to be controlled by mobile phone. Xixun E26 is tailor-made for these needs, leading the mobile car screen market. Make user control easier.

E26 uses Qualcomm MSM8909 platform solution. The MSM8909 processor is manufactured using the 28nmLP CMOS process, and the quad-core frequency is 1.1GHz. The memory supports 1GB + 8GB (compatible with 2GB + 16GB) LPDDR3. The chip is a highly integrated product, can support GSM, WCDMA, TD-SCDMA, EVDO, TDD-LTE, FDD-LTE and other standards.

Features

- a. Integrated 6 + 1 HUB75E interfaces;
- b. Dedicated for taxi full color screen;
- c. Onboard WiFi module, realize wireless communication, support AP mode, station mode;
- d. Support secondary development, support remote cluster control of cloud platform;
- e. Built-in Web Server, support for local web page production, support computer, iPhone, Android phone, tablet stand-alone program editing, cross-platform system fully compatible;
- f. Support full color static to 32 scan module;
- g. Industrial-strength onboard Flash: 8GB

Product Appearance



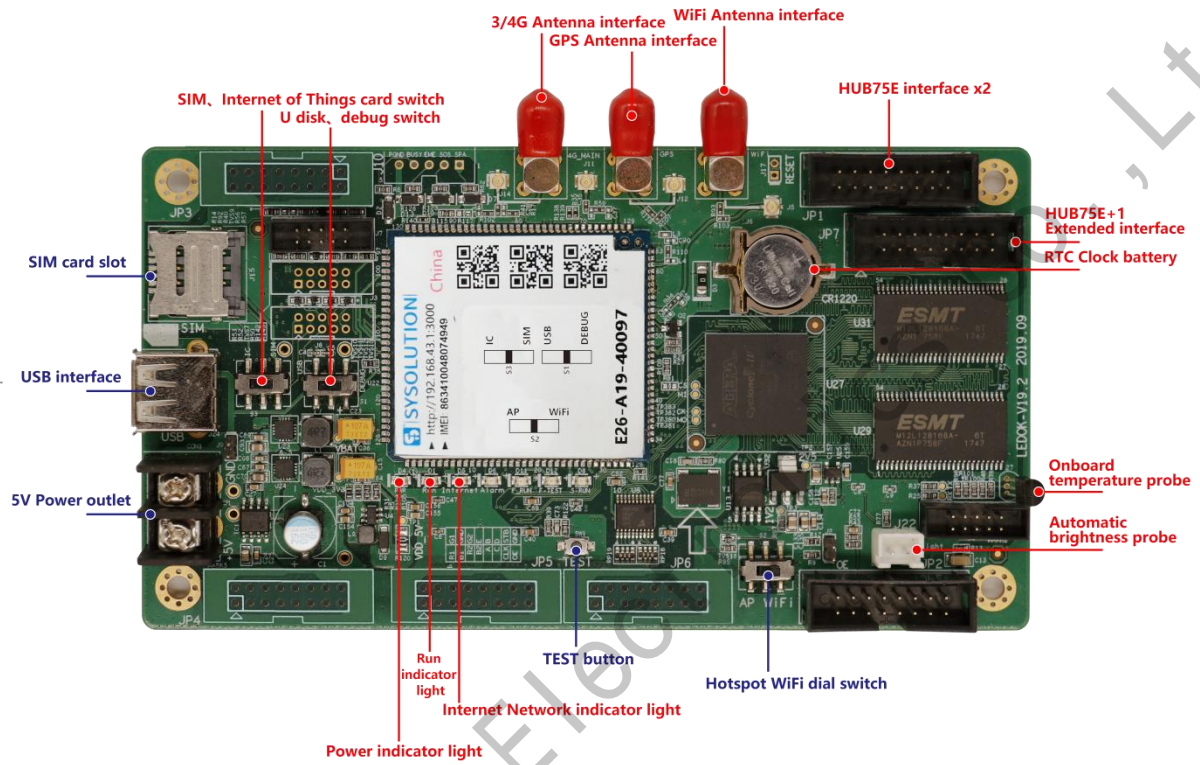
Product Parameters

| Product Features | Description | | | |
|------------------------------------|--|--|---|---|
| Model | E26-CH (No Com) | E26-NA | E26-EU | E26-LA |
| Load Pixels | 256*192 No support for cascade receiving card (with six 75 interfaces) | | | |
| Communication | 4G full Netcom, WiFi, U disk | | | |
| Platform | Qualcomm MSM8909 | | | |
| CPU | Quad-core A7 (32bit) Quad core 1.1GHz | | | |
| GPU | A307 409.6MHz | | | |
| System Memory | 8GB Emmc+1GB LPDDR3 | | | |
| Operating System | Android 5.1 | | | |
| WiFi | IEEE 802.11b/g/n 2.4G | | | |
| GPS | GPS/Beidou/Glonass | | | |
| 3G/4G frequency band (Optional) | China FDD-LTE:B1/3/ 5/8 TDD-LTE:B38/ 39/40/41 TDSCDMA:B34 /39 WCDMA:B1/8 CDMA 1X/EVDO:BC0 GSM:B3/5/8 | North America FDD-LTE:B2/4/ 5/7/12/13/17 WCDMA:B2/4/ 5 | Eurasia FDD-LTE:B1/3/ 5/7/8/20 TDD-LTE:B38/ 40/41 WCDMA:B1/5/ 8 GSM:B3/5/8 | Latin America FDD-LTE:B1/3/ 5/7/8/28 TDD-LTE:B40 WCDMA:B1/2/ 5/8 GSM:B2/3/5/8 |

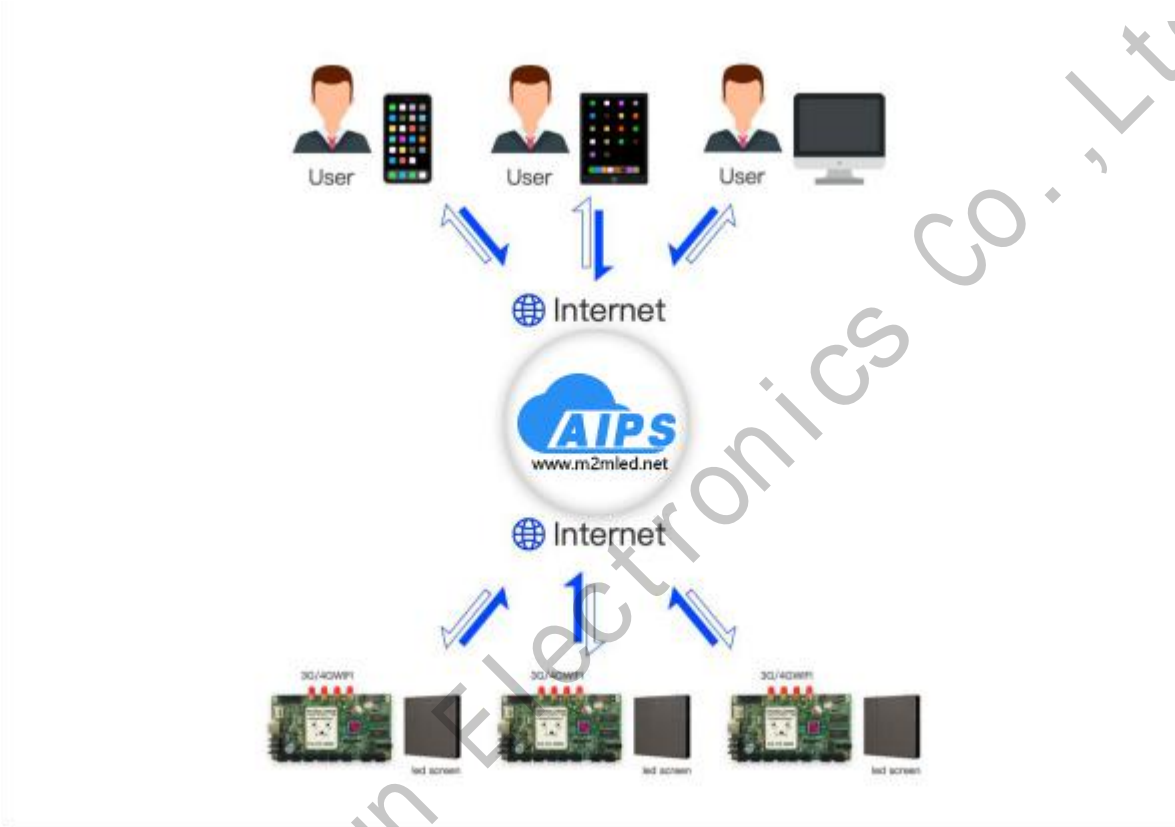
| | |
|----------------------------------|-----------|
| Audio | Support |
| Camera | Support |
| Weather Forecast | Support |
| Display content read back | Support |
| Configuration Software | Easyboard |

Shanghai Xixun Electronics Co., Ltd.

Interface Parameters



Application Diagram

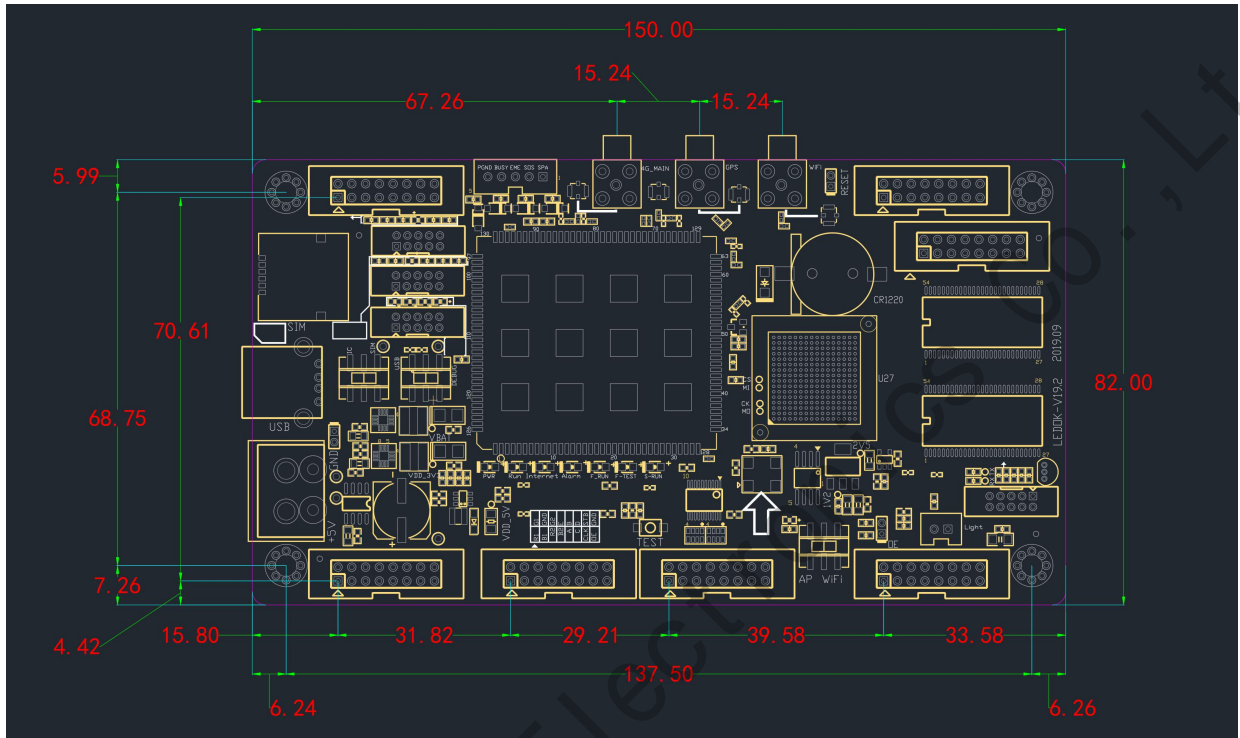


Application diagram

Working Conditions

| General Parameters | |
|----------------------------------|--|
| Working Voltage (V) | 4.5 ~ 5.5 |
| Maximum Working Current (A) | 2 |
| Maximum Working Power (W) | 10 |
| Working Temperature (°C) | - 40°C ~ + 75°C |
| Storage Temperature (°C) | -20°C ~ 70°C, recommend 5°C ~35°C |
| Working Environment Humidity (%) | 10% ~ 90%, No Condensation |
| Size (mm) | 150 (length) ×82 (width) ×19 (height) (22.5 high after cable plugging in) |
| Weight (g) | 400 |

Installation Dimensions



Unit: mm

Shanghai Xixun Electronics

Accessories

| Standard accessories | Size/Quantity |
|----------------------|---------------|
| 4G Patch antenna | 1.5m*1 |

(If you need other accessories, please place an order)

| Optional accessories | Accessories features |
|----------------------|---|
| Brightness line RL1 | Used to sense the brightness of the current environment |
| G10 | GPS Positioning antenna (length 0.8m) |
| WiFi Patch antenna | 0.8m*1 |

Matched Accessories (Optional, additional models are available according to the order)

Cautions

- a. Forbidden to disassemble the product by yourself.
- b. Forbidden to insert or remove the SIM card while the power is on.



Shanghai Xixun Electronics Co., Ltd