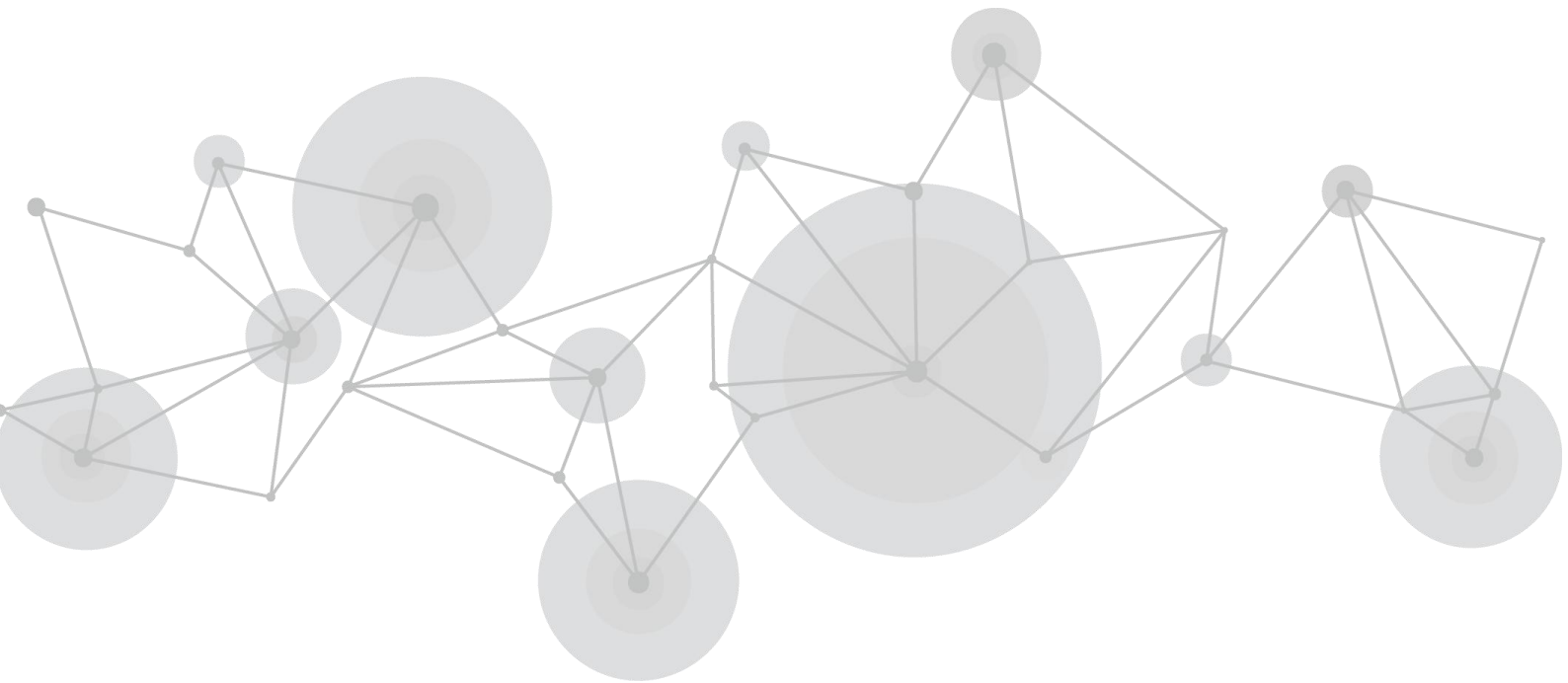


DO | The first **8K-class**
video processor



User Manual

RGBlink[®]



Article No: RGB-RD-UM-D8 E000
Revision No: V1.0

CONTENTS

CONTENTS	1
<i>Declarations</i>	2
FCC/Warranty	2
Operators Safety Summary	3
Installation Safety Summary	3
<i>Chapter 1 Your Product</i>	5
1.1 Packing Configuration	5
1.2 Product Overview	6
1.2.1 Front Panel	6
1.2.2 Rear Panel	7
1.2.3 Dimension	7
1.3 Key Features	8
<i>Chapter 2 Install Your Product</i>	9
2.1 Plug in Signals	9
2.2 Plug in Main Power	9
2.3 Turn on Your Product	9
<i>Chapter 3 Use Your Product</i>	10
3.1 Menu	10
3.1.1 Device Status	10
3.1.2 Standard	10
3.1.3 Splice	10
3.1.4 View	11
3.1.5 Advanced Settings	11
3.1.6 System Settings	11
3.2 Install XPOSE 2.0	12
3.3 XPOSE Controls D8	16
3.3.1 Login in XPOSE	16
3.3.2 Input and Output Settings	17
3.3.3 Display Management	23
3.3.4 Layer Management	27
3.3.5 Preset Management	30
3.3.6 System Setting	33
<i>Chapter 4 Order Codes</i>	37
4.1 Product	37
4.2 Options	37
<i>Chapter 5 Support</i>	38
5.1 Contact Us	38
<i>Chapter 6 Appendix</i>	39
6.1 Terms & Definitions	39
6.2 Revision History	44

Thank you for choosing our product!

This User Manual is designed to show you how to use this video processor quickly and make use of all the features. Please read all directions and instructions carefully before using this product.

Declarations

FCC/Warranty

Federal Communications Commission (FCC) Statement

This equipment has been tested and found to comply with the limits for a class A digital device, pursuant to Part 15 of the FCC rules. These limits are designed to provide reasonable protection against harmful interference when the equipment is operated in a commercial environment. This equipment generates, uses, and can radiate radio frequency energy and, if not installed and used in accordance with the instruction manual, may cause harmful interference to radio communications. Operation of this equipment in a residential area may cause harmful interference, in which case the user will be responsible for correcting any interference.

Guarantee and Compensation

RGBlink provides a guarantee relating to perfect manufacturing as part of the legally stipulated terms of guarantee. On receipt, the purchaser must immediately inspect all delivered goods for damage incurred during transport, as well as for material and manufacturing faults. RGBlink must be informed immediately in writing of any complains.

The period of guarantee begins on the date of transfer of risks, in the case of special systems and software on the date of commissioning, at latest 30 days after the transfer of risks. In the event of justified notice of compliant, RGBlink can repair the fault or provide a replacement at its own discretion within an appropriate period. If this measure proves to be impossible or unsuccessful, the purchaser can demand a reduction in the purchase price or cancellation of the contract. All other claims, in particular those relating to compensation for direct or indirect damage, and also damage attributed to the operation of software as well as to other service provided by RGBlink, being a component of the system or independent service, will be deemed invalid provided the damage is not proven to be attributed to the absence of properties guaranteed in writing or due to the intent or gross negligence or part of RGBlink.

If the purchaser or a third party carries out modifications or repairs on goods delivered by RGBlink, or if the goods are handled incorrectly, in particular if the systems are commissioned operated incorrectly or if, after the transfer of risks, the goods are subject to influences not agreed upon in the contract, all guarantee claims of the purchaser will be rendered invalid. Not included in the guarantee coverage are system failures which are attributed to programs or special electronic circuitry provided by the purchaser, e.g. interfaces. Normal wear as well as normal maintenance are not subject to the guarantee provided by RGBlink either.

The environmental conditions as well as the servicing and maintenance regulations specified in this manual must be complied with by the customer.

Operators Safety Summary

The general safety information in this summary is for operating personnel.

Do Not Remove Covers or Panels

There are no user-serviceable parts within the unit. Removal of the top cover will expose dangerous voltages. To avoid personal injury, do not remove the top cover. Do not operate the unit without the cover installed.

Power Source

This product is intended to operate from a power source that will not apply more than 230 volts rms between the supply conductors or between both supply conductor and ground. A protective ground connection by way of grounding conductor in the power cord is essential for safe operation.

Grounding the Product

This product is grounded through the grounding conductor of the power cord. To avoid electrical shock, plug the power cord into a properly wired receptacle before connecting to the product input or output terminals. A protective-ground connection by way of the grounding conductor in the power cord is essential for safe operation.

Use the Proper Power Cord

Use only the power cord and connector specified for your product. Use only a power cord that is in good condition. Refer cord and connector changes to qualified service personnel.

Use the Proper Fuse

To avoid fire hazard, use only the fuse having identical type, voltage rating, and current rating characteristics. Refer fuse replacement to qualified service personnel.

Do Not Operate in Explosive Atmospheres

To avoid explosion, do not operate this product in an explosive atmosphere.

Installation Safety Summary

Safety Precautions

For all D8 installation procedures, please observe the following important safety and handling rules to avoid damage to yourself and the equipment.

To protect users from electric shock, ensure that the chassis connects to earth via the ground wire provided in the AC power Cord.

The AC Socket-outlet should be installed near the equipment and be easily accessible.

Please refer to and follow the instruction for the save device installation and connection of device.

Unpacking and Inspection

Before opening D8 shipping box, inspect it for damage. If you find any damage, notify the shipping carrier immediately for all claims adjustments. As you open the box, compare its contents against the packing slip. If you find any shortages, contact your sales representative.

Once you have removed all the components from their packaging and checked that all the listed components are present, visually inspect the system to ensure there was no damage during shipping. If there is damage, notify the shipping carrier immediately for all claims adjustments.

Site Preparation

The environment in which you install your D8 should be clean, properly lit, free from static, and have adequate power, ventilation, and space for all components. The device should be far away from drips, so objects such as vases filled with liquid should not be placed on the device.

Chapter 1 Your Product

1.1 Packing Configuration

AC Power Cord



Network Cable



HDMI Cable



Note:

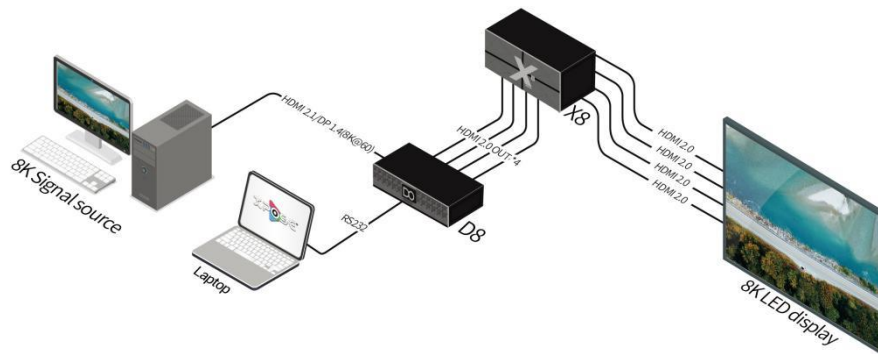
AC Power Cable supplied as standard according to destination market.

Upgrade tool package and user manual are stored in the USB disk, please keep it.

1.2 Product Overview

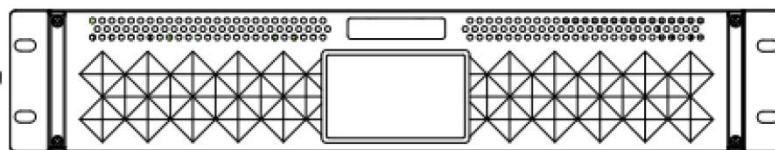
The D series has always been regarded as the leader in presentation-level image quality processing at different display stages in the industry. D8 continues to lead the display technology to become the first 8K@60-level video processor in the industry. Create a visual experience.

The D8 is equipped with a 4-inch LCD touch screen, which optimizes the overall front panel aesthetic design and optimizes the user experience. No connection is required. The front panel is controlled by touch.



D8 Application Diagram

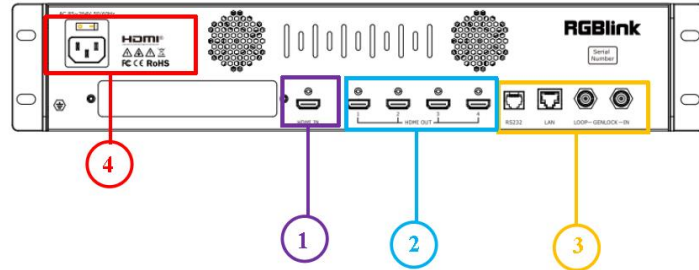
1.2.1 Front Panel



Front Panel Structure

1	4-inch LCD touch screen, which can choose switch mode.
---	--

1.2.2 Rear Panel

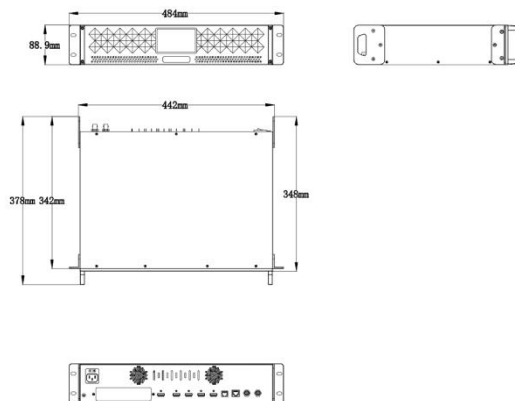


Rear Panel Structure	
1	1×HDMI 2.1 Input
2	4×HDMI 2.0 Output
3	Control interfaces with Genlock (1 In/1 Loop), LAN and RS 232
4	Slot for power supply module and power switch

1.2.3 Dimension

Following is the dimension of D8 for your reference:

Dimension: 484mm × 378mm × 88.9mm



1.3 Key Features

- 8K@60 input,HDCP 2.X
- Built-in 4" LCD touch screen
- 8K EDID management, supporting communicating custom resolution to source computer
- Genlock input and loop through
- XPOSE control, Web Server control (to be published)
- Hot swap
- Open API
- 8K@30 arbitrary unequal splicing
- Multi-interface copy output, arbitrary zoom in and out
- HDR 10 & HLG compliance

Chapter 2 Install Your Product

2.1 Plug in Signals

Connect signals to the product (ensure all the device are all power off first).Tighten connector screws/locks where provided.



Connect RS232 port of device and computer with serial cable or connect LAN port of device and computer with network cable or connect both device and computer to the same router, make sure their IP address is not completely same.

2.2 Plug in Main Power

Connect IEC cable to device and plug into wall socket. Turn on power at wall socket.



If the devices is restarted, make sure the indicator light upon the PSU module is totally out before plugging in the power.

2.3 Turn on Your Product

Turn on the power switch on the rear panel.

The system begins to work,and the TFT-LCD screen shows IP address, serial number and more.

Chapter 3 Use Your Product

3.1 Menu

Turn on the power switch on the rear panel and the touch screen will display Menu, SN , IP ,Fan Speed and Temperature.

3.1.1 Device Status

Click [Device Status] to enter the interface.

The interface displays rear panel of D8. The interface icon will turn into green if there is a signal source.

3.1.2 Standard

Click [Standard] to enter the interface.

In this interface, users can view quad output resolution.

3.1.3 Splice

Click [Splice] to enter the interface.

In this interface, users can set Output Resolution, Splice Mode and Multi-device Cascade.

Output Resolution: custom and standard optional

Splice Mode:6 layouts available. Users can also set the screen height, screen width, horizontal position and vertical position. Click [OK]/[Reset] to save/cancel the relevant settings.

Multi-device Cascade:

External Input Genlock Format: Show resolution

Genlock Output Format: Show resolution

Synchronization: Click [Synchronization] to start synchronization mode of multi-device cascade.

	Support Unequal Splicing	Support Equal Splicing	Support Equal Splicing												
8K4K(30Hz) RGB4:4:4	<table border="1"> <tr> <td>3072* 2160</td> <td>3840* 2160</td> </tr> <tr> <td>3072* 2160</td> <td>3840* 2160</td> </tr> </table>	3072* 2160	3840* 2160	3072* 2160	3840* 2160	<table border="1"> <tr> <td>3840* 2160</td> <td>3840* 2160</td> </tr> <tr> <td>3840* 2160</td> <td>3840* 2160</td> </tr> </table>	3840* 2160	3840* 2160	3840* 2160	3840* 2160	<table border="1"> <tr> <td>3072* 1536</td> <td>3072* 1536</td> </tr> <tr> <td>3072* 1536</td> <td>3072* 1536</td> </tr> </table>	3072* 1536	3072* 1536	3072* 1536	3072* 1536
3072* 2160	3840* 2160														
3072* 2160	3840* 2160														
3840* 2160	3840* 2160														
3840* 2160	3840* 2160														
3072* 1536	3072* 1536														
3072* 1536	3072* 1536														
8K4K(60Hz) RGB4:2:0	<table border="1"> <tr> <td>3072* 2160</td> <td>3840* 2160</td> </tr> <tr> <td>3072* 2160</td> <td>3840* 2160</td> </tr> </table>	3072* 2160	3840* 2160	3072* 2160	3840* 2160	<table border="1"> <tr> <td>3840* 2160</td> <td>3840* 2160</td> </tr> <tr> <td>3840* 2160</td> <td>3840* 2160</td> </tr> </table>	3840* 2160	3840* 2160	3840* 2160	3840* 2160	<table border="1"> <tr> <td>3072* 1536</td> <td>3072* 1536</td> </tr> <tr> <td>3072* 1536</td> <td>3072* 1536</td> </tr> </table>	3072* 1536	3072* 1536	3072* 1536	3072* 1536
3072* 2160	3840* 2160														
3072* 2160	3840* 2160														
3840* 2160	3840* 2160														
3840* 2160	3840* 2160														
3072* 1536	3072* 1536														
3072* 1536	3072* 1536														

3.1.4 View

Click [View] to enter the interface.

12 views can be loaded. Click [Yes/No] to confirm/cancel the option.

3.1.5 Advanced Settings

Click [Advanced Settings] to enter the interface.

EDID:

CUSTOM: 6400*2000@60,5760*1536@60 and more

RESET: Clear previous settings

Input Adjustment: Do settings of scale and crop.

Output Adjustment: Set Bit Depth and HDR of HDMI outputs.

Bit Depth: 8bit, 10bit, 12bit

HDR: ON/OFF

3.1.6 System Settings

Click [System Settings] to enter the interface.

Device Info: Display version of modules

Network Settings: Display IP Address. Subnet Mask and Gateway (Click upper right to achieve switch between AUTO and Manual.)

Fan: Set fan speed (0~100% adjustable)

Factory Reset: Click [YES] to reset

Language: English/Chinese

3.2 Install XPOSE 2.0

Environment Requirements:

Window

Processor: 1 GHz or above 32 bit or 64 bit processor

Memory: 4 GB or more

Graphics: Support DirectX 9 128M or above (open AERO effect)

Hard disk space: Above 16G (primary partitions, NTFS format)

Monitor: Resolution must be 1920x1080 pixel or above (it can not display normally if the resolution is lower than 1920x1080)

Operating system: Windows 7 or above (full version, not Ghost version or compact version)


CPU:i5 and above

Mac

Monitor: Resolution must be 1680x1050 pixel or above (it can not display normally if the resolution is lower than 1680x1050)

CPU:i5 and above



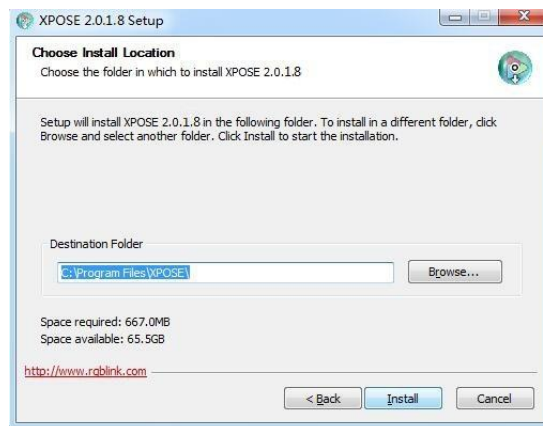
Double click  ,it will pop-up the installer language box, select the language, for example, select “English”, and click “OK” to confirm.



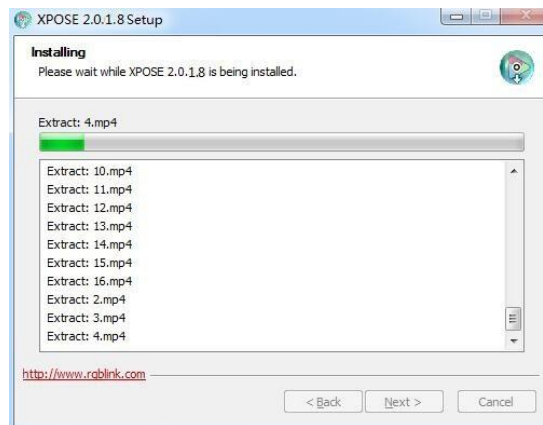
Click “Next” to install:



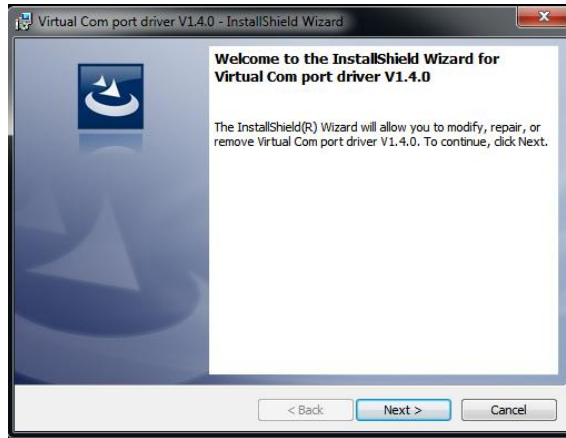
Click "Browse..." to select the XPOSE software install location:



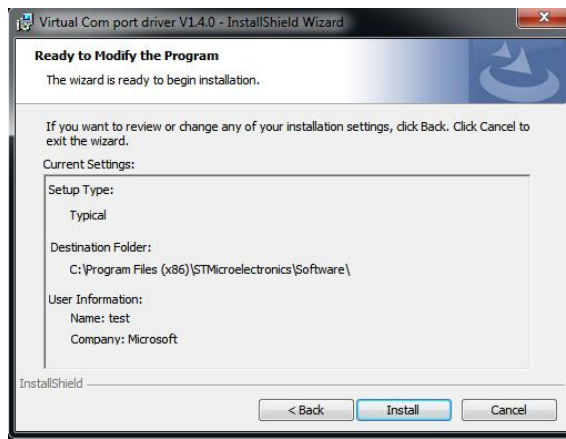
Click "Install":



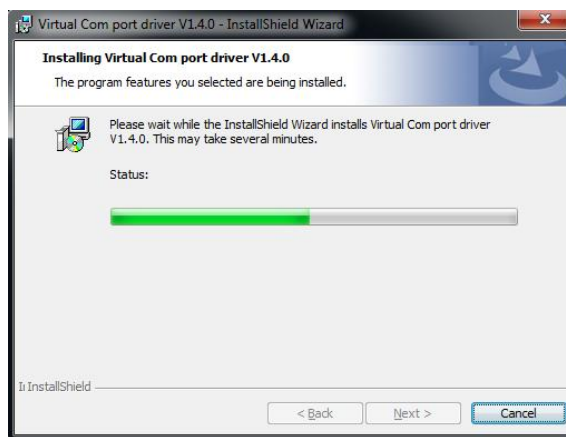
During installation, it will pop up the window of Install Shield Wizard for Virtual Com port:



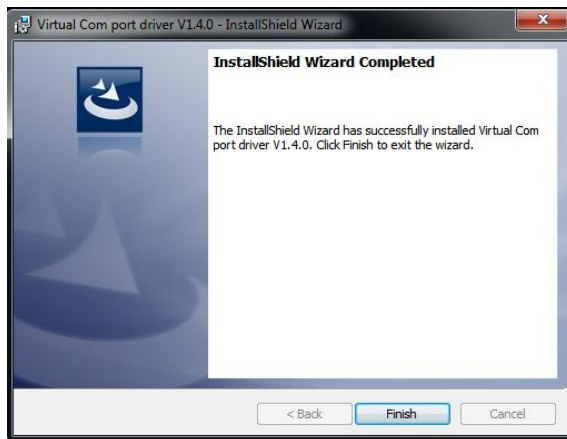
If user install the XPOSE software for the first time, click "Next"



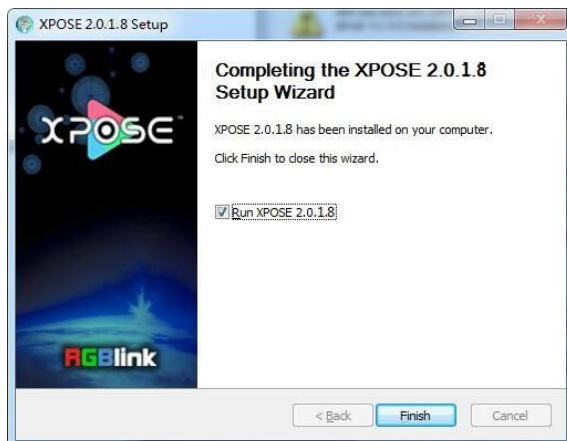
Then click "Install", as shown in the figure below:



Click "Finish" and complete the installation, as shown in the figure below:



Click "Finish" and is ready to run the XPOSE :

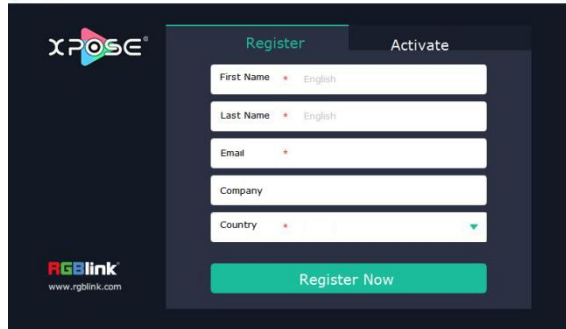


3.3 XPOSE Controls D8

3.3.1 Login in XPOSE

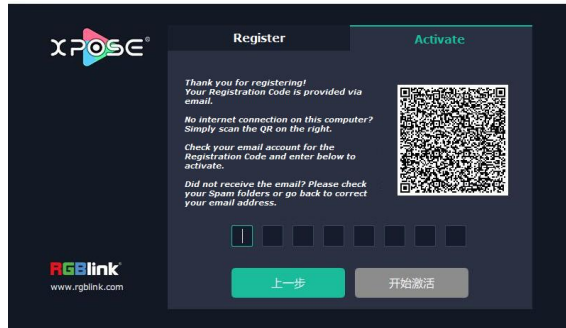


Double click this icon ,and enter the log on interface as follow



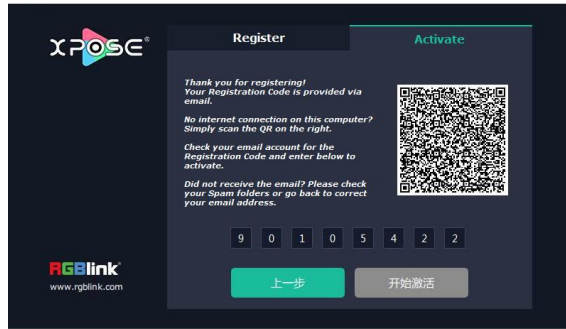
The initial language of XPOSE 2.0 is self adjusted based on the operation system language of the computer. **Click Register** and fill in the blank with first name, last name, email, company and country and then click **Register Now**. Please note that the email shall be invalid and complete otherwise Registration&Activation code cannot be received.

Click **Activate** and scan the QR code

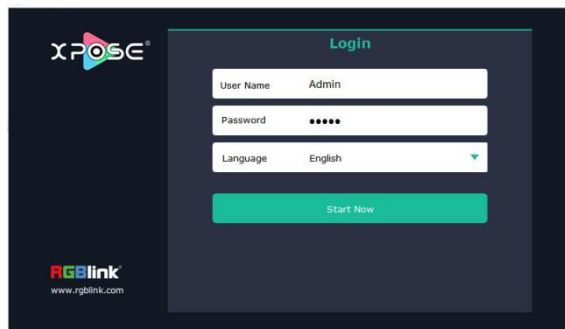


an email from **RGBlink Registrations** will be sent to the **Register** email address.

Type in the activate code and confirm



then enter the login interface.



Keep the user name as “Admin” and password blank and then click **Start Now**.



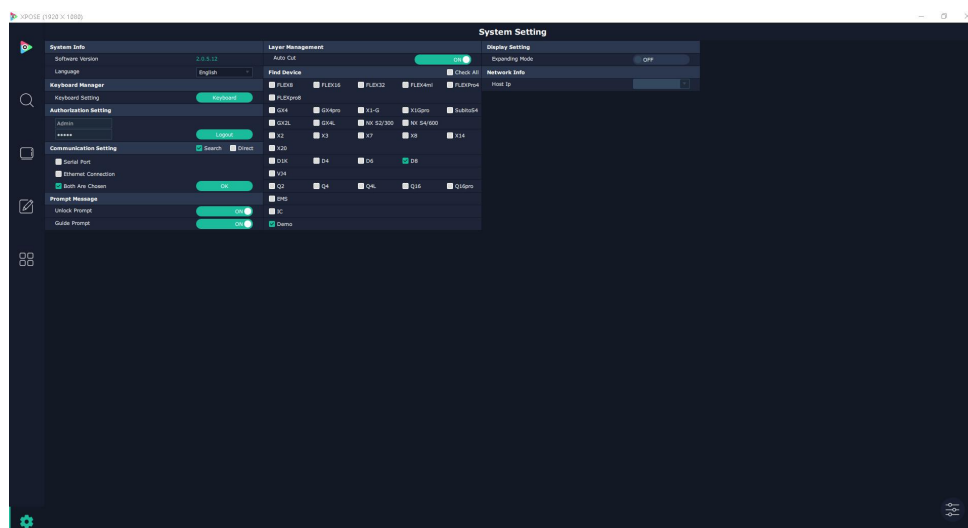
If exact Name and Password are needed, users can set up them in Authorization Setting under System Setting.





After login, users can find the management including: Search, Display System, Layer Management, Preset Management, Keyboard Settings. The details of each hierarchy will be described hereafter.

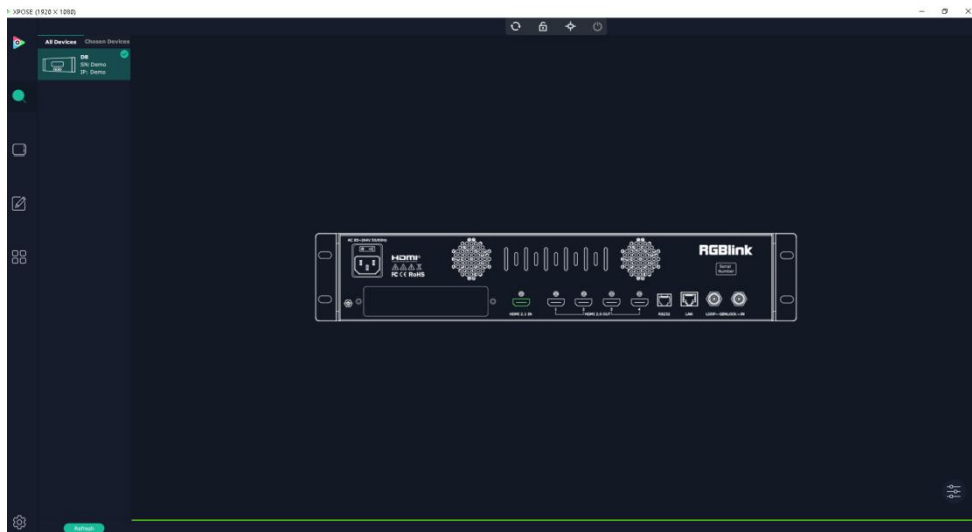
3.3.2 Input and Output Settings

Connect the Device

Click the icon  to open **【System Setting】**, and select **D8** in **【Find Devices】**.




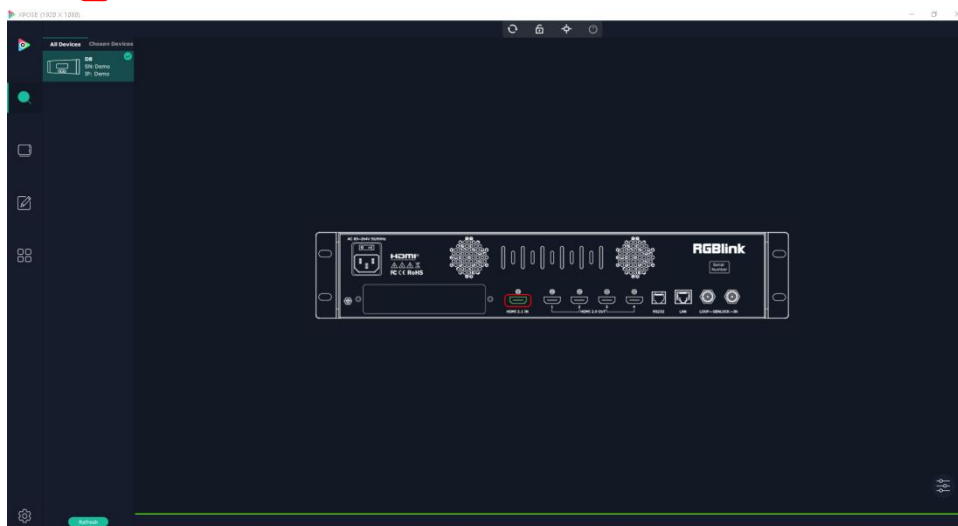
Click the icon  and click refresh  to check all available devices in the network. Click  to choose D8 and click  to obtain the control of this device in **【Chosen Devices】**, as shown in the picture below.



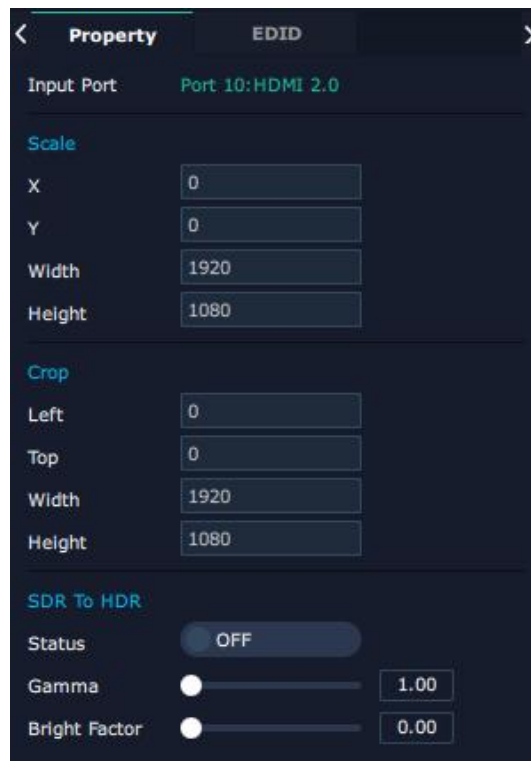
 purple  tip indicates input modules, blue  output modules, yellow  communication port.

Input Setting

Click any input port in purple area, the board where the port locates is selected. Users can do settings to the board now. A red rectangle  flashes around the chosen port when it is clicked.



Property Setting



Input Port: Current port

Scale

X/Y: Vertical and horizontal position

Width/Height: Vertical and horizontal size

Crop

Left: crop left

Top: crop top

Width: horizontal size after crop

Height: vertical size after crop

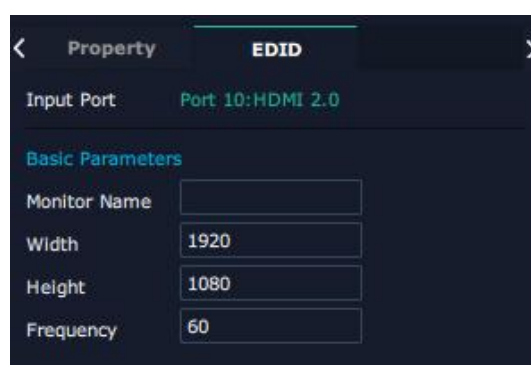
SDR to HDR

Status: ON/OFF

Gamma:0~9.99(Adjust the brightness of picture,the higher the number,the higher the brightness)


Bright Factor: 0~9.99

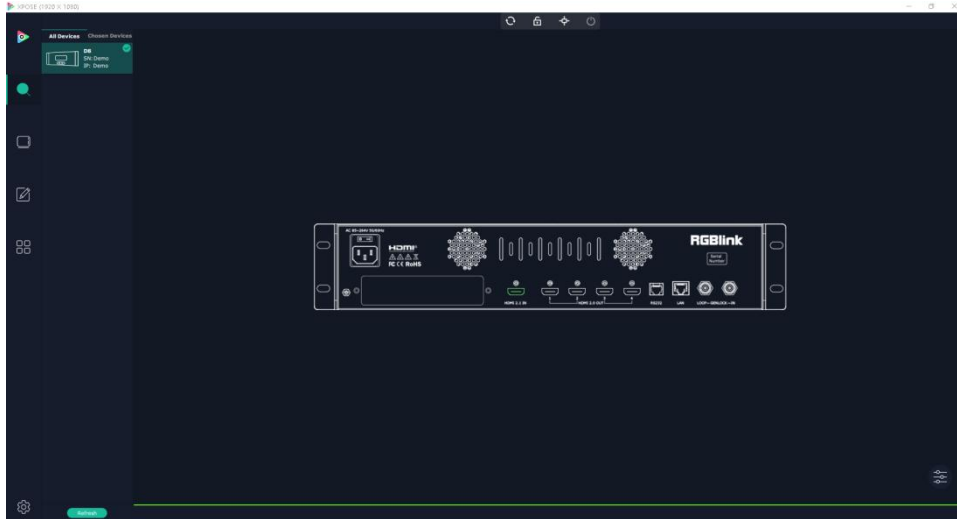
EDID Setting



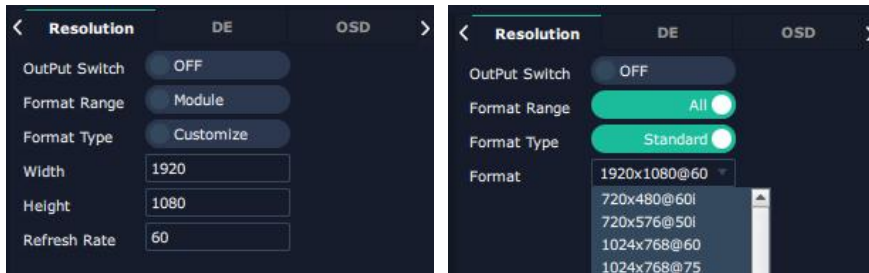
Input Port: Current Port and type
Customized EDID: Monitor Name, Width ,Height and Frequency

Output Setting

Click any output port , the module where the port locates is selected. Users can do settings to the modules now. A red rectangle  flashes around the port when it is chosen.



Resolution Setting



Output Switch: Slide to On or OFF

Format Range: select ALL or Module. All means this setting is applied to all output ports, Module means this setting is only valid on this module.

Format Type:Standard /Customize

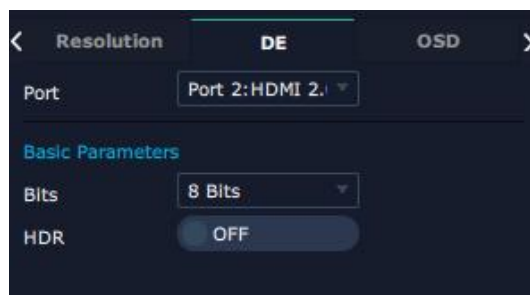
Choose Customize, width, Height, Refresh Rate have to be put in by users manually.

Format: when format type is Standard, there are standard format list to choose.

Format for ALL: 720×480@60i 到 7680×1080@60

Format for Module: 1024×768@60 到 7680×1080@60

DE Setting

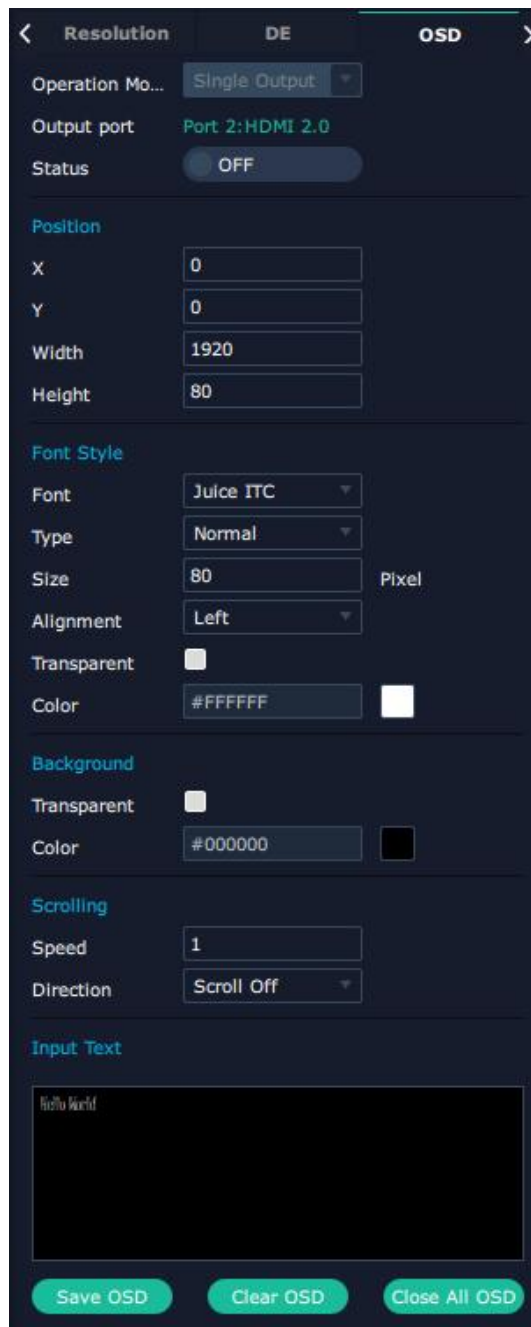


Port: choose current port or Port All

Bits: 8bits/10bits/12bits

HDR: ON/OFF

OSD Setting



Output port: the current port

Status: ON or OFF

Position

X/Y:the starting horizontal and vertical position

Width/Height:the horizontal and vertical size of the text

Font Style

Font: font of the text,all fonts installed in the computer is available

Font Type: Normal,Italic,Bold,Bold Italic

Font size: 0-300 pixels


Pixel alignment: Left, Right, Center to Horizontal,Vertical Center Right, Align Bottom Right, Align left bottom, Vertical center left, Vertical center, Horizontal center bottom

Transparent:font transparent

Color:Click  to select more font color

Background

Transparent:background transparent

Color:Click  to select more background color

Scrolling

Scroll Speed: 0-16

Scroll Direction: Scroll Off, Scroll Left, Scroll Right

Input Text:The exact content of the text.

After setting, users choose Save OSD,Clear OSD(if the setting is not desired) or Close All OSD

Device Overview

Click Return , there are overview, IP setting,,Fan Control,Power ON,Factory Setting,

Overview: show Device Info, module info of version and temperature in each slot.




Factory Setting

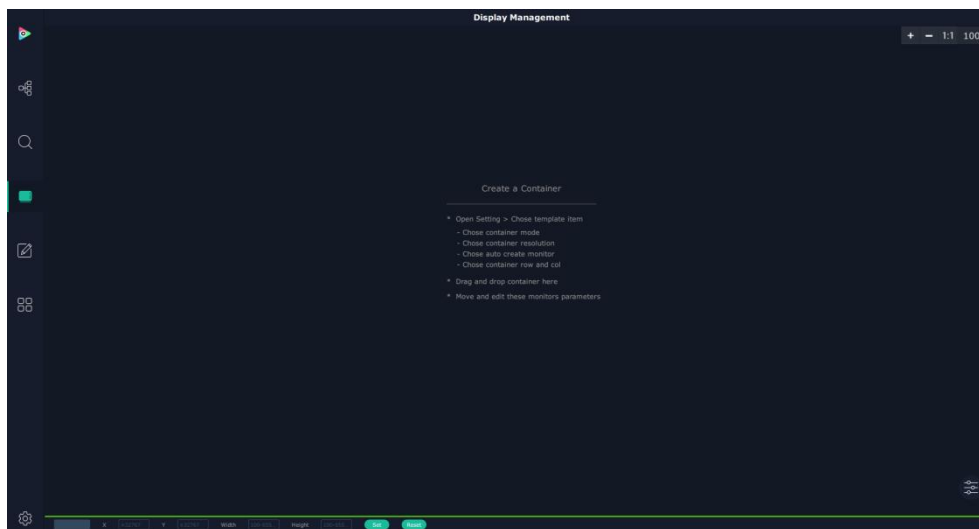
Remove Logo/EDID,Save IP



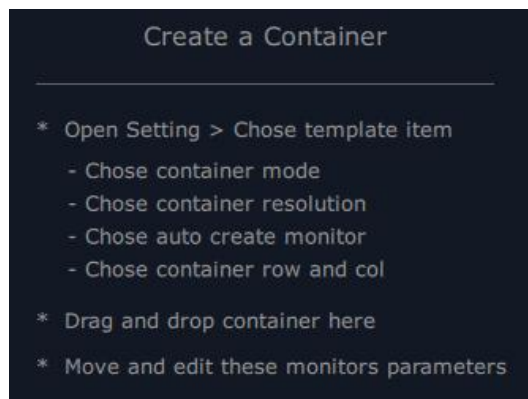
3.3.3 Display Management

Display System is for users to set layout of outputs.

Click this icon  first enter the interface as follow:



Container



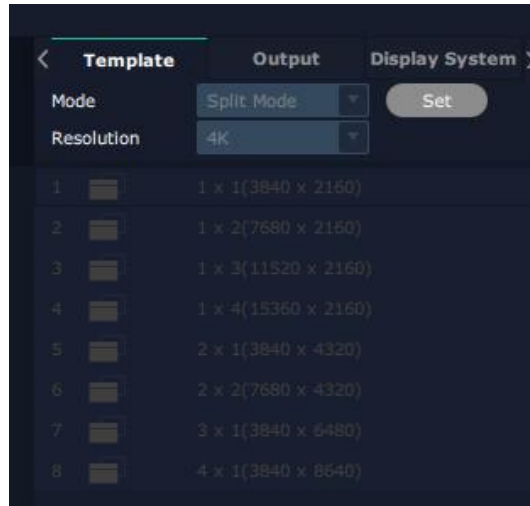
Container here means the Display Area, for example it could be a formed LED screen or an array of LCDs

Template

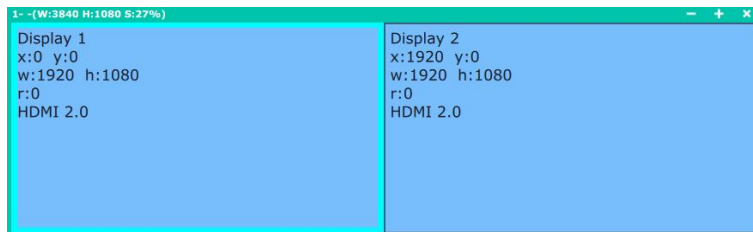
There are 15 types of basic “Display Area” which is used to contain output interface, and could be regarded as layout of output.


Mode

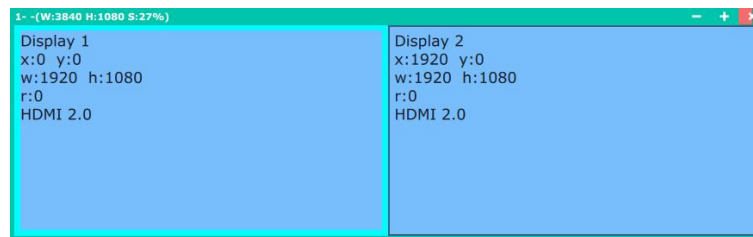
At present, D8 supports Presentation Mode and Split Mode. Each mode is marked in different color and provided with fitted templates.



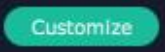


Container(dragged from Template) under Presentation Mode

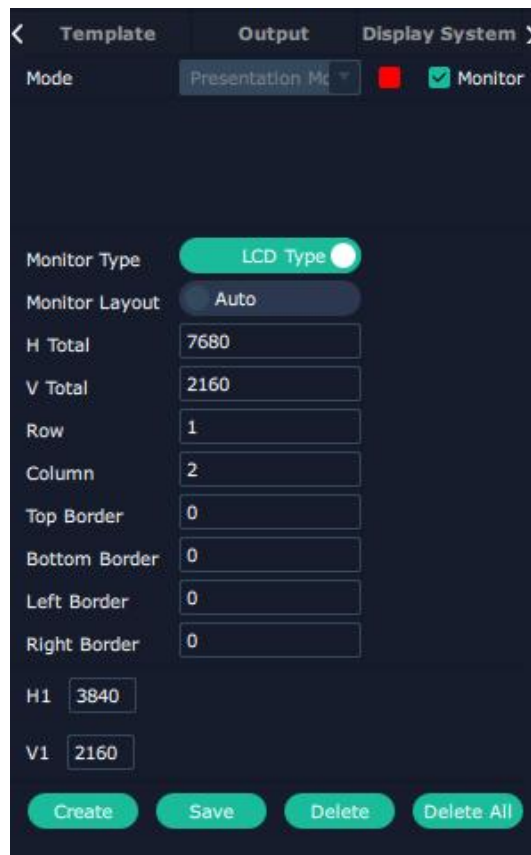


Delete Container:long press the  to cancel the Container/Display Area

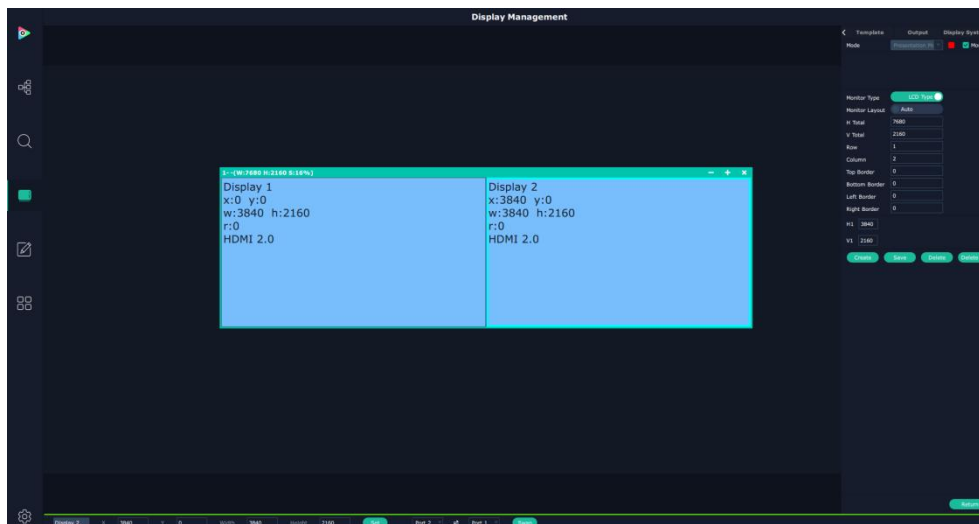


Customize Container



Click this icon  at the bottom of template list. fill in the H Total, V Total, Row and Column, then click  a customized containers is created. If this container need to be saved, click SAVE 



For example create a , 1×2 ,7680×2160 container as follows



Adjust Display Area

Place the mouse in the Container, roll the mouse can zoom in or out the Container in the XPOSE window. Clicking icon  and  can do the same work.


Drag the border of the display area to move its place in the interface.

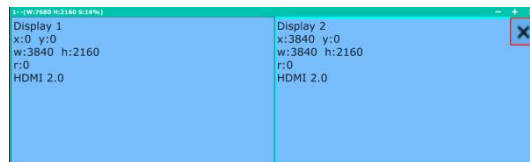


Output

Show all the output ports on the device. Once the monitor is dragged into container meaning this output is used and the output port get dark.

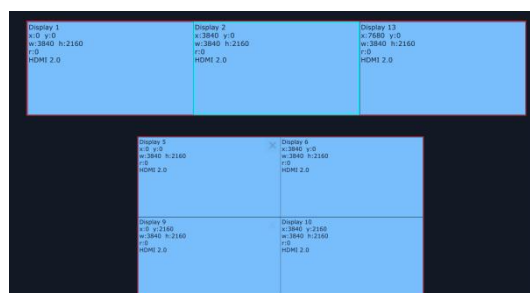
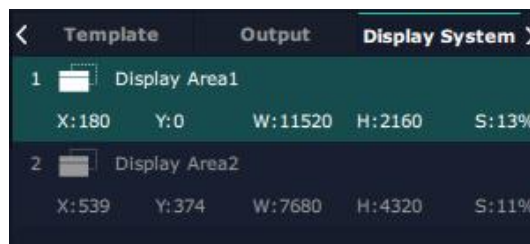


Click this icon  on Display to cancel the display in Display Area




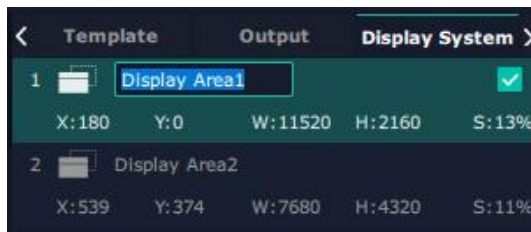
Pressing CTRL+ALT can lead to close of all displays on the XPOSE window.

Display System




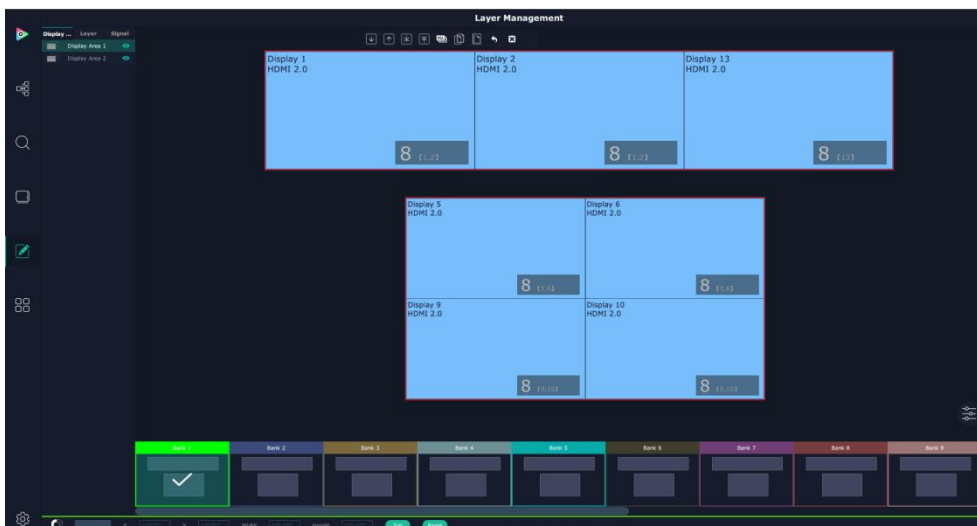
Show all Containers/Display Area that have been created.

Click tick icon  behind to give alias to the each Display Area if necessary.




3.3.4 Layer Management

Layer Management is designed to manage the layer of each monitor. Click this icon  to enter the interface:



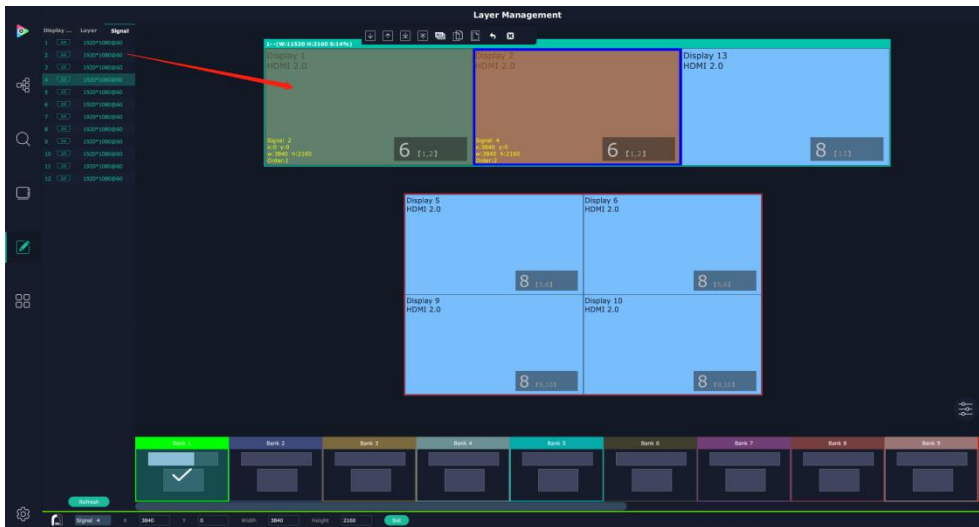
Display Area

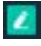
Here is to show all the Display Area set in previous step System Management. Click  to cancel or use the corresponding Display Area.




Signal

To show the signal list of all inputs. Drag source from signal list to each display or Container.



Click this icon  and alias of signal could be put in if necessary.



Click this icon  to confirm the alias setting.

Layer

After signal is dragged into display, show Layer index Versus Signal index



Numbers on Monitor

Numbers on monitor is to show how many layers at present allowed to put in the monitor .



Cross over display will take up one more layer,as shown in the picture below



Layer Adjustment

there are two ways to adjust layer.

1. Use the bar under the interface

Choose one layer and the bar shows its signal source, type in position and size.

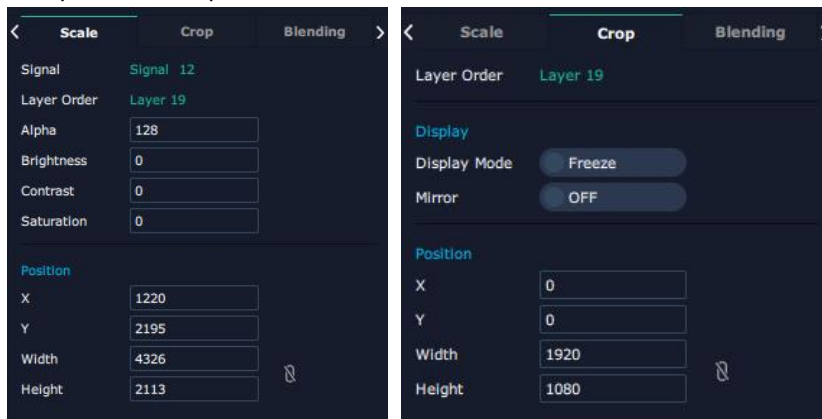


2. Layer Scale and Crop

Alpha:0~128

Brightness/Contrast/Saturation:0~100


Freeze:Turn ON freeze to prevent misoperation



Layer Movement


Move the mouse to drag the layer.

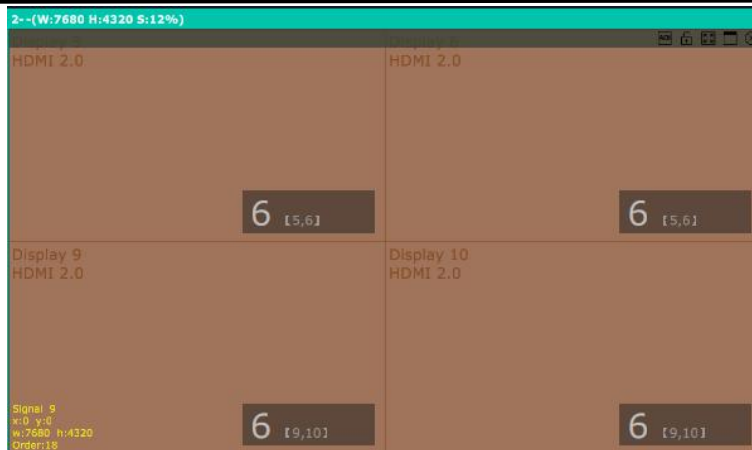
Layer Remove

Click the cross  on the top right of the layer to remove the layer if needed.



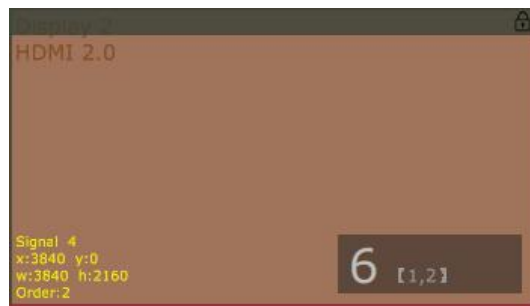
Layer Max

Click this icon  to cover up all monitors in the same Display Area with the one signal, as the following:



Layer Lock

Click the lock icon on the right middle of the later boarder,When the layer is locked, any movement or removal to the layer is invalid.



Other Operation on Layer



Use the tools bar on top of window to do such operations

	Layer Backward		Layer Forward		Layer to Bottom
	Layer to Top		Select All		Copy Selected
	Paste Selected		Cancel Selected		Delete Selected

Save to Bank Automatically

When layer setting of one BANK is done, click next or other BANK, this BANK can be saved automatically.



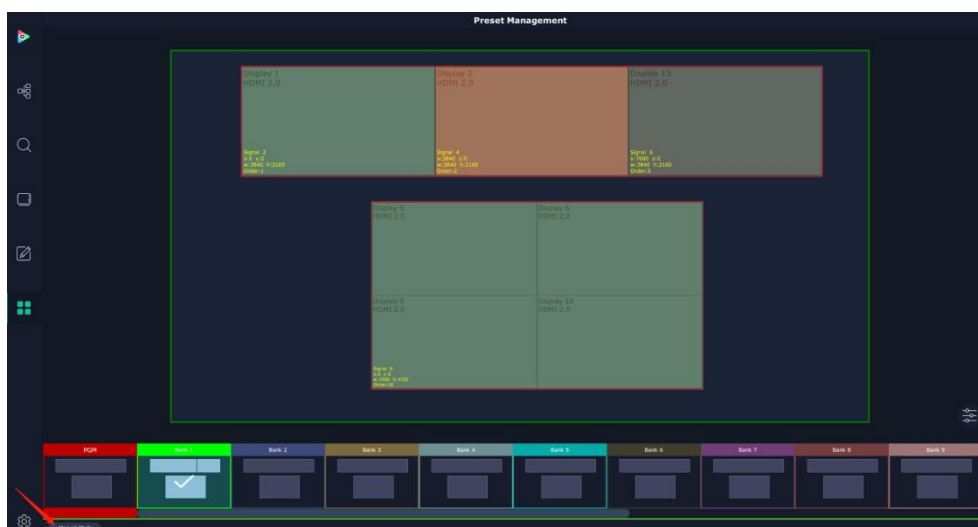
3.3.5 Preset Management



Preset Management is designed to switch bank (scene setting done in last step).

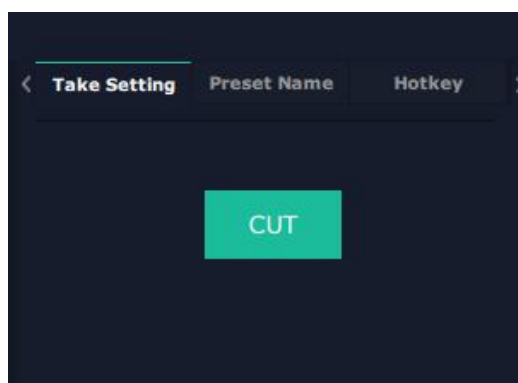
Preset Management Mode: 1. Manual Mode; 2. Schedule Mode

Manual Mode



Switch Manual Mode or Schedule Module by the bar in the left bottom corner of the window. Preset is showing the BANK selected. PGM is in first box in the bottom left.

Take Setting

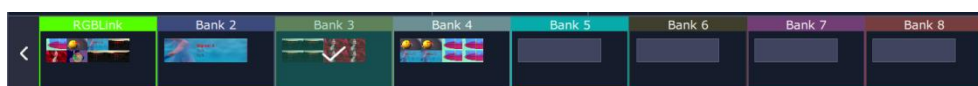


Click this icon  after selecting a BANK.

Fade Time: 0.0 ~10.0S

Black out: slide to ON or OFF

The tick on the bank indicates that the bank is selected.



Preset Name

Select a bank and click Preset Name , fill in the blank after New Preset Name to rename a Preset (Bank)
Click the color block after Color Selection and choose a new color for the boarder of chosen bank.

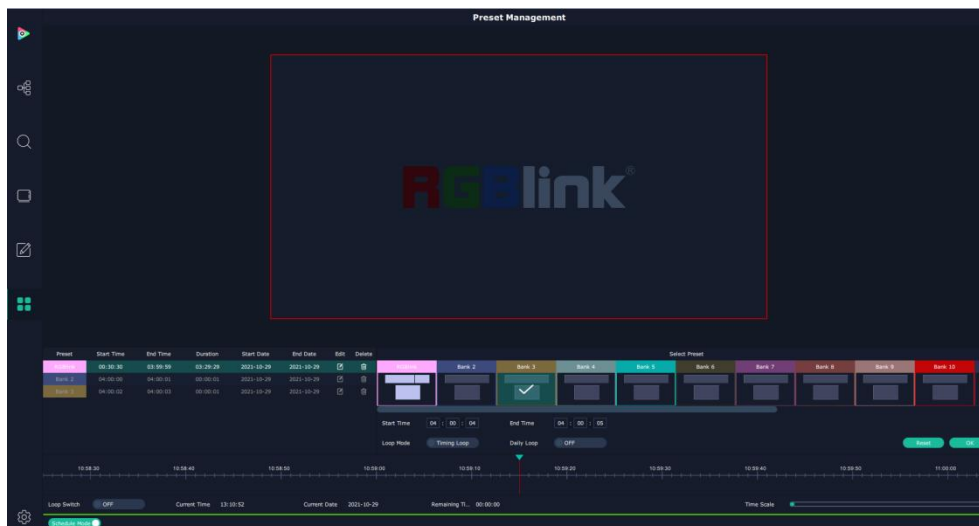


For example change Bank1to RGBlink, with pink boarder



Schedule Mode

This mode is designed to set auto bank (scene/preset) switch.

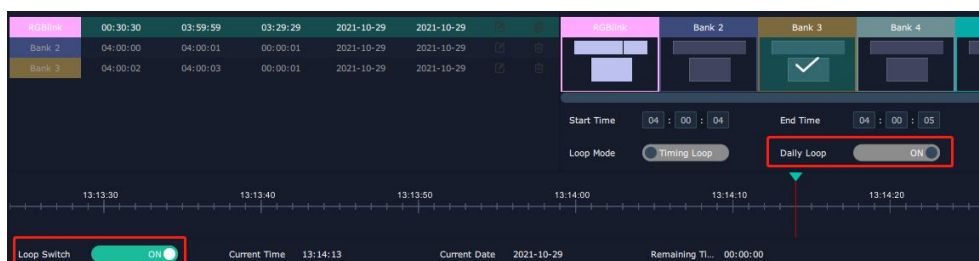


1. Select the bank that need to be looped.


2. Set **Start Time** and **End Time** and click **OK** to confirm.

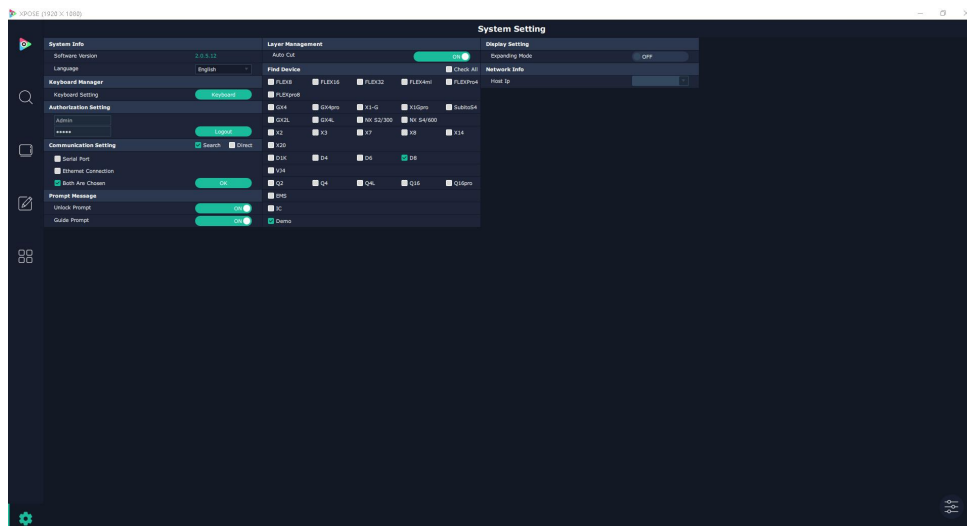
The Preset can be added into the loop list after confirm. click this icon to edit Start Time and End Time if needed. Click this icon to delete this preset if it is not needed.

3. Turn on **Daily Loop** and **Loop Switch** .



3.3.6 System Setting

Click this icon  and enter System Setting interface



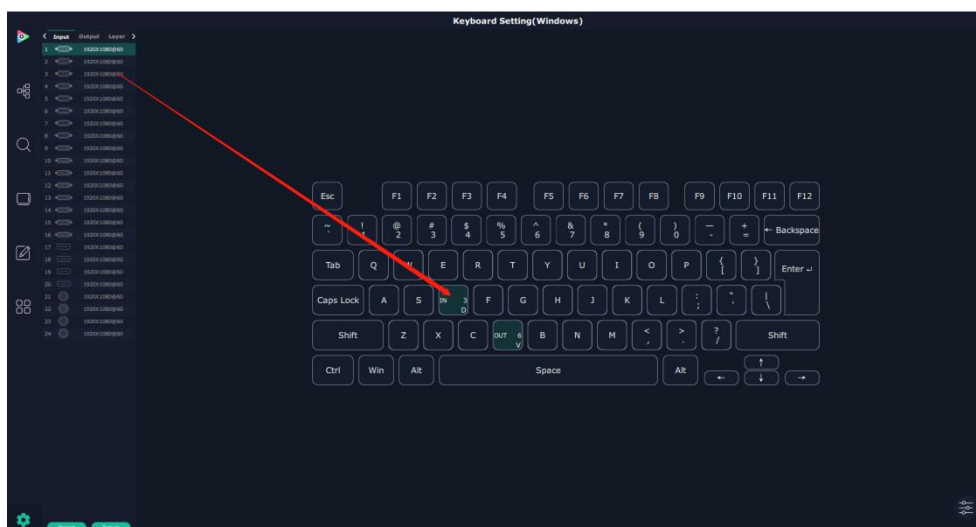
System Info

Software Version: show the current software version
Language:Chinese, English and Russian

Keyboard Manager


click keyboard  it will redirected to keyboard setting window.

Keyboard setting is designed to fit for different operation systems such as Windows and Mac. Users can set short cut keys for Input, Output, Layer and Preset.
Drag Input, Output, Layer and Preset from the list to the keys you desired as follow:



Please note the keyboard area where allows to set short cut keys as follow:

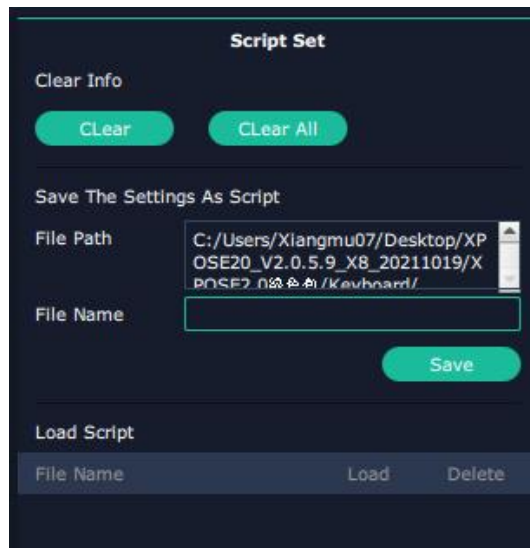


If the setting goes wrong or no need for short cut keys any more, click  to clear some keys or clear all.

Clear: is to clear some keys, the keys need to selected before hand.

Clear all: is to remove all already set short cut keys.

After setting the shortcut keys, you can modify the default file name and save the script. The script will be automatically saved to the corresponding path in the XPOSE folder. You can load in script Settings when used again.



Find Device

New version of XPOSE 2.0 is blank default in Find Device. Users are supposed to choose the device needed in System Setting.

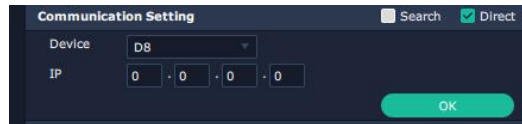


Communication Setting


Search by Serial Port, Ethernet Connection or Both. Default communication by both.

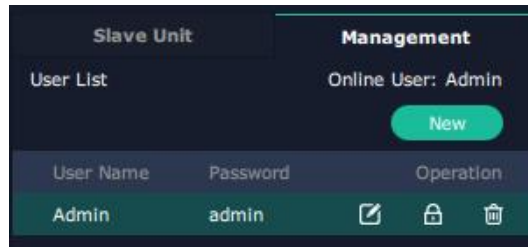


Direct Communication by selecting device and putting its IP Address





Authorization Setting


Click  to open up the authorization entry. Click **Management**

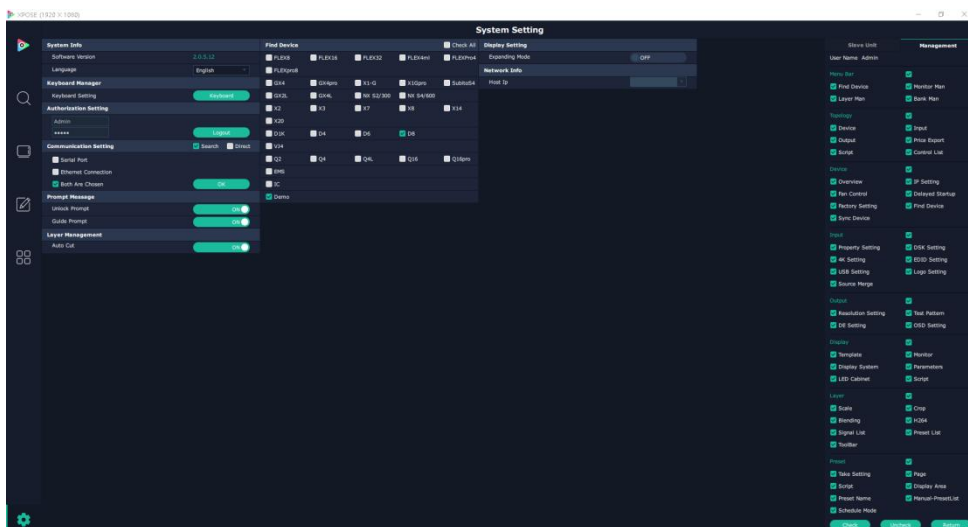


 New: Add new USER NAME and PASSWORD

 Edit: Edit user name and password already built.

 Delete: Delete user name and password already built.

 Permission: functions on this XPOSE 2.0 on this computer that the created users are allowed to operate.



Slave Unit



Slave Unit is to control multiple devices simultaneously, which are connected to same network. (“In the same network” means the the the third section in the IP address digits are the same) XPOSE do operation on one device, same operation synchronized to other devices. For example, there is another devices linked to the same network, one with IP IP192.168.0.45

If users need to back up operation from current running device to this device slave unit shall be used. First fill in the quantity of to be linked devices, click Set Numbers,

Index, Device IP and State will come up.

Choose the IP address of the other device from drop down list, e.g IP192.168.0.45 and

Slide to ON, the red dot behind turns to green indicating that the device has been connected



Chapter 4 Order Codes

4.1 Product

130-0008-01-0 D8

4.2 Options

190-0008-01-0 Quad 4K HDMI Input Module
190-0008-21-0 Dual 4K HDMI Output Module

Chapter 5 Support

5.1 Contact Us

www.rgblink.com



Inquiries

+86-592-577-1197
info@rgblink.com
rgblink.com/contact-us

Global Support

support@rgblink.com
rgblink.com/support-me



@RGLINK



/rgblink



+rgblink



/rgblink



rgblink



rgblink

RGBlink Headquarters

Xiamen, China

Room 601A, No. 37-3
Banshang community,
Building 3, Xinke Plaza, Torch
Hi-Tech Industrial
Development Zone, Xiamen,
China

+86-592-577-1197

China Regional Sales & Support

Shenzhen, China

11th Floor Baiwang Building
5318 Shahe West Road
Baimang, Nanshan

+86-755 2153 5149

Beijing Region Office

Beijing, China

Building 8, 25 Qixiao Road
Shahe Town Changping

+010- 8577 7286

Europe Regional Sales & Support

Eindhoven, Holland

Flight Forum Eindhoven
5657 DW

+31 (040) 202 71 83

Chapter 6 Appendix

6.1 Terms & Definitions


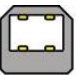


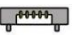
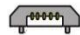

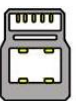

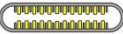
- **RCA:** Connector used primarily in consumer AV equipment for both audio and video. The RCA connector was developed by the Radio Corporation of America.
- **BNC:** Stands for Bayonet Neill-Concelman. A cable connector used extensively in television (named for its inventors). A cylindrical bayonet connector that operates with a twist-locking motion .
- **CVBS:** CVBS or Composite video, is an analog video signal without audio. Most commonly CVBS is used for transmission of standard definition signals. In consumer applications the connector is typically RCA type, while in professional applications the connector is BNC type.
- **YPbPr:** Used to describe the colour space for progressive-scan. Otherwise known as component video.
- **VGA:** Video Graphics Array. VGA is an analog signal typically used on earlier computers. The signal is non-interlaced in modes 1, 2, and 3 and interlaced when using in mode
- **DVI:** Digital Visual Interface. The digital video connectivity standard that was developed by DDWG (Digital Display Work Group). This connection standard offers two different connectors: one with 24 pins that handles digital video signals only, and one with 29 pins that handles both digital and analog video.
- **SDI:** Serial Digital Interface. Standard definition video is carried on this 270 Mbps data transfer rate. Video pixels are characterized with a 10-bit depth and 4:2:2 color quantization. Ancillary data is included on this interface and typically includes audio or other metadata. Up to sixteen audio channels can be transmitted. Audio is organised into blocks of 4 stereo pairs. Connector is BNC.
- **HD-SDI:** high-definition serial digital interface (HD-SDI), is standardized in SMPTE 292M this provides a nominal data rate of 1.485 Gbit/s.
- **3G-SDI:** standardized in SMPTE 424M, consists of a single 2.970 Gbit/s serial link that allows replacing dual link HD-SDI.
- **6G-SDI:** standardized in SMPTE ST-2081 released in 2015, 6Gbit/s bitrate and able to support 2160p@30.
- **12G-SDI:** standardized in SMPTE ST-2082 released in 2015, 12Gbit/s bitrate and able to support 2160p@60.
- **U-SDI:** Technology for transmitting large-volume 8K signals over a single cable. a signal interface called the ultra high definition signal/data interface (U-SDI) for transmitting 4K and 8K signals using a single optical cable. The interface was standardized as the SMPTE ST 2036-4.
- **HDMI:** High Definition Multimedia Interface: An interface used for the transmission of uncompressed high definition video, up to 8 channels of audio, and control signals, over a single cable.
- **HDMI 1.3:** released on June 22 2006, and increased the maximum TMDS clock to 340 MHz (10.2 Gbit/s). Support resolution 1920 × 1080 at 120 Hz or 2560 × 1440 at 60 Hz). It added support for 10 bpc, 12 bpc, and 16 bpc color depth (30, 36, and 48 bit/px), called deep color.
- **HDMI 1.4:** released on June 5, 2009, added support for 4096 × 2160 at 24 Hz, 3840 × 2160 at 24, 25, and 30 Hz, and 1920 × 1080 at 120 Hz. Compared to HDMI 1.3, 3 more features added which are HDMI Ethernet Channel (HEC) , audio return channel (ARC), 3D Over HDMI, a new Micro HDMI Connector, an expanded set of color spaces.

-
- **HDMI 2.0**, released on September 4, 2013 increases the maximum bandwidth to 18.0 Gbit/s. Other features of HDMI 2.0 include up to 32 audio channels, up to 1536 kHz audio sample frequency, the HE-AAC and DRA audio standards, improved 3D capability, and additional CEC functions.
 - **HDMI 2.0a**: was released on April 8, 2015, and added support for High Dynamic Range (HDR) video with static metadata.
 - **HDMI 2.0b**: was released March, 2016, support for HDR Video transport and extends the static metadata signaling to include Hybrid Log-Gamma (HLG).
 - **HDMI 2.1** : released on November 28, 2017. It adds support for higher resolutions and higher refresh rates, Dynamic HDR including 4K 120 Hz and 8K 120 Hz.
 - **DisplayPort**: A VESA standard interface primarily for video, but also for audio, USB and other data. DisplayPort (orDP) is backwards compatible with HDMI, DVI and VGA.
 - **DP 1.1**: was ratified on 2 April 2007, and version 1.1a was ratified on 11 January 2008. DisplayPort 1.1 allow a maximum bandwidth of 10.8 Gbit/s (8.64 Gbit/s data rate) over a standard 4-lane main link, enough to support 1920x1080@60Hz
 - **DP 1.2**: introduced on 7 January 2010, effective bandwidth to 17.28 Gbit/s support increased resolutions, higher refresh rates, and greater color depth, maximum resolution 3840 × 2160@60Hz
 - **DP 1.4**: publish on 1 Mar, 2016. overall transmission bandwidth 32.4 Gbit/s ,DisplayPort 1.4 adds support for Display Stream Compression 1.2 (DSC), DSC is a "visually lossless" encoding technique with up to a 3:1 compression ratio. Using DSC with HBR3 transmission rates, DisplayPort 1.4 can support 8K UHD (7680 × 4320) at 60 Hz or 4K UHD (3840 × 2160) at 120 Hz with 30 bit/px RGB color and HDR. 4K at 60 Hz 30 bit/px RGB/HDR can be achieved without the need for DSC.
 - **Multi-mode Fiber**: Fibers that support many propagation paths or transverse modes are called multi-mode fibers, generally have a wider core diameter and are used for short-distance communication links and for applications where high power must be transmitted.
 - **Single-mode Fiber**: Fiber that support a single mode are called single-mode fibers. Single-mode fibers are used for most communication links longer than 1,000 meters (3,300 ft).
 - **SFP**: small form-factor pluggable , is a compact, hot-pluggable network interface module used for both telecommunication and data communications applications.
 - **optical fiber connector**: terminates the end of an optical fiber, and enables quicker connection and disconnection than splicing. The connectors mechanically couple and align the cores of fibers so light can pass. 4 most common types of optical fiber connectors are SC, FC, LC,ST.
 - **SC**:(Subscriber Connector), also known as the square connector was also created by the Japanese company – Nippon Telegraph and Telephone. SC is a push-pull coupling type of connector and has a 2.5mm diameter. Nowadays, it is used mostly in single mode fiber optic patch cords, analog, GBIC, and CATV. SC is one of the most popular options, as its simplicity in design comes along with great durability and affordable prices.
 - **LC**: (Lucent Connector) is a small factor connector (uses only a 1.25mm ferrule diameter) that has a snap coupling mechanism. Because of its small dimensions, it is the perfect fit for high-density connections, XFP, SFP, and SFP+ transceivers.
 - **FC** :(Ferrule Connector) is a screw type connector with a 2.5mm ferrule. FC is a round shaped threaded fiber optic connector, mostly used on Datacom, telecom, measurement equipment, single-mode laser.
 - **ST**: (Straight Tip) was invented by AT&T and uses a bayonet mount along with a long spring-loaded ferrule to support the fiber.
 - **USB**: Universal Serial Bus is a standard that was developed in the mid-1990s that defines cables, connectors and

communication protocols. This technology is designed to allow a connection, communication and power supply for peripheral devices and computers.

- **USB 1.1:** Full-Bandwidth USB, specification was the first release to be widely adopted by the consumer market. This specification allowed for a maximum bandwidth of 12Mbps.
- **USB 2.0:** or Hi-Speed USB, specification made many improvements over USB 1.1. The main improvement was an increase in bandwidth to a maximum of 480Mbps.
- **USB 3.2:** Super Speed USB with 3 varieties of 3.2 Gen 1(original name USB 3.0), 3.2Gen 2(original name USB 3.1), 3.2 Gen 2x2 (original name USB 3.2) with speed up to 5Gbps,10Gbps,20Gbps respectively.

USB version and connectors figure:

	Type A	Type B	Mini A	Mini B	Micro-A	Micro-B	Type C
USB 2.0							
USB 3.0							
USB 3.1&3.2							

- **NTSC :** The colour video standard used in North America and some other parts of the world created by the National Television Standards Committee in the 1950s. NTSC utilizes an interlaced video signals.
- **PAL:** Phase Alternate Line. A television standard in which the phase of the colour carrier is alternated from line to line. It takes four full images (8 fields) for the colour-to-horizontal images (8 fields) for the colour-to-horizontal phase relationship to return to the reference point. This alternation helps cancel out phase errors. For this reason, the hue control is not needed on a PAL TV set. PAL, is widely used in Western Europe, Australia, Africa, the Middle East, and Micronesia. PAL uses 625-line, 50-field (25 fps) composite colour transmission system.
- **SMPTE:** Society of Motion image and Television Engineers. A global organization, based in the United States, that sets standards for baseband visual communications. This includes film as well as video and television standards.
- **VESA:** Video Electronics Standards Association. An organization facilitating computer graphics through standards.
- **HDCP:** High-bandwidth Digital Content Protection (HDCP) was developed by Intel Corporation and is in wide use for protection of video during transmission between devices.
- **HDBaseT:** A video standard for the transmission of uncompressed video (HDMI signals) and related features using Cat 5e/Cat6 cabling infrastructure.
- **ST2110:** A SMPTE developed standard, ST2110 describes how to send digital video over and IP networks. Video is transmitted uncompressed with audio and other data in a separate streams.

SMPTE2110 is intended principally for broadcast production and distribution facilities where quality and flexibility are more important.

●**SDVoE:** Software Defined Video over Ethernet (SDVoE) is a method for transmission, distribution and management AV signals using a TCP/IP Ethernet infrastructure for transport with low latency. SDVoE is commonly used in integration applications.

●**Dante AV:** The Dante protocol was developed for and widely adopted in audio systems for the transmission of uncompressed digital audio on IP based networks. The more recent Dante AV specification includes support for digital video.

●**NDI:** Network Device interface (NDI) is a software standard developed by NewTek to enable video-compatible products to communicate, deliver, and receive broadcast quality video in a high quality, low latency manner that is frame-accurate and suitable for switching in a live production environment over TCP (UDP) Ethernet based networks. NDI is commonly found in broadcast applications.

●**RTMP:** Real-Time Messaging Protocol (RTMP) was initially a proprietary protocol developed by Macromedia (now Adobe) for streaming audio, video and data over the Internet, between a Flash player and a server.

●**RTSP :** The Real Time Streaming Protocol (RTSP) is a network control protocol designed for use in entertainment and communications systems to control streaming media servers. The protocol is used for establishing and controlling media sessions between end points.

●**MPEG:** Moving Picture Experts Group is a working group formed from ISO and IEC developing standards that allow audio/video digital compression and Transmission.

●**H.264:** Also known as AVC (Advanced Video Coding) or MPEG-4i is a common video compression standard. H.264 was standardized by the ITU-T Video Coding Experts Group (VCEG) together with the ISO/IEC JTC1 Moving Picture Experts Group (MPEG).

●**H.265:** Also known as **HEVC** (High Efficiency Video Coding) H.265 is the successor to the widely used H.264/AVC digital video coding standard. Developed under the auspices of ITU, resolutions up to 8192x4320 may be compressed.

●**API:** An Application Programming Interface (API) provides a predefined function which allows access capabilities and features or routines via a software or hardware, without accessing source code or understanding the details of inner working mechanism. An API call may execute a function and/or provide data feedback/report.

●**DMX512:** The communication standard developed by USITT for entertainment and digital lighting systems. The wide adoption of the Digital Multiplex (DMX) protocol has seen the protocol used for a wide range of other devices including video controllers. DMX512 is delivered over cable of 2 twisted pairs with 5pin XLR cables for connection.

●**ArtNet:** An ethernet protocol based on TCP/IP protocol stack, mainly used in entertainment/events applications. Built on the DMX512 data format, ArtNet enables multiple “universes” of DMX512 to be transmitted using ethernet networks for transport.

●**MIDI:** MIDI is the abbreviation of Musical Instrument Digital Interface. As the name indicates the protocol was developed for communication between electronic musical instruments and latterly computers. MIDI instructions are triggers or commands sent over twisted pair cables, typically using 5pin DIN connectors.

●**OSC:** The principle of Open Sound Control (OSC) protocol is for networking sound synthesizers, computers, and multimedia devices for musical performance or show control. As with XML and JSON, the OSC protocol allows sharing data. OSC is transported via UDP packets between devices connected on an Ethernet.

●**Brightness:** Usually refers to the amount or intensity of video light produced on a screen without regard to colour. Sometimes called black level.

●**Contrast Ratio :** The ratio of the high light output level divided by the low light output level. In theory, the

contrast ratio of the television system should be at least 100:1, if not 300:1. In reality, there are several limitations. Well-controlled viewing conditions should yield a practical contrast ratio of 30:1 to 50:1.

● **Colour Temperature:** The colour quality, expressed in degrees Kelvin (K), of a light source. The higher the colour temperature, the bluer the light. The lower the temperature, the redder the light. Benchmark colour temperature for the A/V industry include 5000°K, 6500°K, and 9000°K.

● **Saturation:** Chroma, Chroma gain. The intensity of the colour, or the extent to which a given colour in any image is free from white. The less white in a colour, the truer the colour or the greater its saturation. Saturation is the amount of pigment in a colour, and not the intensity.

● **Gamma:** The light output of a CRT is not linear with respect to the voltage input. The difference between what you should have and what is actually output is known as gamma.

● **Frame:** In interlaced video, a frame is one complete image. A video frame is made up of two fields, or two sets of interlaced lines. In a film, a frame is one still image of a series that makes up a motion image.

● **Genlock:** Allows synchronisation of otherwise video devices. A signal generator provides a signal pulses which connected devices can reference. Also see Black Burst and Color Burst.

● **Blackburst:** The video waveform without the video elements. It includes the vertical sync, horizontal sync, and the Chroma burst information. Blackburst is used to synchronize video equipment to align the video output.

● **Colour Burst:** In colour TV systems, a burst of subcarrier frequency located on the back part of the composite video signal. This serves as a colour synchronizing signal to establish a frequency and phase reference for the Chroma signal. Colour burst is 3.58 MHz for NTSC and 4.43 MHz for PAL.

● **Colour Bars:** A standard test pattern of several basic colours (white, yellow, cyan, green, magenta, red, blue, and black) as a reference for system alignment and testing. In NTSC video, the most commonly used colour bars are the SMPTE standard colour bars. In PAL video, the most commonly used colour bars are eight full field bars. On computer monitors the most commonly used colour bars are two rows of reversed colour bars

● **Seamless Switching:** A feature found on many video switchers. This feature causes the switcher to wait until the vertical interval to switch. This avoids a glitch (temporary scrambling) which often is seen when switching between sources.

● **Scaling:** A conversion of a video or computer graphic signal from a starting resolution to a new resolution. Scaling from one resolution to another is typically done to optimize the signal for input to an image processor, transmission path or to improve its quality when presented on a particular display.

● **PIP:** Picture-In-Picture. A small image within a larger image created by scaling down one of image to make it smaller. Other forms of PIP displays include Picture-By-Picture (PBP) and Picture-With-Picture (PWP), which are commonly used with 16:9 aspect display devices. PBP and PWP image formats require a separate scaler for each video window.

● **HDR:** is a high dynamic range (HDR) technique used in imaging and photography to reproduce a greater dynamic range of luminosity than what is possible with standard digital imaging or photographic techniques. The aim is to present a similar range of luminance to that experienced through the human visual system.

● **UHD:** Standing for Ultra High Definition and comprising 4K and 8K television standards with a 16:9 ratio, UHD follows the 2K HDTV standard. A UHD 4K display has a physical resolution of 3840x2160 which is four times the area and twice both the width and height of a HDTV/FullHD (1920x1080) video signal.

● **EDID:** Extended Display Identification Data. EDID is a data structure used to communicate video display information,

including native resolution and vertical interval refresh rate requirements, to a source device. The source device will then output the provided EDID data, ensuring proper video image quality.

6.2 Revision History

The table below lists the changes to the Video Processor User Manual.

Format	Time	ECO#	Description	Principal
V1.0	2022-05-19	0000#	Release	Aster

All information herein is Xiamen RGBlink Science & Technology Co Ltd. excepting noted.

RGBlink® is a registered trademark of Xiamen RGBlink Science & Technology Co Ltd.

While all efforts are made for accuracy at time of printing, we reserve the right to alter otherwise make change without notice.