

Rainbow Connection

Kermit The Frog

Tuning (A D G B D)
 Capo 2
played w/ guitar pick

Main Riff (var. 1)

G C G C

Diagram showing the first variation of the main riff. It consists of four measures. The first measure is a G chord with notes 0, 0, 0, 0, 0, 0. The second measure is a C chord with notes 2, 0, 2, 1. The third measure is a G chord with notes 0, 0, 0, 0, 0, 0. The fourth measure is a C chord with notes 2, 0, 2, 1.

Main Riff (var. 2)

G C G C

Diagram showing the second variation of the main riff. It consists of four measures. The first measure is a G chord with notes 5, 4, 5, 3, 4. The second measure is a C chord with notes 5, 5, 5. The third measure is a G chord with notes 5, 4, 5, 3, 4. The fourth measure is a C chord with notes 5, 5, 5.

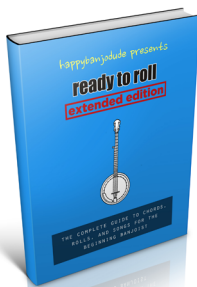
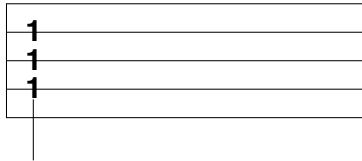
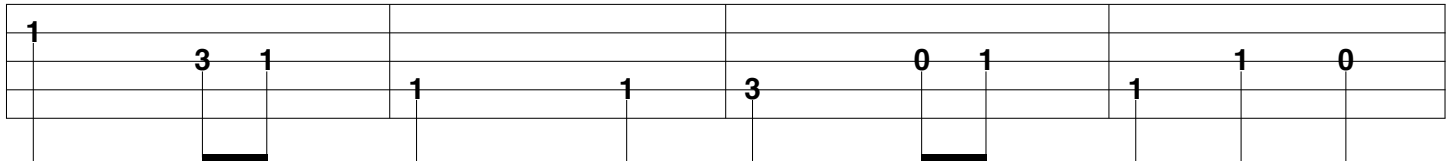
Verse

G Em Cadd9 D7

Diagram showing the verse guitar notation, consisting of four identical lines of four measures each. Each line represents a different voicing of the same chord sequence: G, Em, Cadd9, and D7. The notes for each chord are: G (0, 0, 0, 0, 0, 0), Em (2, 0, 0, 0), Cadd9 (2, 0, 0, 1, 1), and D7 (0, 2, 2, 1, 1).

Pre-Chorus

Chorus



**Just starting out?
Click here to get “Ready To Roll” and learn all the
basics for banjo!**