

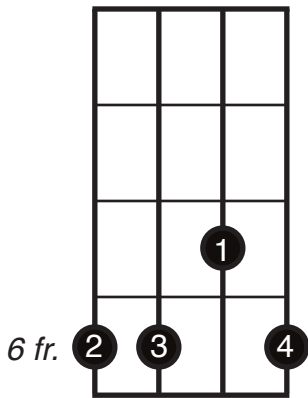
# Mean

## Taylor Swift

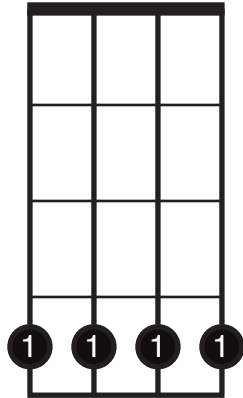
Tuning (G# D G B D)

When you strum try to only play the bottom 4 strings, but you probably will hit the top string every once in awhile. We tune up the top string to G# because this song is in the key of E (which has the note G# instead of G). That way if you hit the top string it won't clash with the chords!

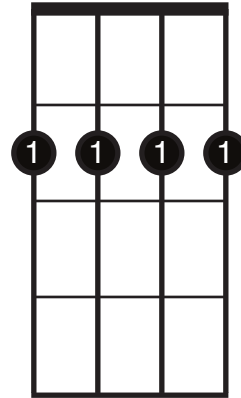
C#m



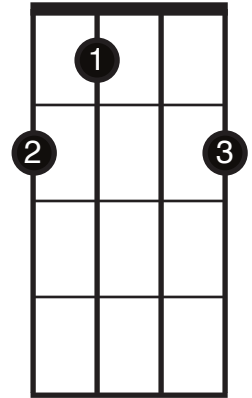
B



A



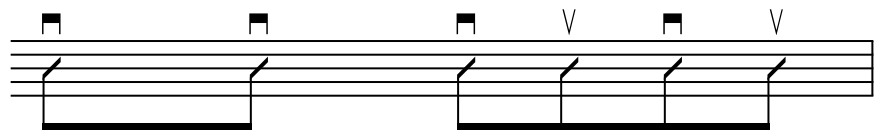
E



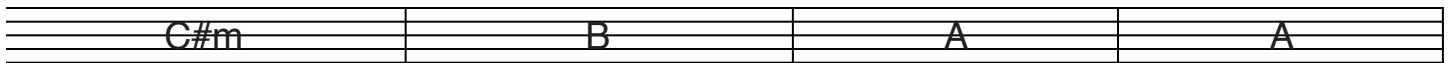
### Strumming Pattern

▣ = downstrum

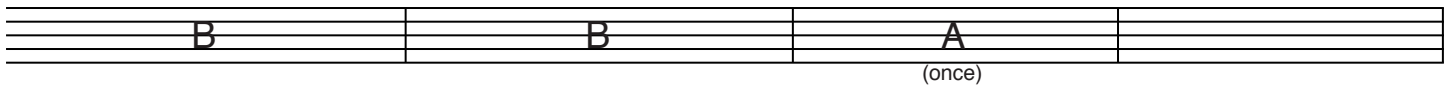
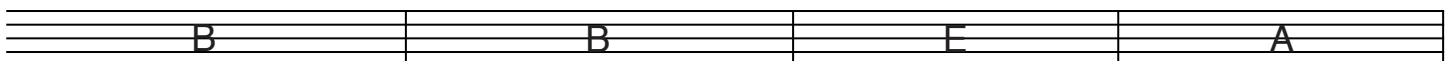
∇ = upstrum



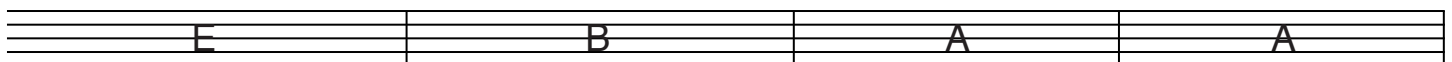
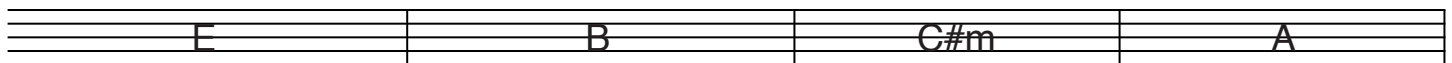
Verse (repeat 4 times)



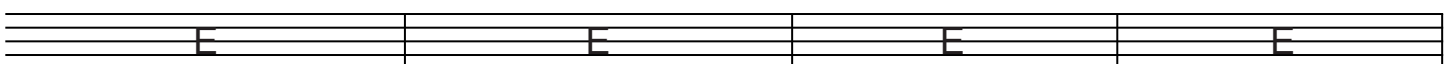
Pre-Chorus



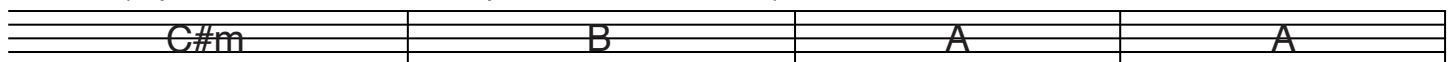
Chorus (repeat 2 times, break on last A)



Break



Verse 2 (repeat 4 times, on 2nd repeat break on 2nd A)



Pre-Chorus 2

B	B	E	A
B	B	A	A
A	A		

(once)

Chorus 2 (repeat 2 times)

E	B	C#m	A
E	B	A	A

Break/Mandolin Solo

E	E	E	E
A	A	A	A

Bridge

B	B	E	A
B	B	E	A
B	B	C#m	B

(once) (once) (once)

A		B	B
---	--	---	---

(once)

C#m	B	A	
-----	---	---	--

(once) (once) (once)

E	B	C#m	A
E	B	C#m	A
E	B	C#m	A

Chorus 3 (muted strums for 8 bars, repeat chorus 3 times, one strum on very last 4 chords, end on E)

E	B	C#m	A
E	B	A	A