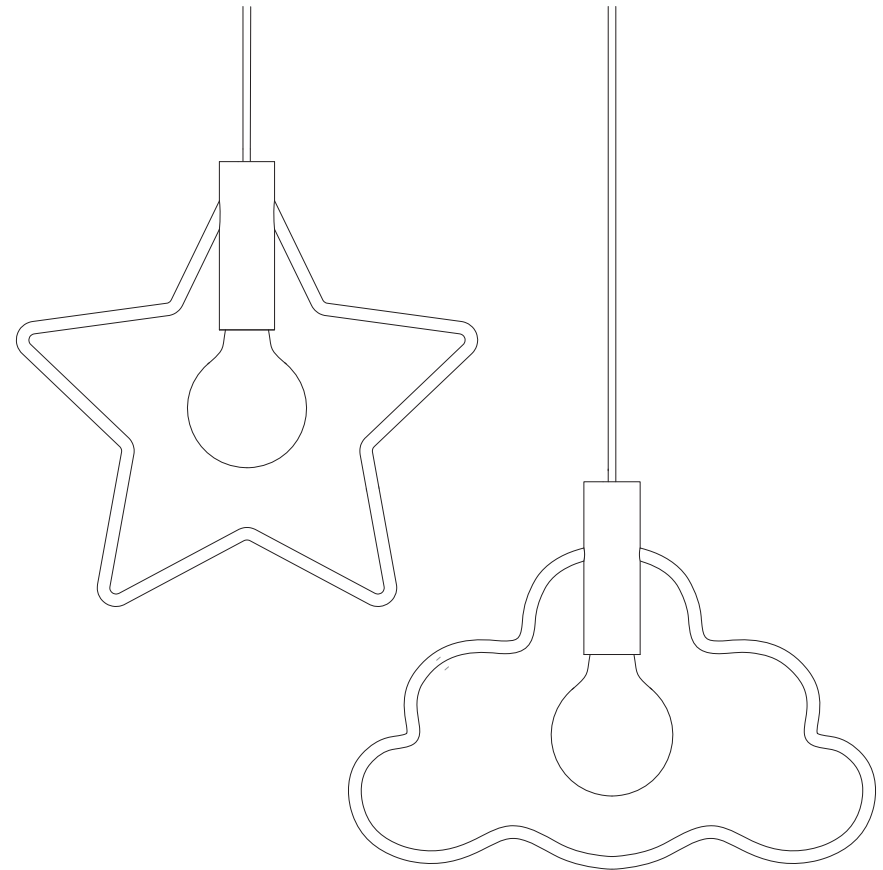


STAR & CLOUD PENDANT

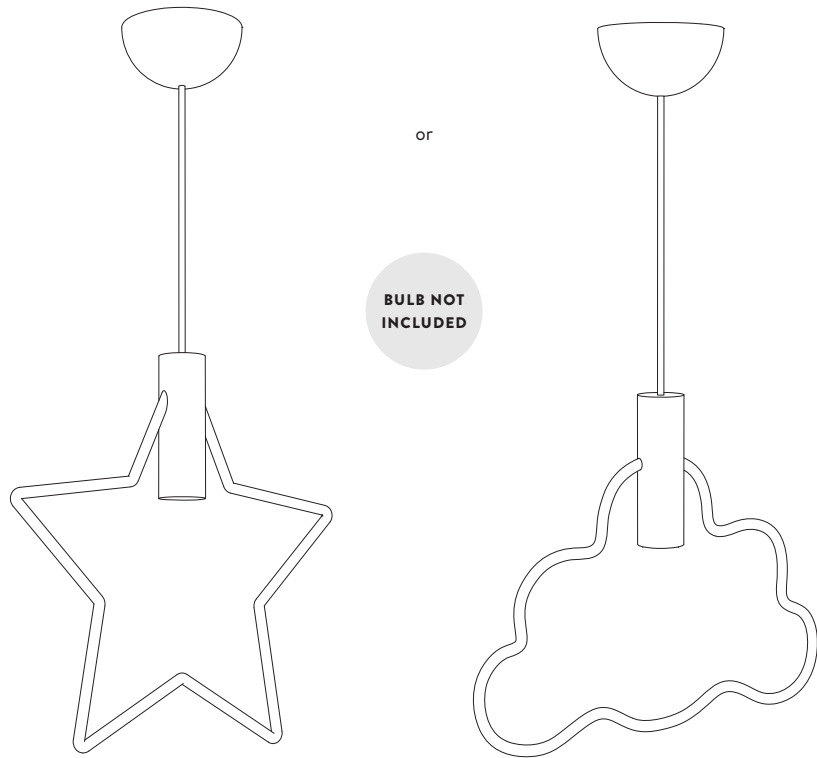
ASSEMBLY MANUAL - 100136 & 100174

fermliving.com



ferm
L I V I N G

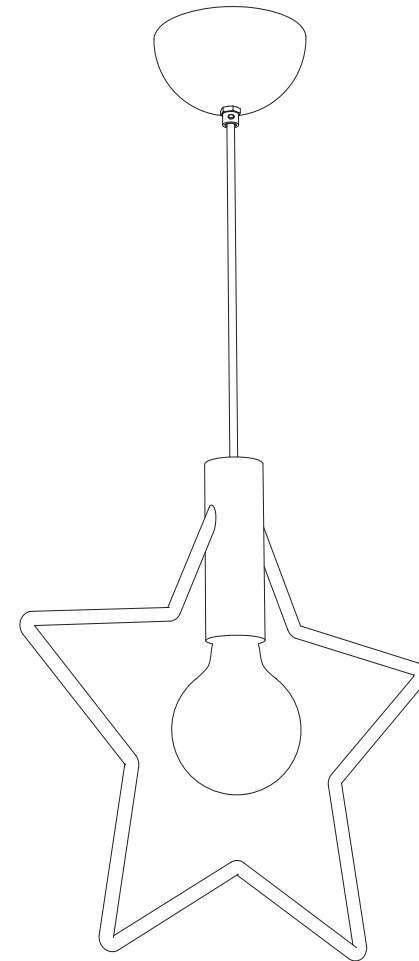
CONTENT OF THE BOX



In the box, you will find *either* the Cloud Pendant or the Star Pendant with matching canopy - and:

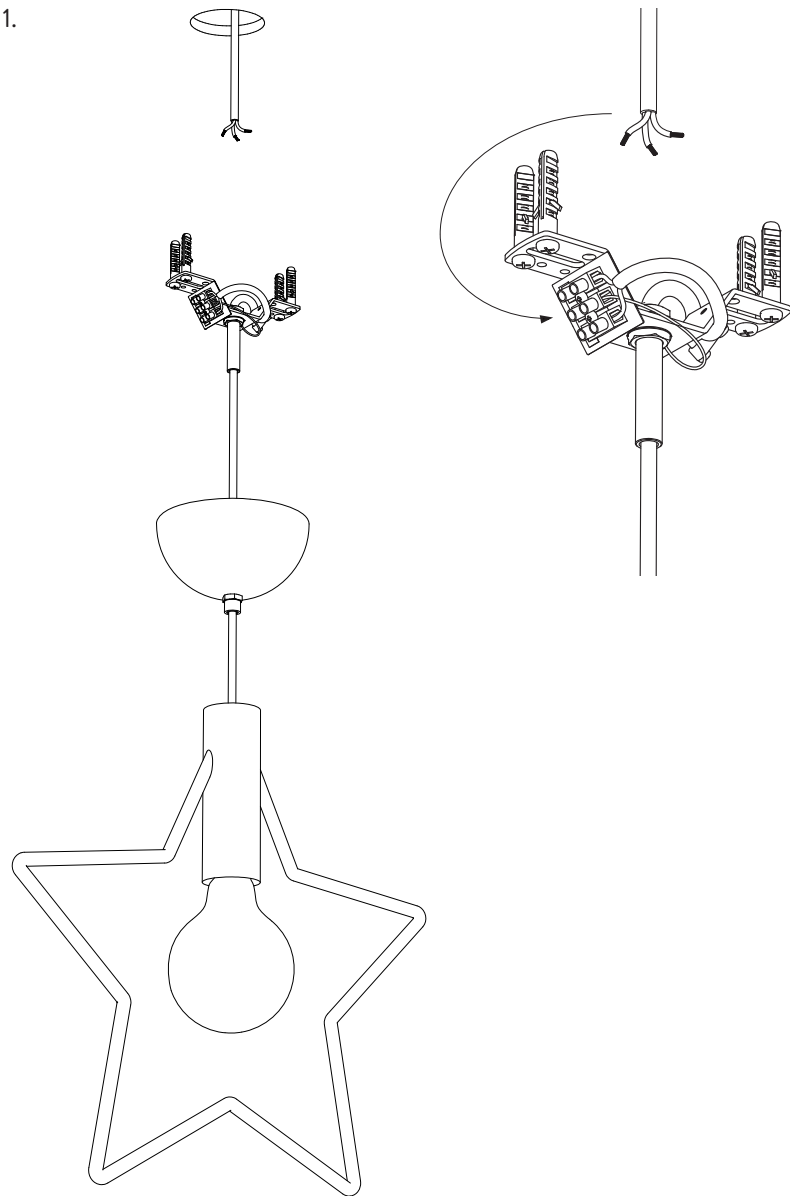


ASSEMBLY PROCESS



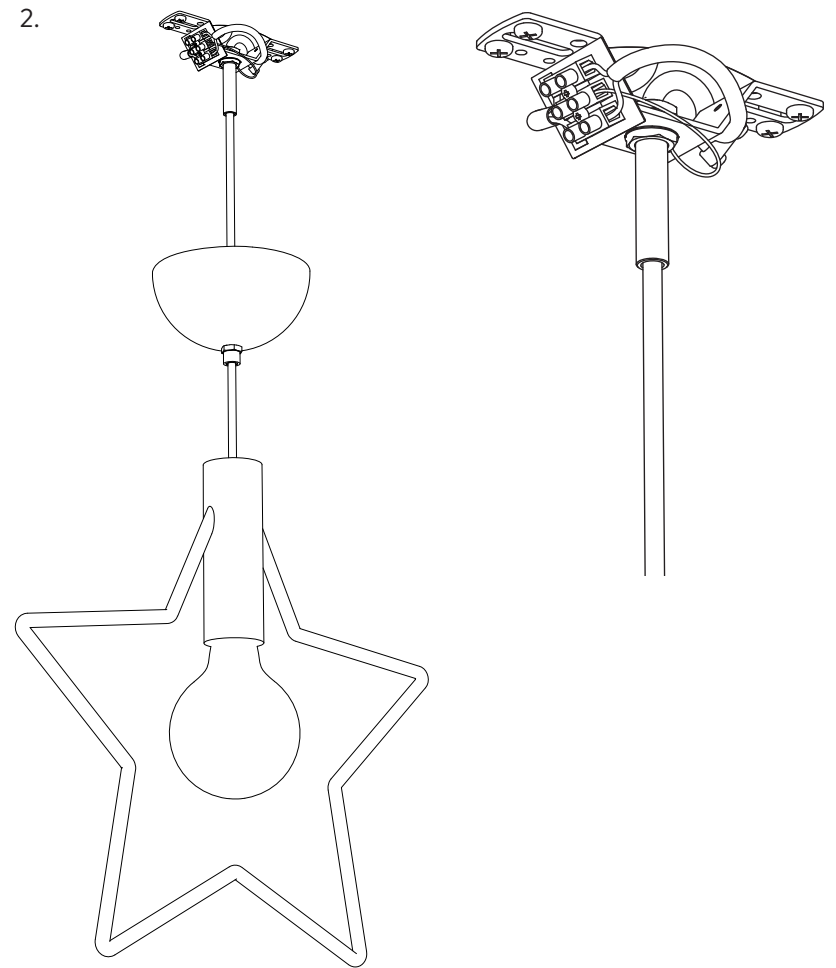
ASSEMBLY PROCESS

1.



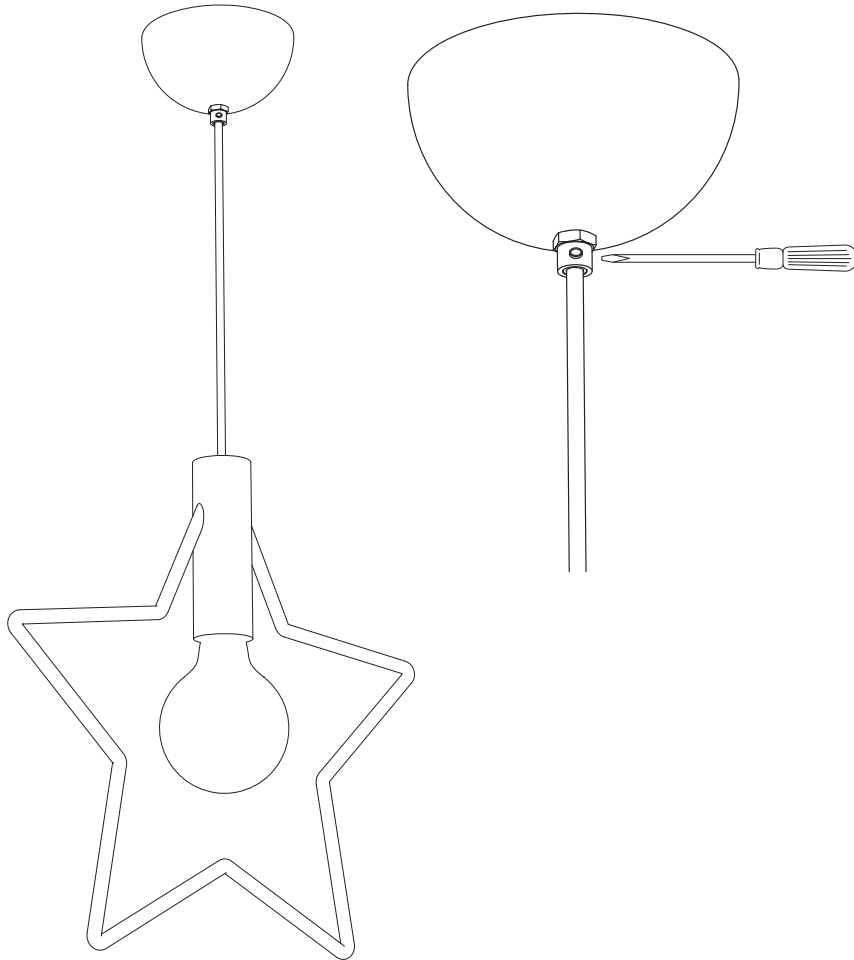
ASSEMBLY PROCESS

2.



ASSEMBLY PROCESS

3.



LAMPS RATING & BULB SPECIFIKATION

Voltage :	220-240V	Assembly :	Due to earth connection (Class I) mounting of this lamp should be carried out by a licened electrician
Frequence :	50Hz	Attention :	If the external flexible cable or cord of this luminaire is damaged, it shall be exclusively replaced by the manufacturer or his service agent or a similar qualified person in order to avoid a hazard.
IP Rating :	IP20	Care & cleaning :	Clean with a soft dry cloth. Always switch off the electricity before cleaning.
Classification :	Class I		
Socket :	E27 socket base.		
Recomended light source :	Max. 25 W / CFL Max. 13 W LED G95 or G125		
Energy efficiency :	The luminaire is compatible with bulb of the energy classes: A++-E.		
Dimmable :	Yes, when using a dimmable bulb		
Certification :	CE approved: This product has been assessed and complies with the essential requirements of the relevant European directives.		

