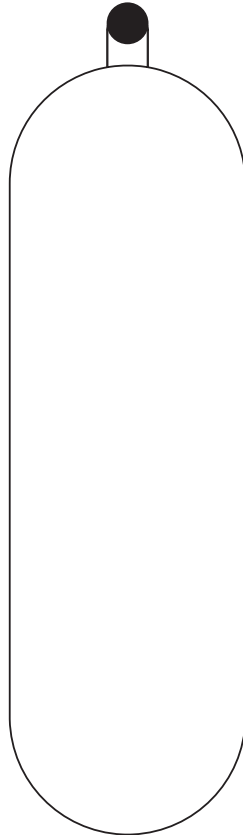


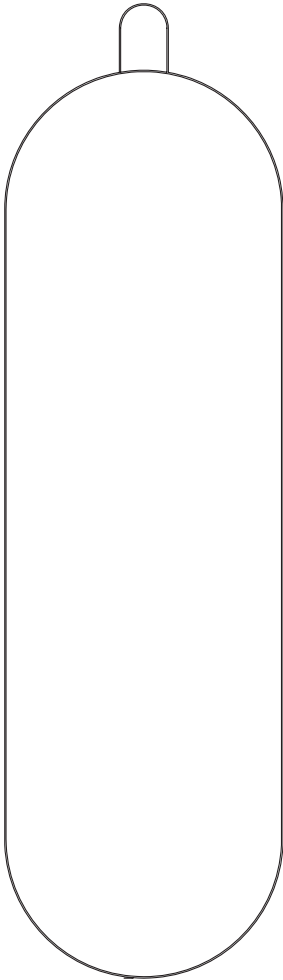
POISE OVAL MIRROR

ASSEMBLY MANUAL

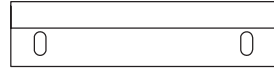


ferm
L I V I N G

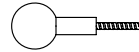
CONTENT OF THE BOX



Mirror x 1



Wall Bracket x 1



Wooden knob with
screw insert x 1



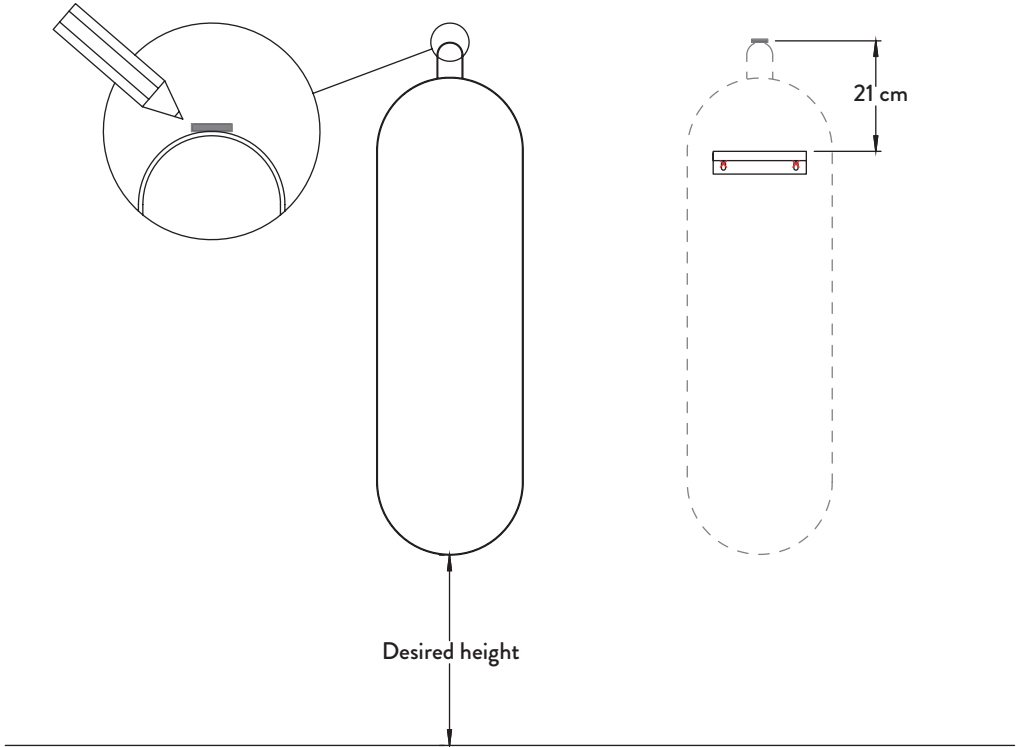
Raw-Plugs x 3



Screws x 2

Please pay attention to the type of screws and raw plugs included and note that different wall requires different types of screws and raw plugs. So make sure it fits your wall.

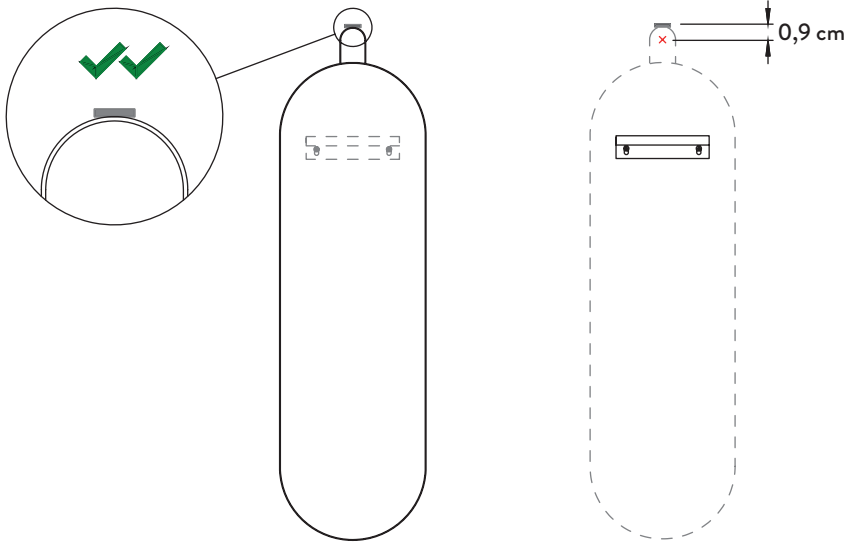
ASSEMBLY PROCESS



1_ Place the mirror on the wall at the desired height and make a small mark with a pencil on the top of the mirror.

2_ After putting down the mirror, place the wall bracket as indicated and mark the two holes. Next, drill the holes, fit the rawlplugs in them and screw the bracket on the wall.

ASSEMBLY PROCESS



3_ Hang the mirror from the bracket and double check that the top mark is still correctly placed on the top of the mirror. If the mark doesn't match, make a new one.

4_ Put down the mirror and make a new small mark 9mm below the top mark. Drill a hole in it, fit a rawlplug and screw the top knob in place.

ASSEMBLY PROCESS



5_ The mirror is ready to hang safely!

fermliving.com