

Made To Order

AW2023



& Customisation Concept

Fabric Overview

MADE TO ORDER

An Introduction to the ferm LIVING Customisation Concept. Tailor ferm LIVING furniture after your specific tastes to create your ideal design.

ONE SIZE DOESN'T FIT ALL

Our homes are distinct, personal spaces that uniquely reflect the people who live there. They say the magic happens in the details, and often, that's what makes us fall in love with a specific piece that we want to move into our home. That is precisely why we have introduced the ferm LIVING customisation concept, so that you can tailor selected pieces to fit your specific taste.

With our Made to Order products, you can choose between a wide variety of fabrics and leathers that we have selected among leading textile and leather suppliers, making it possible for you to customise your furniture with an array of materials and colour combinations.

THE PERFECT FIT

All of our sofas and seating collection are included in the customisation concept. Among them are Rico, Turn and family of Herman Chairs.

For our sofas, you can choose between an exciting variety of textiles that range from faded velvet, cottons, linens and wool, available in an array of colours and patterns from premium fabric suppliers that include Kvadrat, Sørensen Leather and Gabriel.

For our Herman Chairs, there are a wide range of options available: customise everything from the frame to the colour of wooden backrest, and choose between various seat fabrics, woods and leathers to form your ideal chair.

To see a complete selection of our Made to Order materials, please refer to the Customisation Concept section of our Product Overview, where you can get an overview of all of the different customisation options that we offer.

CUSTOMISATION CONCEPT

2023

The Customisation Concept serves as an overview of the various textiles and types of leather available for ferm LIVING's upholstered furniture. The materials have been handpicked so you can make our furniture your own.

FABRIC & LEATHER OPTIONS

	CATENA COLLECTION	RICO COLLECTION	HERMAN COLLECTION	TURN COLLECTION
<i>Price Group 1</i>				
Cotton Linen	•		•	•
Brushed		•	•	•
<i>Price Group 2</i>				
Faded Velvet		•		
Rich Velvet		•		
Hot Madison	•			•
Cyber		•	•	•
Grain	•	•	•	•
<i>Price Group 3</i>				
Pasadena	•		•	•
Louisiana	•	•	•	
Focus		•		•
Bouclé	•	•	•	•
Check	•			
<i>Price Group 4</i>				
Leather – Ultra			•	
Tonus 4		•	•	•
Steelcut Trio 3			•	•
Confetti Bouclé	•	•		
Rich Linen	•			
Wool Bouclé	•	•		
<i>Price Group 5</i>				
Hallingdal 65	•	•	•	•
Fiord 2			•	•
Patchwork	•			
<i>Price Group 6</i>				
Leather - Envy			•	

COTTON LINEN

Composition

60% cotton
40% linen

Fire rating

CAL117: pass
EN 1021 1/2: not pass
BS 5852 0.1 C&M: pass with a
Crib5 interliner - on request
BS 5852 Crib5: not pass

Martindale

24.000

Price group

1

Care instructions

Vacuum frequently on medium power.
Remove wet stains by carefully dabbing with
a lint-free cloth or sponge wrung in warm
detergent-free water. If the stain remains,
we recommend professional dry cleaning.

Colour fastness to light

Scale 1-5 or 1-8; 1 worst and 5 or 8 best
4 (8)

Pass for

Catena
Herman
Turn



Natural

BRUSHED

Composition

100% polyester

Fire rating

CAL117: pass
EN 1021 1/2: not pass
BS 5852 0.1 C&M: not pass - See alternative
UK only option under Fabric Overview
UK / Soft FR.
BS 5852 Crib5: not pass

Martindale

90.000

Price group

1

Care instructions

Vacuum frequently on medium power.
Remove wet stains by carefully dabbing with
a lint-free cloth or sponge wrung in warm
detergent-free water. If the stain remains,
we recommend professional dry cleaning.

Colour fastness to light

Scale 1-5 or 1-8; 1 worst and 5 or 8 best
5 (5)

Pass for

Herman
Rico
Turn



Off-White



Sand



Warm Grey

FADED VELVET

Composition

51% acrylic
40% polyester
9% viscose

Fire rating

CAL117: pass
EN 1021 1/2: not pass
BS 5852 0.1 C&M: not pass
BS 5852 Crib5: not pass

Martindale

60.000

Price group

2

Care instructions

Vacuum frequently on medium power.
Remove wet stains by carefully dabbing with a lint-free cloth or sponge wrung in warm detergent-free water.

Colour fastness to light

Scale 1-5 or 1-8; 1 worst and 5 or 8 best
5 (8)

Pass for

Rico

More information [here](#).



RICH VELVET

Composition

100% polyester

Fire rating

CAL117: pass
 EN 1021 1/2: pass
 BS 5852 0.1 C&M: pass
 BS 5852 Crib5: not pass

Martindale

170.000

Price group

2

Care instructions

Vacuum frequently on medium power.
 Remove wet stains by carefully dabbing with a lint-free cloth or sponge wrung in warm detergent-free water.

Colour fastness to light

Scale 1-5 or 1-8; 1 worst and 5 or 8 best
 6 (8)

Pass for

Rico

[More information here.](#)



HOT MADISON

By Jab

Composition

63% cotton
37% linen

Fire rating

CAL117: pass
EN 1021 1/2: not pass
BS 5852 0.1 C&M: not pass - See alternative
UK only option under Fabric Overview
UK / Linara FR.
BS 5852 Crib5: not pass

Martindale

55.000

Price group

2

Care instructions

Vacuum frequently on medium power.
Remove wet stains by carefully dabbing with a lint-free cloth or sponge wrung in warm detergent-free water. If the stain remains, we recommend professional dry cleaning.

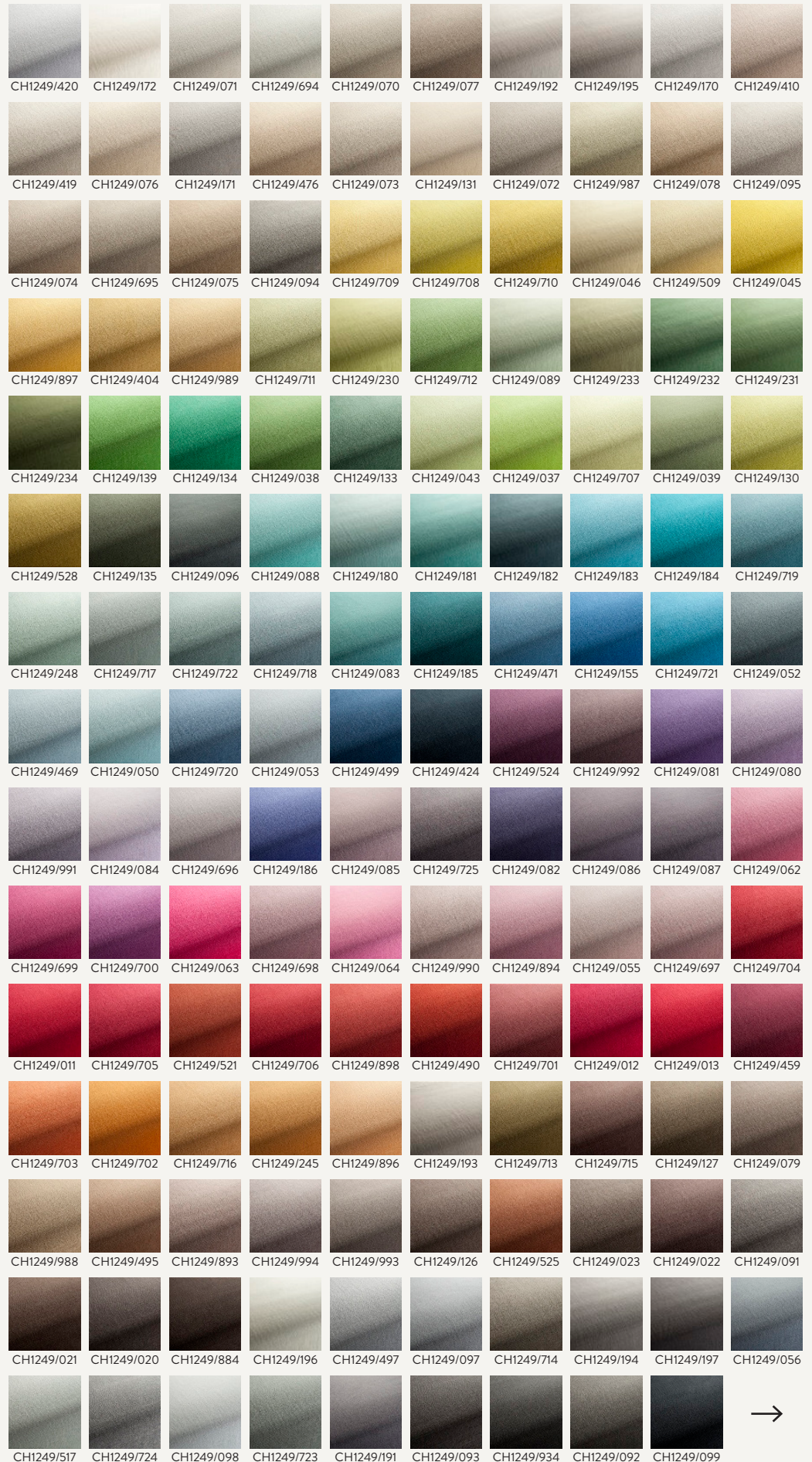
Colour fastness to light

Scale 1-5 or 1-8; 1 worst and 5 or 8 best
4-5 (8)

Pass for

Catena
Turn

More information [here](#):



HOT MADISON

By Jab

Composition

63% cotton
37% linen

Fire rating

CAL117: pass
EN 1021 1/2: not pass
BS 5852 0.1 C&M: not pass - See alternative
UK only option under Fabric Overview
UK / Linara FR.
BS 5852 Crib5: not pass

Martindale

55.000

Price group

2

Care instructions

Vacuum frequently on medium power.
Remove wet stains by carefully dabbing with
a lint-free cloth or sponge wrung in warm
detergent-free water. If the stain remains,
we recommend professional dry cleaning.

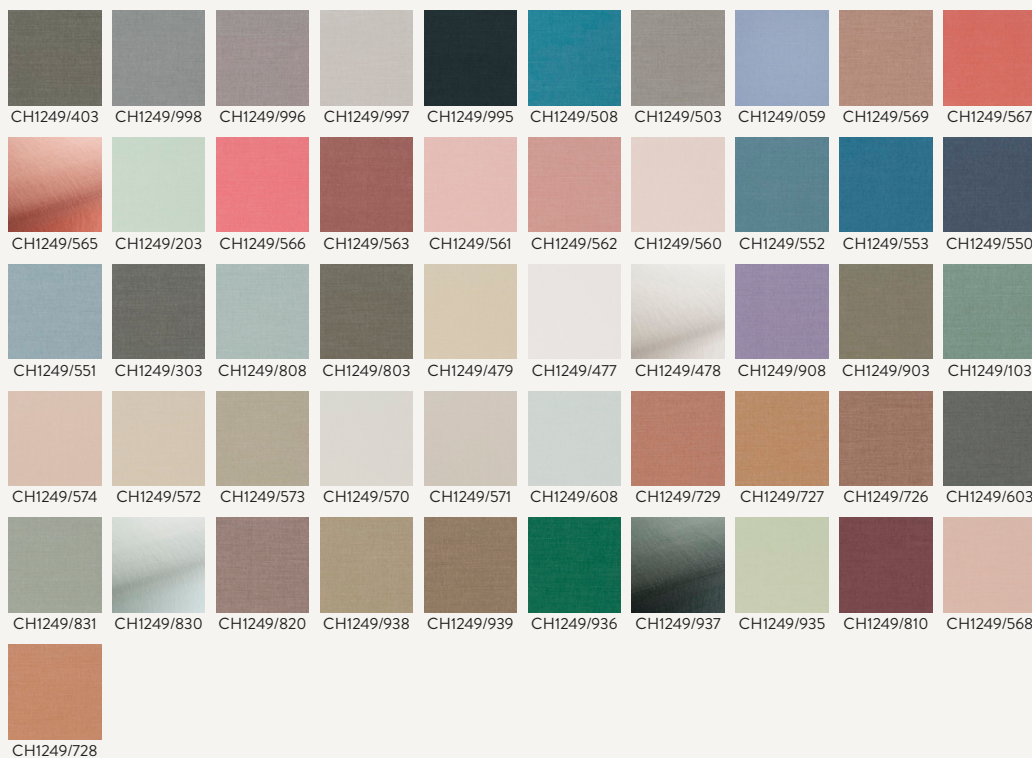
Colour fastness to light

Scale 1-5 or 1-8; 1 worst and 5 or 8 best
4-5 (8)

Pass for

Catena
Turn

[More information here.](#)



CYBER

By Gabriel

Composition

100% post-consumer recycled polyester

Sustainability

STANDARD 100 by OEKO-TEX®
EU Ecolabel

Fire rating

CAL117: pass
EN 1021 1/2: pass
BS 5852 0.1 C&M: not pass
BS 5852 Crib5: not pass

Martindale

120.000

Price group

2

Care instructions

Vacuum frequently on medium power.
Remove wet stains by carefully dabbing with a lint-free cloth or sponge wrung in warm detergent-free water. If the stain remains, we recommend professional dry cleaning.

Colour fastness to light

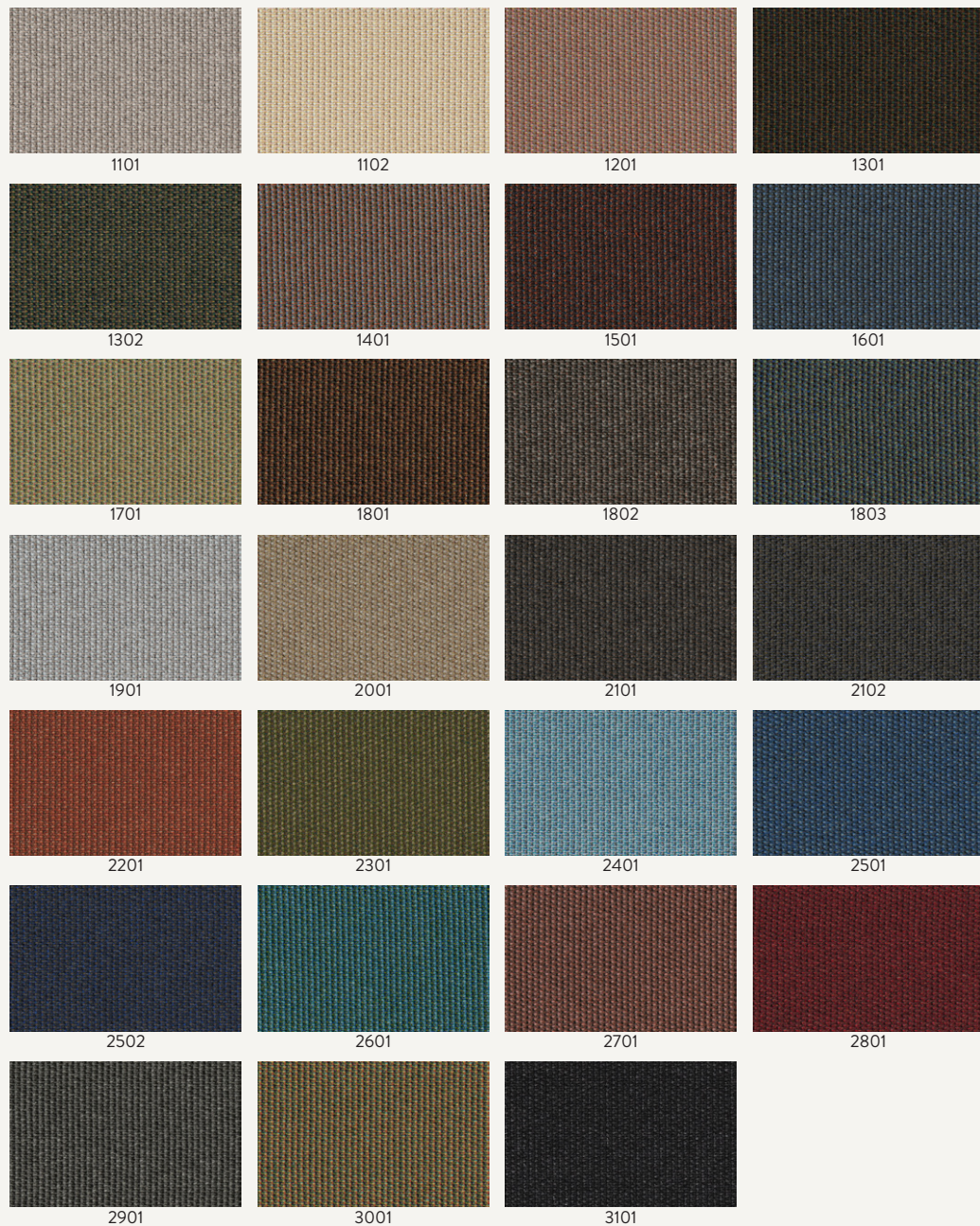
Scale 7-8 (8)

4-5 (8)

Pass for

Herman
Rico
Turn

More information [here](#).



GRAIN

By Gabriel

Composition

2287 (unicolor): 92% post-consumer recycled polyester / 8% polyester
2288 (melange): 80% post-consumer recycled polyester / 20% polyester

Sustainability

STANDARD 100 by OEKO-TEX®

Fire rating

CAL117: pass
EN 1021 1/2: pass
BS 5852 0.1 C&M: not pass
BS 5852 Crib5: not pass

Martindale

100.000

Price group

2

Care instructions

Vacuum frequently on medium power.
Remove wet stains by carefully dabbing with a lint-free cloth or sponge wrung in warm detergent-free water. If the stain remains, we recommend professional dry cleaning.

Colour fastness to light

Scale 1-5 or 1-8; 1 worst and 5 or 8 best
5-7 (8)

Pass for

Catena
Rico
Herman
Turn

More information [here](#).



PASADENA

Composition

34% linen
27% viscose
17% polyester
12% cotton
8% wool
2% acrylic

Fire rating

CAL117: pass
EN 1021 1/2: pass with treatment
BS 5852 0.1 C&M: pass with treatment
BS 5852 Crib5: not pass

Martindale

30.000

Price group

3

Care instructions

Vacuum frequently on medium power.
Remove wet stains by carefully dabbing with a lint-free cloth or sponge wrung in warm detergent-free water. If the stain remains, we recommend professional dry cleaning.

Colour fastness to light

Scale 1-5 or 1-8; 1 worst and 5 or 8 best
5 (8)

Pass for

Turn
Catena
Herman



Sand/Black

LOUISIANA

Composition

20% wool
20% viscose
15% linen
15% cotton
15% polyester
15% acrylic

Fire rating

CAL117: pass
EN 1021 1/2: pass with treatment
BS 5852 0.1 C&M: pass with treatment
BS 5852 Crib5: not pass

Martindale

30.000

Price group

3

Care instructions

Vacuum frequently on medium power.
Remove wet stains by carefully dabbing with a lint-free cloth or sponge wrung in warm detergent-free water. If the stain remains, we recommend professional dry cleaning.

Colour fastness to light

Scale 1-5 or 1-8; 1 worst and 5 or 8 best
5 (8)

Pass for

Catena
Herman
Rico



Sand/Black

CHECK

Composition

30% wool, 20% acrylic, 15% cotton, 15% polyester, 10% linen, 10% viscose

Fire rating

CAL117: pass
EN 1021 1/2: pass
BS 5852 0.1 C&M: pass
BS 5852 Crib5: not pass

Martindale

28.000

Price group

3

Care instructions

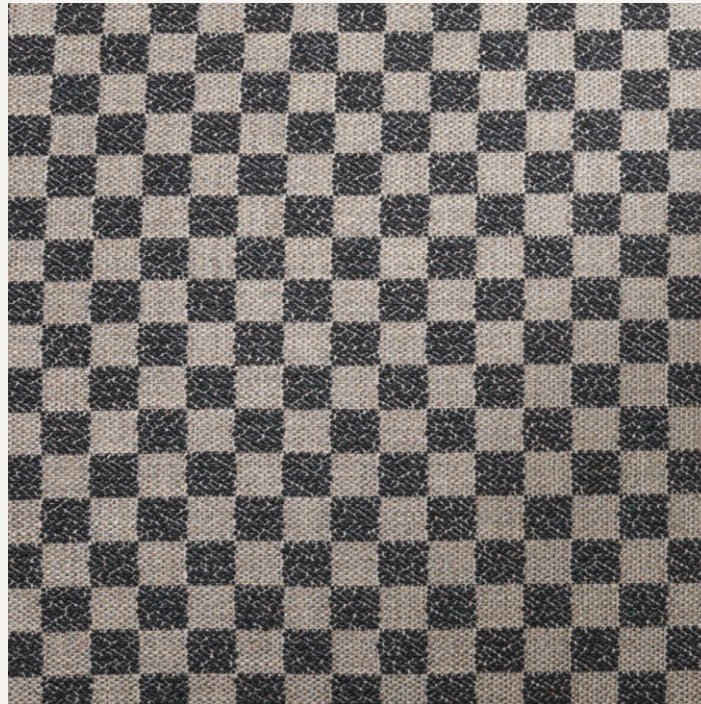
Vacuum frequently on medium power.
Remove wet stains by carefully dabbing with a lint-free cloth or sponge wrung in warm detergent-free water. If the stain remains, we recommend professional dry cleaning.

Colour fastness to light

Scale 1-5 or 1-8; 1 worst and 5 or 8 best
4-5 (8)

Pass for

Catena



Sand/Black

FOCUS

By Gabriel

Composition

100% New Zealand wool

Sustainability

STANDARD 100 by OEKO-TEX®
EU Ecolabel

Fire rating

CAL117: pass
EN 1021 1/2: pass
BS 5852 0.1 C&M: pass
BS 5852 Crib5: not pass

Martindale

100.000

Price group

3

Care instructions

Vacuum frequently on medium power.
Remove wet stains by carefully dabbing with a lint-free cloth or sponge wrung in warm detergent-free water. If the stain remains, we recommend professional dry cleaning.

Colour fastness to light Scale 5-7 (8)

Pass for

Turn
Rico

More information [here](#).



BOUCLÉ

Composition

35% acrylic
24% polyester
19% viscose
14% cotton
5% linen
3% other fibres

Fire rating

CAL117: pass
EN 1021 1/2: pass
BS 5852 0.1 C&M: pass
BS 5852 Crib5: not pass

Martindale

30.000

Price group

3

Care instructions

Vacuum frequently on medium power.
Remove wet stains by carefully dabbing with a lint-free cloth or sponge wrung in warm detergent-free water. If the stain remains, we recommend professional dry cleaning.

Colour fastness to light

Scale 1-5 or 1-8; 1 worst and 5 or 8 best
4-5 (8)

Pass for

Catena
Herman
Turn
Rico



Off-White



Sand

ULTRA LEATHER

By Sørensen Leather

Composition

100% protected leather

Fire rating

CAL117: pass
 EN 1021 1/2: pass
 BS 5852 0.1 C&M: pass
 BS 5852 Crib5: pass with treatment

Price group

4

Care instructions

Vacuum frequently with a soft brush. For stains use boiled water with natural soap. Whip 2-3 tablespoons of soap flakes in 1 litre water and only use the foam. Apply the foam with a soft cloth, let it dry and wipe off the leather thoroughly with a soft cotton cloth.

Colour fastness to light

Scale 5-7 (8)

≥ 5 (8)

Pass for

Herman

More information [here](#).



TONUS 4

By Kvadrat

Composition
90% new wool
10% helanca

Sustainability
EU Ecolabel
Greenguard Gold

Fire rating
CAL117: pass
EN 1021 1/2: pass
BS 5852 0.1 C&M: pass
BS 5852 Crib5: pass with treatment

Martindale
100.000

Price group
4

Care instructions
Vacuum frequently on medium power.
Remove wet stains by carefully dabbing with a lint-free cloth or sponge wrung in warm detergent-free water. If the stain remains, we recommend professional dry cleaning.

Colour fastness to light
Scale 1-5 or 1-8; 1 worst and 5 or 8 best
5-7 (8)

Pass for
Herman
Turn
Rico

More information [here](#).



STEELCUT TRIO 3

By Kvadrat

Composition
90% new wool
10% nylon

Sustainability
EU Ecolabel
Greenguard Gold

Fire rating
CAL117: pass
EN 1021 1/2: pass
BS 5852 0.1 C&M: pass
BS 5852 Crib5: pass with treatment

Martindale
100.000

Price group
4

Care instructions
Vacuum frequently on medium power.
Remove wet stains by carefully dabbing with a lint-free cloth or sponge wrung in warm detergent-free water. If the stain remains, we recommend professional dry cleaning.

Colour fastness to light
Scale 1-5 or 1-8; 1 worst and 5 or 8 best
5-7 (8)

Pass for
Herman
Turn

More information [here](#).



CONFETTI BOUCLÉ

Composition

40% cotton, 22% acrylic, 16% viscose,
11% wool, 11% polyester

Fire rating

CAL117: pass
EN 1021 1/2: pass
BS 5852 0.1 C&M: pass
BS 5852 Crib5: not pass

Martindale

100.000

Price group

4

Care instructions

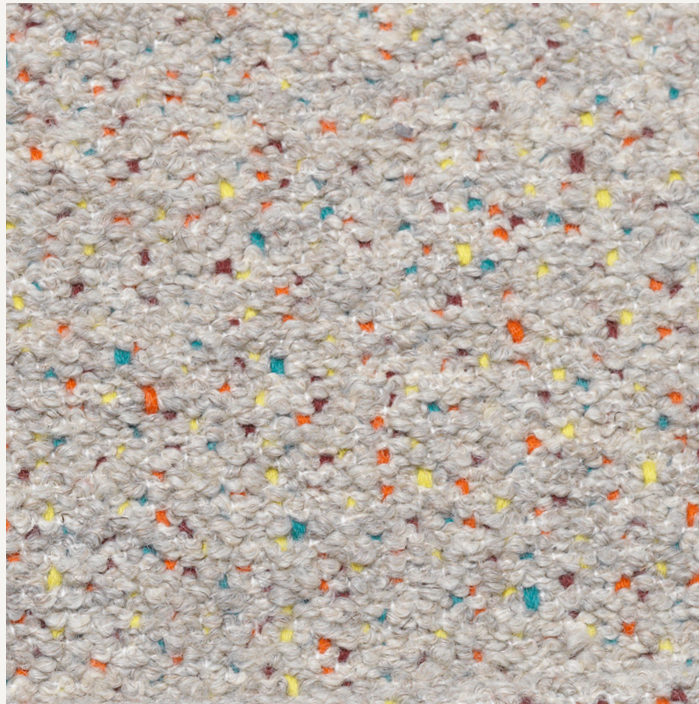
Vacuum frequently on medium power.
Remove wet stains by carefully dabbing with
a lint-free cloth or sponge wrung in warm
detergent-free water. If the stain remains,
we recommend professional dry cleaning.

Colour fastness to light

Scale 5 (8)

Pass for

Catena
Rico



Light Grey

RICH LINEN

Composition

100% linen

Fire rating

CAL117: pass
EN 1021 1/2: not pass
BS 5852 0.1 C&M: not pass - See
alternative UK only option under Fabric
Overview UK / Classic Linen.
BS 5852 Crib5: not pass

Martindale

20.000

Price group

4

Care instructions

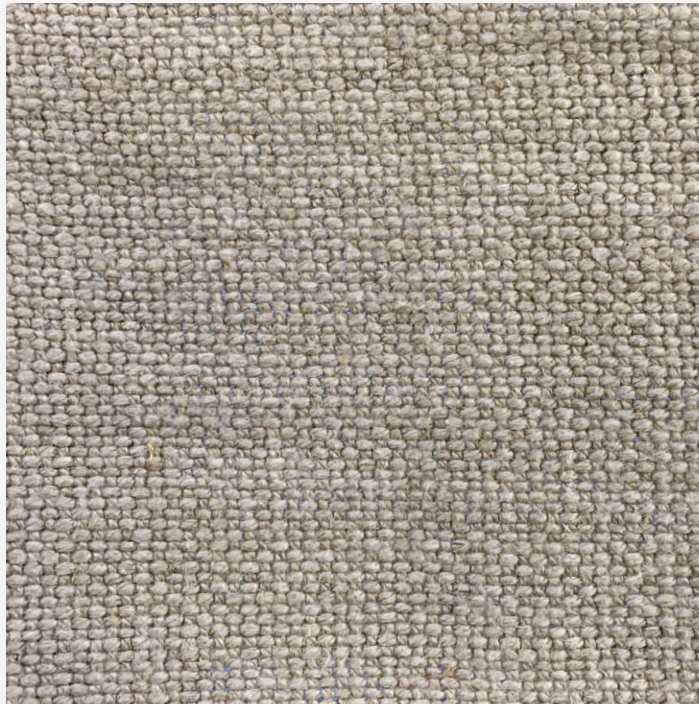
Vacuum frequently on medium power.
Remove wet stains by carefully dabbing with
a lint-free cloth or sponge wrung in warm
detergent-free water. If the stain remains,
we recommend professional dry cleaning.

Colour fastness to light

Scale 1-5 or 1-8; 1 worst and 5 or 8 best
4 (5)

Pass for

Catena



Natural

WOOL BOUCLÉ

Composition

32% cotton, 61% wool and 7% nylon

Fire rating

CAL117: pass
EN 1021 1/2: pass
BS 5852 0.1 C&M: pass
BS 5852 Crib5: not pass

Martindale

25.000

Price group

4

Care instructions

Vacuum frequently on medium power.
Remove wet stains by carefully dabbing with a lint-free cloth or sponge wrung in warm detergent-free water. If the stain remains, we recommend professional dry cleaning.

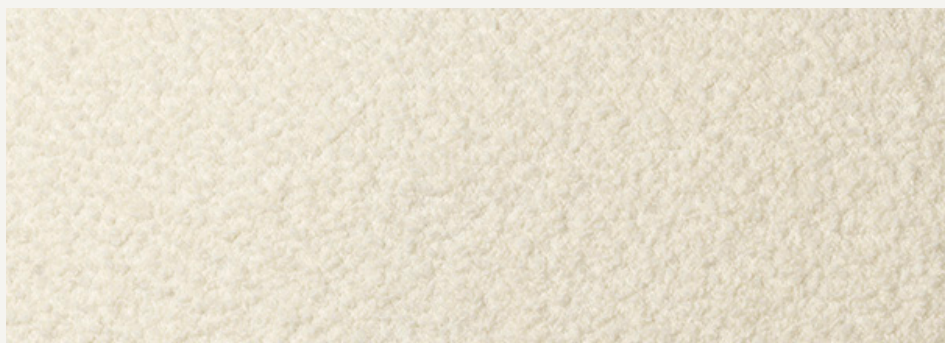
Colour fastness to light

Scale 1-5 or 1-8; 1 worst and 5 or 8 best

4 (5)

Pass for

Catena
Rico



Off-white



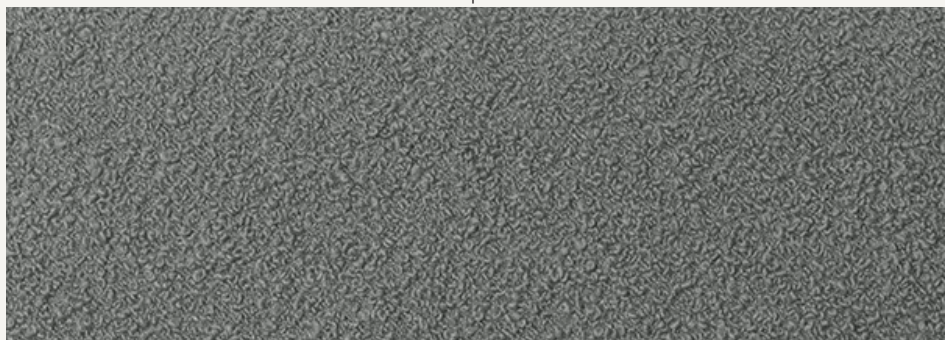
Natural



Sugar Kelp



Deep Blue



Grey

HALLINGDAL 65

By Kvadrat

Composition

70% new wool
30% viscose

Sustainability

EU Ecolabel
Greenguard Gold

Fire rating

CAL117: pass
EN 1021 1/2: pass
BS 5852 0.1 C&M: pass
BS 5852 Crib5: pass

Martindale

100.000

Price group

5

Care instructions

Vacuum frequently on medium power.
Remove wet stains by carefully dabbing with a lint-free cloth or sponge wrung in warm detergent-free water. If the stain remains, we recommend professional dry cleaning.

Colour fastness to light

Scale 1-5 or 1-8; 1 worst and 5 or 8 best
5-7 (8)

Pass for

Catena
Herman
Turn
Rico

More information [here](#).



FIORD 2

By Kvadrat

Composition

92% new wool
8% nylon

Sustainability

EU Ecolabel
Greenguard Gold

Fire rating

CAL117: pass
EN 1021 1/2: pass
BS 5852 0.1 C&M: pass
BS 5852 Crib5: pass with treatment

Martindale

60.000

Price group

5

Care instructions

Vacuum frequently on medium power.
Remove wet stains by carefully dabbing with a lint-free cloth or sponge wrung in warm detergent-free water. If the stain remains, we recommend professional dry cleaning.

Colour fastness to light

Scale 1-5 or 1-8; 1 worst and 5 or 8 best

6 (8)

Pass for

Herman
Turn

[More information here.](#)



PATCHWORK

Composition

Patchwork with mixed fabrics including:
Classic Linen: 100% linen
Rich Linen: 100% linen
Bouclé: 35% acrylic, 24% polyester,
19% viscose, 14% cotton, 5% linen,
3% other fibres
Re-Cotton: 85% recycled cotton,
10% recycled polyester, 5% other fibers
Hot Madison: 63% cotton, 37% linen.

Fire rating

CAL117: not pass
EN 1021 1/2: not pass
BS 5852 0.1 C&M: not pass
BS 5852 Crib5: not pass

Martindale

Classic Linen: 25,000
Rich Linen: >20,000
Bouclé: 30,000
Re-Cotton: >30,000
Hot Madison: 55,000

Price group

5

Care instructions

Vacuum frequently on medium power.
Remove wet stains by carefully dabbing with
a lint-free cloth or sponge wrung in warm
detergent-free water. If the stain remains,
we recommend professional dry cleaning.

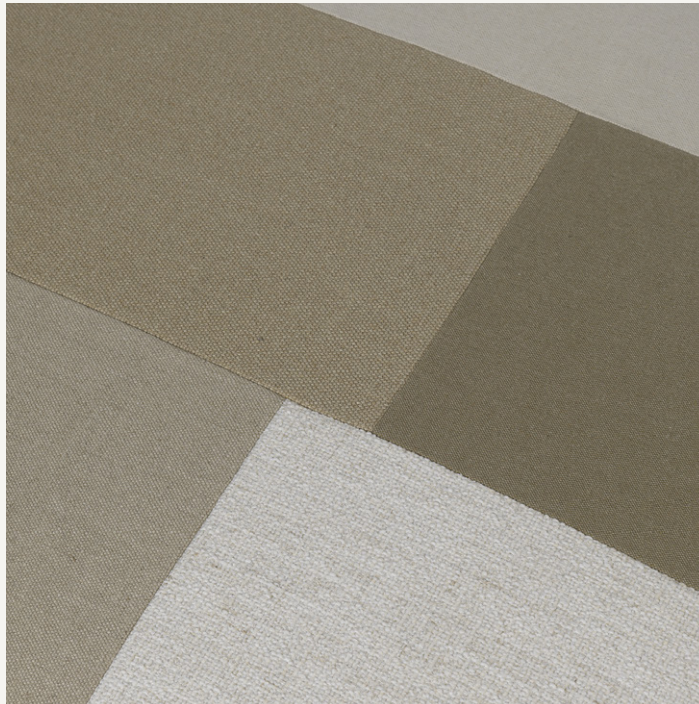
Colour fastness to light

Scale 1-5 or 1-8; 1 worst and 5 or 8 best

Classic Linen: 4 (5)
Rich Linen: 4 (5)
Bouclé: 4-5 (8)
Re-Cotton: ≥4 (5)
Hot Madison: 4-5 (8)

Pass for

Catena (Large size ONLY)



Patchwork

LEATHER - ENVY

By Sørensen Leather

Composition

100% aniline leather

Fire rating

CAL117: pass
EN 1021 1/2: pass
BS 5852 0.1 C&M: not tested
BS 5852 Crib5: not pass

Price group

6

Care instructions

Vacuum frequently with a soft brush. For stains use boiled water with natural soap. Whip 2-3 tablespoons of soap flakes in 1 litre water and only use the foam. Apply the foam with a soft cloth, let it dry and wipe off the leather thoroughly with a soft cotton cloth.

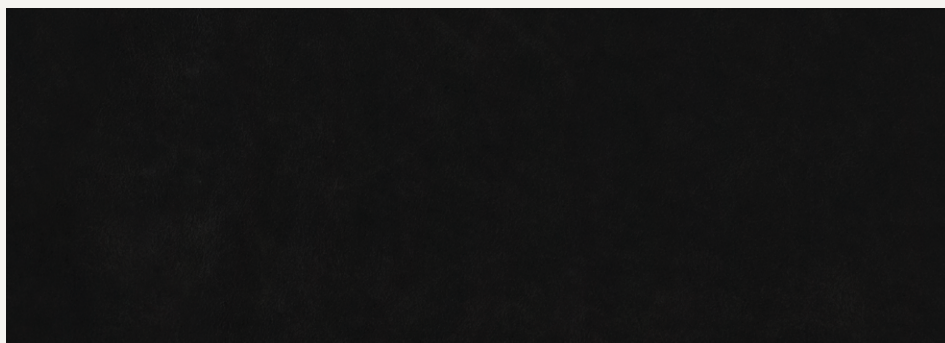
Colour fastness to light

Scale 3 (8)

Pass for

Herman

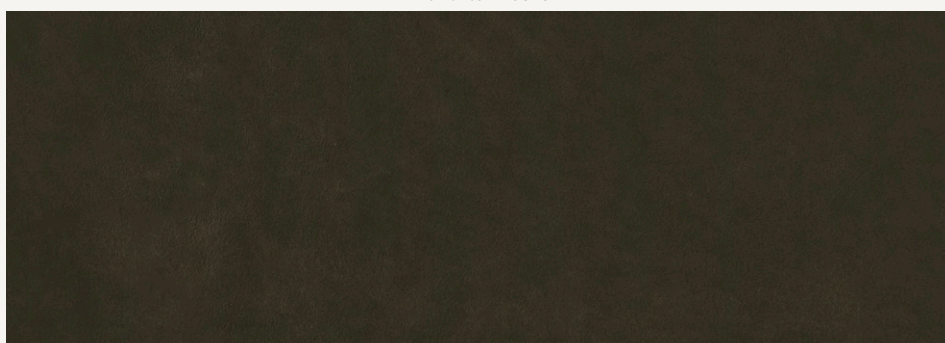
More information [here](#).



Black - 20321



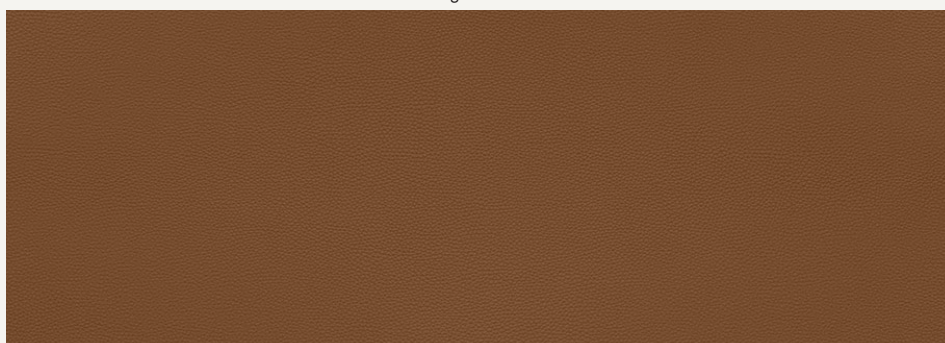
Anthrazite - 20323



Olive - 20324



Nougat - 20322



Cognac - 20320

For more information please contact your
firm LIVING sales contact

Space to feel comfortably you