

Made To Order

2022

& Customisation Concept



Fabric Overview

ferm
L I V I N G

MADE TO ORDER

An Introduction to the firm LIVING Customisation Concept. Tailor firm LIVING furniture after your specific tastes to create your ideal design.

ONE SIZE DOESN'T FIT ALL

Our homes are distinct, personal spaces that uniquely reflect the people who live there. They say the magic happens in the details, and often, that's what makes us fall in love with a specific piece that we want to move into our home. That is precisely why we have introduced the firm LIVING customisation concept, so that you can tailor selected pieces to fit your specific taste.

With our Made to Order products, you can choose between a wide variety of fabrics and leathers that we have selected among leading textile and leather suppliers, making it possible for you to customise your furniture with an array of materials and colour combinations.

THE PERFECT FIT

All of our sofas and seating collection are included in the customisation concept. Among them are Rico, Turn and Catena, as well as our series of Poufs, the new Kona Bed Mattress and family of Herman Chairs.

For our sofas, you can choose between an exciting variety of textiles that range from faded velvet, cottons, linens and wool, available in an array of colours and patterns from premium fabric suppliers that include Kvadrat, Sørensen Leather and Gabriel.

For our Herman Chairs, there are a wide range of options available: customise everything from the frame to the colour of wooden backrest, and choose between various seat fabrics, woods and leathers to form your ideal chair.

To see a complete selection of our Made to Order materials, please refer to our catalogue, where you can get an overview of all of the different customisation options that we offer.

CUSTOMISATION CONCEPT

2022

The Customisation Concept serves as an overview of the various textiles and types of leather available for firm LIVING's upholstered furniture. The materials have been handpicked so you can make our furniture your own.

FABRIC & LEATHER OPTIONS

	CATENA COLLECTION	RICO COLLECTION	HERMAN COLLECTION	TURN COLLECTION
<i>Price Group 1</i>				
Cotton Linen	•		•	•
Brushed		•	•	•
<i>Price Group 2</i>				
Faded Velvet		•		
Hot Madison	•			•
Cyber			•	•
<i>Price Group 3</i>				
Bouclé	•	•	•	•
Leather - Solid			•	
Pasadena	•		•	•
Louisiana		•		
Focus				•
<i>Price Group 4</i>				
Confetti Bouclé	•	•		
Wool Bouclé	•	•		
Tonus 4		•	•	•
Steelcut Trio 3			•	•
Rich Linen	•			
<i>Price Group 5</i>				
Hallingdal 65	•	•	•	•
Fiord 2			•	•
<i>Price Group 6</i>				
Leather - Envy			•	

COTTON LINEN

Composition

60% cotton
40% linen

Fire rating

EN 1021 1/2: not pass
CAL 117: not pass
Crib 5: not pass

Martindale

24.000

Price group

1

Care instructions

Vacuum frequently on medium power.
Remove wet stains by carefully dabbing with a lint-free cloth or sponge wrung in warm detergent-free water. If the stain remains, we recommend a chemical dry cleaning product (for instance KR2) or professional dry cleaning.

Colour fastness to light

Scale 1-5 or 1-8; 1 worst and 5 or 8 best
4 (8)

Pass for

Catena
Herman
Turn



Natural

BRUSHED

Composition

100% polyester

Sustainability: Free of heavy metals

Fire rating

EN 1021 1/2: not pass

Crib 5: not pass

CAL117: pass

Martindale

90.000

Price group

1

Care instructions

Vacuum frequently on medium power.
Remove wet stains by carefully dabbing with a lint-free cloth or sponge wrung in warm detergent-free water. If the stain remains, we recommend a chemical dry cleaning product (for instance KR2) or professional dry cleaning.

Colour fastness to light

Scale 1-5 or 1-8; 1 worst and 5 or 8 best

5 (5)

Pass for

Herman

Rico

Turn



Off-White



Sand



Warm Grey

FADED VELVET

Composition

51% acrylic
40% polyester
9% viscose

Fire rating

EN 1021 1/2: not pass
Crib 5: not pass
CAL 117: pass

Martindale

60.000

Price group

2

Care instructions

Vacuum frequently on medium power.
Remove wet stains by carefully dabbing with a lint-free cloth or sponge wrung in warm detergent-free water. If the stain remains, we recommend a chemical dry cleaning product (for instance KR2) or professional dry cleaning.

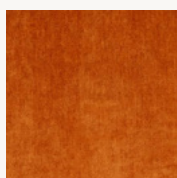
Colour fastness to light

Scale 1-5 or 1-8; 1 worst and 5 or 8 best
5 (8)

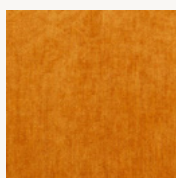
Pass for

Rico

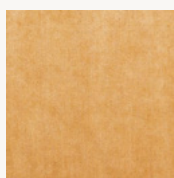
More information [here](#).



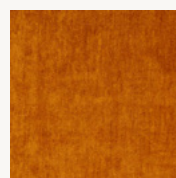
Trend 42K4 Terry pot



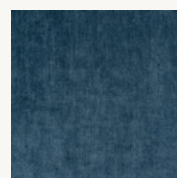
Trend 05C6 Persimon



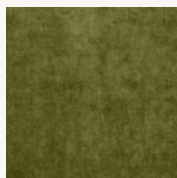
Trend 4203 Camel



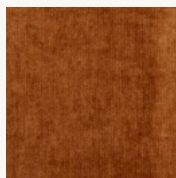
Trend 05EP Saffron



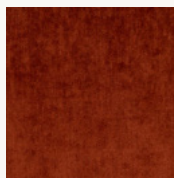
Trend G701 Diesel blue



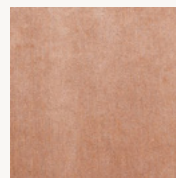
Trend 16CY Blade



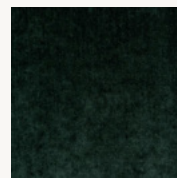
Trend 1712 Cumin



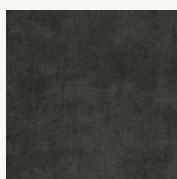
Trend 1388 Deep brick



Trend 61/20BKQ
Soft rose



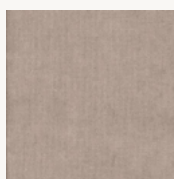
Trend 2450 Solid
Bottle Green



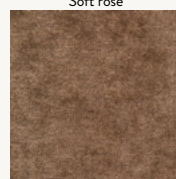
7 graphite



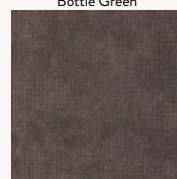
56 Natural A6A1



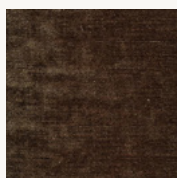
16 sand



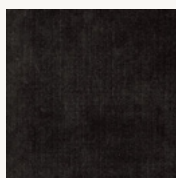
26 Beige 9133



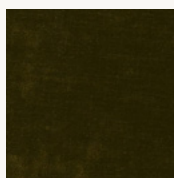
36 light brown



46 Mid brown 81J5



6 mocca



3 Forest 16Y8



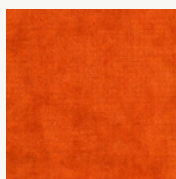
15 Lion 38BNBK



23 olive



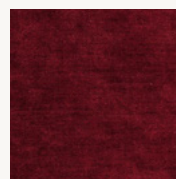
5 Gold 05J2



31 orange



41 Rouge 13K9



1 wine



21 cerise



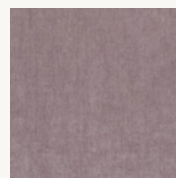
81 Pastell pink 10E5BK



11 lipstick



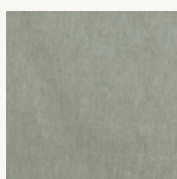
51 Aubergine 6115



91 Pastell violet 1041BK



71 violet



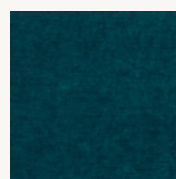
83 Pastell green 1006BK



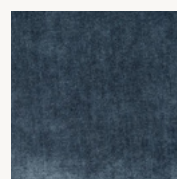
32 Petrol 3004



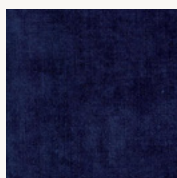
22 turquoise



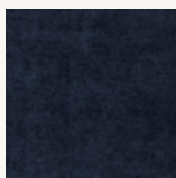
52 Lagoon G7F7BK



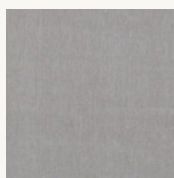
12 Denim 30M7



2 midnight



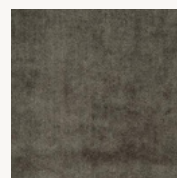
42 Ocean 0232BK



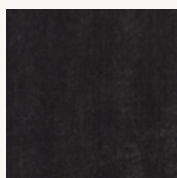
27 Soft silver A629BK



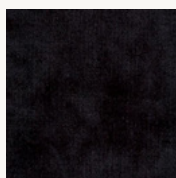
17 concrete



47 Fog 84B8



37 Antracit G2V3BK



4 black

HOT MADISON

By Jab

Composition

63% cotton
37% polyester

Fire rating

EN 1021 1/2: not pass
CAL 117: pass
Crib 5: not pass

Martindale

55.000

Price group

2

Care instructions

Vacuum frequently on medium power.
Remove wet stains by carefully dabbing with a lint-free cloth or sponge wrung in warm detergent-free water. If the stain remains, we recommend a chemical dry cleaning product (for instance KR2) or professional dry cleaning.

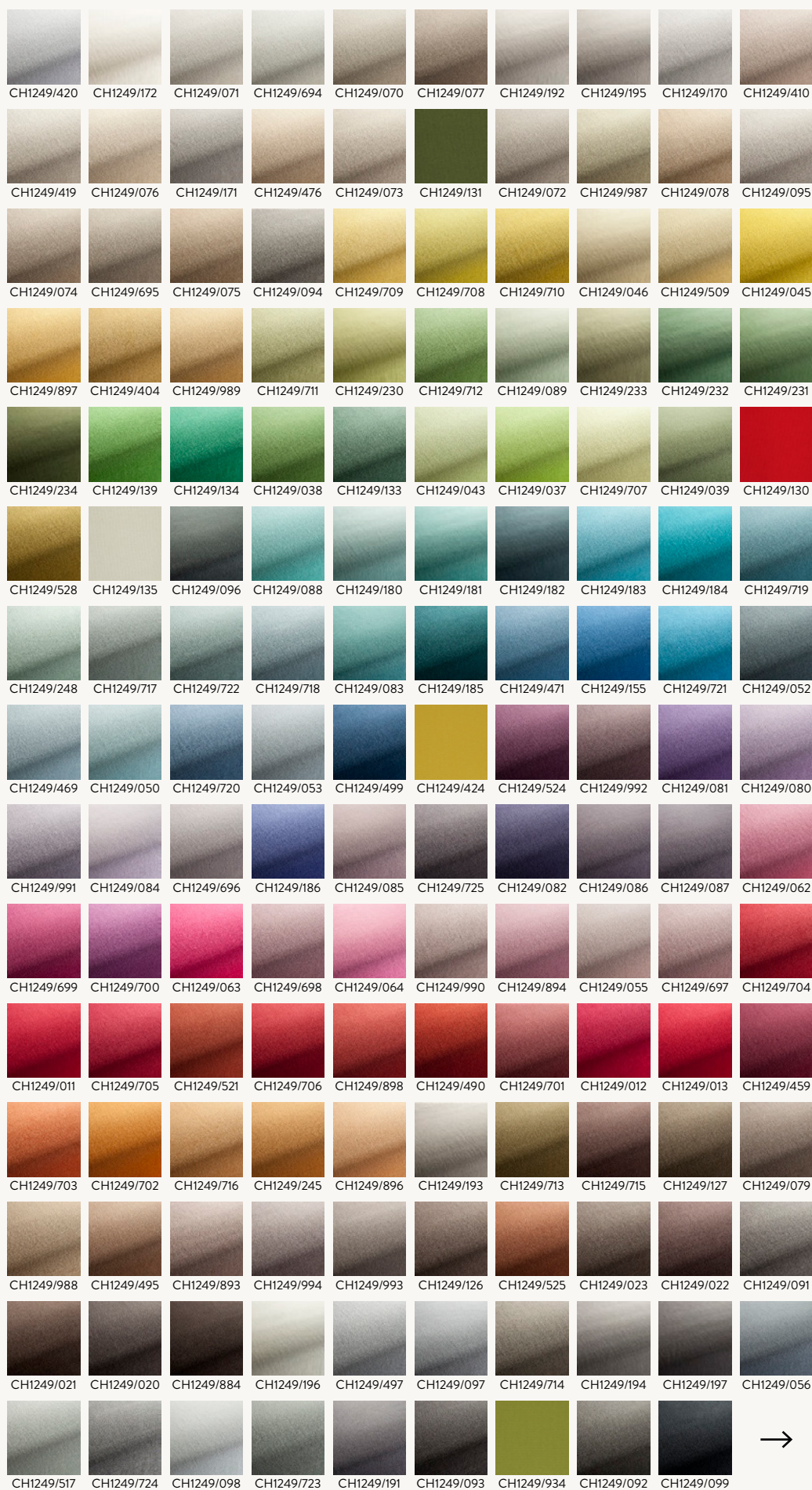
Colour fastness to light

Scale 1-5 or 1-8; 1 worst and 5 or 8 best
4-5 (8)

Pass for

Catena
Turn

More information [here](#):



HOT MADISON

By Jab

Composition

63% cotton
37% polyester

Fire rating

EN 1021 1/2: pass with treatment
CAL 117: pass
Crib 5: not pass

Martindale

55.000

Price group

2

Care instructions

Vacuum frequently on medium power.
Remove wet stains by carefully dabbing with a lint-free cloth or sponge wrung in warm detergent-free water. If the stain remains, we recommend a chemical dry cleaning product (for instance KR2) or professional dry cleaning.

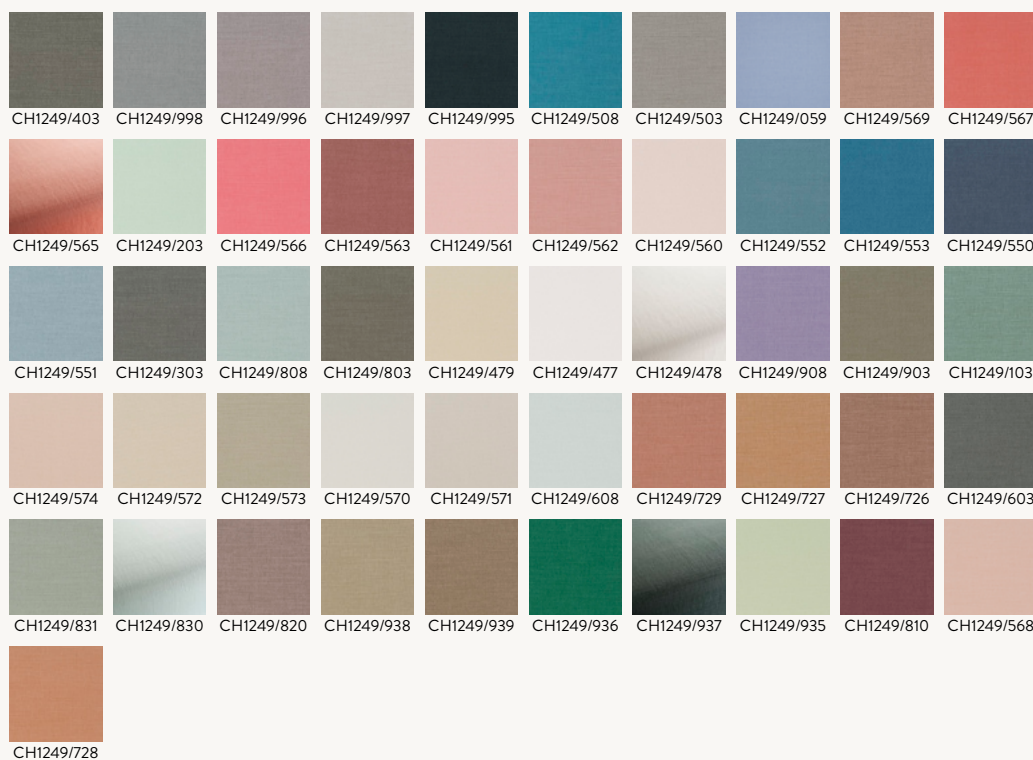
Colour fastness to light

Scale 1-5 or 1-8; 1 worst and 5 or 8 best
4-5 (8)

Pass for

Catena
Turn

More information [here](#).



CYBER

By Gabriel

Composition

100% post-consumer recycled polyester

Sustainability:

STANDARD 100 by OEKO-TEX®
EU Ecolabel

Fire rating

EN 1021 1/2: pass
CAL117: pass
Crib 5: not pass

Martindale

120.000

Price group

2

Care instructions

Vacuum frequently on medium power.
Remove wet stains by carefully dabbing
with a lint-free cloth or sponge wrung in
warm detergent-free water. If the stain
remains, we recommend a chemical dry
cleaning product (for instance KR2) or
professional dry cleaning.

Colour fastness to light

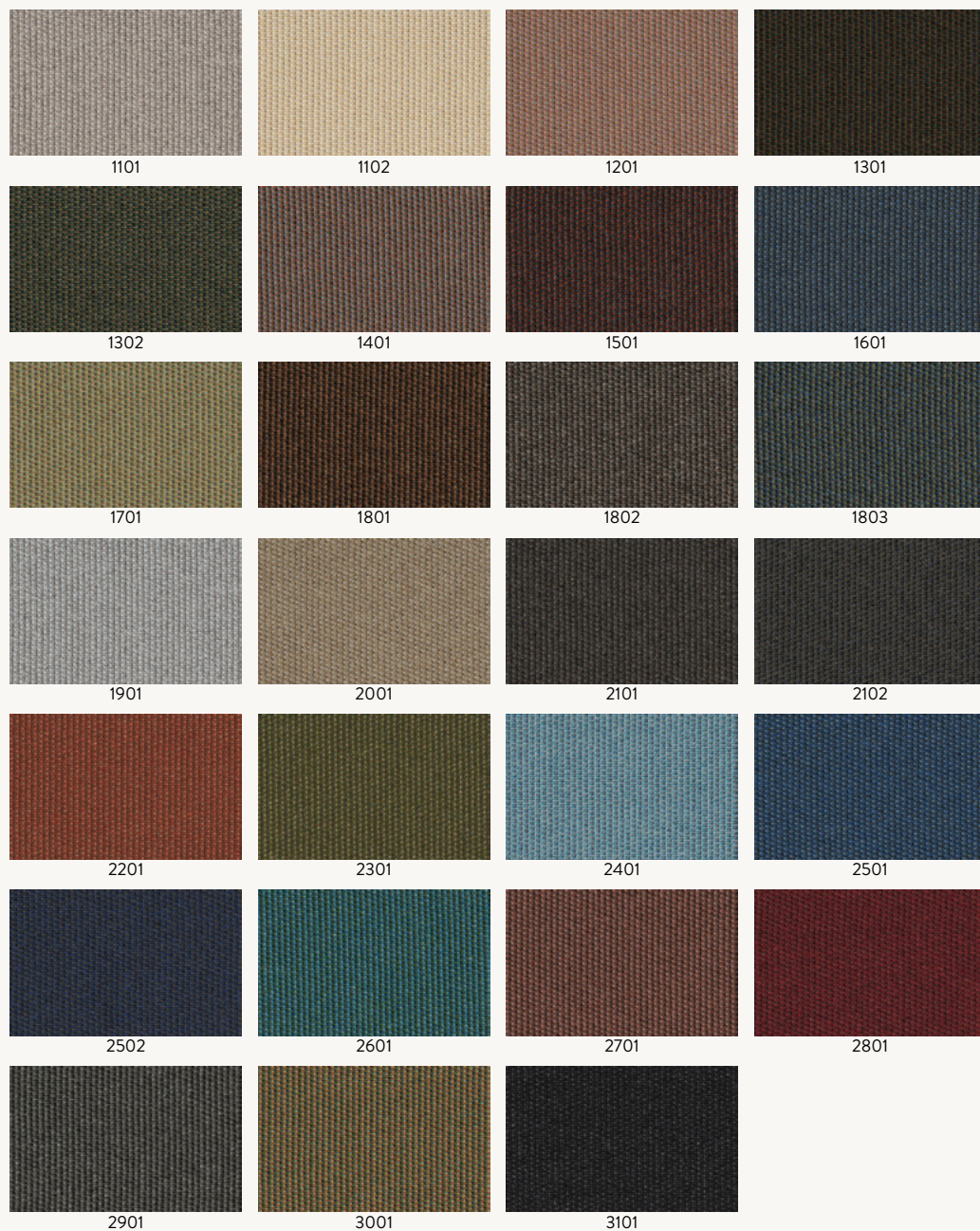
Scale 7-8 (8)

4-5 (8)

Pass for

Herman
Turn

More information [here](#).



SOLID LEATHER

By Sørensen Leather

Composition

100% protected and embossed Buffalo leather

Fire rating

CAL 117: pass
Cri 5: not pass
EN 1021 1/2: pass

Price group

3

Care instructions

Vacuum frequently with a soft brush. For stains use boiled water with natural soap. Whip 2-3 tablespoons of soap flakes in 1 litre water and only use the foam. Apply the foam with a soft cloth, let it dry and wipe off the leather thoroughly with a soft cotton cloth.

Colour fastness to light

Scale 1-5 or 1-8; 1 worst and 5 or 8 best

5 (8)

Pass for

Herman

More information [here](#).



PASADENA

Composition

34% linen
27% viscose
17% polyester
12% cotton
8% wool
2% acrylic

Fire rating

EN 1021 1/2: pass with treatment
CAL 117: pass
Crib 5: pass with treatment

Martindale

30.000

Price group

3

Care instructions

Vacuum frequently on medium power.
Remove wet stains by carefully dabbing with a lint-free cloth or sponge wrung in warm detergent-free water. If the stain remains, we recommend a chemical dry cleaning product (for instance KR2) or professional dry cleaning.

Colour fastness to light

Scale 1-5 or 1-8; 1 worst and 5 or 8 best
5 (8)

Pass for

Turn
Catena
Herman



Sand/Black

LOUISIANA

Composition

34% linen
27% viscose
17% polyester
12% cotton
8% wool
2% acrylic

Fire rating

EN 1021 1/2: pass with treatment
CAL 117: pass
Crib 5: pass with treatment

Martindale

30.000

Price group

3

Care instructions

Vacuum frequently on medium power.
Remove wet stains by carefully dabbing with a lint-free cloth or sponge wrung in warm detergent-free water. If the stain remains, we recommend a chemical dry cleaning product (for instance KR2) or professional dry cleaning.

Colour fastness to light

Scale 1-5 or 1-8; 1 worst and 5 or 8 best
5 (8)

Pass for

Rico



Sand/Black

FOCUS

By Gabriel

Composition
100% New Zealand wool

Sustainability:
STANDARD 100 by OEKO-TEX®
EU Ecolabel

Fire rating
EN 1021 1/2: pass
CAL117: pass
Crib 5: not pass

Martindale
100.000

Price group
3

Care instructions
Vacuum frequently on medium power.
Remove wet stains by carefully dabbing
with a lint-free cloth or sponge wrung in
warm detergent-free water. If the stain
remains, we recommend a chemical dry
cleaning product (for instance KR2) or
professional dry cleaning.

Colour fastness to light
Scale 5-7 (8)

Pass for
Turn

More information [here](#).



BOUCLÉ

Composition

35% acrylic
24% polyester
19% viscose
14% cotton
5% linen
3% other fibres

Fire rating

EN 1021 1/2: pass
CAL 117: pass
Crib 5: not pass

Martindale

30.000

Price group

3

Care instructions

Vacuum frequently on medium power.
Remove wet stains by carefully dabbing
with a lint-free cloth or sponge wrung in
warm detergent-free water. If the stain
remains, we recommend a chemical dry
cleaning product (for instance KR2) or
professional dry cleaning.

Colour fastness to light

Scale 1-5 or 1-8; 1 worst and 5 or 8 best
4-5 (8)

Pass for

Catena
Herman
Turn
Rico



Off-White



Sand

TONUS 4

By Kvadrat

Composition

90% new wool
10% helanca

Sustainability:

EU Ecolabel
Greenguard Gold

Fire rating

EN 1021 1/2: pass
Crib 5: pass with treatment
CAL 117: pass

Martindale

100.000

Price group

4

Care instructions

Vacuum frequently on medium power.
Remove wet stains by carefully dabbing
with a lint-free cloth or sponge wrung in
warm detergent-free water. If the stain
remains, we recommend a chemical dry
cleaning product (for instance KR2) or
professional dry cleaning.

Colour fastness to light

Scale 1-5 or 1-8; 1 worst and 5 or 8 best
5-7 (8)

Pass for

Herman
Turn
Rico

More information [here](#).



STEELCUT TRIO 3

By Kvadrat

Composition

90% new wool
10% nylon

Sustainability

EU Ecolabel
Greenguard Gold

Fire rating

EN 1021 1/2: pass
Crib 5: pass with treatment
CAL 117: pass

Martindale

100.000

Price group

4

Care instructions

Vacuum frequently on medium power.
Remove wet stains by carefully dabbing
with a lint-free cloth or sponge wrung in
warm detergent-free water. If the stain
remains, we recommend a chemical dry
cleaning product (for instance KR2) or
professional dry cleaning.

Colour fastness to light

Scale 1-5 or 1-8; 1 worst and 5 or 8 best
5-7 (8)

Pass for

Herman
Turn

More information [here](#).



CONFETTI BOUCLÉ

Composition

40% cotton, 22% acrylic, 16% viscose,
11% wool, 11% polyester

Fire rating

EN 1021 1/2: pass
CAL 117: pass
Crib 5: not pass

Martindale

100..000

Price group

4

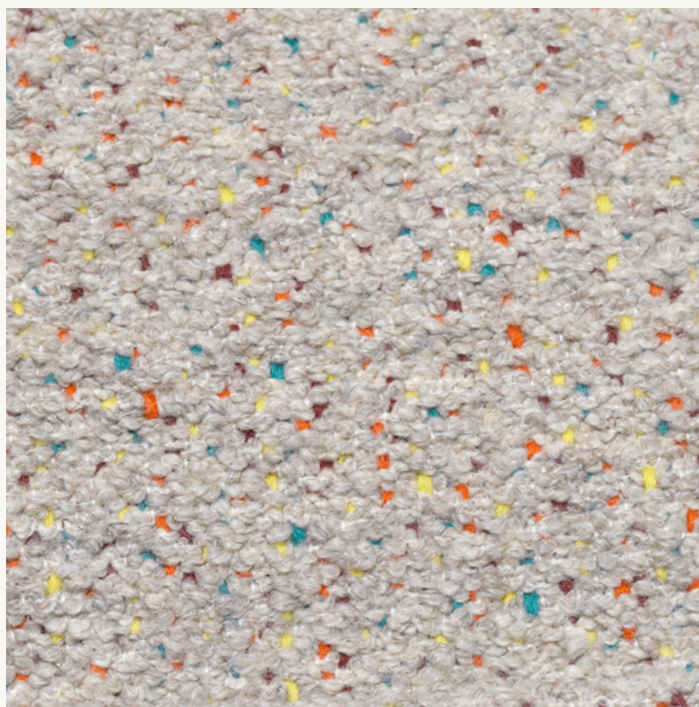
Care instructions

Vacuum frequently on medium power.
Remove wet stains by carefully dabbing
with a lint-free cloth or sponge wrung in
warm detergent-free water. If the stain
remains, we recommend a chemical dry
cleaning product (for instance KR2) or
professional dry cleaning.

Colour fastness to light Scale 5 (8)

Pass for

Catena
Rico



Light Grey

RICH LINEN

Composition

100% linen

Fire rating

EN 1021 1/2: not pass
Crib 5: not pass
CAL117: pass

Martindale

20.000

Price group

4

Care instructions

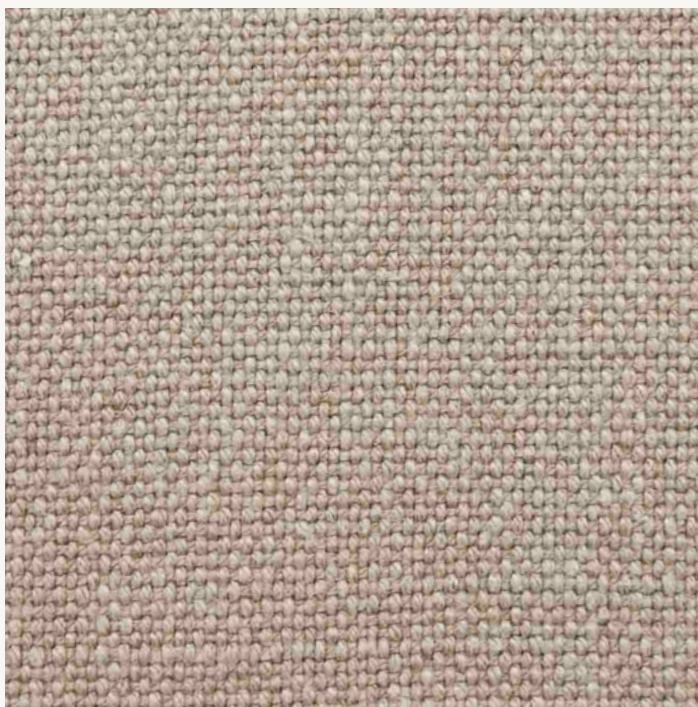
Vacuum frequently on medium power.
Remove wet stains by carefully dabbing with a lint-free cloth or sponge wrung in warm detergent-free water. If the stain remains, we recommend a chemical dry cleaning product (for instance KR2) or professional dry cleaning.

Colour fastness to light

Scale 1-5 or 1-8; 1 worst and 5 or 8 best
4 (5)

Pass for

Catena



Natural

WOOL BOUCLÉ

Composition

32% cotton, 61% wool and 7% nylon

Fire rating

EN 1021 1/2: pass
Crib 5: not pass
CAL117: pass

Martindale

25.000

Price group

4

Care instructions

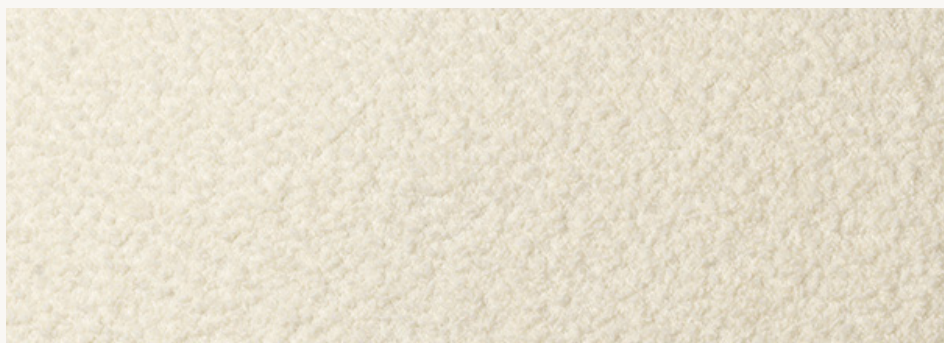
Dry clean only

Colour fastness to light

Scale 1-5 or 1-8; 1 worst and 5 or 8 best
4 (5)

Pass for

Catena
Rico



Off-white



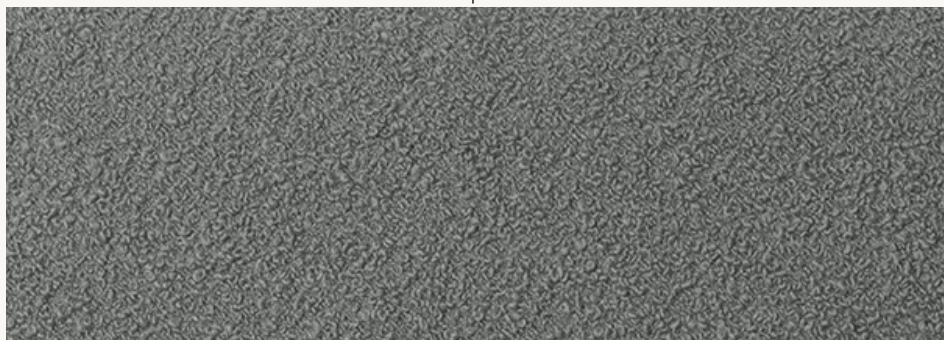
Natural



Sugar Kelp



Deep Blue



Grey

HALLINGDAL 65

By Kvadrat

Composition

70% new wool
30% viscose

Sustainability

EU Ecolabel
Greenguard Gold

Fire rating

EN 1021 1/2: pass
Crib 5: pass
CAL 117: pass

Martindale

100.000

Price group

5

Care instructions

Vacuum frequently on medium power.
Remove wet stains by carefully dabbing
with a lint-free cloth or sponge wrung in
warm detergent-free water. If the stain
remains, we recommend a chemical dry
cleaning product (for instance KR2) or
professional dry cleaning.

Colour fastness to light

Scale 1-5 or 1-8; 1 worst and 5 or 8 best
5-7 (8)

Pass for

Herman
Turn
Rico
Catena

More information [here](#).



FIORD 2

By Kvadrat

Composition

92% new wool
8% nylon

Sustainability

EU Ecolabel
Greenguard Gold

Fire rating

EN 1021 1/2: pass
Crib 5: pass with treatment
CAL 117: pass

Martindale

60.000

Price group

5

Care instructions

Vacuum frequently on medium power.
Remove wet stains by carefully dabbing
with a lint-free cloth or sponge wrung in
warm detergent-free water. If the stain
remains, we recommend a chemical dry
cleaning product (for instance KR2) or
professional dry cleaning.

Colour fastness to light

Scale 1-5 or 1-8; 1 worst and 5 or 8 best
6 (8)

Pass for

Herman
Turn

More information [here](#).



LEATHER - ENVY

By Sørensen Leather

Composition

100% aniline leather

Fire rating

EN 1021 1/2: pass
CAL117: pass
Crib 5: not pass

Price group

6

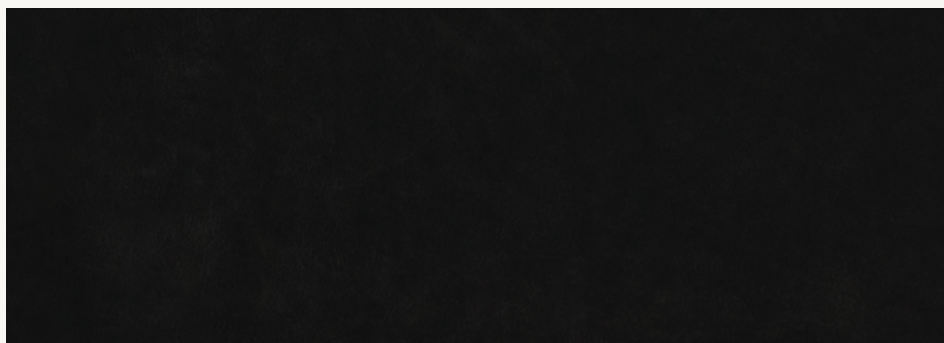
Care instructions

Vacuum frequently on medium power. Remove wet stains by carefully dabbing with a lint-free cloth or sponge wrung in warm detergent-free water. If the stain remains, we recommend a chemical dry cleaning product (for instance KR2) or professional dry cleaning.

Colour fastness to light Scale 3 (8)

Pass for
Herman

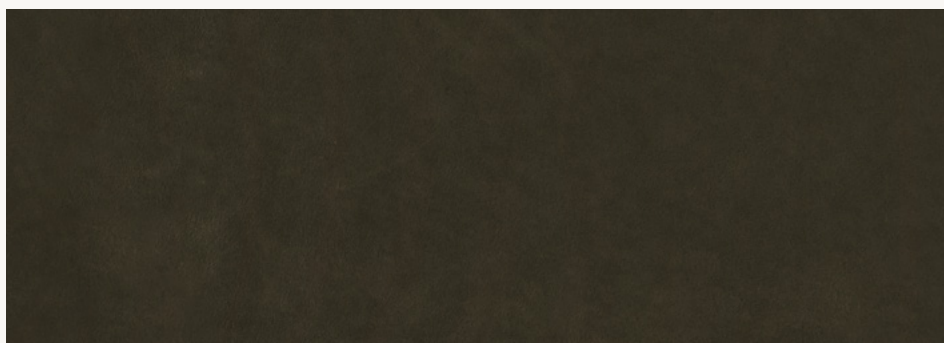
More information [here](#).



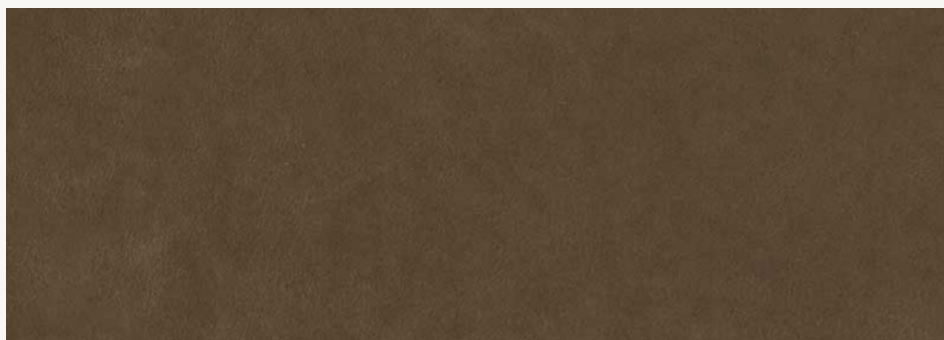
Black - 20321



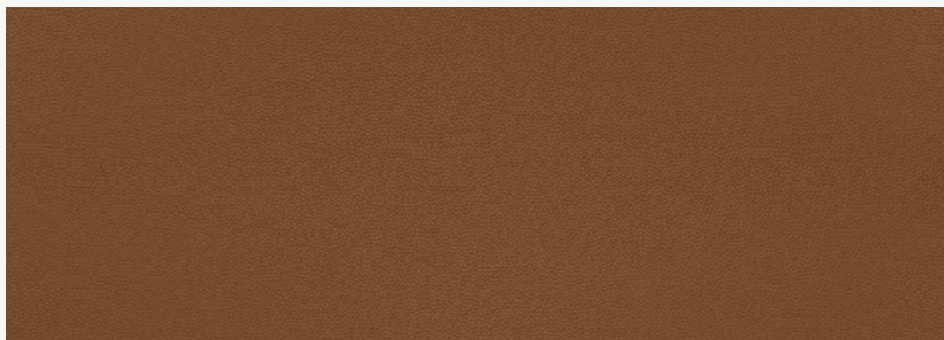
Anthrazite - 20323



Olive - 20324



Nougat - 20322



Cognac - 20320

For more information please contact your
firm LIVING sales contact

Space to feel comfortably you