

2024

# Fabric Overview

ferm  
LIVING

# Made To Order & Customisation Concept

The Customisation Concept serves as an overview of the various textiles and types of leather available for firm LIVING's upholstered furniture. The materials have been handpicked so you can make our furniture your own.

## ONE SIZE DOESN'T FIT ALL

Our homes are distinct, personal spaces that uniquely reflect the people who live there. They say the magic happens in the details, and often, that's what makes us fall in love with a specific piece that we want to move into our home. That is precisely why we have introduced the firm LIVING customisation concept, so that you can tailor selected pieces to fit your specific taste.

With our Made to Order products, you can choose between a wide variety of fabrics and leathers that we have selected among leading textile and leather suppliers, making it possible for you to customise your furniture with an array of materials and colour combinations.

## THE PERFECT FIT

The majority of our sofas and seating collection are included in the customisation concept. Among them are Catena, Rico, Turn, Dase, Buur and family of Herman Chairs.

For our sofas, you can choose between an exciting variety of textiles that range from faded velvet, cottons, linens and wool, available in an array of colours and patterns from premium fabric suppliers that include Kvadrat, Sørensen Leather and Gabriel.

For our Herman Chairs, there are a wide range of options available: customise everything from the frame to the colour of wooden backrest, and choose between various seat fabrics, woods and leathers to form your ideal chair.

To see a complete selection of our Made to Order materials, please refer to the Customisation Concept section of our Product Overview, where you can get an overview of all of the different customisation options that we offer.

We are also happy to upholster furniture using non-standard fabric options and customer's own materials (COM) upon fabric approval. For further information please contact our Sales Representatives.



# FABRIC & LEATHER OPTIONS

	CATENA COLLECTION	RICO COLLECTION	HERMAN COLLECTION	TURN COLLECTION	DASE COLLECTION	BUUR COLLECTION
<i>Price Group 1</i>						
Cotton Linen	•			•	•	
Brushed		•				
Soft Bouclé	•	•	•		•	•
<i>Price Group 2</i>						
Faded Velvet		•				
Grain	•	•	•		•	
Hot Madison	•			•	•	
Rich Velvet		•			•	•
<i>Price Group 3</i>						
Bouclé	•	•	•	•	•	•
Check	•					
Louisiana	•	•				•
Nordic Bouclé	•	•			•	•
Pasadena	•			•		
<i>Price Group 4</i>						
Confetti Bouclé	•	•			•	
Leather - Ultra			•			
Rich Linen	•					
Tonus 4		•	•	•	•	•
Wool Bouclé	•	•				
<i>Price Group 5</i>						
Hallingdal 65	•	•	•	•	•	
Leather - Envy			•			
Patchwork	•					

# COTTON LINEN

## Composition

60% cotton  
40% linen

---

## Fire rating

CAL117: pass  
EN 1021 1/2: not pass  
BS 5852 0,1 C&M: pass with a  
Crib5 interliner - on request  
BS 5852 Crib5: not pass

---

## Martindale

24.000

---

## Price group

1

---

## Care instructions

Vacuum frequently on medium power.  
Remove wet stains by carefully dabbing with  
a lint-free cloth or sponge wrung in warm  
detergent-free water. If the stain remains,  
we recommend professional dry cleaning.

---

## Colour fastness to light

Scale 1-5 or 1-8; 1 worst and 5 or 8 best  
4 (8)

---

## Pass for

Catena  
Dase  
Turn



Natural



# BRUSHED

## Composition

100% polyester

---

## Fire rating

CAL117: pass  
EN 1021 1/2: not pass  
BS 5852 0,1 C&M: not pass - See alternative  
UK only option under Fabric Overview  
UK / Soft FR.  
BS 5852 Crib5: not pass

---

## Martindale

90.000

---

## Price group

1

---

## Care instructions

Vacuum frequently on medium power.  
Remove wet stains by carefully dabbing with a lint-free cloth or sponge wrung in warm detergent-free water. If the stain remains, we recommend professional dry cleaning.

---

## Colour fastness to light

Scale 1-5 or 1-8; 1 worst and 5 or 8 best  
5 (5)

---

## Pass for

Rico



Off-White



Sand



Warm Grey



# SOFT BOUCLÉ

## Composition

90% polyester  
5% cotton  
5% polyacrylic

---

## Fire rating

CAL117: pass  
EN 1021 1/2: not tested  
BS 5852 0,1 C&M: pass with treatment  
Crib5: not pass

---

## Martindale

75.000

---

## Price group

1

---

## Care instructions

Vacuum frequently on medium power.  
Remove wet stains by carefully dabbing with a lint-free cloth or sponge wrung in warm detergent-free water. If the stain remains, we recommend professional dry cleaning.

---

## Colour fastness to light

Scale 1-5 or 1-8; 1 worst and 5 or 8 best  
5 (5)

---

## Pass for

Buur  
Catena  
Dase  
Herman  
Rico



Off-White/Sand



Natural



Dark Brown

# FADED VELVET

## Composition

51% acrylic  
40% polyester  
9% viscose

## Fire rating

CAL117: pass  
EN 1021 1/2: not pass  
BS 5852 0,1 C&M: not pass  
BS 5852 Crib5: not pass

## Martindale

60.000

## Price group

2

## Care instructions

Vacuum frequently on medium power.  
Remove wet stains by carefully dabbing with a lint-free cloth or sponge wrung in warm detergent-free water.

## Colour fastness to light

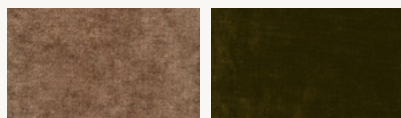
Scale 1-5 or 1-8; 1 worst and 5 or 8 best  
5 (8)

## Pass for

Rico

More information [here](#).

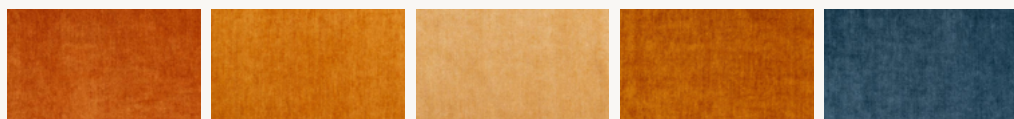
## ferm LIVING colour selection (fabric swatches available)



26 Beige 9133

3 Forest 16Y8

## All available colours



Trend 42K4 Terry pot

Trend 05C6 Persimon

Trend 4203 Camel

Trend 05EP Saffron

Trend G701 Diesel blue



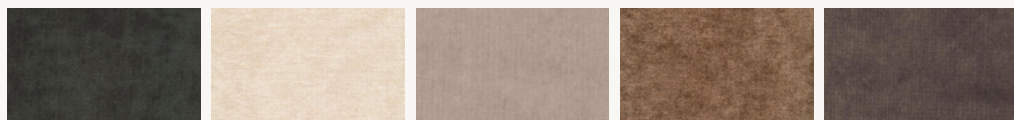
Trend 16CY Blade

Trend 1712 Cumin

Trend 1388 Deep brick

Trend 61/20BKQ - Soft rose

Trend 2450 Solid - Bottle Green



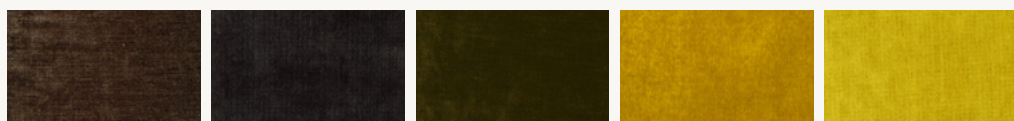
7 graphite

56 Natural A6A1

16 sand

26 Beige 9133

36 light brown



46 Mid brown 81J5

6 mocca

3 Forest 16Y8

15 Lion 38BNBK

23 olive



5 Gold 05J2

31 orange

41 Rouge 13K9

1 wine

21 cerise



81 Pastell pink 10E5BK

11 lipstick

51 Aubergine 6115

91 Pastell violet 1041BK

71 violet



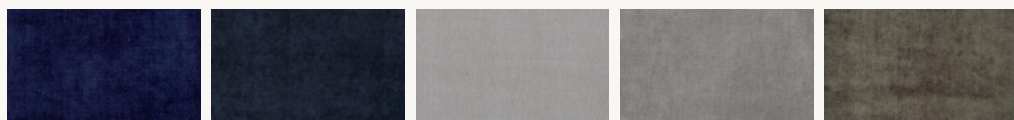
83 Pastell green 1006BK

32 Petrol 3004

22 turquoise

52 Lagoon G7F7BK

12 Denim 30M7



2 midnight

42 Ocean 0232BK

27 Soft silver A629BK

17 concrete

47 Fog 84B8



37 Antracit G2V3BK

4 black



# GRAIN

By Gabriel

## Composition

2287 (unicolor): 92% post-consumer recycled polyester / 8% polyester  
2288 (melange): 80% post-consumer recycled polyester / 20% polyester

## Sustainability

STANDARD 100 by OEKO-TEX®

## Fire rating

CAL117: pass  
EN 1021 1/2: pass  
BS 5852 0,1 C&M: not pass  
BS 5852 Crib5: not pass

## Martindale

100.000

## Price group

2

## Care instructions

Vacuum frequently on medium power.  
Remove wet stains by carefully dabbing with a lint-free cloth or sponge wrung in warm detergent-free water. If the stain remains, we recommend professional dry cleaning.

## Colour fastness to light

Scale 1-5 or 1-8; 1 worst and 5 or 8 best  
5-7 (8)

## Pass for

Catena  
Dase  
Herman  
Rico

More information [here](#).

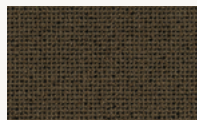
## firm LIVING colour selection (fabric swatches available)



Cashmere 61252



Caramel 61037

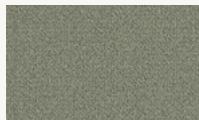


Chocolate 61249

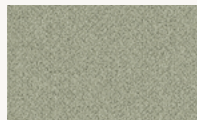
## All available colours



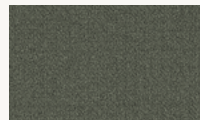
60300



60301



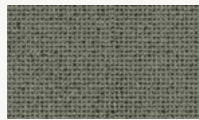
60302



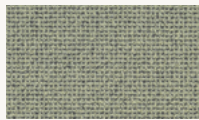
60303



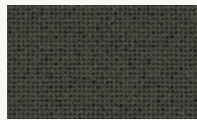
60320



60321



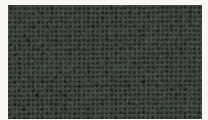
60322



60323



60324



60325



60328



60999



61037



61146



61229



61230



61247



61248



61249



61250



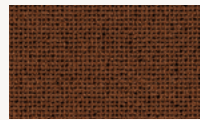
61251



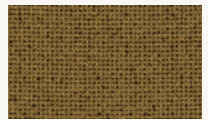
61252



61253



61254



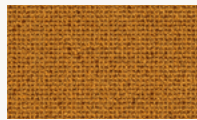
61255



61256



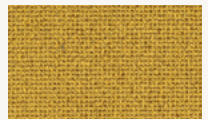
62016



62121



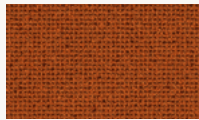
62122



62123



63117



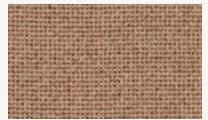
63118



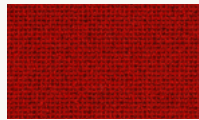
64041



64249



64250



64251



66216



66231



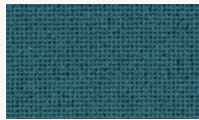
66232



66233



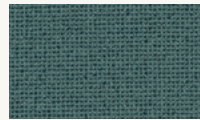
66234



66235



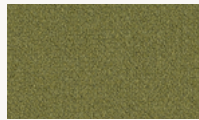
66236



66237



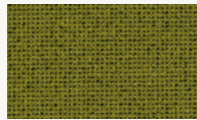
68155



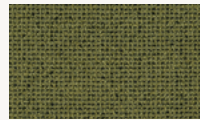
68243



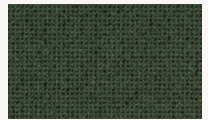
68257



68258



68259



68260

# HOT MADISON

## By Jab

### Composition

63% cotton  
37% linen

### Fire rating

CAL117: pass  
EN 1021 1/2: not pass  
BS 5852 0,1 C&M: not pass - See alternative  
UK only option under Fabric Overview  
UK / Linara FR.  
BS 5852 Crib5: not pass

### Martindale

55.000

### Price group

2

### Care instructions

Vacuum frequently on medium power.  
Remove wet stains by carefully dabbing with a lint-free cloth or sponge wrung in warm detergent-free water. If the stain remains, we recommend professional dry cleaning.

### Colour fastness to light

Scale 1-5 or 1-8; 1 worst and 5 or 8 best  
4-5 (8)

### Pass for

Catena  
Dase  
Turn

More information [here](#):

### ferm LIVING colour selection (fabric swatches available)



Sand 695

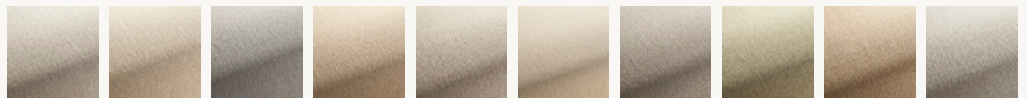
Smoked Chocolate 127

Sugar Kelp 988

### All available colours



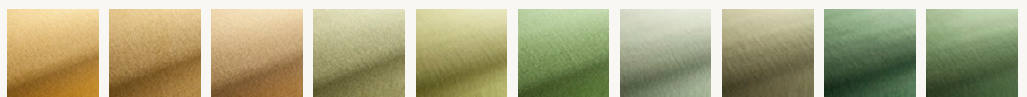
CH1249/420 CH1249/172 CH1249/071 CH1249/694 CH1249/070 CH1249/077 CH1249/192 CH1249/195 CH1249/170 CH1249/410



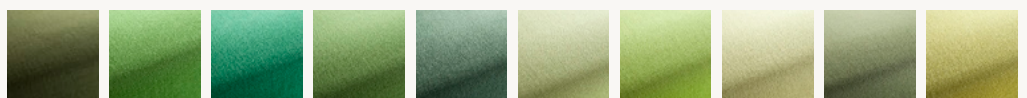
CH1249/419 CH1249/076 CH1249/171 CH1249/476 CH1249/073 CH1249/131 CH1249/072 CH1249/987 CH1249/078 CH1249/095



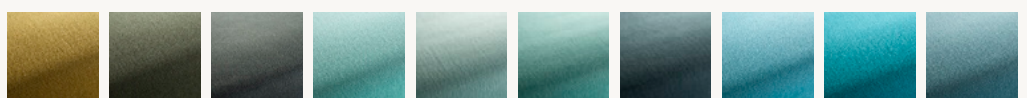
CH1249/074 CH1249/695 CH1249/075 CH1249/094 CH1249/709 CH1249/708 CH1249/710 CH1249/046 CH1249/509 CH1249/045



CH1249/897 CH1249/404 CH1249/989 CH1249/711 CH1249/230 CH1249/712 CH1249/089 CH1249/233 CH1249/232 CH1249/231



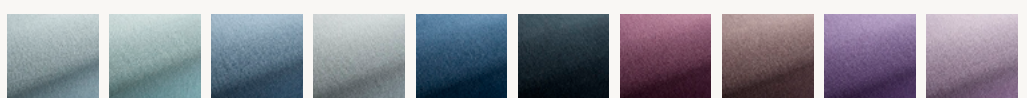
CH1249/234 CH1249/139 CH1249/134 CH1249/038 CH1249/133 CH1249/043 CH1249/037 CH1249/707 CH1249/039 CH1249/130



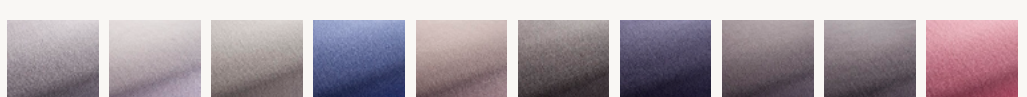
CH1249/528 CH1249/135 CH1249/096 CH1249/088 CH1249/180 CH1249/181 CH1249/182 CH1249/183 CH1249/184 CH1249/719



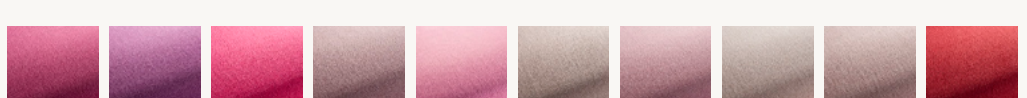
CH1249/248 CH1249/717 CH1249/722 CH1249/718 CH1249/083 CH1249/185 CH1249/471 CH1249/155 CH1249/721 CH1249/052



CH1249/469 CH1249/050 CH1249/720 CH1249/053 CH1249/499 CH1249/424 CH1249/524 CH1249/992 CH1249/081 CH1249/080



CH1249/991 CH1249/084 CH1249/696 CH1249/186 CH1249/085 CH1249/725 CH1249/082 CH1249/086 CH1249/087 CH1249/062



CH1249/699 CH1249/700 CH1249/063 CH1249/698 CH1249/064 CH1249/990 CH1249/894 CH1249/055 CH1249/697 CH1249/704





# HOT MADISON

## By Jab

### Composition

63% cotton  
37% linen

### Fire rating

CAL117: pass  
EN 1021 1/2: not pass  
BS 5852 0,1 C&M: not pass - See alternative  
UK only option under Fabric Overview  
UK / Linara FR.  
BS 5852 Crib5: not pass

### Martindale

55.000

### Price group

2

### Care instructions

Vacuum frequently on medium power.  
Remove wet stains by carefully dabbing with a lint-free cloth or sponge wrung in warm detergent-free water. If the stain remains, we recommend professional dry cleaning.

### Colour fastness to light

Scale 1-5 or 1-8; 1 worst and 5 or 8 best  
4-5 (8)

### Pass for

Catena  
Dase  
Turn



More information [here](#).



# RICH VELVET

## Composition

100% polyester

## Fire rating

CAL117: pass  
EN 1021 1/2: pass  
BS 5852 0,1 C&M: pass  
BS 5852 Crib5: not pass

## Martindale

170.000

## Price group

2

## Care instructions

Vacuum frequently on medium power.  
Remove wet stains by carefully dabbing with a lint-free cloth or sponge wrung in warm detergent-free water.

## Colour fastness to light

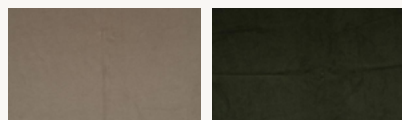
Scale 1-5 or 1-8; 1 worst and 5 or 8 best  
6 (8)

## Pass for

Buur  
Dase  
Rico

[More information here.](#)

## ferm LIVING colour selection (fabric swatches available)



26 Beige 32

104 Pine

## All available colours



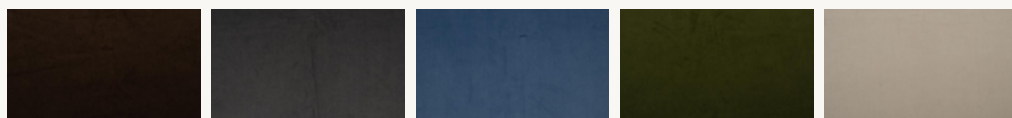
1 Red 16

2 Navy 23

3 Green 11

4 Black 41

5 Yellow 47



6 Brown 5

7 Grey 20

12 Denim 38

13 Moss green 68

16 Sand 31



17 Warm grey 4

21 Rust 67

22 Petrol 26

23 Mint 12

26 Beige 32



27 Silver 40

31 Orange 52

32 Diesel 69

33 Lagoon 27

36 Soft brown 55



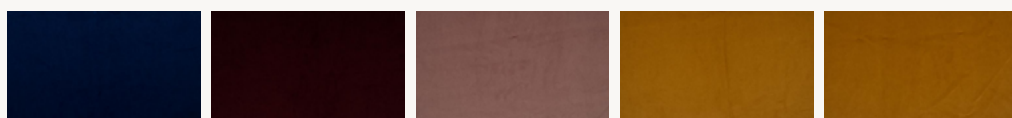
37 Concrete 51

42 Royal blue 28

43 Deep green 37

46 Coffee 54

47 Dark grey 21



52 Racing blue 60

61 Bordeaux 65

81 Pastel pink 34

79 Honey

90 Gold



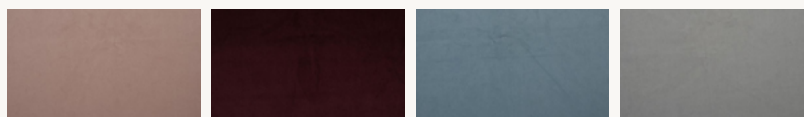
53 Terra

104 Pine

73 Bonzai

70 Bottle green

30 Bone



75 Orchid

123 Plum

110 Sky

108 Platinum

# BOUCLÉ

## Composition

35% acrylic  
24% polyester  
19% viscose  
14% cotton  
5% linen  
3% other fibres

---

## Fire rating

CAL117: pass  
EN 1021 1/2: pass  
BS 5852 0,1 C&M: pass  
BS 5852 Crib5: not pass

---

## Martindale

30.000

---

## Price group

3

---

## Care instructions

Vacuum frequently on medium power.  
Remove wet stains by carefully dabbing with a lint-free cloth or sponge wrung in warm detergent-free water. If the stain remains, we recommend professional dry cleaning.

---

## Colour fastness to light

Scale 1-5 or 1-8; 1 worst and 5 or 8 best  
4-5 (8)

---

## Pass for

Buur  
Catena  
Dase  
Herman  
Rico  
Turn



Off-White



Sand

# CHECK

## Composition

30% wool, 20% acrylic, 15% cotton, 15% polyester, 10% linen, 10% viscose

---

## Fire rating

CAL117: pass  
EN 1021 1/2: pass  
BS 5852 0,1 C&M: pass  
BS 5852 Crib5: not pass

---

## Martindale

28.000

---

## Price group

3

---

## Care instructions

Vacuum frequently on medium power.  
Remove wet stains by carefully dabbing with a lint-free cloth or sponge wrung in warm detergent-free water. If the stain remains, we recommend professional dry cleaning.

---

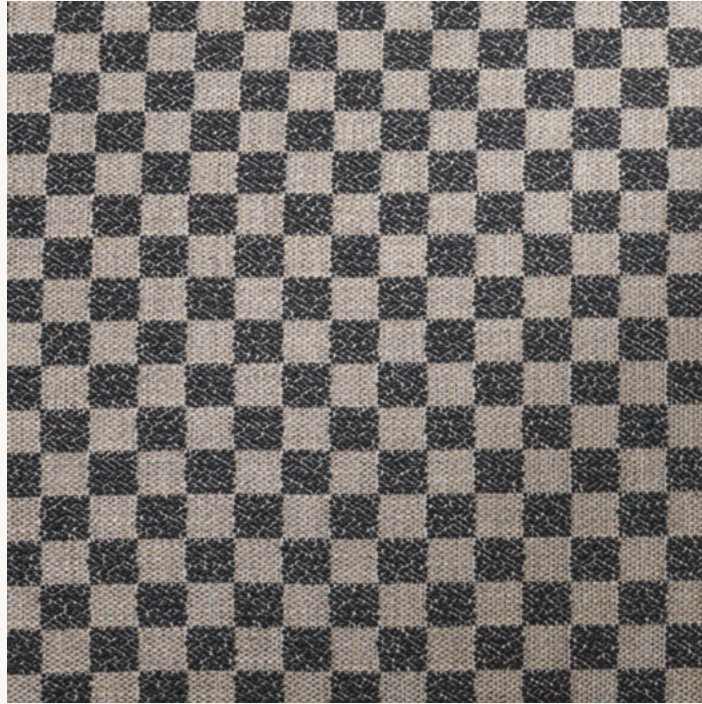
## Colour fastness to light

Scale 1-5 or 1-8; 1 worst and 5 or 8 best  
4-5 (8)

---

## Pass for

Catena



Sand/Black



# LOUISIANA

## Composition

20% wool  
20% viscose  
15% linen  
15% cotton  
15% polyester  
15% acrylic

---

## Fire rating

CAL117: pass  
EN 1021 1/2: pass with treatment  
BS 5852 0.1 C&M: pass with treatment  
BS 5852 Crib5: not pass

---

## Martindale

30.000

---

## Price group

3

---

## Care instructions

Vacuum frequently on medium power. Remove wet stains by carefully dabbing with a lint-free cloth or sponge wrung in warm detergent-free water. If the stain remains, we recommend professional dry cleaning.

---

## Colour fastness to light

Scale 1-5 or 1-8; 1 worst and 5 or 8 best  
5 (8)

---

## Pass for

Catena  
Buur  
Rico (not available for Rico Sofa Curve)



Sand/Black

# NORDIC BOUCLÉ

## Composition

30% wool  
30% cotton  
30% acrylic  
5% polyester  
5% other fibers

---

## Fire rating

CAL117: pass  
EN 1021 1/2: not tested  
BS 5852 0,1 C&M: pass with treatment  
Crib5: not pass

---

## Martindale

25.000

---

## Price group

3

---

## Care instructions

Remove wet stains by carefully dabbing with a lint-free cloth or sponge wrung in warm detergent-free water. If the stain remains, we recommend professional dry cleaning.

---

## Colour fastness to light

Scale 1-5 or 1-8; 1 worst and 5 or 8 best  
4 (8)

---

## Pass for

Buur  
Catena  
Dase  
Rico



Off-white

# PASADENA

## Composition

34% linen  
27% viscose  
17% polyester  
12% cotton  
8% wool  
2% acrylic

---

## Fire rating

CAL117: pass  
EN 1021 1/2: pass with treatment  
BS 5852 0,1 C&M: pass with treatment  
BS 5852 Crib5: not pass

---

## Martindale

30.000

---

## Price group

3

---

## Care instructions

Vacuum frequently on medium power.  
Remove wet stains by carefully dabbing with a lint-free cloth or sponge wrung in warm detergent-free water. If the stain remains, we recommend professional dry cleaning.

---

## Colour fastness to light

Scale 1-5 or 1-8; 1 worst and 5 or 8 best  
5 (8)

---

## Pass for

Catena  
Turn



Sand/Black



# CONFETTI BOUCLÉ

## Composition

40% cotton, 22% acrylic, 16% viscose,  
11% wool, 11% polyester

---

## Fire rating

CAL117: pass  
EN 1021 1/2: pass  
BS 5852 0,1 C&M: pass  
BS 5852 Crib5: not pass

---

## Martindale

100.000

---

## Price group

4

---

## Care instructions

Vacuum frequently on medium power.  
Remove wet stains by carefully dabbing with  
a lint-free cloth or sponge wrung in warm  
detergent-free water. If the stain remains,  
we recommend professional dry cleaning.

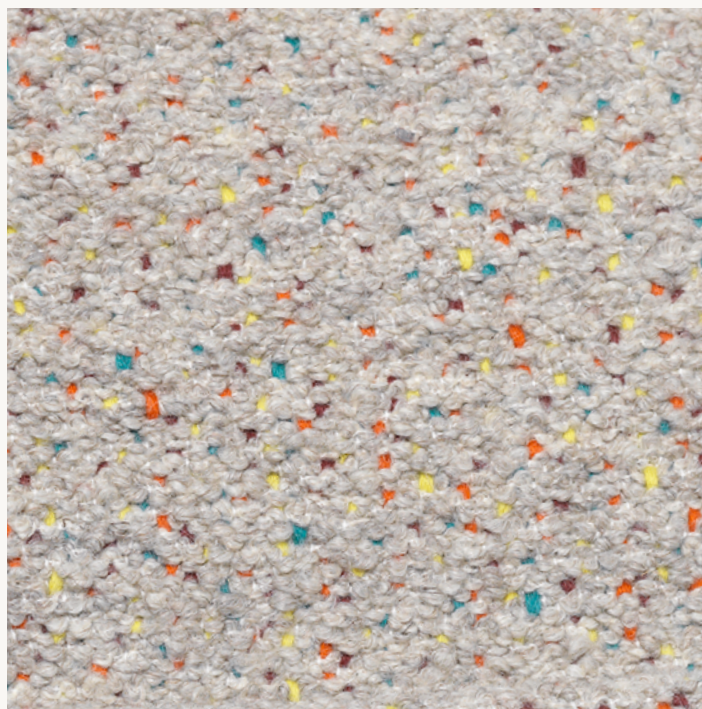
---

## Colour fastness to light Scale 5 (8)

---

## Pass for

Catena  
Dase  
Rico



Light Grey

# ULTRA LEATHER

By Sørensen Leather

## Composition

100% protected leather

## Fire rating

CAL117: pass  
EN 1021 1/2: pass  
BS 5852 0,1 C&M: pass  
BS 5852 Crib5: pass with treatment

## Price group

4

## Care instructions

Vacuum frequently with a soft brush. For stains use boiled water with natural soap. Whip 2-3 tablespoons of soap flakes in 1 litre water and only use the foam. Apply the foam with a soft cloth, let it dry and wipe off the leather thoroughly with a soft cotton cloth.

## Colour fastness to light

Scale 5-7 (8)

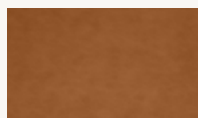
≥ 5 (8)

## Pass for

Herman

More information [here](#).

## ferm LIVING colour selection (fabric swatches available)



Brandy - 41574



Safari - 41586



Black - 41599

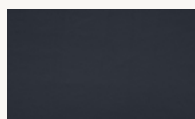
## All available colours



Black - 41599



Black Brown - 41590



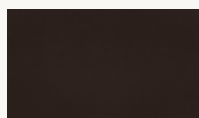
Navy - 41573



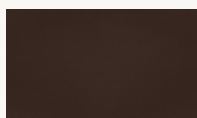
Anthrazite - 41580



Lava - 41575



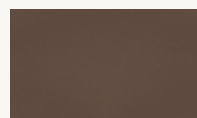
Chocolate - 41589



Brown - 41588



Grey - 41585



Safari - 41586



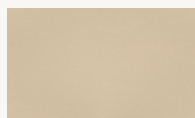
Earth - 41584



Altweiss - 41576



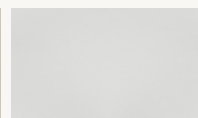
Marble - 41583



Sand - 41582



Eggshell - 41581



White - 41594



Purple - 41593



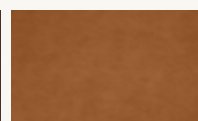
Brick - 41579



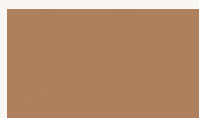
Poppy - 41578



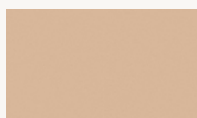
Cognac - 41598



Brandy - 41574



Camel - 41571



Honey - 41572



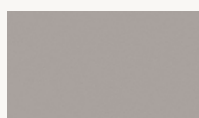
Leaf - 41566



Marsh - 41570



Moss - 41569



Oat - 41568



Smoke - 41567



# RICH LINEN

## Composition

100% linen

---

## Fire rating

CAL117: pass  
EN 1021 1/2: not pass  
BS 5852 0,1 C&M: not pass - See  
alternative UK only option under Fabric  
Overview UK / Classic Linen.  
BS 5852 Crib5: not pass

---

## Martindale

20.000

---

## Price group

4

---

## Care instructions

Vacuum frequently on medium power.  
Remove wet stains by carefully dabbing with  
a lint-free cloth or sponge wrung in warm  
detergent-free water. If the stain remains,  
we recommend professional dry cleaning.

---

## Colour fastness to light

Scale 1-5 or 1-8; 1 worst and 5 or 8 best  
4 (5)

---

## Pass for

Catena



Natural

# TONUS 4

By Kvadrat

**Composition**  
90% new wool  
10% helanca

**Sustainability**  
EU Ecolabel  
Greenguard Gold

**Fire rating**  
CAL117: pass  
EN 1021 1/2: pass  
BS 5852 0,1 C&M: pass  
BS 5852 Crib5: pass with treatment

**Martindale**  
100.000

**Price group**  
4

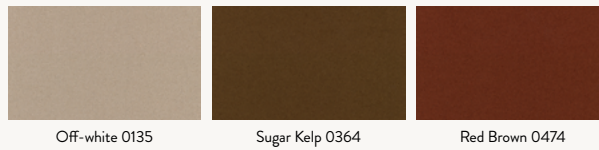
**Care instructions**  
Vacuum frequently on medium power.  
Remove wet stains by carefully dabbing with a lint-free cloth or sponge wrung in warm detergent-free water. If the stain remains, we recommend professional dry cleaning.

**Colour fastness to light**  
Scale 1-5 or 1-8; 1 worst and 5 or 8 best  
5-7 (8)

**Pass for**  
Buur  
Dase  
Herman  
Rico  
Turn

More information [here](#).

## ferm LIVING colour selection (fabric swatches available)



## All available colours





# WOOL BOUCLÉ

## Composition

32% cotton, 61% wool and 7% nylon

---

## Fire rating

CAL117: pass  
EN 1021 1/2: pass  
BS 5852 0,1 C&M: pass  
BS 5852 Crib5: not pass

---

## Martindale

25.000

---

## Price group

4

---

## Care instructions

Vacuum frequently on medium power.  
Remove wet stains by carefully dabbing with a lint-free cloth or sponge wrung in warm detergent-free water. If the stain remains, we recommend professional dry cleaning.

---

## Colour fastness to light

Scale 1-5 or 1-8; 1 worst and 5 or 8 best  
4 (5)

---

## Pass for

Catena  
Rico



Off-white



Natural



Sugar Kelp

# HALLINGDAL 65

By Kvadrat

## Composition

70% new wool  
30% viscose

## Sustainability

EU Ecolabel  
Greenguard Gold

## Fire rating

CAL117: pass  
EN 1021 1/2: pass  
BS 5852 0,1 C&M: pass  
BS 5852 Crib5: pass

## Martindale

100.000

## Price group

5

## Care instructions

Vacuum frequently on medium power.  
Remove wet stains by carefully dabbing with a lint-free cloth or sponge wrung in warm detergent-free water. If the stain remains, we recommend professional dry cleaning.

## Colour fastness to light

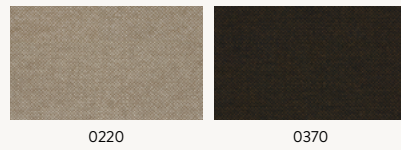
Scale 1-5 or 1-8; 1 worst and 5 or 8 best  
5-7 (8)

## Pass for

Catena  
Dase  
Herman  
Rico  
Turn

[More information here.](#)

## ferm LIVING colour selection (fabric swatches available)



## All available colours





# LEATHER - ENVY

By Sørensen Leather

## Composition

100% aniline leather

## Fire rating

CAL117: pass  
EN 1021 1/2: pass  
BS 5852 0,1 C&M: not tested  
BS 5852 Crib5: not pass

## Price group

5

## Care instructions

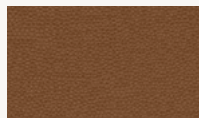
Vacuum frequently with a soft brush. For stains use boiled water with natural soap. Whip 2-3 tablespoons of soap flakes in 1 litre water and only use the foam. Apply the foam with a soft cloth, let it dry and wipe off the leather thoroughly with a soft cotton cloth.

## Colour fastness to light Scale 3 (8)

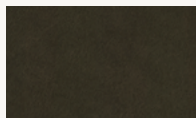
Pass for  
Herman

More information [here](#).

## ferm LIVING colour selection (fabric swatches available)



Olive - 20324

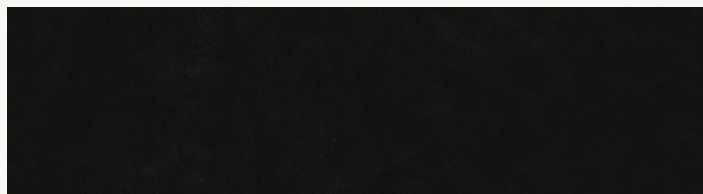


Cognac - 20320

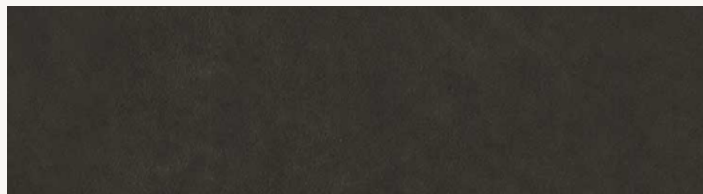


Black - 20321

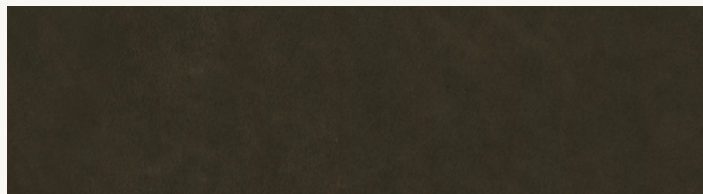
## All available colours



Black - 20321



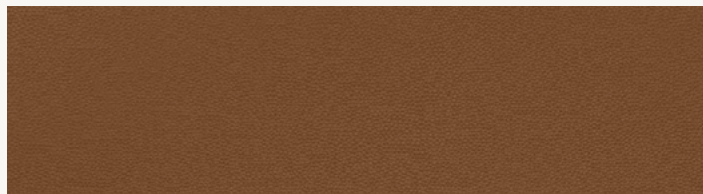
Anthrazite - 20323



Olive - 20324



Nougat - 20322



Cognac - 20320

# PATCHWORK

## Composition

Patchwork with mixed fabrics including:  
Classic Linen: 100% linen  
Rich Linen: 100% linen  
Bouclé: 35% acrylic, 24% polyester,  
19% viscose, 14% cotton, 5% linen,  
3% other fibres  
Re-Cotton: 85% recycled cotton,  
10% recycled polyester, 5% other fibers  
Hot Madison: 63% cotton, 37% linen.

---

## Fire rating

CAL117: not pass  
EN 1021 1/2: not pass  
BS 5852 0,1 C&M: not pass  
BS 5852 Crib5: not pass

---

## Martindale

Classic Linen: 25,000  
Rich Linen: >20,000  
Bouclé: 30,000  
Re-Cotton: >30,000  
Hot Madison: 55,000

---

## Price group

5

---

## Care instructions

Vacuum frequently on medium power.  
Remove wet stains by carefully dabbing with  
a lint-free cloth or sponge wrung in warm  
detergent-free water. If the stain remains,  
we recommend professional dry cleaning.

---

## Colour fastness to light

**Scale 1-5 or 1-8; 1 worst and 5 or 8 best**

Classic Linen: 4 (5)  
Rich Linen: 4 (5)  
Bouclé: 4-5 (8)  
Re-Cotton: ≥4 (5)  
Hot Madison: 4-5 (8)

---

## Pass for

Catena (Large size ONLY)



Patchwork



For more information please contact your  
firm LIVING sales contact

**Space to feel comfortably you**