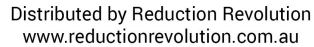
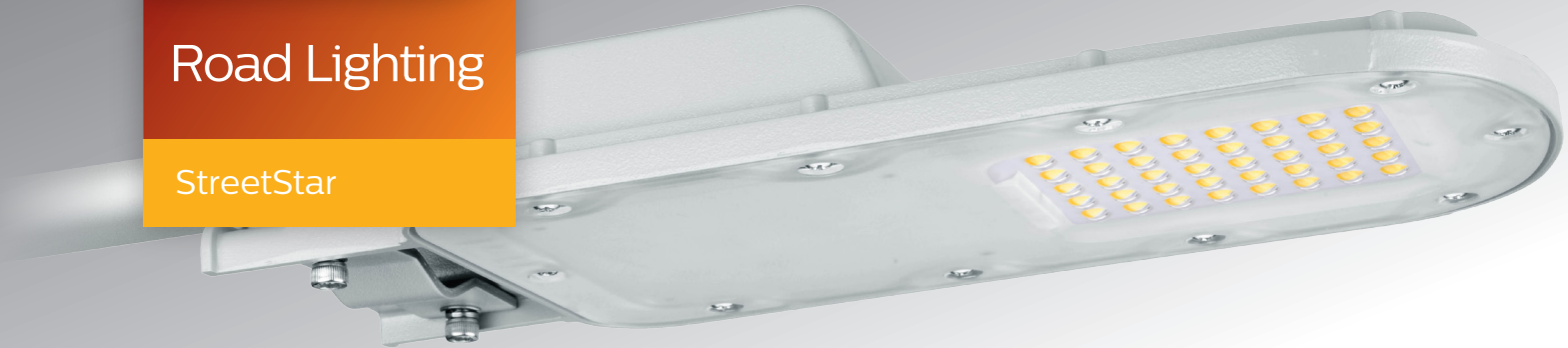


The Philips logo is displayed in blue, bold, sans-serif capital letters.The text "Road Lighting" is written in white, sans-serif font on an orange background.The text "StreetStar" is written in white, sans-serif font on a yellow background.The logo for Reduction Revolution, with "REDUCTION" in large blue letters and "REVOLUTION" in smaller blue letters below it.Text indicating distribution by Reduction Revolution and the website address: "Distributed by Reduction Revolution www.reductionrevolution.com.au".

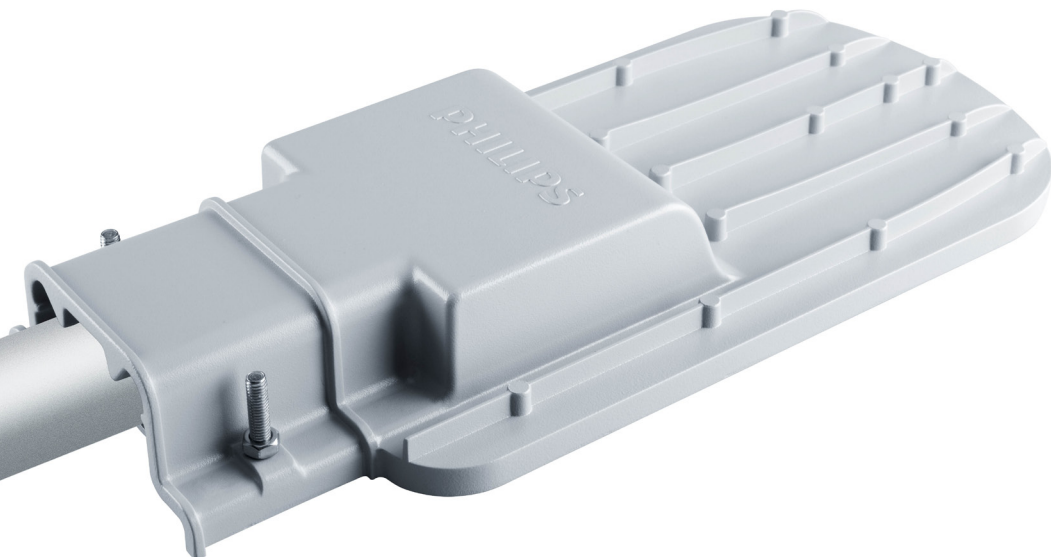
Your streets. Your star.

StreetStar

The Philips StreetStar LED luminaire brings visually arresting brilliance and safety to local road and residential lighting projects. An optimized, long-lasting, and reliable solution that meets maximized operations and maintenance savings, this luminaire is the perfect synergy of performance, features, and value that will light up your way.

StreetStar is designed to perfectly fit one-to-one retrofit projects while catering to all lighting requirements. It provides crisp, brilliant light that surpasses existing HID and fluorescent luminaire performance while offering a long lifespan of up to 50,000 hours. Backed by the Philips reliability promise, StreetStar ensures mechanical strength and excellent thermal performance, providing continuous operation and unparalleled safety and protection.

StreetStar is the perfect cost-effective solution for any city, municipality, and utility lighting projects that need optimum quality, performance, and low maintenance.



Benefits

- **Optimal light quality.** Lighting consistency that outperforms current HID and fluorescent luminaire.
- **Reliable performance.** Backed by Philips quality standards to ensure durability and functionality.
- **Meets standard lighting specifications.** Competitive option for low lumen package street lighting that meets all IEC 60598 requirements.
- **Easy to install.** Compact design for quick and easy point-to-point replacement of fluorescent and HID street lights.
- **Long lasting, low maintenance, and cost-effective.** Low-power LED lighting with long lifespan to provide significant cost savings.

Features

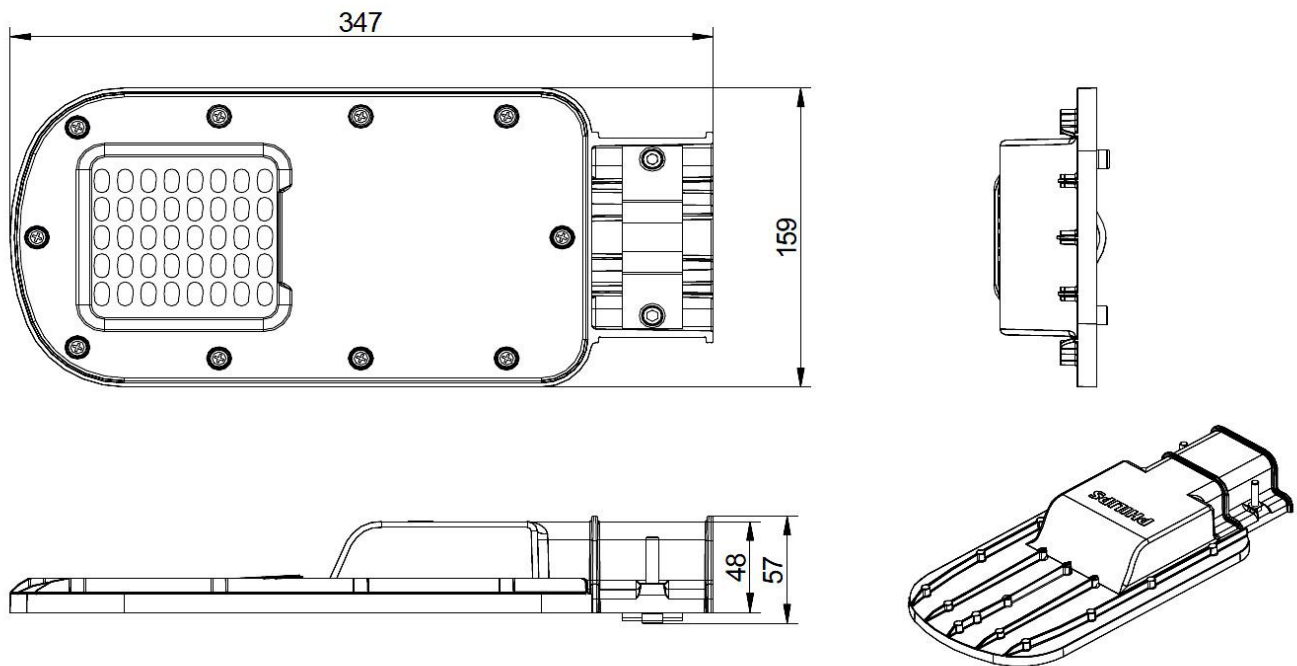
- 2,400 to 3,600 lumen package (5700K and 4000K) with DW3 wide beam optics for crisp, brilliant light
- High-pressure die-cast housing to ensure mechanical strength and good thermal performance
- Rated for IP66 and IK08 protection to ensure continuous operation
- Pre-wired power cable and assembly of input connector for easy and safe installation
- High-quality components that are IEC 60598-certified for higher ambient temperature
- Operating lifespan of 50,000 hours for components and driver
- Available in AC and DC (Solar version)

Applications

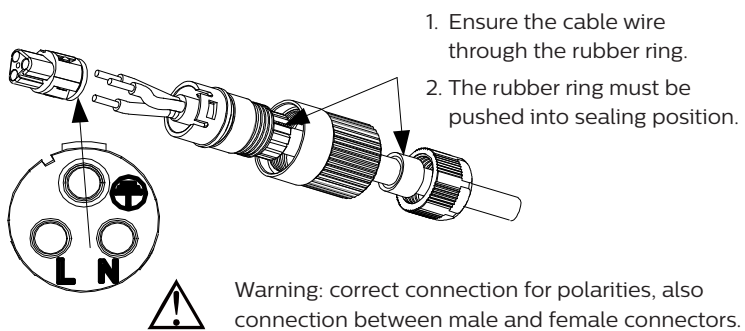
- Local and rural roads
- City streets
- Residential streets
- Bridges and overpasses

Dimensions

Units in mm

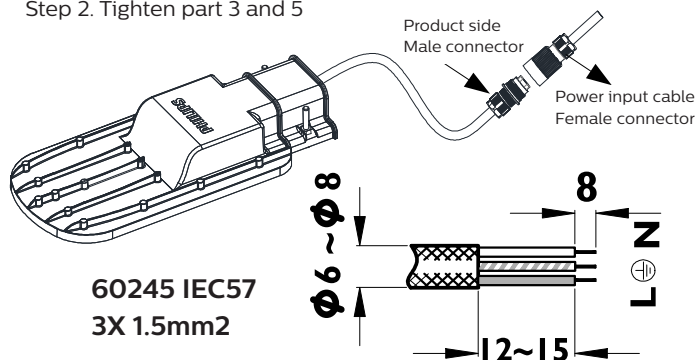


Male and female connector



Step 1. Fix male and female connector

Step 2. Tighten part 3 and 5



Product data

General Characteristics

Model	StreetStar – BRP210
Lifetime	Ta=35°C; 50K hours; 70% lumen maintenance

Light Technical Characteristics

CCT	3000K/4000K/57000K
CRI(typical)	75±5
Lumen Output	4000K – Max 3,600lm 3000K – Max 3,100lm
System efficacy	AC: 130lm/w (4000K); 115lm/w (3000K); DC: 130lm/w (4000K)

Electrical Characteristics

Input Voltage	220-240V, 50-60Hz AC ; 12V DC
Operational voltage Range (AC driver)	170-250V (50/60Hz)
Power Factor	95%

Environmental Characteristics

IP protection	IP66 (without glue)
IK protection	IK08
Installation	Side entry; pole diameter 42-60mm Power input cable (0.5m) and connector (IP66) assembly included
Operating temp	-40°C < Ta < 55°C
Wind speed	Wind Force 83.5N
Humidity	Operation humidity: 93%

Mechanical

Housing	High pressure die-cast aluminium
Lens	Multilayer DW3 optic (IP66 integrated lens)

Product Data

Weight	1.1 Kg
Dimension	347 x 159 x 57 mm
Surge protection	10KV (AC version)
Ordering information	BRP210 LED24/CW 18W 220-240V DW3 MP1 BRP210 LED29/CW 22W 220-240V DW3 MP1 BRP210 LED36/CW 27W 220-240V DW3 MP1 BRP210 LED24/NW 18W 220-240V DW3 MP1 BRP210 LED29/NW 22W 220-240V DW3 MP1 BRP210 LED35/NW 27W 220-240V DW3 MP1 BRP210 LED22/WW 18W 220-240V DW3 MP1 BRP210 LED26/WW 22W 220-240V DW3 MP1 BRP210 LED31/WW 27W 220-240V DW3 MP1



REDUCTION
REVOLUTION

Distributed by Reduction Revolution
www.reductionrevolution.com.au

www.philips.com.sg/BrighterLegacy

© 2015 Koninklijke Philips N.V. All rights reserved. Philips reserves the right to make changes in specifications and/or to discontinue any product at any time without notice or obligation and will not be liable for any consequences resulting from the use of this publication.

