



HOW TO READ AN FKW-15110 METER

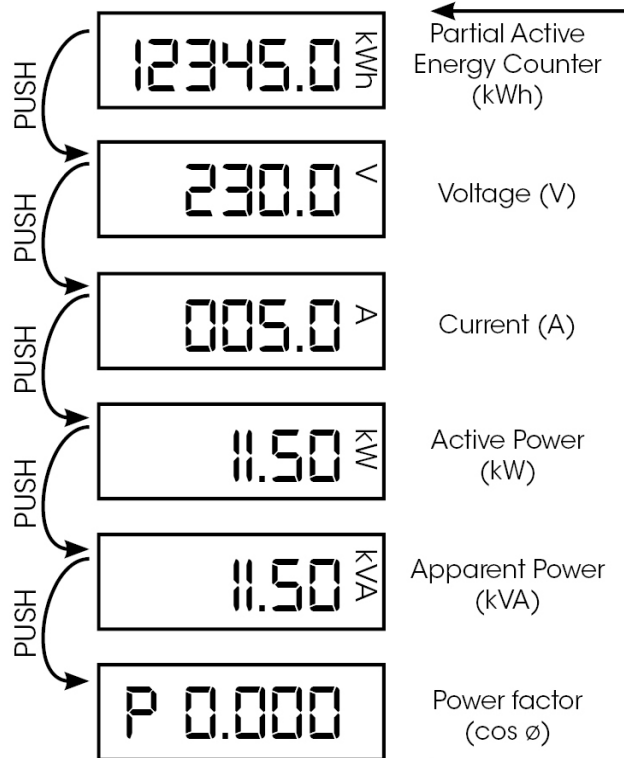
The MATElec Australia range of KWH Meters are designed to accurately provide the end user with all necessary information regarding energy use.

The FKW-15110 Meter display automatically alternates between 6 different readings. These can also be scrolled through by pressing the blue button. The FIRST reading is the most common, showing KWH.

1.



2.



To determine electricity usage over a given period of time:

- Record usage at the beginning of usage period
- Record usage at the end of usage period
- Subtract (a) from (b) for total usage

Please note: the meter cannot be 'reset' to zero.