

SINGLE PHASE - NMI APPROVED

FEATURES & BENEFITS

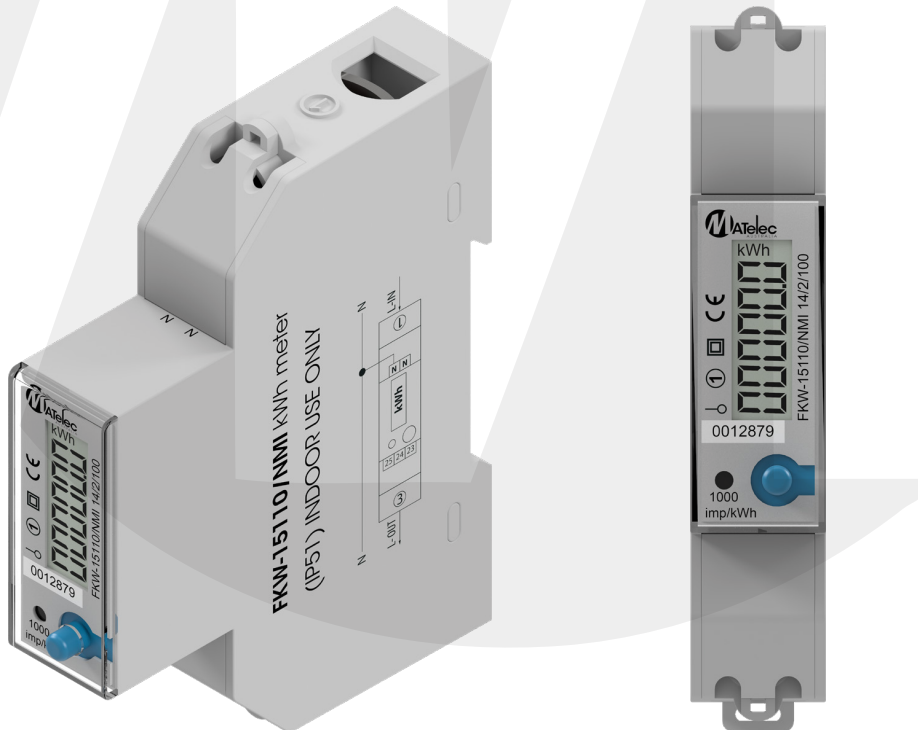
- New slimline design
- Digital LCD display
- Tamper seal kit supplied
- 1 year warranty
- **Note** - Not suitable for solar applications



SPECIFICATIONS

Materials:	Housing - Fire resistant ABS
Weatherproof rating:	IP51
Display:	Backlit blue LCD
Accuracy class:	Class 1
Insulation class:	Class 2
Maximum rated current:	100 Amp
Operational current range:	0.25 - 100 Amp
Over current withstand:	1000 Amp for 0.1s
Nominal voltage:	230 Vac
Operating frequency:	50 - 60 Hz
Maximum cable capacity:	25mm ² (neutral 2.5mm ²)
Operating temperature:	-20°C to 65°C
Test output flash rate:	1000 impulses per kWh
Power supply indicator:	Mains power ON
Consumption indicator:	Flashing on load
Dimensions:	90mm (H) x 18mm (W) x 72mm (D) 1 Module

Report/Certification Number	Date Issued
UL, LLC test report reference no. R11456868-NMI (NMI M6-1)	27 - 07 - 2017
NMI M6 Clause A.2.16 Short Term Overcurrent Test C, Ref PL1545-R1	19 - 04 - 2017
National Measurement Institute CoA NMI 14/2/100	04 - 10 - 2017
IEC Test Report IEC62053-21:2003, IEC 62053-11:2003, SICEM Ref WJ14297 (IEC 62053-21:2003 and IEC 62052-11:2003)	12 - 12 - 2014



Code	Description	Packing	MOQ	Ctn
FKW-15110/NMI	KWh Meter - Din Rail Mount - Direct Electronic 0-100A - Single Phase - NMI Approved	1	1	30