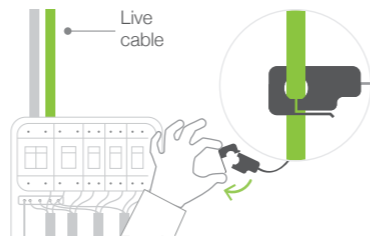




engage hub solo Installation guide

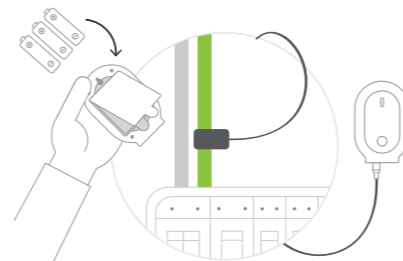
Installing the sensor clamps | No solar power



1. Locate the live feed cable on your panel/fusebox. This is normally located near the entrance of the house.
2. Pull the clasp to open the Sensor, place it around the feed cable and push the clasp to shut.

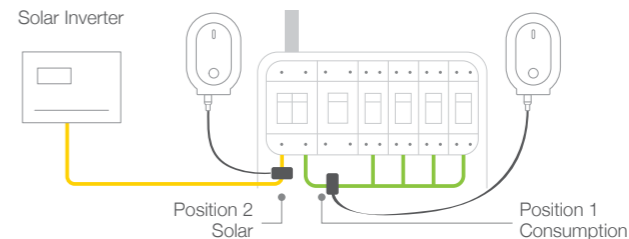
You can also use additional Transmitters (up to 5) and Sensors to monitor individual circuits.

⚠ IMPORTANT: EFERGY RECOMMENDS THAT INSTALLATION IS CARRIED OUT BY A QUALIFIED ELECTRICIAN. 1




3. Open the Transmitter case and insert three AA batteries (not included).
4. Insert the sensor jack into the base of the Transmitter. Mount near the meter using velcro pads or similar (not included).

Installing the sensor clamps | With solar power



The sensor clamps only measure the amount of power, not the direction of flow. For this reason the clamps and transmitters must be installed correctly (view diagram above).

 **Position 1**
Power usage (load only)

 **Position 2**
Solar power production only

 See installation examples at: reductionrevolution.com.au/engage-solar

⚠ IMPORTANT: EFERGY RECOMMENDS THAT INSTALLATION IS CARRIED OUT BY A QUALIFIED ELECTRICIAN. 2

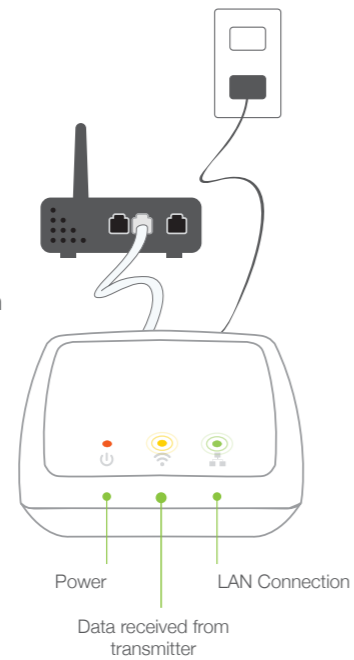
Connecting the Engage Hub

- Plug the Engage Hub into a mains power source using the supplied AC adaptor, and into a spare port on a router with internet access using the LAN cable provided.

- The red light will light continuously, showing that the hub is powered on. The yellow light (centre) will come on next, indicating that the hub is looking for a transmitter within range. A green light states that a working internet connection has been connected to the hub.

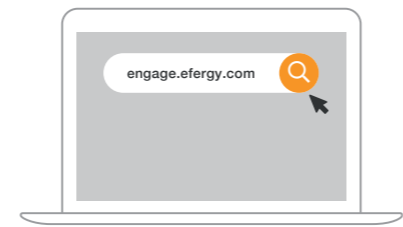
- Within a minute or two you should see both the yellow light and green light come on and stay on solid for a few seconds and then go out. The lights may or may not illuminate at the same time. Once you see the yellow and green lights come on for a few seconds and then go out, you are ready to register your Engage Hub.

Note: If your router does not recognise your new hub, it may need to be reset. To do so, press the reset button or power cycle the router.

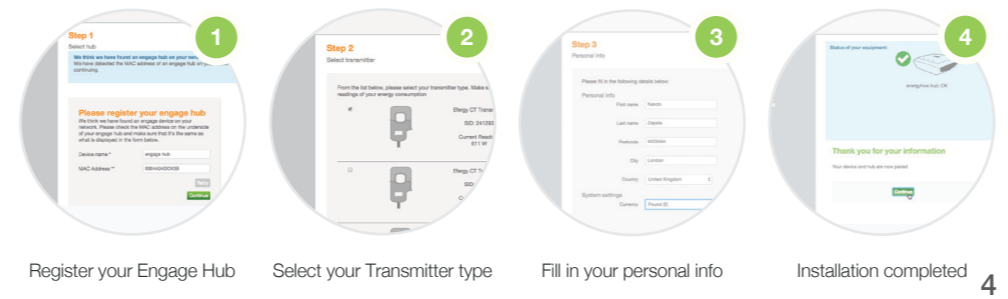


3

Setting up the online service



Visit **engage.efergy.com**, register and follow our step by step setup process on-screen. It may be more comfortable for you to carry out this process on a laptop near where the transmitter is installed.



What's in the box

- 1 x Engage Hub
- 1 x Ethernet cable
- 1 x AC/DC adaptor
- 1 x Installation guide

Technical info

Model	engage hub
Model number	HH-2.0
Transmission	433.5MHz
Engage Hub power	AC/DC

Model No. HH-2.0 Designed in the UK / Made in the PRC



Imported and distributed by
Reduction Revolution Pty Ltd

Visit our website
www.reductionrevolution.com.au/efergy

See installation examples at
reductionrevolution.com.au/engage-solar

Customer support
customercare@efergy.com

5