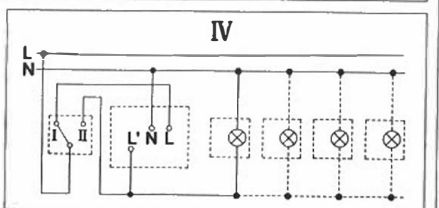
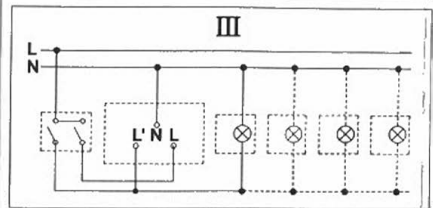
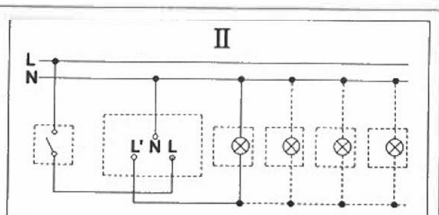
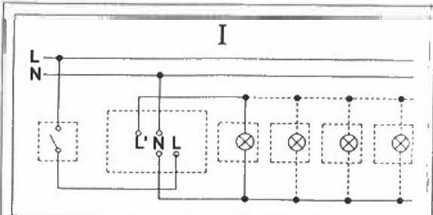
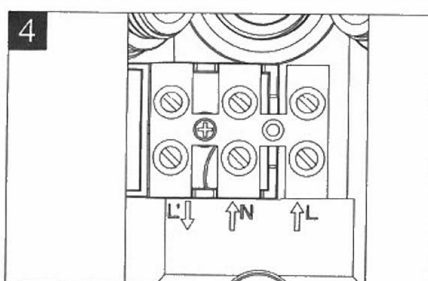
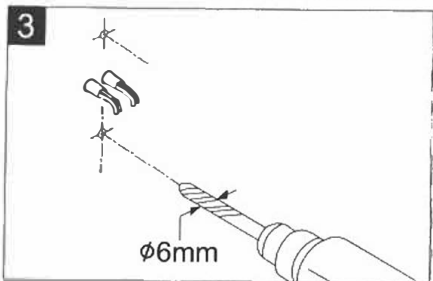
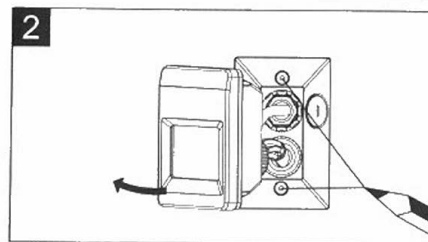
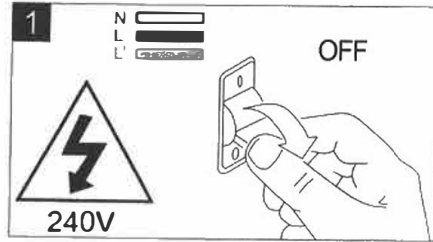


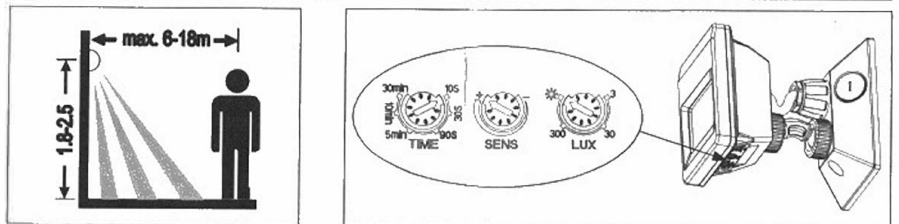
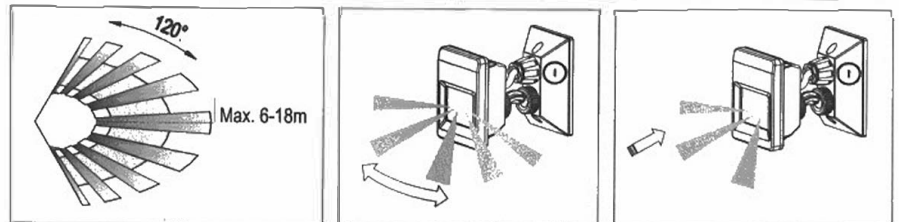
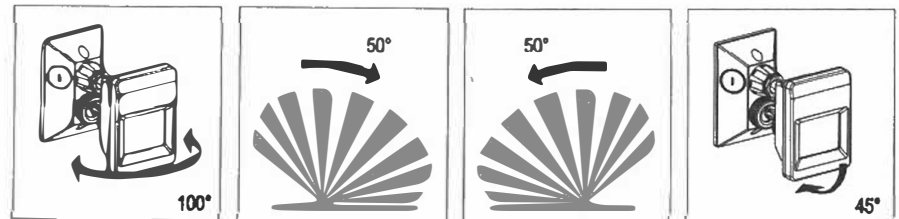
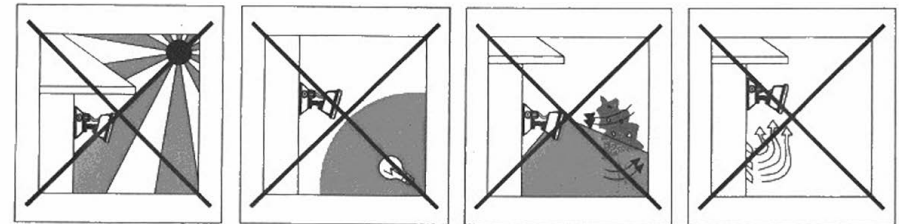
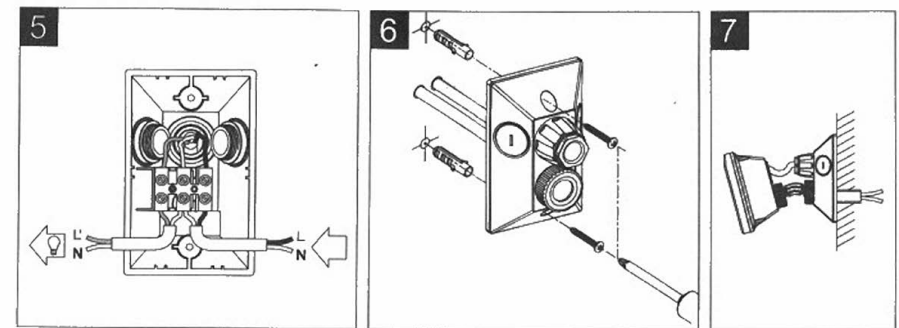
204526 204527

	135x115x76.4mm
	220-240 V~ 50/60Hz
	max.2000W
	max.1000W
	max.120°

	max.6-18 m(<24°C)(adjustable)
	1.8-2.5m
	10 sec - 30 min
	3-2000 Lux
	IP66



204526 204527



Distributed by:
Reduction Revolution Pty Ltd
www.reductionrevolution.com.au/LED

www.eglo.com.au

www.eglo.com.au

204526 204527

FUNCTION:

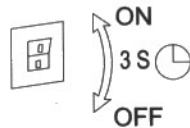
- LUX: The LUX knob controls the ambient light level at which the sensor will switch on. At the "sun" position, the sensor will operate 24 hours a day. At the "3" position, the sensor will only operate at night. You can set the sensor to operate at the desired lux level by adjusting the LUX knob.
- SENS: Controls the sensor 'range', adjust to suit the area. Increased sensitivity is better for long range & large areas, decreased setting for short range or small areas.
- TIME: The TIME knob controls how long the light/s will stay on after movement is detected. Once the light has been triggered by the PIR sensor, any subsequent detection will start the timed period again from the beginning.

MANUAL OVERRIDE:

When power is first switched on, the unit will be in AUTO MODE.

SWITCHING TO MANUAL MODE:

1. Switching the ON/OFF main switch off & on twice in about 3 seconds, the unit will automatically change into MANUAL MODE.



SWITCHING TO AUTO MODE:

1. Switching the ON/OFF main switch off then on after 3 seconds, the sensor will change into AUTO MODE.
2. Keep the main switch on, the sensor will switch to AUTO MODE after 8 hours.



Distributed by:

Reduction Revolution Pty Ltd

www.reductionrevolution.com.au/LED

www.eglo.com.au