



Distributed by:  
Reduction Revolution Pty Ltd  
[www.reductionrevolution.com.au/LED](http://www.reductionrevolution.com.au/LED)



# CorePro LEDtube EM/ Mains T8

## CorePro LEDtube 600mm 9.9W 865 T8 AU

Philips CorePro LEDtubes are the quick and easy way to replace T8 fluorescent or other LED tubes with a fast pack back time. Not only does the Core range of LEDtubes require a low initial investment, but LED energy efficiency also delivers instant savings that you can bank on over a long and reliable lifetime. Plus, with the same lamp size and light distribution as fluorescent alternatives, you'll never know the difference. There are two ways to install these LED tubes: Rewire your existing fluorescent-based luminaires so the CorePro LEDtubes work directly on the Mains. Or simply change the fluorescent starter to an LED starter that can be used with your Electromagnetic ballasts.

### Warnings and Safety

- NOTE: The overall energy efficiency and light distribution of any installation that uses these lamps will be determined by the design of the installation.
- Installation must be done according to the installation diagrams provided with the lamp or available online. Installation must be done by a certified professional.

### Product data

| General information    |                                  | Color Designation                     |               |
|------------------------|----------------------------------|---------------------------------------|---------------|
| Cap-Base               | G13 [ Medium Bi-Pin Fluorescent] | Color Designation                     | Cool Daylight |
| EU RoHS compliant      | Yes                              | Correlated Color Temperature (Nom)    | 6500 K        |
| Nominal Lifetime (Nom) | 30000 h                          | Luminous Efficacy (rated) (Nom)       | 90.00 lm/W    |
| Switching Cycle        | 200000                           | Color Consistency                     | <6            |
|                        |                                  | Color Rendering Index (Nom)           | 80            |
|                        |                                  | LLMF At End Of Nominal Lifetime (Nom) | 70 %          |
| Light technical        |                                  | Operating and electrical              |               |
| Color Code             | 865 [ CCT of 6500K]              | Input Frequency                       | 50 to 60 Hz   |
| Beam Angle (Nom)       | 240 °                            | Power (Nom)                           | 9.9 W         |
| Luminous Flux (Nom)    | 900 lm                           |                                       |               |

## CorePro LEDtube EM/Mains T8

|                                 |           |
|---------------------------------|-----------|
| Lamp Current (Max)              | 48 mA     |
| Lamp Current (Min)              | 48 mA     |
| Starting Time (Nom)             | 0.5 s     |
| Warm Up Time to 60% Light (Nom) | 0.5 s     |
| Power Factor (Nom)              | 0.9       |
| Voltage (Nom)                   | 220-240 V |

### Temperature

|                      |        |
|----------------------|--------|
| T-Ambient (Max)      | 45 °C  |
| T-Ambient (Min)      | -20 °C |
| T-Storage (Max)      | 65 °C  |
| T-Storage (Min)      | -40 °C |
| T-Case Maximum (Nom) | 45 °C  |

### Controls and dimming

|          |    |
|----------|----|
| Dimmable | No |
|----------|----|

### Mechanical and housing

|               |         |
|---------------|---------|
| Bulb Finish   | Frosted |
| Bulb Material | Glass   |

|                |                    |
|----------------|--------------------|
| Product Length | 600 mm             |
| Bulb Shape     | Tube, double-ended |

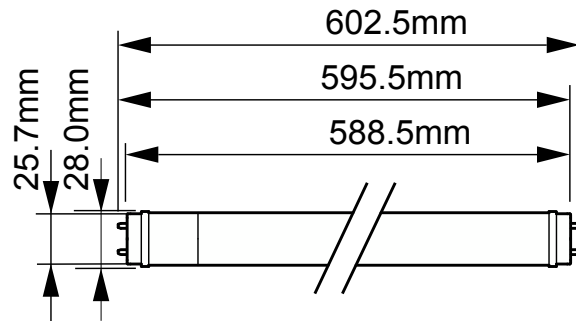
### Approval and application

|                       |                                       |
|-----------------------|---------------------------------------|
| Energy Saving Product | Yes                                   |
| Approval Marks        | RoHS compliance KEMA Keur certificate |

### Product data

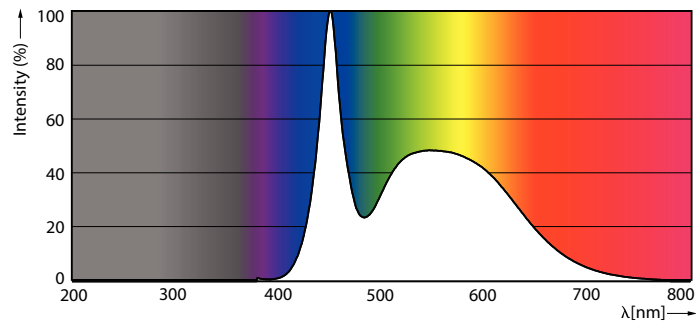
|                                 |                                      |
|---------------------------------|--------------------------------------|
| Full product code               | 871951444717200                      |
| Order product name              | CorePro LEDtube 600mm 9.9W 865 T8 AU |
| EAN/UPC - Product               | 8719514447172                        |
| Order code                      | 929003520219                         |
| Numerator - Quantity Per Pack   | 1                                    |
| Local code description          | TLED600865G3                         |
| Numerator - Packs per outer box | 10                                   |
| Material Nr. (12NC)             | 929003520219                         |
| Net Weight (Piece)              | 0.110 kg                             |

## Dimensional drawing



CorePro LEDtube 600mm 9.9W 865 T8 AU

## Photometric data

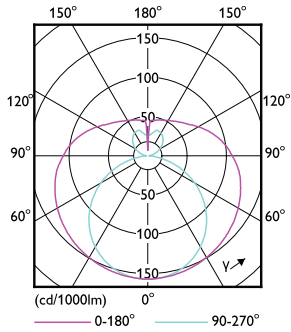


Spectral Power Distribution Colour

**Distributed by:**  
Reduction Revolution Pty Ltd  
[www.reductionrevolution.com.au/LED](http://www.reductionrevolution.com.au/LED)

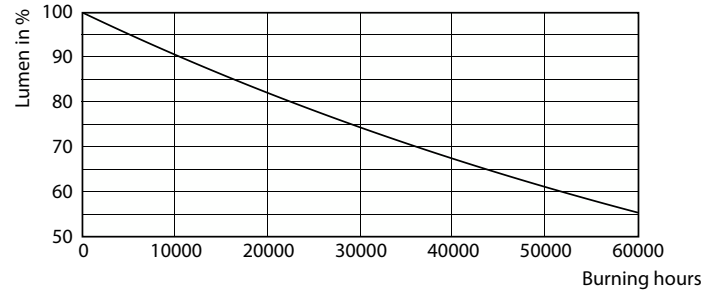
# CorePro LEDtube EM/Mains T8

## Photometric data



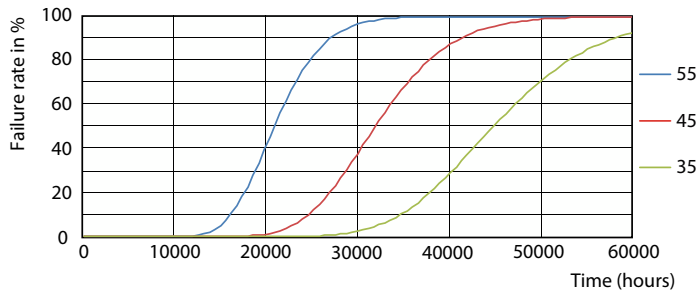
Light Distribution Diagram

## Lifetime

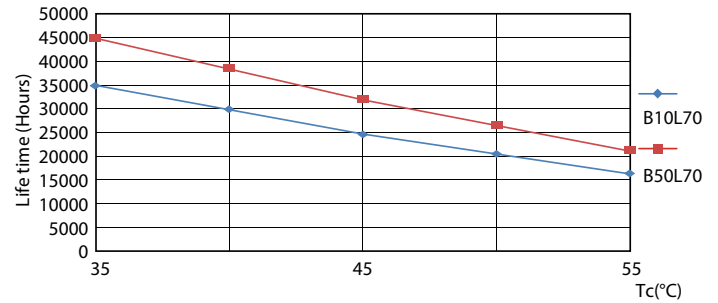


Lumen Maintenance Diagram

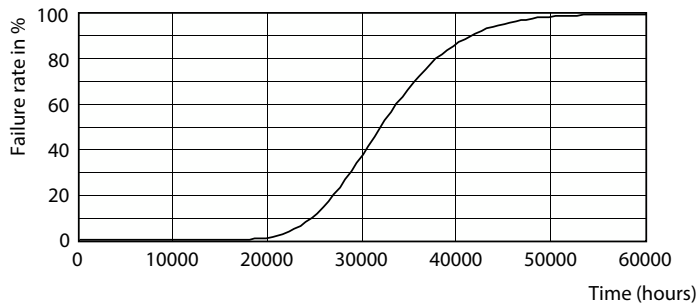
## Lifetime



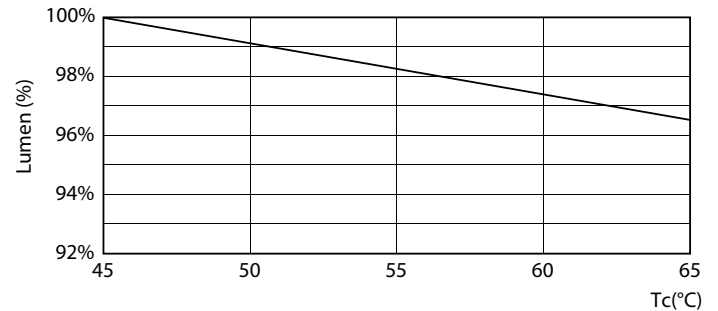
FailureRate



LifetimeVsTc



Life Expectancy Diagram



Lumen Maintenance Diagram

