



goTenna

EdgeRelay™

This ad hoc infrastructure support node covers two goTenna mesh networks persistently. Environmental ruggedization, external charging options to extend onboard power, and varied mounting support ensure sustained operational coverage without expensive and cumbersome installations. Made in USA.

Expand Your Range

Maximize your communication potential by strategically placing the goTenna EdgeRelay™ in remote, hard-to-reach areas. Tested at over 100 miles point-to-point line-of-sight in real-world scenarios, EdgeRelays can be connected together to create several hundred square miles of coverage.

Set and Forget

The goTenna EdgeRelay™ is tailored to function autonomously in the toughest environments. With solar and direct power options, along with a dependable internal battery, the goTenna EdgeRelay™ aims to provide continuous operation as a dedicated relay with no recurring monthly costs. The robust 256Wh onboard battery is designed to sustain the system for over three days without external power input, offering reliable and consistent performance.

Swappable Antennas

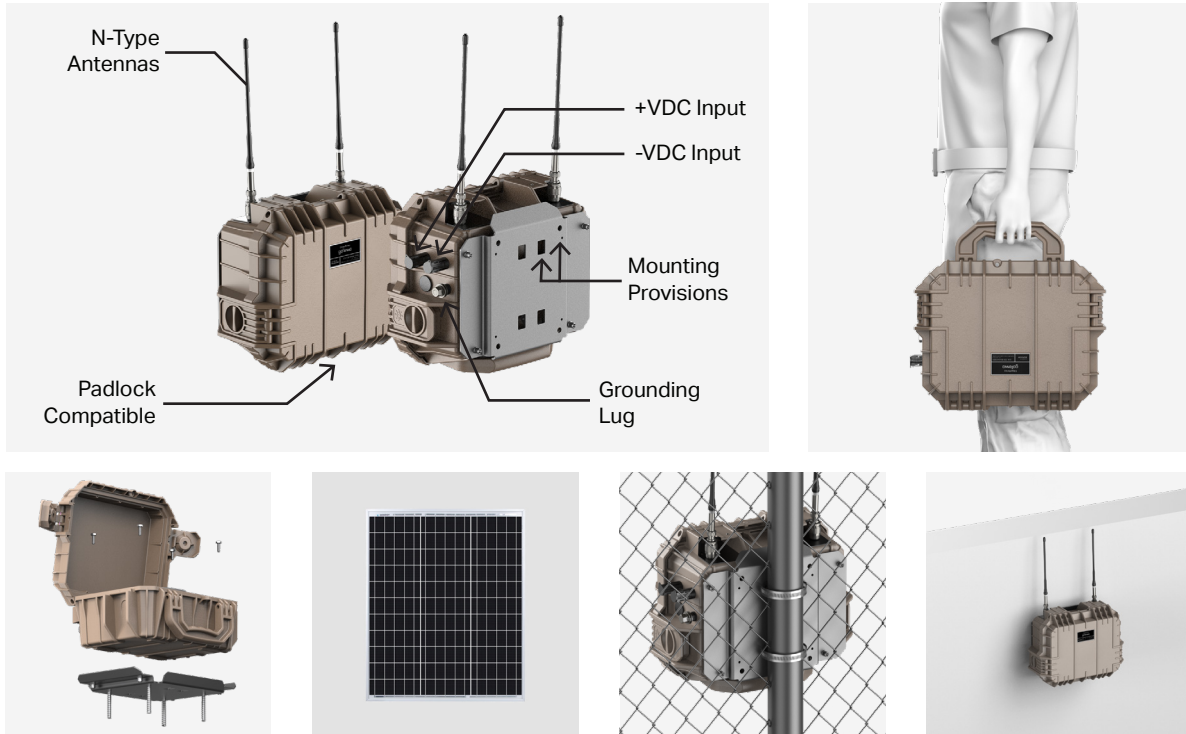
The EdgeRelay™ utilizes standard N-Type connections to enable flexibility for deployment with your preferred antenna or the included direct-mount flexible antennas. Easily connect and extend the goTenna EdgeRelay™ to a range of widely available antenna and cabling options to customize for mission requirements.

Deploy Anywhere

The goTenna EdgeRelay™ comes with various mounting possibilities, including pole, wall, and ground options. The enclosure is fully environmentally protected with an IP65+ rating. With multiple tamper-resistant options, shock and vibration absorption, lightning protection, and rodent-resistant cabling, the goTenna EdgeRelay™ is equipped to perform reliably in all conditions.



Specifications



Network

Radios	2 x goTenna Pro X2 Radios
Antennas	2 x Laird G450BN with integrated N-Type adapters (swappable)

Interfaces

Antenna	2 x N-Type Female
Power	Amphenol H4 PV Connectors

Power

Battery Capacity	256Wh Lithium Iron Phosphate (LiFePO4)
Protection	Internal coaxial lightning surge protection + grounding lug
Input Voltage	19 - 60VDC (Direct Solar or DC) - 200 Watt Maximum

Physical

Weight	15.2 lbs*
Dimensions	14.0"L x 10.9"W x 6.3"T
Operating Temperature	-20 -60°C
Weather Resistance	IP65

*does not include specific mounting kits, antennas, charging cables, or solar panels

Accessories

Mounting Kits	Pole, masonry, hollow wall, ground
Solar	50W and 100W solar panel options
Cabling	6 ft solar-compliant cable (rodent-resistant cable available)
AC Charging	External power supply for 100-240VAC 50/60Hz sources

Contact prosales@gotenna.com for more accessory information.

Mil Std 810G/H	Method	Procedure
Temperature Shock	503.6	I-C
Rain	506.6	I
Salt Fog	509.5	I
Vibration	514.7	I
Shock	516.7	I