

# TECHNICAL BULLETIN FIND ALL HIGH PRESSURE LEAKS FAST



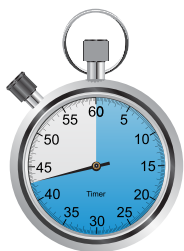
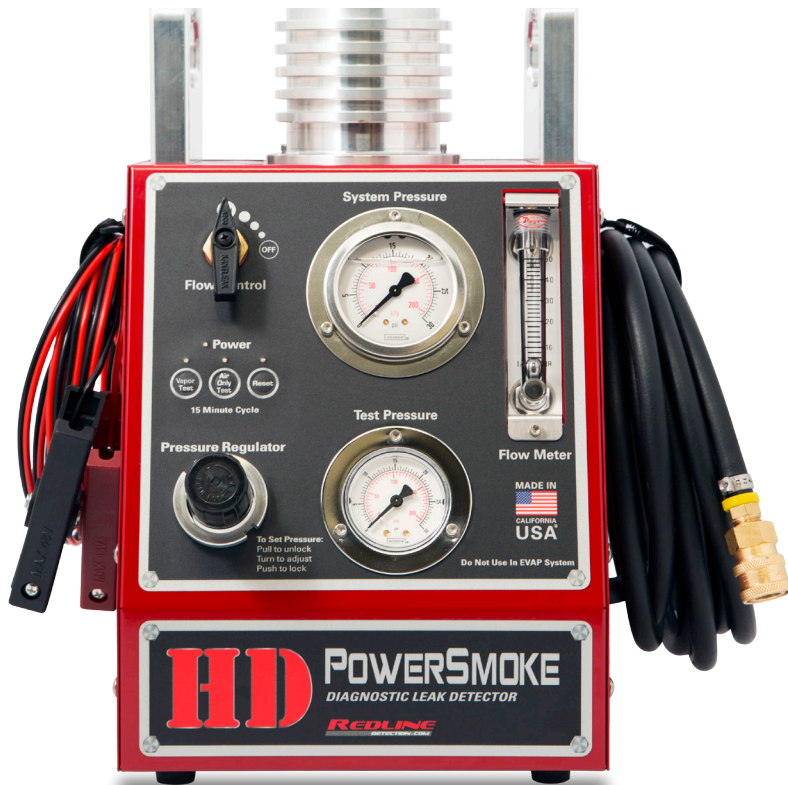
# HD POWERSMOKE™

Developed in collaboration with a major American heavy duty OEM, HD PowerSmoke™ simulates a high-pressure boost load so the entire system can be tested for faults with the engine safely off. It is the only diagnostic machine in the heavy duty market that can, in a single 10-minute procedure, reliably detect any high-pressure leak, pinpoint its exact location and precisely identify failing components, saving heavy duty truck operators and fleets valuable time and keeping trucks on the road.

“No rating goes high enough to put a number on this piece of equipment.”

“I can’t stress enough how helpful this tool is in finding the elusive failures that used to result in hours of tear down and inspection”

Professional Tool and Equipment News, Tool Review  
August 2016



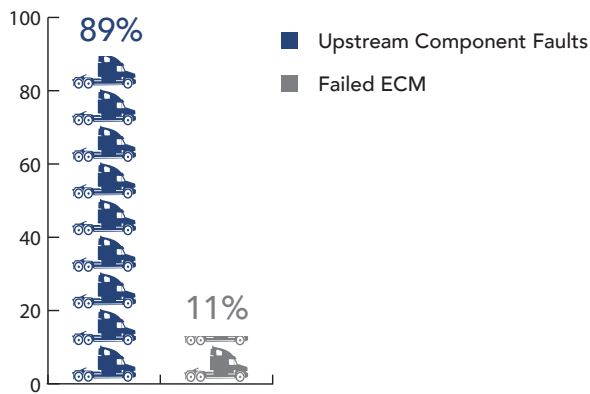
## Average Diagnostic Time Saved

**43 minutes** per vehicle

### HIGH PRESSURE VAPOR QUICKLY LOCATES

- The root cause of excessive DPF regeneration events
- Turbo / boost leaks
- Charge air cooler leaks
- Exhaust system leaks
- Wind and water leaks
- Cabin leaks
- Intake system leaks
- Seals, gasket, hoses, fittings, etc.
- The cause of dangerous fumes inside the cabin

### CAUSES OF DPF FAILURE

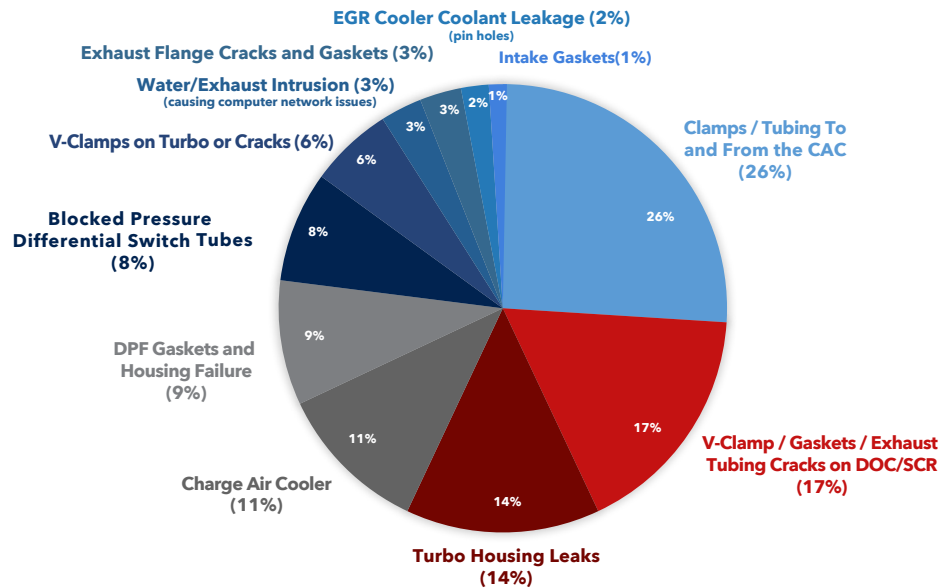


www.RedlineDetection.com

+1.714.451.1411



### FAILING COMPONENTS / ISSUES DIAGNOSED BY HD POWERSMOKE



#### Application Details:

- HD PowerSmoke™ utilizes adjustable test pressure from 2 to 20+ PSI (0.14 to 1.4+BAR)
- HD PowerSmoke's™ compact, rugged design is built up of professional grade steel and billet aluminum
- HD PowerSmoke™ runs on shop air and 110-250V AC or 12V DC
- Weighs only 19 lbs.

"Since we have started using this we have cut diagnosis times and increased overall efficiency in our shop. "Using this technology has saved us around a two thirds the time in locating faults. We have improved our customer service by 38%. By adding this technology, we are repairing 2 more vehicles every day. That's huge."

"I don't know how we were able to operate without this technology before."

**Chris Michael**  
Valley Power Systems

"This technology will change the way we deal with DPF/regen issues forever. It's impossible to imagine another way to find leaks so quickly and accurately"

**Stacey David**, former host of  
*TRUCKS* on Spike TV and Host of *Gearz*



PART NUMBER: 95-0171

#### KIT INCLUDES:

Accessory Storage Case, Power INTAKE™ Adaptor 3.9 in (10 cm), OEM-Approved Smoke Producing Agent, Block-Off Coupler, Exhaust Stack Retention Hoop, SmokeMeister Wand, Tip Adaptor, Halogen Inspection Light, AC Power Cable, Hex Key, Cooling System Adaptor, Oxygen Sensor Port Adaptor, Temperature Sensor Port Adaptor, and Pressure Sensor Port Adaptor.

