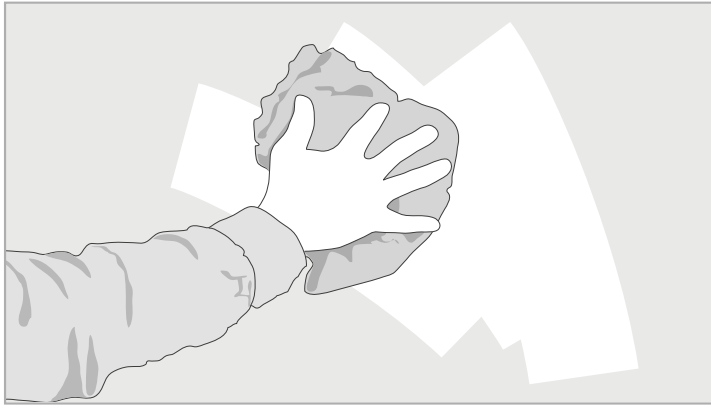


WINDOW GRAPHIC INSTALLATION INSTRUCTIONS

(Wet application to glass)

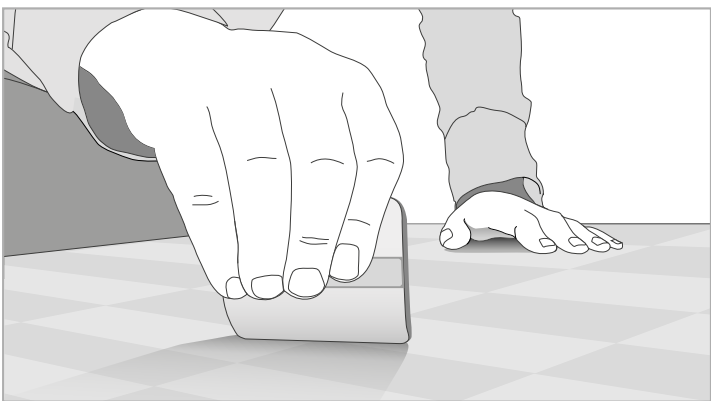
hyper



Step 1: Surface prep

To start, give your window a good clean with glass cleaner and wipe down with a clean lint free cloth to ensure no dirt, dust or grease remains. Before removing any layers of the graphic give your hands a quick, but thorough clean to remove any grease that could stain the window graphic.

You will need: Spray bottle, ladder, water, a few drops of washing up liquid, a squeegee and someone to help you.



Step 2: Graphic prep

Start by placing the graphic face down on a flat surface and use a squeegee to press the sticker all over using strokes in one direction. This ensures the vinyl is fully adhered to the top application paper. Following this, locate the top corners to help you when you start applying.



SQUEEGEE



Step 3: Mix your solution

Fill your spray bottle with warm water and add a few drops of washing up liquid. Shake the bottle well to mix the solution. Once the solution is mixed, spray your hands so that you will be able to touch the graphic and window without leaving fingerprints.



SPRAY BOTTLE



Step 4: Remove the backing

Begin by peeling the backing from one of the top two corners revealing the sticky side of the vinyl. As the sticky side is revealed start to spray the graphic with the solution. While holding the top ask your helper to continue to remove the backing as you continue to spray.



2 PEOPLE



SPRAY BOTTLE



STEP LADDER



2 PEOPLE



SQUEEGEE

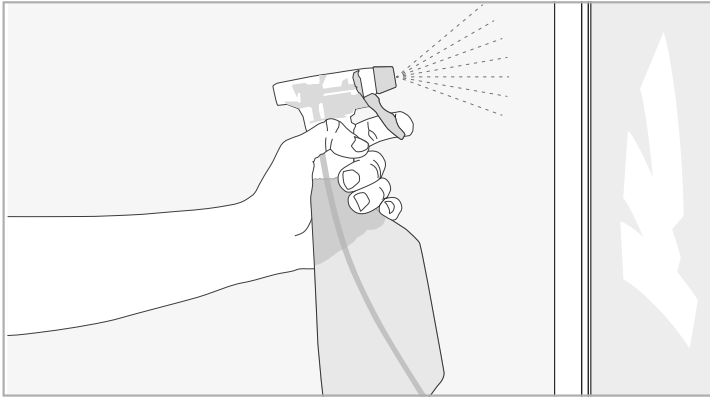


SPRAY BOTTLE

WINDOW GRAPHIC INSTALLATION INSTRUCTIONS

(Wet application to glass)

hyper

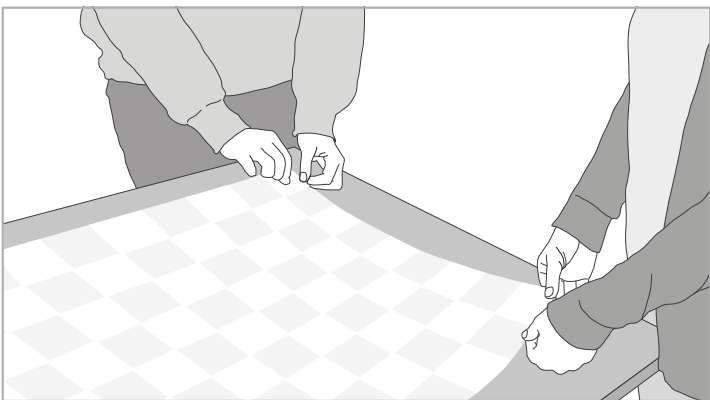


Step 5: Wet the window

Next, spray the glass liberally with your solution.



STEP LADDER SPRAY BOTTLE

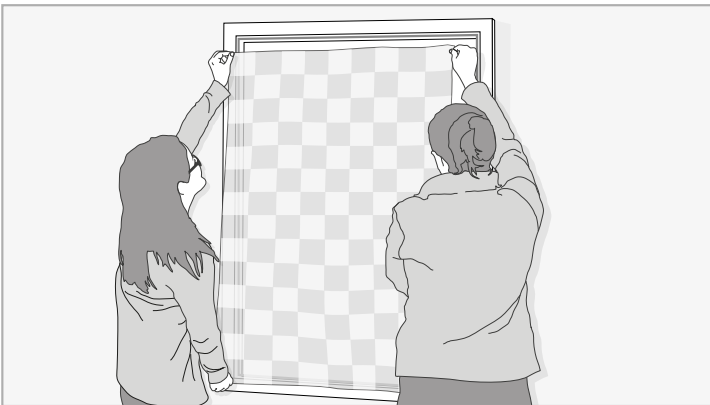


Step 6: Lift the graphic

Lift the graphic by the top corners, but do not allow the graphic to come into contact with itself. Depending on the size of the graphic you may need your friend to take one of the sides to keep the graphic under tension.



2 PEOPLE

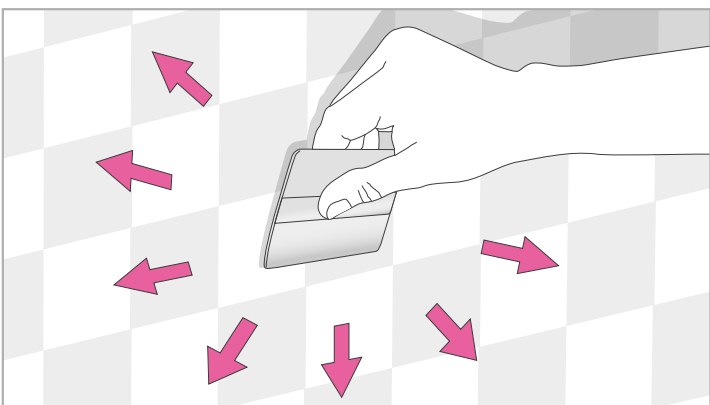


Step 7: Apply to the window (part 1)

Once you have the graphic off the prep surface, place on the window using the sticky side. The solution you applied to the window and graphic will allow you to slide/float the graphic into the desired position.



STEP LADDER SQUEEGEE 2 PEOPLE



Step 8: Apply to the window (part 2)

Using a squeegee, carefully smooth over the graphic always working from the centre out towards an edge. This will remove any excess solution and will allow the graphic to make contact with the glass. Don't worry if the graphic looks slightly streaky at this point, as the streaks will disappear when it dries.

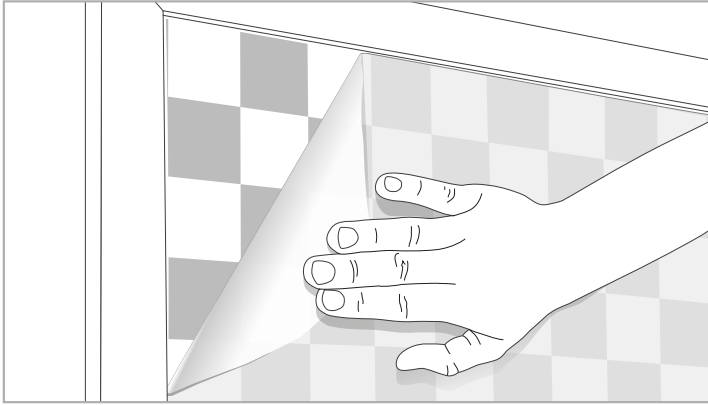


STEP LADDER SQUEEGEE

WINDOW GRAPHIC INSTALLATION INSTRUCTIONS

(Wet application to glass)

hyper



Step 9: Removing the application tape

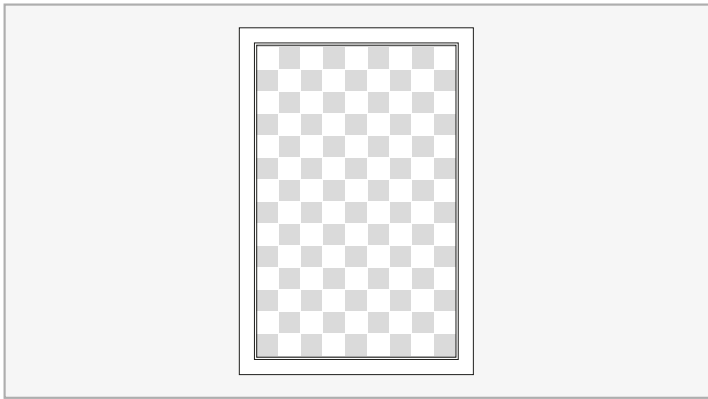
In order to keep the design in place there is a layer of application tape covering the design. Leave this layer on overnight, so that it has fully dried. Once it has dried, carefully peel off the application tape to reveal the design.



STEP LADDER



2 PEOPLE



Step 10: The big reveal

Woo hoo, you now have a completed work of art!

At Vinyl Impression we love to see pictures of all our customers' handy work and ask if you could share your snaps with us.



CAMERA



STEP LADDER



2 PEOPLE



SQUEEGEE



SPRAY BOTTLE