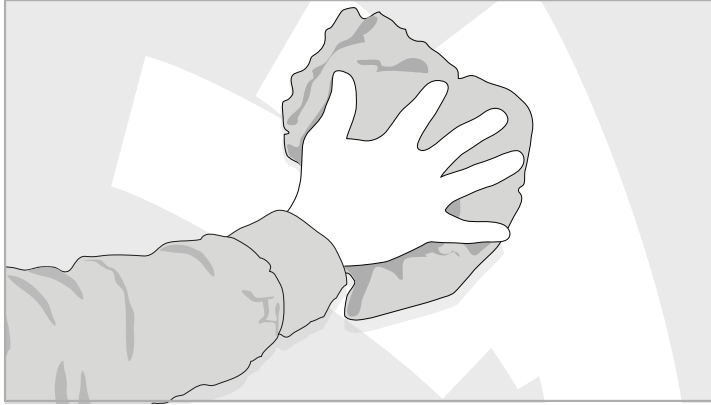


# WHITEBOARD INSTALLATION INSTRUCTIONS

(Single Piece)

hyper

Please note: If you have recently painted your wall you will have to wait 4-6 weeks for the paint to fully cure.



## Step 1: Surface prep

To start, give your wall a good clean and wipe down with a clean cloth to ensure no dirt, dust or grease remains. You may also need to sand back any imperfections on the wall, as uneven surfaces will show. Ensure wall is dry.

You will need: Tape measure, spirit level, masking tape, step ladder, and scalpel/Stanley knife or scissors.



## Step 2: The dummy run

If your whiteboard is going to cover only a part of your wall, get a partner to help tape the panel into position using masking tape in each corner and in the middle. Once you have the graphic taped in place use a spirit level to check its position to ensure you are happy. If you are not, simply reposition the tape until you are.

\* Coloured borders sold separately.



STEP LADDER



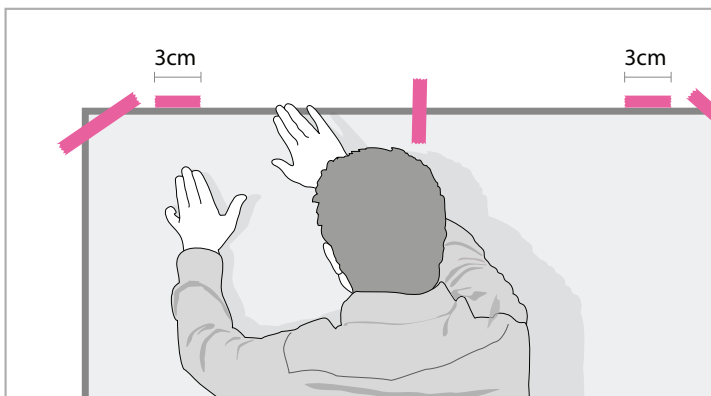
2 PEOPLE



MASKING TAPE



SPIRIT LEVEL



## Step 3: Panel prep

Take two neatly cut pieces of masking tape that are approximately 3cm wide. Place these on the wall flush with the top edge near each top corner, but not on any of the existing tape. These will be used as guides later.



STEP LADDER



MASKING TAPE



STEP LADDER



2 PEOPLE



TAPE MEASURE



PENCIL



MASKING TAPE



SCISSORS



SQUEEGEE

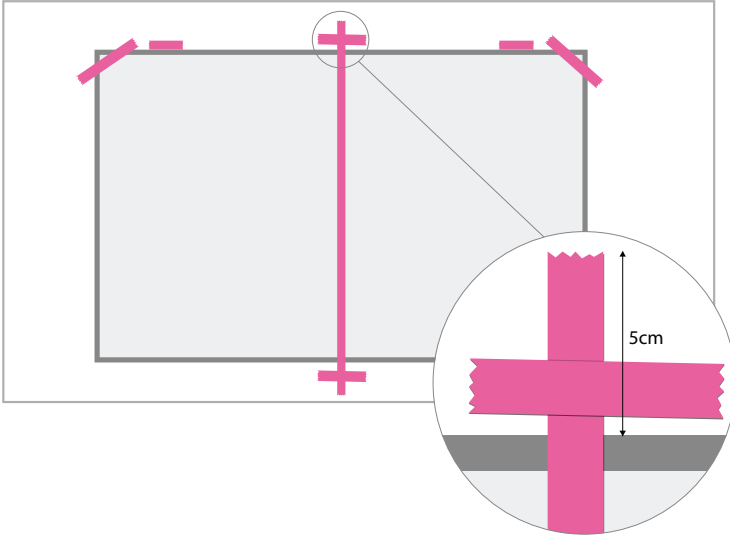


SPIRIT LEVEL

# WHITEBOARD INSTALLATION INSTRUCTIONS (Single Piece)

hyper

Please note: If you have recently painted your wall you will have to wait 4-6 weeks for the paint to fully cure.



## Step 4: Vertical hinge

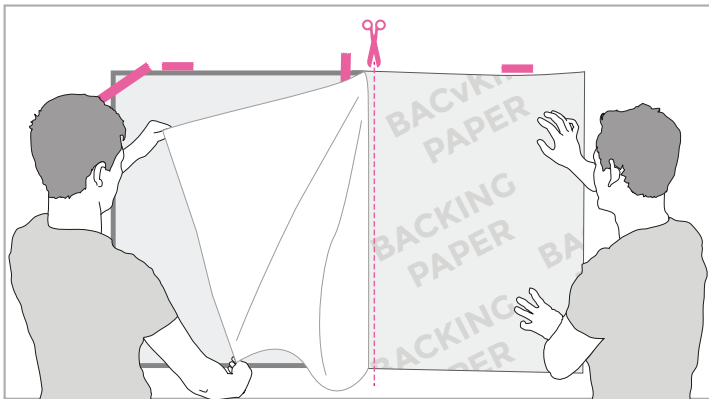
Take a long strip of masking tape and apply it vertically through the centre of the whiteboard making sure that you have at least 5cm of tape attached to the wall above and below the sticker. Apply an additional strip across the top to give some added strength.



STEP LADDER



MASKING TAPE



## Step 5: Peel

Now remove the tape holding the sticker on the right hand side and loosely fold the whiteboard back over itself. Whilst holding the corner get a partner to peel off the backing paper to the hinge in the middle. Then cut the backing paper away using scissors.



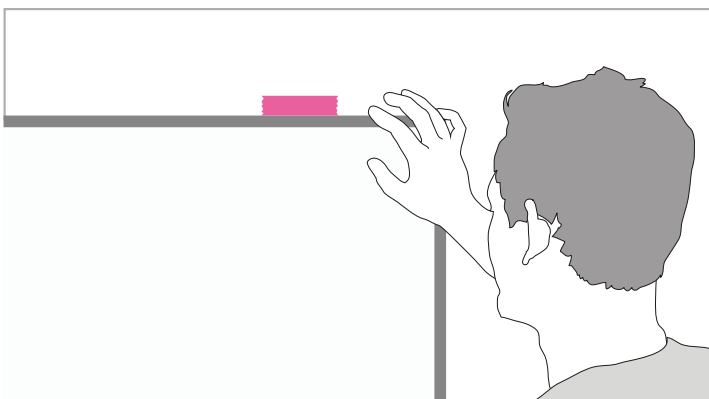
STEP LADDER



SCISSORS



2 PEOPLE



## Step 6: Sticking the graphic (part 1)

Now holding the whiteboard under tension swing it back across the hinge and align the top edge with your masking tape guides, but holding the graphic slightly off the wall. Be careful during this stage that the sticker doesn't come into contact with itself or the wall.



STEP LADDER



2 PEOPLE



STEP LADDER



2 PEOPLE



TAPE MEASURE



PENCIL



MASKING TAPE



SCISSORS



SQUEEGEE



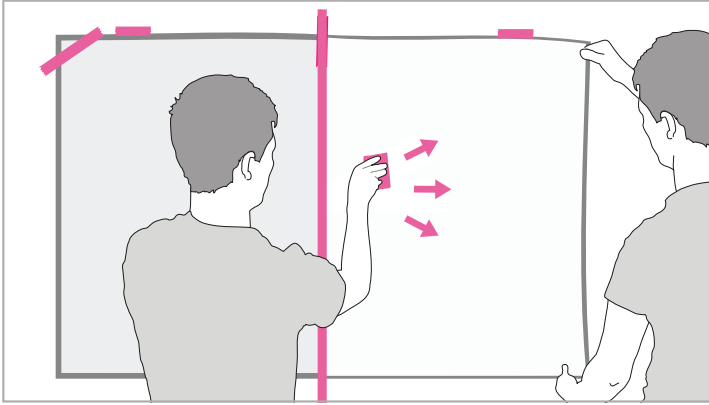
SPIRIT LEVEL

# WHITEBOARD INSTALLATION INSTRUCTIONS

(Single Piece)

*hyper*

Please note: If you have recently painted your wall you will have to wait 4-6 weeks for the paint to fully cure.



## Step 7: Sticking the graphic (part 2)

Continue to hold the graphic under tension while your partner starts to adhere the sticker using a squeegee, applying pressure from the hinge out always pushing from the centre towards an edge; doing this will stop bubbles and creases forming.



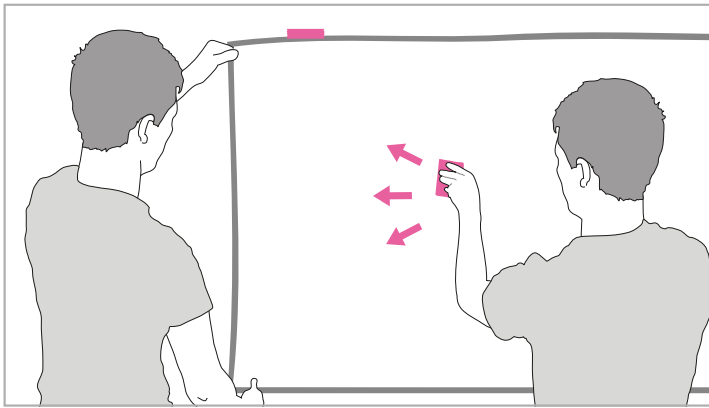
STEP LADDER



SQUEEGEE



2 PEOPLE



## Step 8: Sticking the graphic (part 3)

Now repeat the process on the other side, pulling the graphic back over the hinge removing the backing paper and applying the sticker to the wall starting at the hinge and pushing from the centre at all times. Remember to hold the sticker under tension at all times.



STEP LADDER



SQUEEGEE



2 PEOPLE



## Step 9: The big reveal

Small amounts of bubbling may occur after the graphic is on the wall. If this happens all you need to do is pop them with a small pin and smooth the area with a finger.

Woo hoo, you now have a completed work of art!

At Vinyl Impression we love to see pictures of all our customers' handy work and ask if you could share your snaps with us.



CAMERA

Tah Dah!

## Cleaning tips:

All writings and doodles on our whiteboard vinyl should wipe away with a dry cloth. However, with some pens and in some environments you may need to use window cleaner in order to return the surface to its original appearance.

## Recommended pens:

We recommend that you use Bic dry wipe pens and accessories on our whiteboard vinyls.



STEP LADDER



2 PEOPLE



TAPE MEASURE



PENCIL



MASKING TAPE



SCISSORS



SQUEEGEE



SPIRIT LEVEL