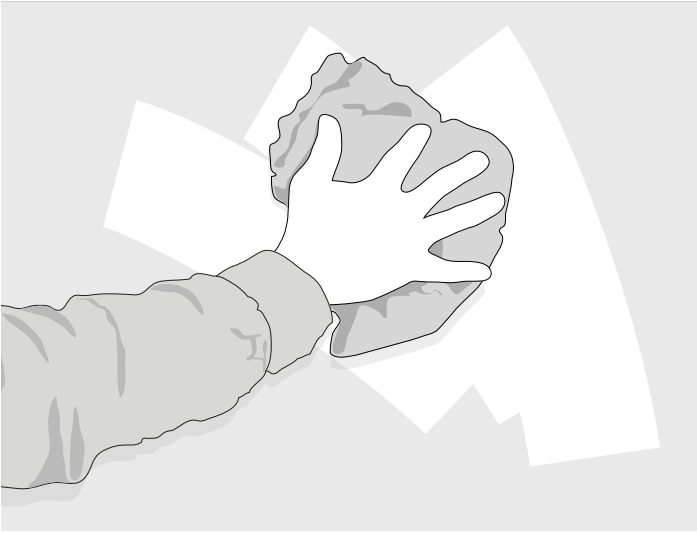


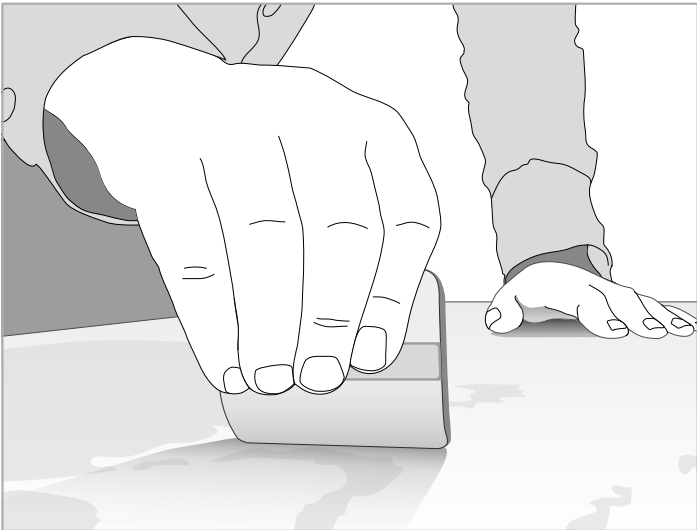
Please note: If you have recently painted your wall you will have to wait 4-6 weeks for the paint to fully cure.



Step 1: Surface prep

To start, give your wall a good clean and wipe down with a clean cloth to ensure no dirt, dust or grease remains. You may also need to sand back any imperfections on the wall, as uneven surfaces will show. Ensure wall is dry, before continuing.

You will need: Squeegee, tape measure, spirit level, masking tape, pencil, step ladder, and scalpel/ Stanley knife or scissors.

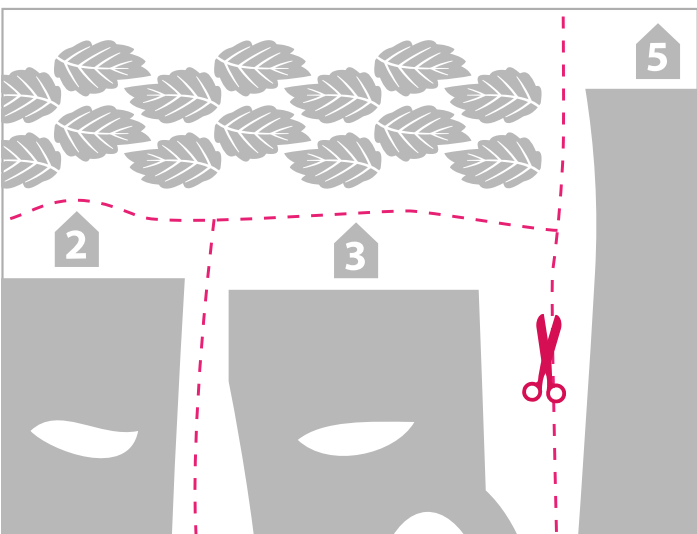


Step 2: Graphic prep

Using a Squeegee, press each sheet all over using strokes in one direction. This ensures the vinyl is fully adhered to the top application paper.



SQUEEGEE



Step 3: Grab your scissors

Now carefully cut around all of the individual elements, making sure that any letters or squares used for matching purposes remain with their parts. As you cut out the different pieces lay them on the floor and group them in six piles each consisting of the parts that make an individual tree. Please see the last page for a guide.



SCISSORS



STEP LADDER



2 PEOPLE



TAPE MEASURE



PENCIL



MASKING TAPE



SCISSORS

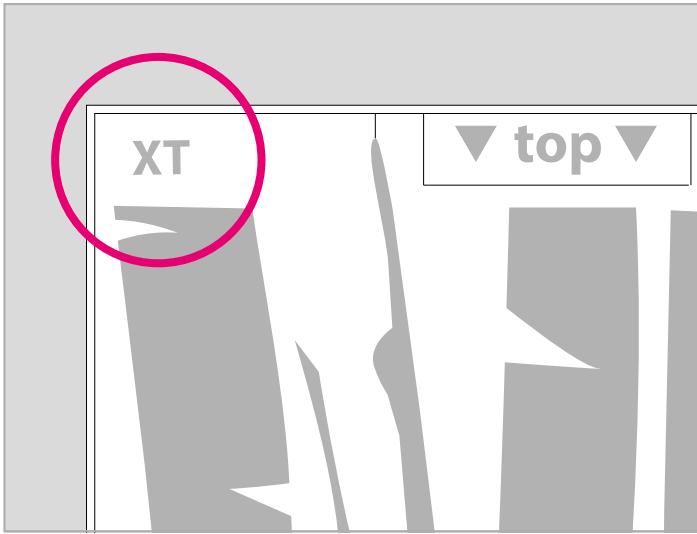


SQUEEGEE



SPIRIT LEVEL

Please note: If you have recently painted your wall you will have to wait 4-6 weeks for the paint to fully cure.

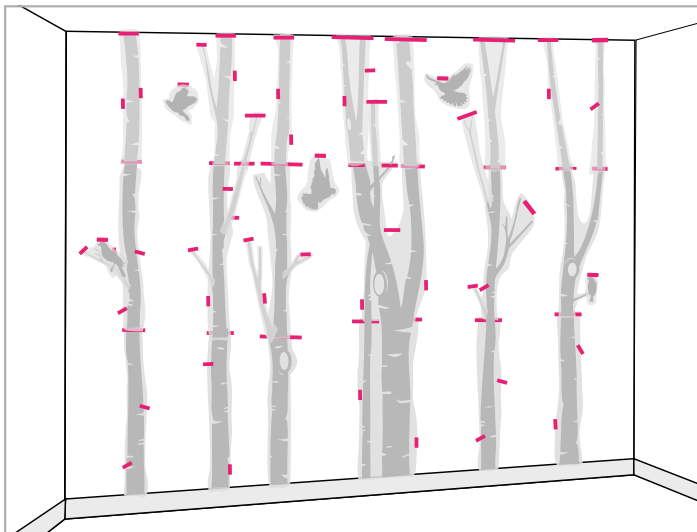


Step 4: How the trees work

Each tree is made up of a trunk that is split into three pieces as well as additional branches, individual leaves and birds.

In order to make the tree trunk you need to match the corresponding numbered pieces together using the guides that are placed within the design.

Most of the branches have socket joints to help limit mistakes. However the few branches in the top sections should be self explanatory.

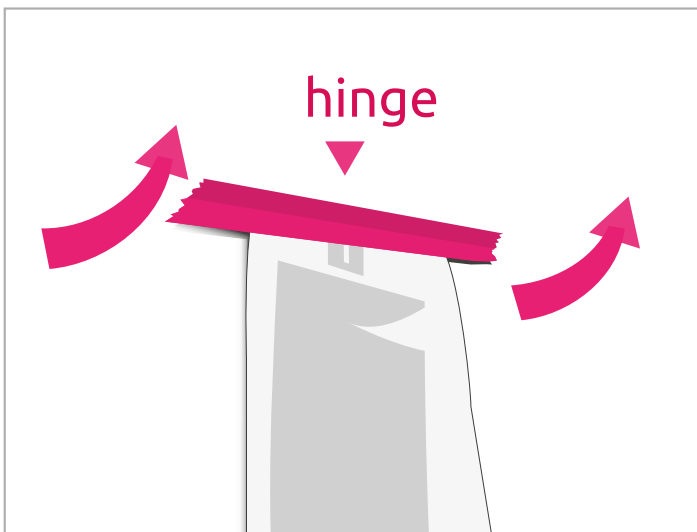


Step 5: The dummy run

Now that you have your six trees in piles and know how they go together, start sticking all of the parts to the wall using masking tape in order to see how your composition will look once they are fully applied. Do not remove any layer of the sticker during this stage. Once you have created your scene, take a big step back and have a look to see if you are happy. If you need to make any adjustments, simply move the tape and reposition the graphics.



MASKING TAPE



Step 6: The prep

Now you are happy with your positioning take long strips of masking tape and apply them along the top edge of each part of the tree, this will create a hinge. When you have two pieces to join start with the part nearest the floor, then tape the middle section and finally the top.



STEP LADDER



2 PEOPLE



MASKING TAPE



STEP LADDER



2 PEOPLE



TAPE MEASURE



PENCIL



MASKING TAPE



SCISSORS

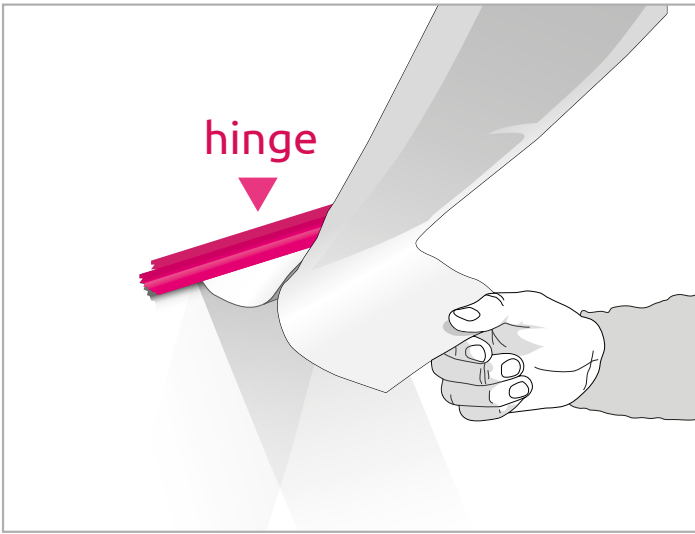


SQUEEGEE



SPIRIT LEVEL

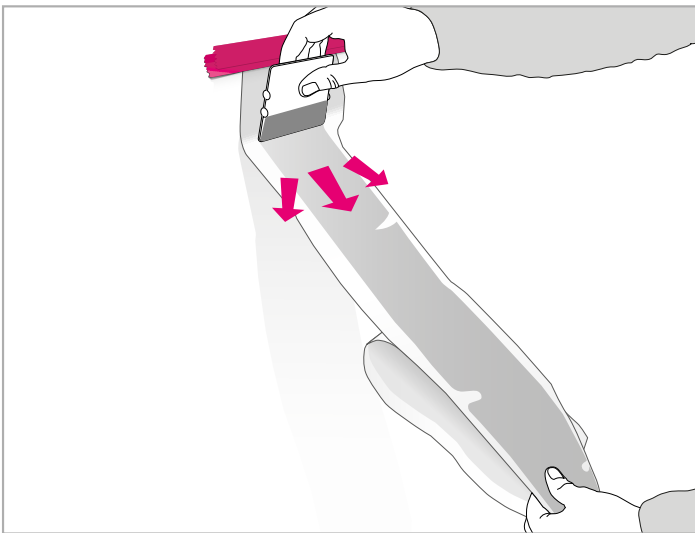
Please note: If you have recently painted your wall you will have to wait 4-6 weeks for the paint to fully cure.



Step 7: Remove the backing

To make the bottom section of the trunk easier to fit, it is wise to tape the loose end of the middle section to the side.

Now flap the bottom section of the trunk above itself and start to peel the backing paper away at the hinged edge, revealing about 20-30cm. During this process make sure the sticky side doesn't come into contact with itself or the wall.

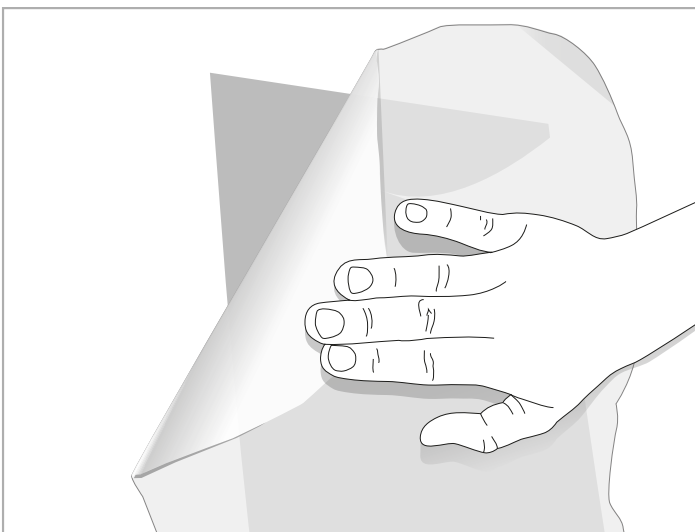


Step 8: Get sticking

Once some of the sticky side has been revealed, flap the graphic back down holding it under tension and slightly off the wall. Start applying pressure with a squeegee from the hinge down working from the centre out. Keep revealing 20-30cm sections and repeat application until the whole element is applied.



SQUEEGEE



Step 9: Remove the application tape

Now that the bottom section is applied you will need to remove the application tape that is on top of the sticker. You do this by taking one of the top corners and peel it away, sliding it back across the wall at an angle to the sticker. Do this slowly so that if any sections remain stuck to the application tape you can stop and push them back onto the wall.



STEP LADDER



2 PEOPLE



TAPE MEASURE



PENCIL



MASKING TAPE



SCISSORS

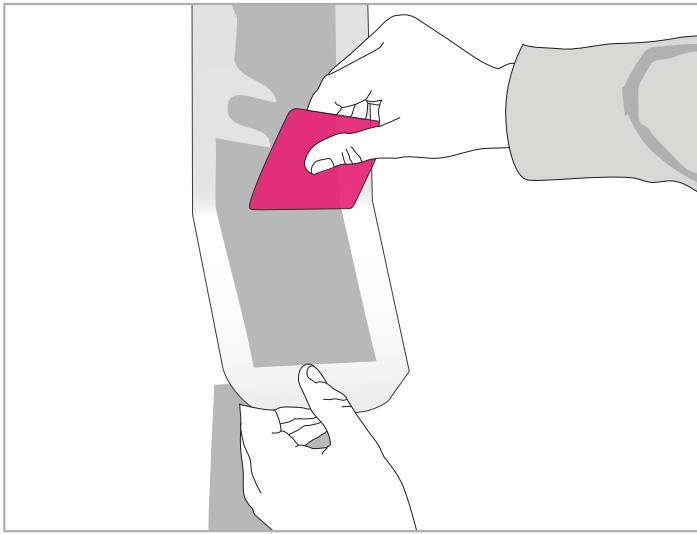


SQUEEGEE



SPIRIT LEVEL

Please note: If you have recently painted your wall you will have to wait 4-6 weeks for the paint to fully cure.



Step 10: The join

Now the bottom section of the tree is applied the middle section needs to be adhered.

Before you begin check that you are happy with how the two parts meet.

Start by removing the tape that was holding the middle part out of the way. Now whilst holding the sticker above the hinge repeat steps 6 to 8.



STEP LADDER



2 PEOPLE



SQUEEGEE



Step 11: Repeat steps 6-9

Repeat steps 6-9 for the final part of the trunks. Add the branches within your pack to complete the trees.

Now that all of your trees are applied you can start to personalise your scene by placing your leaves and birds where you like.



Step 12: The big reveal

Small amounts of bubbling may occur after the graphic is on the wall. If this happens all you need to do is pop them with a small pin and smooth the area with a finger.

Woo hoo, you now have a completed work of art!

At Vinyl Impression we love to see pictures of all our customers' handy work and ask if you could share your snaps with us.

Email them to hello@vinylimpression.co.uk

Facebook: [vinylimpression](https://www.facebook.com/vinylimpression)

Twitter: [@vinylimpression](https://twitter.com/vinylimpression)



STEP LADDER



2 PEOPLE



TAPE MEASURE



PENCIL



MASKING TAPE



SCISSORS



SQUEEGEE



SPIRIT LEVEL

