

• ABOUT US •

Driven by the passion for innovation, we at Dr Trust endeavour to provide our customers with the latest medical inventions with an objective to promote good health and wellness all around the world. All the medical devices and health monitors provided by Dr Trust are supported by accurate, latest and ground breaking technologies, innovated at our headquarter in NY, USA. All our products adhere to the most stringent CE and FDA guidelines and are strongly recommended by doctors and health practitioners. Our products are designed in the utmost exemplary ways to ensure that their accuracy and convenience are unrivalled. The ease of their use and operation makes them even more suitable for users of all age groups.

Dr Trust strives to enhance the quality of lifestyle by providing with the most trusted and innovative health care and wellness products. Being a renowned global leader in health care products, Dr Trust ensures that our technically efficient team works dynamically and tirelessly to provide the best of the medical devices to our clients. The products that we have to offer are suitably designed for use at homes, laboratories and hospitals.

Our ground breaking solutions allow you to monitor your health in the easiest ways possible. In today's era when all of our lives are too hassled to handle, it becomes a bit difficult to pay attention to our health. But it has now become easier with the coming of the monitoring devices which can be conveniently used at homes and even on the go.

We bring to you a variety of best self medical devices, trusted and used by Doctors, medical professionals and home users all over the world.

Dr Trust Smart Body Fat Scale - 505

• QUICK START GUIDE •

Step 1

Download the "Dr Trust Scale Connect" app and login.

Step 2

Open the App and complete your registration as a user.

Step 3

Touch on "Go" to turn Bluetooth ON and start pairing your smart phone with scale.

Step 4

Step on the scale lightly and touch the "Click to Pair" icon.

Step 5

Stand on the scale again and click "Go" to begin measurement.

Note:

It will work as an ordinary weighing scale when you stand on the scale.



● OVERVIEW ●

The Dr Trust Smart Body Fat Scale 505 is easy to use. It calculates the values for body fat percentage, metabolism, skeletal muscle percentage, and visceral fat level correctly. It also calculates the Body Mass Index (BMI) and body age and body weight as well. The scale is a high precision strain gauge sensor system with a high-performance CPU to make accuracy. It is intended for use in the home for measuring weight and body fat mass generally in healthy adults 18 years of age or older. It comes with low battery and overload indications. While its APP account will allow you to store data for up to eight personal profiles with time & date.

● MEASURING BODYWEIGHT ONLY ●

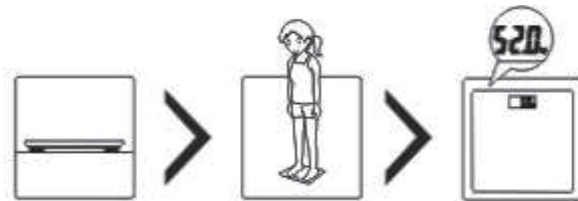
When you stand on the scale, it will measure your body weight.



Instructions

1. Place the scale on a hard and flat surface.
2. Carefully step on the platform of scale and stand as stationary as possible until the weight reading is shown and locked on the LCD.

3. The display will show your weight measurement with room temperature.
4. The scale will be automatically off without further operation.



Note: Do not use it on the carpet or soft surface.

● MEASURING BODY COMPOSITION ●

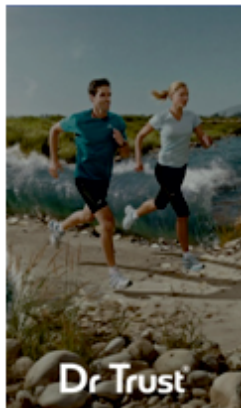
OPERATING INSTRUCTIONS

Download App

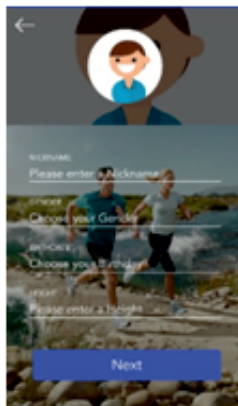
Download "Dr Trust Scale Connect" app from Apple Store or Google Play.



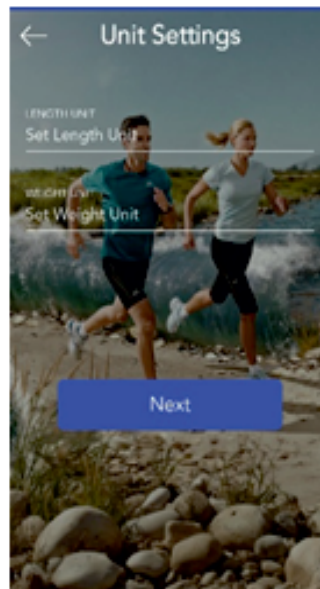
1. LO- When battery is low the LCD indicates "Lo".
2. Err- Maximum capacity exceeded. When the scale is overloaded (over 180kg/396lbs).



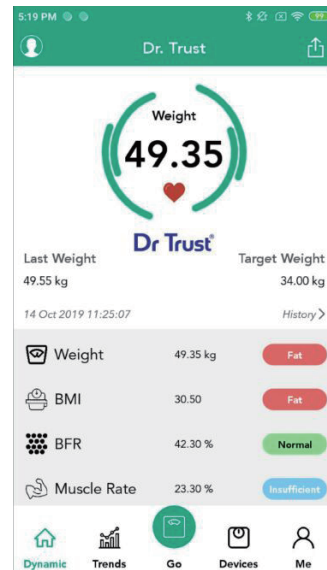
Pairing the Scale with Your Smartphone



Open the App and enter your own ID, then personal information to complete your registration as user.

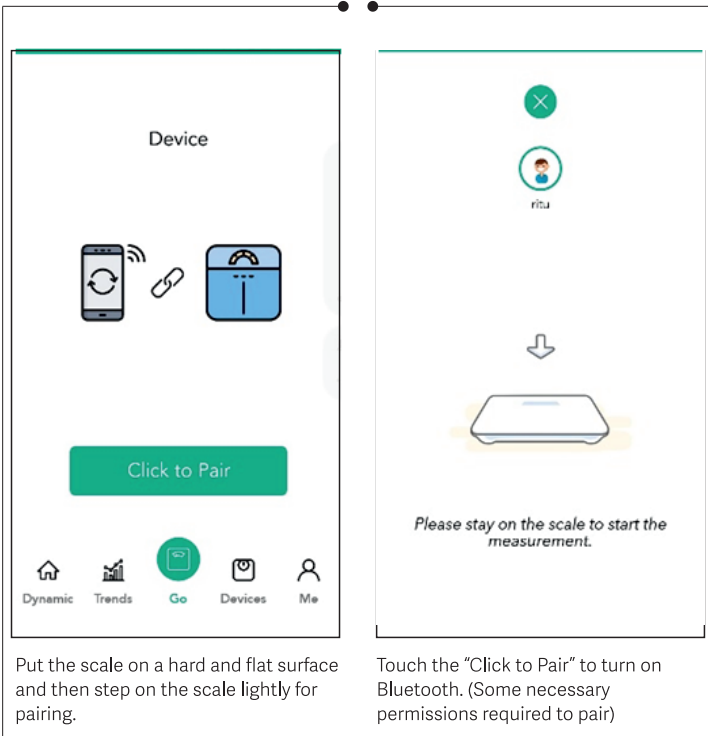


Choose length and weight units as per your choice in "Unit Settings".



Click on "Go" to start pairing your smart phone with scale.





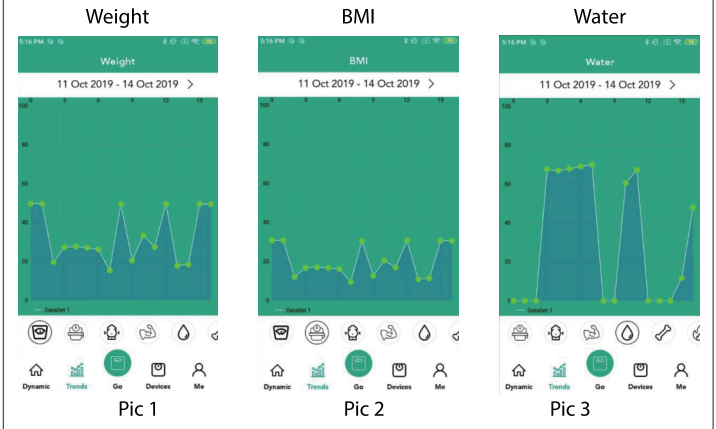
Put the scale on a hard and flat surface and then step on the scale lightly for pairing.

Touch the "Click to Pair" to turn on Bluetooth. (Some necessary permissions required to pair)

After pairing, stand on the scale again (do not move) and click "Go" to begin measurement.

INTELLIGENT FEATURES

View Results, Trend Analysis, Share & Synch Data
 Trend Analysis: Click the Trend icon at the bottom to view historical results and track your progress.



Pic 1

Pic 2

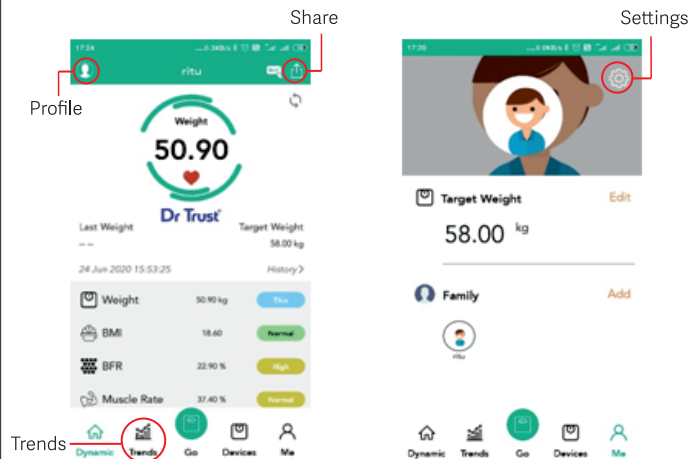
Pic 3



Sync Button: Press the sync button located at the top of the right corner and follow instructions to sync with Apple Health/ Google Fit.

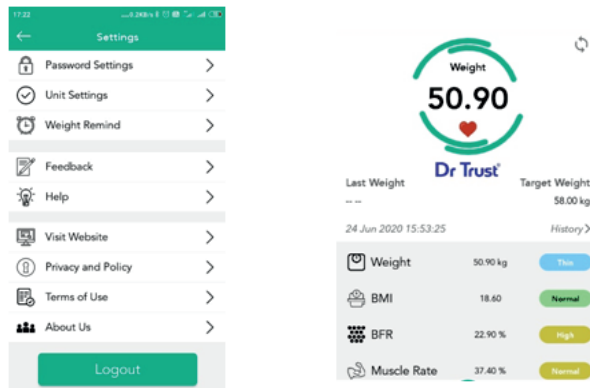
Share Data: Hit the share button in the top of the right corner to share your results with fitness trainers, nutritionists, doctor, family, or friends via email/WhatsApp.

Adding Users: Click the Profile icon and then press the Add button. Follow instructions to add new users.



Reminder: The App reminds you when it is time to take your next weight or body composition measurement. To set alarm, click the settings icon on the top of the right corner and then press "Weight Remind" to set alarm for your next measurement. You can also set multiple reminders for taking weight measurements more than once a day, or at different times depending on the day of the week.

Range of vitals? This body composition scale also provides a comprehensive understanding of your body composition. It also displays your targeted weight with the insight of other comprehensive vitals.



● POWER SUPPLY ●

It is powered through a 500mAH rechargeable battery. It must be recharged when the weight machine starts showing an Error message while taking weight.

● ERROR CODES ●

Overload and Low Power Indication

1. LO- When the LCD indicates "Lo", please charge the scale with a USB cable.
2. Err- Maximum capacity exceeded. When the scale is overloaded (Over 180kg/396lbs) "Err" will appear on the screen.



● COMMON TROUBLESHOOTING ●

- Always step on to the scale with bare, dry and clean feet touching the electrodes.
- Please ensure your Android Smart phones and Dr Trust app both are updated to the latest versions.

- Please ensure that Bluetooth is activated on your smartphone and the Dr Trust Scale Connect app has been given necessary permissions to work. (you can check this in the Dr Trust scale connect app settings.)
- Please do not try to connect to the scale directly from Bluetooth settings, it connects within the app only.
- You need to pair the scale for the first time only.
- Stand on the scale for a few seconds to get your complete body analysis details on your app.
- Get off the scale when your results are displayed on the screen.
- Pair the scale by following instructions on the app and get off the scale and wait for it to turn off.
- Please do not use this product if you are pregnant or have a pacemaker.

Faulty Measurement

- Measurement fail indicates "Err1", for below 2 conditions:
- Body fat percentage is less than 5% or over 50%.

● MAINTENANCE AND STORAGE ●

Please use soft tissue or a damp cloth with neutral detergent, alcohol, or glass cleaner to clean the surface of the scale. Avoid using soap or other chemicals as they may lead to damage. The storage environment must be dry. Also, keep it away from water, heat, and extreme coldness.



505

CAUTION

- Please take off shoes and socks and keep your bare feet in touch with electrodes for measuring body composition (Body Weight, BMI, BFR, Muscle, Moisture, Bone mass, BMR, Visceral fat, Protein rate, Body age, Standard weight and Body Fat, etc.) accurately
- Do not place the scale on wet and slippery surfaces and should not stand on it with wet feet to avoid slipping.
- If the scale malfunctions, please check the charging. If necessary, please check it immediately.
- The scale is a high precision measuring device. Never jump or stomp on the scale.
- Please handle it carefully to avoid breaking when moving it.
- When weighing both feet must be in the center of scale to avoid tipping of device.
- When battery charging is over, immediately recharge it.
- The scale platform may be slippery when wet, thus please make sure both the scale platform and your feet are dry before use.
- Keep the monitor out of the reach of young children.
- Do not use mobile phones, microwave ovens, or other devices that generate strong electrical or electromagnetic fields near the monitor.
- Do not step on the edge of the display area of the measurement platform. The monitor may tilt. The display unit may be damaged.
- Do not place the monitor on a carpet, mat, or cushioned floor as it may result in an incorrect measurement.
- Do no avoid warning symbols indicates a potentially hazardous situation as this may result in minor or moderate injury to the user or patient or damage to the scale.

- This unit is intended for home use only. It is not intended for professional use in hospitals or other medical facilities. This unit does not support the standards required for professional use.
- Do not submerge the device or any of the components in water.

Note: Persons with pacemakers and other medical equipment are not professional athletes, pregnant women, or others, who are a few special recommended to use this device. In body composition analysis of provisions, result can be error or may not as accurate.

PRODUCT SPECIFICATIONS

Product Dimensions	302 X 240 X 2 mm
Product Weight	1.36 kg
Functionality	Auto ON & Auto OFF
Body	Tempered glass and ABS
Limit of Measurement	5 kg - 180 kg/ or 396 lb
Units of Weight Measurement	kg /lb/ pound
Wireless Connection	Bluetooth
Operating temperature	0 ° C ~ 40 ° C



Battery	Rechargeable through micro USB
Hardware Requirements	OS Android 4.4 / iOS 8.0; and above, Supports Bluetooth 4.0

Note: The scale would be switched on when weight of 5 kg or more is placed on it.

Disclaimer: The scale is for family use only. Body Weight, BMI, BFR, Muscle, Moisture, Bone mass, BMR, Visceral fat, Protein rate, Body age, Standard weight, Body Fat measurements are for reference only. You should consult a doctor when you undertake any diet or exercise program on it.

CUSTOMER SUPPORT

CONTACT ADDRESS USA

Nureca INC.USA
276 5th Avenue, Suite 704-397,
New York (NY) - 10001, USA

INDIA

Corporate Office (Mumbai)

Nureca Limited
128 Gala Number Udyog Bhavan,
1st Floor Sonawala Lane, Goregaon East
Mumbai City Maharashtra 400063

Contact us

India: +91-7527013265 / +91-9356658436

Website: www.drtrust.in

Corp Website: www.nureca.com

Email: customercare@nureca.com

Connect with us on social networks

Facebook: @drtrust

Instagram: @drtrustisin

Youtube: NurecaUsa

COPYRIGHT©2021 NURECA LTD ALL RIGHTS RESERVED



Scan to View
Product Demo Video
www.drtrustusa.com/505