

## • ABOUT US •

Driven by the passion for innovation, we at Dr Trust endeavour to provide our customers with the latest medical inventions with an objective to promote good health and wellness all around the world. All the medical devices and health monitors provided by Dr Trust are supported by accurate, latest and ground breaking technologies, innovated at our headquarter in NY, USA. All our products adhere to the most stringent CE and FDA guidelines and are strongly recommended by doctors and health practitioners. Our products are designed in the utmost exemplary ways to ensure that their accuracy and convenience are unrivalled. The ease of their use and operation makes them even more suitable for users of all age groups.

Dr Trust strives to enhance the quality of lifestyle by providing with the most trusted and innovative health care and wellness products. Being a renowned global leader in health care products, Dr Trust ensures that our technically efficient team works dynamically and tirelessly to provide the best of the medical devices to our clients. The products that we have to offer are suitably designed for use at homes, laboratories and hospitals.

Our ground breaking solutions allow you to monitor your health in the easiest ways possible. In today's era when all of our lives are too hassled to handle, it becomes a bit difficult to pay attention to our health. But it has now become easier with the coming of the monitoring devices which can be conveniently used at homes and even on the go.

We bring to you a variety of best self medical devices, trusted and used by Doctors, medical professionals and home users all over the world.

## Dr Trust Portable Mesh Nebulizer – 404

### • QUICK STARTUP GUIDE •

#### Step 1

Put two batteries in into the device.

#### Step 2

Put the prescribed medication into the medication chamber and close the lid.

#### Step 3

Insert the mesh cup on the top of the device and attach the mouthpiece.

#### Step 4

Turn the power ON/OFF button to start treatment.

#### Step 5

Turn it off once the medication is finished.



## ● INTRODUCTION ●

The Dr Trust Portable Mesh Nebulizer-404 can deliver medication effectively to the patients suffering from Chronic Obstructive Pulmonary Disease (COPD) such as emphysema and chronic bronchitis, or other respiratory diseases that are characterized by obstruction to air flow. Small, compact, and portable device comes with a battery system and allows to administer treatment on the go. It is Intended for use in a medical facility, such as Hospital, clinic, and doctor's office, in a room of general household, and in open-air environment with a roof.

### Intended Users

Adult and pediatric patients suffering from asthma, Chronic Obstructive Pulmonary Disease (COPD) such as emphysema and chronic bronchitis, or other respiratory diseases that are characterized by obstruction to air flow.

## ● SAFETY PRECAUTIONS ●

### Warning!

- Please follow a doctor's instructions on choosing the correct type, dose, and regimen of medicine.
- Do not place any liquid in the medication chamber that is not prescribed by a physician.
- This is a single patient device. Do not allow multiple patients to use the same device.

- If you are using the nebulizer for the first time after purchasing it or you have not used it for a long time, please clean the nebulizer parts.
- After each use, please clean the medication chamber, and mouthpiece with distilled water. Dry the cleaned parts immediately and store in a clean place.
- The inhalation mask must be cleaned with distilled water and dried prior to first use.
- These parts of mouthpiece and masks can be reused after disinfecting treatment.
- Do not plug or unplug the AC adapter with wet hands.

### Caution

- Please clean the nebulizer parts carefully after each use.
- If you fill water in the medication chamber, the nebulizer cannot be turned on. The distilled water can be used for cleaning the medication chamber under "clean process".
- Please do not allow Q-tips or any foreign objects to come in contact with the mesh of the medication chamber.
- Do not drop the nebulizer.
- Do not mix different types of batteries.
- Do not store or carry a nebulizer with liquid medication or water remaining in it.
- Do not immerse the nebulizer main unit in water.
- Keep the device out of reach of infants and children. Children should use only under adult's supervision.



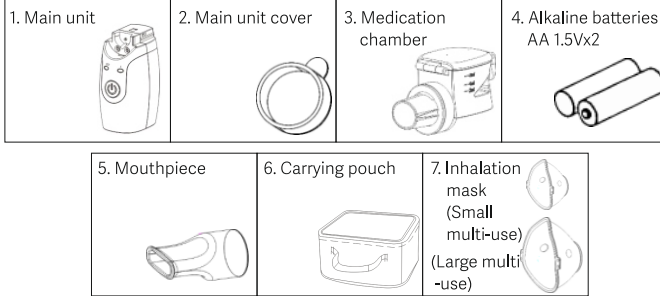
- If device does not shut off automatically when medication is depleted and gives off a high frequency sound. Press the "START/STOP" button to turn the power off immediately to avoid the mesh breaking.

## PRODUCT FEATURES

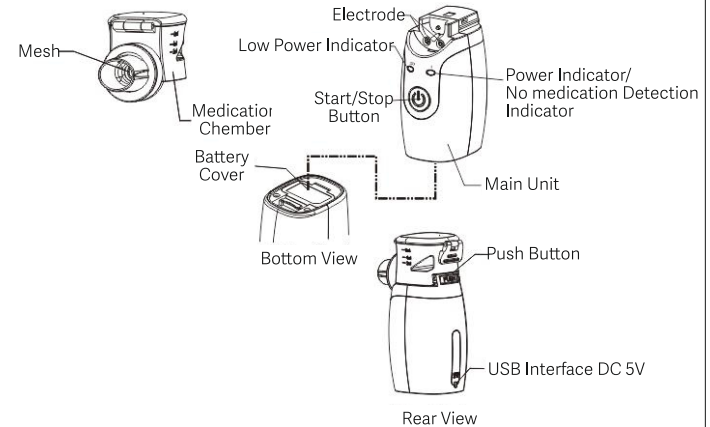
- Pocket-sized and easy to carry.
- Low power consumption and low residual medication volume.
- Mesh nebulizer can function properly for a short time after being rotated to any angle. It can nebulize properly for about 15 seconds. (Time varies depending on specific medication types.)

## COMPONENTS

The product contains the following components.



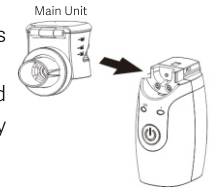
## Components Names and Functions



## USAGE

### 1. Attaching Medication Chamber to Main Unit

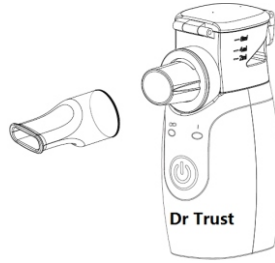
- Please ensure that the medication chamber is attached correctly.
- Always keep the electrodes of main unit and medication chamber clean; otherwise, it may not function properly.



Attachment of the medication chamber is complete while it gives off a sound "Click".

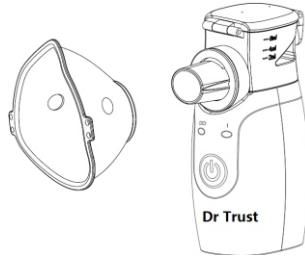
## 2. Attaching the Mouthpiece

Please securely attach the Mouthpiece to main unit.



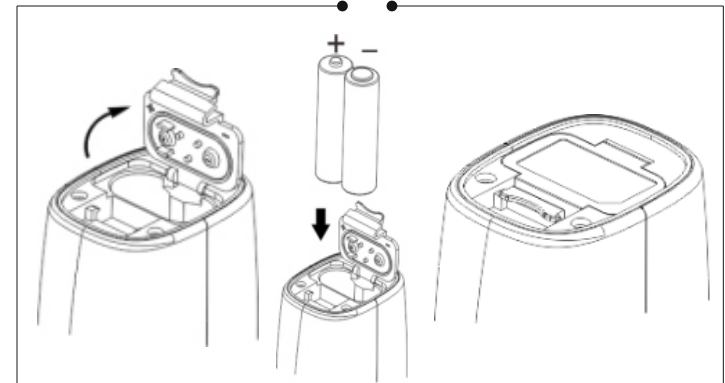
## 3. Attaching Inhalation Mask

- Inhalation mask for children is S size.
- Inhalation mask for adults is L size.
- Attach the right size mask as per your needs.



## 4. Batteries Installation

Please open the battery cover and insert 2 "AA" alkaline batteries in a way that the polarities are oriented correctly and subsequently close the battery cover.



## 5. Battery Replacement

- If the low-power indicator with orange color is lit to flash 2Hz, it means battery is low. But Nebulizer still can be used around 30 minutes continuously.
- If the low-power indicator with orange color lit constantly (orange color), it means that extremely low power caused the nebulizer not to work. Please immediately replace with new alkaline batteries.

### Attention!

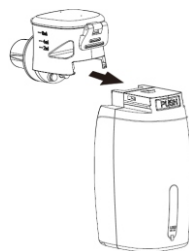
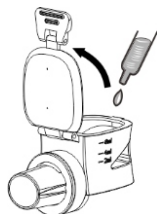
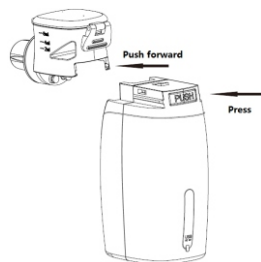
Do not mix different types of batteries.

Battery life may be different depending on type of the batteries used.



## 6. Adding Medication in the Medication Cup

- Firstly, detach the medication chamber from the nebulizer. Press the PUSH button on the rear side of the main unit and push the medication chamber towards the front side of the main unit.
- Fill the medication as shown in the figure. (Recommended fill volume: Approx. 8 ml maximum / 0.5 ml minimum). Please close the cover of the medication chamber.

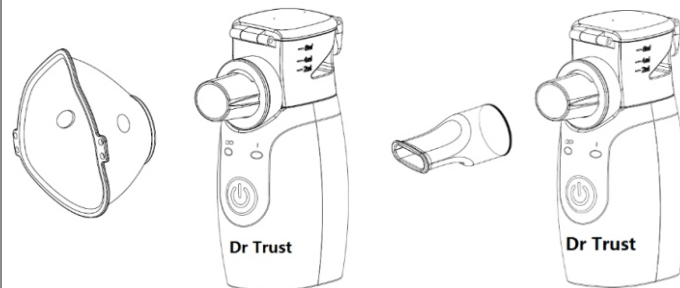


## 7. Re-attaching medication chamber to the main unit

Attach the medication chamber while it gives off a sound "Click".

## 8. Attaching Mouthpiece and Inhalation Mask

- Please securely attach the Mouthpiece to main unit.
- Inhalation mask for children is S size.
- Inhalation mask for adults is L size.



## 9. Turning on the Power

Press the "START/STOP" button, and the power indicator (green) will light constantly. And medication chamber will be lit with blue color constantly.

### ! Attention

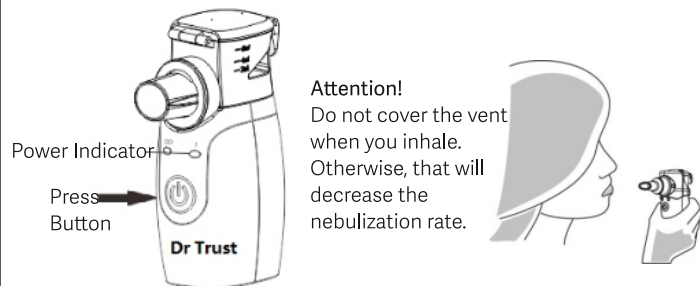
- If there is no medication inside the medication chamber, and the power is turned on: the nebulizer's power indicator (green) will be turned on around 0.5 second, then the power indicator will be changed to orange color immediately. After 8 seconds, medication chamber light and shut off power automatically.



- In the operation while medication was depleted: the power indicator will be changed to orange color immediately and turned-off medication chamber light, then shut off automatically.
- The longest nebulization time is: 30 minutes.
- Pure water is not applicable for use: if you fill pure water in the medication chamber, the nebulizer cannot be functioned well.

## 10. Inhalation

Hold the nebulizer in your hand stably and start inhalation.



### Attention!

- If the device detects no medication in medication chamber, it will shut off automatically.
- If the device does not shut off automatically when medication depleted, press the "START/STOP" button to turn the power off immediately to avoid the mesh breaking. Please go to page 18 for

- During the treatment, you may adjust the nebulizer to any angle. However, make sure the medication stays in contact with the mesh; otherwise, the nebulizer will shut off automatically after approximately 15seconds.
- When the medication is about to be depleted, it is recommended that you tilt the nebulizer (the buttons side) slightly toward you. This allows the remaining medication to contact the mesh to nebulization.
- Do not shake the nebulizer strongly in the usage. Otherwise, the nebulizer may shut off automatically.
- Provide close supervision when the nebulizer is used by children.

## 11. Turning off the Power

- The nebulizer shuts off automatically after the medication is depleted.
- If you wish to halt the treatment, press the "START/STOP" button to turn the power off. The power indicator light will go out.

## • CLEANING •

After each use, make sure to clean the nebulizer instantly with the mineral water before storing or carrying.



## 1. Cleaning the Remaining Medication

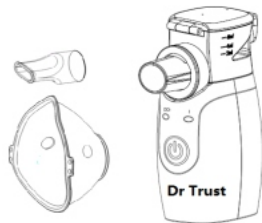
- Open the cover of the medication chamber and discard the remaining medication.
- Pour a small amount of mineral water into the medication chamber and close the cover.
- Press and hold for 3 seconds “START/STOP” button, the power indicator LED (orange) will be flashed, and medication chamber will be lit on blue color. Go to “cleaning process” to nebulize the water for 2 minutes to remove the residual medication in the medication chamber until the mineral water depleted.

### Attention!

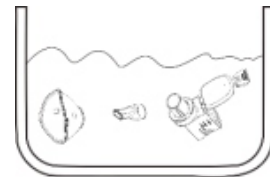
- If the device gives off the high frequency sound and the mineral water is depleted, please release the “START/STOP” button to turn the power off. Otherwise, the mesh of the medication chamber may be broken.
- Please clean the remaining medication after each use. Otherwise, the mesh of the medication chamber may become blocked.

## 2. Cleaning All Accessories in the Distilled Water

Remove the medication chamber, and inhalation mask or mouthpiece from the nebulizer.



Clean the medication chamber, mouthpiece, inhalation mask with distilled water.

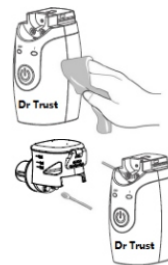
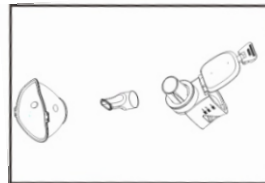


## 3. Drying the Cleaned Parts Thoroughly

After the parts are cleaned, dry with new gauze and air dry thoroughly.

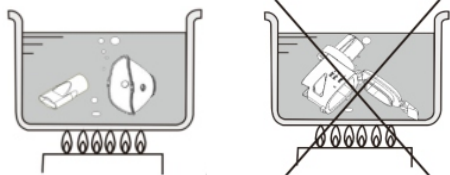
### Attention!

- Please do not dry with cotton or cloths of other materials; otherwise, dust or cloth fiber may be left on the mesh, causing the nebulizer to malfunction.
- Please do not allow Q-tips or foreign objects in contact with the mesh of the medication chamber.



## DISINFECTION

- Disinfect mouthpiece, and mask by boiling at 100°C for 3 minutes
- Please be careful, do not boil the medication chamber, or damage may occur.
- Dry it completely.



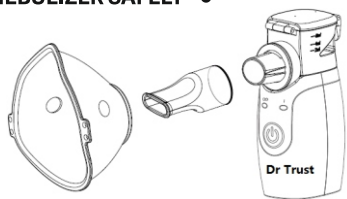
### Attention

- In the case of infectious illnesses, the device must be disinfected every day, or all attachments must be sterilized. You can also use alcohol or other common alcohol-based disinfectant sprays. Make sure that no disinfectant residues are left behind on the attachments to ensure safe inhalation when next used.

## CARRYING THE NEBULIZER SAFELY

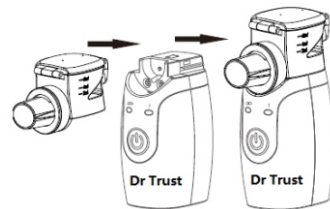
### 1. Dismantle the nebulizer

Please remove the mouthpiece and inhalation mask as shown in the figure.



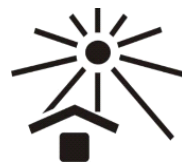
### 2. Put on the main unit cover

Please put on the main unit cover as shown in the figure. This will protect the nebulizer from possible damage during carrying.



### 3. Place the main unit and associated parts into the carrying pouch for carrying

Please put on the main unit cover as shown in the figure. This will protect the nebulizer from possible damage during carrying.



### Attention

- Please do not carry a nebulizer that still contains medication or water. The medication may leak out and damage or stain the nebulizer.

### Warnings:

- Please select liquid drug type, liquid drug dosage and liquid drug schedule under doctor's advice.
- Do not use it for other purpose.
- Do not use any other liquid drugs other than prescribed drug.





- Do not use the machine with distilled water, multiple-filtered purifier water or oil substance.
- Do not soak the main machine into water.
- Avoid water entering while cleaning the machine by washing.
- Always keep the main unit clean and dry after each use.
- Please soak the medication cup into purified water and wash it repeatedly after each time use.
- Always keep the medication cup dry after each time use.
- Please do not touch the mesh with hard, sharp objects or with fingers in case of malfunction.
- Please do not detach the USB plug in case of dust or water entering.
- The user shall maintain the device after each time use, especially keeping the electrodes dry and clean at the bottom of the medication cup and the upper side of the main machine
- The mesh is extremely fragile. Please do not clean or touch with cotton swabs, brushes, or fingernails! Please clean the medication cup after each time use.
- Do not store the nebulizer in an area with high temperature or humidity, or in direct sunlight.

### • TROUBLESHOOTING •

Please refer to the table below to troubleshoot any problems you may encounter when using the nebulizer.

Problems	Possible Causes	Solutions
Extremely low nebulization.	Medication chamber is not completely attached.	Re-attach the medication chamber correctly and restart the power.
	No contact between medication and mesh for more than 15 seconds.	Adjust the nebulizer's angle so the medication can come in contact.
	Mesh of medication chamber is clogged.	Clean the medication chamber. If it still cannot be used after cleaning, please replace with a new medication chamber.
	Electrodes on medication chamber are clogged with medication or water.	Clear the electrodes of clogged medication or water and restart the power.
	Electrodes on nebulizer and medication chamber are stained.	Remove the stains and restart the power.
After turning power on, power indicator lights for one second and then immediately goes out.	Medication chamber is not completely attached.	Re-attach the medication chamber correctly and restart the power.
	No medication in medication chamber.	Put in the medication in the medication chamber.
	No contact between medication and mesh.	Adjust the nebulizer's angle so the medication can come in contact.



Power indicator is not on and nebulizer is not nebulizing.	Electrodes on nebulizer and medication chamber are stained.	Remove the stains and restart the power.
	Batteries installed backwards.	Re-install the batteries in the correct orientation and restart the power.
	Low battery power.	Replace with new batteries and restart the power.
Power indicator is on and nebulizer is not nebulizing.	Incorrect connection of AC adapter to nebulizer.	Re-connect in the correct manner and restart the power.
	Low-power indicator is lit constantly, insufficient battery power, or battery has run out.	Replace with new batteries and restart the power.
	Rupture of mesh of medication chamber.	Replace with a new medication chamber and then put in the medication.
	Electrodes on medication chamber are clogged with medication or water.	Clear the electrodes of clogged medication or water and restart the power.
	Electrodes on nebulizer and medication chamber are stained.	Remove the stains and restart the power.
	Mesh of medication chamber is severely clogged.	If it still cannot be used after cleaning, please replace with a new medication chamber.

Nebulizer shuts off during usage.	Medication chamber is loosened and not completely attached.	Re-attach the medication chamber correctly and restart the power.
	Connection of USB cable to nebulizer is loosened.	Re-connect in the correct manner and restart the power.
	Medication has run out.	Put in the medication in the medication chamber.
	No contact between medication and mesh for more than 15 seconds.	Adjust the nebulizer's angle so the medication can come in contact.
Nebulizer does not shut off automatically while medication depleted.	Medication chamber is broken.	Hold the nebulizer in the hand stably.
		Replace with a new medication chamber and then put in the medication.
	Some type of medications for nebulization may be caused to produce a lot of foam in the medication chamber.	Clean the foam and restart the power.
	Electrodes on medication chamber are clogged with medication or water.	Clear the electrodes of clogged medication or water and restart the power.
	Electrodes on nebulizer and medication chamber are stained.	Remove the stains and restart the power.



	Medication chamber is broken.	Purchase and replace with a new medication chamber.
Overflow of medication from medication chamber.	Rupture of medication chamber or ageing of silicone ring.	Replace with a new medication chamber and then put in the medication.

### ● SPECIFICATIONS ●

Product Name	Dr Trust Portable Mesh Nebulizer 404
Method of Operation	Ultrasonic
Dimensions	Approx. 72 mm (L) × 40 mm (W) × 113 mm (H)
Weight	Approx. 98 g (Exclude batteries)
Power Supply	3V DC ("AA" 1.5V alkaline battery x 2) USB cable (Input: 100-240VAC, 50/60Hz, 0.2A Output: 5V DC, 1A)
Power Consumption	Approx. 1.2W
Vibrating Frequency	Approx. 113kHz
Nebulization Rate	>0.25 ml/min minimum
Particle Size	MMAD <5 µm
Recommended fill volume	Approx. 8 ml maximum Approx. 0.1 ml minimum

Battery Life	Battery Life Up to 3.0 hour if used continuously 10 days if used daily for 20 minutes. (2 times/day). (Use 2 "AA" (LR6) alkaline batteries)
Allows operation in all directions	upside down or tilted for up to 15 seconds
Detection if no medication or medication depleted	LED orange indicator turn-on 8 sec, then power off
Auto-power in working	30 minutes
Operating Conditions	10-40 °C (50-104 °F) , 15-93%R.H.
Storage Conditions	-20-70 °C (-4-158 °F) , ? 93%R.H.
Accessories	Main unit cover, mouthpiece, alkaline batteries, carrying pouch, instruction manual. inhalation mask(S), inhalation mask (L)

### ● CLEANING AND MAINTENANCE ●

The user shall maintain the device after each time use, especially keeping the electrodes dry and

clean at the bottom of the medication cup. The mesh is extremely fragile. Please do not clean or touch with cotton swabs, brushes, or fingernails!



- Do not soak the main machine into water.
- Avoid water entering while cleaning the machine by washing.
- Always keep the main unit clean and dry after each use.
- Please soak the medication cup into purified water and wash it repeatedly after each time use.
- Always keep the medication cup clean and dry after use.
- Please do not detach the USB plug in case of dust or water entering.

CONTACT ADDRESS

USA

Nureca INC.USA

276 5th Avenue, Suite 704-397,

New York (NY) - 10001, USA

INDIA

Corporate Office (Mumbai)

Nureca Limited

128 Gala Number Udyog Bhavan,

1st Floor Sonawala Lane, Goregaon East

Mumbai City Maharashtra 400063

Contact us

India: +91-7527013265 / +91-9356658436

Website: [www.drtrustusa.com](http://www.drtrustusa.com)

Email: [customercare@nureca.com](mailto:customercare@nureca.com)

Connect with us on social networks

Facebook: @drtrust

Instagram: @drtrustisin

Youtube: NurecaUsa

COPYRIGHT©2021 DR TRUST ALL RIGHTS RESERVED



Scan to View  
Product Demo Video  
[www.drtrustusa.com/404](http://www.drtrustusa.com/404)