

Superstar Cushion

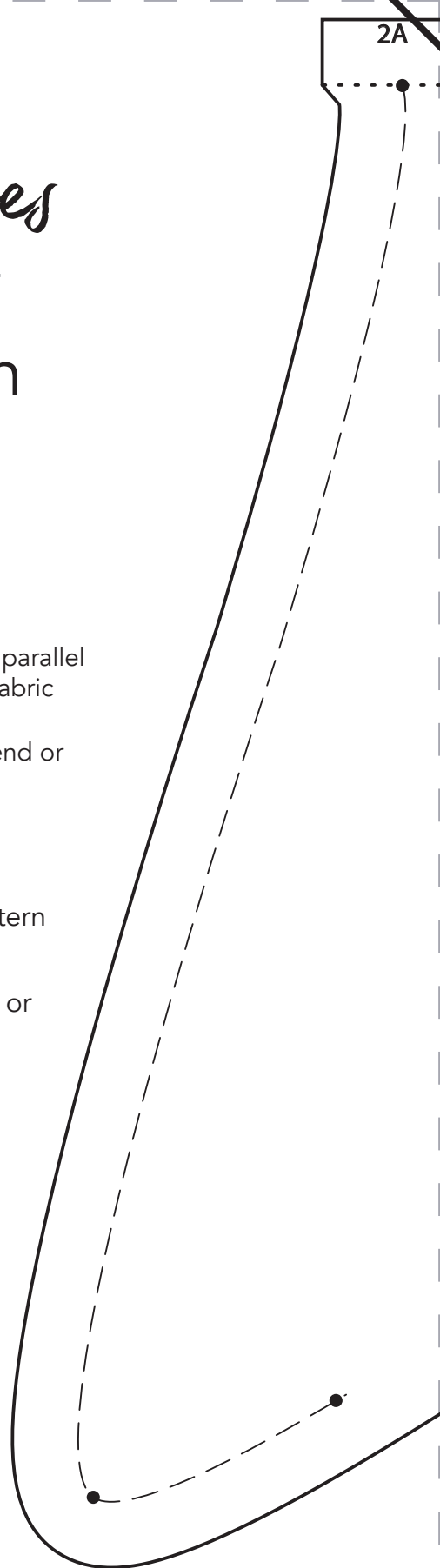
KEY

- cut line
- stitch line
- join line
- ↔ grainline - place this line parallel with the selvage on the fabric
- point - marks the stitch end or pivoting point

PLEASE NOTE:

- All seam allowances are 1cm and are included in the pattern unless otherwise instructed on a specific step.
- This pattern is for personal use only and its reproduction or commercial use is prohibited.

test square
5cm x 5cm
or
2" x 2"



1cm overlap for joining

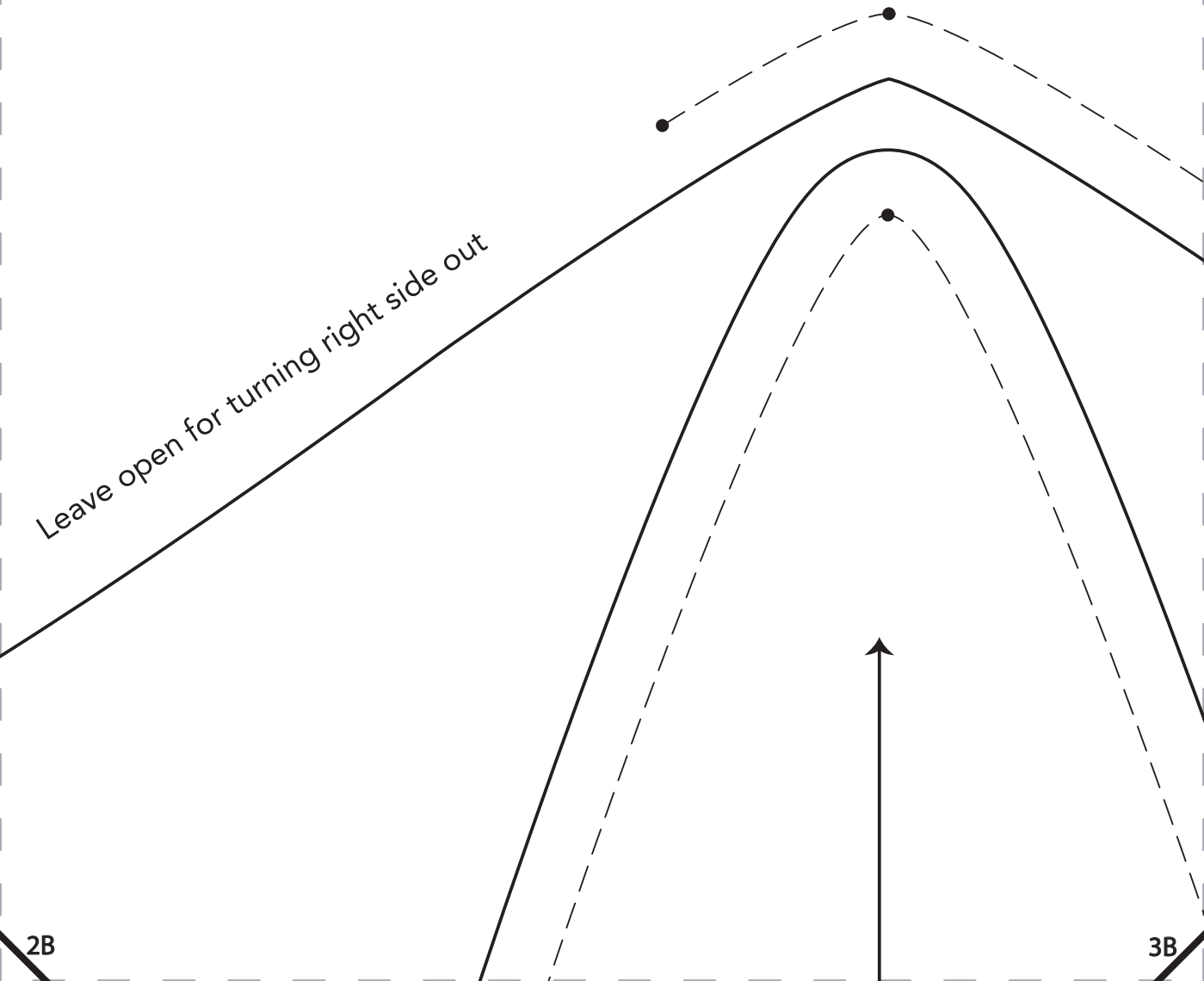
Join the two back pieces along this line

Shurata Davies
patterns 

Superstar Cushion

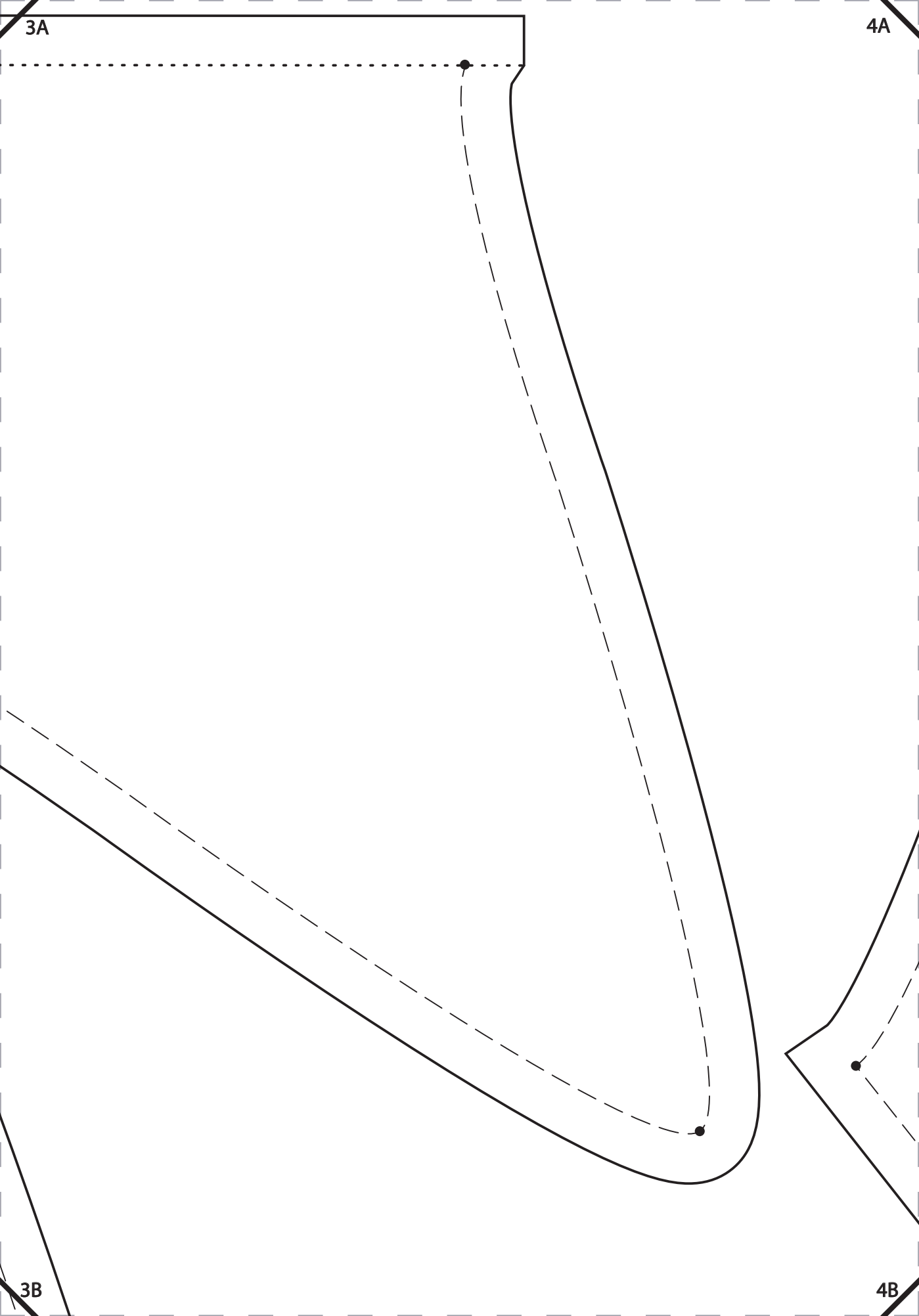
back

Leave open for turning right side out



3A

4A

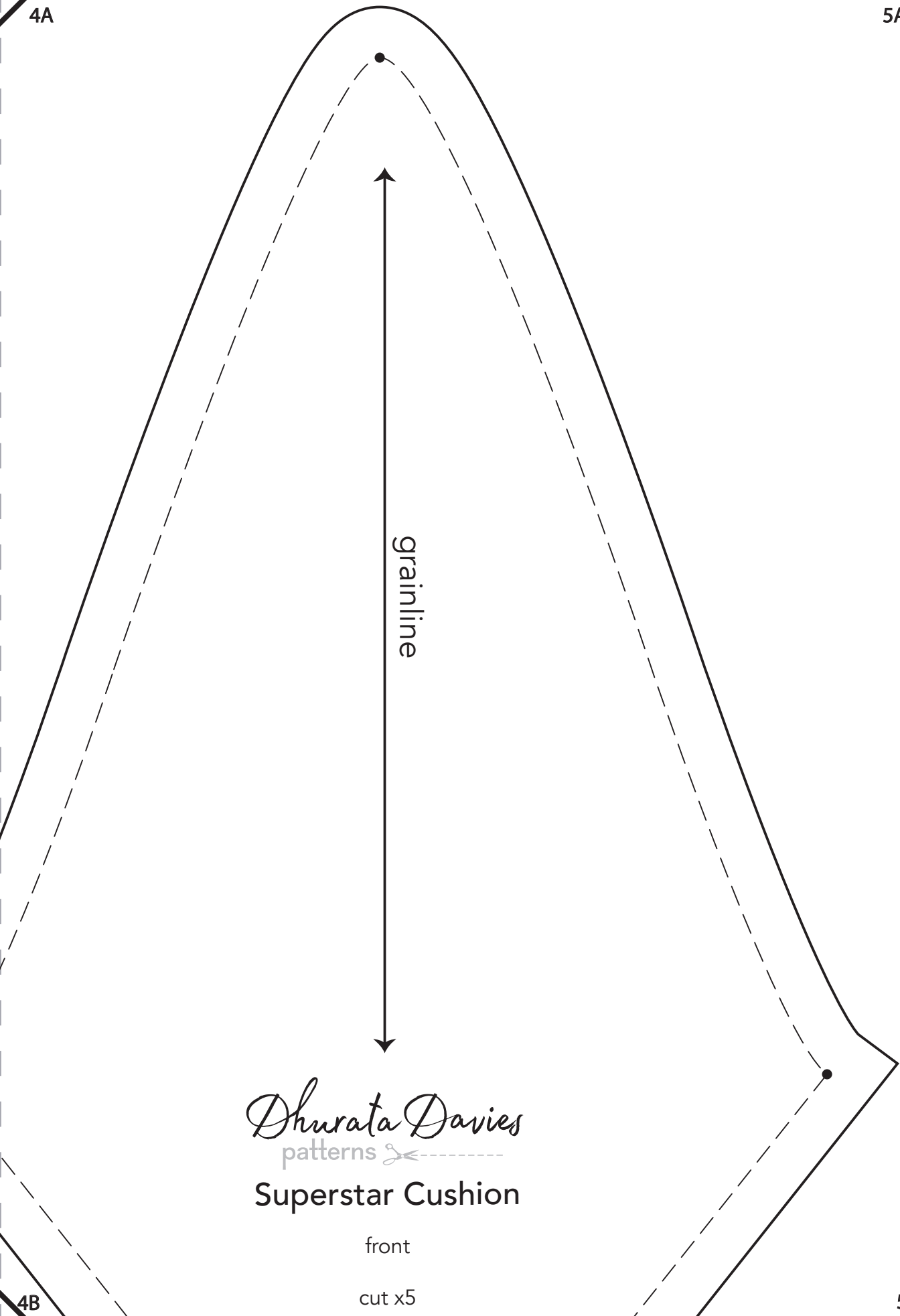


3B

4B

4A

5A



grainline

Dhurata Davies
 patterns ✂

Superstar Cushion

front

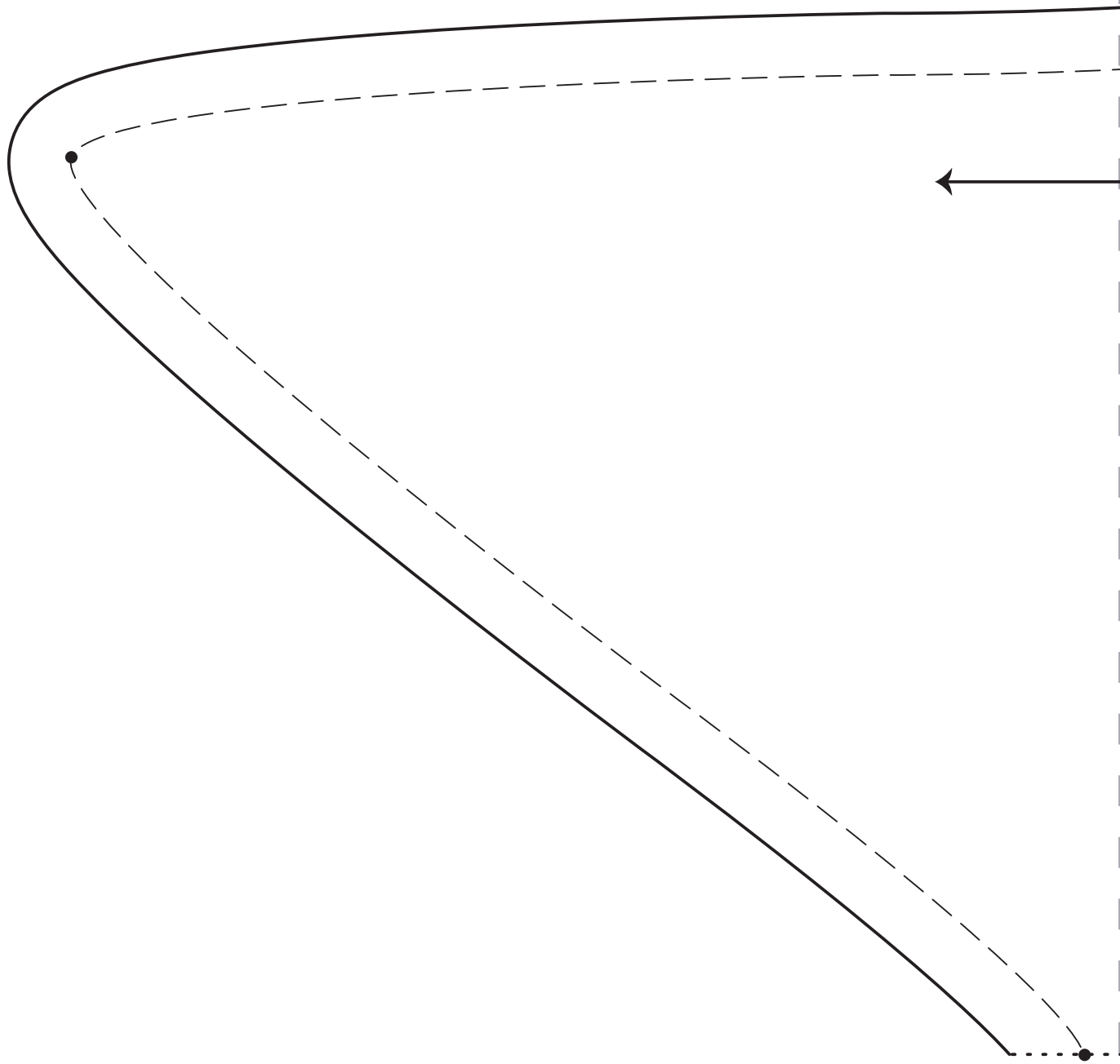
cut x5

4B

5B

1B

2B

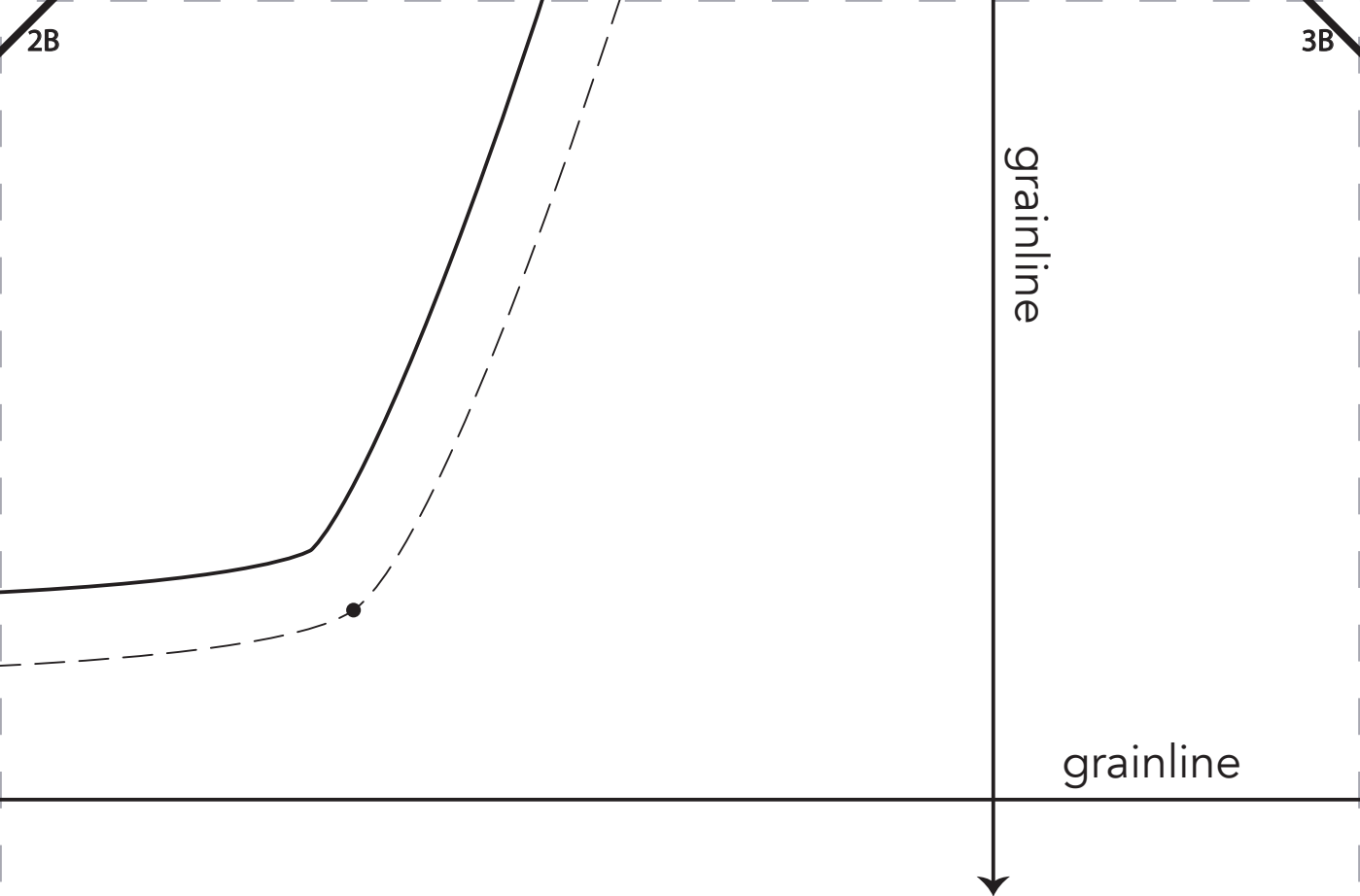


1C

2C

2B

3B



Dhurata Davies
 patterns  -----

Superstar Cushion

back

cut x1 after joining the bottom half

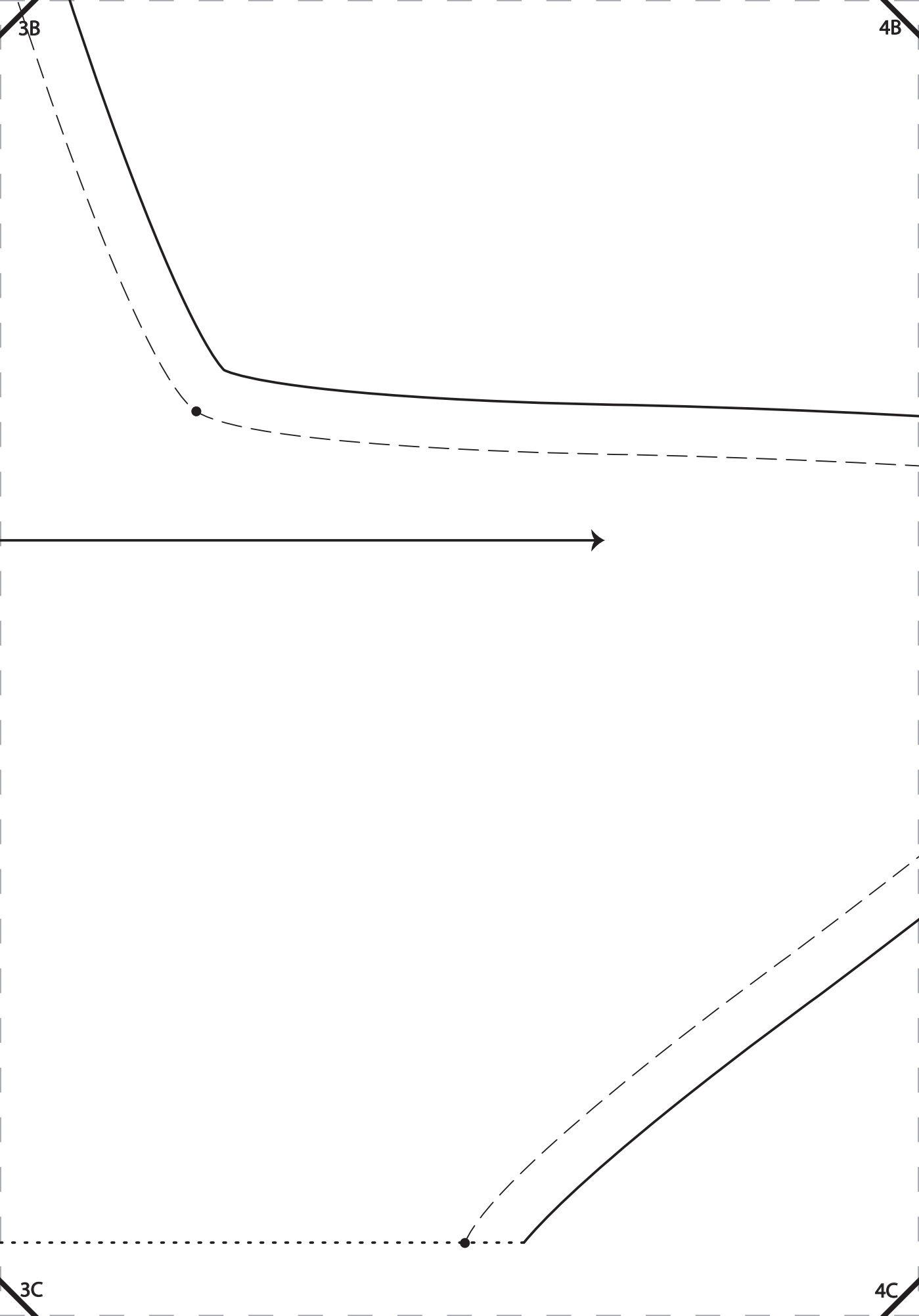


centre

Join the two back pieces along this line

2C

3C



3B

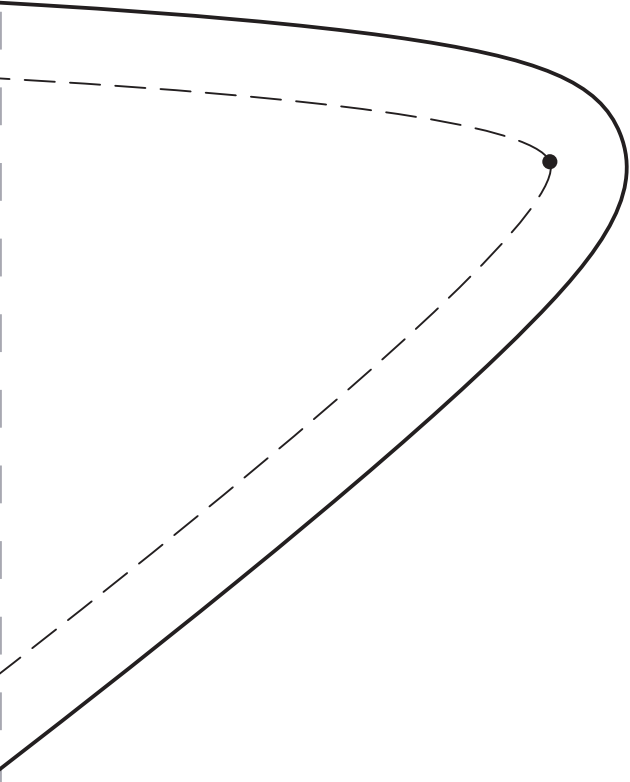
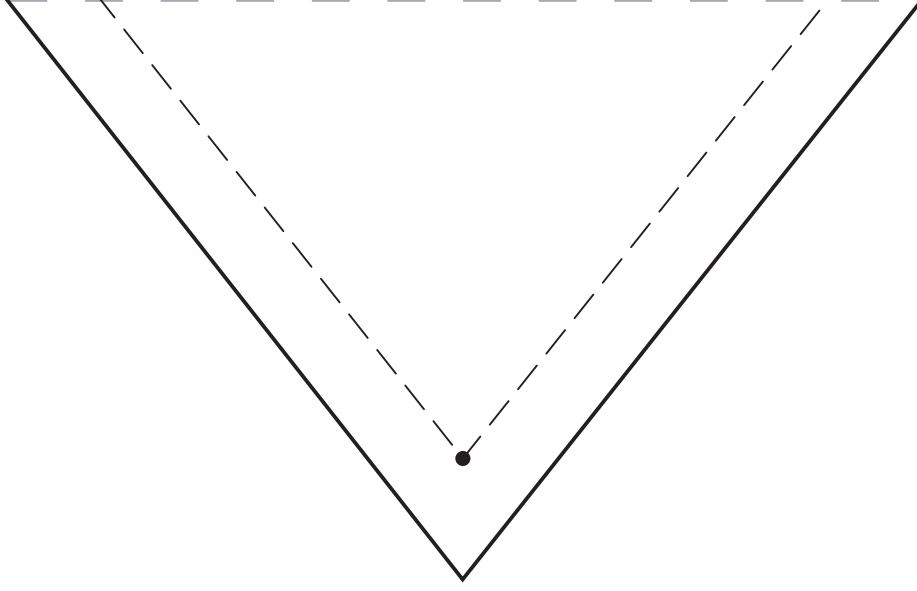
4B

3C

4C

4B

5B



4C

5C