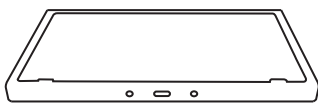




**TEMPERED GLASS**  
SCREEN PROTECTOR

# Instructions

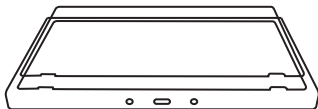
1.



**!** Please read all the steps before you start.

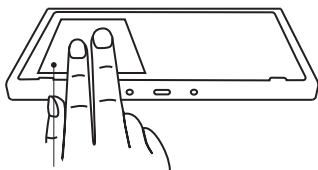
Remove the joy-cons and put the Switch on a flat surface.

2.



**DO NOT PEEL THE MASK OFF YET.** First, place the protector on the screen to check the spacing around all four sides.

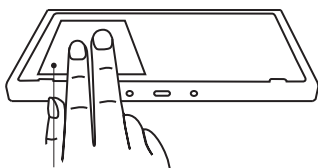
3.



Use the **wet wipe** to clean the screen.

Wet wipe

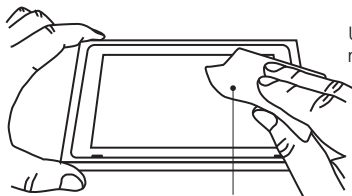
4.



Dry the screen with the **dry wipe**.

Dry wipe

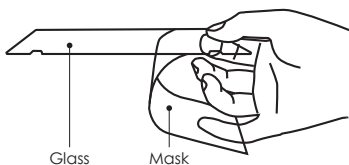
5.



Use the **dust absorber/sticker** to remove the residue.

Dust Absorbor

6.

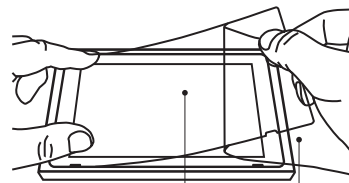


Peel off two-thirds of the back mask and hold the protector as shown in the picture. **To avoid dust adhering to the protector, work as quickly as possible.**

Glass

Mask

7.

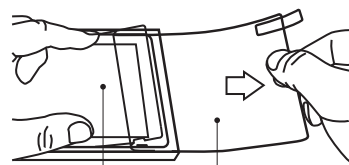


Stabilize the protector with one hand as shown in the picture, and align it with the edges of the screen. **If it is not straight, you can remove it and start again.**

Glass

Mask

8.

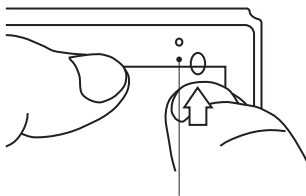


Once you are satisfied with the placement of the protector, remove the back mask. The protector will affix itself to the screen.

Glass

Mask

9.



Finally, squeeze air bubbles toward the edges. **Any remaining tiny air bubbles will shrink or disappear after 24 hours.**

Air Bubbles