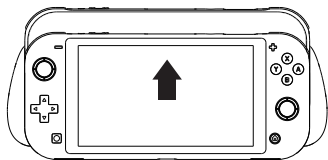




GripCase
for SWITCH Lite

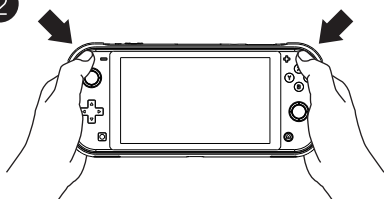
FITTING THE GRIPCASE LITE:

1



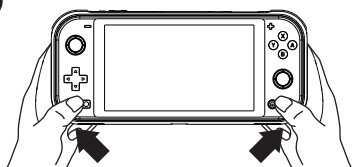
Put the SWITCH Lite into the GripCase starting with the ZR/ZL buttons.

2



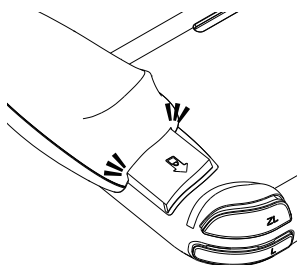
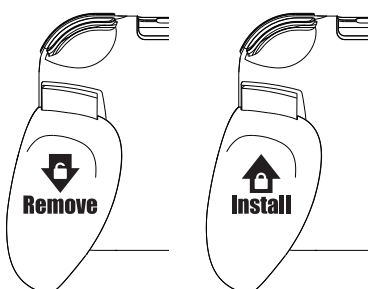
Press the ZR/ZL corners into the case.

3



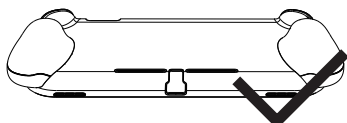
Press the bottom corners into the case.

SWITCHING GRIPS:

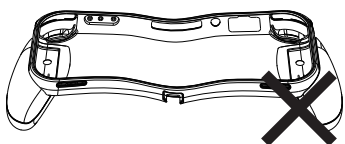


Please ensure the slider is fitted correctly.

STORING THE GRIPCASE LITE:



Please store GripCase front side down when not fitted on SWITCH Lite.



Please **DO NOT** store GripCase back side down when not fitted on SWITCH Lite or rest anything on GripCase.