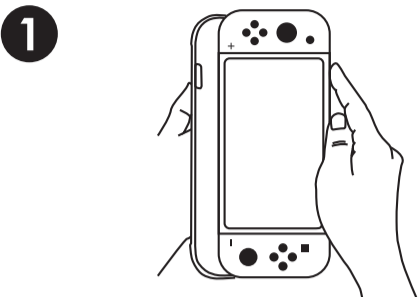


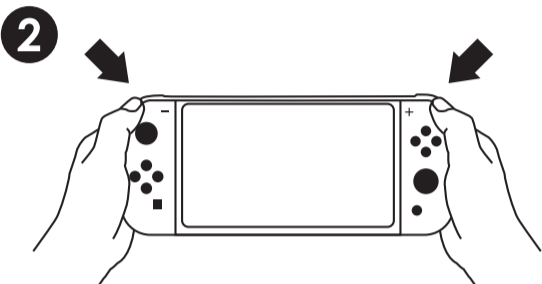


GripCase
for SWITCH

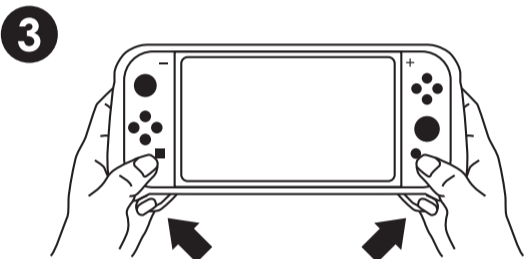
How to fit the GripCase:



Put the SWITCH into the GripCase, start from the side with the ZR/ZL buttons.

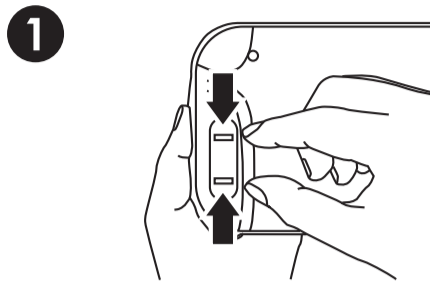


Press the ZR/ZL corners into the case.

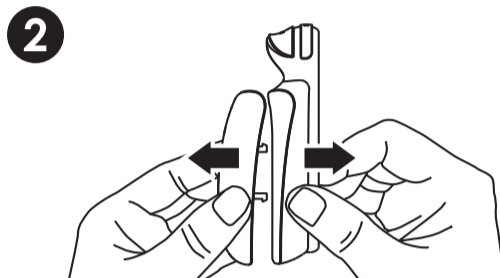


Press the bottom corners into the case.

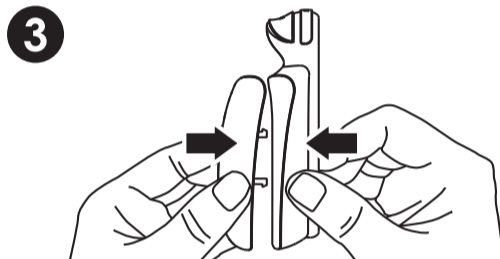
How to replace the grips:



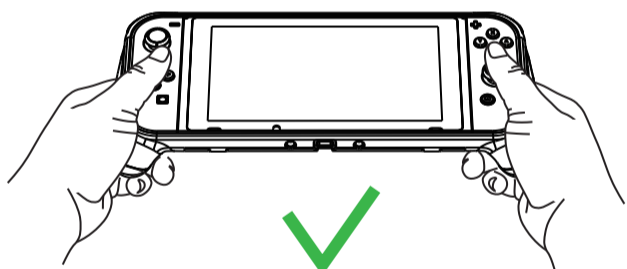
Press the buckle to unlock the grips.



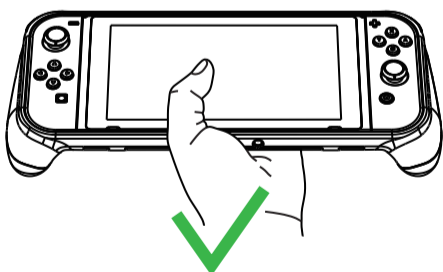
Remove the old grips.



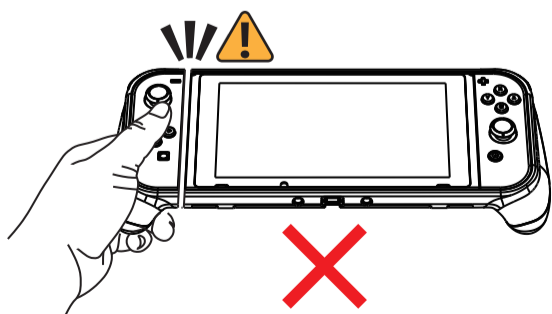
Mount the new grips.



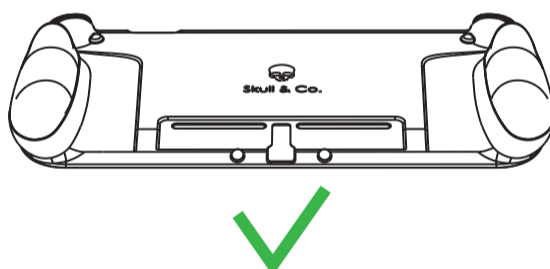
Please hold SWITCH with both hands.



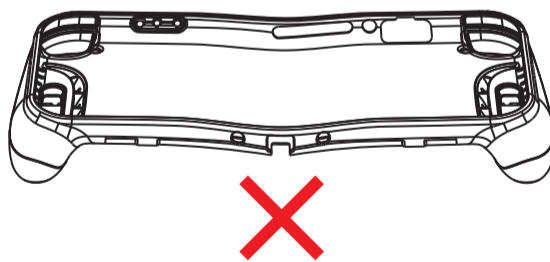
Or hold SWITCH in the center.



Please **DO NOT** hold only one side of SWITCH. SWITCH may **DROP** from the GripCase and it may also **DAMAGE** the junction between joy-con and pad.



Please store GripCase front side down when not fitted on SWITCH.



Please **DO NOT** store GripCase back side down when not fitted on SWITCH or rest anything on GripCase.