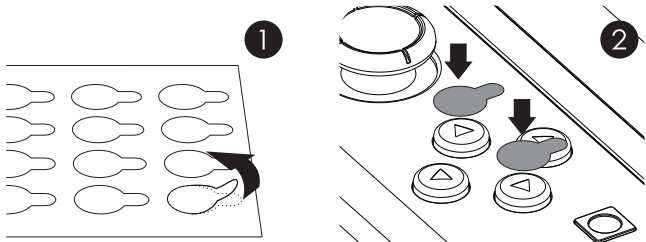


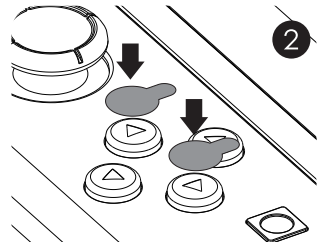


D-Pads
Button Caps
for Nintendo Switch Joy-cons
User Manual

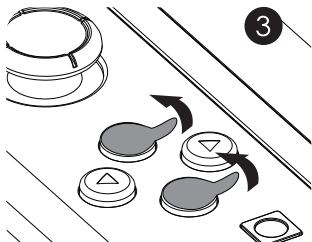
FITTING THE D-PAD



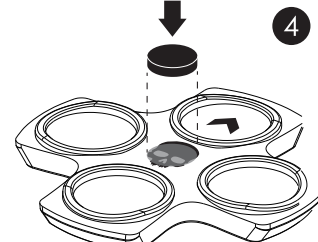
1 Remove the stickers from the back mask



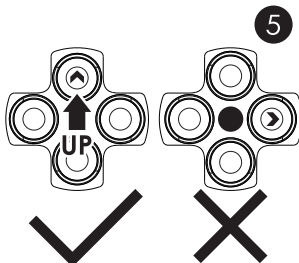
2 Attach the stickers to the buttons



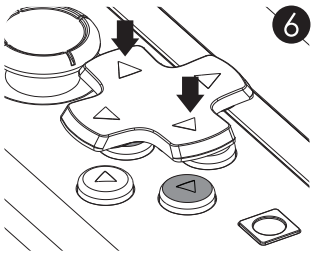
3 Remove the masks
! Only TWO STICKERS are required



4 Attach the **BLACK PAD** to the back of D-pad as a pivot

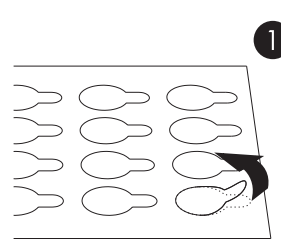


5 The **ARROW** on the back indicates direction

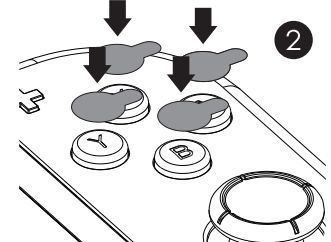


6 Attach the D-pad to the buttons

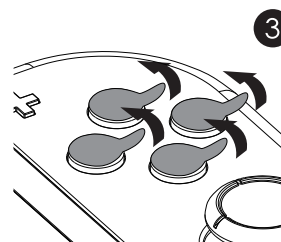
FITTING THE BUTTON CAPS



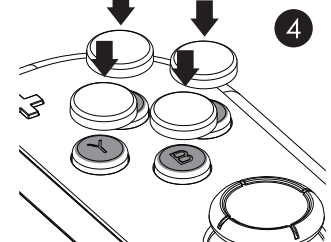
1 Remove the stickers from the back mask



2 Attach the stickers to the buttons

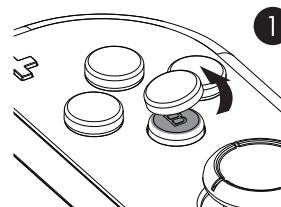


3 Remove the front mask on the stickers

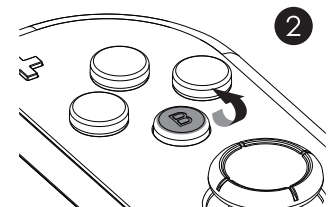


4 Attach the caps to the buttons

REMOVING THE D-PAD & BUTTON CAPS



1 Remove the caps



2 rub off stickers