

# CERTIFICATE OF ANALYSIS



Order #: 34571  
 Order Name: 1500mg Lemon  
 Batch#: 080819  
 Received: 08/13/2019  
 Completed: 08/27/2019



Noli Oil LLC  
 2001 W Southlake BLVD. 111  
 Southlake TX, 76092  
 (817) 909-0063



## Sample



N/D  
D9-THC

5.516%  
Total CBD

1,519.6 mg  
Cannabinoids per  
tincture

1,505.9 mg  
CBD per  
tincture

1 tincture = 30 ml per tincture x density  
 (0.91) x Cannabinoid concentration

## Cannabinoids Test

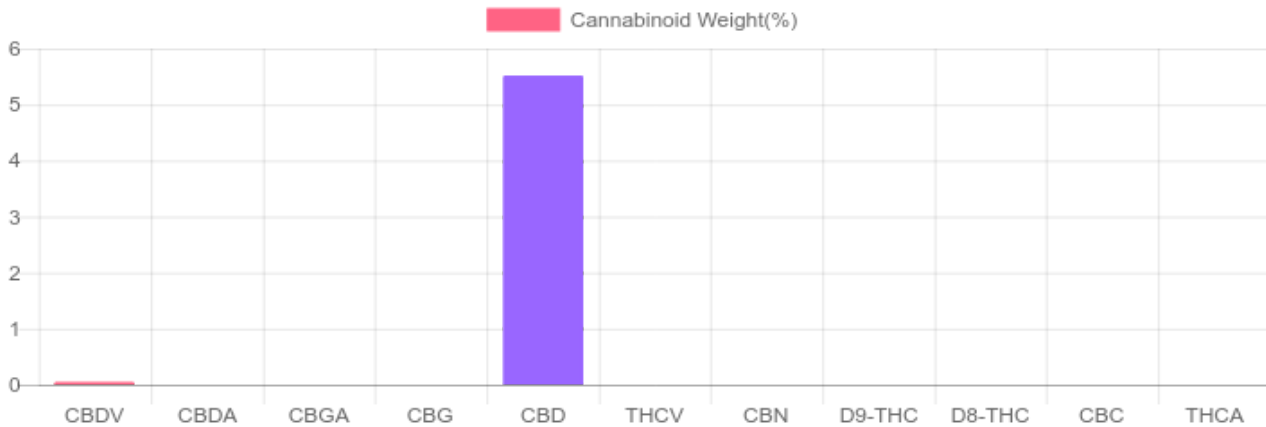
SHIMADZU INTEGRATED UPLC-PDA  
 GSL SOP 400

PREPARED: 08/27/2019 17:35:36

UPLOADED: 08/14/2019 15:52:19

Cannabinoids	LOQ	weight(%)	mg/g	mg/tincture
D9-THC	10 PPM	N/D	N/D	N/D
THCA	10 PPM	N/D	N/D	N/D
CBD	10 PPM	5.516%	55.162	1,505.9
CBDA	20 PPM	N/D	N/D	N/D
CBDV	20 PPM	0.050%	0.503	13.7
CBC	10 PPM	N/D	N/D	N/D
CBN	10 PPM	N/D	N/D	N/D
CBG	10 PPM	N/D	N/D	N/D
CBGA	20 PPM	N/D	N/D	N/D
D8-THC	10 PPM	N/D	N/D	N/D
THCV	10 PPM	N/D	N/D	N/D

TOTAL D9-THC	N/D	N/D	N/D
TOTAL CBD*	5.516%	55.162	1,505.9
TOTAL CANNABINOIDS	5.566%	55.665	1,519.6



Reporting Limit 10 ppm

\*Total CBD = CBD + CBDA x 0.877

N/D - Not Detected, B/LOQ - Below Limit of Quantification



4001 SW 47th Avenue Suite 207  
 Davie, FL 33314  
 1-833-TEST-CBD  
 info@greenscientificlabs.com



Dr. Andrew Hall, Ph.D., CSO & Lab Director

Green Scientific Labs uses its best efforts to deliver high quality results and to verify that the data contained therein are based on sound scientific judgment and levels listed are guidelines only and all data was reported based on standard laboratory procedures and deviations. However Green Scientific Labs makes no warranties or claims to that effect and further shall not be liable for any damage or misrepresentation that may result from the use or misuse of the data contained herein in any way. Further, Green Scientific Labs makes no claims regarding representations of the analyzed sample to the larger batch from which it was taken. Data and information in this report are intended solely for the individual(s) for whom samples were submitted and as part of our strict confidentiality policy, Green Scientific Labs can only discuss results with the original client of record.

# CERTIFICATE OF ANALYSIS



**Order #:** 34571  
**Order Name:** 1500mg Lemon  
**Batch#:** 080819  
**Received:** 08/13/2019  
**Completed:** 08/27/2019



**Noli Oil LLC**  
 2001 W Southlake BLVD. 111  
 Southlake TX, 76092  
 (817) 909-0063



## TERPENES: TOTAL (1.037%)

Headspace GCMS - Shimadzu GCMS QP2020 with HS20

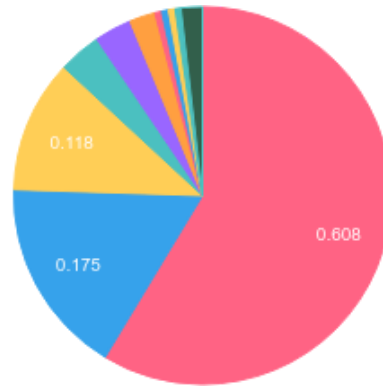
GSL SOP 404

**Prepared:** 08/13/2019 22:51:11  
**Uploaded:** 08/15/2019 16:24:39

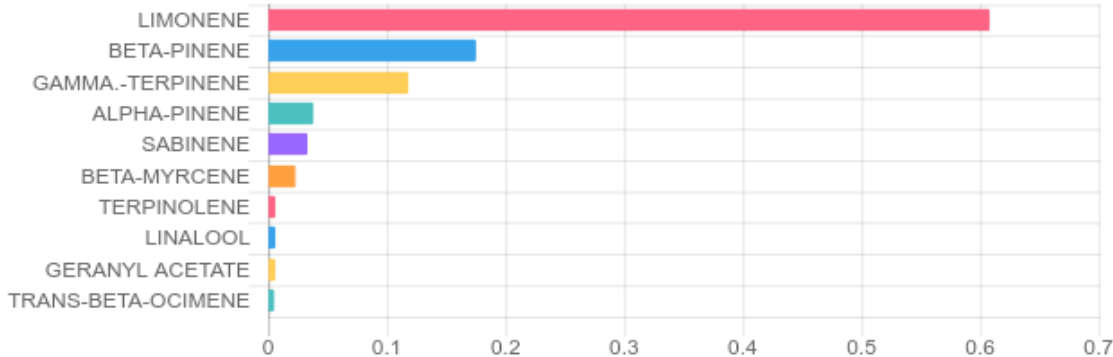
Terpene	Results (%)	LOQ (%)	LOD (%)
ALPHA-PINENE	0.038%	0.0067%	0.0063%
BETA-MYRCENE	0.023%	0.0067%	0.0063%
BETA-PINENE	0.175%	0.0067%	0.0063%
CAMPHENE	B/LOQ	0.0067%	0.0063%
CARYOPHYLLENE	B/LOQ	0.0067%	0.0063%
EUCALYPTOL	B/LOQ	0.0067%	0.0063%
GAMMA.-TERPINENE	0.118%	0.0067%	0.0016%
GERANYL ACETATE	B/LOQ	0.0067%	0.0063%
GUAJOL	B/LOQ	0.0067%	0.0063%
LIMONENE	0.608%	0.0067%	0.0063%
LINALOOL	B/LOQ	0.0067%	0.0063%
SABINENE	0.033%	0.0067%	0.0063%
TERPINEOL (MIX OF ISOMERS)	B/LOQ	0.0067%	0.0063%
TERPINOLENE	B/LOQ	0.0067%	0.0063%

Terpene	Results (%)	LOQ (%)	LOD (%)
TRANS-BETA-OCIMENE	B/LOQ	0.0067%	0.0031%

### Terpenes Breakdown



### Top Terpenes Results:



### Tested for but not present:

ALPHA-PHELLANDRENE, 3-CARENE, ALPHA-TERPINENE, CIS-BETA-OCIMENE, SABINENE HYDRATE, FENCHONE, FENCHOL, ISOPULEGOL, CAMPHOR, ISOBORNEOL, MENTHOL, BORNEOL, GAMMA-TERPINEOL, NEROL, GERANIOL, PULEGONE, ALPHA-CEDRENE, HUMULENE, VALENCENE, CIS-NEROLIDOL, TRANS-NEROLIDOL, CARYOPHYLLENE OXIDE, CEDROL, ALPHA-BISABOLOL



4001 SW 47th Avenue Suite 207  
 Davie, FL 33314  
 1-833-TEST-CBD  
 info@greenscientificlabs.com



Dr. Andrew Hall, Ph.D., CSO & Lab Director

Green Scientific Labs uses its best efforts to deliver high quality results and to verify that the data contained therein are based on sound scientific judgment and levels listed are guidelines only and all data was reported based on standard laboratory procedures and deviations. However Green Scientific Labs makes no warranties or claims to that effect and further shall not be liable for any damage or misrepresentation that may result from the use or misuse of the data contained herein in any way. Further, Green Scientific Labs makes no claims regarding representations of the analyzed sample to the larger batch from which it was taken. Data and information in this report are intended solely for the individual(s) for whom samples were submitted and as part of our strict confidentiality policy, Green Scientific Labs can only discuss results with the original client of record.

# CERTIFICATE OF ANALYSIS



Order #: 34571  
 Order Name: 1500mg Lemon  
 Batch#: 080819  
 Received: 08/13/2019  
 Completed: 08/27/2019



Noli Oil LLC  
 2001 W Southlake BLVD. 111  
 Southlake TX, 76092  
 (817) 909-0063



## PESTICIDE ANALYSIS:

GSL SOP 401

PREPARED: 08/13/2019 20:55:27

UPLOADED: 08/15/2019 17:36:57

LCMS-MS - Shimadzu LCMS-8060

Pesticide	Action Level (ppm)	Results (ppm)	LOQ (ppm)	LOD (ppm)	Pesticide	Action Level (ppm)	Results (ppm)	LOQ (ppm)	LOD (ppm)
ABAMECTIN B1A	0.100	N/D	0.005	0.001	IMAZALIL	0.100	N/D	0.005	0.001
ACEPHATE	0.100	N/D	0.001	0.001	IMIDACLOPRID	5.000	N/D	0.005	0.001
ACEQUINOCYL	0.100	N/D	0.001	0.001	KRESOXIM-METHYL	0.100	N/D	0.010	0.005
ACETAMIPRID	0.100	N/D	0.005	0.001	MALATHION	0.500	N/D	0.005	0.001
ALDICARB	0.100	N/D	0.005	0.001	METALAXYL	2.000	0.002	0.001	0.001
AZOXYSTROBIN	0.100	N/D	0.001	0.001	METHIOCARB	0.100	N/D	0.005	0.001
BIFENAZATE	0.100	N/D	0.005	0.001	METHOMYL	1.000	N/D	0.001	0.001
BIFENTHRIN	3.000	N/D	0.005	0.001	MEVINPHOS	0.100	N/D	0.001	0.001
BOSCALID	0.100	N/D	0.005	0.001	MYCLOBUTANIL	0.100	N/D	0.005	0.001
CARBARYL	0.500	N/D	0.003	0.001	NALED	0.100	N/D	0.005	0.001
CARBOFURAN	0.100	N/D	0.001	0.001	OXAMYL	0.500	N/D	0.001	0.001
CHLORANTRANILIPROLE	10.000	N/D	0.005	0.005	PACLOBUTRAZOL	0.100	N/D	0.005	0.001
CHLORPYRIFOS	0.100	0.005	0.001	0.001	PERMETHRINS	0.500	N/D	0.005	0.001
CLOFENTEZINE	0.100	N/D	0.001	0.001	PHOSMET	0.100	N/D	0.005	0.001
DAMINOZIDE	0.100	N/D	0.005	0.001	PIPERONYL				
DIAZANON	0.100	N/D	0.001	0.001	BUTOXIDE	3.000	N/D	0.001	0.001
DICHLORVOS	0.100	N/D	0.005	0.001	PRALLETHRIN	0.100	N/D	0.005	0.005
DIMETHOATE	0.100	N/D	0.001	0.001	PROPICONAZOLE	0.100	N/D	0.010	0.005
DIMETHOMORPH	2.000	N/D	0.005	0.001	PROPOXUR	0.100	N/D	0.001	0.001
ETHOPROPHOS	0.100	N/D	0.001	0.001	PYRETHRINS				
ETOFENPROX	0.100	N/D	0.001	0.001	(PYRETHRIN I)	0.500	N/D	0.005	0.005
ETOXAZOLE	0.100	N/D	0.010	0.005	PYRIDABEN	0.100	N/D	0.005	0.001
FENHEXAMID	0.100	N/D	0.005	0.001	SPINETORAM	0.100	N/D	0.001	0.001
FENOXYCARB	0.100	N/D	0.005	0.001	SPINOSAD	0.100	N/D	0.001	0.001
FENPYROXIMATE	0.100	N/D	0.001	0.001	SPIROMESIFEN	0.100	N/D	0.005	0.001
FIPRONIL	0.100	N/D	0.003	0.001	SPIROTETRAMAT	0.100	N/D	0.001	0.001
FLONICAMID	0.100	N/D	0.025	0.010	SPIROXAMINE	0.100	N/D	0.001	0.001
FLUDIOXONIL	0.100	N/D	0.003	0.001	TEBUCONAZOLE	0.100	N/D	0.005	0.001
HEXYTHIAZOX	0.100	0.006	0.005	0.001	THIACLOPRID	0.100	N/D	0.001	0.001
					THIAMETHOXAM	5.000	N/D	0.001	0.001
					TRIFLOXYSTROBIN	0.100	N/D	0.001	0.001

N/D = Not Detected, A/LOQ = Above LOQ Level, B/LOQ = Below LOQ Level, B/LOD = Below LOD Level



4001 SW 47th Avenue Suite 207  
 Davie, FL 33314  
 1-833-TEST-CBD  
 info@greenscientificlabs.com



Dr. Andrew Hall, Ph.D., CSO & Lab Director

Green Scientific Labs uses its best efforts to deliver high quality results and to verify that the data contained therein are based on sound scientific judgment and levels listed are guidelines only and all data was reported based on standard laboratory procedures and deviations. However Green Scientific Labs makes no warranties or claims to that effect and further shall not be liable for any damage or misrepresentation that may result from the use or misuse of the data contained herein in any way. Further, Green Scientific Labs makes no claims regarding representations of the analyzed sample to the larger batch from which it was taken. Data and information in this report are intended solely for the individual(s) for whom samples were submitted and as part of our strict confidentiality policy, Green Scientific Labs can only discuss results with the original client of record.

# CERTIFICATE OF ANALYSIS



Order #: 34571  
Order Name: 1500mg Lemon  
Batch#: 080819  
Received: 08/13/2019  
Completed: 08/27/2019



Noli Oil LLC  
2001 W Southlake BLVD. 111  
Southlake TX, 76092  
(817) 909-0063



## RESIDUAL SOLVENTS:

Headspace GCMS - Shimadzu GCMS QP2020 with HS20

GSL SOP 405

Prepared: 08/13/2019 22:53:07

Uploaded: 08/15/2019 14:53:34

Residual Solvent	Action Level (ppm)	Results (ppm)	LOQ (ppm)	LOD (ppm)
ACETONE	5,000	B/LOQ	140	20
ACETONITRILE	410	N/D	25	1
BENZENE	1	N/D	1	0.5
BUTANE	5,000	N/D	50	10
CHLOROFORM	1	N/D	1	0.5
DICHLOROETHANE	1	N/D	1	0.5
DICHLOROMETHANE	1	N/D	1	0.5
ETHANOL	5,000	N/D	140	20
ETHYL ACETATE	5,000	N/D	140	20
ETHYL ETHER	5,000	N/D	140	20
ISOPROPYL ALCOHOL	5,000	B/LOQ	140	20
METHANOL	3,000	N/D	100	20
N-HEPTANE	5,000	N/D	140	20
N-HEXANE	290	N/D	18	10
PENTANE	5,000	N/D	140	20
PROPANE	5,000	N/D	20	1
TOLUENE	890	N/D	53	1
TRICHLOROETHENE	1	N/D	0	0
XYLENES	2,170	N/D	130	20



4001 SW 47th Avenue Suite 207  
Davie, FL 33314  
1-833-TEST-CBD  
info@greenscientificlabs.com



Dr. Andrew Hall, Ph.D., CSO & Lab Director

Green Scientific Labs uses its best efforts to deliver high quality results and to verify that the data contained therein are based on sound scientific judgment and levels listed are guidelines only and all data was reported based on standard laboratory procedures and deviations. However Green Scientific Labs makes no warranties or claims to that effect and further shall not be liable for any damage or misrepresentation that may result from the use or misuse of the data contained herein in any way. Further, Green Scientific Labs makes no claims regarding representations of the analyzed sample to the larger batch from which it was taken. Data and information in this report are intended solely for the individual(s) for whom samples were submitted and as part of our strict confidentiality policy, Green Scientific Labs can only discuss results with the original client of record.

# CERTIFICATE OF ANALYSIS



Order #: 34571  
 Order Name: 1500mg Lemon  
 Batch#: 080819  
 Received: 08/13/2019  
 Completed: 08/27/2019



Noli Oil LLC  
 2001 W Southlake BLVD. 111  
 Southlake TX, 76092  
 (817) 909-0063



## Mycotoxin Analysis:

LC-MS - Shimadzu LCMS-8060  
 GSL SOP 401

Uploaded: 08/15/2019 17:36:56

Analyte	Action Lvl (ppb)	Results (ppb)
AFLATOXIN B1	20	N/D
AFLATOXIN B2	20	N/D
AFLATOXIN G1	20	N/D
AFLATOXIN G2	20	N/D
OCHRATOXIN A	20	N/D

LOQ is 4ppb, LOD is 1ppb

## Microbial Analysis:

PCR - Agilent AriaMX

Test	Test Method Used	Device Used	LOD	Allowable Criteria	Actual Result	Pass/Fail
STEC E.COLI*	USP 61/62†	ARIAMX PCR	2 COPIES OF DNA	PRESENCE / ABSENT	BELOW LOD	PASS
SALMONELLA*	USP 61/62†	ARIAMX PCR	5 COPIES OF DNA	PRESENCE / ABSENT	BELOW LOD	PASS
ASPERGILLUS	USP 61/62†	ARIAMX PCR	ASP_LOD***	PRESENCE / ABSENT	BELOW LOD	PASS

† USP 61 (enumeration of bacteria TAC, TYM, and ENT/Coliform), USP 62 (identifying specific species E.coli Aspergillus etc)

\* STEC and Salmonella run as Multiplex

\*\*\* Flavus = 2 Copies of DNA / Fumigatis = 2 Copies of DNA Niger = 20 Copies of DNA / Terrus = 10 copies of DNA

## Heavy Metals Analysis:

ICP-MS - Shimadzu ICPMS-2030  
 GSL SOP 403

Uploaded: 08/15/2019 22:04:25

Metal	Action Level (ppb)	Result (ppb)
ARSENIC (AS)	200	B/LOQ
CADMIUM (CD)	200	B/LOQ
MERCURY (HG)	100	B/LOQ
LEAD (PB)	500	B/LOQ

Lower Limit of Quantitation (LOQ) is 75 ppb

Microbial Analysis GSL SOP 406

Uploaded: 08/18/2019 19:58:10



4001 SW 47th Avenue Suite 207  
 Davie, FL 33314  
 1-833-TEST-CBD  
 info@greenscientificlabs.com



Dr. Andrew Hall, Ph.D., CSO & Lab Director

Green Scientific Labs uses its best efforts to deliver high quality results and to verify that the data contained therein are based on sound scientific judgment and levels listed are guidelines only and all data was reported based on standard laboratory procedures and deviations. However Green Scientific Labs makes no warranties or claims to that effect and further shall not be liable for any damage or misrepresentation that may result from the use or misuse of the data contained herein in any way. Further, Green Scientific Labs makes no claims regarding representations of the analyzed sample to the larger batch from which it was taken. Data and information in this report are intended solely for the individual(s) for whom samples were submitted and as part of our strict confidentiality policy, Green Scientific Labs can only discuss results with the original client of record.