

# CERTIFICATE OF ANALYSIS



Order #: 29019  
Order Name: Lemon1000  
Batch#: CONO19-08  
Completed: 03/24/2019



Noli Oil LLC  
2001 W Southlake BLVD. 111  
Southlake TX, 76092  
(817) 909-0063



## Sample

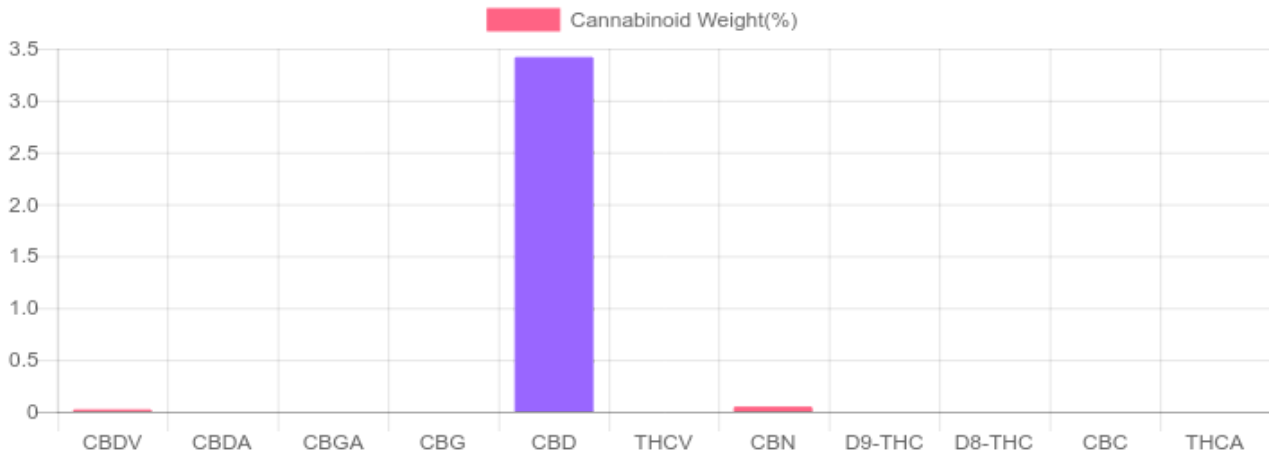


0.000%  
D9-THC

3.419%  
Total CBD

## Cannabinoids Test

cannabinoids		weight(%)	mg/g
DELTA-9-TETRAHYDROCANNABINOL	D9-THC	N/D	N/D
TETRAHYDROCANNABINOLIC ACID	THCA	N/D	N/D
CANNABIDIOL	CBD	3.419%	34.188
CANNABIDIOLIC ACID	CBDA	N/D	N/D
CANNABIDIVARIN	CBDV	0.022%	0.219
CANNABICHROMENE	CBC	N/D	N/D
CANNABINOL	CBN	0.048%	0.476
CANNABIGEROL	CBG	N/D	N/D
CANNABIGEROLIC ACID	CBGA	N/D	N/D
DELTA-8-TETRAHYDROCANNABINOL	D8-THC	N/D	N/D
TETRAHYDROCANNABIVARIN	THCV	N/D	N/D
TOTAL D9-THC		N/D	N/D
TOTAL CBD*		3.419%	34.188
TOTAL CANNABINOIDS		3.488%	34.880



\*Total CBD = CBD + CBDA x 0.877

## Notes

1026mg CBD per 30mL



4001 SW 47th Avenue Suite 207  
Davie, FL 33314  
1-833-TEST-CBD  
info@greenscientificlabs.com



Dylan Swart, Lab Director

Green Scientific Labs uses its best efforts to deliver high quality results and to verify that the data contained therein are based on sound scientific judgment and levels listed are guidelines only and all data was reported based on standard laboratory procedures and deviations. However Green Scientific Labs makes no warranties or claims to that effect and further shall not be liable for any damage or misrepresentation that may result from the use or misuse of the data contained herein in any way. Further, Green Scientific Labs makes no claims regarding representations of the analyzed sample to the larger batch from which it was taken. Data and information in this report are intended solely for the individual(s) for whom samples were submitted and as part of our strict confidentiality policy, Green Scientific Labs can only discuss results with the original client of record.

# CERTIFICATE OF ANALYSIS



Order #: 29019  
Order Name: Lemon1000  
Batch#: CONO19-08  
Completed: 03/24/2019



Noli Oil LLC  
2001 W Southlake BLVD. 111  
Southlake TX, 76092  
(817) 909-0063

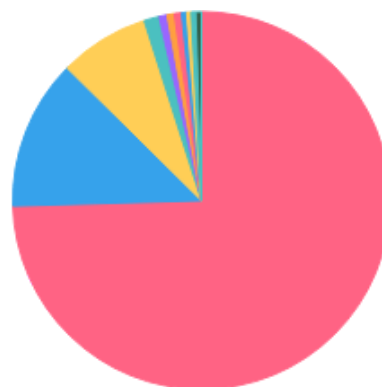


## TERPENES: TOTAL (1.610%)

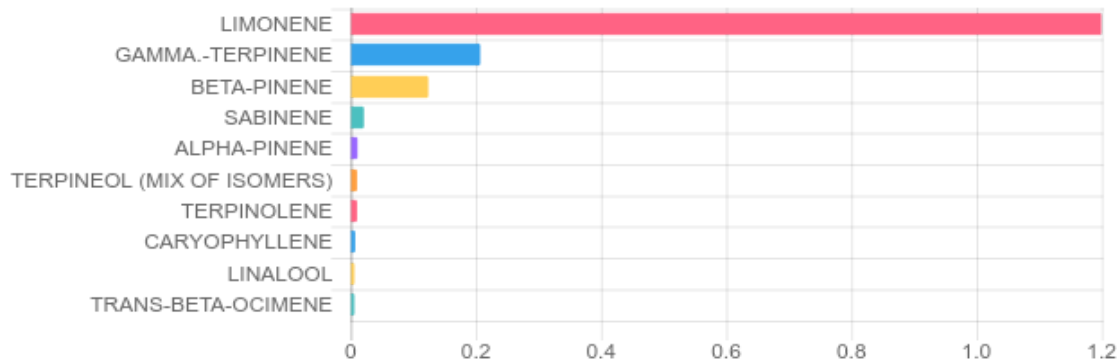
GC-Headspace - Shimadzu GCMS QP2020 with HS20

Terpene	Results (%)
ALPHA-PINENE	0.011%
ALPHA-PHELLANDRENE	0.003%
BETA-PINENE	0.124%
CARYOPHYLLENE	0.007%
CIS-BETA-OCIMENE	0.005%
GAMMA-TERPINENE	0.207%
LIMONENE	1.200%
LINALOOL	0.006%
SABINENE	0.021%
TERPINEOL (MIX OF ISOMERS)	0.010%
TERPINOLENE	0.010%
TRANS-BETA-OCIMENE	0.006%

## Terpenes Breakdown



## Top Terpenes Results:



## Tested for but not present:

(1R)-ENDO-(+)-FENCHYL ALCOHOL, 3-CARENE, ALPHA-BISABOLOL, ALPHA-CEDRENE, ALPHA-TERPINENE, BETA-MYRCENE, BORNEOL (MIX OF ISOMERS), CAMPHENE, CAMPHOR, CAMPHOR (MIX OF ISOMERS), CARYOPHYLLENE OXIDE, CEDROL, CIS-NEROLIDOL, EUCALYPTOL, FENCHONE, FENCHONE (ISOMER), GAMMA-TERPINEOL, GERANIOL, GERANYL ACETATE, GUAJOL, HUMULENE, ISOBORNEOL, ISOPULEGOL, MENTHOL, NEROL, PULEGONE, SABINENE HYDRATE, TRANS-NEROLIDOL, VALENCENE



4001 SW 47th Avenue Suite 207  
Davie, FL 33314  
1-833-TEST-CBD  
info@greenscientificlabs.com



Dylan Swart, Lab Director

Green Scientific Labs uses its best efforts to deliver high quality results and to verify that the data contained therein are based on sound scientific judgment and levels listed are guidelines only and all data was reported based on standard laboratory procedures and deviations. However Green Scientific Labs makes no warranties or claims to that effect and further shall not be liable for any damage or misrepresentation that may result from the use or misuse of the data contained herein in any way. Further, Green Scientific Labs makes no claims regarding representations of the analyzed sample to the larger batch from which it was taken. Data and information in this report are intended solely for the individual(s) for whom samples were submitted and as part of our strict confidentiality policy, Green Scientific Labs can only discuss results with the original client of record.

# CERTIFICATE OF ANALYSIS



Order #: 29019  
Order Name: Lemon1000  
Batch#: CONO19-08  
Completed: 03/24/2019



Noli Oil LLC  
2001 W Southlake BLVD. 111  
Southlake TX, 76092  
(817) 909-0063



## PESTICIDE ANALYSIS:

GC QQQ - Shimadzu GCMS-TQ8040

Pesticide	Action Level (ppm)	Results (ppm)	LOQ (ppm)	LOD (ppm)
ABAMECTIN B1A	0.100	N/D	0.003	0.001
ACEPHATE	0.100	N/D	0.003	0.001
ACEQUINOCYL	0.100	N/D	0.003	0.001
ACETAMIPRID	0.100	N/D	0.003	0.001
ALDICARB	0.100	N/D	0.003	0.001
AZOXYSTROBIN	0.100	N/D	0.003	0.001
BIFENAZATE	0.100	N/D	0.003	0.001
BIFENTHRIN	3.000	N/D	0.003	0.001
BOSCALID	0.100	N/D	0.003	0.001
CARBARYL	0.500	N/D	0.003	0.001
CARBOFURAN	0.100	N/D	0.003	0.001
CHLORANTRANILIPROLE	10.000	N/D	0.003	0.001
CHLORPYRIFOS	0.100	N/D	0.003	0.001
CLOFENTEZINE	0.100	N/D	0.003	0.001
DAMINOZIDE	0.100	N/D	0.003	0.001
DIAZINON	0.100	N/D	0.003	0.001
DICHLORVOS	0.100	N/D	0.003	0.001
DIMETHOATE	0.100	N/D	0.003	0.001
DIMETHOMORPH	2.000	N/D	0.003	0.001
ETHOPROPHOS	0.100	N/D	0.003	0.001
ETOFENPROX	0.100	N/D	0.003	0.001
ETOXAZOLE	0.100	N/D	0.003	0.001
FENHEXAMID	0.100	N/D	0.003	0.001
FENOXYCARB	0.100	N/D	0.003	0.001
FENPYROXIMATE	0.100	N/D	0.003	0.001
FIPRONIL	0.100	N/D	0.003	0.001
FLONICAMID	0.100	N/D	0.003	0.001
FLUDIOXONIL	0.100	N/D	0.003	0.001
HEXYTHIAZOX	0.100	B/LOQ	0.003	0.001

## PESTICIDE ANALYSIS:

GC QQQ - Shimadzu LCMS-8060

Pesticide	Action Level (ppm)	Results (ppm)	LOQ (ppm)	LOD (ppm)
IMAZALIL	0.100	N/D	0.003	0.001
IMIDACLOPRID	5.000	N/D	0.003	0.001
KRESOXIM-METHYL	0.100	N/D	0.003	0.001
MALATHION	0.500	N/D	0.003	0.001
METALAXYL	2.000	N/D	0.003	0.001
METHIOCARB	0.100	N/D	0.003	0.001
METHOMYL	1.000	N/D	0.003	0.001
MEVINPHOS	0.100	N/D	0.003	0.001
MYCLOBUTANIL	0.100	N/D	0.003	0.001
NALED	0.100	N/D	0.003	0.001
OXAMYL	0.500	N/D	0.003	0.001
PACLOBUTRAZOL	0.100	N/D	0.003	0.001
PERMETHRINS	0.500	N/D	0.003	0.001
PHOSMET	0.100	N/D	0.003	0.001
PIPERONYL BUTOXIDE	3.000	N/D	0.003	0.001
PRALLETHRIN	0.100	N/D	0.003	0.001
PROPICONAZOLE	0.100	N/D	0.003	0.001
PROPOXUR	0.100	N/D	0.003	0.001
PYRETHRINS (PYRETHRIN I)	0.500	N/D	0.003	0.001
PYRIDABEN	0.100	N/D	0.003	0.001
SPINETORAM	0.100	N/D	0.003	0.001
SPINOSAD	0.100	N/D	0.003	0.001
SPIROMESIFEN	0.100	N/D	0.003	0.001
SPIROTETRAMAT	0.100	N/D	0.003	0.001
SPIROXAMINE	0.100	N/D	0.003	0.001
TEBUCONAZOLE	0.100	N/D	0.003	0.001
THIACLOPRID	0.100	N/D	0.003	0.001
THIAMETHOXAM	5.000	N/D	0.003	0.001
TRIFLOXYSTROBIN	0.100	N/D	0.003	0.001

N/D = Not Detected, B/LOQ = Below LOQ Level, B/LOD = Below LOD Level



4001 SW 47th Avenue Suite 207  
Davie, FL 33314  
1-833-TEST-CBD  
info@greenscientificlabs.com



Dylan Swart, Lab Director

Green Scientific Labs uses its best efforts to deliver high quality results and to verify that the data contained therein are based on sound scientific judgment and levels listed are guidelines only and all data was reported based on standard laboratory procedures and deviations. However Green Scientific Labs makes no warranties or claims to that effect and further shall not be liable for any damage or misrepresentation that may result from the use or misuse of the data contained herein in any way. Further, Green Scientific Labs makes no claims regarding representations of the analyzed sample to the larger batch from which it was taken. Data and information in this report are intended solely for the individual(s) for whom samples were submitted and as part of our strict confidentiality policy, Green Scientific Labs can only discuss results with the original client of record.

# CERTIFICATE OF ANALYSIS



Order #: 29019  
Order Name: Lemon1000  
Batch#: CONO19-08  
Completed: 03/24/2019



Noli Oil LLC  
2001 W Southlake BLVD. 111  
Southlake TX, 76092  
(817) 909-0063



## RESIDUAL SOLVENTS:


GC-Headspace - Shimadzu GCMS QP2020 with HS20

Residual Solvent	Action Level (ppm)	Results (ppm)
ACETONE	5,000.000	N/D
ACETONITRILE	410.000	N/D
BENZENE	1.000	N/D
BUTANE	5,000.000	N/D
CHLOROFORM	1.000	N/D
DICHLOROETHANE	1.000	N/D
DICHLOROMETHANE	1.000	N/D
ETHANOL	5,000.000	N/D
ETHYL ACETATE	5,000.000	N/D
ETHYL ETHER	5,000.000	N/D
ISOPROPYL ALCOHOL	5,000.000	N/D
METHANOL	3,000.000	N/D
N-HEPTANE	5,000.000	N/D
N-HEXANE	290.000	N/D
PENTANE	5,000.000	N/D
PROPANE	5,000.000	N/D
TOLUENE	890.000	N/D
TRICHLOROETHANE	1.000	N/D
XYLENES	2,170.000	N/D



4001 SW 47th Avenue Suite 207  
Davie, FL 33314  
1-833-TEST-CBD  
info@greenscientificlabs.com



  
Dylan Swart, Lab Director

Green Scientific Labs uses its best efforts to deliver high quality results and to verify that the data contained therein are based on sound scientific judgment and levels listed are guidelines only and all data was reported based on standard laboratory procedures and deviations. However Green Scientific Labs makes no warranties or claims to that effect and further shall not be liable for any damage or misrepresentation that may result from the use or misuse of the data contained herein in any way. Further, Green Scientific Labs makes no claims regarding representations of the analyzed sample to the larger batch from which it was taken. Data and information in this report are intended solely for the individual(s) for whom samples were submitted and as part of our strict confidentiality policy, Green Scientific Labs can only discuss results with the original client of record.

# CERTIFICATE OF ANALYSIS



Order #: 29019  
Order Name: Lemon1000  
Batch#: CONO19-08  
Completed: 03/24/2019



Noli Oil LLC  
2001 W Southlake BLVD. 111  
Southlake TX, 76092  
(817) 909-0063



## Mycotoxin Analysis:

LC-MS - Shimadzu LCMS-8060

Analyte	Action Lvl (ppb)	Results (ppb)
AFLATOXIN B1	20.000	N/D
AFLATOXIN B2	20.000	N/D
AFLATOXIN G1	20.000	N/D
AFLATOXIN G2	20.000	N/D
OCHRATOXIN A	20.000	N/D

## Microbial Analysis:

PCR - Agilent AriaMX

Test	Pass/Fail	CFU
STEC E. COLI	PASS	
SALMONELLA	PASS	
ASPERGILLUS	PASS	

## Heavy Metals Analysis:

ICP-MS - Shimadzu ICPMS-2030

Metal	Action Level (ppb)	Result (ppb)
ARSENIC (AS)	200.000	29.600
CADMIUM (CD)	200.000	36.000
MERCURY (HG)	100.000	77.300
LEAD (PB)	500.000	49.000

\*Lower Limit of Quantitation (LOQ) is 1 ppb



4001 SW 47th Avenue Suite 207  
Davie, FL 33314  
1-833-TEST-CBD  
info@greenscientificlabs.com



  
Dylan Swart, Lab Director

Green Scientific Labs uses its best efforts to deliver high quality results and to verify that the data contained therein are based on sound scientific judgment and levels listed are guidelines only and all data was reported based on standard laboratory procedures and deviations. However Green Scientific Labs makes no warranties or claims to that effect and further shall not be liable for any damage or misrepresentation that may result from the use or misuse of the data contained herein in any way. Further, Green Scientific Labs makes no claims regarding representations of the analyzed sample to the larger batch from which it was taken. Data and information in this report are intended solely for the individual(s) for whom samples were submitted and as part of our strict confidentiality policy, Green Scientific Labs can only discuss results with the original client of record.