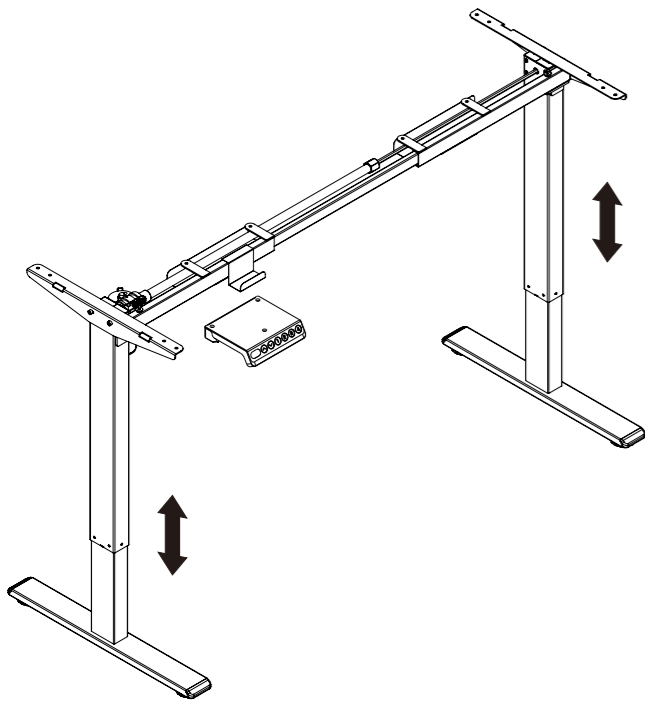


FLT-20



Technical Data

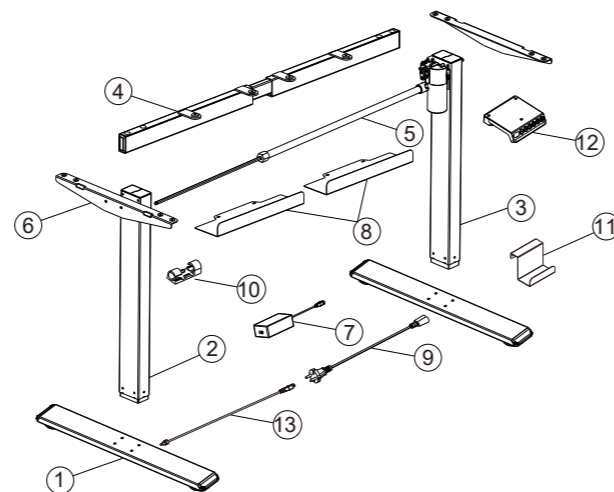
Number of stages	2
Number of motors	1
Rated Load	155 lbs
No Load Speed	1.00"/sec
Input Voltage	100VAC to 240VAC
Lowest Position	27.9"
Highest Position	47.6"
Recommended Tabletop Size	L: 39.3" to 62.9" W: 19.6" to 31.4"
Duty Cycle	10% (2 minutes on, 18 minutes off)
Operational Temperature	0°C to 40°C

Parts List

Attention: The drawings below are for reference only which may be slightly different from the physical product. Please contact customer service if you are missing any components.

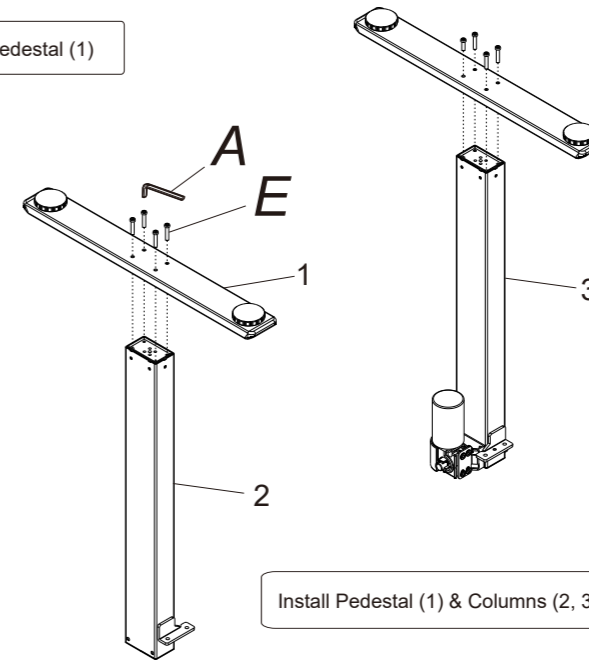


No.	Part	Qty	No.	Part	Qty	No.	Part	Qty
①	Pedestal	2	②	Column	1	③	Column	1
④	Supporting beam	1	⑤	Transmission rod	1	⑥	Supporting plate	2
⑦	Adapter	1	⑧	Baffle	2	⑨	Power cable	1
⑩	Cable tie	4	⑪	Adaptor holder	1	⑫	Remote	1
⑬	Switch cord	1	⑭	Gasket	16	⑮	Remote screw	3



STEP 1

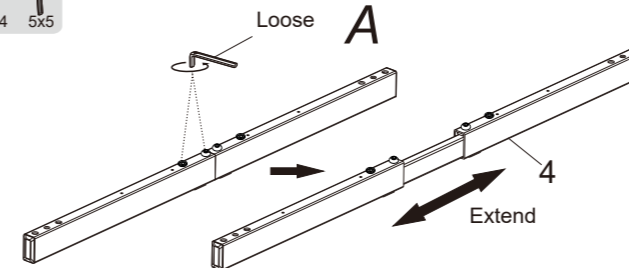
Install Pedestal (1)



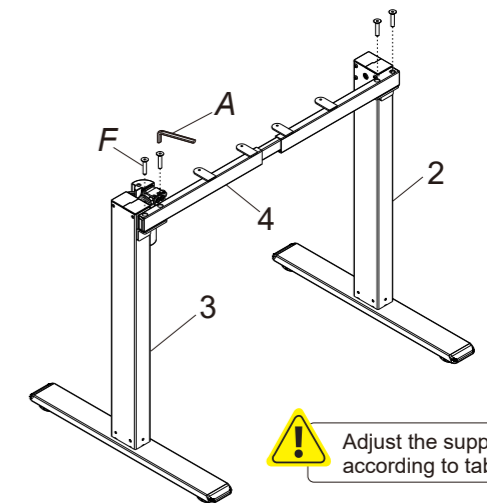
Install Pedestal (1) & Columns (2, 3) together. Use 5*5 wrench (A) to tighten the screws (E)

STEP 2

Install Supporting beam (4)



Loosen screws on (4) with wrench 4x4(A), then extend supporting beam.

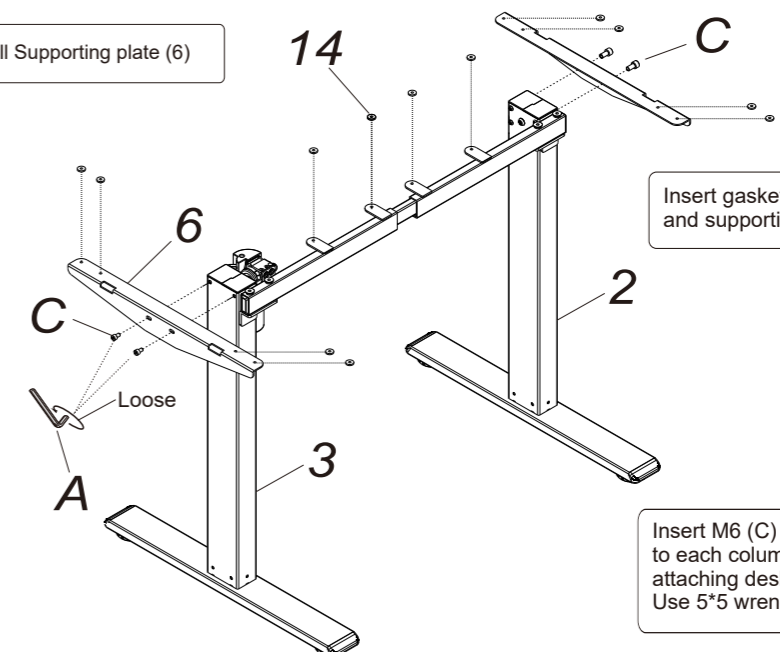
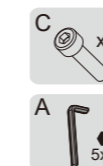


Install supporting beam on the column (2) (3), tighten screw (F) with wrench 5x5 (A)

! Adjust the support beam size(4) according to table top size.

STEP 3

Install Supporting plate (6)

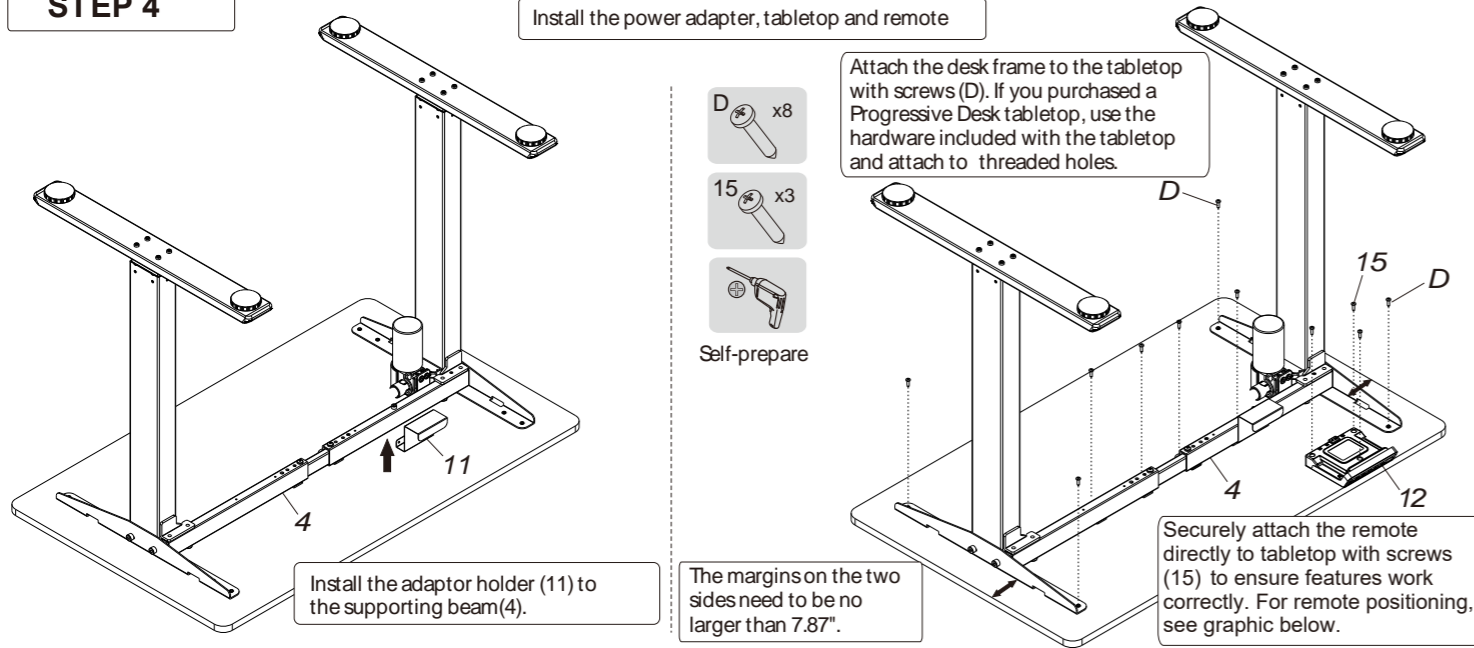


Insert gaskets (14) onto supporting beam (4) and supporting plates (6) locations.

Insert M6 (C) to attach supporting plates (6) to each column (2,3). Do not fully tighten until attaching desk frame to tabletop (see step 6). Use 5*5 wrench (A) to tighten screws (C).

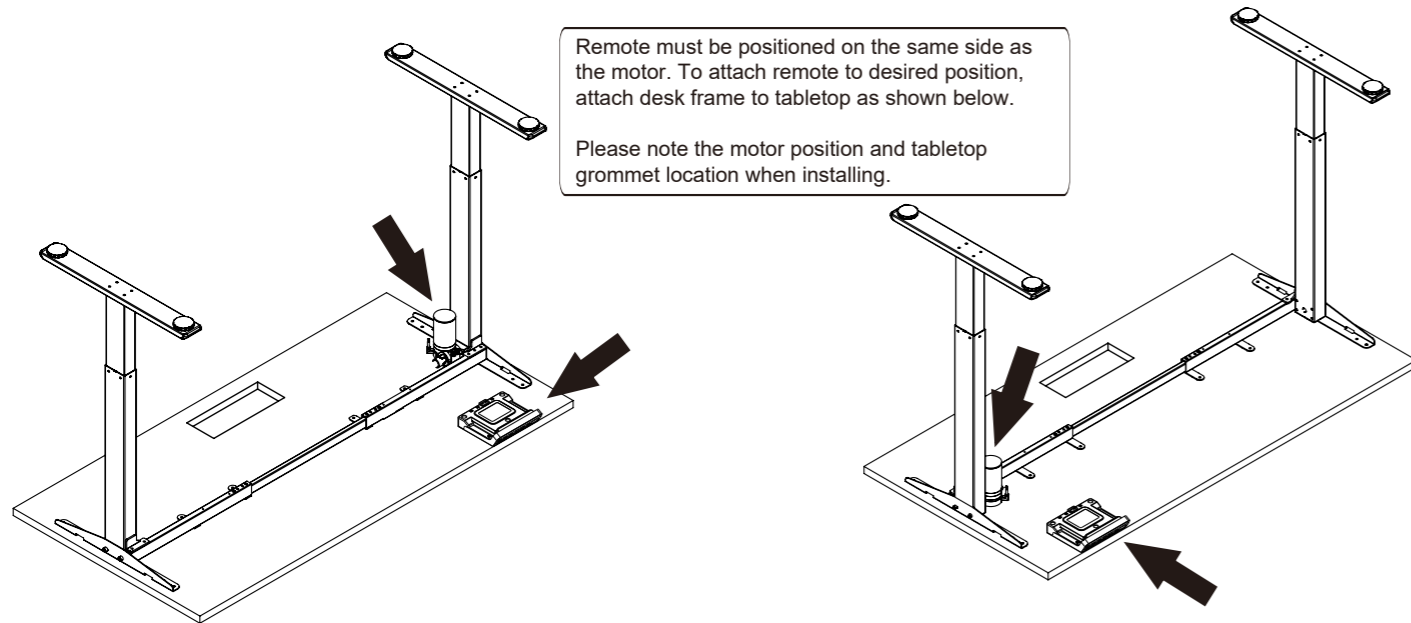
STEP 4

Install the power adapter, tabletop and remote



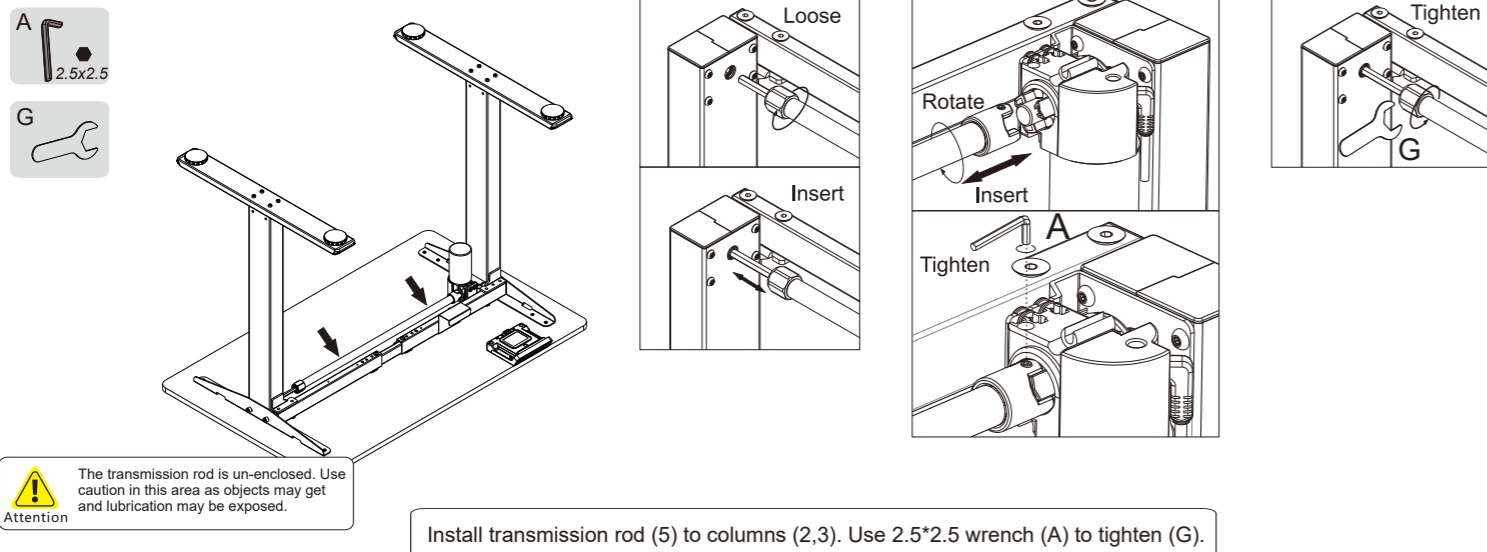
Remote must be positioned on the same side as the motor. To attach remote to desired position, attach desk frame to tabletop as shown below.

Please note the motor position and tabletop grommet location when installing.



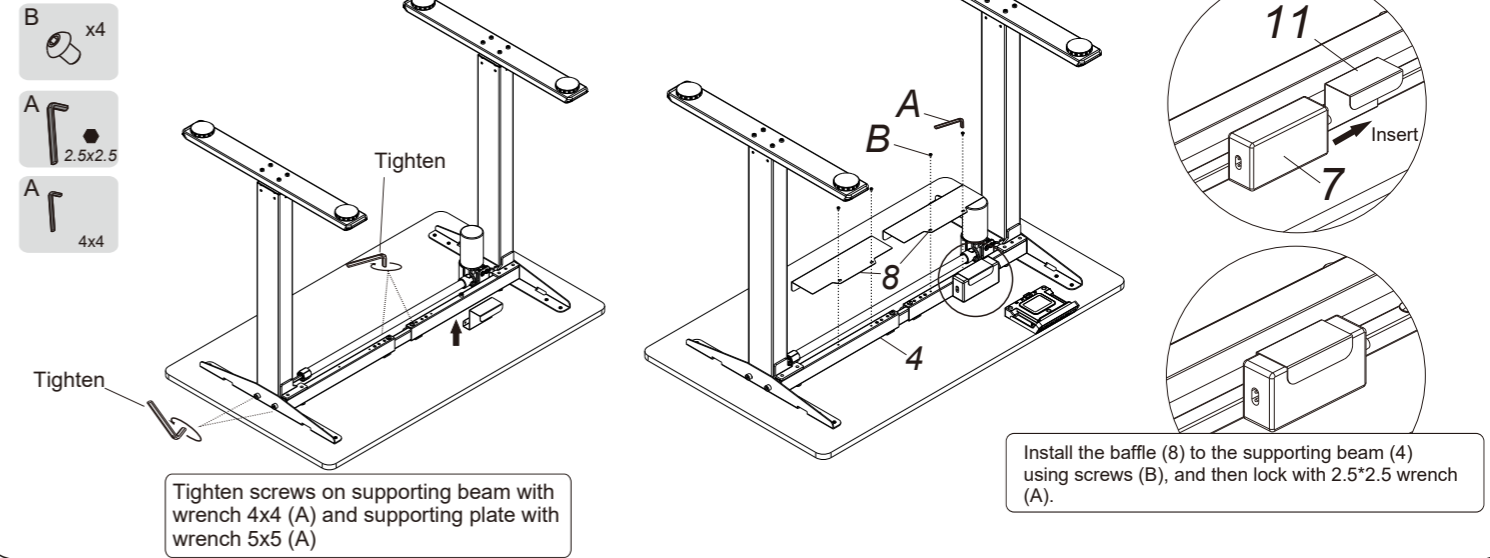
STEP 5

Install transmission rod



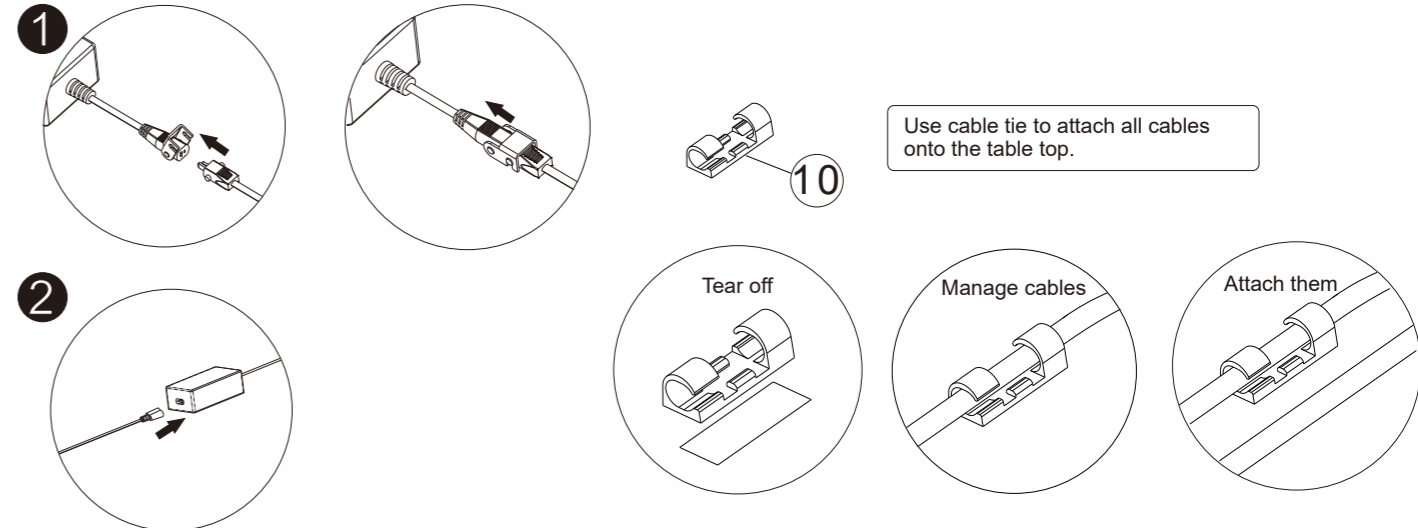
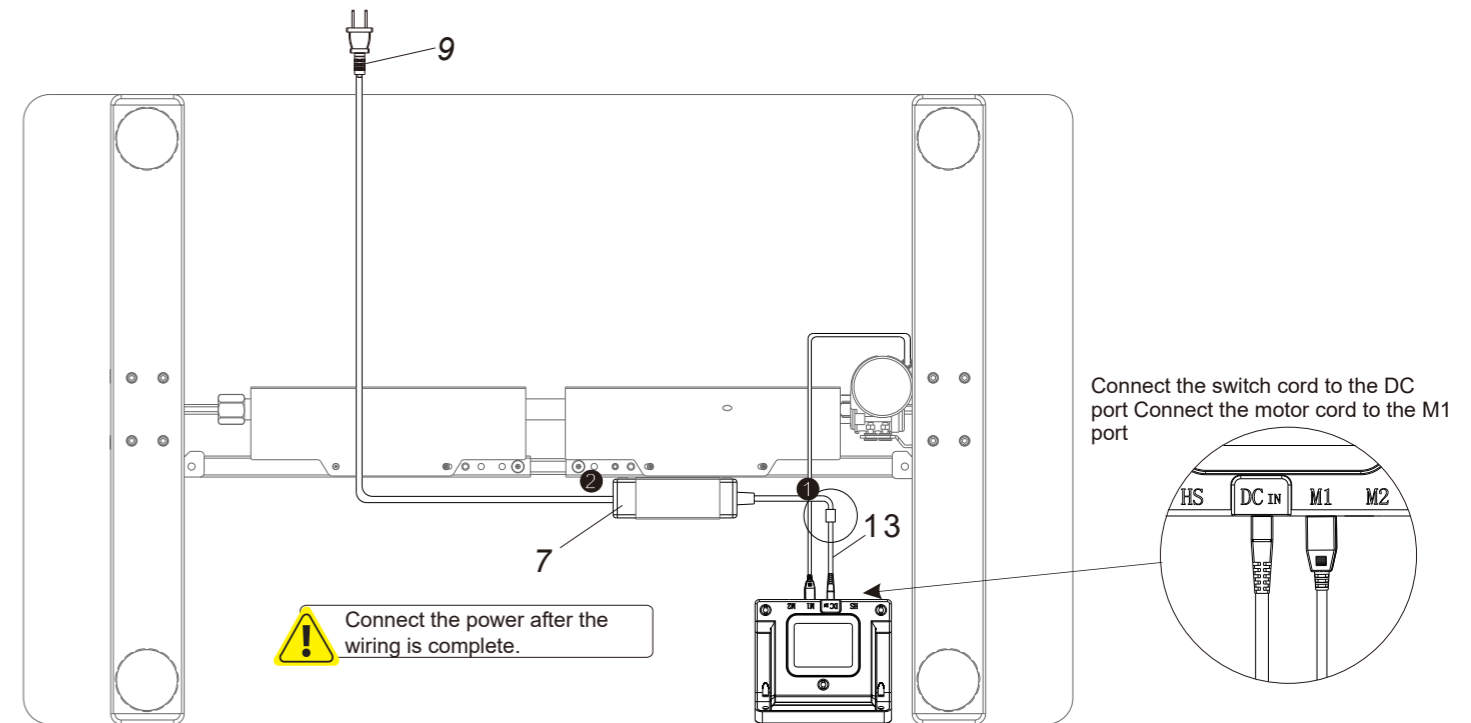
STEP 6

Secure supporting beam, install baffle and power adaptor

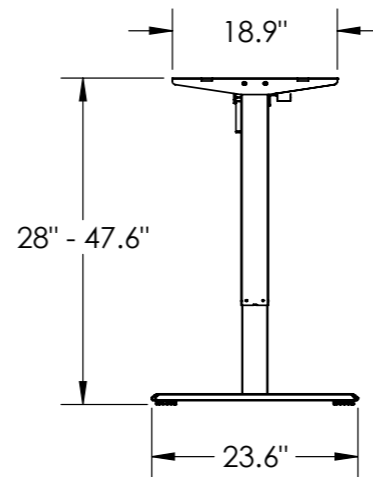
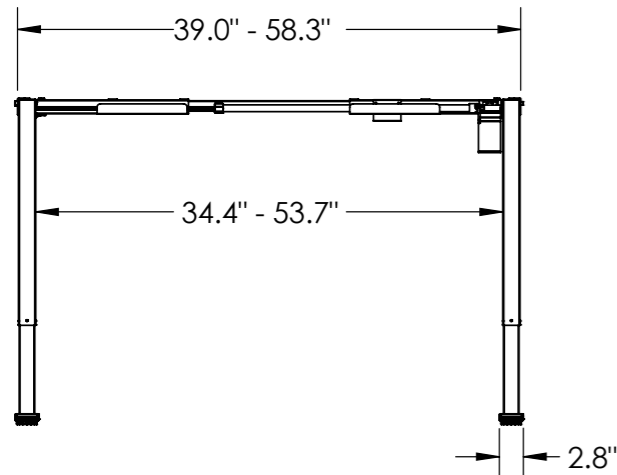
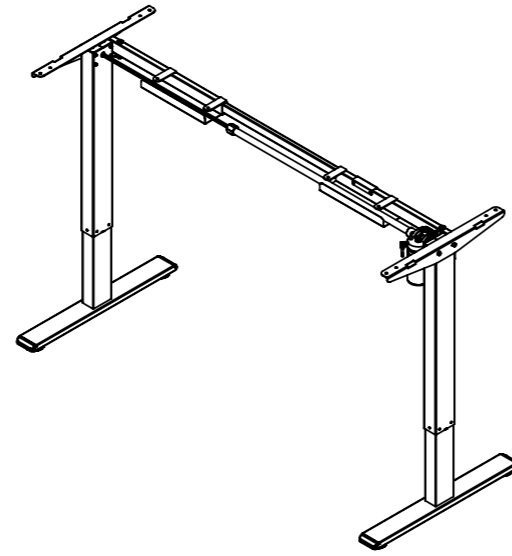
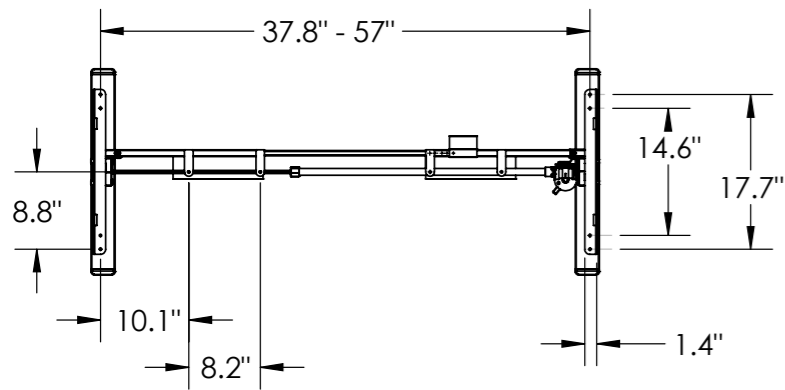


STEP 7

Connect all cables to the adaptor (7)

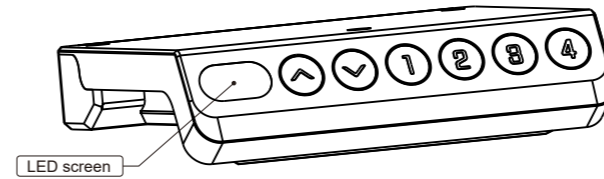


Dimensional Drawing



How to use Remote

Key button



●	"▲"	Up button, adjust the desk upwards
●	"▼"	Down button, adjust the desk downwards
●	"1"	Position 1, user's first stored height position
●	"2"	Position 2, user's second stored height position
●	"3"	Position 3, user's third stored height position
●	"4"	Position 4, user's fourth stored height position

● Troubleshooting:

1. Reset: When the LED shows "RST", press "▼" button until the desk descends to the lowest position. When the desk descends to the lowest position, it will raise slightly and run until the screen displays "bot". At that point, the reset has completed.
2. If the lift doesn't work and the LED shows "E01" or "E02", please retry 18 minutes later.
3. If the "▼" button doesn't work, please check the cable connection and then cut off the power for at least 10 seconds. Reconnect to the power and press "▼" button to start the reset process when it shows the "RST".
4. If the above process doesn't work, please contact our customer service.

Common fault treatment

Problem	Corrective Action
No response while long pressing down arrow after connected to a power supply	1. Check if all the cables are connected well 2. Contact your supplier or dealer
No response while pressing up arrow/ down arrow after connected to a power supply	1. Check if all the cables are connected well 2. Contact your supplier or dealer
Rising at a low speed	1. Check if overloaded, max loading: 70kg; 2. Contact your supplier or dealer
The motor doesn't move as instructed	1. Contact your supplier or dealer
Lowers but does not raise	1. Reset 2. Contact your supplier or dealer
Drifting downwards	1. Check if overloaded, max loading: 70kg; 2. Contact your supplier or dealer
Frequently Reposition	1. Check if overloaded, max loading: 70kg; 2. Contact your supplier or dealer
Overworked (Duty cycle: Max 2min on/18min OFF)	1. Wait 18 minutes, then perform reset procedure. 2. Contact your supplier or dealer.
Cannot reach full height range	1. Perform a reset operation; 2. Contact your supplier or dealer.
E01 & E02 Error on remote	1. Overworked. Wait 18 minutes and try again.
E03 or E04 Error on remote	1. Check if overloaded. If yes, lessen the load then press ▼ for reset until there is BOT letters on screen. If not, press ▼ for reset.
E20 Error on remote	1. Motor Error: Press ▼ for reset. If no response, remove power and wait 10 seconds, then reconnect and wait for "RST" on screen. Long press ▼ for RESET.
E30 Error on remote	1. Sensor Error. Try all above solutions. If no success, contact supplier or dealer

Operation Instruction

- Adjust Height :
 1. Press the "▲" button, the desk rises, press and hold to continue raising the desk height. Press once to rise the height by 0.1cm
 2. Press the "▼" button, the desk descends, press and hold to continue to descend. Press once to descend the height by 0.1cm
- Memory Preset Height:
 1. When the desktop is stationary, press and hold the "1" button for 5 seconds. The remote will beep and the display will show "S-1", indicating the saved position. Adjust the desk to any height and return the desk back to the saved position by pressing the "1" button.
 2. Buttons "2", "3", and "4" all have the same memory height function as Button "1". Repeat the steps above to set additional saved positions.
- Reset Operation:
 1. When the height of the device is incorrect or an error code appears, the device needs to be reset and corrected. Press and hold the "3" button and the "4" button simultaneously for 5 seconds to enter this function.
 2. After entering the reset function, the display will show "RST". Press and hold the "▼" button to reset the device. When the desk descends to the lowest position, it will raise slightly and run until the screen displays "bot". At that point, the reset has completed.
- Adjust the Collision Detection Sensitivity:
 1. Press and hold the "▲" button and the "▼" button simultaneously for 5 seconds to change the sensitivity. One gear will change each time this function is activated. There are 4 available gear options; A-0, A-1, A-2, A-3.
 2. When the display shows "A-0", the desk turns off the collision detection function; "A-3" for high sensitivity; "A-2" for middle sensitivity; "A-1" for low sensitivity.
 3. When the desk rises or descends, it will rebound immediately when it encounters an obstacle to protect.
- Child Lock Operation:
 1. Press and hold the "1" button and the "2" button simultaneously for 5 seconds to enter this function.
 2. After entering the child lock function, the desk will no longer be responsive.
 3. Press and hold the "1" button and the "2" button simultaneously for 5 seconds to exit this function.



Attention

1. The transmission rod is un-enclosed. Use caution with cable management in this area. Do not relocate desk while in motion.
2. Power supply: AC100V-240V,50/60HZ
3. Service Environment: 0°C to 40°C
4. Unplug the power plug before cleaning, wipe the dust on surface with slight wet dishcloth when cleaning, be careful not to let the drops into the internal parts, do not loose the connector.
5. The electric box contains electronic components, metals, plastics, wires etc., so dispose of it in accordance with each country's environmental legislation, not with the general household waste.
6. Check carefully to ensure correct and complete assembly before using.
7. Be familiar with all functions and program settings of the product before first use.
8. Slight noise caused by the V-ribbed belt or brake system due to structure will not have any effect on the use of the equipment.
9. Corrosive or abrasive materials shouldn't be used to clean the equipment. Must ensure that the cleaner used will not pollute the environment.
10. This appliance can be used by children aged from 8 years and above and persons with reduced physical, sensory or mental capabilities or lack of experience and knowledge if they have been given supervision or instruction concerning use of the appliance in a safe way and understand the hazards involved. Children shall not play with the appliance.
11. Cleaning and user maintenance shall not be done by children without supervision.
12. If the supply cord is damaged, it must be replaced by the manufacturer.
13. Please make sure there is no hazardous sources in your operating environment. e.g., do not leave the tools around. Always be careful to keep the packaging materials in order to avoid any possible danger, e.g. plastic bag may lead to choking hazard to children.
14. Keep the original package of the equipment in case of future use in transportation. Always be careful to keep the packaging materials in order to avoid any possible danger, e.g. plastic bag may lead to choking hazard to children.
15. Keep the original package of the equipment in case of future use in transportation.

Waste disposal



This marking indicates that this product should not be disposed with other household wastes. To prevent possible harm to the environment or human health from uncontrolled waste disposal, recycle it responsibly to promote the sustainable reuse of material resources. To return your used device, please use the return and collection systems or contact the retailer where the product was purchased. They can take this product for environmental safe recycling.