



**INSTALLATION INSTRUCTIONS / OWNER'S MANUAL:
AUDIO MINI
OFF-ROAD SOUND SYSTEM FOR POLARIS RZR PRO XP / PRO XP 4 /
TURBO R / TURBO R 4 MODELS**

www.hoppeindustries.com
22667 FM 15 Troup, TX 75789
(262) 552-2770

Thank you for choosing the Hoppe *Audio Mini* off-road sound system. We hope you enjoy the off-road sound system, and we ask that you follow these instructions very closely. Doing so will save you time and ensure that your experience with the new *Audio Mini* is a positive one.

We strongly suggest that you read the complete instructions before beginning the installation process to eliminate the possibility of performing unnecessary work.

Having a safe and clean environment and using the proper tools is essential for a successful installation.

It is critical that proper eye wear, ear protection, and protective clothing is worn throughout the top installation.

When you receive your *Audio Mini* off-road sound system, please check to ensure that all parts and hardware are included. If there are any parts missing or if you have any questions concerning the system at this time call Hoppe at (262)-552-2770 Mon-Thur. 8am-5pm CST, or you can email us at tech@hoppeindustries.com.

Hoppe reserves the right to change specifications, equipment, or designs at any time without notice and without incurring obligation.

TABLE OF CONTENTS

SECTION 1 – <i>Tools Required</i>	4
SECTION 2 – <i>About your Audio Mini sound system</i>	4
2.1 Applicable Year Models:	4
2.2 Audio Equipment Details:.....	4
2.3 Warranty:	5
2.4 Care and Maintenance:	5
2.5 Warnings:.....	6
SECTION 3 – <i>Pre-Installation Inspection</i>	7
SECTION 4 – <i>Installation</i>	8



SECTION 1 – Tools Required

- Socket wrench set
- Combination wrench set
- Wire cutters

In addition to the above items, you may need shop supplies such as electrical tape, wire ties, thread locking compound, etc.


SECTION 2 – About your Audio Mini sound system

2.1 Applicable Year Models:

This *Audio Mini* off-road sound system is designed to fit the following Polaris RZR / RZR 4 models:

- 2020-2024 RZR Pro XP (all versions)
- 2020-2024 RZR Pro XP 4 (all versions)
- 2022-2024 RZR Turbo R (all versions)
- 2022-2024 RZR Turbo R 4 (all versions)
- All versions means it includes sub models such as Sport, Premium, Ultimate, LE.
- Does NOT fit any RZR Pro R models or 2024-newer RZR XP models.
- This system is compatible with most front full windshields and roofs.
- Accessories that mount overhead near the front of the roll cage such as rear view mirrors, wiper motors, etc. may not be compatible or may require modification. Contact Hoppe customer service for questions.

2.2 Audio Equipment Details:

Your *Audio Mini* off-road sound system is powered by  using their marine series audio equipment. This equipment is designed to function in all weather conditions with an IPX6 water resistance (powerful water jet) rating. The stereo is specifically engineered to provide excellent sound quality and volume in an open air environment so you can enjoy your music on the go.

To learn more details about your stereo system, you can access product information and manuals for the stereo equipment here:

- KMC2 receiver: <https://www.kicker.com/46KMC2>
- Speakers: <https://www.kicker.com/49KM604W>

You can feel free to crank up the volume without much worry of harming your system. However, it is wise to use a little common sense. If you hear any distortion, back off a little.

Use the equalizer settings in your KMC2 receiver to adjust the settings to your preferences.

2.3 Warranty:

Your *Audio Mini* comes equipped with a 1 year limited warranty covering the light, the stereo equipment, and the plastic enclosure. The date of warranty coverage will be determined by the registration date of the warranty card or online warranty registration.

<http://www.motortrike.com/TrikeAccWarranty.aspx>

If the warranty is not registered with Hoppe, the warranty period will begin when the *Audio Mini* was shipped from Hoppe's factory.

2.4 Care and Maintenance:

Your off-road sound system does not require any maintenance other than an occasional cleaning. To clean your audio system, simply hose off or power wash from a distance. If needed, use a mild automotive soap and sponge or brush. Use common sense. Do not use a high pressure power washer up close where it could cut, scar, or force water beyond the design intent of the enclosure, light, or stereo equipment.

There is an inline fuse, close to the end of the chassis harness where it connects to the busbar. It can be accessed by pulling the cap off of the fuse holder. There is also a mini 40 amp ignition relay built into the chassis harness next to the inline fuse. See Figure 1.

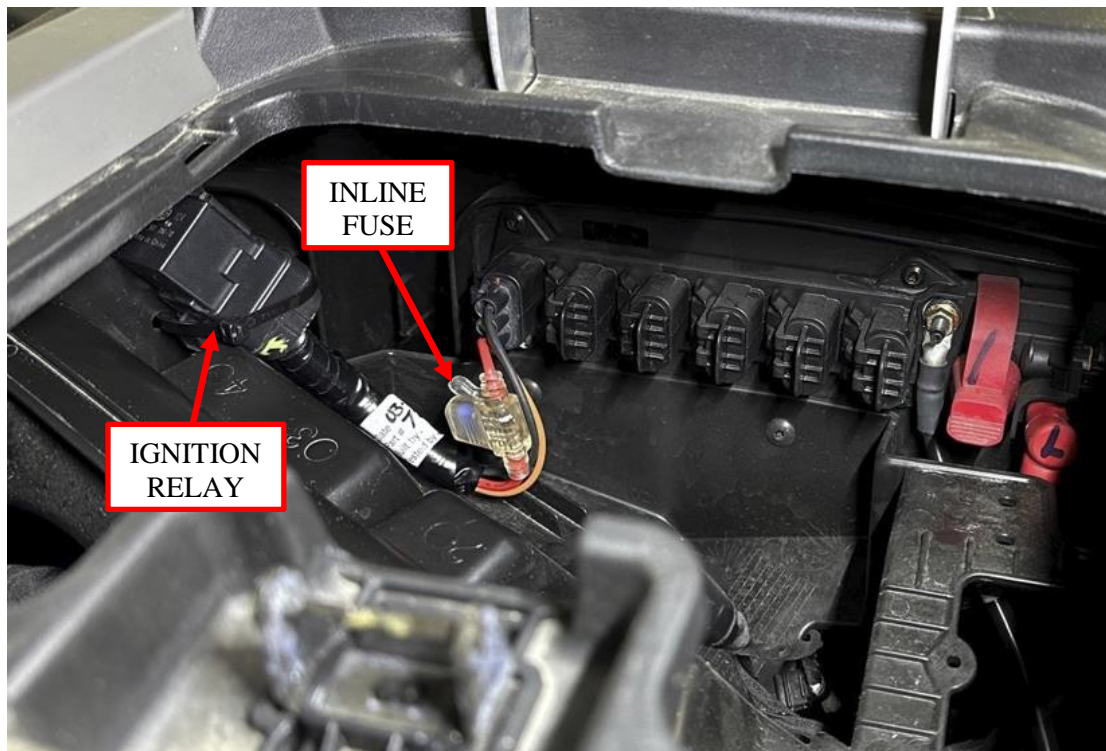


Figure 1: Fuse location.

- Fuse 1: 15 amp mini fuse for light / radio receiver power.

2.5 Warnings:

This off-road system adds up to 25 lbs. to your vehicle and is located up high on the roll cage. This increases the vehicle's center of gravity and changes the vehicle dynamics and handling characteristics. Use extra caution as you learn the driving characteristics of your vehicle with your new off-road sound system installed. High speed cornering, off camber or side hill, acceleration, and braking performance will be negatively impacted by the weight of the sound system.

Do not listen to your stereo at an uncomfortable volume for extended periods of time. Potential hearing loss may result.

SECTION 3 – Pre-Installation Inspection

Included in your off-road sound system are the following components:

- Pre-assembled *Audio Mini* off-road sound system (All speakers and electronics come preinstalled with interior wire harness.)
- Chassis wire harness
- Mounting brackets
- Hardware bag
- Zip ties

If any of the parts are missing, damaged, or you have any questions concerning them, please call Hoppe at (262)-552-2770 Mon-Thur. 8am-5pm CST.

In addition to accounting for all of the parts that you should receive with the top, you should inspect the vehicle in the following ways.

- Ensure that the vehicle is equipped with the factory roll cage, and the roll cage has not been bent out of shape in a roll over.
- Make sure the vehicle does not have any aftermarket accessories that are incompatible with the top.
- Make sure the battery is in good condition and holds a charge.
- Make sure the charging system is in good condition.

SECTION 4 – Installation

1. If you have a roof installed, it will need to be loose in the front or removed entirely, depending on mounting accessibility, for the installation of your *Audio Mini*.
2. Remove the factory flange nut from the inner driver's side bolt on the front cross member as indicated in Figure 2. The nut will be reused. Note: Driver side shown. (Passenger side similar)

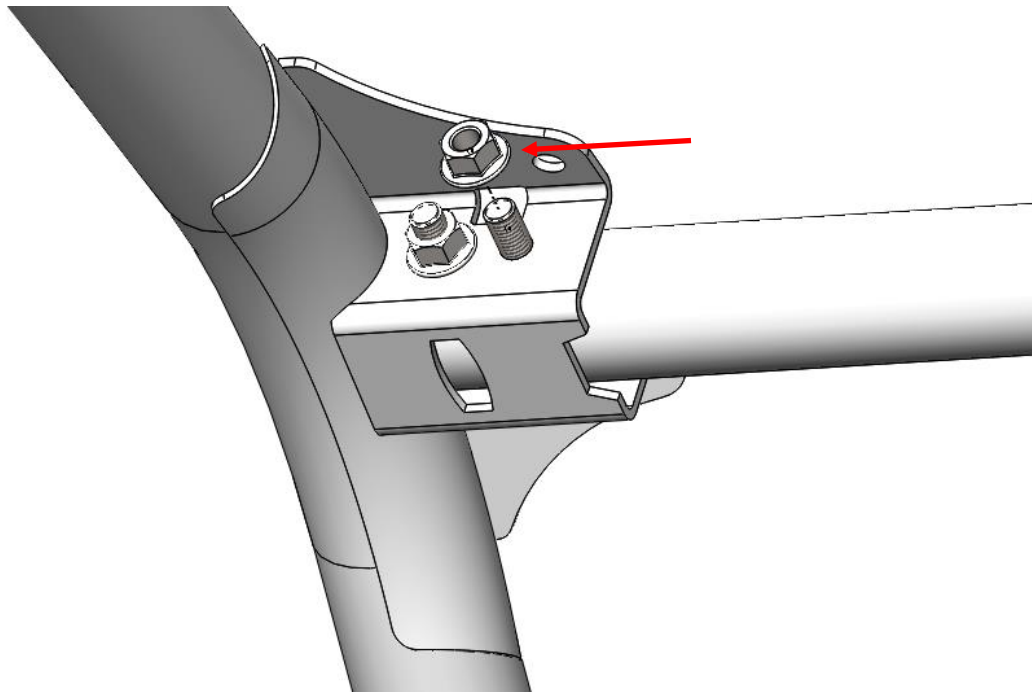


Figure 2: Remove the factory cross member nut. Driver side shown. (Passenger side similar)

3. Place the provided loop clamps in the approximate mounting locations on the outside roll bars. The *Audio Mini* brackets will mount to the loop clamps and be tightened in the following steps. Be aware of the orientation of the loop clamps on the cage. See Figure 3 and Figure 4.

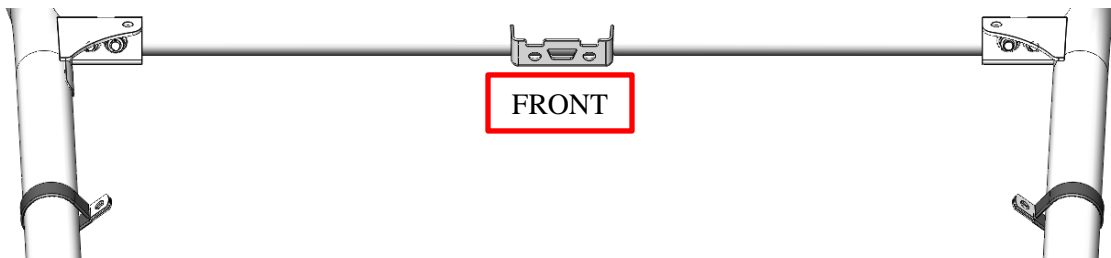


Figure 3: Loop clamp orientation on the cage.

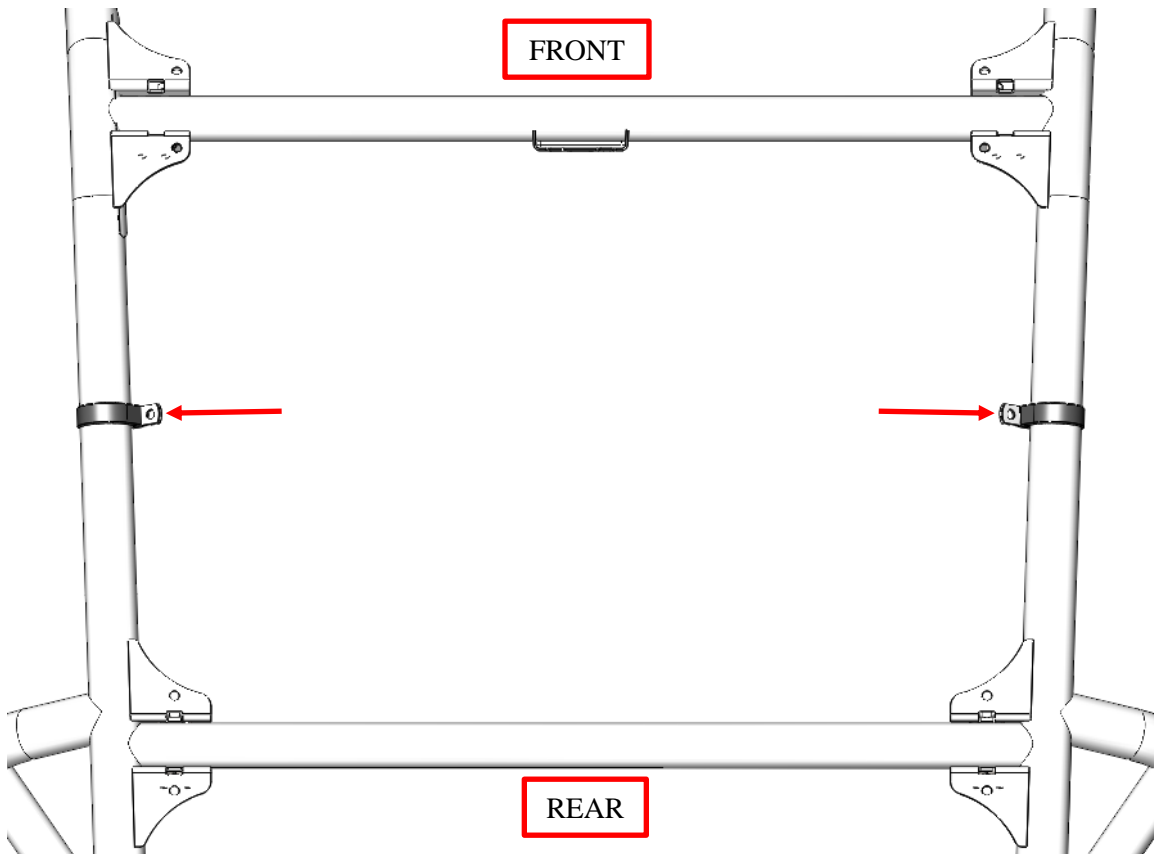


Figure 4: Approximate locations of the loop clamps.

4. Place the driver's side bracket on the driver's side inner cross member bolt. Use the factory nut from Step 2 to loosely tighten the bracket but allow for adjustment. It will be fully secured in the following steps. Verify correct orientation of the mounting bracket. See Figure 5. Note: Driver side shown. (Passenger side similar)

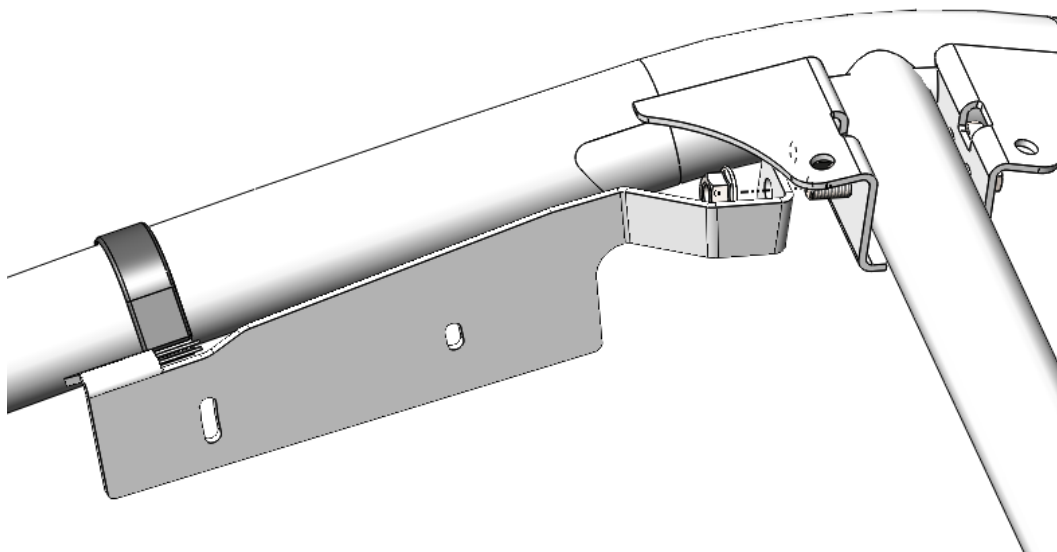


Figure 5: Mounting location of the *Audio Mini* bracket.

5. Use the supplied 3/8"-16 bolt, washers, and nyloc nut to secure the loop clamp to the mounting bracket. Loosely secure the nut, waiting to fully tighten it until the *Audio Mini* is in the desired position. See Figure 6. Note: Drive side shown. (Passenger side similar)

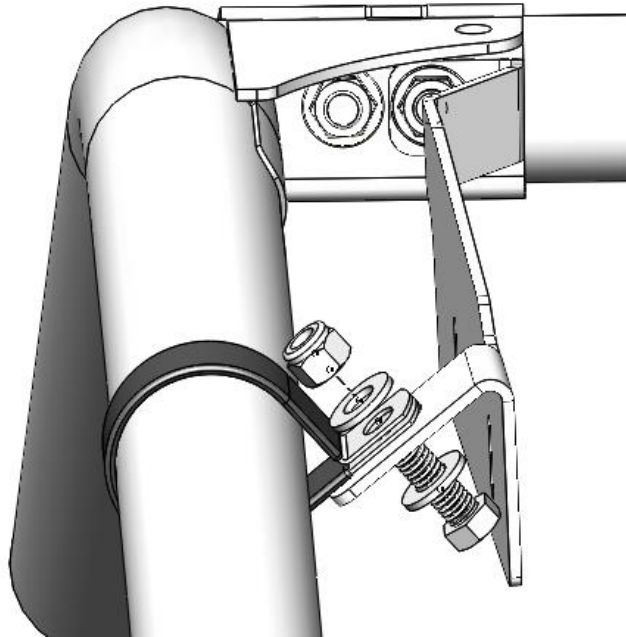


Figure 6: Mount the loop clamp to the bracket. Driver side shown. (Passenger side similar)

6. Repeat Steps 2, 4, and 5 for the passenger side bracket.
7. Using an assistant, hang the *Audio Mini* off-road sound system on the brackets using the supplied 1/4"-20 bolts and washers (loosely tightened). **Note: The sound system weighs up to 25 lbs. Since you will have to lift and bolt each end, it is helpful to have an assistant for this step.** See Figure 7 and Figure 8.

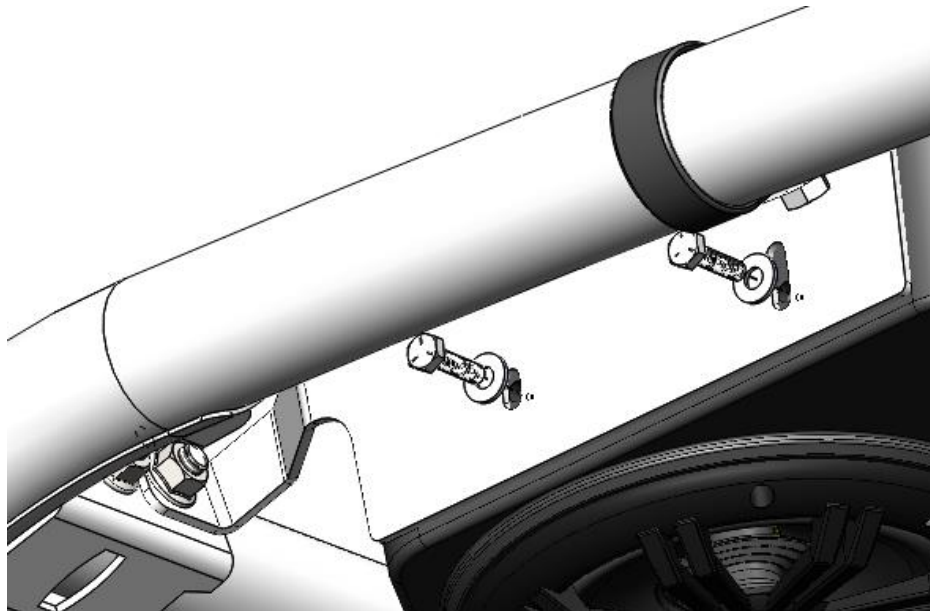


Figure 7: Install the 1/4"-20 bolts and washers to mount the *Audio Mini* to the brackets.



Figure 8: Loosely install the sound system on the mounting brackets.

8. Tighten the 4 mounting bracket bolts after achieving the desired viewing position relative to the roof or roll cage. A slot in the front hole allows up-down movement, while the rear hole allows the *Audio Mini* to pivot to achieve your desired viewing position. See Figure 9. Torque the bolts to 10 ft.-lbs.

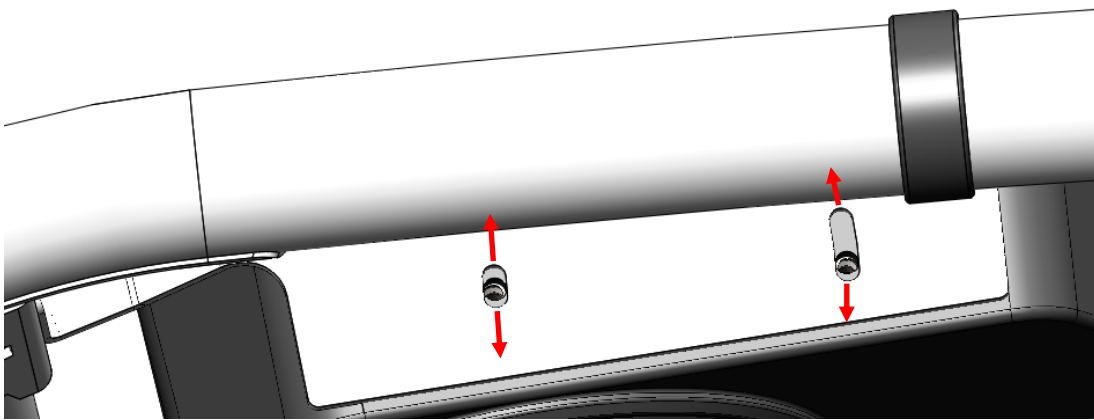


Figure 9: Adjustable positioning of the *Audio Mini*.

9. Once you have the *Audio Mini* in your desired position, tighten the two flange nuts on the front cage cross member. Torque the bolts to 40 ft.-lbs. See Figure 2.
10. Tighten both loop clamp bolts to secure them to the frame and the *Audio Mini* mounting brackets. See Figure 6. Torque the bolts to 25 ft.-lbs.
11. Open the center dash storage compartment by lifting up on the tab. See Figure 10.

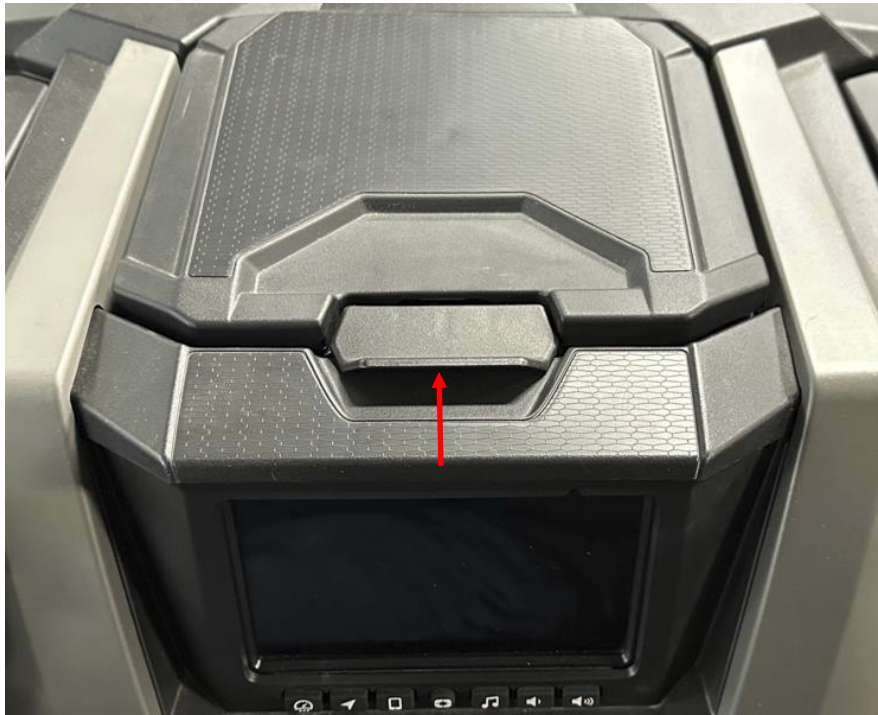


Figure 10: Open the center dash storage compartment.

12. Remove the storage compartment from the dash. Remove the grommet to pull the wire out of the storage compartment. See Figure 11.



Figure 11: Remove the storage compartment.

13. Plug the chassis harness into the factory accessory port on the busbar. Secure the relay upright as shown in Figure 12. Note: All accessory ports will power the unit, if you are already using any ports for other accessories.

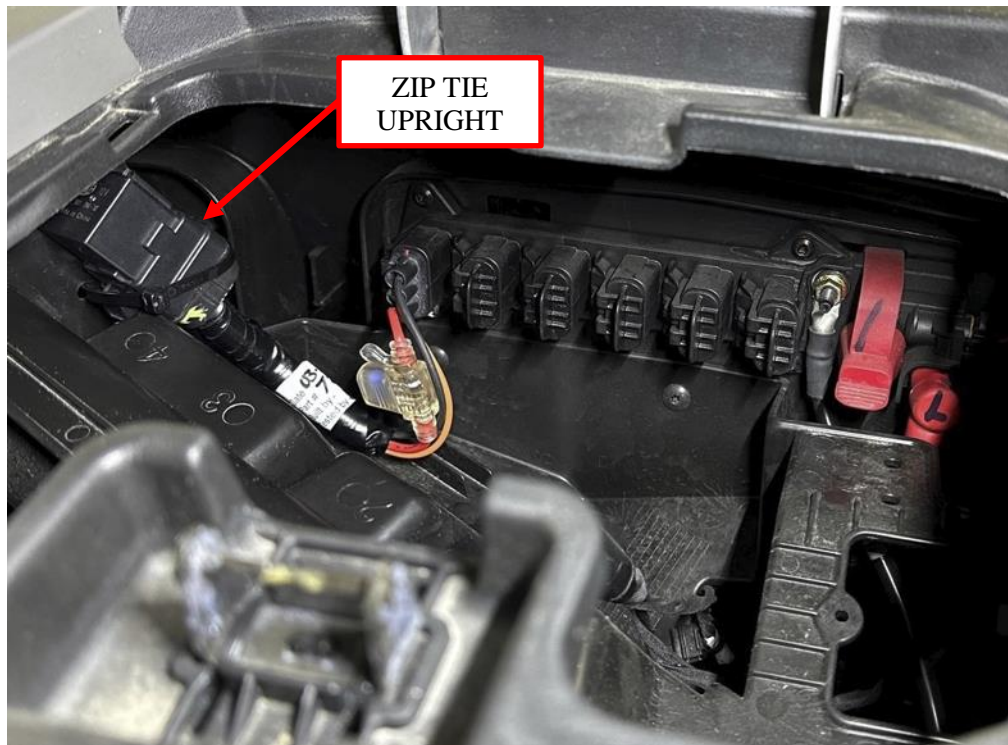


Figure 12: Accessory busbar connection and relay orientation.

14. Route the mating connector under the dash, with the factory harness, toward the opening at the base of the driver's front down tube (A-pillar). See Figure 13 and Figure 14.

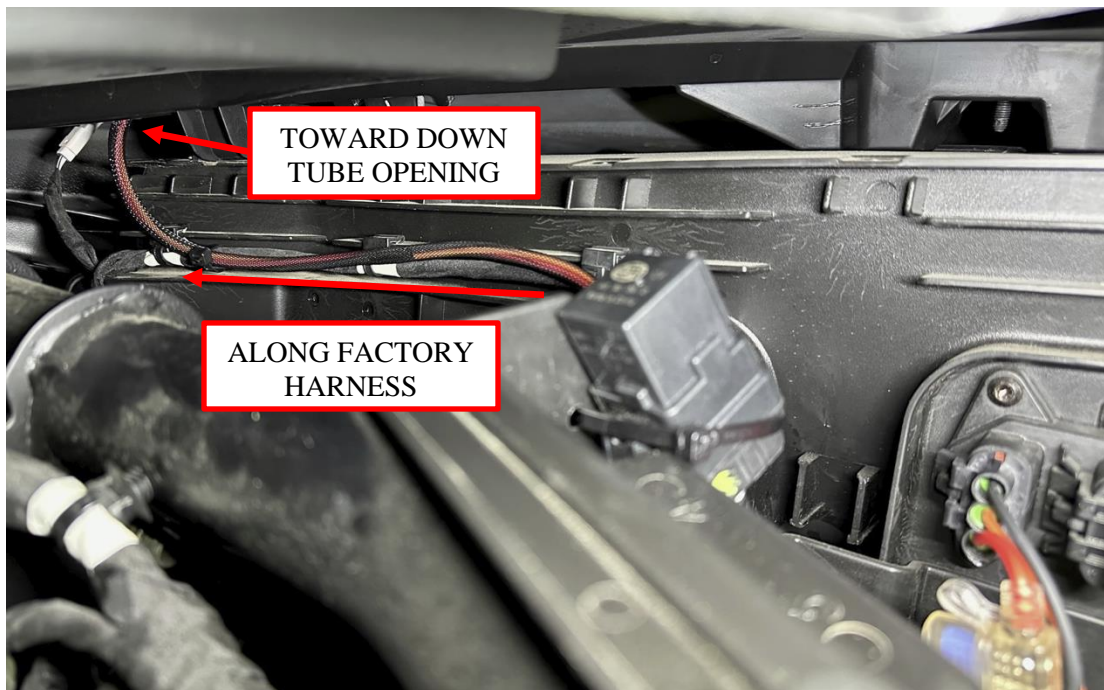


Figure 13: Chassis harness routing under dash toward front down tube opening.

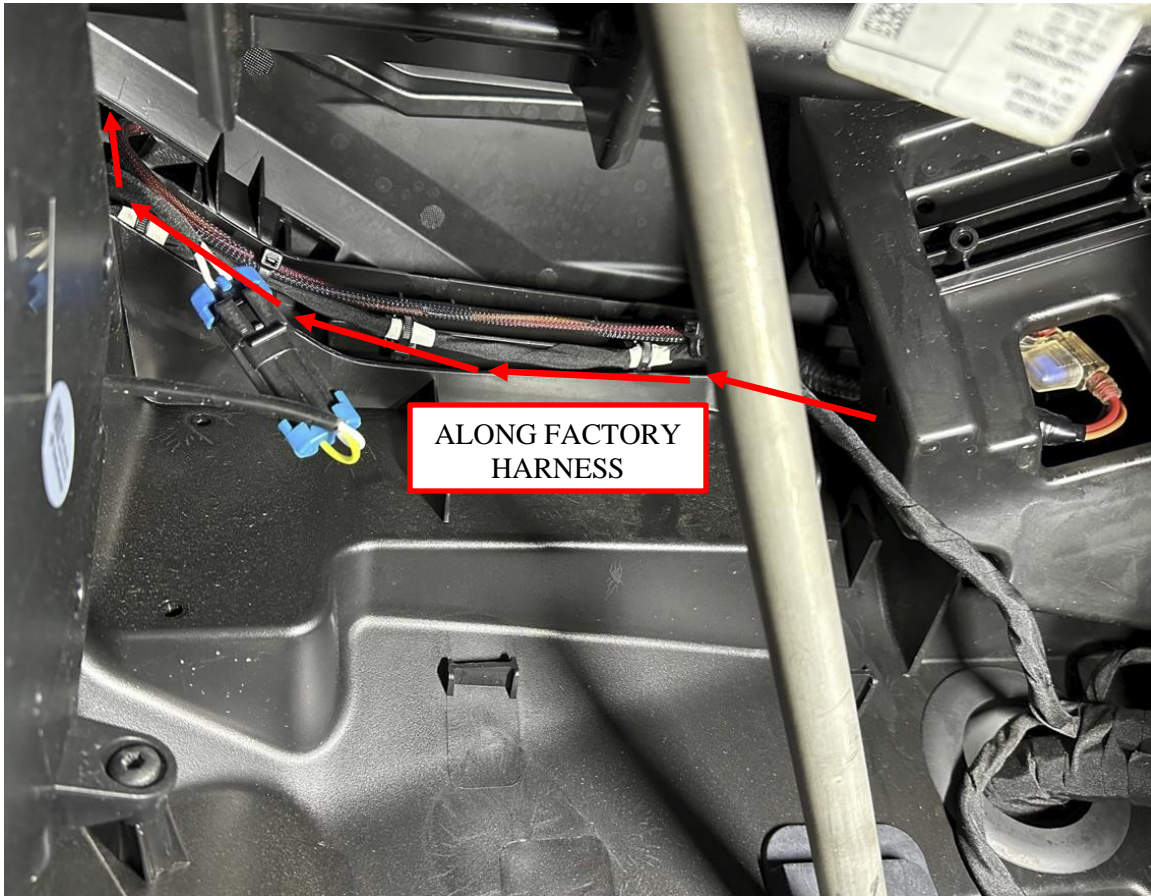


Figure 14: Chassis harness routing (view from driver's foot well under steering wheel).

15. Gently route the mating connector under the base of the A-pillar cover, then route the harness up the inside of the driver's A-pillar to the mating connector on the *Audio Mini*. Place zip ties and the zip tie base at indicated locations. Use the provided alcohol wipe to clean the cage before applying the zip tie base. See Figure 15 and Figure 16.

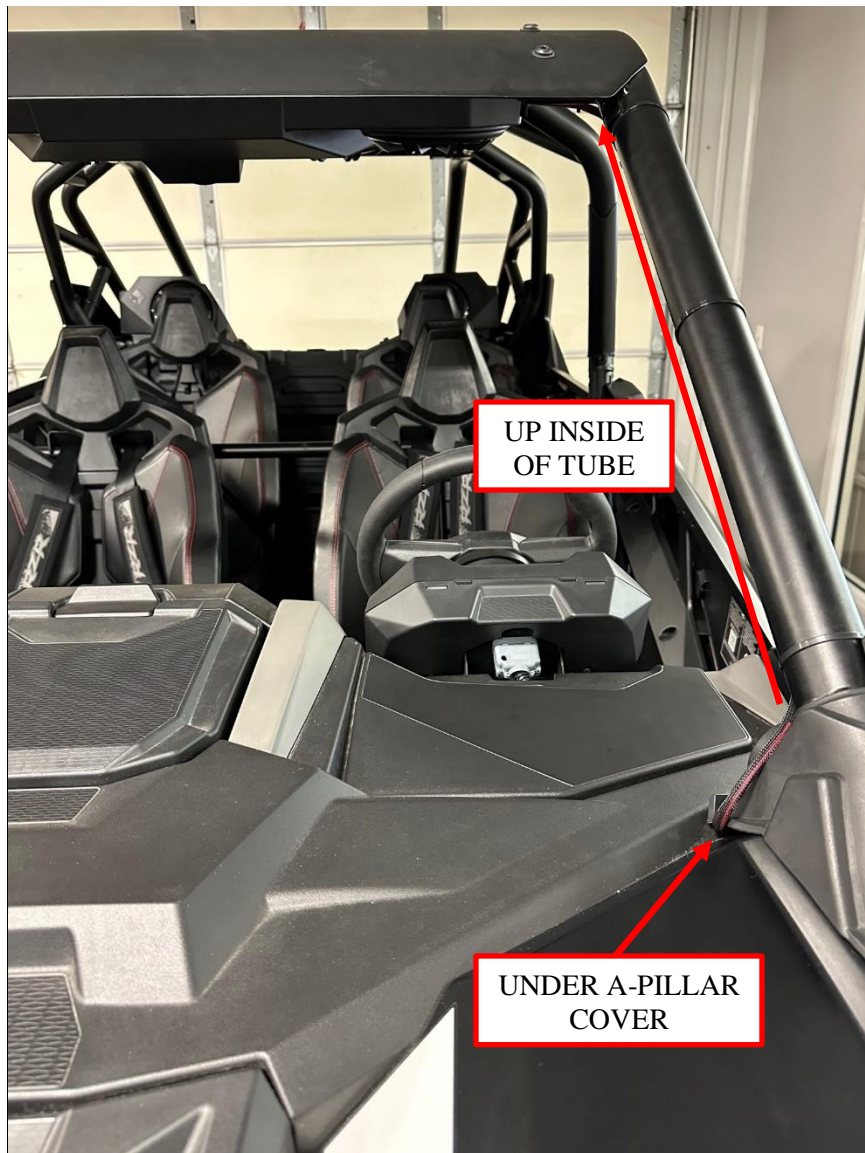


Figure 15: Harness routing path through opening up the A-pillar.

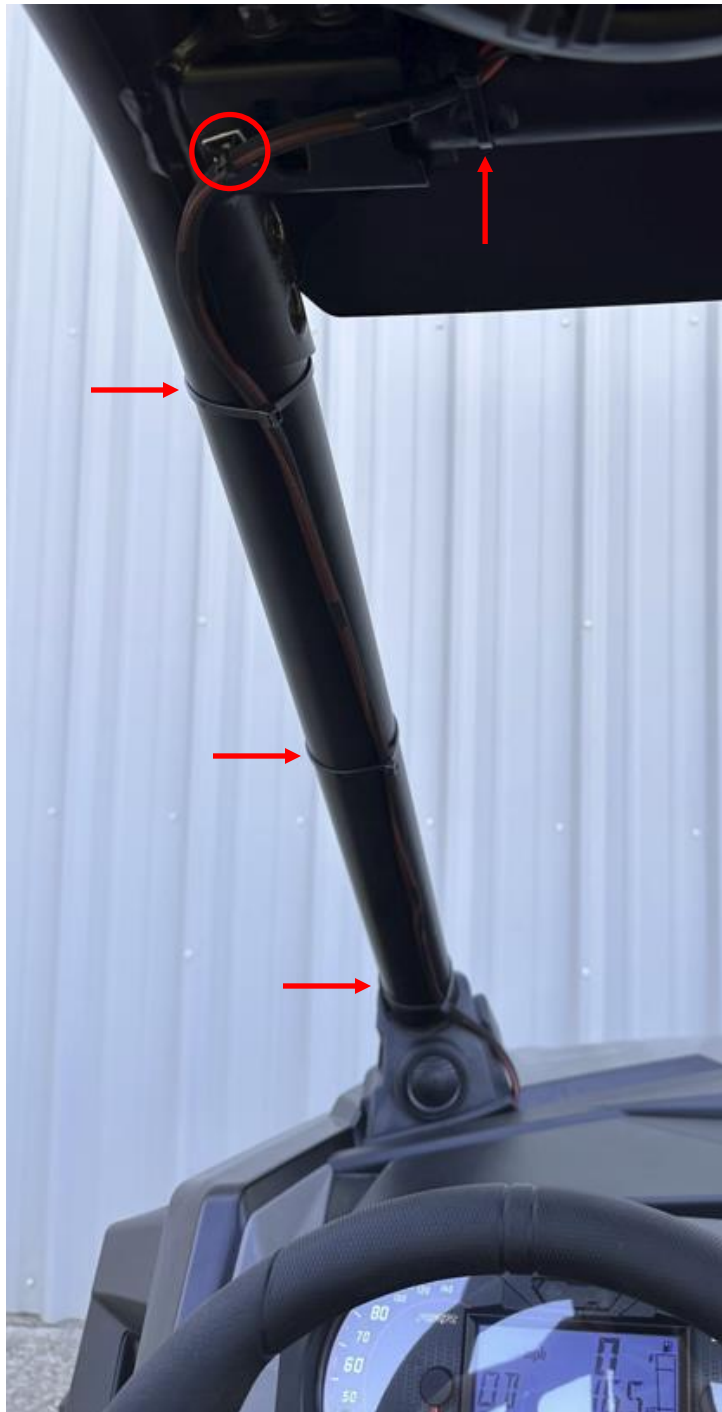


Figure 16: Harness A-pillar routing to the Audio Mini.

16. Tighten all zip ties, and secure the chassis harness to the factory harness under the dash.
17. Reinstall the rubber grommet and wire into the center dash storage compartment before installing it back in place. See Figure 11. Reinstall your roof if it was loosened or removed.

18. You are now ready to enjoy the music and lighting provided by your *Audio Mini* off-road sound system. Basic operation works as follows:

- Turn the vehicle ignition switch on to power up the stereo system. (You must press the power button for first time connections or if the power was previously turned off manually.)
- Press the source button on the stereo receiver to select the input source from AM/FM radio or Bluetooth.
- Press and hold the menu button to access the Device Settings menu.
 - Use the Volume knob to change the values for each setting, and press it to confirm the setting.
- Press and hold the Volume knob to access the Audio Settings menu.
 - Use the Volume knob to change the values for each setting, and press it to confirm the setting.
- The dome light can be used with or without the vehicle's ignition switch on. Press the on/off switch to activate the light. **Warning: Extended use of the dome light or stereo without the vehicle's charging system functioning will deplete the battery and the engine may not start.**

To learn about the more advanced features and operation of your stereo, visit the Kicker website links found in SECTION 2 – About your Audio Mini sound system of this document.

Thank you for choosing the Hoppe *Audio Mini* off-road sound system for your Polaris RZR UTV. We hope you enjoy your new sound system and lighting. We invite you, in your travels, to stop by our manufacturing plant in Troup, Texas, for a factory tour and to meet the people who designed and manufactured your *Audio Mini* off-road sound system. This will also give you an opportunity to check out our sister companies



and our extensive line of trike conversions, automotive, motorcycle, and power sports accessories.

We believe you will be impressed by what you witness and the people you will meet.