



Innovative Water Solutions



FILTRATION & WATER DISPENSING SPECIALISTS
PRODUCT CATALOG 2024

We are passionate about water.

Based in Southern California, Brio Water Technology is an industry leader that offers a wide range of exclusive and innovative products. From modern coolers to advanced residential, commercial, and industrial filtration systems, we strive to service all your hydration needs. Brio Water Technology is proud to be your partner in the water industry.



Table of Contents

Brio Residential Water Coolers	4
Brio Commercial Water Coolers	30
Brio Commercial Ice Machines & Dispensers	46
Brio Residential Filtration Systems	54
Brio Whole House Systems	70
Brio Commercial Filtration Systems	82
Brio Industrial RO Systems	96
Replacement Filters & Accessories	104

Available Online

Quick Connects

Water Bottles

GEO Glass Bottles

GEO Stainless Steel Bottles

GEO Plastic Water Bottles

GEO Crocks & Stands

Water Bottle Stands & Accessories



Scan to View
Online Catalog



Innovation & Advancement

As an industry leader, we continually strive to create and innovate the most advanced clean water solutions on the planet. Whether it's groundbreaking autofill technology, intuitive touchless dispensing, on-demand ice and coffee with water dispensing, or IoT solutions that precisely track maintenance and data, at Brio our goal is to exceed expectations.

Commercial Filtration Solutions

Brio offers commercial grade filtration solutions for a wide range of water purification needs. They feature the latest in filtration technology and are designed to exceed every expectation.



Brio ROust PRO 500 GL is a 500 GPD RO system with remineralization, producing the best water for coffee.



G20-U offers 4 stages of filtration with an efficient 2:1 pure-to-waste ratio.

Residential Filtration Solutions

Engineered to provide powerful and robust filtration, our advanced residential filtration solutions lead the industry and work seamlessly with an array of applications.

Industrial Filtration Solutions

Brio creates turnkey solutions for industrial water challenges. These innovative filtration systems are used in many applications, including food & beverage, dairies & farms, water bottling, steam boilers, manufacturing, and more.



Brio MO6 Industrial RO system produces 36,000 to 50,000 gallons of purified water per day.

Brio
RESIDENTIAL
WATER
COOLERS



At Brio Water Technology, we create coolers that feature the latest technological and aesthetic advancements in the industry. With an innovative approach and a desire to be the very best, our water filtration methods and user experience are unmatched. Discover our entire line-up of residential coolers, guaranteed to satisfy every customer's needs.





MODERNA 730 SERIES

The elegantly engineered Brio Moderna 730 Series has innovative features and advancements. The user-friendly 11.5" dispense height allows you to refill large bottles/glasses with ease, and a larger solenoid valve means the dispense rate is 2X faster. Plus, it also has an extra large drip tray, built-in night light, and convenient self-cleaning technology.

COOLER SPECIFICATIONS

Item No.	CLBL730SC	CLPOU730UVF3	CLPOU730UVR04
Model	Bottom Load	POU 3-Stage	POU 4-Stage RO
Water Temp.		● ● ●	
Flow Rate		1 GPM	
Product Dim. (W x D x H)		12.2" x 13.4" x 41"	
Packing Dim. (W x D x H)		14" x 15.2" x 43.9"	
Net Weight		39.8 lb	
Pallet Qty.		18 PCS.	
Container Qty.		456 PCS.	

TANK SPECIFICATIONS

	COLD TANK	HOT TANK	POWER SUPPLY
Tank Volume	3.6 L	1.6 L	AC 115 V / 60 HZ
Capacity	2.5 LPH (≤50 °F)	4 LPH (≥185 °F)	
Power	100 W	420 W	
Method	Compressor	Heating Coil	



Fastest Dispense

2X Fast Dispense can fill a 28 oz. bottle in less than 15 seconds.



Digital Display

Bright digital display stays lit enabling easy cooler operation.

INNOVATIVE & USER-FRIENDLY

This advanced unit has been designed with features that elevate your user experience, from a larger dispense height to a digital display.

- Advanced digital display & touch panel** (Icon: LED display)
- Self-cleaning** (Icon: Spray nozzle)
- Fastest dispensing** (Icon: Water tap)
- Food-grade 304 stainless steel** (Icon: Plus sign in a circle)
- 11.5" dispense height** (Icon: Four arrows pointing outwards)
- Expanded drip tray** (Icon: Drip tray)
- UL LISTED** (Icon: UL logo)

Choose the model that fits your application:



Bottom Load CLBL730SC
POU 3-Stage CLPOU730UVF3
POU 4-Stage RO CLPOU730UVRO4



Cooler Base

- Adds 9.3" of height to your cooler
- Sturdy design with grip feet
- Seamless design to match the cooler
- Custom fit for bottle and POU models

ACWC730
16" W x 16" D x 9.3" H
4.8 lb
Pallet Qty.: 42 PCS.



730 MODERNA + CAFÉ

The 730 Moderna + CAFÉ 2-in-1 Refreshment Station provides freshly brewed coffee and water. Featuring a sleek modern design with premium stainless steel construction, the Moderna + CAFÉ is a single-serve coffee maker and dispenses hot and cold water. Plus, with an 11.5" dispense height and 2X fast pour capabilities, tall glasses and pitchers fit easily and fill faster.

COOLER SPECIFICATIONS

Item No.	CLBL730SCCF	CLPOU730UVF3CF	CLPOU730UVRO4CF
Model	Bottom Load	POU 3-Stage	POU 4-Stage RO
Cleaning System	UV-Care	UV-Care	UV-Care
Water Temp.		● ●	
Flow Rate		1 GPM	
Product Dim. (W x D x H)		12.2" x 13.4" x 41"	
Packing Dim. (W x D x H)		14" x 15.2" x 43.9"	
Net Weight		37.91 lb	
Pallet Qty.		9 PCS.	
Container Qty.		456 PCS.	

TANK SPECIFICATIONS

	COLD TANK	HOT TANK	POWER SUPPLY
Tank Volume	3.6 L	1 L	AC 115 V / 60 HZ
Capacity	2 LPH (≤50 °F)	6 LPH (≥185 °F)	
Power	100 W	700 W	
Method	Compressor	Heating Coil	



Freshly Brewed

Use your favorite coffee capsule and get the best-tasting hot cup of joe with a push of a button.

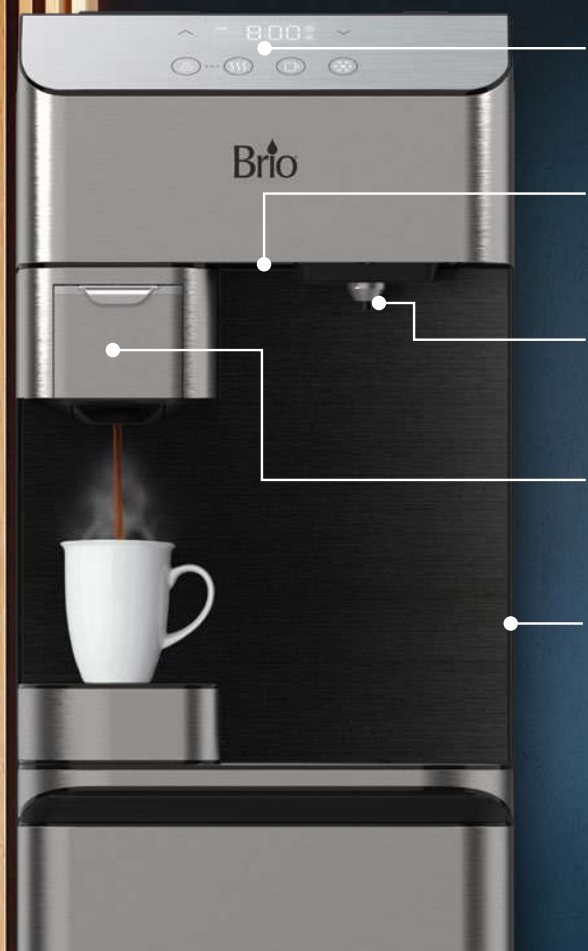







Fastest Dispense

2X Fast Dispense can fill a 28 oz. bottle in less than 15 seconds.

Moderna + CAFÉ

2-in-1 Refreshment Station



-  Advanced digital display & touch panel
-  Bright LED night light
-  Fastest dispense
-  Single-serve coffee maker
-  Tall 11.5" dispense height



Brews 6, 8 and 10 oz. servings.

Choose the model that fits your application:



Bottom Load
CLBL730SCCF



POU 3-Stage
CLPOU730UVF3CF



POU 4-Stage RO
CLPOU730UVRO4CF



Cooler Base

- Adds 9.3" of height to your cooler
- Sturdy design with grip feet
- Seamless design to match the cooler
- Custom fit for bottle and POU models

ACWC730
16" W x 16" D x 9.3" H
4.8 lb
Pallet Qty.: 42 PCS.



720 MODERNA + ICE

The best of both worlds—the Brio Moderna Ice Dispenser & Water Cooler dispenses ice and water. Effortlessly enjoy up to 24.6 lb. of ice per day, piping hot water, and refreshing cold water—all at the press of a button. Plus, with a 10.5" dispense height and larger solenoid valve, tall glasses and pitchers fit easily and fill quicker than ever before.

COOLER SPECIFICATIONS

Item No.	CLBL720SCIC	CLPOU720UVF3IC	CLPOU720UVRO4IC
Model	Bottom Load	POU 3-Stage	POU 4-Stage RO
Water Temp.		● ●	
Flow Rate		0.65 GPM	
Ice Capacity		24.6 lb per day	
Product Dim. (W x D x H)		12.2" x 17.1" x 43.3"	
Packing Dim. (W x D x H)		14.7" x 20.7" x 47.3"	
Net Weight		57.32 lb	
Pallet Qty.		6 PCS.	
Container Qty.		278 PCS.	

TANK SPECIFICATIONS

	COLD TANK	HOT TANK	POWER SUPPLY
Tank Volume	5 L	0.8 L	AC 115 V / 60 HZ
Capacity	3 LPH (≤50 °F)	4 LPH (≥185 °F)	580 W
Method	Compressor	Heating Coil	



Dispense On The Double

Rapidly fills glasses and sports bottles to quickly satisfy thirsty households and offices.



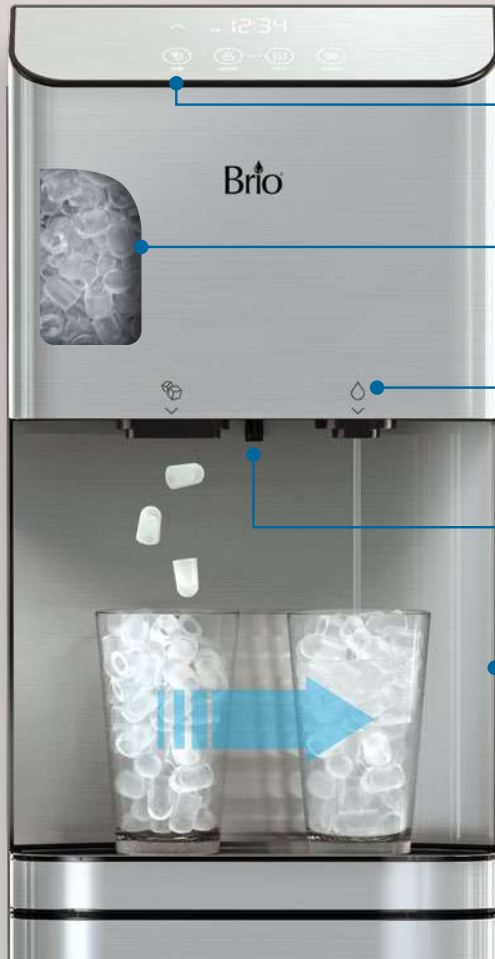
Digital Display

Clearly see temperature and time with bright display. Touch panel allows for easy dispensing.

KEY FEATURES

Moderna + ICE

Ice On Demand + Fast Dispense



Ice on demand



2.5 lb of ice storage capacity



Fastest dispense



Bright LED night light



10.5" dispense height



Creates 24.6 lb of ice per day.

Choose the model that fits your application:



Bottom Load
CLBL720SCIC



POU 3-Stage
CLPOU720UVF3IC



POU 4-Stage RO
CLPOU720UVRO4IC



Cooler Base

- Adds 9.3" of height to your cooler
- Sturdy design with grip feet
- Seamless design to match the cooler
- Custom fit for bottle and POU models

ACWC720ICE

16" W x 22.7" D x 9.3" H

5.3 lb

Pallet Qty.: 42 PCS.

moderna™



MODERNA COUNTERTOP

The sleek and versatile Brio Moderna Countertop Cooler features an attractive design that will elevate any décor. Despite its compact dimensions, it features a large 11-inch dispense height that makes filling large bottles effortless. Plus, it is also equipped with an electronic solenoid valve that dispenses swiftly and tri-temperature controls.



Fastest Dispense

Equipped with larger solenoid valve, it can fill up 28 oz. bottle in less than 15 seconds.



Compact Design with Side-Loading

Conveniently fits under most cabinets, and features easy side-loading design.

COUNTERTOP COOLER SPECIFICATIONS

Item No.	CLCTPOU820UVF2
Model	Counter POU
Cleaning System	Hot Water Sterilization
Water Temp.	● ● ●
Flow Rate	0.91 GPM
Product Dim. (W x D x H)	13.2" x 17.9" x 17.4"
Packing Dim. (W x D x H)	14.9" x 20.5" x 20.6"
Net Weight	30 lb
Pallet Qty.	32 PCS.
Container Qty.	864 PCS.

FILTER SPECIFICATIONS



Item No.	MIB200PKF
Stage 1	Sediment
Stage 2	Carbon Block

See page 106 for cartridge specs.

TANK SPECIFICATIONS

	COLD TANK	HOT TANK	POWER SUPPLY
Tank Volume	3 L	1 L	AC 115 V / 60 HZ
Capacity	2.5 LPH (≤50 °F)	4 LPH (≥185 °F)	
Power	–	420 W	
Method	Compressor	Heating Coil	

KEY FEATURES

Sleek form. Versatile function.



Child safety lock



Bright LED night light



Fastest dispense



Large dispense area,
11" dispense height



HOT CLEAN STERILIZATION

The dispenser circulates hot water already in the system to thoroughly clean reservoirs and internal components.

moderna™



KEY FEATURES



Tri-Temperature Dispensing

Enjoy hot (3 levels), room, and cold (3 levels) water on demand.



Cooler Base

- Adds 9.3" of height to your cooler
- Sturdy design with grip feet
- Seamless design to match the cooler
- Custom fit for bottle and POU models

ACWC3457

16" W x 16" D x 9.3" H

4.7 lb

Pallet Qty.: 42 PCS.

MODERNA 720 SERIES

The Brio 720 Premier Series features modern technology, including a touch sensitive panel that allows for effortless water temperature customization. The bright LED screen clearly displays desired water temperature, and it also has a convenient digital clock.

OUR MOST VERSATILE LINE-UP, CHOOSE FROM:



Bottom Load



POU



Countertop



Stand Up



Stainless Steel



Black Stainless Steel



Touch Dispense



Touchless Dispense



COOLER SPECIFICATIONS

	Item No. Color	CLBL720SC Stainless Steel	CLPOU720UVF3 Stainless Steel	CLPOU720UVRO4 Stainless Steel	CLCTPOU720UVF3 Stainless Steel
	Item No. Color	CLBL720SCBLK Black Stainless Steel	CLPOU720UVF3BLK Black Stainless Steel	CLPOU720UVRO4BK Black Stainless Steel	CLCTPOU720UVF3B Black Stainless Steel
	Item No. Color	CLBL720SCX Stainless Steel	CLPOU720UVF3X Stainless Steel	CLPOU720UVRO4X Stainless Steel	CLCTPOU720UVF3X Stainless Steel
	Item No. Color	CLBL720SCXBLK Black Stainless Steel	CLPOU720UVF3XB Black Stainless Steel		CLCTPOU720UV3XB Black Stainless Steel
Model		Bottom Load	POU 3-Stage	POU 4-Stage RO	Countertop POU 3-Stage
Cleaning System		Ozone	UV Care	UV Care	UV Care
Water Temp.		● ● ●	● ● ●	● ●	● ● ●
Flow Rate		0.32 GPM	0.32 GPM	0.32 GPM	0.32 GPM
Product Dim. (W x D x H)		12.2" x 13.4" x 40.9"	12.2" x 13.4" x 40.9"	12.2" x 13.4" x 40.9"	12.5" x 18.5" x 19.3"
Packing Dim. (W x D x H)		14.2" x 17.3" x 43.7"	14.2" x 17.3" x 43.7"	14.2" x 17.3" x 43.7"	14" x 17.5" x 23.5"
Net Weight		46.5 lb	46.5 lb	46.5 lb	34.8 lb
Pallet Qty.		18 PCS.	18 PCS.	18 PCS.	24 PCS.
Container Qty.		432 PCS.	432 PCS.	432 PCS.	864 PCS.

FILTER SPECIFICATIONS

Item No.		MIB300PKF		MIB400PKRO
Stage 1		Sediment		Sediment
Stage 2		Pre Carbon		Pre Carbon
Stage 3		Carbon Block		RO Membrane
Stage 4				Post Carbon

TANK SPECIFICATIONS

COLD TANK		HOT TANK		POWER SUPPLY
Tank Volume	3.6 L	Tank Volume	1 L	AC 110-120V 50HZ/60HZ
Capacity	2.5 LPH (39–59 °F)	Capacity	4 LPH (174–194 °F)	
Consumption	100 W	Consumption	420 W	
Cooling Method	Compressor	Heating Method	Heating Coil	



600 SERIES

Practical and stylish, the Brio 600 Series offers a modern design with powerful internal components. It features a simple and intuitive touch panel* to dispense water quickly and effortlessly. Plus, it is equipped with stainless-steel reservoirs to protect water purity and maintain temperature, ensuring hot and cold purified water is always ready.



Slim Design & Large Dispense

Ideal for smaller spaces. Large dispense area allows for larger cups and bottles.



Touch Panel

Touch panel* offers simple and easy water dispensing.



Easy to Clean

Made with durable and easy-to-clean materials.



Child Safety Lock

Hot water safety lock keeps the family safe from accidental burns.



Commercial Compressor

High-quality internal components offer optimal performance.



*Touch panel on CLBLT620 models only.



CLTL620WHT
AVAILABLE COLORS



CLBL620BLK
AVAILABLE COLORS



CLBLT620
AVAILABLE COLORS



COOLER SPECIFICATIONS

Item No. / Color	CLTL620 / Stainless Steel	CLBL620 / Stainless Steel	CLBLT620 / Stainless Steel
	CLTL620BLK / Black	CLBL620BLK / Black	CLBLT620BLK / Black
	CLTL620WHT / White	CLBL620WHT / White	CLBLT620WHT / White
Model	Top Load	Bottom Load	Bottom Load
Dispense Method	Mechanical	Mechanical	Touch Panel
Water Temp.	● ● ●	● ● ●	● ● ●
Flow Rate	C: 0.66 GPM / H: 0.48 GPM	C: 0.66 GPM / H: 0.48 GPM	C: 0.66 GPM / H: 0.48 GPM
Product Dim. (W x D x H)	11.8" x 14" x 41.7"	11.8" x 14" x 41.7"	11.8" x 14" x 41.7"
Packing Dim. (W x D x H)	13.8" x 15" x 51"	13.8" x 15" x 51"	13.8" x 15" x 51"
Net Weight	34.3 lb	39.7 lb	39.7 lb
Pallet Qty.	18 PCS.	18 PCS.	18 PCS.
Container Qty.	432 PCS.	432 PCS.	432 PCS.

TANK SPECIFICATIONS

COLD TANK		HOT TANK		POWER SUPPLY	
Tank Volume	3.6 L	Tank Volume	1.2 L	AC 110-120V 50HZ/60HZ	
Cool Output	2 LPH	Hot Output	4.5 LPH		
Cooling Power	85 W	Heating Power	450 W		
Cooling Method	Compressor	Heating Method	Heating Coil		



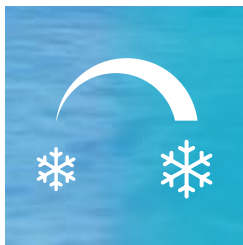
530 SERIES

Perfect for home or office, the Brio 530 Series is technologically advanced and durable. It is constructed with 304 stainless steel and high-quality internal components to withstand heavy use. Plus, the 530 Series features 2X Fast Dispense technology, UV Care, and a tall 13.5" access height to fill large bottles easily.



Fastest Dispense

2X Fast Dispense can fill a 28 oz. bottle in less than 15 seconds.



Adjustable Cold Temp

Control the cold water tank temperature setting until desired temperature is reached.

COOLER SPECIFICATIONS

Item No.	CLBL530SC	CLPOU530UVF3	CLPOU530UVRO4
Model	Bottom Load	POU 3-Stage	POU 4-Stage RO
Water Temp.		● ● ●	
Flow Rate		C: 0.71 GPM / H: 0.39 GPM	
Product Dim. (W x D x H)		11.81" x 14.37" x 43"	
Packing Dim. (W x D x H)		13.8" x 16.1" x 46.14"	
Net Weight		37 lb	
Pallet Qty.		9 PCS.	
Container Qty.		456 PCS.	

TANK SPECIFICATIONS

	COLD TANK	HOT TANK	POWER SUPPLY
Tank Volume	3.7 L	1.0 L	AC 110 V / 50/60 HZ
Capacity	2.2 LPH (≤50 °F)	7.5 LPH (≥165 °F)	
Power	85 W	450 W	
Method	Compressor	Heating Coil	

ADVANCED ENGINEERING

Thoughtfully engineered with innovative technology and intuitive features for a better user experience.

Child safety lock

Tri-temp dispensing

Food-grade 304 stainless steel

Improved dispense rate

40 oz Tumbler

13.5" dispense height

Expanded drip tray

UL LISTED

Intertek 5007289

CONFORMS TO NSF/ANSI 372

Choose the model that fits your application:



Bottom Load
CLBL530SC



POU 3-Stage
CLPOU530UVF3



POU 4-Stage RO
CLPOU530UVRO4



Cooler Base

- Adds 9.3" of height to your cooler
- Sturdy design with grip feet
- Seamless design to match the cooler
- Custom fit for bottle and POU models

ACWC530

15.5" W x 16" D x 9.3" H

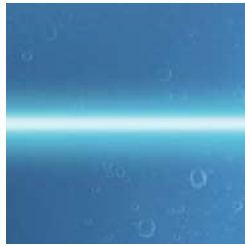
4.7 lb

Pallet Qty.: 42 PCS.



520 SERIES

The Brno 520 Series is available in bottom load, top load, and POU (stand up/countertop) models. They are equipped with high-quality stainless-steel tanks that protect water purity and maintain water temperature, and feature tri-temp dispensing for effortless access to hot, cold, and room temperature water. The bottom load and POU models also have self-cleaning technology to ensure your cooler remains sanitized throughout daily use.



UV Care

LED technology disinfects and sanitizes automatically.



Cooler Base

- Adds 9.3" of height to your cooler
- Sturdy design with grip feet
- Seamless design to match the cooler

ACWC3457

16" W x 16" D x 9.3" H / 4.7 lb

Pallet Qty.: 42 PCS.



Easy to Clean

Made with durable and easy-to-clean materials.



Child Safety Lock

Hot water safety lock keeps the family safe from accidental burns.



Stainless-Steel Tanks

Provide water purity protection & maintain water temperatures longer.



CONFORMS TO
NSF/ANSI 372

AVAILABLE COLORS



BOTTLED COOLER SPECIFICATIONS

POU COOLER SPECIFICATIONS

Item No.	CLBL520SC CLBL520SCBLK	CLTL520 CLTL520BLK	CLCTTL520 CLCTTL520BLK	CLPOU520UVF2 CLPOU520UVF2BLK	CLPOU520UVF4 CLPOU520UVF4BLK CLPOU520UVRO4 CLPOU520UVRO4B	CLCTPOU520UVF2 CLCTPOU520UVF2BLK
Model	Bottom Load	Top Load	Counter Top Load	POU 2-Stage	POU 4-Stage UF/RO	Counter POU 2-Stage
Cleaning System	UV-CARE	N/A	N/A	UV-CARE	UV-CARE	UV-CARE
Water Temp.	● ● ●	● ● ●	● ● ●	● ● ●	● ● ●	● ● ●
Flow Rate	0.39 GPM	0.39 GPM	0.39 GPM	0.39 GPM	0.39 GPM	0.39 GPM
Product Dim.	40.5" x 12" x 13.5"	38.5" x 12" x 13.5"	15.5" x 12" x 20.5"	40.5" x 13.5" x 12"	40.5" x 13.5" x 12"	19.5" x 19" x 12"
Packing Dim.	44.9" x 17.2" x 14.2"	41.6" x 15.2" x 14"	17.5" x 15" x 23.5"	45.5" x 17.5" x 14.5"	44.8" x 16.9" x 14.2"	30" x 18.5" x 18"
Net Weight	44.4 lb	34.3 lb	29.1 lb	49 lb	49.8 lb	35.2 lb
Pallet Qty.	18 PCS.	18 PCS.	24 PCS.	18 PCS.	18 PCS.	24 PCS.
Container Qty.	432 PCS.	432 PCS.	576 PCS.	432 PCS.	432 PCS.	576 PCS.

FILTER SPECIFICATIONS

Item No.		MIB200PKF		MIB400PKUF		MIB400PKRO
Stage 1		Sediment		Sediment		Sediment
Stage 2		Carbon Block		Pre Carbon		Pre Carbon
Stage 3				UF Membrane		RO Membrane
Stage 4				Post Carbon		Post Carbon

TANK SPECIFICATIONS

COLD TANK		HOT TANK		POWER SUPPLY
Tank Volume	3.1 L	Tank Volume	1 L	AC 110-120V 50HZ/60HZ
Cool Output	2 LPH	Hot Output	4 LPH	
Cooling Power	100 W	Heating Power	420 W	
Cooling Method	Compressor	Heating Method	Heating Coil	



430 SERIES

The advanced Brio 430 Series combines form and function. It is constructed with food-grade 304 stainless steel and durable internal components to withstand heavy use. Plus, the 430 Series has innovative and intuitive features, including 2X Fast Dispense technology and a tall 10.5" access height, for an elevated user experience in the home or office.

COOLER SPECIFICATIONS

Item No.	CLBL430SC	CLPOU430UVF3	CLPOU430UVRO4
Model	Bottom Load	POU 3-Stage	POU 4-Stage RO
Water Temp.		● ● ●	
Flow Rate		C: 0.71 GPM / H: 0.39 GPM	
Product Dim. (W x D x H)		11.8" x 14.2" x 41.8"	
Packing Dim. (W x D x H)		13.8" x 15" x 44.9"	
Net Weight		36.6 lb	
Pallet Qty.		9 PCS.	
Container Qty.		456 PCS.	

TANK SPECIFICATIONS

	COLD TANK	HOT TANK	POWER SUPPLY
Tank Volume	3.7 L	1.0 L	AC 110 V / 50/60 HZ
Capacity	2.2 LPH (≤50 °F)	7.5 LPH (≥165 °F)	
Power	85 W	450 W	
Method	Compressor	Heating Coil	



Fastest Dispense

2X Fast Dispense can fill a 28 oz. bottle in less than 15 seconds.



Adjustable Cold Temp

Control the cold water tank temperature setting until desired temperature is reached.

ADVANCED ENGINEERING

Thoughtfully engineered with innovative technology and intuitive features for a better user experience.



Choose the model that fits your application:



Bottom Load
CLBL430SC



POU 3-Stage
CLPOU430UVF3



POU 4-Stage RO
CLPOU430UVRO4



Cooler Base

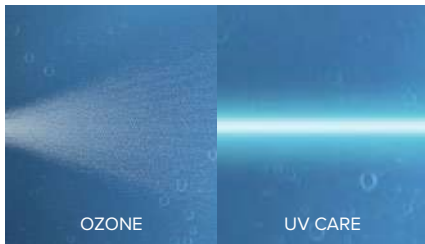
- Adds 9.3" of height to your cooler
- Sturdy design with grip feet
- Seamless design to match the cooler
- Custom fit for bottle and POU models

ACWC430
15.3" W x 16" D x 9.3" H
4.4 lb
Pallet Qty.: 42 PCS.



400 SERIES

The Brio 400 Series is available in POU stand up, top load, and bottom load models. They feature stainless-steel construction for durability, tri-temp dispensing to enjoy hot, cold and room temperature water on demand, and a child safety lock that prevents accidental burns. The Brio 400 Series is sleek, modern, and fulfills a wide range of hydration needs.



Self-Cleaning Technology

Self-cleaning ozone and UV light sanitize the water tanks and lines. (Ozone or UV cleaning depending on model.)



Cooler Base

- Adds 9.3" of height to your cooler
- Sturdy design with grip feet
- Seamless design to match the cooler

ACWC3457

16" W x 16" D x 9.3" H / 4.7 lb

Pallet Qty.: 42 PCS.



Tri-Temperature

Instant hot, cold, and room temperature water.



Child Safety Lock

Hot water safety lock keeps the family safe from accidental burns.



Large Dispense

Easily refill mugs, glasses, and sports bottles.



Stainless-Steel Tanks

Provide water purity protection and maintain water temperatures longer.



CONFORMS TO
NSF/ANSI 372



BOTTLED COOLER SPECIFICATIONS

Item No.	CLBL420V2	CLTL420V2
Model	Bottom Load	Top Load
Cleaning System	N/A	N/A
Water Temp.	● ● ●	● ● ●
Flow Rate	0.39 GPM	0.39 GPM
Product Dim.	38" x 13" x 13"	40.75" x 13.25" x 12"
Packing Dim.	41.3" x 15.2" x 14.3"	44" x 15.2" x 14.6"
Net Weight	36.9 lb	37.5 lb
Pallet Qty.	18 PCS.	18 PCS.
Container Qty.	432 PCS.	432 PCS.

POU COOLER SPECIFICATIONS

Item No.	CLPOU420UVF2	CLPOURO420SCV2
Model	POU 2-Stage	POU 4-Stage RO
Cleaning System	UV-CARE	OZONE
Water Temp.	● ● ●	● ● ●
Flow Rate	0.39 GPM	0.39 GPM
Product Dim.	40.5" x 14.2" x 12.2"	40.5" x 14.2" x 12.2"
Packing Dim.	47" x 15.2" x 14.1"	47" x 15.2" x 14.1"
Net Weight	51.49 lb	51.49 lb
Pallet Qty.	18 PCS.	18 PCS.
Container Qty.	432 PCS.	432 PCS.

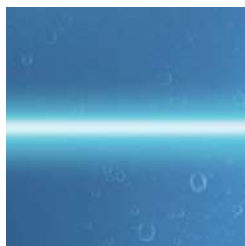
FILTER SPECIFICATIONS

Item No.	MIB200PKF	MI4PKRO
Stage 1	Sediment	Sediment
Stage 2	Carbon Block	Pre Carbon
Stage 3		RO Membrane
Stage 4		Post Carbon

See pages 106-107 for cartridge specs.

TANK SPECIFICATIONS

COLD TANK		HOT TANK		POWER SUPPLY
Tank Volume	3.6 L	Tank Volume	1 L	AC 110-120V 50HZ/60HZ
Cool Output	2 LPH	Hot Output	4 LPH	
Cooling Power	100 W	Heating Power	420 W	
Cooling Method	Compressor	Heating Method	Heating Coil	



UV Care

LED technology disinfects and sanitizes automatically.



Cooler Base

- Adds 9.3" of height to your cooler
- Sturdy design with grip feet
- Seamless design to match the cooler

ACWC3457

16" W x 16" D x 9.3" H / 4.7 lb

Pallet Qty.: 42 PCS.

300 SERIES

The Brio 300 Series is available in POU (stand up/countertop) and bottom load models. They feature a modern design, self-cleaning technology, and effortless paddle dispensing with child safety lock. The POU models are equipped with powerful 3-stage or 4-stage filtration, and the bottom load model makes bottle replacement easy. Enjoy hydration made simple and elevate any décor with the Brio 300 Series.



Easy to Clean

Made with durable and easy-to-clean materials.



Child Safety Lock

Hot water safety lock keeps the family safe from accidental burns.



Paddle Dispensing

Durable paddles make water dispensing easy.



CONFORMS TO
NSF/ANSI 372



CLBL320SCP
AVAILABLE COLORS



CLPOU320BUVF3P
AVAILABLE COLORS



CLPOU320WUVF4P
AVAILABLE COLORS



CLCTPOU320UVF3P
AVAILABLE COLORS



COOLER SPECIFICATIONS

Item No. / Color	CLBL320SCP / Stainless CLBL320BSCP / Black CLBL320WSCP / White	CLPOU320UVF3P / Stainless CLPOU320BUVF3P / Black CLPOU320WUVF3P / White	CLPOU320UVF4P / Stainless CLPOU320BUVF4P / Black CLPOU320WUVF4P / White	CLCTPOU320UVF3P / Stainless CLCTPOU320BUVF3P / Black CLCTPOU320WUVF3P / White
Model	Bottom Load	POU 3-Stage	POU 4-Stage UF	POU 3-Stage
Cleaning System	UV-CARE	UV-CARE	UV-CARE	UV-CARE
Water Temp.	● ●	● ●	● ●	● ●
Flow Rate	0.32 GPM	0.32 GPM	0.32 GPM	0.32 GPM
Product Dim.	12.2" x 14.2" x 41"	12.2" x 14.2" x 41"	12.2" x 14.2" x 41"	12.2" x 14.56" x 19"
Packing Dim.	14.1" x 17.5" x 45"	14.1" x 17.5" x 45"	14.1" x 17.5" x 45"	16.9" x 15.15" x 27.9"
Net Weight	38.5 lb	51.5 lb	51.5 lb	44 lb
Pallet Qty.	18 PCS.	18 PCS.	18 PCS.	24 PCS.
Container Qty.	432 PCS.	432 PCS.	432 PCS.	864 PCS.

FILTER SPECIFICATIONS

Item No.		MIB300PKF		MIB400PKUF
Stage 1		Sediment		Sediment
Stage 2		Pre Carbon		Pre Carbon
Stage 3		Carbon Block		UF Membrane
Stage 4				Post Carbon

See page 106 for cartridge specs.

TANK SPECIFICATIONS

COLD TANK		HOT TANK		POWER SUPPLY
Tank Volume	3.6 L	Tank Volume	1 L	AC 110-120V 50HZ/60HZ
Cool Output	2 LPH	Hot Output	4 LPH	
Cooling Power	100 W	Heating Power	420 W	
Cooling Method	Compressor	Heating Method	Heating Coil	



300 SLIM SERIES

The Brio 300 Slim Series features a sleek, space-saving design and is available in POU and top load models. Additionally, they are equipped with large paddles that dispense water effortlessly, and the hot water option is built with a child safety lock to prevent accidents. The 300 Slim Series also has stainless-steel tanks to protect water purity and maintain temperature, ensuring hot and cold purified water are always ready.



Slim Design & Tall Dispense

Ideal for smaller spaces. Tall dispense area allows for taller bottles and cups.



Germ-Free

Large push-paddles allow for germ-free dispensing.



Easy to Clean

Made with durable and easy-to-clean materials.



Child Safety Lock

Hot water safety lock keeps the family safe from accidental burns.



Paddle Dispensing

Durable paddles make water dispensing easy.



CONFORMS TO
NSF/ANSI 372



CLTL320SLP
AVAILABLE COLORS



CLPOU320BSLUVF2P
AVAILABLE COLORS



CLPOU320WSLUVF3P
AVAILABLE COLORS



COOLER SPECIFICATIONS

Item No. / Color	CLTL320SLP / Stainless Steel	CLPOU320SLUVF2P / Stainless Steel	CLPOU320SLUVF3P / Stainless Steel
	CLTL320BSLP / Black	CLPOU320BSLUVF2P / Black	CLPOU320BSLUVF3P / Black
	CLTL320WSLP / White	CLPOU320WSLUVF2P / White	CLPOU320WSLUVF3P / White
Cleaning System	N/A	UV-CARE	UV-CARE
Model	Top Load	POU 2-Stage	POU 3-Stage
Water Temp.	● ●	● ●	● ●
Flow Rate	0.32 GPM	0.32 GPM	0.32 GPM
Product Dim.	12.4" x 10.8" x 45.3"	12.4" x 10.8" x 45.3"	12.4" x 10.8" x 45.3"
Packing Dim.	15" x 16.3" x 46.7"	15" x 16.3" x 46.7"	15" x 16.3" x 46.7"
Net Weight	27.5 lb	31.53 lb	32.5 lb
Pallet Qty.	18 PCS.	18 PCS.	18 PCS.
Container Qty.	532 PCS.	532 PCS.	532 PCS.

FILTER SPECIFICATIONS

Item No.	MIB200PKF	MIB300PKF
Stage 1	Sediment	Sediment
Stage 2	Carbon Block	Pre Carbon
Stage 3		Carbon Block


See page 106 for cartridge specs.

TANK SPECIFICATIONS

COLD TANK		HOT TANK		POWER SUPPLY	
Tank Volume	3.6 L	Tank Volume	1 L	AC 110-120V 50HZ/60HZ	
Cool Output	2 LPH	Hot Output	4 LPH		
Cooling Power	100 W	Heating Power	420 W		
Cooling Method	Compressor	Heating Method	Heating Coil		

Brio
COMMERCIAL
WATER
COOLERS





Brio Water Technology builds and innovates commercial water coolers using durable materials that can withstand heavy use. They feature high-volume commercial-grade compressors, intuitive designs for a better user experience, and depending on the cooler, are equipped with many replaceable parts. Plus, these durable coolers are available in top load, POU, and countertop models to fit your hydration needs.



500 ESSENTIAL SERIES

The Brio 500 Essential Series is a top load model available in black or white and either hot/cold or room temperature/cold options. It features a cooler cabinet constructed with durable commercial-grade ABS plastic that is resistant to corrosive chemicals and physical impact. Additionally, it's equipped with stainless-steel tanks to protect water purity, quiet high-efficiency compressor, convenient removable drip tray, and non-spill top to prevent messes.



Durable Faucets

Feature durable construction to withstand daily use.



Drip Tray

Drip tray ensures a tidy dispense point.



Easy to Clean

Made with durable and easy-to-clean materials.



Child Safety Lock

Hot water safety lock keeps the family safe from accidental burns.



Commercial Compressor

High-quality internal components offer optimal performance.





COOLER SPECIFICATIONS

Item No. / Color	CL500 / White	CL520 / Black	CL505 / White	CL525 / Black
Model	Top Load	Top Load	Top Load	Top Load
Water Temp.	● ●	● ●	● ●	● ●
Flow Rate	C: 0.66 / H: 0.48 GPM	C: 0.66 / H: 0.48 GPM	C: 0.66 GPM	C: 0.66 GPM
Product Dim.	12.6" x 12.6" x 38.6"	12.6" x 12.6" x 38.6"	12.6" x 12.6" x 38.6"	12.6" x 12.6" x 38.6"
Packing Dim.	13" x 13.4" x 39.4"	13" x 13.4" x 39.4"	13" x 13.4" x 39.4"	13" x 13.4" x 39.4"
Net Weight	26.5 lb	26.5 lb	25.4 lb	25.4 lb
Pallet Qty.	24 PCS.	24 PCS.	24 PCS.	24 PCS.
Container Qty.	648 PCS.	648 PCS.	648 PCS.	648 PCS.

TANK SPECIFICATIONS

COLD TANK		HOT TANK		POWER SUPPLY
Tank Volume	4 L	Tank Volume	1.5 L	AC 110-120V 60HZ
Capacity	2 LPH	Capacity	4 LPH	
Cooling Power	85 W	Heating Power	400 W	
Cooling Method	Compressor	Heating Method	Heating Coil	



500 ESSENTIAL CURVED SERIES

The Brio 500 Essential Curved Series is a modern top load cooler with an attractive curvy design. Available in hot/cold or room temperature/cold models, they are durable, user-friendly, and easy to maintain. The hot/cold model features a child safety mechanism to prevent accidental burns, and stainless-steel tanks to protect water purity while maintaining hot and cold water temperatures.



Stainless-Steel Tanks

Stainless-steel tanks protect water purity and maintain hot and cold temperatures.



Easy Twist-on Faucets

Replace faucets in seconds with a quick turn of the wrist.



Easy to Clean

Made with durable and easy-to-clean materials.



Child Safety Lock

Hot water safety lock keeps the family safe from accidental burns.



Durable Faucets

Faucets feature durable construction to withstand daily use.



Commercial Compressor

High-quality internal components offer optimal performance.



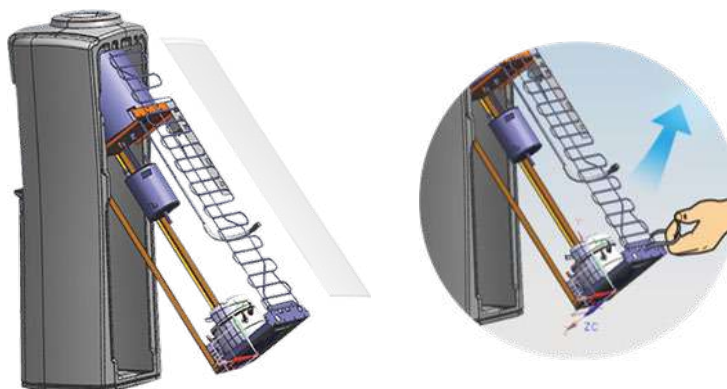


COOLER SPECIFICATIONS

Item No.	CL520CV	CL525CV	CL500CV	CL505CV
Model	Top Load	Top Load	Top Load	Top Load
Color	Black	Black	White	White
Water Temp.	● ●	● ●	● ●	● ●
Flow Rate	0.39 GPM	0.39 GPM	0.39 GPM	0.39 GPM
Product Dim.	40.4" x 12.8" x 14.4"	40.4" x 12.8" x 14.4"	40.4" x 12.8" x 14.4"	40.4" x 12.8" x 14.4"
Packing Dim.	43.1" x 15.7" x 15.1"	43.1" x 15.7" x 15.1"	43.1" x 15.7" x 15.1"	43.1" x 15.7" x 15.1"
Net Weight	33 lb	33 lb	33 lb	33 lb
Pallet Qty.	18 PCS.	18 PCS.	18 PCS.	9 PCS.
Container Qty.	432 PCS.	432 PCS.	432 PCS.	432 PCS.

TANK SPECIFICATIONS

COLD TANK		HOT TANK		POWER SUPPLY
Tank Volume	3.5 L	Tank Volume	1 L	AC 110-120V 50HZ/60HZ
Capacity	2 LPH	Capacity	4 LPH	
Cooling Power	100 W	Heating Power	420 W	
Cooling Method	Compressor	Heating Method	Heating Coil	



Detachable frame for easy internal access



CBP500 PREMIERE SERIES

Available in traditional stand up and compact countertop designs, the Brio CBP500 Premiere Series is a modern top load water cooler that is both durable and easy to maintain. Exceptionally built, it is equipped with stainless-steel tanks that protect water purity and maintain hot and cold water temperatures for longer. The CBP500 Premiere Series will effortlessly satisfy hydration needs in nearly any environment.



Non-Slip

Non-slip surface for easy bottle replacement.



Drip Tray

Drip tray ensures a tidy dispense point.



Easy to Clean

Made with durable and easy-to-clean materials.



Child Safety Lock

Hot water safety lock keeps the family safe from accidental burns.



Durable Faucets

Faucets feature durable construction to withstand daily use.



LG Compressor

High-quality LG compressor offers optimal performance.





COUNTERTOP COOLER SPECIFICATIONS

STAND UP COOLER SPECIFICATIONS

Item No.	CBPC500	CBPC520
Model	Top Load	Top Load
Color	White	Black
Water Temp.	● ● ● ●	● ● ● ●
Flow Rate	C: 0.63 GPM / H: 0.37GPM	
Product Dim.	12.4" x 14" x 18"	
Packing Dim.	12.9" x 14.5" x 19.3"	
Net Weight	28.2 lb	
Pallet Qty.	24 PCS.	
Container Qty.	576 PCS.	

Item No.	CBPC505	CBPC525
Model	Top Load	Top Load
Color	White	Black
Water Temp.	● ● ● ●	● ● ● ●
Flow Rate	C: 0.63 GPM	
Product Dim.	12.4" x 14" x 18"	
Packing Dim.	12.9" x 14.5" x 19.3"	
Net Weight	28.2 lb	
Pallet Qty.	24 PCS.	
Container Qty.	576 PCS.	

Item No.	CBP500	CBP520
Model	Top Load	Top Load
Color	White	Black
Water Temp.	● ● ● ●	● ● ● ●
Flow Rate	C: 0.63 GPM / H: 0.37GPM	
Product Dim.	12.5" x 12.5" x 38"	
Packing Dim.	12.9" x 12.9" x 39.3"	
Net Weight	34.39 lb	
Pallet Qty.	24 PCS.	
Container Qty.	504 Units/40'HQ	

Item No.	CBP505	CBP525
Model	Top Load	Top Load
Color	White	Black
Water Temp.	● ● ● ●	● ● ● ●
Flow Rate	C: 0.63 GPM	
Product Dim.	12.5" x 12.5" x 38"	
Packing Dim.	12.9" x 12.9" x 39.3"	
Net Weight	34.39 lb	
Pallet Qty.	24 PCS.	
Container Qty.	504 Units/40'HQ	

TANK SPECIFICATIONS

COLD TANK	
Tank Volume	3.4 L
Capacity	2 LPH (39–54 °F)
Cooling Power	100 W
Cooling Method	Compressor

HOT TANK	
Tank Volume	2 L (Stand Up) / 1.6 L (Counter)
Capacity	10 LPH (176–194 °F)
Heating Power	400 W
Heating Method	Heating Coil

POWER SUPPLY	
AC 110-120V 50HZ/60HZ	



CKCBP5WHT

The top load cooler can be converted to a Point-of-Use (POU) cooler by adding an adapter to the top end.



CKCBP5BLK



800 SIGNATURE SERIES

Available in POU and top load models, the Brio 800 Signature Series features an elegant round design and stainless-steel construction. With the top load models, you can choose from either hot/cold or room temperature/cold options, and the hot water is equipped with a child safety lock to prevent accidental pouring. The 800 Signature Series top load models also have a non-spill top to prevent messes, and all models are designed with a high dispense point that makes refilling nearly any size bottle effortless.



Non-Slip

Non-slip technology when loading new bottles.



Drip Tray

Drip tray ensures a tidy dispense point.



Easy to Clean

Made with durable and easy-to-clean materials.



Child Safety Lock

Hot water safety lock keeps the family safe from accidental burns.



Large Dispense

Easily refills mugs, glasses, and sports bottles.





COOLER SPECIFICATIONS

Item No.	CL805	CL800	CL800U
Model	Top Load	Top Load	POU
Water Temp.	● ●	● ●	● ●
Flow Rate	C: 0.66 GPM	C: 0.66 GPM / H: 0.48 GPM	C: 0.66 GPM / H: 0.48 GPM
Product Dim. (W x D x H)	13.4" x 13.4" x 38.2"	13.4" x 13.4" x 38.2"	13.4" x 13.4" x 38.2"
Packing Dim. (W x D x H)	13.8" x 14.2" x 39.4"	13.8" x 14.2" x 39.4"	13.8" x 14.2" x 39.4"
Net Weight	26.5 lb	27.6 lb	28.7 lb
Pallet Qty.	18 PCS.	18 PCS.	18 PCS.
Container Qty.	478 PCS.	478 PCS.	478 PCS.

TANK SPECIFICATIONS

COLD TANK		HOT TANK		POWER SUPPLY
Tank Volume	4 L	Tank Volume	1.3 L	AC 110-120V 60HZ
Capacity	2 LPH	Capacity	4 LPH	
Cooling Power	85 W	Heating Power	425 W	
Cooling Method	Compressor	Heating Method	Heating Coil	



3000 PREMIERE SERIES

Available in black, red, or white, the Brio 3000 Premiere POU Series is offered in classic stand up and compact countertop models. They feature a sophisticated filtration system that contains multiple stages that provide clean purified water, and stainless-steel tanks to maintain water temperature. The 3000 Premiere Series also has a high-quality LG compressor, large dispense point for easy refills, and a faucet that can withstand 400 lb of pressure. It is the workhorse model of the Brio line-up.



Easy to Clean

Made with durable and easy-to-clean materials.



Child Safety Lock

Hot water safety lock keeps the family safe from accidental burns.



Large Dispense

Easily refill mugs, glasses, and sports bottles.



Sleek & Compact

The 3000 Series features a curved design, high-gloss finish, and a 17" height that fits under most cabinets.





STAND UP
AVAILABLE COLORS
● ● ○

4 FILTERS (11"):



Filters NOT included. Filters are optional.
See pages 110-111 for cartridge specs.



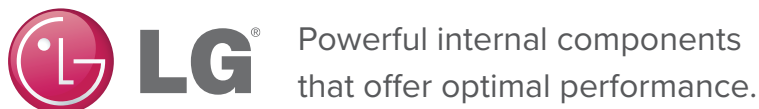
COUNTERTOP
AVAILABLE COLORS
● ● ○

Item No. / Color	CLB3000U / Black
	CLR3000U / Red
	CLW3000U / White
Model	POU
Water Temp.	● ●
Flow Rate	C: 0.53 GPM / H: 0.36 GPM
Product Dim. (W x D x H)	10.2" x 18.1" x 44"
Packing Dim. (W x D x H)	12.7" x 20.4" x 46"
Net Weight	48.5 lb
Pallet Qty.	8 PCS.
Container Qty.	316 PCS. / 40' HQ

Item No. / Color	CLBC3000U17 / BLACK
	CLRC3000U17 / RED
	CLWC3000U17 / WHITE
Model	POU
Water Temp.	● ●
Flow Rate	C: 0.53 GPM / H: 0.18 GPM
Product Dim. (W x D x H)	10.2" x 18.1" x 17"
Packing Dim. (W x D x H)	12.8" x 20.4" x 22.6"
Net Weight	37.4 lb
Pallet Qty.	32 PCS.
Container Qty.	864 PCS. / 40' HQ

TANK SPECIFICATIONS

COLD TANK		HOT TANK		POWER SUPPLY
Tank Volume	3.1 L	Tank Volume	1.3 L	AC 110-120V 50HZ/60HZ
Capacity	2 LPH (39–54 °F)	Capacity	12 LPH (176–194 °F)	
Cooling Power	100 W	Heating Power	350 W	
Cooling Method	Compressor	Heating Method	Heating Coil	





CBP8000U PREMIERE SERIES

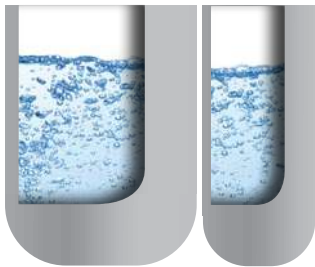
The Brio CBP8000U Premiere Series is a POU model that features the perfect combination of sleek design and powerful filtration. Designed with smart technology and large volume stainless-steel tanks, it is the ideal cooler for high-usage commercial or residential settings. Additionally, it is also user-friendly and features a premium filtration system to provide purified water, a large dispensing area to accommodate nearly any size mug, glass or bottle, and a high-capacity drip tray. The Brio CBP8000U Premiere is the premium commercial grade cooler in the Brio line-up.

Cold Tank

2 Gallon Volume

Hot Tank

4 L Volume



Large Tank Volume

Ideal for high-usage environments, commercial grade 100% stainless-steel hot and cold tanks retain water temperature longer and protect purity to provide delicious tasting water.



Easy to Clean

Made with durable and easy-to-clean materials.



Child Safety Lock

Hot water safety lock keeps the family safe from accidental burns.



LG Compressor

High-quality LG compressor offers optimal performance.





STYLISH & CONTEMPORARY WITH HIGH CAPACITY

Hot & Cold Indicator Lights

This commercial unit has been designed with easy-to-read notifications. The hot and cold indicator lights clearly inform you when water is at the ideal temperature and ready to be dispensed.

Large Dispense Area

Engineered to be simple and efficient, the large dispensing area allows for easy refills of nearly any size mug, glass, or sports bottle.



Big Volume Drip Tray

Larger than your average cooler, it is equipped with a high-capacity drip tray to prevent spills and messes. This always ensures your hydration station (and surrounding area) is safe and clean.

COOLER SPECIFICATIONS

Item No.	CBP8000U
Model	POU
Water Temp.	● ● ●
Flow Rate	C: 0.58 GPM / H: 0.36 GPM
Product Dim. (W x D x H)	13.25" x 15" x 46"
Packing Dim. (W x D x H)	14.25" x 16" x 47"
Net Weight	53 lb
Pallet Qty.	8 PCS.
Container Qty.	Hand Packed 432 PCS.



TANK SPECIFICATIONS

COLD TANK

Tank Volume	2 Gallons
Capacity	20 LPH (39–54 °F)
Cooling Power	100 W
Cooling Method	Compressor

HOT TANK

Tank Volume	4 L
Capacity	12 LPH (176–194 °F)
Heating Power	350 W
Heating Method	Heating Coil

POWER SUPPLY

AC 110-120V 50HZ/60HZ



USCOLD100

USCOLD120



USHOT100

USHOT120

BRIO UNDERSINK WATER COOLERS & HEATERS

These undersink water coolers and heaters are luxury, high-quality products that surpass our consumers' expectations. Essential to have in homes, the units' slender design allows them to slide compactly under kitchen counters of varying sizes. They have a high-performance rating, are energy efficient and are built to last for years on end. The units are equipped with an easy-to-install water filter connector that is compatible with different types of filters and brands. Cherished for being a reliable kitchen appliance, these coolers and heaters are available in a sleek black or white finish. They are timeless products that are compatible with all types of décors and kitchen appliances.

STANDARD FEATURES

- Instant cold and hot water
- Lead-free brass parts
- Indoor usage
- Water filter connector compatible

SPECIFICATIONS

Item No. / Color	USCOLD100 / White	USHOT100 / White
	USCOLD120 / Black	USHOT120 / Black
Dim. (W x D x H)	7" x 12.5" x 14.5"	7" x 9.5" x 15.2"
Weight	26.45 lb	12.12 lb
Power Supply	110V, 60Hz; 220/240V, 50Hz	110V, 60Hz; 220/240V, 50Hz
Tank Volume	1.2 L	4 L
Watt	160 W	150 W
Capacity	20 LPH (39–54 °F)	12 LPH (176–194 °F)



BRIO UNDERSINK STAINLESS STEEL WATER COOLERS

Designed for commercial use, the Brio USCOLD800 and USCOLDWF are dependable undersink cold water coolers that separate themselves from competing water coolers in the market. Each water cooler features industry-leading technology and has a lifespan that exceeds those of similar products. Although it is compact in size for our consumers' convenience, it features a larger tank volume, which comes in handy in busy settings. It pairs well with products such as drinking fountains and features an easy-to-install water filter connector that is compatible with different types of filters and brands. A durable commercial appliance, this cooler has a stainless-steel finish that allows it to fit into different environments.

STANDARD FEATURES

- Instant cold water
- Splash-resistant surface
- Durable satin stainless steel finish
- Lead-free brass parts
- Indoor usage
- Water filter connector compatible

SPECIFICATIONS

Item No.	USCOLD800	USCOLDWF
Dim. (W x D x H)	7" x 17.3" x 15.7"	12.2" x 19.2" x 16.9"
Weight	30 lb	39.6 lb
Power Supply	110V, 60Hz; 220/240V, 50Hz	110V, 60Hz; 220/240V, 50Hz
Tank Volume	2.2 L	2.2 L
Watt	170 W	200 W
Capacity	20 LPH (39–54 °F)	20 LPH (39–54 °F)



USCOLD800



USCOLDWF



Brio

COMMERCIAL
ICE MACHINES/
DISPENSERS

Brio Commercial Ice Machines & Dispensers combine user-friendly functionality, contemporary design, and powerful ice production. They are ideal for commercial kitchens, restaurants, cafés, and nearly any hospitality environment. Discover the pinnacle in high-capacity ice production with Brio.





BRIO ICE MACHINE WITH BIN

Brio's Ice Machines with Bins are powerful, efficient, and have contemporary designs. They feature durable stainless steel construction, create full cubes, and have built-in storage. Plus, they are equipped with adjustable legs to fit your space, commercial compressors, and digital display panels that allow you to customize the desired thickness of the ice. Available in models that produce 80 lb., 120 lb., 210 lb., or 280 lb. of ice per day.



Display Panel

Displays operation status and error messages. Also, easily access clean mode feature from display.



Control Ice Thickness

Choose and set your preferred ice thickness.



Clean Mode

Effortlessly set to "clean" for easy sanitizing and maintenance.



Premium-Grade Stainless Steel & Parts

High-quality steel and foam allow for cooler bin temperature.



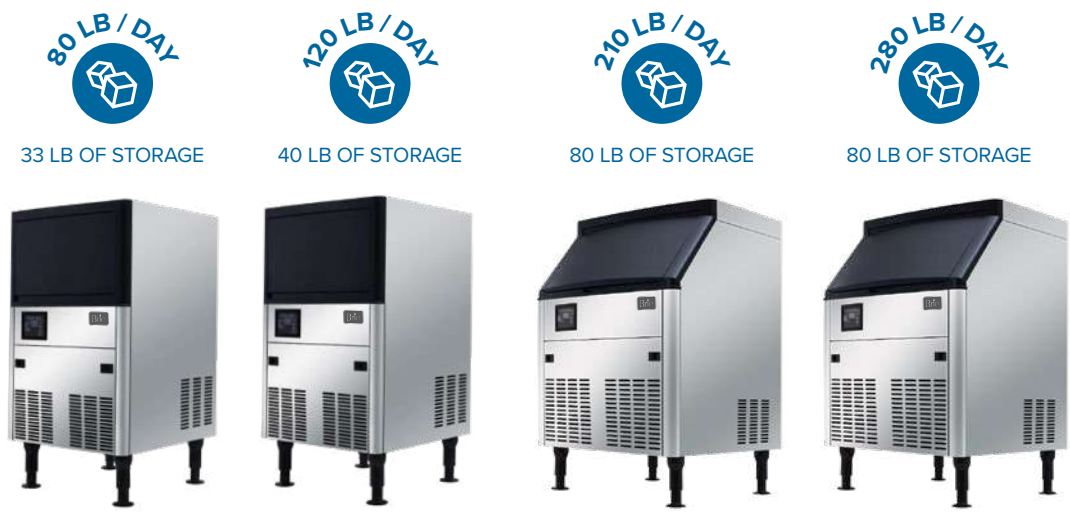
Commercial Compressor

High-quality internal components offer optimal performance.



Fits Under Counter w/ Adjustable Legs

Compact design and adjustable leg heights to fit your space.



SPECIFICATIONS	80 ICE MACHINE W/ BIN	120 ICE MACHINE W/ BIN	210 ICE MACHINE W/ BIN	280 ICE MACHINE W/ BIN
Item No.	ICMB80FC	ICMB120FC	ICMB210FC	ICMB280FC
Dimensions (L x W x H)	19.69" x 17.72" x 33.46"	19.69" x 23.23" x 35.43"	25.98" x 26.97" x 38.19"	25.98" x 26.97" x 38.19"
Ice Output	80 lb per day	120 lb per day	210 lb per day	280 lb per day
Ice Shape	Full Cube	Full Cube	Full Cube	Full Cube
Bin Capacity	33 lb	40 lb	80 lb	80 lb
Compressor	Cubigel	Secop	Cubigel	Secop
Voltage (V/Hz)	115/60	115/60	115/60	110/60
Power	350 W	446 W	526 W	726 W
Condenser Unit	Air	Air	Air	Air
Refrigerant	R290	R290	R290	R290
Net Weight	79.37 lb	99.21 lb	127.87 lb	132.28 lb
Gross Weight	88.18 lb	110.23 lb	145.51 lb	147.71 lb
Carton Dimensions (L x W x H)	22.83" x 20.87" x 32.87"	22.83" x 26.38" x 32.87"	30.71" x 29.33" x 35.43"	30.71" x 29.33" x 35.43"
Loading Qty (20GP/40HQ)	88 / 264 pcs	64 / 144 pcs	42 / 96 pcs	42 / 96 pcs

PRODUCES FULL CUBES: 22 X 22 X 22 MM





BRIO MODULAR ICE MACHINE

Available in models that can create 350 lb. or 500 lb. of ice per day, Brio Modular Ice Machines are ideal for restaurants, bars, and cafés. They have premium stainless steel construction with a display panel that enables you to customize the thickness of the ice. Plus, they're also built with angled openings for effortless access, and adjustable legs to fit your space.



Display Panel

Displays operation status and error messages. Also, easily access clean mode feature from display.



Control Ice Thickness

Control the thickness of ice for levels of usage options.



Clean Mode

Effortlessly set to "clean" for easy sanitizing and maintenance.



Premium-Grade Stainless Steel & Parts

High-quality steel and foam allow for cooler bin temperature.



High-Capacity Production

Available models produce 350 lb. or 500 lb. of ice per day.



Modular Design

Convenient modular design make bin storage options possible.



275 LB OF STORAGE



375 LB OF STORAGE

775 LB OF STORAGE



PRODUCES FULL CUBES:
22 X 22 X 22 MM



SPECIFICATIONS

	350 MODULAR ICE MACHINE	500 MODULAR ICE MACHINE	LARGE ICE BIN
Item No.	ICM350RC - ICE MAKER ICB275 - ICE BIN	ICM500RC - ICE MAKER ICB375 - ICE BIN	ICB775 - ICE BIN <small>(Bin top/cover needed with ice maker)</small>
Overall Dimensions (L x W x H)	22.05" x 32.68" x 67.64"	29.92" x 32.68" x 67.64"	—
Ice Maker (L x W x H)	22.05" x 24.33" x 22.36"	29.92" x 24.33" x 22.36"	—
Ice Bin (L x W x H)	22.05" x 32.68" x 45.28"	29.92" x 32.68" x 45.28"	48.3" x 38.3" x 49"
Ice Output	350 lb per day	500 lb per day	—
Ice Bin Storage	275 lb	375 lb	775 lb
Ice Shape	Full Cube	Full Cube	—
Compressor	Secop	Secop	—
Voltage (V/Hz)	115/60	115/60	—
Power	790 W	1113 W	—
Condenser Unit	Air	Air	—
Refrigerant	R290	R290	—
Ice Maker Net Weight	110.23 lb	143.3 lb	—
Ice Bin Net Weight	77.16 lb	99.21 lb	167.55 lb
Ice Maker Gross Weight	119.05 lb	154.32 lb	—
Ice Bin Gross Weight	88.18 lb	110.23 lb	218.26 lb
Ice Maker Packing Dimensions	25.79" x 29.53" x 24.41"	33.27" x 29.53" x 24.41"	—
Ice Bin Packing Dimensions	25.39" x 35.04" x 41.54"	33.46" x 35.04" x 41.54"	40.8" x 51.4" x 50.8"
Loading Qty (20GP/40HQ)	26 / 52 pcs	21 / 42 pcs	—





Display Panel

Displays operation status and error messages. Also, easily access clean mode feature from display.



Control Ice Thickness

Choose and set your preferred ice thickness.

BRIO MODULAR ICE DISPENSER

Available in models that can create 350 lb. or 420 lb. of ice per day, Brio Modular Ice Dispensers are ideal for hotels, motels, and resorts. They have premium stainless steel construction with a display panel that enables you to customize the thickness of the ice. Plus, they're also built with an on-demand chute mechanism and an oversized drain pan to collect overflow, making them the perfect ice machine for any hospitality setting.



Clean Mode

Effortlessly set to "clean" for easy sanitizing and maintenance.



Premium-Grade Stainless Steel & Parts

High-quality steel and foam allow for cooler bin temperature.



High-Capacity Production

Available models produce 350 lb. or 420 lb. of ice per day.



Dispense-On-Demand

Easily dispense ice with a simple push of the chute.



130 LB OF STORAGE



130 LB OF STORAGE



PRODUCES FULL CUBES:
22 X 22 X 22 MM



SPECIFICATIONS

350 MODULAR ICE DISPENSER

420 MODULAR ICE DISPENSER

Item No.	ICM350RC - ICE MAKER	ICM420RC - ICE MAKER
	ICDB130 - ICE BIN	ICDB130 - ICE BIN
Overall Dimensions (L x W x H)	22.05" x 33.66" x 75.71"	22.05" x 33.66" x 75.71"
Ice Maker (L x W x H)	22.05" x 24.33" x 22.36"	22.05" x 24.33" x 22.36"
Ice Output	350 lb per day	420 lb per day
Ice Shape	Full Cube	Full Cube
Voltage (V/Hz)	115/60	115/60
Power	1000 W	1100 W
Condenser Unit	Air	Air
Refrigerant	R404A	R404A
Ice Maker Net Weight	110.23 lb	114.64 lb
Ice Maker Gross Weight	119.05 lb	123.46 lb
Ice Maker Packing Dimensions	25.79" x 29.53" x 24.41"	25.79" x 29.53" x 24.41"
Ice Maker Loading Qty (20GP/40HQ)	24 / 56 pcs	24 / 56 pcs
Ice Bin (L x W x H)	22.05" x 33.66" x 53.35"	22.05" x 33.66" x 53.35"
Ice Bin Storage	130 lb	130 lb
Ice Bin Power	210 W	210 W
Ice Bin Net Weight	169.76 lb	169.76 lb
Ice Bin Gross Weight	182.98 lb	182.98 lb
Ice Bin Packing Dimensions	25.39" x 36.14" x 49.21"	25.39" x 36.14" x 49.21"
Ice Bin Loading Qty (20GP/40HQ)	30 / 80 pcs	30 / 80 pcs



Brio

RESIDENTIAL
FILTRATION
SYSTEMS



Brio Residential Filtration Systems combine a user-friendly functionality with powerful filtration. Perfect for any kitchen—large or small—the systems are also offered with advanced features like AquaGreen technology, composite multi-stage filters, smart faucets, and space-saving tankless designs.



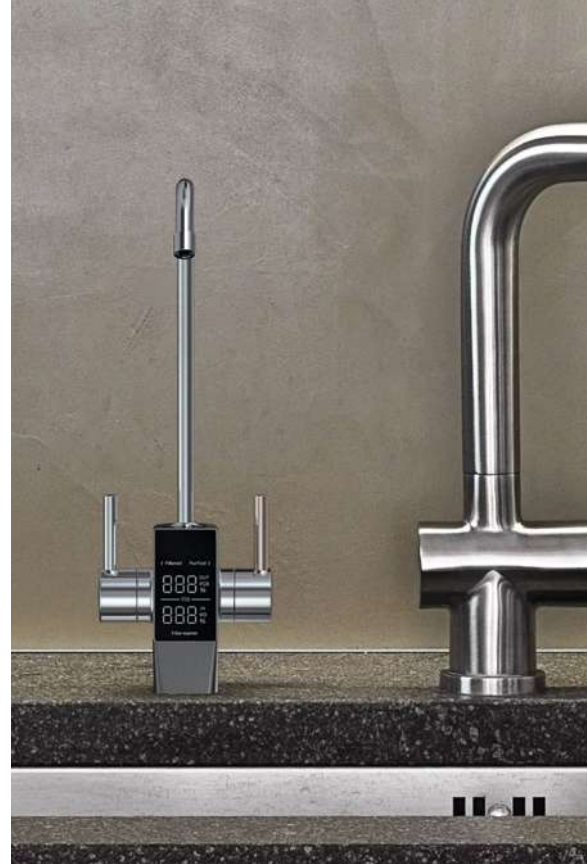
AQUUS®



1.5:1 RO SYSTEM
TROE600COL



2:1 RO SYSTEM
TROE800COL
TROE100COL
TROE1200COL



Two Filtration Options



- 1** Filtered Water
Perfect for washing produce and cooking.
- 2** RO-Purified Water
For the best purified drinking water.

AQUUS TANKLESS RO FILTRATION SYSTEM WITH SMART FAUCET

The Brio AQUUS Tankless RO Filtration System reliably produces a plentiful supply of purified water on demand. This advanced system with smart faucet features convenient, easy-to-read digital displays that keep track of total dissolved solids in your water and monitor filter life. It is equipped with powerful 4-in-2 filtration in two easy-to-install cartridges. The Brio AQUUS Tankless RO Filtration System is available in four models that either feature 1.5:1 or 2:1 pure water to wastewater ratios.

SPECIFICATIONS

Item No.	TROE600COL	TROE800COL	TROE1000COL	TROE1200COL
Stage	4	4	4	4
Flow Rate	0.39 GPM	0.53 GPM	0.66 GPM	0.79 GPM
Daily Production Rate	600 GPD	800 GPD	1000 GPD	1200 GPD
Inlet Pressure, PSI	14–87	14–87	14–87	14–87
Dimensions (W x D x H)	5.2" x 18.2" x 16.6"	5.2" x 18.2" x 16.6"	5.2" x 18.2" x 16.6"	5.2" x 18.2" x 16.6"
Net Weight	27 lb	27 lb	28.2 lb	29.5 lb
Pallet Qty.	24 PCS.	24 PCS.	24 PCS.	24 PCS.

See page 109 for filter cartridge specs.

BRIO TANKLESS RO FILTRATION SYSTEM



PRISM®



1.5:1 RO SYSTEM
TROE600PRISM

PRISM TANKLESS RO FILTRATION SYSTEM W/ STAINLESS STEEL FAUCET

The Brio PRISM RO Filtration System with Stainless Steel Faucet features a sleek, durable design and 4-in-2 filtration to reliably deliver pure water on demand. It features an elegant stainless steel swan-neck faucet with easy single-lever dispensing and four powerful stages of filtration—sediment, carbon fiber, carbon block, and reverse osmosis—housed in two easy-to-install cartridges. It provides up to 600 gallons per day of reliably fresh water, and offers a 1.5:1 pure water to wastewater ratio.

SPECIFICATIONS

Item No.	TROE600PRISM
Stage	4
Flow Rate	0.39 GPM
Daily Production Rate	600 GPD
Inlet Pressure, PSI	15–100
Dimensions (W x D x H)	5.4" x 16.9" x 15.4"
Net Weight	23 lb
Pallet Qty.	24 PCS.

See page 109 for filter cartridge specs.



PCB Multi-Stage



CERTIFIED TO
NSF/ANSI 42

Reverse Osmosis



CERTIFIED TO
NSF/ANSI 58

4-in-2 Premium Filtration



Premium Quality
Sediment Filter



Premium Quality
Carbon Fiber Filter



Premium Quality
Carbon Block Filter



Premium Quality
Reverse Osmosis
Filter



G20-U / ROSL700
AVAILABLE COLORS



G20-U / ROSL700WHT
AVAILABLE COLORS



G10-U / ROSL500
AVAILABLE COLORS



4-in-2 Filtration

Premium and powerful filtration system designed to fit 4 stages into 2 cartridges.

2:1 Pure-to-Waste Ratio

Cutting edge filtration delivers a faster flow rate and reduces water waste; 2 gallons of purified water for 1 gallon of contaminated water.



Tankless Design

G20-U / G10-U TANKLESS RO FILTRATION W/ SMART FAUCET

The Brio G20-U and G10-U provide filtration without frustration. These undersink reverse osmosis systems feature a compact tankless design and Smart Faucet Technology that tracks the filter lifespan, making replacement easy. At 700 GPD or 500 GPD, both models are equipped with powerful 4-in-2 filtration that eliminates potentially harmful contaminants. You'll experience the difference in every sip.

SPECIFICATIONS

Item No. / Color	ROSL700 / Gold	ROSL500 / Black
	ROSL700BLK / Black	ROSL500WHT / White
	ROSL700WHT / White	
Stage	4	4
Flow Rate	0.46 GPM	0.33 GPM
Daily Capacity	700 GPD	500 GPD
Inlet Pressure PSI	14.5–58	14.5–58
Connections	1/4"	1/4"
Dimensions (W x D x H)	5.2" x 18.2" x 16.5"	5.2" x 18.2" x 16.5"
Net Weight	31 lb	31 lb
Pallet Qty.	24 PCS.	24 PCS.

See page 109 for filter cartridge specs.



4-in-2 Premium Filtration

4-in-2 powerful filtration designed to fit into two cartridges easily slide into the G20 & G10 systems. Recharge with water that is free of many harmful water pollutants commonly found in tap water sources.

RO Membrane Filter

 Premium Quality Reverse Osmosis Filter

PCB Mult-Stage Filter

 Premium Quality Sediment Filter

 Premium Quality Carbon Fiber Filter

 Premium Quality Carbon Block Filter



Lifetime Capacity: 7,200 L
Filter Life: 12–24 Months

Lifetime Capacity: 3,600 L
Filter Life: 6–12 Months

Smart Faucet Technology

Filtered
Perfect for cleaning produce and cooking.

Purified
Enjoy the purest drinking water there is.



Dual Flow Faucet

Both filtered and RO-purified water stream from the same elegant spout on our Dual Flow Faucet, making hydration simple and sleek.



Filter Life Indicator

Smart Technology tracks the filter lifespan so you don't have to. Clear and bright display provides you with realtime filter assessment.



TDS Meter

Experience ultimate purity in every pour. Observe accurate contaminate readings when dispensing (RO water only) with the Total Dissolved Solids Meter feature.





pH: >8.5
Calcium: 5–15 mg/L
Magnesium: 5–15 mg/L
1:1 Pure Water to Wastewater
 (50% Permeate Recovery)



Each system comes with everything included for easy install including filters.



BRIO PURE REVERSE OSMOSIS 6-STAGE FILTRATION SYSTEMS WITH REMINERALIZATION

Brio PURE RO Filtration Systems produce water that's safe for the whole family. These compact systems add back calcium, magnesium, and other minerals beneficial to health. They're also easy to install and produce less water waste with their efficient 50% recovery rate.

EACH SYSTEM INCLUDES:

- Filtration housing unit
- Five filter cartridges + RO membrane (filters may vary per model)
- Stainless steel faucet with ball valve
- Polymer pressure tank & valve
- Feedwater adapter, feed valve & drain saddle
- Pack of color tubes (4 pcs.) for easy installation
- Service wrenches & user manual

SPECIFICATIONS:

Item No.	URO6PURALK	URO6PURBAL	URO6PURCAL
Daily Capacity	75 GPD	75 GPD	75 GPD
Inlet Pressure, bar (PSI)	3–6 (43.5–87)	3–6 (43.5–87)	3–6 (43.5–87)
Inlet Connections	1/2" / 3/8"	1/2" / 3/8"	1/2" / 3/8"
Tank Volume	3.2 gal	3.2 gal	3.2 gal
Type	Alkaline Water	Calcium & Magnesium	Calcium
Unit Weight / Box Weight	22 lb / 22.25 lb	22 lb / 22.25 lb	22 lb / 22.25 lb
Unit Dimensions (W x D x H)	16.9" x 7.7" x 12.3"	16.9" x 7.7" x 12.3"	16.9" x 7.7" x 12.3"
Box Dimensions (W x D x H)	18.9" x 13.6" x 19.5"	18.9" x 13.6" x 19.5"	18.9" x 13.6" x 19.5"

BRIO PURE ALKAFUSE RO SYSTEM (6-STAGE)

KEY FEATURES:

- Produces alkaine water with calcium and magnesium
- Features less water waste with an efficient 50% recovery
- Reverse osmosis produces water that's safe for the whole family
- Clean room manufactured to protect filter and ensure safe installation



RF5PKPURALK

PURE ALKAFUSE 5-PACK REPLACEMENT FILTERS

PP5 / GAC / CTOAG Filters
Mineralizing Filter
Alkafuse Filter

BRIO RO MEMBRANE

75 GDP (sold separately)



RFROM181275



URO6PURALK

Quality of mineralized water

pH	>8.5
Total mineral content	60–120 mg/L
Calcium	5–15 mg/L
Magnesium	5–15 mg/L
Sodium + potassium	<5 mg/L
Hydrocarbonates	30–60 mg/L
Chlodires	<5 mg/L

BRIO PURE BALANCE RO SYSTEM (6-STAGE)

KEY FEATURES:

- Adds back calcium and magnesium, minerals beneficial to health
- Features less water waste with an efficient 50% recovery
- Maintains an optimal level of minerals in water
- Reverse osmosis produces water that's safe for the whole family
- Clean room manufactured to protect filter and ensure safe installation



RF5PKPURBAL

PURE BALANCE 5-PACK REPLACEMENT FILTERS

PP5 / GAC / CTOAG Filters
Coconut Post Carbon Filter
Calcium & Magnesium Filter

BRIO RO MEMBRANE

75 GDP (sold separately)



RFROM181275



URO6PURBAL

Quality of mineralized water

pH	7–8.5
Total mineral content	60–80 mg/L
Calcium	10–15 mg/L
Magnesium	4–6 mg/L
Sodium + potassium	<5 mg/L
Hydrocarbonates	30–60 mg/L
Chlodires	<5 mg/L

BRIO PURE AQUACALCIUM RO SYSTEM (6-STAGE)

KEY FEATURES:

- AquaCalcium mineralizer enriches filtered water with calcium
- Recreates the delicious natural taste of mountain spring water
- Ensures consistent mineral levels in purified water
- Water with calcium recommended for teenagers and elderly
- Manufacturer assurance that this product has been tested and approved



RF5PKPURCAL

PURE AQUACALCIUM 5-PACK REPLACEMENT FILTERS

PP5 / GAC / CTOAG Filters
Coconut Post Carbon Filter
Calcium Remineralizing Filter

BRIO RO MEMBRANE

75 GDP (sold separately)



RFROM181275



URO6PURCAL

Quality of mineralized water

pH	7–7.5
Total mineral content	55–65 mg/L
Calcium	10–15 mg/L
Magnesium	<1 mg/L
Sodium + potassium	<5 mg/L
Hydrocarbonates	30–50 mg/L
Chlodires	<5 mg/L



NFLUSFQ100

NFLUSFQ200

NFLUSFQ300

1, 2- & 3-STAGE UNDERSINK SYSTEMS

SPECIFICATIONS:

Item No.	NFLUSFQ100	NFLUSFQ200	NFLUSFQ300
Weight	4.5 lb	7 lb	11 lb
Dim.	7" x 7" x 14"	5.5" x 12" x 14"	16" x 14" x 6"
Pallet Qty.	24 PCS.	24 PCS.	24 PCS.



LROQ500

LROQ500 5-PACK
REPLACEMENT FILTER KIT
RFK1903

QUICK CONNECT
FILTERS

KEY FEATURES:

- Powerful 5-stages of filtration mounted on a metal bracket
- Reverse osmosis technology to thoroughly remove contaminants
- Color coded quick connect fittings
- 4-Gallon tank & stainless steel faucet

FILTRATION TECHNOLOGY:

- Stage 1: 5 Micron PP Sediment Filter
- Stage 2: GAC Coconut Shell Carbon Filter
- Stage 3: 10 Micron Carbon Block Filter
- Stage 4: 50 GPD RO Membrane
- Stage 5: Post Carbon Filter



ERO500



ERO500 5-PACK
REPLACEMENT FILTER KIT
RFK1910



SROM500 5-PACK REPLACEMENT
FILTER KIT
RFK1927



ALL MODELS
ARE ALKAFUSE
UPGRADABLE



SROM500

SPECIFICATIONS:

Item No.	LROQ500	ERO500	SROM500
Net Weight	15 lb	19 lb	18 lb
Inlet Pressure,	3-6	3-6	3-6
bar (PSI)	(43.5-87)	(43.5-87)	(43.5-87)
Connections	1/4"	1/4"	1/4"
Dimensions (HxWxD)	14" x 16" x 17"	18" x 17" x 16"	18" x 17" x 16"
Pallet Qty.	24 PCS.	24 PCS.	24 PCS.

UNDERSINK RO W/ DEIONIZATION

The Brio Undersink RO System with Deionization is a compact unit that features powerful filtration. Built to be user friendly and easily connect to a local water source without complicated tubing, this system combines reverse osmosis filtration with deionization to remove difficult impurities and lower TDS. It is perfect for those looking for a simple and cost-effective filtration solution that provides endless premium water.

REVERSE OSMOSIS 5-STAGE FILTRATION

- SD Stage 1: Sediment**
Filters dust, particles, and rust.
- GC Stage 2: Granular Activated Carbon**
Filters chlorine, bad odors & tastes, cloudiness, and VOCs.
- AC Stage 3: Activated Carbon Block**
Additionally filters chlorine, bad odors & tastes, cloudiness, and VOCs.
- RO Stage 4: Reverse Osmosis Membrane**
Blocks contaminants like arsenic, lead, copper, and nitrates.
- DI Stage 5: Deionization**
Removes additional impurities and lowers the TDS.



LROQ500-DI



ERO500-DI

SROP7000 COMMERCIAL FILTRATION SYSTEM

SROP7000 Commercial Filtration System is ideal for any setting, from home to busy restaurant. The high-volume of filtered water produced ensures that no glass is ever empty, ensuring optimal hydration. Created to provide powerful filtration through a reverse osmosis system and built to take up minimal space. The user-friendly unit allows for easy installation and quickly produces filtered water.

SPECIFICATIONS:

Item No.	SROP7000
Stage	7
GPD Options	300 GPD / 400 GPD / 500 GPD
Diaphr. Pump	.317 GPD
Tank (Optional)	All Sizes
Weight	18 lb
Dimensions (W x D x H)	18.9" x 10" x 30.3"

*Depends on membrane type, feedwater TDS, temperature, and permeate recovery.

Note: Production and quality of reverse osmosis-purified water produced is dependent upon inlet water quality, water temperature, quality of water pre-treatment, consumption rate, operating conditions, and the manufacturer's membrane specifications. Regular servicing by a professional and timely filter replacements are highly recommended for optimal performance.



REPLACEMENT FILTER KITS:

- RFK1880 - SROP7000 4-PACK REPLACEMENT FILTER KIT
- RFK1897 - SROP7000 7-PACK REPLACEMENT FILTER KIT

amphora



AMPHORA RO FILTRATION WITH ARTESIAN CARAFE

The Amphora Reverse Osmosis Filtration System with 2.5L Artesian Carafe is equipped with Autofill Technology that ensures your pitcher is never empty. The compact tankless 5-in-1 multi-stage filter reduces rust, dirt, dust, chlorine, lead, and VOCs. Enjoy unlimited purified water and effortlessly clean produce, prepare meals, water plants, and replenish glasses with ease.

SPECIFICATIONS

Item No.	ROP100
5-Stage	1-Sediment, 2-GAC, 3-Sediment, 4-RO, 5-Carbon
Flow Rate	0.26 GPM
Daily Production Rate	100 GPD
Inlet Pressure, Bar (PSI)	1-4 (14.5-58)
Total Volume of Pitcher	2.5 L
Dimensions (W x D x H)	5.35" x 9.84" x 13.93"
Net Weight	18 lb
Pallet Qty.	24 PCS.

See page 108 for filter cartridge specs.



AMPHORA TANKLESS UF WITH STAINLESS STEEL FAUCET

Transform your tap water with the Amphora Tankless Ultrafiltration System. Available in black or white, this cost-effective filtration system reduces contaminants from your tap water with one easy-to-load filter. The stainless steel faucet adds a sleek and modern touch to any countertop while providing an elevated hydration experience.

SPECIFICATIONS

Item No. / Color	UF100FBLK / Black
	UF100FWHT / White
3-Stage	1-Sediment, 2-Carbon, 3-UF
Flow Rate	0.26 GPM
Daily Production Rate	100 GPD
Dimensions (W x D x H)	5.35" x 9.84" x 13.93"
Net Weight	18 lb
Pallet Qty.	24 PCS.

See page 108 for filter cartridge specs.



AMPHORA FILTRATION SYSTEM

BRIO 2- & 3-STAGE UNDERSINK FILTRATION SYSTEMS

Elevate your kitchen with the Brio 2- and 3-Stage Undersink Filtration Systems. This compact filtration solution reliably produces a plentiful supply of fresh water on demand. It removes contaminants, produces zero wastewater, and preserves essential minerals in your drinking water.



Undersink Convenience

Space-saving design fits under most sinks easily.

Specifications

Item No.	FUS200R	FUS300R
Stage	2	3
Flow Rate	0.5 GPM	0.5 GPM
Inlet Pressure, Bar (PSI)	0.2–0.69 MPA (30–100)	0.2–0.69 MPA (30–100)
Dimensions (W x D x H)	7.87" x 3.74" x 12.12"	11.61" x 3.74" x 12.12"
Net Weight	3.86 lb	4.41 lb
Master Carton Qty. / Pallet Qty.	4 PCS. / 120 PCS.	4 PCS. / 120 PCS.

See page 108 for filter cartridge specs.



CERTIFIED TO NSF/ANSI 42, 53



CERTIFIED TO NSF/ANSI 42, 53



Sediment Filtration

A sediment filter removes large impurities commonly found in tap water.



Carbon Block Filtration

A carbon block filter certified to NSF/ANSI Standards 42 and 53, for removal of chlorine and lead.



Post Carbon Filtration

A granular activated carbon filter helps enhance the taste of the water cleaned.



BRIO INSTANT HOT WATER DISPENSER SYSTEM

The Brio Instant Hot Water Dispenser System pairs innovative technology with advanced 3-stage filtration. Plus, it also features a dual-flow faucet, temperature control, and dry-burn protection. Enjoy comforting meals, instant hot beverages, quick cleanups, effortless lid removal, and more – without the hassle. Available in digital and manual switch models.

Faster Cooking Time

Jump start your cooking by getting near boiling hot water instantly.

KEY FEATURES:

- Produces up to 55 cups of hot water per hour
- 14 hot water temperature settings*
- Secure two-step dispense with auto relock
- Powerful 3-stage filtration
- Temperature display and empty tank indicator

*Digital system only.

SYSTEM INCLUDES:

3-Stage Filtration / 2.4 L Water Heater / Dual-Flow Faucet



Undersink Convenience

Space-saving design fits under most sinks easily.



3-STAGE FILTRATION

The compact filtration reliably produces a plentiful supply of fresh water, removing contaminants.



Stage 1: Filters dust, particles, and rust.

Stage 2: Filters chlorine, bad odors and tastes.

Stage 3: Removes additional impurities and improves taste.



SPECIFICATIONS:

Flow Rate	0.5 GPM
Inlet Pressure, Bar (PSI)	0.2-0.69 MPA (30-100)
Dimensions (W x D x H)	11.61" x 3.74" x 12.12"
Weight	4.41 lb

WATER HEATER

With a capacity of 2.4 L, the instant hot water heater is user-friendly and equipped with smart alerts.



Digital



Manual Switch

SPECIFICATIONS:

Hot Water Flow Rate	0.4 GPM at >194 °F (90 °C)
Ambient Water Flow Rate	1.5 GPM
Dimensions (W x D x H)	7.48" x 7.48" x 10.44"
Weight	9.04 lb



Brushed Nickel

FAUCET:

6.13" W x 5.48" D x 10.13" H
3.08 lb

PREMIUM DUAL-FLOW FAUCETS

Elegant faucet delivers your choice of room temperature or near boiling hot water. Available in six premium finishes.

- 1 **Instant Hot Water:** Secure two-step dispensing with auto relock.
- 2 **Built to Last:** In durable solid brass with interior stainless steel spout.
- 3 **Endless Fresh Water:** Delicious ambient water dispenses at 1.5 GPM.



Brushed Gold



Matte Black



Chrome Plated



Oil-Rubbed Bronze



Rose Gold

EACH SYSTEM INCLUDES: 3-STAGE FILTRATION / 2.4 L WATER HEATER / DUAL-FLOW FAUCET

DIGITAL SYSTEM:

CLIID300BN	CLIID300BG	CLIID300BLK	CLIID300CP	CLIID300RB	CLIID300RG
Brushed Nickel	Brushed Gold	Matte Black	Chrome Plated	Oil-Rubbed Bronze	Rose Gold
18.3" x 16.2" x 14.8"	18.3" x 16.2" x 14.8"	18.3" x 16.2" x 14.8"	18.3" x 16.2" x 14.8"	18.3" x 16.2" x 14.8"	18.3" x 16.2" x 14.8"
18.5 lb	18.5 lb	18.5 lb	18.5 lb	18.5 lb	18.5 lb
Pallet Qty.: 24 PCS.	Pallet Qty.: 24 PCS.	Pallet Qty.: 24 PCS.	Pallet Qty.: 24 PCS.	Pallet Qty.: 24 PCS.	Pallet Qty.: 24 PCS.

MANUAL SWITCH SYSTEM:

CLIH300BN	CLIH300BG	CLIH300BLK	CLIH300CP	CLIH300RB	CLIH300RG
-----------	-----------	------------	-----------	-----------	-----------



SINGLE HOUSING MULTI-STAGE FILTRATION SYSTEMS

The Brio Single Housing Multi-Stage Filtration System is cost effective and easy to use. Available in 4 different filter capacities, each system is equipped with advanced 3-in-1 filtration that's a cinch to install and maintain. Built with premium materials, the system hooks to a cold water line, can work with your existing faucet, and is perfect for homes, rentals, garages, RVs, and more.

KEY FEATURES:

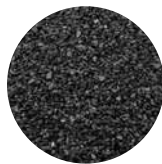
- Advanced 3-stage single housing filtration system
- Straightforward solution that's easy to install & maintain
- Twist-and-lock design for quick filter replacement
- Multi-use filtration, ideal for undersink and refrigerator
- Available in 4 sizes, with or without stainless steel faucet

3-in-1 Filtration System



Stage 1: Melt-Blown Polypropylene

Blocks large sediment particles like dust, dirt, and rust.



Stage 2: Activated Carbon

Removes chlorine, tastes, cloudiness, odors, colors, and VOCs.



Stage 3: Kinetic Degradation Fluxion

Removes heavy metals like lead, mercury, chromium, and more.

Quick Change

Twist-and-lock design allows you to easily replace filters without any tools.





Multi-Space Use

Long-lasting filtration system can be used for homes, garages, work environments, recreational vehicles, and more.



CERTIFIED TO NSF/ANSI 42, 372



11" SYSTEM W/ FAUCET

16" SYSTEM W/ FAUCET

22" SYSTEM W/ FAUCET

26" SYSTEM W/ FAUCET

SPECIFICATIONS:

Item No.	FUS100F11	FUS100F16	FUS100F22	FUS100F26
Filter Capacity*	12,000 Gallons	18,000 Gallons	25,200 Gallons	30,000 Gallons
Flow Rate*	0.66 GPM	0.66 GPM	0.66 GPM	0.66 GPM
Connections	3/8" / 1/2"	3/8" / 1/2"	3/8" / 1/2"	3/8" / 1/2"
Faucet Height	11"	11"	11"	11"
Dimensions (W x D x H)	3.5" x 4.5" x 13.75"	3.5" x 4.5" x 18.75"	3.5" x 4.5" x 24.75"	3.5" x 4.5" x 28.75"
Weight	4.4 lb	5.3 lb	6.4 lb	7.3 lb
Pallet Qty.	168 PCS.	140 PCS.	112 PCS.	98 PCS.

SYSTEMS W/O FAUCET

Item No.	FUS100A11	FUS100A16	FUS100A22	FUS100A26
Dimensions (W x D x H)	3.5" x 4.5" x 13.75"	3.5" x 4.5" x 18.75"	3.5" x 4.5" x 24.75"	3.5" x 4.5" x 28.75"
Weight	3.6 lb	4.6 lb	5.7 lb	6.5 lb
Pallet Qty.	168 PCS.	140 PCS.	112 PCS.	98 PCS.

REPLACEMENT FILTERS

Item No.	RPFFUS10011	RPFFUS10016	RPFFUS10022	RPFFUS10026
Dimensions (Dia. x H)	3.5" x 12.875"	3.5" x 17.875"	3.5" x 23.875"	3.5" x 27.875"
Weight	2 lb	2.9 lb	3.9 lb	4.6 lb
Pallet Qty.	357 PCS.	272 PCS.	204 PCS.	153 PCS.

*The filter capacity and flow rate may vary depending on the water quality, water pressure, and the operating condition of the filtration system.

Brio
WHOLE HOUSE
SYSTEMS



Improve the water quality throughout your home or business by combining our whole house filter, UV lamps, carbon filter and water softener systems. Our systems work seamlessly together to produce better drinking water while prolonging the life of your appliances and more.



BRIO WHOLE HOUSE FILTRATION SYSTEMS

Available in four models to fit your specific needs, the Brio Whole House Filtration System features powerful filtration and quality construction. Built with a durable stainless steel frame and easy-to-replace filters, it protects your household from potentially harmful water.



FSWH300STD

4 MODELS BUILT FOR YOUR WATER NEEDS:

ST STANDARD

For common water problems like odor, taste, and color.

1. Sediment Filter
2. GAC Filter
3. CTO Filter (5-micron)

HM HEAVY METALS

Designed to remove chlorine and metals, including lead and mercury.

1. Sediment Filter
2. GAC + KDF Filter
3. CTO Filter (5-micron)

AN ANTI-SCALE

Protects pipes and household appliances from scale and corrosion.

1. Sediment Filter
2. PHO Filter (0.5 kg)
3. CTO Filter (5-micron)

IM IRON & MANGANESE REMOVAL

Eliminates metals from water such as iron and manganese.

1. Sediment Filter
2. CTO Filter (5-micron)
3. Iron & Manganese Removal Resin

SYSTEM SPECIFICATIONS

Item No.	FSWH300STD	FSWH300KDF	FSWH300PHO	FSWH300IMR
Filtration	Standard	Heavy Metal	Anti-Scale	Iron & Manganese Removal
Product Dim.	23.6" W x 8.8" D x 30.6" H			
Packing Dim.	25.6" W x 11" D x 32.7" H			
Net Weight	54 lb	55.8 lb	50.5 lb	54 lb
Pallet Qty. / Container Qty.	10 PCS. / 450 PCS.			



FILTER SPECIFICATIONS

Item No.	RFCTY45205PP	RFCTY45205GAC	RFCTY45205CTO	RFCTY45205KDF	RFCTY45205PHO	RFCTY45205IMR
Filter Type	Sediment	GAC	CTO	GAC + KDF (1 kg)	PHO (0.5 kg)	Iron & Manganese Removal
Product Dim.	4.5" Dia. x 20" H					
Net Weight	1.8 lb	5.5 lb	5.5 lb	7.3 lb	2 lb	5.5 lb
Pallet Qty.	280 PCS.	240 PCS.	240 PCS.	240 PCS.	240 PCS.	240 PCS.

BRIO UV WATER PURIFIERS

The Brio UV (Ultraviolet) Water Purifier is a safe chemical-free sterilizer that does not alter water chemical composition. It is effective against a broad range of microorganisms including viruses and parasitic cysts. Combine with select Brio water filtration systems for a safe and delicious hydration experience.

KEY FEATURES:

- High quality UV ballast meets CE and UL standard
- Rigorously tested & reliable high-performance UV lamp
- Controller will sound an alarm if lamp fails
- Low power consumption and simple maintenance

COMPONENTS:

- (2) Ultraviolet lamp
- (1) Electronic lamp ballast
- (1) Quartz sleeve
- (1) Stainless-steel housing
- (2) Silicone o-ring
- (2) Mounting clip
- (2) Endcaps



SPECIFICATIONS:

Item No.	Flow Rate	Dimensions	Replacement UV Lamp	Replacement Ballast
UVS03	0.3 GPM	7.7" W x 2" D x 2" H	UVL03	UVB03
UVS05	0.5 GPM	10" W x 2" D x 2" H	UVL05	UVB05
UVS1	1 GPM	12.2" W x 2" D x 2" H	UVL1	UVB1
UVS2	2 GPM	14.6" W x 2.5" D x 2.5" H	UVL2	UVB2
UVS6	6 GPM	23.2" W x 2.5" D x 2.5" H	UVL6	UVB6
UVS8	8 GPM	35.8" W x 2.5" D x 2.5" H	UVL8	UVB8
UVS9	9 GPM	37.4" W x 2.5" D x 2.5" H	UVL9	UVB9
UVS10	10 GPM	34.8" W x 2.5" D x 2.5" H	UVL10	UVB10
UVS12	12 GPM	37.4" W x 2.5" D x 2.5" H	UVL12	UVB12



Solution for Bacteria

Harmful microbes, including E. coli, cryptosporidium, and giardia can be lurking in your water supply and are only detectable with a water quality test.

Ultraviolet light is a highly effective process that can kill or inactivate these harmful microbes by damaging their genetic material. Achieved without the use of chemicals, the process ensures your water is safe to drink and use.

BRIO WHOLE HOUSE CARBON FILTER SYSTEM



CERTIFIED TO
NSF/ANSI 44
NSF/ANSI 372

Activated Carbon

Reduces chlorine, organic and organochlorine compounds and improves water color, taste, and odor.

BRIO CARBON FILTER

Brio Carbon Filter Systems effectively reduce unwanted tastes and odors, including chlorine. The granular activated carbon is made from a select grade of bituminous coal that has been acid washed for optimal filtration. With a user-friendly control valve, the system is available in 3 FRP tank capacities (9"x48", 10"x54", and 12"x52").

CONTROL VALVE FEATURES:

- Patented ceramic disc
- Bright LCD display
- 7 Advanced programming options
- 72-Hour memory backup
- 1" Ceramic bypass w/ flow meter

FRP PRESSURE TANK FEATURES:

- Seamless polyethylene tank liner
- Precision fiber-wound exterior
- Precision injection-molded base

9x48 CARBON FILTER SYSTEM **WSK4225**

Control Valve	WSVH1699
Inlet / Outlet	1" / 1"
Drain	3/4"
Riser Tube	1.05" OD
Raw Water Bypass	Yes
Dimensions	7.5" W x 15.5" D x 6" H
Ceramic Bypass Flow Meter	WSBV1705
FRP Tank	WSPT1736
Carbon Volume	0.88 cu. ft.
Flow Rate	2 GPM
FRP Tank Size	9" Dia. x 48" H
Pieces on Pallet	6

COMPONENTS:

- 1 Control Valve w/ LCD Display
- 2 Ceramic Bypass w/ Flow Meter
- 3 FRP Pressure Tank
- 4 Activated Carbon



Each system comes with:
**CONTROL VALVE + FRP TANK
+ ACTIVATED CARBON**



**10x54 CARBON
FILTER SYSTEM**
WSK4232

**12x52 CARBON
FILTER SYSTEM**
WSK4249

**STAINLESS STEEL
FRP TANK JACKETS**



9x48

10x54

12x52

JACKETS

	WSK4232	WSK4249
Control Valve	WSVH1699	WSVH1699
Inlet / Outlet	1" / 1"	1" / 1"
Drain	3/4"	3/4"
Riser Tube	1.05" OD	1.05" OD
Raw Water Bypass	Yes	Yes
Dimensions	7.5"Wx15.5"Dx6"H	7.5"Wx15.5"Dx6"H
Ceramic Bypass Flow Meter	WSBV1705	WSBV1705
FRP Tank	WSPT1712	WSPT1729
Carbon Volume	1.32 cu. ft.	1.76 cu. ft.
Flow Rate	2.5 GPM	3.8 GPM
FRP Tank Sizes	10" Dia. x 54" H	12" Dia. x 52" H
Pieces on Pallet	6	6

Item No.	SSC5321	SSC5277	SSC5352
Tank Size	9" x 48"	10" x 54"	12" x 52"
Height	41.3"	48.8"	45.6"
Diameter	9.3"	10.4"	12.5"
Stainless Steel Type	201	201	201
Thickness	0.05"	0.05"	0.05"
Construction	Welded	Welded	Welded
Surface Finish	Mirror	Mirror	Mirror

Available for FRP Tank Sizes:
9x48, 10x54, 12x52

BRIO WHOLE HOUSE WATER SOFTENER SYSTEM



CERTIFIED TO
NSF/ANSI 44
NSF/ANSI 372

BRIO WATER SOFTENERS

Brio Water Softeners reduce hardness in water with a powerful system that includes a brine tank that minimizes water usage during regeneration. With a user-friendly control valve, they provide consistently soft water that satisfies a range of needs. The efficient system also has a high flow rate and is available in 3 FRP tank capacities (9"x48", 10"x54", and 12"x52").

CONTROL VALVE FEATURES:

- Patented ceramic disc
- Bright LCD display
- 7 Advanced programming options
- 72-Hour memory backup
- 1" Ceramic bypass w/ flow meter

FRP PRESSURE TANK FEATURES:

- Seamless polyethylene tank liner
- Precision fiber-wound exterior
- Precision injection-molded base

BRINE TANK FEATURES:

- Smooth polyethylene / ABS cover
- Tank standoff and overflow elbow
- Capacity: 20 - 26 gallons (74 - 100 L)

9x48 SOFTENER SYSTEM

WSK1965

Control Valve	WSVH1699
Inlet / Outlet	1" / 1"
Drain / Brine	3/4" / 3/8"
Riser Tube	1.05" OD
Hard Water Bypass	Yes
Dimensions	7.5" W x 15.5" D x 6" H
Ceramic Bypass Flow Meter	WSBV1705
FRP Tank	WSPT1736
Resin Volume	1 cu. ft.
Capacity @ 15 lb	30,000/cu. ft.
Flow Rate	6 - 8 GPM
FRP Tank Size	9" Dia. x 48" H
Brine Tank	WSBT1743
Capacity	20 - 26 Gallons (74 - 100 L)
Dimensions	15.5" W x 15.5" D x 38" H
Pieces on Pallet	6

COMPONENTS:

- 1 Control Valve w/ LCD Display
- 2 Ceramic Bypass w/ Flow Meter
- 3 FRP Pressure Tank
- 4 Resin & Gravel
- 5 Brine Tank





10x54 SOFTENER SYSTEM

WSK1972

Control Valve	WSVH1699
Inlet / Outlet	1" / 1"
Drain / Brine	3/4" / 3/8"
Riser Tube	1.05" OD
Hard Water Bypass	Yes
Dimensions	7.5" W x 15.5" D x 6" H
Ceramic Bypass Flow Meter	WSBV1705
FRP Tank	WSPT1712
Resin Volume	1.5 cu. ft.
Capacity @ 15 lb	45,000/cu. ft.
Flow Rate	8 - 10 GPM
FRP Tank Size	10" Dia. x 54" H
Brine Tank	WSBT1743
Capacity	20 - 26 Gallons (74 - 100 L)
Dimensions	15.5" W x 15.5" D x 38" H
Pieces on Pallet	6

12x52 SOFTENER SYSTEM

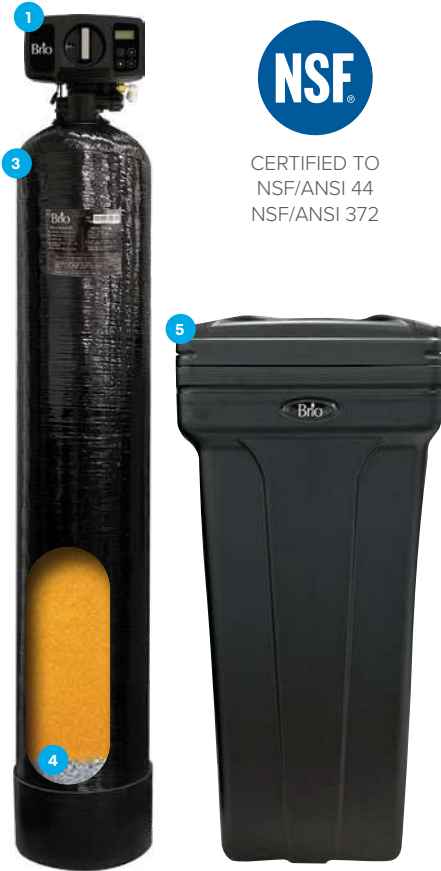
WSK1989

Control Valve	WSVH1699
Inlet / Outlet	1" / 1"
Drain / Brine	3/4" / 3/8"
Riser Tube	1.05" OD
Hard Water Bypass	Yes
Dimensions	7.5" W x 15.5" D x 6" H
Ceramic Bypass Flow Meter	WSBV1705
FRP Tank	WSPT1729
Resin Volume	2 cu. ft.
Capacity @ 15 lb	60,000/cu. ft.
Flow Rate	10 - 12 GPM
FRP Tank Size	12" Dia. x 52" H
Brine Tank	WSBT1743
Capacity	20 - 26 Gallons (74 - 100 L)
Dimensions	15.5" W x 15.5" D x 38" H
Pieces on Pallet	6

Each system comes with:
CONTROL VALVE + FRP TANK w/ RESIN + BRINE TANK

FRP tanks come with Brio Resin 8% DVB media. Brine tank salt sold separately.

BRIO WHOLE HOUSE WATER SOFTENER SYSTEM



CERTIFIED TO
NSF/ANSI 44
NSF/ANSI 372

BRIO WATER SOFTENERS

Reduce hardness in your water and eliminate scale and spot build up with a Brio Water Softener System. Equipped with a brine tank, built-in digital control console, and user-friendly control valve, this reliable system efficiently regenerates, cleans and performs. Available in 3 FRP tank capacities (9"x48", 10"x54", and 12"x52").

CONTROL VALVE FEATURES:

- Regeneration knob
- LCD display / 3 programming levels
- 48-Hour battery backup and memory
- Independent inlet and outlet control bypass valves with flow meter

FRP PRESSURE TANK FEATURES:

- Seamless polyethylene tank liner
- Precision fiber-wound exterior
- Precision injection-molded base

BRINE TANK FEATURES:

- Smooth polyethylene / ABS cover
- Tank standoff and overflow elbow
- Capacity: 20 - 26 gallons (74 - 100 L)

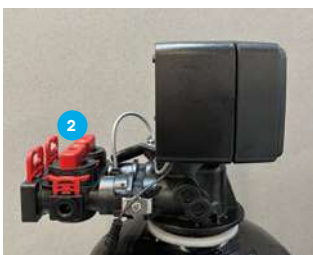
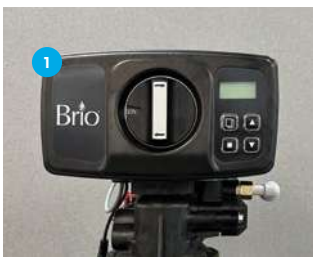
9x48 SOFTENER SYSTEM

WSFS3730

Control Valve	WSVH3679
Inlet / Outlet	1" / 1"
Drain / Brine	3/4" / 3/8"
Hard Water Bypass	Yes
Dimensions	7.75" W x 10" D x 7.25" H
FRP Tank	WSPT3686
Resin Volume	1 cu. ft.
Capacity @ 15 lb	30,000/cu. ft.
Flow Rate	6 - 8 GPM
FRP Tank Size	9" Dia. x 48" H
Brine Tank	WSBT3716
Capacity	20 - 26 Gallons (74 - 100 L)
Dimensions	15" W x 15" D x 35" H
Pieces on Pallet	6

COMPONENTS:

- 1 Control Valve w/ LCD Display
- 2 Bypass w/ Flow Meter
- 3 FRP Pressure Tank
- 4 Resin & Gravel
- 5 Brine Tank

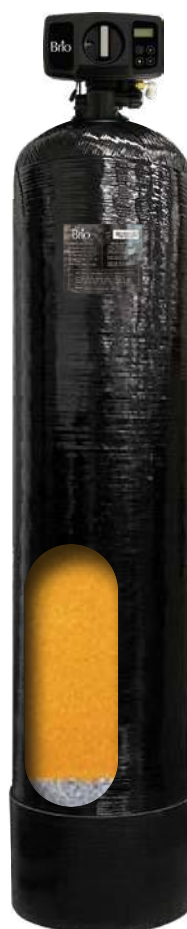




10x54 SOFTENER SYSTEM

WSFS3747

Control Valve	WSVH3679
Inlet / Outlet	1" / 1"
Drain / Brine	3/4" / 3/8"
Hard Water Bypass	Yes
Dimensions	7.75" W x 10" D x 7.25" H
FRP Tank	WSPT3693
Resin Volume	1.5 cu. ft.
Capacity @ 15 lb	45,000/cu. ft.
Flow Rate	8 - 10 GPM
FRP Tank Size	10" Dia. x 54" H
Brine Tank	WSBT3716
Capacity	20 - 26 Gallons (74 - 100 L)
Dimensions	15" W x 15" D x 35" H
Pieces on Pallet	6



12x52 SOFTENER SYSTEM

WSFS3754

Control Valve	WSVH3679
Inlet / Outlet	1" / 1"
Drain / Brine	3/4" / 3/8"
Hard Water Bypass	Yes
Dimensions	7.75" W x 10" D x 7.25" H
FRP Tank	WSPT3709
Resin Volume	2 cu. ft.
Capacity @ 15 lb	60,000/cu. ft.
Flow Rate	10 - 12 GPM
FRP Tank Size	12" Dia. x 52" H
Brine Tank	WSBT3716
Capacity	20 - 26 Gallons (74 - 100 L)
Dimensions	15" W x 15" D x 35" H
Pieces on Pallet	6

Each system comes with:

CONTROL VALVE + FRP TANK w/ RESIN + BRINE TANK

FRP tanks come with Brio Resin 8% DVB media. Brine tank salt sold separately.



ECOMIX®
MADE IN EUROPE
SINCE 1998



COMPONENTS:

- 1 Control Valve w/ LCD Display
- 2 Ceramic Bypass w/ Flow Meter
- 3 FRP Pressure Tank
- 4 Brine Tank
- 5 ECOMIX® C

WATER SOFTENER w/ ECOMIX®

Brio Water Softener with ECOMIX® is a powerful water softener system with a multi-component, complex filter media for softening and removing major contaminants from well or municipal water. System is available in 3 FRP capacities.

KEY FEATURES

- Soft water without iron, manganese and NOM (natural organic matter)
- Treats 5 of the most common water quality problems with 1 filter
- Eliminates metallic taste of water
- Reduces cloudy color and unpleasant odors
- 5 years of reliable service life

Reduces contaminants up to:

Hardness	45 gpg
Iron	15 ppm
Manganese	3 ppm
TOC - Total Organic Carbon	17 ppm
Tannins	3 ppm
Ammonium	4 ppm

ECOMIX® C	RESIN MEDIA
ECOMIXC12L	12 L Bag (0.42 cu. ft.)
ECOMIXC25L	25 L Bag (0.88 cu. ft.)



CERTIFIED BY WQA TO
 NSF/ANSI 44, 61, 372

SOFTENER SYSTEM w/ ECOMIX®	WSK5284 (9x48)	WSK5291 (10x54)	WSK5307 (12x52)
FRP Tank	WSPT1736	WSPT1712	WSPT1729
Resin Volume	1 cu. ft.	1.5 cu. ft.	2 cu. ft.
Capacity @ 15 lb	30,000/cu. ft.	45,000/cu. ft.	60,000/cu. ft.
FRP Tank Sizes	9" Dia. x 48" H	10" Dia. x 54" H	12" Dia. x 52" H
Flow Rate	4.5 GPM	5.7 GPM	8 GPM
Control Valve	WSVH1699 (7.5" W x 15.5" D x 6" H)		
Ceramic Bypass Flow Meter	WSB1705		
Brine Tank	WSBT1743 (15.5" W x 15.5" D x 38" H)		

BRIO WATER SOFTENER WITH ECOMIX



ACTIVATED CARBON

The Activated Carbon is made from a select grade of bituminous coal in granulated form that has been acid washed for low ash content and optimal filtration.

WSCH1001	Activated Carbon, 1.0 cu. ft. Bag, 12" x 40"
-----------------	--



BRIO CATION EXCHANGE RESIN

The Brio Cation Exchange Resin is a premium food-grade gel type strong acid cation exchange resin produced by sulfonated styrene-divinylbenzene (DVB) copolymers in standard Gaussian size distribution. It has excellent chemical, physical, and thermal stability. It is highly efficient when used in both regenerable softeners and non-regenerable cartridges.

	Polymer Matrix Structure
--	--------------------------

FLRZ1217/FLRZ3396	Polystyrene crosslinked with 8% DVB
FLRZ3402	Polystyrene crosslinked with 10% DVB



BRIO MIXED BED DEIONIZATION RESIN

High-quality mixed bed deionization resin mixture is composed of strong acid cation resin in H⁺ form and strong base type 1 anion resin in OH⁻ form. We offer 3 types for DI resins for a variety of applications.

FLRZ3419	Mixed Bed DI Type-C
-----------------	---------------------

It is designed for general purpose deionizing applications and spot-free rinsing, such as WEDM, window washing, aquarium, etc. It can achieve almost complete reduction of TDS and conductivity <0.1 us/cm (resistivity at 10 megohms).

FLRZ3426	Mixed Bed DI Type-E
-----------------	---------------------

It is designed for all mixed bed deionization applications that require high resistivity and high capacity. It is particularly well suited for dental equipment, camera lens cleaning, metal cleaning, laboratory ultrapure water preparation and beverage industry. It can achieve almost complete reduction of TDS and conductivity <0.067 us/cm (resistivity at 15 megohms).

FLRZ3433	Mixed Bed DI Type-P
-----------------	---------------------

It utilizes a highly regenerated cation component paired with an ultra-low TOC highly regenerated anion component. It is particularly well suited for electronic components, semiconductors, circuit boards, electronic industry, condensate water treatment, and precious metal cleaning. It can achieve almost complete reduction of TDS and conductivity <0.056 us/cm (resistivity at 18 megohms).



Brio

COMMERCIAL
FILTRATION
SYSTEMS

Brio Commercial Filtration Systems deliver premium and powerful filtration for numerous commercial purposes, including cafés, restaurants and more. They feature the latest in water filtration technology, provide superior purified water, and the industry-leading line-up can satisfy a large range of output needs.

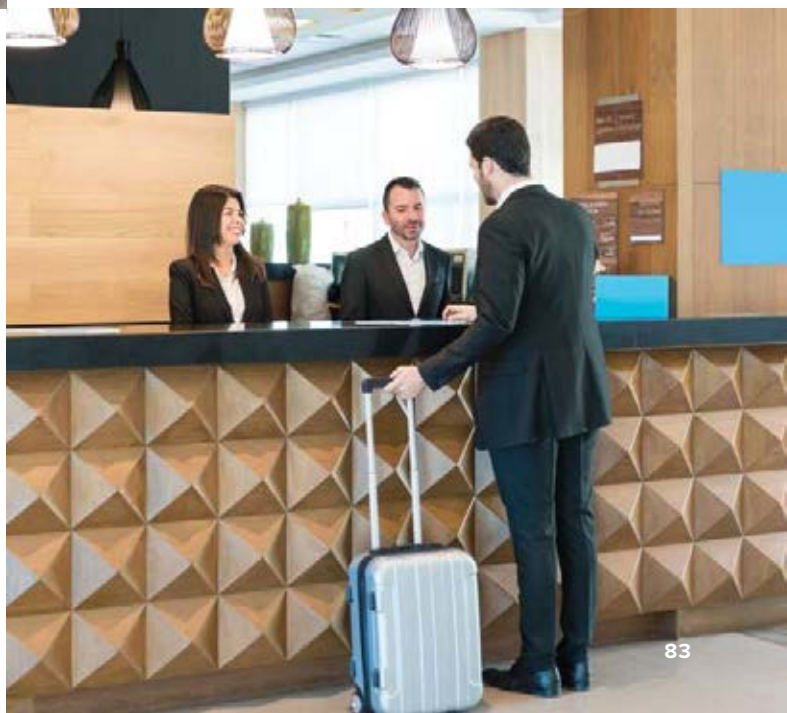
Cafés & Restaurants



Car Washes & Small Businesses



Hospitality Industry & Commercial Businesses





EACH SYSTEM INCLUDES:

- ROust unit
- Filter cartridges
- Connection fittings pack
- Service wrenches
- User manual

BRIO ROBUST RO SYSTEMS

Brio ROust Reverse Osmosis Systems are ideal for demanding commercial settings that require high capacity and are available with a range of membrane capacities. These compact systems provide powerful water filtration without a tank but have the option for bladder tanks so as your demand grows you can expand your tank options. User-friendly, the systems feature easy push-fit connectors and built-in gauges for monitoring water pressure. Our ROust systems come with everything you need to get your commercial system up and running.

Suitable for cafés, restaurants, bakeries, hotels, apartments, private houses, ice production, aquariums, car washes, laboratories, dental offices, printing companies, factories, and warehouses.

ROBUST 300

KEY FEATURES:

- 50% Recovery
- 300 GPD booster pump
- 6-Stage filtration process
- Compact design
- Built-in pressure gauges
- Made in Europe

SPECIFICATIONS:

Item No.	UROBUST300
Daily Capacity*	300 GPD
Flow Rate*	0.25 GPM
Power Consumption	0.08 kW
Dimensions (W x D x H)	16.75" x 10.25" x 16.25"
Weight	33 lb
Pallet Qty.	24 PCS.



UROBUST300

PP5, GAC & CTO filters included.
Unit requires 3 RO membranes,
membranes sold separately.

**Production and quality of reverse osmosis-purified water produced is dependent upon inlet water quality and TDS, water temperature, quality of water pre-treatment, daily consumption, operating conditions, and the manufacturer's membrane specifications. Regular servicing by a professional and timely filter replacements are highly recommended for optimal performance.*

Powerful Filtration For High-Capacity Demands

Brio ROust RO Systems feature a space-saving compact design and user-friendly operation. Built for high capacity production, they're perfect for cafés, restaurants, and more.



ROBUST 300
6-Stage filtration



ROBUST PRO 500 GL
Best for coffee



ROBUST 1000
Up to 1000 GPD



Easy-to-Read Pressure Gauges

4-Stage Filtration System

Durable Construction

Features may vary from model to model, please refer to product manual for details.

ROBUST 500 SL



500-700
GPD OF RO
WATER

UROBUST500SL

PP5, GAC & CTO filters included.
RO membrane sold separately.

ROBUST 500 SL

KEY FEATURES:

- 50% Recovery
- 600 GPD booster pump
- 4-Stage filtration process
- Built-in pressure gauges
- Made in Europe

SPECIFICATIONS:

Item No.	UROBUST500SL
Daily Capacity*	500 - 700 GPD
Flow Rate*	0.35 - 0.50 GPM
Power Consumption	0.08 kW
Dimensions (W x D x H)	14.25" x 11.75" x 16.375"
Weight	39.6 lb
Pallet Qty.	24 PCS.



BEST FOR
COFFEE

UROBUSTPROGL

PP5, GAC, CTO & PRO filters included.
RO membrane sold separately.

ROBUST PRO 500 GL

The Brio ROburst PRO 500 GL is specifically designed to enhance the taste of coffee by offering the perfect balance of minerals in the water.

KEY FEATURES:

- Adds magnesium to water
- 50% Recovery
- 300 GPD booster pump
- 5-Stage filtration process
- Built-in pressure gauges
- Made in Europe

SPECIFICATIONS:

Item No.	UROBUSTPROGL
Daily Capacity*	500 - 700 GPD
Flow Rate*	0.35 - 0.50 GPM
Power Consumption	0.08 kW
Dimensions (W x D x H)	14.25" x 11.75" x 16.375"
Weight	41 lb
Pallet Qty.	24 PCS.



Trusted by professional baristas,
it complies with SCA standards,
providing the best quality
water for making coffee.

	SCA STANDARD¹	ROBUST PRO
Total Hardness, GPG	2.9 - 5.0	2.9 - 3.5
Bicarbonates, ppm HCO ₃	40 - 75	40 - 70
pH	6.5 - 7.5	6.7 - 7.3
TDS, ppm	75 - 250	60 - 120

¹The Specialty Coffee Association Water Quality Handbook

*Production and quality of reverse osmosis-purified water produced is dependent upon inlet water quality and TDS, water temperature, quality of water pre-treatment, daily consumption, operating conditions, and the manufacturer's membrane specifications. Regular servicing by a professional and timely filter replacements are highly recommended for optimal performance.

ROBUST 1000

KEY FEATURES:

- 50% Recovery
- 1 GPM Aquatec booster pump
- 4-Stage filtration process
- Compact design
- Built-in pressure gauges
- Made in Europe

SPECIFICATIONS:

Item No.	UROBUST1000
Daily Capacity*	1,000 - 1,400 GPD
Flow Rate*	0.7 - 1 GPM
Power Consumption	0.25 kW
Dimensions (W x D x H)	20.3" x 15.7" x 18.4"
Weight	72.75 lb
Pallet Qty.	24 PCS.



UROBUST1000
2 CTO filters included.
Unit requires 2 RO membranes,
membranes sold separately.

ROBUST SYSTEM REPLACEMENT FILTERS & ACCESSORIES

FILTER PACKS



RFK1934
ROBust Filter Pack
PP5 / GAC / CTO

For ROBust 300 & 500



RF4PKROBUST
ROBust PRO 500 Pack
PP5 / GAC / CTO / PRO

For ROBust PRO 500



RFCT451010CT
CTO Filter
10 Microns

For ROBust 1000

MEMBRANES



RFROM1812100
100 GPD
RO Membrane

For ROBust 300



RFROM3012600
600 GPD
RO Membrane

For ROBust 500,
PRO 500 & 1000

STAINLESS STEEL BLADDER TANKS



ATK9MW
9 Gallon
13" Dia. x 17" H



ATK20MW
20 Gallon
20" Dia. x 29" H



ATK40MW
40 Gallon
22" Dia. x 38" H

FITTING PACK



ROBUSTKIT
ROBust Connection Fitting Pack
(Connect up to 3 appliances)



BRIO SLIM 1- & 2-MEMBRANE COMMERCIAL RO SYSTEMS

The compact Brio Slim Commercial RO System features a small footprint and is built for an array of business and residential applications. This reliable turnkey solution delivers powerful filtration through a modern system for reliable high-capacity production of purified water.

Suitable for whole house RO system, café & restaurant, bakery, hotel, water store, ice production, car wash & laundromat, brewery & beverage production, greenhouse, farm, factory & warehouse, steam boiler, and other commercial applications with smaller spaces

KEY FEATURES:

- Made In Europe
- Grundfos® CM 1-7 (AISI 304 impeller and pump housing)
- Up to 75% recovery rate with concentrate recycle
- Compact design
- Premium components
- TDS and temperature monitor
- Adjustable pressure switches
- Pressure line throttle valve regulator
- Dry-run and high pressure protection
- Antiscalant dosing connection port

SPECIFICATIONS:

Item No.	CROS4577	CROS4584
Flow Rate*	1 - 1.7 GPM	2.2 - 3.8 GPM
Power	115 V, 60 Hz, 16 Amps	115 V, 60 Hz, 16 Amps
Power Consumption	1.1 kW	1.1 kW
Weight (System / In Crate)	99 lb / 121 lb	110 lb / 132 lb
System Dimensions	12" W x 15" D x 59" H	12" W x 15" D x 59" H
Crate Dimensions	12" W x 16" D x 65" H	12" W x 16" D x 65" H
Pallet Qty.	8 PCS.	8 PCS.

*Depends on membrane type, feedwater TDS, temperature, and permeate recovery.

Note: Production and quality of reverse osmosis-purified water produced is dependent upon inlet water quality, water temperature, quality of water pre-treatment, consumption rate, operating conditions, and the manufacturer's membrane specifications. Regular servicing by a professional and timely filter replacements are highly recommended for optimal performance.

KEY COMPONENTS:

- Grundfos® High Pressure Pump
- OC5000 Controller
- (1), (2) Membrane Vessel - 4"x40" (300 PSI)
- Gauges & Flowmeters

RO Membrane Sold Separately



BRIO SLIM 4-MEMBRANE COMMERCIAL RO SYSTEM

The compact Brio Slim Commercial RO System features a small footprint and is built for an array of business and residential applications. This reliable turnkey solution delivers powerful filtration through a modern system for reliable high-capacity production of purified water.

Suitable for whole house RO system, café & restaurant, bakery, hotel, water store, ice production, car wash & laundromat, brewery & beverage production, greenhouse, farm, factory & warehouse, steam boiler, and other commercial applications with smaller spaces

KEY FEATURES:

- Made In Europe
- Grundfos® CM 3-8 (AISI 304 impeller and pump housing)
- Up to 75% recovery rate with concentrate recycle
- Compact design
- Premium components
- TDS and temperature monitor
- Adjustable pressure switches
- Pressure line throttle valve regulator
- Dry-run and high pressure protection
- Antiscalant dosing connection port

SPECIFICATIONS:

Item No.	CROS4591
Flow Rate*	4.4 - 6.6 GPM
Power	230 V, 60 Hz, 11 Amps
Power Consumption	1.9 kW
Weight (System / In Crate)	198 lb / 220 lb
System Dimensions	20" W x 16" D x 59" H
Crate Dimensions	20" W x 16" D x 65" H
Pallet Qty.	4 PCS.

*Depends on membrane type, feedwater TDS, temperature, and permeate recovery.

Note: Production and quality of reverse osmosis-purified water produced is dependent upon inlet water quality, water temperature, quality of water pre-treatment, consumption rate, operating conditions, and the manufacturer's membrane specifications. Regular servicing by a professional and timely filter replacements are highly recommended for optimal performance.



KEY COMPONENTS:

- Grundfos® High Pressure Pump
- OC5000 Controller
- (4) Membrane Vessel - 4"x40" (300 PSI)
- Gauges & Flowmeters

RO Membrane Sold Separately



BRIO SLIM 6-MEMBRANE COMMERCIAL RO SYSTEM

The compact Brio Slim Commercial RO System features a small footprint and is built for an array of business and residential applications. This reliable turnkey solution delivers powerful filtration through a modern system for reliable high-capacity production of purified water.

Suitable for whole house RO system, café & restaurant, bakery, hotel, water store, ice production, car wash & laundromat, brewery & beverage production, greenhouse, farm, factory & warehouse, steam boiler, and other commercial applications with smaller spaces

KEY FEATURES:

- Made In Europe
- Grundfos® CM 3-8 (AISI 304 impeller and pump housing)
- Up to 75% recovery rate with concentrate recycle
- Compact slim design
- Premium components
- TDS and temperature monitor
- Adjustable pressure switches
- Pressure line throttle valve regulator
- Dry-run and high pressure protection
- Antiscalant dosing connection port

SPECIFICATIONS:

Item No.	CROS4607
Flow Rate*	6.6 - 9 GPM
Power	230 V, 60 Hz, 11 Amps
Power Consumption	1.9 kW
Weight (System / In Crate)	210 lb / 231 lb
System Dimensions	20" W x 16" D x 59" H
Crate Dimensions	20" W x 16" D x 65" H
Pallet Qty.	4 PC.

*Depends on membrane type, feedwater TDS, temperature, and permeate recovery.

Note: Production and quality of reverse osmosis-purified water produced is dependent upon inlet water quality, water temperature, quality of water pre-treatment, consumption rate, operating conditions, and the manufacturer's membrane specifications. Regular servicing by a professional and timely filter replacements are highly recommended for optimal performance.



KEY COMPONENTS:

- Grundfos® High Pressure Pump
- OC5000 Controller
- (6) Membrane Vessel - 4"x40" (300 PSI)
- Gauges & Flowmeters

RO Membrane Sold Separately



BRIO SMRO2440 SKID-MOUNTED COMMERCIAL RO SYSTEM

The Brio Skid-Mounted Reverse Osmosis System is designed to efficiently remove salts, minerals and contaminants. This powerful system is made in Europe with high-quality components, features a small footprint, and is plug & play ready for an array of commercial applications, including hospitality, laundromat, brewery & beverage production, farm, factory, steam boiler, and more.

SPECIFICATIONS:

Item No.	SMRO2440
Flow Rate*	2.2 - 3.8 GPM
Power	220 V, 60 Hz, 19 Amps
Power Consumption	2.3 kW
Weight (System / In Crate)	360 lb / 560 lb
System Dimensions	107" W x 30" D x 66" H

*Depends on membrane type, feedwater TDS, temperature, and permeate recovery.

Note: Production and quality of reverse osmosis-purified water produced is dependent upon inlet water quality, water temperature, quality of water pre-treatment, consumption rate, operating conditions, and the manufacturer's membrane specifications. Regular servicing by a professional and timely filter replacements are highly recommended for optimal performance.

KEY COMPONENTS:

- Sediment Filter
- Feedwater Tank
- Feedwater Booster Pump
- Carbon Filters
- Antiscalant Dosing Station
- Gauges & Flowmeters
- Electrical Control Panel
- UV Lamp
- Alkaline Filter Option
- Mixed Bed Option
- TDS Temperature Monitor
- Post Filter
- Housing Tank
- Permeate Booster Pump



BRIO 1-MEMBRANE COMMERCIAL REVERSE OSMOSIS SYSTEM

Delivering high-capacity commercial production of purified water, the Brio 1-Membrane Commercial Reverse Osmosis System features powerful filtration through a modern system that is simple to maintain and use.

Suitable for whole house RO system, café & restaurant, bakery, hotel, water store, ice production, car wash & laundromat, brewery & beverage production, greenhouse, farm, factory & warehouse, steam boiler, heating & cooling circuit, and other commercial applications

KEY FEATURES:

- Made In Europe
- Grundfos® CM 1-7 (AISI 304 impeller and pump housing)
- Up to 75% recovery rate with concentrate recycle
- Compact design
- Premium components
- TDS and temperature monitor
- Adjustable pressure switches
- Pressure line throttle valve regulator
- Dry-run and high pressure protection
- Antiscalant dosing connection port

KEY COMPONENTS:

- Grundfos® High Pressure Pump
- OC5000 Controller
- (1) Membrane Vessel - 4"x40" (300 PSI)
- Sediment Filter - 4.5"x20" / 5-Micron
- Gauges & Flowmeters

RO Membrane Sold Separately

SPECIFICATIONS:

Item No.	CROS2400
Flow Rate*	1 - 1.7 GPM
Power	115 V, 60 Hz, 16 Amps
Power Consumption	1.1 kW
Weight (System / In Crate)	132.3 lb / 198.4 lb
System Dimensions	21" W x 15" D x 57" H
Crate Dimensions	24" W x 18" D x 61" H
Pallet Qty.	4 PCS.

*Depends on membrane type, feedwater TDS, temperature, and permeate recovery.

Note: Production and quality of reverse osmosis-purified water produced is dependent upon inlet water quality, water temperature, quality of water pre-treatment, consumption rate, operating conditions, and the manufacturer's membrane specifications. Regular servicing by a professional and timely filter replacements are highly recommended for optimal performance.

BRIO 2-MEMBRANE COMMERCIAL REVERSE OSMOSIS SYSTEM

Delivering high-capacity commercial production of purified water, the Brio 2-Membrane Commercial Reverse Osmosis System features powerful filtration through a modern system that is simple to maintain and use.

Suitable for whole house RO system, café & restaurant, bakery, hotel, water store, ice production, car wash & laundromat, brewery & beverage production, greenhouse, farm, factory & warehouse, steam boiler, heating & cooling circuit, and other commercial applications

KEY FEATURES:

- Made In Europe
- Grundfos® CM 1-7 (AISI 304 impeller and pump housing)
- Up to 75% recovery rate with concentrate recycle
- Compact design
- Premium components
- TDS and temperature monitor
- Adjustable pressure switches
- Pressure line throttle valve regulator
- Dry-run and high pressure protection
- Antiscalant dosing connection port

SPECIFICATIONS:

Item No.	CROS4800
Flow Rate*	2.2 - 3.8 GPM
Power	115 V, 60 Hz, 16 Amps
Power Consumption	1.1 kW
Weight (System / In Crate)	154.3 lb / 220.5 lb
System Dimensions	21" W x 15" D x 57" H
Crate Dimensions	24" W x 18" D x 61" H
Pallet Qty.	4 PCS.

*Depends on membrane type, feedwater TDS, temperature, and permeate recovery.

Note: Production and quality of reverse osmosis-purified water produced is dependent upon inlet water quality, water temperature, quality of water pre-treatment, consumption rate, operating conditions, and the manufacturer's membrane specifications. Regular servicing by a professional and timely filter replacements are highly recommended for optimal performance.



KEY COMPONENTS:

- Grundfos® High Pressure Pump
- OC5000 Controller
- (2) Membrane Vessel - 4"x40" (300 PSI)
- Sediment Filter - 4.5"x20" / 5-Micron
- Gauges & Flowmeters

RO Membrane Sold Separately



BRIO 4-MEMBRANE COMMERCIAL REVERSE OSMOSIS SYSTEM

Delivering high-capacity commercial production of purified water, the Brio 4-Membrane Commercial Reverse Osmosis System features powerful filtration through a modern system that is simple to maintain and use.

Suitable for whole house RO system, café & restaurant, bakery, hotel, water store, ice production, car wash & laundromat, brewery & beverage production, greenhouse, farm, factory & warehouse, steam boiler, heating & cooling circuit, and other commercial applications

KEY FEATURES:

- Made In Europe
- Grundfos® CM 3-8 (AISI 304 impeller and pump housing)
- Up to 75% recovery rate with concentrate recycle
- Compact design
- Premium components
- TDS and temperature monitor
- Adjustable pressure switches
- Pressure line throttle valve regulator
- Dry-run and high pressure protection
- Antiscalant dosing connection port

KEY COMPONENTS:

- Grundfos® High Pressure Pump
- OC5000 Controller
- (4) Membrane Vessel - 4"x40" (300 PSI)
- Sediment Filter - 4.5"x20" / 5-Micron
- Gauges & Flowmeters

RO Membrane Sold Separately

SPECIFICATIONS:

Item No.	CROS9600
Flow Rate*	4.4 - 6.6 GPM
Power	230 V, 60 Hz, 11 Amps
Power Consumption	1.9 kW
Weight (System / In Crate)	220.5 lb / 352.8 lb
System Dimensions	27.6" W x 23" D x 59" H
Crate Dimensions	33" W x 28.2" D x 75.6" H
Pallet Qty.	1 PC.

*Depends on membrane type, feedwater TDS, temperature, and permeate recovery.

Note: Production and quality of reverse osmosis-purified water produced is dependent upon inlet water quality, water temperature, quality of water pre-treatment, consumption rate, operating conditions, and the manufacturer's membrane specifications. Regular servicing by a professional and timely filter replacements are highly recommended for optimal performance.



BRIO 6-MEMBRANE COMMERCIAL REVERSE OSMOSIS SYSTEM

Delivering high-capacity commercial production of purified water, the Brio 6-Membrane Commercial Reverse Osmosis System features powerful filtration through a modern system that is simple to maintain and use.

Suitable for whole house RO system, café & restaurant, bakery, hotel, water store, ice production, car wash & laundromat, brewery & beverage production, greenhouse, farm, factory & warehouse, steam boiler, heating & cooling circuit, and other commercial applications

KEY FEATURES:

- Made In Europe
- Grundfos® CM 3-8 (AISI 304 impeller and pump housing)
- Up to 75% recovery rate with concentrate recycle
- Compact design
- Premium components
- TDS and temperature monitor
- Adjustable pressure switches
- Pressure line throttle valve regulator
- Dry-run and high pressure protection
- Antiscalant dosing connection port

SPECIFICATIONS:

Item No.	CROS14400
Flow Rate*	6.6 - 9 GPM
Power	230 V, 60 Hz, 11 Amps
Power Consumption	1.9 kW
Weight (System / In Crate)	265 lb / 397 lb
System Dimensions	34.25" W x 23" D x 59" H
Crate Dimensions	40" W x 28.2" D x 75.6" H
Pallet Qty.	1 PC.

*Depends on membrane type, feedwater TDS, temperature, and permeate recovery.

Note: Production and quality of reverse osmosis-purified water produced is dependent upon inlet water quality, water temperature, quality of water pre-treatment, consumption rate, operating conditions, and the manufacturer's membrane specifications. Regular servicing by a professional and timely filter replacements are highly recommended for optimal performance.



KEY COMPONENTS:

- Grundfos® High Pressure Pump
- OC5000 Controller
- (6) Membrane Vessel - 4"x40" (300 PSI)
- Sediment Filter - 4.5"x20" / 5-Micron
- Gauges & Flowmeters

RO Membrane Sold Separately



Brio

INDUSTRIAL
RO SYSTEMS

Brio Industrial RO Systems provide turnkey solutions for industrial water challenges, including pilot studies, engineering/manufacturing, and commissioning/maintenance. These advanced systems are currently used in the food and pharmaceutical industries; energy, chemical, and semiconductor manufacturing; steam boilers, and many other industrial applications.

Agricultural, Chemical & Pharmaceutical Industries



Beverage/Food, Hospitality & Manufacturing Industries

Education, Healthcare & Government Institutions



BRIO MO3 INDUSTRIAL REVERSE OSMOSIS SYSTEM



System design may be amended on manufacturer's discretion without violating compliance with the process flow diagram.

APPLICATIONS

Bottled water production, food and beverage, pharmaceutical and laboratory, desalination, agriculture and farming, municipal drinking water, rinse water, boiler feedwater, utility water treatment

BRIO MO3 INDUSTRIAL REVERSE OSMOSIS SYSTEM

Item No.	MO3T15US
Product	Brio MO3
Flow Capacity, GPH	800–1,060
Membranes	(3) 8" x 40"

RO membranes sold separately.

EQUIPMENT

- (1) Grundfos® high pressure pump
- (3) 8040 membrane vessel
- (3) BB20 sediment prefilter
- (2) Motorized valves (feed water in, flush out)
- (2) Balancing valves (concentrate reject, concentrate recycle)
- (1) Electrical cabinet with controller
- (1) Piping, instrumentation, steel frame

OPTIONS

- Filmtec™ XLE-440 / ECO PRO-440 or ELP-8040 membranes
- Dosing pump for antiscalant or other RO chemicals
- Permeate inlet for permeate membrane rinse
- Raw water blending line

CONNECTION PORT SIZES

Influent water	G 1 ½"
Permeate	G 1"
Concentrate	G 1 ½"
CIP inlet	G 1 ½"
CIP return	G 1"
CIP permeate	G ½"
Antiscalant dosing port	G ½"
Weight	
Bare system	882 lb
Crated system	992 lb
Dimensions (W x D x H)	
Bare system	6.25' x 3.6' x 6.4'
Crated system	6.9' x 4' x 7.3'

*Depends on membrane type, feedwater TDS, temperature, and permeate recovery.

Note: Production and quality of reverse osmosis-purified water produced is dependent upon inlet water quality, water temperature, quality of water pre-treatment, consumption rate, operating conditions, and the manufacturer's membrane specifications. Regular servicing by a professional and timely filter replacements are highly recommended for optimal performance.

BRIO MO6 INDUSTRIAL REVERSE OSMOSIS SYSTEM

APPLICATIONS

Process water, rinse water, steam boilers, heating and cooling circuits, agriculture, desalination, food and beverage, utility water treatment.



BRIO MO6 INDUSTRIAL REVERSE OSMOSIS SYSTEM

Item No.	MO6T15US
Product	Brio MO6
Flow capacity, m ³ /h (GPH)	6–8 (1,600–2,100)
Membranes	(6) 8" x 40"

RO membranes sold separately.

System design may be amended on manufacturer's discretion without violating compliance with the process flow diagram.

CONNECTION PORT SIZES

Influent water	G 2"
Permeate	G 1 1/2"
Concentrate	G 2"
CIP inlet	G 1 1/2"
CIP return	G 1 1/2"
CIP permeate	G 1"
Antiscalant dosing port	G 1/2"
Weight	
Bare system	600 kg / 1,323 lb
Crated system	850 kg / 1,874 lb
Dimensions (W x D x H)	
Bare system	2.7 x 1.2 x 1.95 m / 8.9 x 4 x 6.4 ft
Crated system	3.04 x 1.35 x 2.24 m / 10 x 4.5 x 7.4 ft

*Depends on membrane type, feedwater TDS, temperature, and permeate recovery.

Note: Production and quality of reverse osmosis-purified water produced is dependent upon inlet water quality, water temperature, quality of water pre-treatment, consumption rate, operating conditions, and the manufacturer's membrane specifications. Regular servicing by a professional and timely filter replacements are highly recommended for optimal performance.

EQUIPMENT

- (1) Grundfos® high pressure pump
- (3) 8040-2 membrane vessel
- (4) BB20 sediment prefilter
- (2) Motorized valves (feedwater in, flush out)
- (2) Balancing valves (concentrate reject, concentrate recycle)
- (1) Electrical cabinet with controller
- (1) Piping, instrumentation, steel frame

OPTIONS

- Filmtec™ XLE-440 / ECO PRO-440 or ELP-8040 membranes
- Dosing pump for antiscalant or other RO chemicals
- Permeate inlet for permeate membrane rinse
- Raw water blending line

BRIO MO9 INDUSTRIAL REVERSE OSMOSIS SYSTEM



System design may be amended on manufacturer's discretion without violating compliance with the process flow diagram.

APPLICATIONS

Process water, rinse water, steam boilers, heating and cooling circuits, agriculture, desalination, food and beverage, utility water treatment.

BRIO MO9 INDUSTRIAL REVERSE OSMOSIS SYSTEM

Item No.	Product	Flow capacity, m ³ /h (GPH)	Membranes	
MO9	Brio MO9	9–12 (2,400–3,200)	(9) 8" x 40"	RO membranes sold separately.

EQUIPMENT

- (1) Grundfos® high pressure pump
- (3) 8040-3 membrane vessel
- (5) BB20 sediment prefilter
- (2) Motorized valves (feedwater in, flush out)
- (2) Balancing valves (concentrate reject, concentrate recycle)
- (1) Electrical cabinet with controller
- (1) Piping, instrumentation, steel frame
- (1) Steel frame

OPTIONS

- Filmtec™ XLE-440 / ECO PRO-440 or ELP-8040 membranes
- Dosing pump for antiscalant or other RO chemicals
- Permeate inlet for permeate membrane rinse
- Raw water blending line

CONNECTION PORT SIZES

Influent water	G 2"
Permeate	G 1 ½"
Concentrate	G 2"

CIP inlet	G 1 ½"
CIP return	G 1 ½"
CIP permeate	G 1"

Antiscalant dosing port	G ½"
-------------------------	------

Weight

Bare system	720 kg / 1,588 lb
-------------	-------------------

Crated system	970 kg / 2,139 lb
---------------	-------------------

Dimensions (W x D x H)

Bare system	3.9 × 1.2 × 1.95 m / 12.8 × 4 × 6.4 ft
-------------	--

Crated system	4.2 × 1.45 × 2.32 m / 13.8 × 4.8 × 7.6 ft
---------------	---

*Depends on membrane type, feedwater TDS, temperature, and permeate recovery.

Note: Production and quality of reverse osmosis-purified water produced is dependent upon inlet water quality, water temperature, quality of water pre-treatment, consumption rate, operating conditions, and the manufacturer's membrane specifications. Regular servicing by a professional and timely filter replacements are highly recommended for optimal performance.

BRIO MO12 INDUSTRIAL REVERSE OSMOSIS SYSTEM



System design may be amended on manufacturer's discretion without violating compliance with the process flow diagram.

APPLICATIONS

Process water, rinse water, steam boilers, heating and cooling circuits, agriculture, desalination, food and beverage, utility water treatment.

BRIO MO12 INDUSTRIAL REVERSE OSMOSIS SYSTEM

Item No.	Product	Flow capacity, m ³ /h (GPH)	Membranes
MO12	Brio MO12	12–15 (3,200–4,000)	(12) 8" x 40"

RO membranes sold separately.

CONNECTION PORT SIZES

Influent water	DN65 (flange)
Permeate	DN50 (G 2")
Concentrate	DN65 (flange)
CIP inlet	DN40 (G 1 1/2")
CIP return	DN40 (G 1 1/2")
CIP permeate	DN25 (G 1")
Weight	
Bare system	820 kg / 1,808 lb
Crated system	1,100 kg / 2,425 lb
Dimensions (W x D x H)	
Bare system	4.1 x 1.4 x 1.95 m / 13.5 x 4.6 x 6.4 ft
Crated system	7 x 1.55 x 2.32 m / 23 x 5.1 x 7.6 ft

*Depends on membrane type, feedwater TDS, temperature, and permeate recovery.

Note: Production and quality of reverse osmosis-purified water produced is dependent upon inlet water quality, water temperature, quality of water pre-treatment, consumption rate, operating conditions, and the manufacturer's membrane specifications. Regular servicing by a professional and timely filter replacements are highly recommended for optimal performance.

EQUIPMENT

- (1) Grundfos® high pressure pump
- (4) 8040-3 membrane vessel
- (1) Stainless steel housing with 7 PP - 2.5" x 40" filters
- (2) Motorized valves (feedwater in, flush out)
- (2) Balancing valves (concentrate reject, concentrate recycle)
- (1) Electrical cabinet with controller
- (1) Piping, instrumentation, steel frame
- (1) Steel frame

OPTIONS

- Energy efficiency with Grundfos pump
- Dosing pump for antiscalant or other RO chemicals
- Permeate inlet for permeate membrane rinse
- Raw water blending line

BRIO MO24 INDUSTRIAL REVERSE OSMOSIS SYSTEM



System design may be amended on manufacturer's discretion without violating compliance with the process flow diagram.

APPLICATIONS

Process water, rinse water, steam boilers, heating and cooling circuits, agriculture, desalination, food and beverage, utility water treatment.

BRIO MO24 INDUSTRIAL REVERSE OSMOSIS SYSTEM

Item No.	Product	Flow capacity, m ³ /h (GPH)	Membranes
MO24	Brio MO24	24–28 (6,400–7,400)	(24) 8" x 40"

EQUIPMENT

- (1) Grundfos® high pressure pump
- (6) 8040-4 membrane vessel
- (2) Stainless steel housing with 7 PP - 2.5" x 40" filters
- (2) Motorized valves (feedwater in, flush out)
- (2) Balancing valves (concentrate reject, concentrate recycle)
- (1) Electrical cabinet with controller
- (1) Piping, instrumentation
- (1) Steel frame

OPTIONS

- Filmtec™ XLE-440 / ECO PRO-440 or ELP-8040 membranes
- Dosing pump for antiscalant or other RO chemicals
- Permeate inlet for permeate membrane rinse
- Raw water blending line

CONNECTION PORT SIZES

Influent water	DN80 (flange)
Permeate	DN65 (flange)
Concentrate	DN80 (flange)
CIP inlet	DN65 (flange)
CIP return	DN65 (flange)
CIP permeate	DN40 (G 1½")
Weight	
Bare system	1,100 kg / 2,425 lb
Crated system	N/A
Dimensions (W x D x H)	
Bare system	5.3 x 1.7 x 1.75 m / 17.4 x 5.6 x 5.75 ft
Crated system	N/A

*Depends on membrane type, feedwater TDS, temperature, and permeate recovery.

Note: Production and quality of reverse osmosis-purified water produced is dependent upon inlet water quality, water temperature, quality of water pre-treatment, consumption rate, operating conditions, and the manufacturer's membrane specifications. Regular servicing by a professional and timely filter replacements are highly recommended for optimal performance.

BRIO MO48 INDUSTRIAL REVERSE OSMOSIS SYSTEM



Shown with optional CIP unit. System design may be amended on manufacturer's discretion without violating compliance with the process flow diagram.

APPLICATIONS

Process water, rinse water, steam boilers, heating and cooling circuits, agriculture, desalination, food and beverage, utility water treatment.

BRIO MO48 INDUSTRIAL REVERSE OSMOSIS SYSTEM

Item No.	Product	Flow capacity, m ³ /h (GPH)	Membranes
MO48	Brio MO48	48–56 (12,700–14,800)	(48) 8" x 40"

CONNECTION PORT SIZES

Influent water	DN100 (flange)
Permeate	DN100 (flange)
Concentrate	DN100 (flange)
CIP inlet	DN80 (flange)
CIP return	DN80 (flange)
Weight	
Bare system	1,900 kg / 4,189 lb
Crated system	N/A
Dimensions (W x D x H)	
Bare system	7 x 2.5 x 2.4 m / 23 x 8.2 x 7.9 ft
Crated system	N/A

*Depends on membrane type, feedwater TDS, temperature, and permeate recovery.

Note: Production and quality of reverse osmosis-purified water produced is dependent upon inlet water quality, water temperature, quality of water pre-treatment, consumption rate, operating conditions, and the manufacturer's membrane specifications. Regular servicing by a professional and timely filter replacements are highly recommended for optimal performance.

EQUIPMENT

- (1) Grundfos® high pressure pump
- (8) 8040-6 membrane vessel
- (2) Stainless steel housing with 7 PP - 2.5" x 40" filters
- (2) Motorized feedwater in, flush out butterfly valves
- (2) Balancing concentrate reject, concentrate recycle valves
- (1) Electrical cabinet with controller
- (1) Piping, instrumentation
- (1) Steel frame

OPTIONS

- Filmtec™ XLE-440 / ECO PRO-440 or ELP-8040 membranes
- Dosing pump for antiscalant or other RO chemicals
- Permeate inlet for permeate membrane rinse
- Raw water blending line

REPLACEMENT FILTERS & ACCESSORIES



Replacement Filters

We carry the most powerful and advanced replacement filters in the water industry.



Accessories

Designed to fulfill all your water needs, Brio produces high-quality tubing, housing, brackets, valves, and more.

Quick Connects

Brio offers a wide range of quick connects that are durable, easy to install, and feature high chemical resistance.





QUICK CHANGE COOLER FILTER CARTRIDGES

Item No.	Filter Type	Size	Capacity
NFMP5M	Sediment	3" x 10.5"	950 Gal
NFMGAC	Pre Carbon	3" x 10.5"	950 Gal
NFMCTO5M	Post Carbon	3" x 10.5"	950 Gal
NFMUF	Ultrafiltration	3" x 10.5"	1,425 Gal
NFMRO75GPD	RO Membrane	3" x 10.5"	1,900 Gal (75 GPD)
NFMGACMIN	Mineralization	3" x 10.5"	793 Gal

Quick change replacement filters fit most of Brio POU cooler units: 300 Slim Series, 300 Series, 420 2-Stage, 500 Series, 700 Series (including Moderna Series), 820 Countertop

FILTER REPLACEMENT BUNDLE PACKAGES



4-Stage RO with Mineralization

Item No.	MIB200PKF	MIB300PKF	MIB400PKUF	MIB400PKRO	MIB400PKRM
Stage 1	Sediment	Sediment	Sediment	Sediment	Sediment
Stage 2	Carbon Block	Pre Carbon	Pre Carbon	Pre Carbon	Pre Carbon
Stage 3		Carbon Block	UF Membrane	RO Membrane	RO Membrane
Stage 4			Post Carbon	Post Carbon	Mineralization

420 RO COOLER QUICK CHANGE FILTER CARTRIDGES

Item No.	Filter Type	Size	Capacity
MISEDQ5M	Sediment	3" x 10.5"	950 Gal
MIGACQ	Pre Carbon	3" x 10.5"	950 Gal
MIMQ50GPD	RO Membrane	3" x 10.5"	1,900 Gal (50 GPD)
MICARQ5M	Post Carbon	3" x 10.5"	950 Gal



MISEDQ5M MICARQ5M MIMQ50GPD MICARQ5M

For 420 4-Stage RO Cooler (CLPOURO420SCV2)

420 RO COOLER BUNDLE PACKAGE

Item No.	MI4PKRO
Stage 1	Sediment
Stage 2	Pre Carbon
Stage 3	RO Membrane
Stage 4	Post Carbon



For 420 4-Stage RO Cooler (CLPOURO420SCV2)

QUICK CHANGE LEGACY SERIES FILTER CARTRIDGES

Item No.	LFSQ105	LFGACQ10	LFCTQ105
Stage	1	2	3
Filter Type	Sediment	GAC	Carbon
Diameter x H	3" x 10.5"	3" x 10.5"	3" x 10.5"
Capacity (Gal)	1,000	1,000	1,000
Box Qty.	20 PCS.	20 PCS.	20 PCS.



LFSQ105 LFCTQ105 LFGACQ10

FILTER REPLACEMENT BUNDLE PACKAGES

Item No.	LF200PK	LF300PK	LF500PKRO
Stage 1	Sediment	Sediment	Sediment
Stage 2	GAC	GAC	GAC
Stage 3		Carbon Block	Carbon Block
Stage 4			RO Membrane
Stage 5			Post Carbon



LF200PK LF300PK LF500PKRO

BRIO ALKAFUSE DROP-IN FILTERS



Item No.	ALK2510DIV2	ALK2520DIV2	ALK4510DIV2	ALK4520DIV2
Diameter	2.5"	2.5"	4.5"	4.5"
Length	10"	20"	10"	20"
Flow Rate	3L / Min	3L / Min	6L / Min	6L / Min
Box Qty.	25 PCS.	6 PCS.	6 PCS.	9 PCS.



ALK2510DIV2 ALK2520DIV2 ALK4510DIV2 ALK4520DIV2

FUS200 & FUS300 QUICK CHANGE FILTERS

Item No.	RPFUSPP5M	RPFUSCTO5MS2	RPFUSGAC5MS3
Stage	1 (Orange)	2 (Red)	3 (Green)
Filter Type	Sediment	Carbon Block	Post Carbon
Diameter x H	3" x 10.5"	3" x 10.5"	3" x 10.5"
Capacity (Gal)	950	950	950
Box Qty.	12 PCS.	12 PCS.	12 PCS.



RPFUSPP5M RPFUSCTO5MS2 RPFUSGAC5MS3

ROP100 MULTI-STAGE RO FILTER

Item No.	RPFROP100
Filter Type	Multi-stage RO
Diameter x H	4" x 11"
Capacity (Gal)	950



RPFROP100

UF100 ULTRAFILTRATION FILTER

Item No.	RPFUF100F
Filter Type	Multi-stage UF
Diameter x H	4" x 11"
Capacity (Gal)	950



RPFUF100F

PURE RO SYSTEM BUNDLE PACKAGES

Item No.	RF5PKPURBAL	RF5PKPURCAL	RF5PKPURALK
Filter	PP5	PP5	PP5
Filter	GAC	GAC	GAC
Filter	CTOAG	CTOAG	CTOAG
Filter	Post Carbon	Post Carbon	Mineralizing
Filter	Calcium & Magnesium	Calcium Remineralizing	Alkafuse

RO membrane sold separately.



RF5PKPURBAL



RF5PKPURCAL



RF5PKPURALK

ROSL500 REPLACEMENT FILTERS

Item No.	RPFROSL500RO	RPFROSL500PCB
Filter Type	RO Membrane	PCB
Diameter x H	4" x 14.5"	4" x 14.5"
Feature	500 GPD	5 Micron



RPFROSL500RO



RPFROSL500PCB

ROSL700 REPLACEMENT FILTERS

Item No.	RPFROSL700RO	RPFROSL700PCB
Filter Type	RO Membrane	PCB
Diameter x H	4" x 14.5"	4" x 14.5"
Feature	700 GPD	5 Micron



RPFROSL700RO



RPFROSL700PCB

TROE600COL REPLACEMENT FILTERS

Item No.	RPFTROE600COLRO	RPFTROE600COLPC
Filter Type	RO Membrane	PCB
Diameter x H	4" x 14.5"	4" x 14.5"
Feature	600 GPD	5 Micron



RPFTROE600COLRO



RPFTROE600COLPC

TROE800COL REPLACEMENT FILTERS

Item No.	RPFTROE800COLRO	RPFTROE800COLPC
Filter Type	RO Membrane	PCB
Diameter x H	4" x 14.5"	4" x 14.5"
Feature	800 GPD	5 Micron



RPFTROE800COLRO



RPFTROE800COLPC

TROE1000COL REPLACEMENT FILTERS

Item No.	RPFTROE1000COLR	RPFTROE1000COLP
Filter Type	RO Membrane	PCB
Diameter x H	4" x 14.5"	4" x 14.5"
Feature	1000 GPD	5 Micron

Also Available: TROE1200COL Replacement Filters



RPFTROE1000COLR



RPFTROE1000COLP

TROE600PRISM REPLACEMENT FILTERS

Item No.	RPFTROE600PRMRO	RPFTROE600PRMPC
Filter Type	RO Membrane	PCB
Diameter x H	4" x 11"	4" x 11"
Feature	600 GPD	5 Micron



RPFTROE600PRMRO



RPFTROE600PRMPC



PRE CARBON FILTERS

Item No.	Diam.	Length	Capacity	Flow Type	Box Qty.
PTSPRC6S	2.5"	6"	650ml	S	30 PCS.
PTSPRC11S	2.5"	11"	1,200ml	S	30 PCS.
PTSPRC14S	2.5"	14"	1,400ml	S	30 PCS.
PTSPRC6U	2.5"	6"	650ml	U	30 PCS.
PTSPRC11U	2.5"	11"	1,200ml	U	30 PCS.
PTSPRC14U	2.5"	14"	1,400ml	U	30 PCS.



SEDIMENT FILTERS

Item No.	Diam.	Length	Capacity	Flow Type	Box Qty.
PTSSSED6S	2.5"	6"	650ml	S	30 PCS.
PTSSSED11S	2.5"	11"	1,200ml	S	30 PCS.
PTSSSED14S	2.5"	14"	1,400ml	S	30 PCS.
PTSSSED6U	2.5"	6"	650ml	U	30 PCS.
PTSSSED11U	2.5"	11"	1,200ml	U	30 PCS.
PTSSSED14U	2.5"	14"	1,400ml	U	30 PCS.



POST CARBON FILTERS

Item No.	Diam.	Length	Capacity	Flow Type	Box Qty.
PTSPOC6S	2.5"	6"	650ml	S	30 PCS.
PTSPOC11S	2.5"	11"	1,200ml	S	30 PCS.
PTSPOC14S	2.5"	14"	1,400ml	S	30 PCS.
PTSPOC6U	2.5"	6"	650ml	U	30 PCS.
PTSPOC11U	2.5"	11"	1,200ml	U	30 PCS.
PTSPOC14U	2.5"	14"	1,400ml	U	30 PCS.



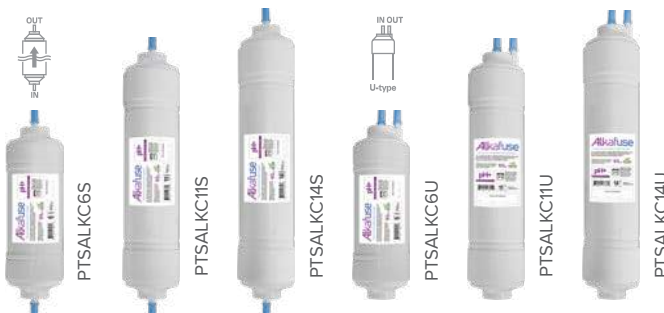
UF FILTERS

Item No.	Diam.	Length	Capacity	Flow Type	Box Qty.
PTSUF6S	2.5"	6"	650ml	S	30 PCS.
PTSUF11S	2.5"	11"	1,200ml	S	30 PCS.
PTSUF14S	2.5"	14"	1,400ml	S	30 PCS.
PTSUF6U	2.5"	6"	650ml	U	30 PCS.
PTSUF11U	2.5"	11"	1,200ml	U	30 PCS.
PTSUF14U	2.5"	14"	1,400ml	U	30 PCS.



REVERSE OSMOSIS FILTERS

Item No.	Diameter	Length	Capacity	Gal. Per Day	Box Qty.
PTS100GPD6U	2.5"	6"	650ml	100 GPD	30 PCS.
PTS150GPD6U	2.5"	6"	650ml	150 GPD	30 PCS.
PTS50GPD11U	2.5"	11"	1,200ml	50 GPD	30 PCS.
PTS75GPD11U	2.5"	11"	1,200ml	75 GPD	30 PCS.
PTS100GPD11U	2.5"	11"	1,200ml	100 GPD	30 PCS.
PTS150GPD11U	2.5"	11"	1,200ml	150 GPD	30 PCS.
PTS50GPD14U	2.5"	14"	1,400ml	50 GPD	30 PCS.
PTS75GPD14U	2.5"	14"	1,400ml	75 GPD	30 PCS.
PTS100GPD14U	2.5"	14"	1,400ml	100 GPD	30 PCS.
PTS150GPD14U	2.5"	14"	1,400ml	150 GPD	30 PCS.



ALKAFUSE FILTERS

Item No.	Diam.	Length	Capacity	Flow Type	Box Qty.
PTSALK6S	2.5"	6"	650ml	S	30 PCS.
PTSALK11S	2.5"	11"	1,200ml	S	30 PCS.
PTSALK14S	2.5"	14"	1,400ml	S	30 PCS.
PTSALK6U	2.5"	6"	650ml	U	30 PCS.
PTSALK11U	2.5"	11"	1,200ml	U	30 PCS.
PTSALK14U	2.5"	14"	1,400ml	U	30 PCS.



REVERSE OSMOSIS MEMBRANES

Reverse osmosis membranes remove up to 99.99% of contaminants for cleaner, healthier water. Designed for quick and easy replacement, they feature a pore size of 0.0001 microns and provide long-lasting filtration. Built for residential, commercial, industrial applications, choose from quality Brio and DuPont-branded membranes available in a range of GPD capacities.



Membranes are Tested and Certified by NSF International for material requirements only. Please see individual spec sheet for details.

1.8" X 12" RO MEMBRANES



Item No.	Name	GPD*	Flow Rate	Max. Temp.	Max. PSI	Salt Reject.
FLRM1101	Brio 50 GPD Membrane	50	0.03 GPM	113°F (45°C)	300	97%
FLRM1118	Brio 75 GPD Membrane	75	0.05 GPM	113°F (45°C)	300	97%
FLRM1125	Brio 100 GPD Membrane	100	0.07 GPM	113°F (45°C)	300	96%
TW30-1812-50	DuPont™ FilmTec™ TW30-1812-50HR	50	0.03 GPM	113°F (45°C)	300	99%
TW30-1812-75	DuPont™ FilmTec™ BW60-1812-75	75	0.05 GPM	113°F (45°C)	300	99%
TW30-1812-100	DuPont™ FilmTec™ TW30-1812-100HR	100	0.07 GPM	113°F (45°C)	300	98%

3" X 12" RO MEMBRANES



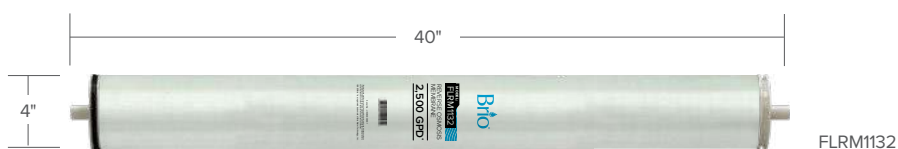
Item No.	Name	GPD*	Flow Rate	Max. Temp.	Max. PSI	Salt Reject.
RFROM3012500	Brio 3012-500	500	0.35 GPM	113°F (45°C)	300	95%
RFROM3012600	Brio 3012-600	600	0.42 GPM	113°F (45°C)	300	95%
TT-3012-600	DuPont™ TapTec™ TT-3012-600	700	0.49 GPM	113°F (45°C)	600	94%

**Production and quality of reverse osmosis-purified water produced is dependent upon inlet water quality, water temperature, quality of water pre-treatment, consumption rate, operating conditions, and the manufacturer's membrane specifications.*



2.5" X 40" COMMERCIAL RO MEMBRANES

Item No.	Name	GPD*	Flow Rate	Max. Temp.	Max. PSI	Salt Reject.
FLRM1149	Brio ULP-2540	758	0.5 GPM	113°F (45°C)	600	99.2%
XLE-2540	DuPont™ FilmTec™ XLE-2540	850	0.6 GPM	113°F (45°C)	600	99%



4" X 40" COMMERCIAL RO MEMBRANES

Item No.	Name	GPD*	Flow Rate	Max. Temp.	Max. PSI	Salt Reject.
FLRM1132	Brio ULP-4040	2,500	1.7 GPM	113°F (45°C)	600	99.2%
FLRM2825	Brio BW-4040-HR	2,200	1.5 GPM	113°F (45°C)	600	99.7%
TW30-PRO-4040	DuPont™ FilmTec™ TW30 PRO-4040	2,600	1.8 GPM	113°F (45°C)	600	99.7%
XLE-4040	DuPont™ FilmTec™ XLE-4040	2,600	1.8 GPM	113°F (45°C)	600	99%
LCLE4040	DuPont™ FilmTec™ LC LE-4040	2,500	1.7 GPM	113°F (45°C)	600	99.2%



8" X 40" INDUSTRIAL RO MEMBRANES

Name	Item No.	GPD*	Flow Rate	Max. Temp.	Max. PSI	Salt Reject.
FLRM1156	Brio ULP-8040	11,000	7.7 GPM	113°F (45°C)	600	99.2%
FLRM2832	Brio BW-8040-400-HR	10,500	7.3 GPM	113°F (45°C)	600	99.7%
XLE-440	DuPont™ FilmTec™ XLE-440	14,000	9.7 GPM	113°F (45°C)	600	99%

*Production and quality of reverse osmosis-purified water produced is dependent upon inlet water quality, water temperature, quality of water pre-treatment, consumption rate, operating conditions, and the manufacturer's membrane specifications.



FOR REVERSE OSMOSIS SYSTEMS

BRIO POST CARBON FILTER

KEY FEATURES:

- Improves taste and odor of purified water
- Contains high-quality coconut shell carbon
- Food-grade plastic housing manufactured in the E.U.

SPECIFICATIONS:

Item No.	Product	Pieces in Box	Boxes on Pallet	Pieces on Pallet
RFIL2010GAC	Brio Post Carbon Filter 2" x 10"	30	54	1,620



FOR REVERSE OSMOSIS SYSTEMS

BRIO MINERALIZING FILTER

KEY FEATURES:

- Enriches water with calcium, improves taste and odor, corrects pH
- Contains blend of calcite and coconut shell carbon
- Food-grade plastic housing manufactured in the E.U.

SPECIFICATIONS:

Item No.	Product	Pieces in Box	Boxes on Pallet	Pieces on Pallet
RFIL2010MIN	Brio Mineralizing Filter 2" x 10"	30	54	1,620

IN-LINE CARTRIDGES



SILPP1014



SILGAC1014

Item No.	SILGAC1014	SILGAC1214
Type	GAC	GAC
Size	2" x 10"	2.5" x 11"
Connection	1/4" QC	1/4" FNPT
Box Qty.	50 PCS.	50 PCS.

Item No.	SILPP1014	SILPP12141	SILPP12145
Type	Sediment	Sediment	Sediment
Size	2" x 10"	2.5" x 11"	2.5" x 11"
Micron	5 Micron	1 Micron	5 Micron
Connection	1/4" QC	1/4" FNPT	1/4" FNPT
Box Qty.	50 PCS.	50 PCS.	50 PCS.

BRIO GAC FILTERS

The Brio GAC Granular Activated Carbon Filter effectively reduces unwanted tastes and odors, including chlorine, from your drinking water. It is designed to allow maximum contact between the water and carbon, ensuring maximum adsorption.



BRIO GAC FILTER - 4.5" x 20"

Item No.	Pieces in Box	Pieces on Pallet
RFCT4520GAC	6	162



BRIO GAC FILTER - 2.5" x 10"

Item No.	Pieces in Box	Pieces on Pallet
RFCT2510GAC	15	810

BRIO PP SEDIMENT FILTERS

The Brio PP (polypropylene) Sediment Filter traps sediment and other particles such as dirt, silt, dust, and rust which can affect the taste and appearance of your water.



Dirt



Dust



Rust

40° TO 100° F / FILTER LIFE: 6 MONTHS*



BRIO SEDIMENT FILTER - 2.5" x 10"

Item No.	Filtration Rating	Pieces in Box	Pieces on Pallet
RFCT25101PP	1 Micron	48	1,728
RFCT25105PP	5 Micron		
RFCT251010PP	10 Micron		
RFCT251020PP	20 Micron		



BRIO SEDIMENT FILTER - 4.5" x 10"

Item No.	Filtration Rating	Pieces in Box	Pieces on Pallet
RFCT45101PP	1 Micron	12	432
RFCT45105PP	5 Micron		
RFCT451010PP	10 Micron		
RFCT451020PP	20 Micron		



BRIO SEDIMENT FILTER - 2.5" x 20"

Item No.	Filtration Rating	Pieces in Box	Pieces on Pallet
RFCT25201PP	1 Micron	24	864
RFCT25205PP	5 Micron		
RFCT252010PP	10 Micron		
RFCT252020PP	20 Micron		



BRIO SEDIMENT FILTER - 4.5" x 20"

Item No.	Filtration Rating	Pieces in Box	Pieces on Pallet
RFCT45201PP	1 Micron	6	216
RFCT45205PP	5 Micron		
RFCT452010PP	10 Micron		
RFCT452020PP	20 Micron		

BRIO CTO FILTERS

The Brio CTO Carbon Block Filter is made with coconut shell, which creates a uniform pore structure and larger contact surface area for water. Improves color, taste, and odor of water.



BRIO CTO FILTER - 4.5" x 10"

Item No.	Filtration Rating	Pieces in Box	Pieces on Pallet
RFCT45105CTO	5 Micron	12	324
RFCT451010CTO	10 Micron		
RFCT451020CTO	20 Micron		



BRIO CTO FILTER - 2.5" x 10"

Item No.	Filtration Rating	Pieces in Box	Pieces on Pallet
RFCT25105CTO	5 Micron	15	810
RFCT251010CTO	10 Micron		
RFCT251020CTO	20 Micron		



BRIO CTO FILTER - 4.5" x 20"

Item No.	Filtration Rating	Pieces in Box	Pieces on Pallet
RFCT45205CTO	5 Micron	6	162
RFCT452010CTO	10 Micron		
RFCT452020CTO	20 Micron		

Note: The flow rate and capacity may vary depending on the water quality, water pressure, and the operating condition of the filtration system.

STAINLESS STEEL BLADDER TANKS



1/4 NPT STAINLESS
STEEL THREAD
BOX QTY.: 1

Stainless steel bladder tanks are perfect for locations with low water pressure. They are quality built and created to store and protect large volumes ensuring pure water is always available.



Item No.	ATK40MW	ATK28MW	ATK20MW	ATK14MW	ATK9MW
Volume	40 Gal.	28 Gal.	20 Gal.	14 Gal.	9 Gal.
Diameter x H	22" x 38"	16" x 32"	20" x 29"	16" x 21"	13" x 17"



Item No.	ATK5MW	ATK4MW	ATK32MW	ATK2MW	ATK1MW	ATK050MW
Volume	5 Gal.	4 Gal.	3.2 Gal.	2 Gal.	1 Gal.	1/2 Gal.
Diameter x H	11" x 16"	15" x 22"	9" x 14"	8" x 11.5"	6.5" x 9.75"	5" x 7.75"



ATMOSPHERIC TANKS

Atmospheric tanks are used in a variety of water applications. They are made with rotationally molded polyethylene resin and feature durable seamless construction that is resistant to cracks, chips, and ruptures. Available in white, black, and multiple sizes.

SPECIFICATIONS: WHITE TANKS

Item No.	Capacity	Dimensions
RPV050WHT	50 Gallon	32" Dia. x 25" H
RPV100WHT	100 Gallon	23" Dia. x 64" H
RPV125WHT	125 Gallon	31" Dia. x 47" H
RPV200WHT	200 Gallon	31" Dia. x 73" H
RPV300WHT	300 Gallon	33" Dia. x 80" H

SPECIFICATIONS: BLACK TANKS

Item No.	Capacity	Dimensions
RPV050BLK	50 Gallon	32" Dia. x 25" H
RPV100BLK	100 Gallon	23" Dia. x 64" H
RPV125WHT	125 Gallon	31" Dia. x 47" H
RPV200WHT	200 Gallon	31" Dia. x 73" H
RPV300WHT	300 Gallon	33" Dia. x 80" H



FAUCETS

Brio replacements faucets are sleek, modern, and designed to elevate any décor. Available in several finishes to match existing fixtures.

MIN ORDER QTY.: 5 PCS. QTY. / CASE: 30 PCS.



Item No.	Description
FLR-878CP	Chrome Plated
FLR-878BN	Brushed Nickel



Item No.	Description
FLR-575CP	Chrome Plated
FLR-575BN	Brushed Nickel
FLR-522PSBB	Black
FLR-522PSORB	Oil Rubbed Bronze
FLR-522PSBG	Bright Gold



Item No.	Description
FLR-868PSBN	Brushed Nickel
FLR-868PSORB	Oil Rubbed Bronze
FLR-868PSAB	Antique Brass



ESSENTIAL™
FILTER SERIES



SIGNATURE™
FILTER SERIES



SIGNATURE™
FILTER SERIES



LEGACY™
FILTER SERIES



LEGACY™
FILTER SERIES

Item No.	CSVTFS	CSVTFCWSST	CSVTFCWSL	CLVTFLRCWT	CLVTFLRBBC
Spout	10"	10"	12"	10"	16"
Shank	1"	2"	2"	2"	2"

FILTER ACCESSORIES

FILTER HOUSING



AH2510C14	AH2510C34	AH2510C12
2.5" x 10"	2.5" x 10"	2.5" x 10"
1/4" Thread	3/4" Thread	1/2" Thread



AH2510WF14	AH2510W34	AH2510W12	AH2510W14
2.5" x 10"	2.5" x 10"	2.5" x 10"	2.5" x 10"
1/4" Thread	3/4" Thread	1/2" Thread	1/4" Thread

MEMBRANE HOUSING



MH21214T
2" x 12"
1/4" Thread



MEMBRANE VESSEL



PRO4-300-EP-1
4.5" x 44.25"

BIG BLUE COMMERCIAL FILTER HOUSING



AHBB251034	AHBB252034	AHBB45101	AHBB45201
2.5" x 10"	2.5" x 20"	4.5" x 10"	4.5" x 20"
3/4" Thread	3/4" Thread	1" Thread	1" Thread

FILTER HOUSING



GACH2510	GACH2510C	GACH4510	GACH4520
2.5" x 10"	2.5" x 20"	4.5" x 10"	4.5" x 20"
3/4" Thread	3/4" Thread	1" Thread	1" Thread

FILTER ACCESSORIES

TDS / TEMPERATURE METER



HM 1-9990
TDS & Temp. Meter w/ C
TDS-3



HM PH80
TDS PH/Temp. Meter Test
TDSPH

SOFTENER SALT



40 lb. Water
Softener Salt Pellet
MS100

POLYETHYLENE TUBING



Length	Tube Diam.	Weight	Dimensions	Box Qty.
1,000 ft.	1/4"	11.5 lb	17.5" x 17.5" x 5"	1 pc.

HOUSING BRACKETS



For 3-Stage Quick
Connect Housing
AMBUQ35S



For 2-Stage
Drop-in Housing
AMBU3SW



For 1-Stage Quick
Connect Housing
AMB1SW



For 2-Stage
Drop-in Housing
AMB2SW



For 2-Stage Quick
Connect Housing
AMBQ2SW



For 3-Stage
Drop-in Housing
APB3SW



For 3000 Stand-up
Model Water Cooler
AIB3000S



For 3000 Countertop
Model Water Cooler
AIB3000C

FILTRATION ACCESSORIES

FILTER CLIPS



BC2525MMF

Part No.	A	B
BC252MCF	2.5"	2"
BC2525MMF	2.5"	2.5"
BC22CCF	2"	2"



CL255MCW

Part No.	A
CL251FMC	2"
CL255MLW	2.5"

BRIO HOUSING WRENCH



AHW10
For Standard Residential Housing



AHW20
For Big Blue Housing



AHWIOCH
For Standard Residential Housing

FEEDWATER ADAPTER



Part No.	A	B	C	Bag	Box
				Qty.	Qty.
QCBV383838	3/8"	3/8"	3/8"	25	100
QCBV141212	1/4"	1/2"	1/2"	25	100
QCBV143838	1/4"	3/8"	3/8"	25	100

PRESSURE REGULATOR



Part No.	Tube	Bag	Box
	Od	Qty.	Qty.
FMP70PSI-T	1/4"	10	100

JOHN GUEST ASVPP5LF ANGLE STOP ADAPTER VALVE



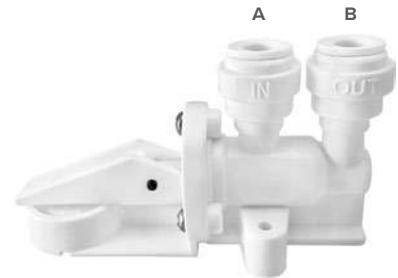
Part No.	A	B	C
ASVPP5LF	3/8"	1/2"	1/4"

TANK VALVE



Part No.	A	B
TANK VALVE 0404	1/2"	1/4"

LEAK STOP VALVE



Part No.	A	B	Box
			Qty.
QCLDET1414	1/4"	1/4"	12
QCLDET3838	3/8"	3/8"	12

QUICK CHANGE VALVES

DISPENSING ELBOW VALVE



Part No.	A	B	Bag Qty.	Box Qty.
QCSAC1410	1/4"	10mm	25	100

SWIVEL ELBOW



Part No.	A	B	Bag Qty.	Box Qty.
QCLA1414	1/4"	1/4"	25	100

MALE STRAIGHT VALVE



Part No.	A	B	Bag Qty.	Box Qty.
QCHVWT1414	1/4"	1/4"	10	100

PLUG IN ELBOW



Part No.	A	B	Bag Qty.	Box Qty.
QCSPEIEA388	3/8"	8mm	10	100

TWO WAY SPLITTER W/ VALVE



Part No.	A	B	C	Bag Qty.	Box Qty.
QCTWSV	1/2"	1/4"	1/2"	10	100

PLUG-IN ADAPTER



Part No.	A	B	Bag Qty.	Box Qty.
QCPAC1410	1/4"	10mm	25	100

LOW PRESSURE VALVE



Part No.	Tube Od	Bag Qty.	Box Qty.
QCLPV14	1/4"	10	100

HIGH PRESSURE VALVE



Part No.	Tube Od	Bag Qty.	Box Qty.
QCHPV14	1/4"	10	100

FLOW REGULATING VALVE



Part No.	A	B	Bag Qty.	Box Qty.
QCFRV1414	1/4"	1/4"	25	100

SHUT OFF VALVE



Part No.	Tube Od	Bag Qty.	Box Qty.
QCSOV1443	1/4"	10	100

DRAIN CLAMP



Part No.	Tube Od	Bag Qty.	Box Qty.
QCDV14	1/4"	10	100

BULK HEAD ADAPTER



Part No.	A	B	Bag Qty.	Box Qty.
QCBU14141414	1/4"	1/4"	10	100

ONE WAY CHECK VALVE



Part No.	A	B	Bag Qty.	Box Qty.
QCCVAS1414	1/4"	1/4"	10	100

FAUCET CONNECTOR



Part No.	A	B	Bag Qty.	Box Qty.
QCMFA1412	1/4"	1/2"	25	100

TUBE CUTTER



Part No.	Bag Qty.	Box Qty.
QCPCT12	10	100

QUICK CHANGE VALVES

FIXED ELBOW



Part No.	A	B	Bag Qty.	Box Qty.
QCME1414	1/4"	1/4"	25	100
QCME1438	1/4"	3/8"	25	100
QCME1412	1/4"	1/2"	25	100
QCME1418	1/4"	1/8"	25	100
QCME3838	3/8"	3/8"	25	100
QCME3814	3/8"	1/4"	25	100
QCME3812	3/8"	1/2"	25	100
QCME3818	3/8"	1/8"	25	100

SWIVEL MALE RUN TEE



Part No.	A	B	C	Bag Qty.	Box Qty.
QCMT2141414	1/4"	1/4"	1/4"	25	100
QCMT2141438	1/4"	1/4"	3/8"	25	100
QCMT2143814	1/4"	3/8"	1/4"	25	100
QCMT2143838	1/4"	3/8"	3/8"	25	100
QCMT2381438	3/8"	1/4"	3/8"	25	100
QCMT2381414	3/8"	1/4"	1/4"	25	100
QCMT2383814	3/8"	3/8"	1/4"	25	100
QCMT2383838	3/8"	3/8"	3/8"	25	100

STEM PLUG ELBOW TEE



Part No.	A	B	C	Bag Qty.	Box Qty.
QCSPET141414	1/4"	1/4"	1/4"	25	100
QCSPET141438	1/4"	1/4"	3/8"	25	100
QCSPET143814	1/4"	3/8"	1/4"	25	100
QCSPET143838	1/4"	3/8"	3/8"	25	100
QCSPET381438	3/8"	1/4"	3/8"	25	100
QCSPET383838	3/8"	3/8"	3/8"	25	100
QCSPET381414	3/8"	1/4"	1/4"	25	100
QCSPET383814	3/8"	3/8"	1/4"	25	100

FEMALE ADAPTER



Part No.	A	B	Bag Qty.	Box Qty.
QCFA1414	1/4"	1/4"	25	100
QCFA3814	3/8"	1/4"	25	100
QCFA3838	3/8"	3/8"	25	100
QCFA1418	1/4"	1/8"	25	100
QCFA14716	1/4"	7/16"	25	100
QCFA3812	3/8"	1/2"	25	100
QCFA3834	3/8"	3/4"	25	100
QCFA1434	1/4"	3/4"	25	100

UNION



Part No.	A	B	Bag Qty.	Box Qty.
QCMSA1414	1/4"	1/4"	25	100
QCMSA1418	1/4"	1/8"	25	100
QCMSA1438	1/4"	3/8"	25	100
QCMSA3838	3/8"	3/8"	25	100
QCMSA3814	3/8"	1/4"	25	100
QCMSA1412	1/4"	1/2"	25	100
QCMSA3812	3/8"	1/2"	25	100

STEM PLUG TEE



Part No.	A	B	C	Bag Qty.	Box Qty.
QCSPT141414	1/4"	1/4"	1/4"	25	100
QCSPT141438	1/4"	1/4"	3/8"	25	100
QCSPT143814	1/4"	3/8"	1/4"	25	100
QCSPT143838	1/4"	3/8"	3/8"	25	100
QCSPT381438	3/8"	1/4"	3/8"	25	100
QCSPT383838	3/8"	3/8"	3/8"	25	100

UNION TEE



Part No.	A	B	C	Bag Qty.	Box Qty.
QCMT3141414	1/4"	1/4"	1/4"	25	100
QCMT3141438	1/4"	1/4"	3/8"	25	100
QCMT3143814	1/4"	3/8"	1/4"	25	100
QCMT3143838	1/4"	3/8"	3/8"	25	100
QCMT3381438	3/8"	1/4"	3/8"	25	100
QCMT3383838	3/8"	3/8"	3/8"	25	100

FIXED TEE ADAPTER



Part No.	A	B	C	Bag Qty.	Box Qty.
QCMT141414	1/4"	1/4"	1/4"	25	100
QCMT141438	1/4"	1/4"	3/8"	25	100
QCMT143814	1/4"	3/8"	1/4"	25	100
QCMT143838	1/4"	3/8"	3/8"	25	100
QCMT381438	3/8"	1/4"	3/8"	25	100
QCMT383838	3/8"	3/8"	3/8"	25	100

The PPM Range of metric size push-in fittings is offered for our tube sizes 8mm O.D. to 15mm O.D. The fittings are manufactured in white polypropylene with EPDM O-rings. They have been developed to satisfy the compatibility needs for a wide range of applications.

The PPM Range is NOT suitable for compressed air applications. For these situations we recommend the PM Range.

WORKING PRESSURES AND TEMPERATURES

WATER	MAX. 150 PSI AT 70°F (MAX 10 BAR AT 20°C)
	MAX. 60 PSI AT 140°F (MAX 4 BAR AT 60°C)
	MIN. 33°F / 1°C

QUICK CHANGE VALVES

DIVIDER



Part No.	A	B	C	Bag Qty.	Box Qty.
QCTWS141414	1/4"	1/4"	1/4"	25	100
QCTWS383838	3/8"	3/8"	3/8"	25	100
QCTWS141438	1/4"	1/4"	3/8"	25	100
QCTWS143838	1/4"	3/8"	3/8"	25	100
QCTWS383814	3/8"	3/8"	1/4"	25	100

FIXED ELBOW CHECK VALVE



Part No.	A	B	Bag Qty.	Box Qty.
QCCVA1414	1/4"	1/4"	25	100
QCCVA1418	1/4"	1/8"	25	100

PLUG-IN ELBOW



Part No.	A	B	Bag Qty.	Box Qty.
QCFEA1414	1/4"	1/4"	25	100
QCFEA1418	1/4"	1/8"	25	100

UNION FITTING



Part No.	A	B	Bag Qty.	Box Qty.
QCTO1414	1/4"	1/4"	25	100
QCTO1438	1/4"	3/8"	25	100
QCTO3838	3/8"	3/8"	25	100

PLUGS



Part No.	Color	Tube O.D.	Bag Qty.	Box Qty.
QCS14	Clear	1/4"	10	100
QCS38	Clear	3/8"	10	100
QCS12	Clear	1/2"	10	100

LOCKING CLIP



Part No.	Color	Tube O.D.	Bag Qty.	Box Qty.
QCF14	Blue	1/4"	10	100
QCF38	Blue	3/8"	10	100

REDUCING BULKHEAD UNION



Part No.	A	B	Bag Qty.	Box Qty.
QCBU1414	1/4"	1/4"	25	100
QCBU1438	1/4"	3/8"	25	100
QCBU3838	3/8"	3/8"	25	100

UNION ELBOW



Part No.	A	B	Bag Qty.	Box Qty.
QCTW1414	1/4"	1/4"	25	100
QCTW1438	1/4"	3/8"	25	100
QCTW3838	3/8"	3/8"	25	100

STRAIGHT OD TUBE VALVE



Part No.	A	B	Bag Qty.	Box Qty.
QCHV1414	1/4"	1/4"	25	100
QCHV3814	3/8"	1/4"	25	100
QCHV3838	3/8"	3/8"	25	100

QUICK ADAPTER



Part No.	Color	Tube O.D.	Bag Qty.	Box Qty.
QCQAW14	White	1/4"	50	500
QCQAW38	White	3/8"	50	500
QCQAW12	White	1/2"	50	500
QCQAB14	Blue	1/4"	50	500
QCQAB38	Blue	3/8"	50	500
QCQAB12	Blue	1/2"	50	500

FLOW RESTRICTOR



Part No.	Tube O.D.	ml / min	Bag Qty.	Box Qty.
QCFR14300	1/4"	300	10	100
QCFR14350	1/4"	350	10	100
QCFR14400	1/4"	400	10	100
QCFR14420	1/4"	420	10	100
QCFR14550	1/4"	550	10	100

PLUG-IN ELBOW



Part No.	A	B	Bag Qty.	Box Qty.
QCSPE1414	1/4"	1/4"	25	100
QCSPE1438	1/4"	3/8"	25	100
QCSPE3814	3/8"	1/4"	25	100
QCSPE3838	3/8"	3/8"	25	100

**WATER BOTTLES,
CROCKS &
ACCESSORIES**



Water Bottles

Durable water bottles, stylish on-the-go sports bottles, convenient dispensers, and more—choose from the industry-leading collection of containers.



Crocks & Stands

Water-dispensing crocks from GEO are a simple and efficient hydration solution. Perfect for any setting, they're constructed with premium materials to protect water purity.

Accessories

High-quality valves, sturdy bottle stands, and durable leak-proof caps—the wide range of water accessories ensure that all your hydration needs will be met.



5 GALLON BPA-FREE BOTTLES



Item No.	BT505ET / BT507ET	BT506ET	BT555BAYL	BT555PVC	BJ555BADB
Cap Size	53mm Screw / 55mm Crown	55mm Crown Top	120mm Cap	165mm Cap	165mm Cap
Bottle Size	10.75" Dia. x 19.5" H	10.75" Dia. x 19.5" H	10.75" Dia. x 19.5" H	10.75" Dia. x 19.5" H	10.75" Dia. x 19.5" H
Box Qty.	5 Pcs.	5 Pcs.	32 Pcs.	4 Pcs.	4 Pcs.
Pallet Qty.	90 Pcs.	90 Pcs.	80 Pcs.	80 Pcs.	80 Pcs.
Container Qty.	24 Pallets / 2,400 Pcs.	24 Pallets / 2,400 Pcs.	1,920 Pcs.	1,920 Pcs.	1,920 Pcs.

2 & 3 GALLON BPA-FREE BOTTLES



Item No.	BT205ET / BT207ET	BT305ET / BT307ET	BT355PVC	BT3GET / BT4GET
Cap Size	53mm Screw / 55mm Crown	53mm Screw / 55mm Crown	133mm Cap	55mm Crown Top
Bottle Size	7.5" Dia. x 15" H	9.75" Dia. x 17.5" H	9.75" Dia. x 17.5" H	8.6" Dia. x 19.3" H
Box Qty.	12 Pcs.	8 Pcs.	4 Pcs.	8 Pcs. / 6 Pcs.
Pallet Qty.	140 Pcs.	140 Pcs.	100 Pcs.	120 Pcs.
Container Qty.	24 Pallets / 3,360 Pcs.	24 Pallets / 3,360 Pcs.	2,400 Pcs.	24 Pallets / 2,880 Pcs.

5 GALLON POLYCARBONATE BOTTLES



Item No.	BT530PC / BT530PCV	BT510PC	BT511PC
Cap Size	48mm Screw Cap	48mm Screw Cap	55mm Crown Top
Bottle Size	10.75" Dia. x 19.5" H	10.75" Dia. x 19.5" H	10.75" Dia. x 19.5" H
Box Qty.	6 Pcs.	5 Pcs.	5 Pcs.
Pallet Qty.	90 Pcs.	90 Pcs.	90 Pcs.
Cont. Qty.	24 Pallets / 2,400 Pcs.	24 Pallets / 2,400 Pcs.	37 Pallets / 3,256 Pcs.



Item No.	BTNH511PC	BT541PC	BT555PC / BT555PCV
Cap Size	55mm Crown Top	55mm Crown Top	120mm Screw Cap
Bottle Size	10.75" Dia. x 19.5" H	10.75" Dia. x 19.5" H	10.75" Dia. x 19.5" H
Box Qty.	5 Pcs.	5 Pcs.	4 Pcs.
Pallet Qty.	90 Pcs.	90 Pcs.	100 Pcs.
Cont. Qty.	36 Pallets / 3,168 Pcs.	36 Pallets / 3,168 Pcs.	24 Pallets / 2,400 Pcs.

3 GALLON POLYCARBONATE BOTTLES



Item No.	BT320PC	BT310PC / BT311PC	BT360PC
Cap Size	48mm Screw Cap	48mm Screw Cap / 55mm Crown Top	48mm Screw Cap
Bottle Size	8.75" Dia. x 19.75" H	10.63" Dia. x 13.75" H	10.63" x 10.63" x 13.75"
Box Qty.	7 Pcs.	8 Pcs.	8 Pcs.
Pallet Qty.	140 Pcs.	160 Pcs.	160 Pcs.
Cont. Qty.	24 Pallets / 3,360 Pcs.	24 Pallets / 3,840 Pcs.	24 Pallets / 3,840 Pcs.

2 & 3 GALLON POLYCARBONATE BOTTLES



Item No.	BT210PC / BT260PC	BT220PC	BTR260PC	BTR360PC
Cap Size	48mm Screw Cap	100mm Screw Cap	100mm Screw Cap	100mm Screw Cap
Bottle Size	8.87" Dia. x 13.5" H	12.25" x 6.5" x 9"	11.25" x 6.5" x 9.5"	15.25" x 6.5" x 9.5"
Box Qty.	12 Pcs.	8 Pcs.	16 Pcs.	8 Pcs.
Pallet Qty.	196 Pcs.	160 Pcs.	280 Pcs.	160 Pcs.
Cont. Qty.	24 Pallets / 4,704 Pcs.	24 Pallets / 3,840 Pcs.	24 Pallets / 6,704 Pcs.	24 Pallets / 3,840 Pcs.

PET & PP WATER BOTTLES



Item No.	BT150ET	BT100ET	BT050ET	BT100BET	BT050BET	BT1GET	BT100M
Cap Size	28mm	28mm	28mm	28mm	28mm	50mm	38mm
Bottle Size	3.5"Dia.x11"H	3"Dia.x9.5"H	2.5"Dia.x8"H	2.75"Dia.x11.75"H	2.7"Dia.x8"H	5"x 5"x12.5"	5.625"x5.625"x10"
Box Qty.	100 Pcs.	100 Pcs.	100 Pcs.	100 Pcs.	100 Pcs.	48 Pcs.	48 Pcs.
Pallet Qty.	1,568 Pcs.	2,340 Pcs.	3,465 Pcs.	2,552 Pcs.	4,788 Pcs.	480 Pcs.	480 Pcs.
Volume	1.5 Liter	1 Liter	½ Liter	1 Liter	½ Liter	1.5 Gallon	1 Gallon

1 GAL. w/ HANDLE

GLASS BOTTLES & CAPS

Item No.	Bottle Size	Cap Size	Pallet Qty.	Volume
BT400MLGG	2" Dia. x 8" H	42mm Screw Cap	600 Pcs.	400 mL
BT750MLGG	2.5" Dia. x 10.5" H	42mm Screw Cap	600 Pcs.	750 mL

● CA400MLBLK	● CA400MLRD	● CA400MLGRY	● CA400MLGRN
● CA400MLPP	● CA400MLPK	○ CA400MLWHT	

Cap Size	Qty. / Case
42mm Screw Cap	12 Pcs. per Bag / 300 Pcs. per Case

● CA750MLBLK	● CA750MLRD	● CA750MLGRY	● CA750MLGRN
● CA750MLPP	● CA750MLPK	○ CA750MLWHT	

Cap Size	Qty. / Case
42mm Screw Cap	12 Pcs. per Bag / 300 Pcs. per Case



GLASS BOTTLES

CLEAR

Item No.	Bottle Size	Cap Size	Pallet Qty.	Volume
BT1GGUS	6.57" Dia. x 11.25" H	38mm Crown Top	336 Pcs.	1 Gallon
BT050GGUS	5" Dia. x 10.3" H	38mm Crown Top	504 Pcs.	1/2 Gallon

AMBER

Item No.	Bottle Size	Cap Size	Pallet Qty.	Volume
BT1GGAM	6.57" Dia. x 11.25" H	38mm Crown Top	336 Pcs.	1 Gallon
BT050GGAM	5" Dia. x 10.3" H	38mm Crown Top	504 Pcs.	1/2 Gallon



GLASS CARBOY BOTTLES

Item No.	Bottle Size	Cap Size	Pallet Qty.	Volume
BT5GG015517	10.5" Dia. x 19.75" H	55mm Crown Top	80 Pcs.	5 Gallon
BT3GG015511	9" Dia. x 16" H	55mm Crown Top	90 Pcs.	3 Gallon



3 & 5 GALLON GLASS WATER DISPENSERS

3 GALLON

● BT350GVB	○ BT350GVW	● BT350GVPP	● BT350GVBLK
------------	------------	-------------	--------------

Cap Size	Bottle Size	Pallet Qty.	Container Qty.
150mm Lid	9.75" Dia. x 14" H	150 Pcs.	24 Pallets / 3,600 Pcs.

5 GALLON

● BT550GLBV	○ BT550GWV	● BT550GPPV	● BT550GBLKV
-------------	------------	-------------	--------------

Cap Size	Bottle Size	Pallet Qty.	Container Qty.
150mm Lid	11" Dia. x 16.75" H	80 Pcs.	24 Pallets / 1,190 Pcs.





64 oz.
POWDER
FINISH

STAINLESS STEEL DOUBLE WALL VACUUM INSULATED WIDE MOUTH BOTTLES

- BTSS64RSS
- BTSS64RLGN
- BTSS64RDB
- BTSS64RPB
- BTSS64RBLK
- BTSS64ROR
- BTSS64RRD
- BTSS64RWHT
- BTSS64RPK

Cap Size	Bottle Size	Box Qty.	Pallet Qty.	Container Qty.
70mm Cap	4.9" Dia. x 10.125" H	10 Pcs.	576 Pcs.	24 Pallets / 13,824 Pcs.



32 oz.
POWDER
FINISH

STAINLESS STEEL DOUBLE WALL VACUUM INSULATED WIDE MOUTH BOTTLES

- BTSS32RSS
- BTSS32RLGN
- BTSS32ROR
- BTSS32RPB
- BTSS32RBLK
- BTSS32RPK
- BTSS32RDB
- BTSS32RWHT

Cap Size	Bottle Size	Box Qty.	Pallet Qty.	Container Qty.
70mm Cap	3.54" Dia. x 9" H	25 Pcs.	1,000 Pcs.	24 Pallets / 24,000 Pcs.



28 oz.
POWDER
FINISH

STAINLESS STEEL DOUBLE WALL VACUUM INSULATED SPORTS BOTTLES WITH TETHERED HANDLE

- BTSS28FLRD
- BTSS28FLDG
- BTSS28FLBLK
- BTSS28FLWHT
- BTSS28FLDB

Cap Size	Bottle Size	Box Qty.	Pallet Qty.	Container Qty.
58mm Cap	3.15" Dia. x 10.87" H	25 Pcs.	1,000 Pcs.	24 Pallets / 24,000 Pcs.



25 oz.
GLOSS
FINISH

STAINLESS STEEL DOUBLE WALL VACUUM INSULATED NARROW MOUTH BOTTLE

- BTSS25SLSS
- BTSS25SLLGN
- BTSS25SLBLK
- BTSS25SLDB
- BTSS25SLPB
- BTSS25SLDG
- BTSS25SLWHT
- BTSS25SLOR
- BTSS25SLRD

Cap Size	Bottle Size	Box Qty.	Pallet Qty.	Container Qty.
38mm Steel Cap	3.14" Dia. x 12.2" H	25 Pcs.	1,000 Pcs.	24 Pallets / 24,000 Pcs.

STAINLESS STEEL BOTTLES

STAINLESS STEEL DOUBLE WALL VACUUM INSULATED TALL SPORTS BOTTLES

- BTSS25RSS
- BTSS25RBLK
- BTSS25RWHT
- BTSS25RPB
- BTSS25RRD

Cap Size	Bottle Size	Box Qty.	Pallet Qty.	Container Qty.
70mm Cap	2.91" Dia. x 10.75" H	25 Pcs.	1,000 Pcs.	24 Pallets / 24,000 Pcs.

25 oz.
POWDER FINISH



STAINLESS STEEL DOUBLE WALL VACUUM INSULATED SLIM BOTTLES WITH HANDLE

- BTSS17SBSS
- BTSS17SBRD
- BTSS17SBBLK
- BTSS17SBGLD
- BTSS17SBLG
- BTSS17SBWHT
- BTSS17SBDB
- BTSS17SBDG
- BTSS17SBOR

Cap Size	Bottle Size	Box Qty.	Pallet Qty.	Container Qty.
47mm Cap	2.56" Dia. x 10.2" H	25 Pcs.	1,000 Pcs.	24 Pallets / 24,000 Pcs.

17 oz.
RUBBER FINISH



STAINLESS STEEL DOUBLE WALL VACUUM INSULATED NARROW MOUTH BOTTLES

POWDER FINISH

- BTSS17SLPOWPB
- BTSS17SLPOWLGN
- BTSS17SLPOWOR
- BTSS17SLPOWRD
- BTSS17SLPOWDG

Cap Size	Bottle Size	Box Qty.	Pallet Qty.	Container Qty.
38mm Steel Cap	2.36" Dia. x 9.84" H	25 Pcs.	1,000 Pcs.	24 Pallets / 24,000 Pcs.

17 oz.
POWDER FINISH



GLOSS FINISH

- BTSS17SLSS
- BTSS17SLRD
- BTSS17SLBLK
- BTSS17SLDB
- BTSS17SLPB
- BTSS17SLLGN
- BTSS17SLWHT
- BTSS17SLOR
- BTSS17SLPK
- BTSS17SLDG

Cap Size	Bottle Size	Box Qty.	Pallet Qty.	Container Qty.
38mm Steel Cap	2.36" Dia. x 9.84" H	25 Pcs.	1,000 Pcs.	24 Pallets / 24,000 Pcs.

17 oz.
GLOSS FINISH





64 oz.
BPA-FREE
BOTTLE

WATER BOTTLES WITH SPORTS CAP

- BT050BANB
- BT050BAPK
- BT050BAPP
- BT050BABLK
- BT050BADB
- BT050BAGN

Cap Size	Bottle Size	Box Qty.	Pallet Qty.	Container Qty.
48mm Steel Cap	5" Dia. X 9.75" H	24 Pcs.	566 Pcs.	24 Pallets / 13,584 Pcs.



64 oz.
BPA-FREE
BOTTLE

WATER BOTTLES W/ STAINLESS STEEL CAP

- BT050SCBANB
- BT050SCBARD
- BT050SCBAPP
- BT050SCBABLK
- BT050SCBADB
- BT050SCBAGN
- BT050SCBAPK

Cap Size	Bottle Size	Box Qty.	Pallet Qty.	Container Qty.
48mm Steel Cap	5" Dia. x 9.75" H	24 Pcs.	566 Pcs.	24 Pallets / 13,584 Pcs.



1 GAL.
BPA-FREE
BOTTLE

WATER BOTTLES W/ STAINLESS STEEL CAP

- BT110SCBADB
- BT110SCBAGN
- BT110SCBAPP
- BT110SCBAPK
- BT110SCBABLK

Cap Size	Bottle Size	Box Qty.	Pallet Qty.	Container Qty.
48mm Steel Cap	6.5" Dia. x 11" H	24 Pcs.	144 Pcs.	28 Pallets / 4,032 Pcs.



1 GAL.
BPA-FREE
BOTTLE

WATER BOTTLES WITH SCREW CAP

- BT110BANB
- BT110BAPK
- BT110BAPP
- BT110BADB
- BT110BAGN
- BT110BABLK

Cap Size	Bottle Size	Box Qty.	Pallet Qty.	Container Qty.
48mm Screw Cap	6.5" Dia. x 11.5" H	24 Pcs.	288 Pcs.	24 Pallets / 6,912 Pcs.



1 GAL.
BPA-FREE
BOTTLE

JUICE/DAIRY WATER BOTTLE JUGS

- BT110JBABLK
- BT110JBAPK
- BT110JBAPP
- BT110JBADB
- BT110JBAGN

Cap Size	Bottle Size	Box Qty.	Pallet Qty.	Container Qty.
48mm Screw Cap	6.25" x 6" x 10.5"	24 Pcs.	288 Pcs.	24 Pallets / 6,912 Pcs.



1 GAL.
BPA-FREE
BOTTLE

SLIM LINE BEVERAGE CONTAINERS

- BT140BABLK
- BT140BADB
- BT140BARD
- BT140BAPP

Cap Size	Bottle Size	Box Qty.	Pallet Qty.	Container Qty.
58mm Screw Cap	13.75" x 2.75" x 8"	8 Pcs.	288 Pcs.	700 Pcs.

PLASTIC WATER BOTTLES

ALL INCLUSIVE PACKAGE

- 1 Exclusive GEO Carrying Bag
- 1 Sports Cap with 2 Straws
- 1 BPA-Free Bottle
- 1 Stainless Steel Lid with Wide Mouth Opening
- 1 Wide Mouth Cap with Handle
- 1 Adjustable Cleaning Brush

1 BOX INCLUDES 8 PIECES



tritan™
from eastman

2.3 LITER BPA-FREE SPORTS BOTTLES

- BR23MCBABLK ● BR23MCBARD ● BR23MCBAPP
- BR23MCBADB ● BR23MCBAGN ● BR23MCBAPK

Cap Size	Bottle Size	Box Qty.	Pallet Qty.	Container Qty.
58mm Screw Cap	5.75" Dia. x 10.75" H	1 Pc.	192 Pcs.	8,400 Pcs.

2.3 L
BPA-FREE BOTTLE



NEW

1/2 GALLON BPA-FREE SPORTS BOTTLES

- BT050MCBABLK ● BT050MCBARD ● BT050MCBAPP
- BT050MCBADB ● BT050MCBAGN ● BT050MCBAPK

Cap Size	Bottle Size	Box Qty.	Pallet Qty.	Container Qty.
58mm Screw Cap	5.125" Dia. x 10.125" H	1 Pc.	192 Pcs.	9,600 Pcs.

1/2 GAL.
BPA-FREE BOTTLE



NEW

1 GALLON BPA-FREE SPORTS BOTTLES

- BT110MCBABLK ● BT110MCBARD ● BT110MCBAPP
- BT110MCBADB ● BT110MCBAGN ● BT110MCBAPK

Cap Size	Bottle Size	Box Qty.	Pallet Qty.	Container Qty.
58mm Screw Cap	6.5" Dia. x 11.5" H	1 Pc.	144 Pcs.	6,900 Pcs.

1 GAL.
BPA-FREE BOTTLE



NEW

All Tritan Bottles Available in:



BLACK



RED



PURPLE



DARK BLUE



GREEN



PINK



SPECKLED BABY BLUE
CKOVISPBBLU

SPECIFICATIONS

Capacity	2.8 Gallons	Weight	7.50 Lb.
Lid Size	155 mm	Pallet Qty.	140 Pcs.
Crock Size	10" Dia. x 9.25" H		

LARGE VARIETY OF FINISHES

Picking the right crock to fit the home or office is easy with GEO Water Cocks. The wide variety of finishes ensure that there is something for everyone, from subtle decorative designs to bold statement pieces. GEO Water Cocks perfectly meld stylish design with safe hydration as each crock is carefully designed to meet and exceed all hydration needs.



SPECKLED GREEN
CKOVISPGRN



SPECKLED BLACK
CKOVISPBLK



SPECKLED GRAY
CKOVISPDGRY



BLACK W/ SPECKLED BLUE
CKOVISHPBLKBL



BLACK W/ SPECKLED ORANGE
CKOVISHPBLKOR



BLACK W/ SPECKLED PINK
CKOVISHPBLKPK



BLACK W/ SPECKLED RED
CKOVISHPBLKRD



BLACK W/ SPECKLED YELLOW
CKOVISHPBLKYL

BRIO WATER TECHNOLOGY



BLACK MARBLE
CKMBLK



MAROON BLEND MARBLE
CKMMARO



BABY BLUE MARBLE
CKMLB



DARK BLUE MARBLE
CKMDB



BLACK AND WHITE
CKOVIABSWHTBLK



WHITE AND GOLD
CKOVIABSWHTGLD



SHINY GOLD
CKSHGLD



SHINY ALMOND
CKSHALM



POLISHED GREEN
CKSHGRN



ANTIQUE WHITE
CKAWHT



POLISHED SILVER
CKSHSLV



POLISHED MAROON
CKSHMRN



POLISHED PINK
CKSHPK



POLISHED DARK GREEN
CKSHDGRN



ROSE GOLD CHROME
CKOVICHWRG



GOLD CHROME
CKOVICHWGLD



SILVER CHROME
CKOVICHWSLV



MATTE GREEN
CKMTGRN

WATER DISPENSING CROCKS



CROCK LID
CKL



CROCK RING
CKR



MATTE GRAY
CKMTBLK



MATTE BLUE
CKMTDB



WHITE
CKOVISWHT



RED
CKOVISRD



BLACK
CKOVISBLK



SOLID BLUE
CKOVISBLU



PINK
CKOVISPK



ORANGE
CKOVISOR



GREEN
CKOVISGRN



SOLID BABY BLUE
CKOVISBBLU



GRADIENT BABY BLUE
CKHFLB



GRADIENT ORANGE
CKHFOR



GRADIENT PINK
CKHFPK



GRADIENT RED
CKHFRD



GRADIENT GREEN
CKHFGRN



GREEN STRIPE
CKOVIGRNS



BLACK STRIPE
CKOVIBLKS



BLUE STRIPE
CKOVIBLUS



SOLID BLACK
CKSBLK



SOLID BLUE
CKSBLU



SOLID GREEN
CKSGRN



SOLID BABY BLUE
CKSBBLU



SOLID RED
CKSRD



SOLID PINK
CKSPK



WHITE GRAPE BAND
CKEWGB258



EMBOSSED GRAPE
CKEWG259



GREEN STRIPE
CKGRNS



BLACK STRIPE
CKBLKS



BLUE STRIPE
CKBLUS



SOLID WHITE
CKSWHT



CURVED SUNFLOWER
CKSF288

SUNFLOWER
CKSF55

DECAL CROCKS

Make a bold statement with GEO Decal Crocks. Available in a wide array of eye-catching images and themes, including floral, nature and fruit, GEO Decal Crocks are attractive, durable, and protect your purified water. Plus, they make dispensing easy.

SPECIFICATIONS

Capacity	2.8 Gallons	Weight	7.5 lb.
Lid Size	155 mm	Pallet Qty.	140 Pcs.
Crock Size	10" Dia. x 9.25" H		



MAGNOLIA
CKM228



PROPEL PANSIES
CKPP246



YELLOW DAISY
CKYD250



WHITE DAISY
CKWD204



PINK FORGET-ME-NOT
CKPF213



BLUE FORGET-ME-NOT
CKBF236



SUMMER FLOWERS
CKSF211



MAUVE ROSES
CKMR247



FLORAL HUMMINGBIRD
CKFHB289



FLORAL ANGELS
CKFA261



PHAR GOLD
CKPG266



GRAPES
CKG239



GRAPES & GRAPE LEAVES
CKGL304



TROPICAL FRUITS
CKTF227



RED APPLES
CKRA208



CHILI PEPPERS BAND
CKCPB224



PALM TREE
CKPT38



DESERT PLANTS
CKC251



IVY
CKI223



ROOSTER & HEN
CKRH66



FAMILY DUCKS
CKFD269



HORSES
CKH85



EAGLE
CKE210



TROPICAL FISH
CKTF202



LIGHT COLORED DOLPHINS
CKLCD293



BLUE DOLPHINS
CKBD237



AUTUMN JARS
CKAJ264



SINGING ANGELS
CKSA226



COTTAGE HOUSE
CKCH267



CROCK & STAND COMBOS PERFECTLY PACKAGED

Packaged to ensure the safest delivery possible, GEO carefully encases each crock before sending it on its way. Layers of protection allow for the safest possible delivery to ensure an intact crock. Perfectly paired stands and crocks feature stylish designs and vibrant colors. Designed not just for style but also for durability, each crock is created with premium materials to ensure they withstand daily use.

SPECIFICATIONS

Capacity	2.8 Gallons	Weight	7.5 Lb.
Lid Size	155 mm	Pallet Qty.	140 Pcs.
Crock Size	10" Dia. x 9.25" H		



WHITE CROCK WITH BLUE STRIPE
CKOVIWSSBLUS



SOLID WHITE DESIGN
CKOVIWSSWHT



SOLID BLACK DESIGN
CKOVIWSSBLK



SOLID BLUE DESIGN
CKOVIWSSBLU

WOOD COUNTERTOP STANDS

- STW8N
- STW8C
- STW8BLU
- STW8W
- STW8DN
- STW8GRN
- STW8BLK

Box Qty.	Pallet Qty.	Container Qty.	Dimensions
10 Pcs.	480 Pcs.	11,520 Pcs.	11.5" H x 11.5" W x 5" L

8" H

WOOD
COUNTERTOP
STANDS



METAL & WOOD COUNTERTOP STANDS

- STM8BLK
- STM8W
- STM8GRN
- STMW8BLK
- STMW8W
- STMW8GRN

Box Qty.	Pallet Qty.	Container Qty.	Dimensions
10 Pcs.	480 Pcs.	11,520 Pcs.	8" H x 10" W x 10" L

8" H

METAL & WOOD
COUNTERTOP
STANDS



NATURAL WOOD STANDS

- STW27N
- STW27C
- STW27BLU
- STW27W
- STW27DN
- STW27GRN
- STW27BLK

Box Qty.	Pallet Qty.	Container Qty.	Dimensions
5 Pcs.	220 Pcs.	6,000 Pcs.	27" H x 14" W x 14" L

27" H

NATURAL WOOD
STANDS



NATURAL WOOD STANDS

- STW30N
- STW30C
- STW30BLU
- STW30W
- STW30DN
- STW30GRN
- STW30BLK

Box Qty.	Pallet Qty.	Container Qty.	Dimensions
5 Pcs.	220 Pcs.	5,280 Pcs.	30" H x 14" W x 14" L

30" H

NATURAL WOOD
STANDS



METAL & WOOD STANDS

- STM32BLK
- STM32W
- STM32GRN
- STMW32BLK
- STMW32W
- STMW32GRN

Box Qty.	Pallet Qty.	Container Qty.	Dimensions
10 Pcs.	140 Pcs.	3,360 Pcs.	32" H x 14" W x 17" L

32" H

METAL & WOOD
STANDS





METAL WATER BOTTLE STANDS



STM10BTGRY



STM8BTGRY



STM8BTWHT



STM6BTGRY



STM6BTWHT

DOUBLE COLUMN STANDS:

Item No.	Color	Box Qty.	Pallet Qty.
STM6BTGRY / STM6BTWHT	Gray / White	1 Pcs.	100 Pcs.
STM8BTGRY / STM8BTWHT	Gray / White	1 Pcs.	86 Pcs.
STM10BTGRY	Gray	1 Pcs.	100 Pcs.



STM5BTGRY



STM5BTWHT



STM4BTGRY



STM4BTWHT



STM3BTWHT



STM2BTSHGRY



STM2BTGRY



STM2BTWHT

SINGLE COLUMN STANDS:

Item No.	Color	Box Qty.	Pallet Qty.
STM2BTSHGRY / STM2BTSHWHT	Gray / White	1 Pcs.	200 Pcs.
STM2BTGRY / STM2BTWHT	Gray / White	1 Pcs.	200 Pcs.
STM3BTGRY / STM3BTWHT	Gray / White	1 Pcs.	200 Pcs.
STM4BTGRY / STM4BTWHT	Gray / White	1 Pcs.	120 Pcs.
STM5BTGRY / STM5BTWHT	Gray / White	1 Pcs.	100 Pcs.

STAINLESS STEEL 3-5 GALLON WATER JUG STANDS

Featuring a conveniently high dispense point, this durable stainless steel stand provides reliable bottle stability in a sturdy, space-saving design.



STMB4855A



STM4855A

METAL PLATED 3-5 GALLON WATER JUG STANDS

Perfect for higher counters where a low dispense point is desired, this tough metal-plated stand makes water dispensing easy.



STMB4855W



STM4855W

FOLDABLE WATER BOTTLE COUNTERTOP DISPENSER STORAGE STAND

With a conveniently high dispense point and storable foldable design, this rugged metal stand is perfect for indoor, outdoor, or on-the-road environments.



STM4855B



48MM VALVE BLACK

55MM VALVE BLACK



48MM VALVE WHITE

55MM VALVE WHITE

KEY FEATURES

- Made of premium stainless steel to ensure durability
- Holds either 3 or 5 gallon bottles
- 2 Valves included, measuring 48mm and 55mm

Item No.	Color	Box Qty.	Pallet Qty.	Container Qty.	Valve Cap Included
STM4855W	Chrome	10 Pcs.	800 Pcs.	20,520 Pcs.	55mm Crown / White 48mm Screw / White
STMB4855W	Black	10 Pcs.	800 Pcs.	20,520 Pcs.	55mm Crown / Black 48mm Screw / Black
STM4855A	White	12 Pcs.	840 Pcs.	11,520 Pcs.	55mm Crown / White 48mm Screw / White
STMB4855A	Black	12 Pcs.	840 Pcs.	11,520 Pcs.	55mm Crown / Black 48mm Screw / Black
STM4855B	Black	12 Pcs.	288 Pcs.	11,520 Pcs.	55mm Crown / Black 48mm Screw / Black



WATER DISPENSER VALVE CAPS 48MM / 55MM

○ FTCA48WHTDP1 ● FTCA48BLKDP1 ● FTCA48DBDP1

Cap Size	Min. Order Qty.	Qty. / Case
48mm Screw Cap	100 Pcs.	1,200 Pcs.

○ FTCA55WHTDP1 ● FTCA55BLKDP1 ● FTCA55DBDP1

Cap Size	Min. Order Qty.	Qty. / Case
55mm Crown Cap	100 Pcs.	1,200 Pcs.



WATER DISPENSER VALVE CAP 48MM & 55MM PACKS

○ FTCA4855WHTDP2 ● FTCA4855BLKDP2 ● FTCA4855DBDP2

Cap Size	Min. Order Qty.	Qty. / Case
48mm Screw Cap / 55mm Crown Cap	100 Pcs.	1,200 Pcs.



REPLACEMENT VALVE DISPLAY PACKAGES

Thread Size	Min. Order Qty.	Qty. / Case	Qty. / Pallet
1" x 3/4" Dia. Male	25 Pcs.	250 Pcs.	18,500 Pcs.

Pack Qty.	1 Pack	2 Pack	4 Pack	6 Pack	12 Pack	24 Pack
● Silver	FT1000DP1	FT1000DP2	FT1000DP4	FT1000DP6	FT1000DP12	FT1000DP24
○ White	FT110DP1	FT110DP2	FT110DP4	FT110DP6	FT110DP12	FT110DP24
● Black	FT140DP1	FT140DP2	FT140DP4	FT140DP6	FT140DP12	FT140DP24
● Red	FT191DP1	FT191DP2	FT191DP4	FT191DP6	FT191DP12	FT191DP24
● D. Blue	FT130DP1	FT130DP2	FT130DP4	FT130DP6	FT130DP12	FT130DP24
● L. Blue	FT170DP1	FT170DP2	FT170DP4	FT170DP6	FT170DP12	FT170DP24
● Yellow	FT190DP1	FT190DP2	FT190DP4	FT190DP6	FT190DP12	FT190DP24
● Green	FT180DP1	FT180DP2	FT180DP4	FT180DP6	FT180DP12	FT180DP24
● Pink	FT160DP1	FT160DP2	FT160DP4	FT160DP6	FT160DP12	FT160DP24

WATER PUMP DISPENSERS

● PU100
 ● PU100LG
 ● PU100OR
 ● PU100RBLK
 ● PU100GBLK

Box Qty.	Pallet Qty.	Truck Load Qty.	Dimensions
24 Pcs.	576 Pcs.	13,824 Pcs.	27" H x 14" W x 14" L



WATER PUMP DISPENSERS

Item No.	Fixture Size	Case Qty.	Pallet Qty.
PU100WH	55mm	24 Pcs.	360 Pcs
PU200	55mm	24 Pcs.	450 Pcs.



PU100WH



ELECTRIC PUMP

PU200

BOTTLENECK HANDLE DISPLAY PACKAGES

● BHN500TDP1
 ● BHN500DP1

Min. Order Qty.	Qty. / Case	Qty. / Pallet
25 Pcs.	250 Pcs.	18,500 Pcs.



NO-SPLASH CAP DISPLAY PACKAGES

Item No.	CA48EZ	CA55EZ
Size	48mm	55mm
Min. Order Qty.	Qty. / Case	Qty. / Pallet
25 Pcs.	250 Pcs.	18,500 Pcs.



CUP HOLDERS

○ CD100
 ● CD200
 ● CD300

Qty. / Case	Qty. / Pallet
24 Pcs.	576 Pcs.



REPLACEMENT VALVES



● FTS130

Thread Size	Min. Order Qty.	Qty. / Case	Qty. / Pallet
M21 x 2	25 Pcs.	250 Pcs.	18,500 Pcs.

● FTW111

Thread Size	Min. Order Qty.	Qty. / Case	Qty. / Pallet
M16 x 2	25 Pcs.	250 Pcs.	18,500 Pcs.



○ FTPS100 ○ FTPS101

Thread Size	Min. Order Qty.	Qty. / Case	Qty. / Pallet
M18 x 2	25 Pcs.	250 Pcs.	18,500 Pcs.



○ FTSO100 ○ FTSO101 ● FTSO102

Thread Size	Min. Order Qty.	Qty. / Case	Qty. / Pallet
3/4" - 16 UNF	25 Pcs.	250 Pcs.	18,500 Pcs.



● FT1000 ● FT140 ● FT130 ● FT190 ● FT160
○ FT110 ● FT191 ● FT170 ● FT180

Thread Size	Min. Order Qty.	Qty. / Case	Qty. / Pallet
3/4" - 16 UNF	25 Pcs.	250 Pcs.	18,500 Pcs.



○ FTV100 ● FTV102 ● FTV103 ● FTV101 ● FTV104

Thread Size	Min. Order Qty.	Qty. / Case	Qty. / Pallet
7/8" x 3/5" Dia. Male	25 Pcs.	250 Pcs.	18,500 Pcs.



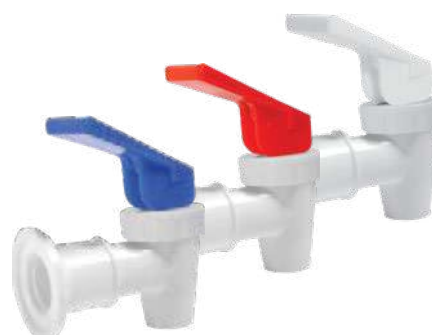
● TF130 ● TF120 ○ TF110 ● TF140

Thread Size	Min. Order Qty.	Qty. / Case	Qty. / Pallet
3/4" - 16 UNF	25 Pcs.	250 Pcs.	18,500 Pcs.

REPLACEMENT VALVES

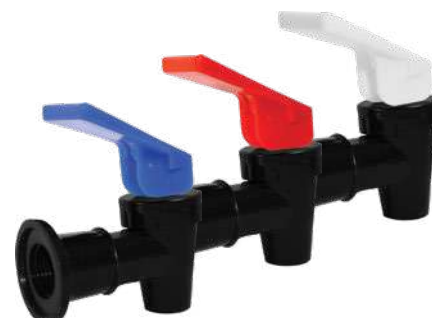
● TF230
 ● TF220
 ○ TF210

Thread Size	Min. Order Qty.	Qty. / Case	Qty. / Pallet
3/8" - 18 NPS Female	25 Pcs.	250 Pcs.	18,500 Pcs.



● TFB210
 ● TFB220
 ○ TFB230

Thread Size	Min. Order Qty.	Qty. / Case	Qty. / Pallet
3/8" - 18 NPS Female	25 Pcs.	250 Pcs.	18,500 Pcs.



● TF330
 ● TF320
 ○ TF310

Thread Size	Min. Order Qty.	Qty. / Case	Qty. / Pallet
3/8" - 18 NPS Female	25 Pcs.	250 Pcs.	18,500 Pcs.



● TFB330
 ● TFB320
 ○ TFB310

Thread Size	Min. Order Qty.	Qty. / Case	Qty. / Pallet
3/8" - 18 NPS Female	25 Pcs.	250 Pcs.	18,500 Pcs.



● FTSS100CP
 ● FTSS100GLD
 ● FTSS100ORB

Thread Size	Min. Order Qty.	Qty. / Case	Qty. / Pallet
1" x 3/4" Dia. Male	25 Pcs.	250 Pcs.	18,500 Pcs.

Pack Qty.	2 Pack	4 Pack
● Silver	FTSS100CPDP2	FTSS100CPDP4
● Gold	FTSS100GLDDP2	FTSS100GLDDP4
● Oil Rubbed Bronze	FTSS100ORBDP2	FTSS100ORBDP4





CA55PLSBB



CA55PLRD



CA28



CA48PH



55MM PUSH & REPLACEMENT CAPS

- CA55PHW
- CA55PHRD
- CA55PHB
- CA55PHGR
- CA55PHPP
- CA55PHPK

Fixture Size	Description	Min. Order Qty.	Case Qty.
55mm Push Cap	3 Gal, 5 Gal, Cap with Hole & Foam for Crown Top	500 Pcs.	500 Pcs.

● CA55PLSBB

Fixture Size	Description	Min. Order Qty.	Case Qty.
55mm Push Cap	3 Gal, 5 Gal, Traditional Cap for Crown Top	100 Pcs.	360 Pcs.

- CA55PLBWF
- CA55PLGN
- CA55PLRD
- CA55PLW

Cap Size	Min. Order Qty.	Case Qty.
55mm Push Cap	500 Pcs.	500 Pcs.

- CA55PLSCL-DS
- CA55PLSB-DS

Fixture Size	Description	Min. Order Qty.	Case Qty.
55mm Push Cap	3 Gal, 5 Gal, Traditional Cap for Crown Top	800 Pcs.	800 Pcs.

● CA55PSSB-DS

Fixture Size	Description	Min. Order Qty.	Case Qty.
55mm Push Cap	3 Gal, 5 Gal, Short Cap for Crown top	1,500 Pcs.	1,500 Pcs.

Item No.	Size	Bottle Size	Case Qty.
CA120	120mm Screw Cap	5 Gal. Wide Mouth	175 Pcs.
CA110	110mm Screw Cap	5 Gal. Wide Mouth	333 Pcs.
CA100	100mm Screw Cap	2 & 3 Gal. Bottle	480 Pcs.
CA53	53mm Screw Cap	5 Gallon PET Water Bottles	2,000 Pcs.
CA48	48mm Screw Cap	1, 2, 3 & 5 Gallon Water Bottles	2,800 Pcs.
CA38	38mm Screw Cap	1 Gallon Water Bottles & Glass Jugs	2,300 Pcs.

Item No.	Size	Bottle Size	Case Qty.
CA28	28mm Screw Cap	0.5, 1 & 1.5 Liter PET Water Bottles	4,800 Pcs.

Item No.	Size	Bottle Size	Case Qty.
CA48PH	48mm Screw Cap	Hole for 1, 2, 3 & 5 Gallon Bottles	700 Pcs.

STAINLESS STEEL REPLACEMENT CAPS

- CASRBLK
- CASRRD
- CASRDB
- CASRGN
- CASRPP
- CASRPK
- CASROR

Cap Size	Min. Order Qty.	Case Qty.
48mm Steel Cap	100 Pcs.	1,200 Pcs.

SPORTS BOTTLE REPLACEMENT CAPS

- CA48SPBLK
- CA48SPRD
- CA48SPDB
- CA48SPP
- CA48SPPK
- CA48SPGN

Cap Size	Min. Order Qty.	Case Qty.
48mm Screw Cap	100 Pcs.	1,200 Pcs.

55MM DEW CAPS

Color	Single	24 Pack	48 Pack	Min. Order Qty.
● L. Blue	CA55DB	CA55DBDP24	CA55DBDP48	100 Pcs. / 1 Box



100% Committed

Brio was founded on the principle to provide unmatched customer service and industry-leading dealer support. From customized business plans to fit specific goals/needs to an immense and diverse inventory that's always available, we put our customers and their business needs first.

800-781-1680 | BRIOWT.COM

*Taking the Water Industry from
the Modern World into the Future*



800-781-1680 | BRIOWT.COM