



IMAJI X KALLULA



IMAJI x KALLULA

"Just the right madness to make her interesting." - Atticus

This collaboration is a marriage of two souls. In contrast to Kallula's dark edge, this collection offers a combination of motifs from the classic Lurik to the abstract seafoam. It's a gradation of ethnicity to modernity.

IMAJI x KALLULA is exclusively available at www.thefthing.com

KALLULA DRESS SHIRT

This backless cotton dress shirt is handbrushed with natural dye from Ketapang or also known as Indian-Almond plant that is native to tropical regions.

Rp 1.199.000

Size : S - M





KALLULA DRESS SHIRT / Rp 1.199.000 / Size : S - M

A woman with dark hair is sitting on a bed, looking down. She is wearing a reversible lurik crop top and a matching skirt. The background features a large potted plant and a white curtain. The lighting is soft and moody.

REVERSIBLE LURIK CROP & LURIK SKIRT

Made out of Lurik fabric that originated from Central Java. This asymmetrical croptop can be worn reversible. With two buttons details on the inside and out, It can be adjusted to fit. While the high-slit straight skirt can be worn as a set with the crop top or by itself with a basic shirt.

Reversible Lurik Crop

Rp 499.000

Size : S - M / M - L

Lurik Skirt

Rp 649.000

Size : S - M / M - L



Reversible Lurik Crop / Rp 499.000 / Size : S - M / M - L

Lurik Skirt / Rp 649.000 / Size : S - M / M - L

KALLULA KIMONO

The blue and white abstract motif is created by airbrush to resemble seafoam. The long kimono comes with a belt and a high slit. Perfect worn for a day out or a day in bed.


Rp 1.199.000

Size : Free Size





KALLULA KIMONO / Rp 1.199.000 / Size : Free Size

A woman with dark hair is sitting on a blue sofa, leaning back with her eyes closed. She is wearing a light-colored, short-sleeved shirt with a subtle pattern and grey, high-waisted pants. The room has light blue patterned wallpaper and two round mirrors with blue frames hanging on the wall. The lighting is soft and even.

HANDBRUSH SHIRT

The handbrushed unisex shirt resemble an 80s silhouette and can be worn tied to the waist or as is.

Rp 795.000

Size : Free Size

GREY LINEN HIGH-WAISTED PANTS

These grey linen pants carry a basic silhouette with pleats detailing on its bottom and waist. Its elastic waist stretches to a size bigger.

Rp 699.000

Size : S - M / M - L



Handbrush Shirt / Rp 795.000 / Size : Free Size



Grey Linen High-Waisted Pants / Rp 699.000 / Size : S - M / M - L

SEAFOAM SHIRT

The seafoam motif on the unisex shirt creates a cool vibe without effort. Created with Indigo native to the islands of Bali, the color of the sea stays true.

Rp 795.000

Size : Free Size

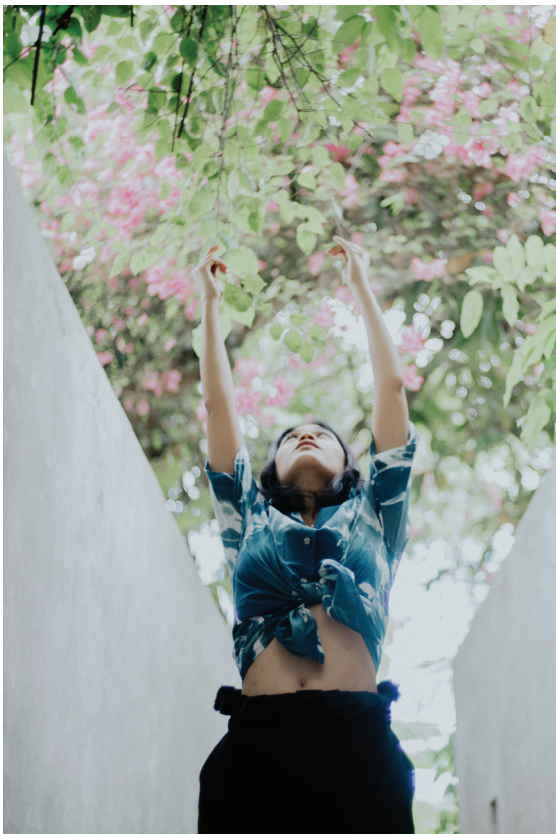
BLACK HIGH-WAISTED PANTS

These grey linen pants carry a basic silhouette with pleats detailing on its bottom and waist. Its elastic waist stretches to a size bigger.

Rp 699.000

Size : S - M / M - L





Handbrush Shirt / Rp 795.000 / Size : Free Size



Black High-Waisted Pants / Rp 699.000 / Size : S - M / M - L

