



Violette Field Threads
patterns and tutorials

*How to Add an Apron
to the Paige Dress.*

Free Apron Pattern + Tutorial

Fabric Requirements:

Size	2T	3T	4T	5	6	7,8	9,10
Apron Top	¼ yd.	¼ yd.	¼ yd.	¼ yd.	¼ yd.	¼ yd.	¼ yd.
Apron Skirt	¼ yd.	3/8 yd.	3/8 yd.	3/8 yd.	3/8 yd.	3/8 yd.	3/8 yd.

Fabric recommendations:

Lightweight Cotton, Batiste, Lawn.

Tips for Sewing...

**All seam allowances are 1/2" unless otherwise stated.*

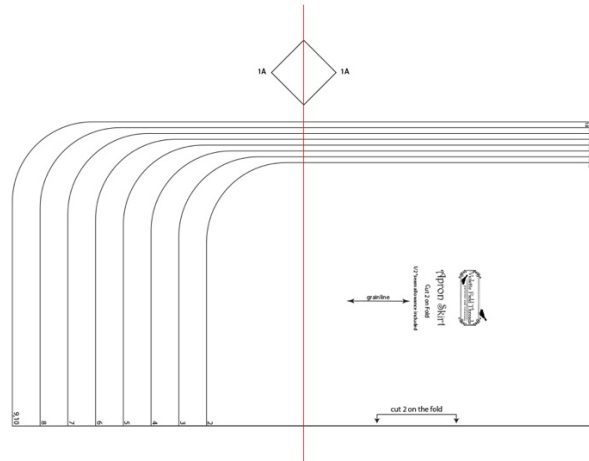
**Gathering: Adjust your sewing machine to a long stitch. Sew a straight line 1/4" from the top of the side to be gathered. Only backstitch at the end. Pull the bottom thread (the bobbin thread). The fabric will gather and can be adjusted to desired length.*

**Topstitching: A straight stitch sewn along the right side of a garment seam, edge, or trim. Once a seam has been sewn and serged or finished with a zigzag stitch, iron inside seam up and top stitch close to the seam edge. The topstitch will help to secure the finished inside seam and add extra durability.*

**Ironing: Ironing is a very important part of sewing. Be sure to iron when instructed.*

**Pre-shrink machine-washable fabrics: Wash, dry, and iron fabrics prior to beginning your project.*

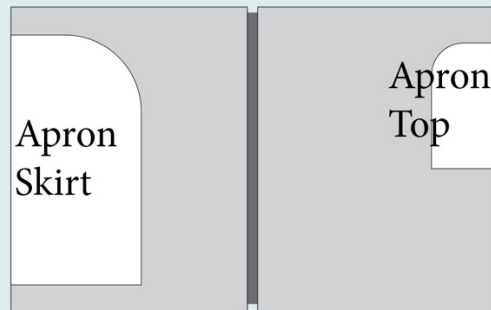
Pattern Pieces:



Cutting Instructions:

Cutting Instructions

Cut all pattern pieces according to the diagram below.



Sewing Instructions:

The apron add-on is designed to fit the front of Paige with or without the flounce or ruffles.

With ruffles or flounce: To add the apron to the original Paige with ruffles or a flounce, assemble the bodice as directed in the Paige pattern until you reach step #9. Once you reach step #9, begin following this tutorial beginning with step #5.

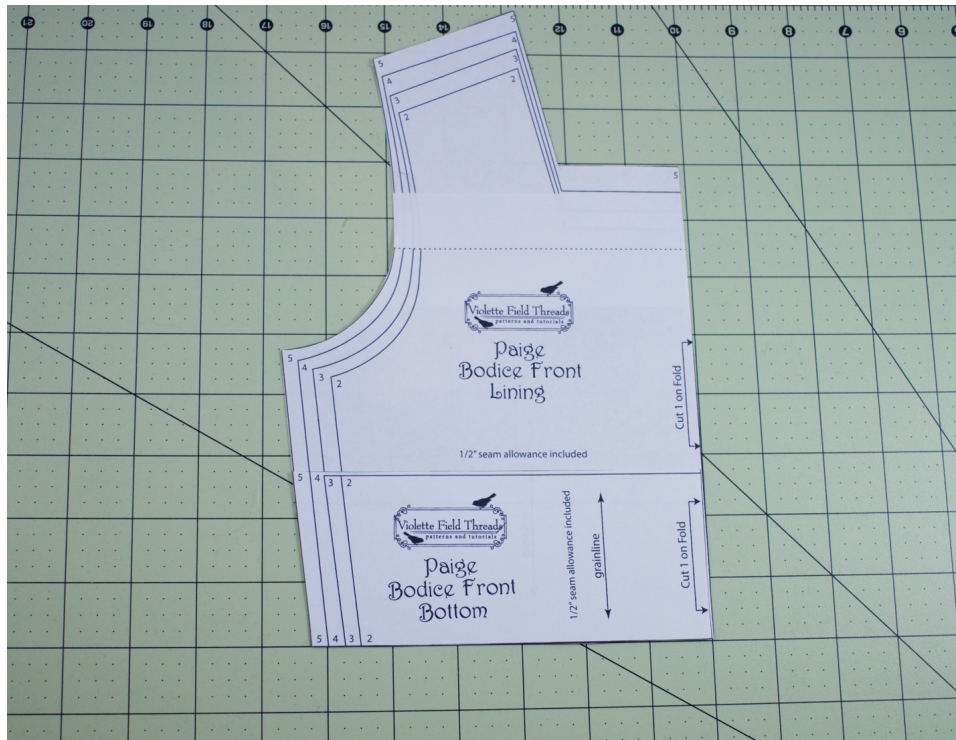


Without ruffles or flounce: If you would like to make a basic bodice with no flounce or ruffles, please follow steps 1-4 of the below tutorial. We will be working with the following pattern pieces: Paige Bodice Front Lining, Paige Bodice Front Bottom, Paige Bodice Back Lining & Paige Bodice Back Bottom.

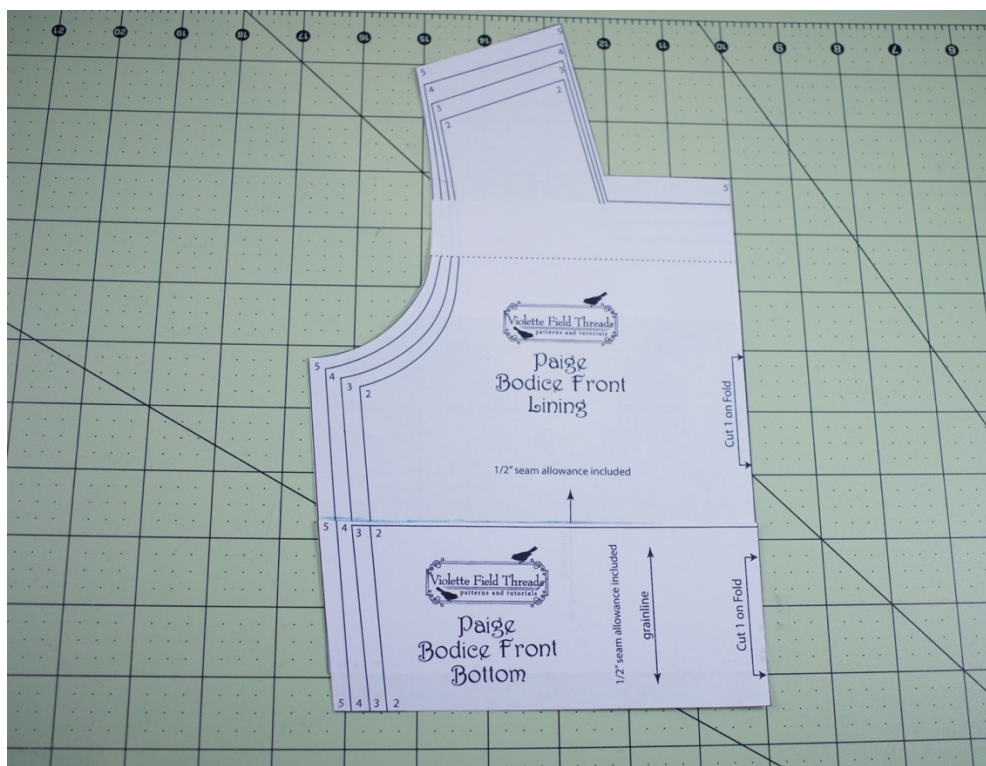


Altering the bodice:

1. Place the Paige bodice front bottom pattern piece on top of the Paige bodice front lining piece with all of the edges lining up.



2. Slide the bodice front bottom piece down 1/2", keeping the sides lined up and draw a line at the top of the bodice bottom piece right on the bodice front lining piece.



3. Remove the bodice front bottom piece and cut the bodice front lining piece along the line. This is your new bodice front piece.

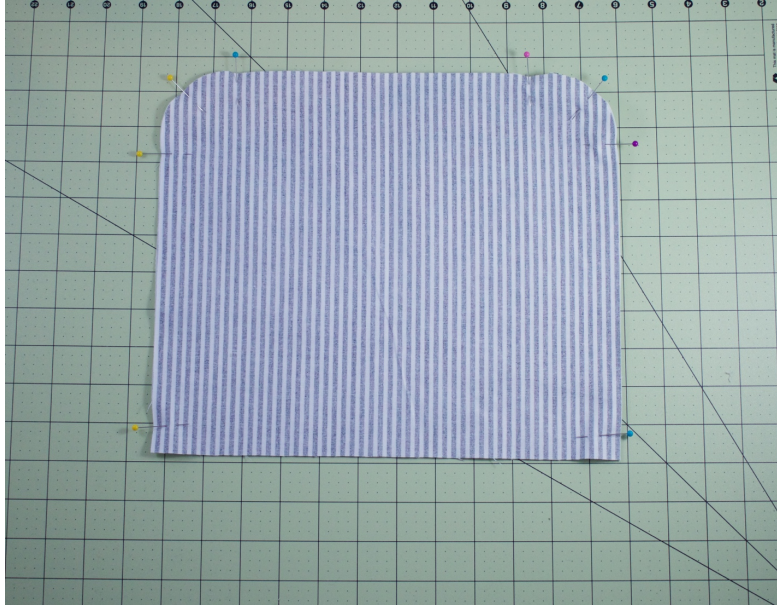


4. Repeat steps 1-3 for the bodice back lining and bodice back bottom pieces.

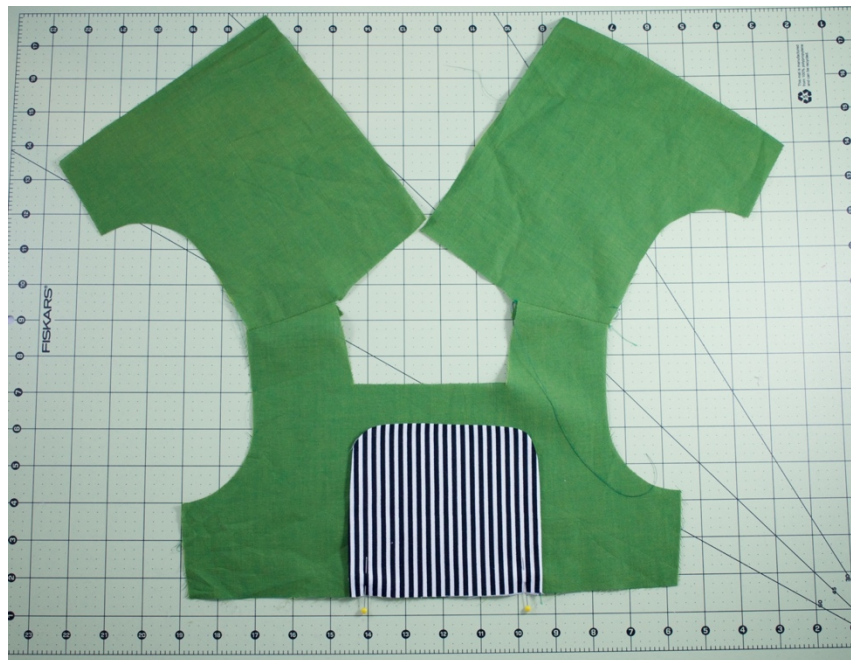
Continue assembling the front using the Paige directions for the lining.

Sewing the apron:

1. Place the apron top main on top of the apron top lining with the rights sides touching and the raw edges lining up. Pin along the long curved edge, leaving the short straight edge open for turning. Sew along the pinned seam. Trim off $\frac{1}{2}$ of the seam allowance and turn right side out. Iron the apron top flat. Repeat for the apron bottom pieces.



2. Place the wrong side of the apron top piece on the right side of the bodice front piece. The bottom raw edges should line up and the apron top should be centered. Pin along the straight bottom edge. Baste to secure.



3. Place the bodice front bottom on top of the bodice front with the right sides touching and raw edges lining up. Pin to secure along the bottom raw edge. Sew along the pinned seam. Iron the seam allowance down towards the waist and topstitch if desired.



4. Sew one or two rows of gathering stitches along the top raw edge of the apron bottom piece. Gather the apron up until it is the same width as the apron top piece.

5. Place the gathered apron bottom on top of the bodice front piece. Pin to secure. Baste along the gathered apron bottom to secure.



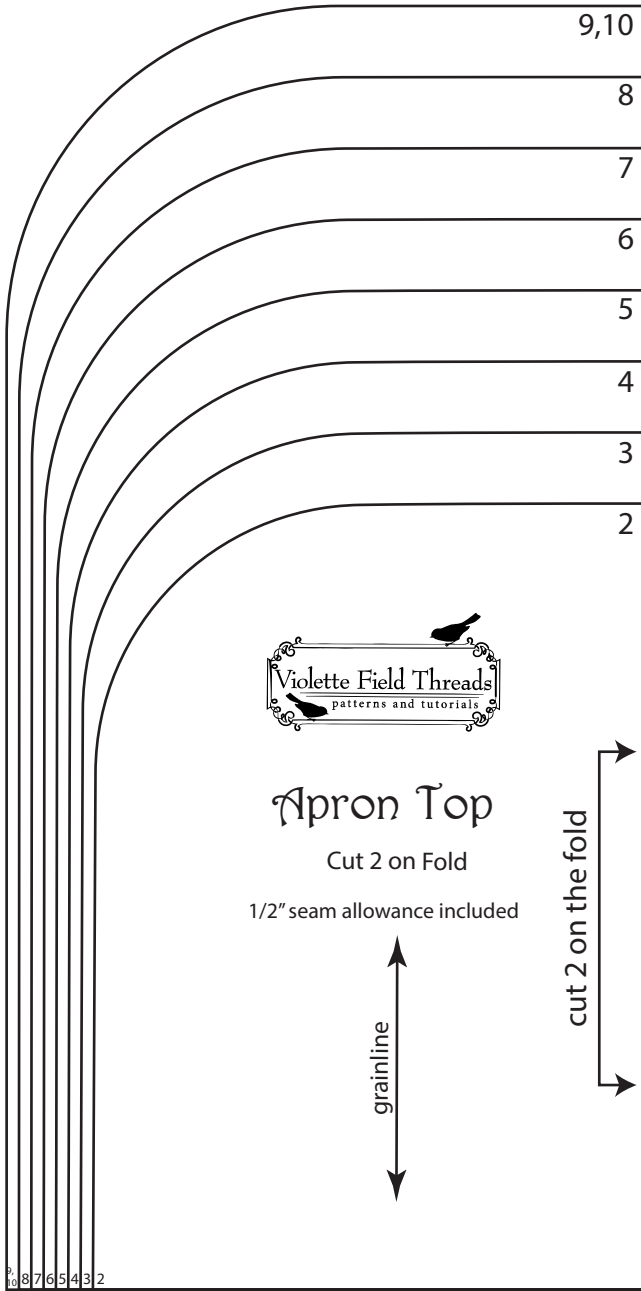
6. Flip the apron down and check the placement. If the apron appears uneven, pick out the basting stitches and sew again. If you are pleased with the apron placement, continue assembling the dress according to the instructions of the original Paige Tutorial.



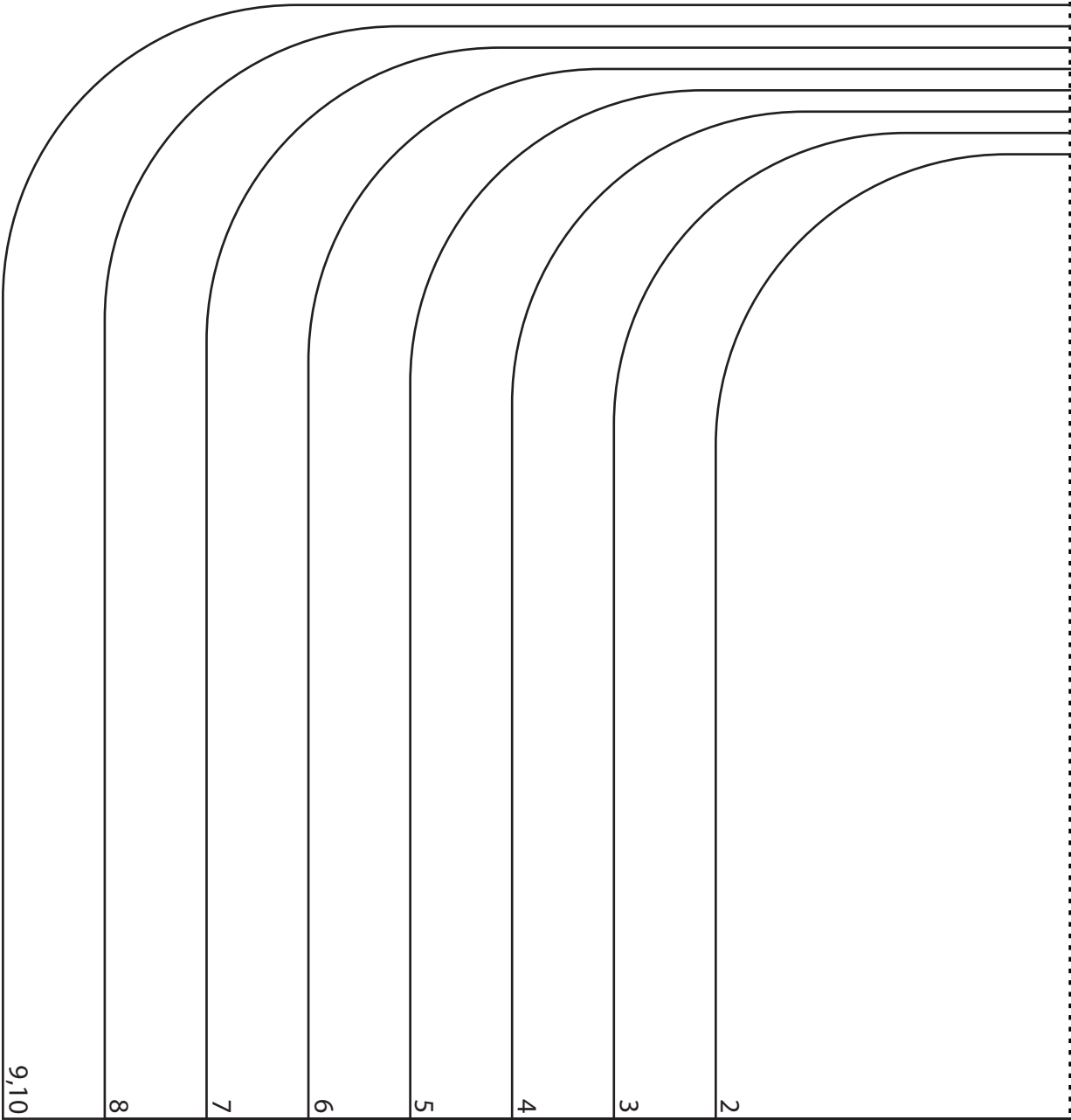
7. After the dress is assembled, secure the apron top to the bodice by sewing on a button to each corner.



Test Square
1" x 1"



1A



2

3

4

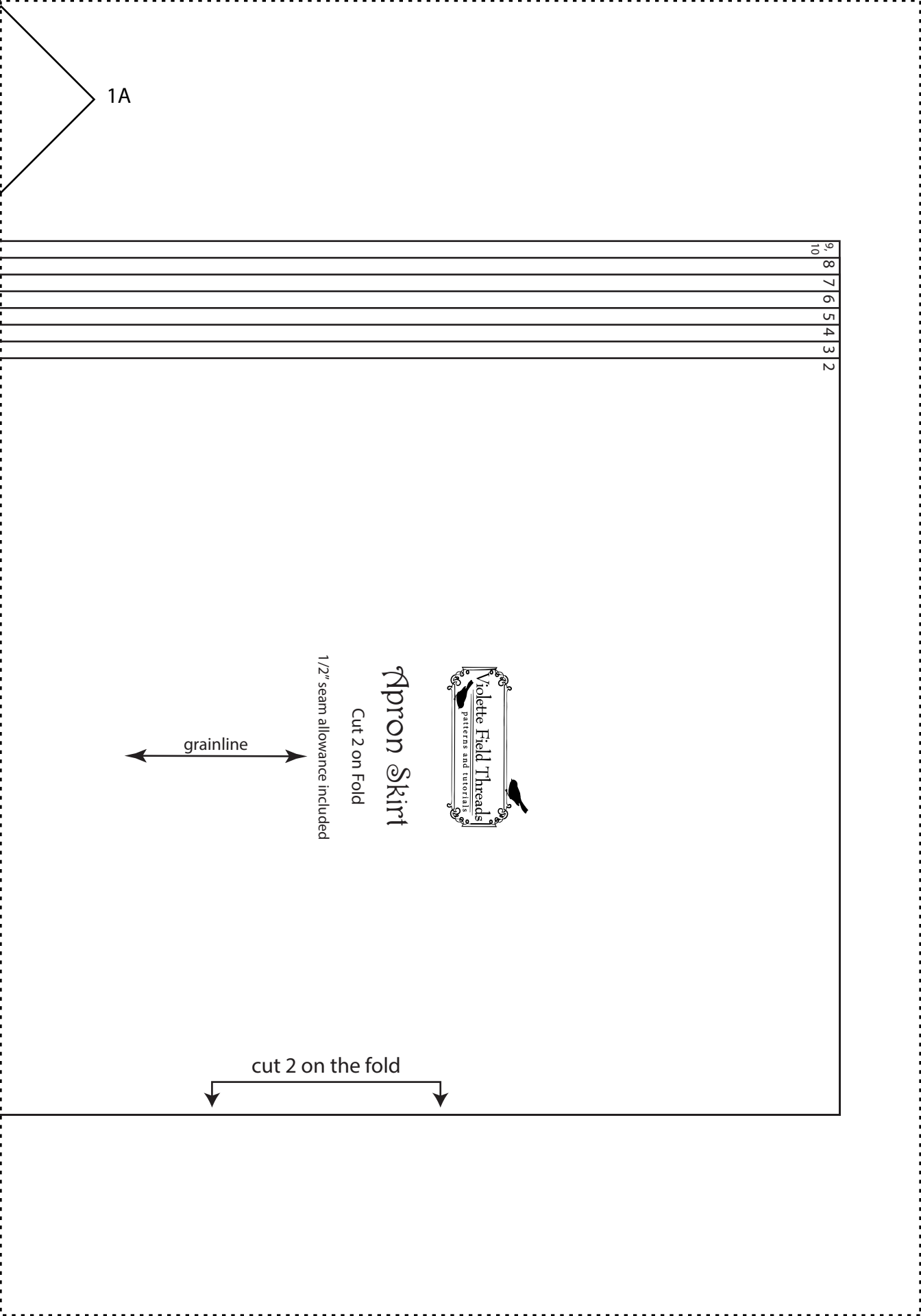
5

6

7

8

9,10



1A

9
8
7
6
5
4
3
2
10



Apron Skirt

Cut 2 on Fold

1/2" seam allowance included

grainline

cut 2 on the fold