



Violette Field Threads
patterns and tutorials

How to Add Inseam Pockets to Everything!

Free Pocket Pattern Included

Instructions:

For this tutorial we are attaching the inseam pockets to a peplum top. However, these pockets can be sewn to any garment that has side seams, including pants, dresses and coats.

1. Cut out four pocket pieces (two mirrored sets).
2. Serge or zig-zag stitch the raw side edges of the garment that the pockets will be sewn to. Serge or zig-zag stitch the straight edges of all four pockets. This will ensure that there are no unfinished edges once the pockets are sewn.
3. Place one pocket from each pocket set onto the side seam of the garment back with the right sides touching and the serged edges lining up. Pin to secure. The pocket should be placed about 1-2" down from the top raw edge of dresses, skirts and pants. **NOTE: If you are using the pockets on a coat pattern, place them at the natural spot to insert a hand into the pocket.**



4. Place the remaining pocket from each pocket set onto the side seam of the garment front with the right sides touching and the serged edges lining up. Pin to secure. The pocket should be placed in the exact same position as the first pocket set.



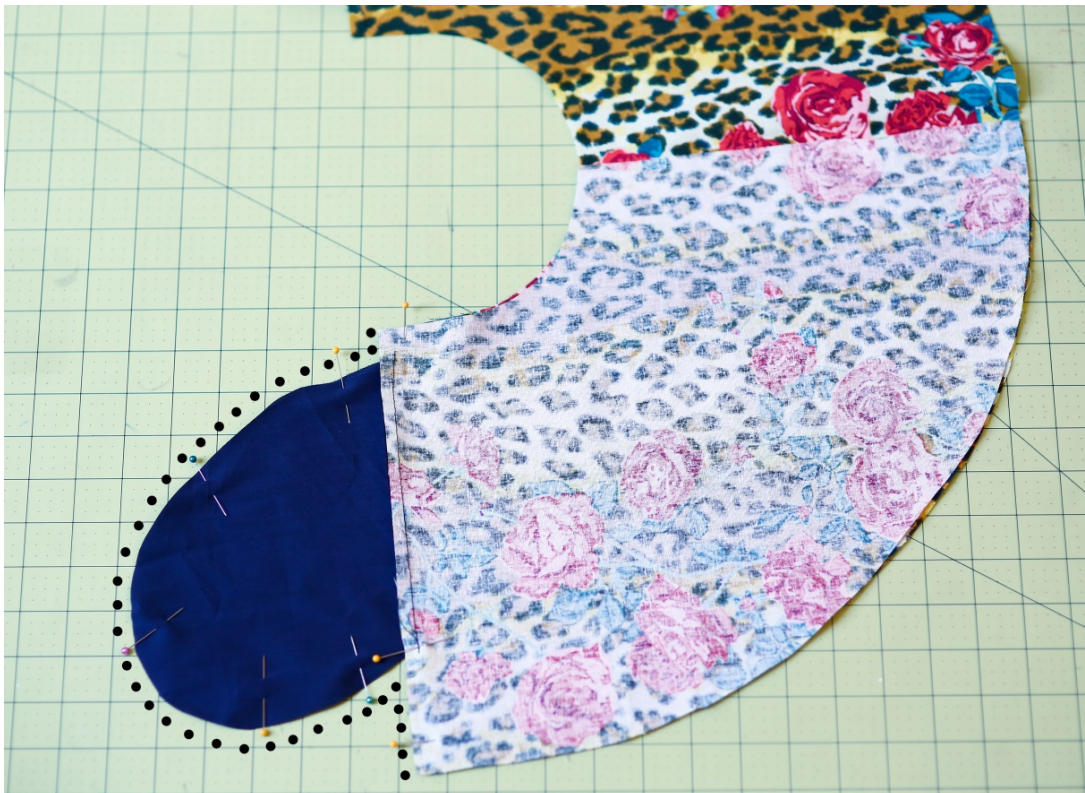
5. Sew all the pockets along the pinned seams using a ¼" seam allowance.



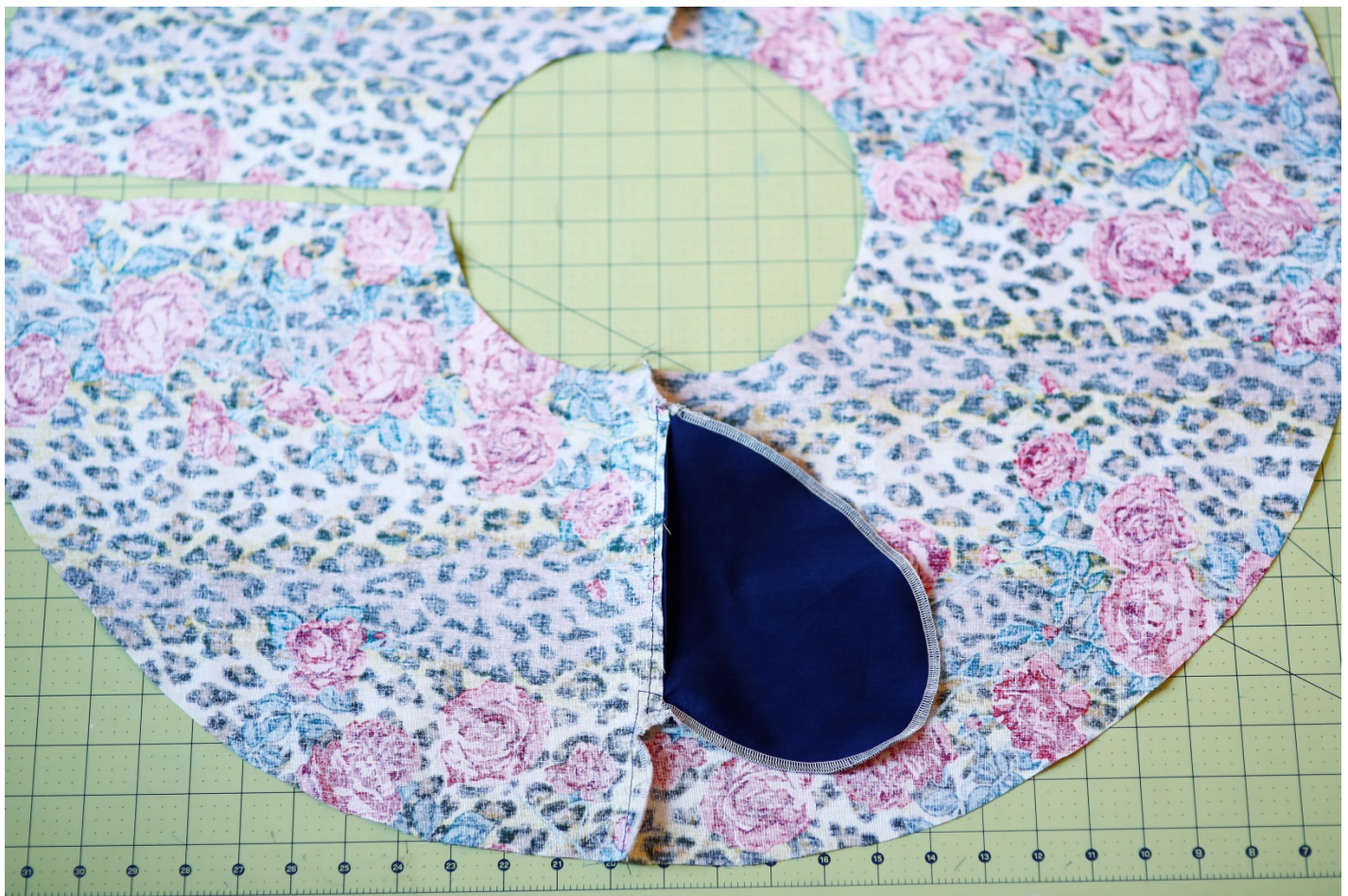
6. Flip the pockets out from each side edge.



7. Place the garment back pieces on top of the garment front with the right sides touching and the side and pocket edges lining up. Pin down each side edge. To do this, begin at the top raw edge, pin around each pocket set and continue down to the bottom raw edge.

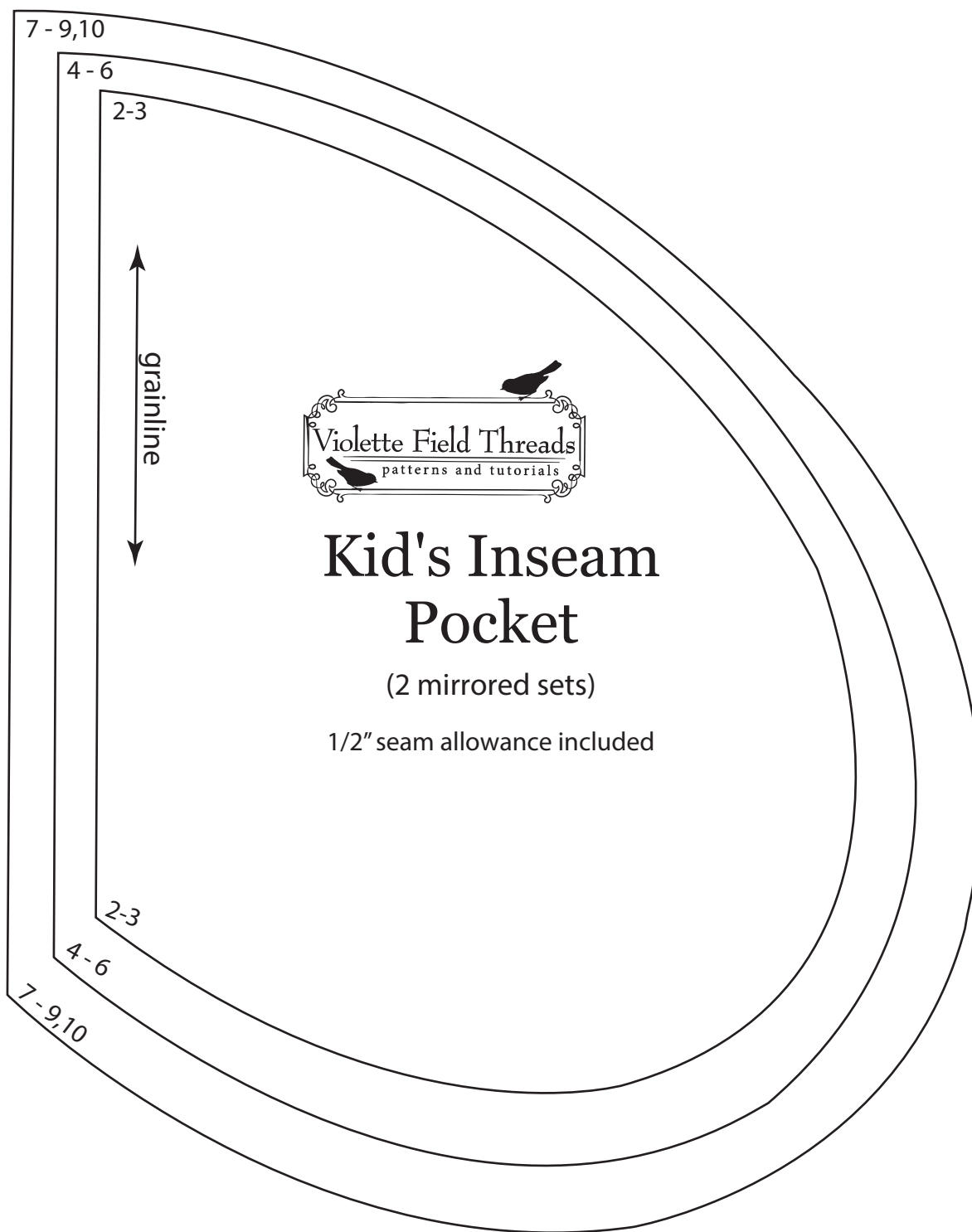


8. Sew together along the pinned seams with a $\frac{1}{2}$ " seam allowance. Iron the seams flat.



Congratulations! You have now added an inseam pocket!

Test Square
1"x1"



Test Square
1"x1"

grainline



Women's Inseam Pocket

cut 4
(2 mirrored sets)

1/2" seam allowance included