

ACCESSORY FITMENT INSTRUCTION

Product

Triton Nudge with Oval X-member

Part no.

30070T, BS30070 /181



60
Minutes

Models : All

Page 1 of 7

Date : 05/10/2016

DIAGRAM



Kit content:

	Qty	Description		Qty	Description
A	4	M10x90 Sets	I	2	M8 Hex nuts
B	6	M10 Hex nuts	J	2	M10x25x1.25 Sets (Fine thread)
C	10	M10 Spring washers	K	2	M10x40x3 flat washers
D	14	M10x30x2 Flat washers	L	2	Top mounting brackets (PS and DS)
E	2	M10x40 Sets	M	2	Bottom mounting brackets (PS and DS)
F	2	M8x25 Sets	N	2	T-bolts
G	4	M8x20x1.6 Flat washers	O	1	Nudge Bar
H	2	M8 Spring washers			

Additional equipment/Material needed for fitment :

Qty			
		Ratchet set	
		Spanner Set	
		Torque wrench	

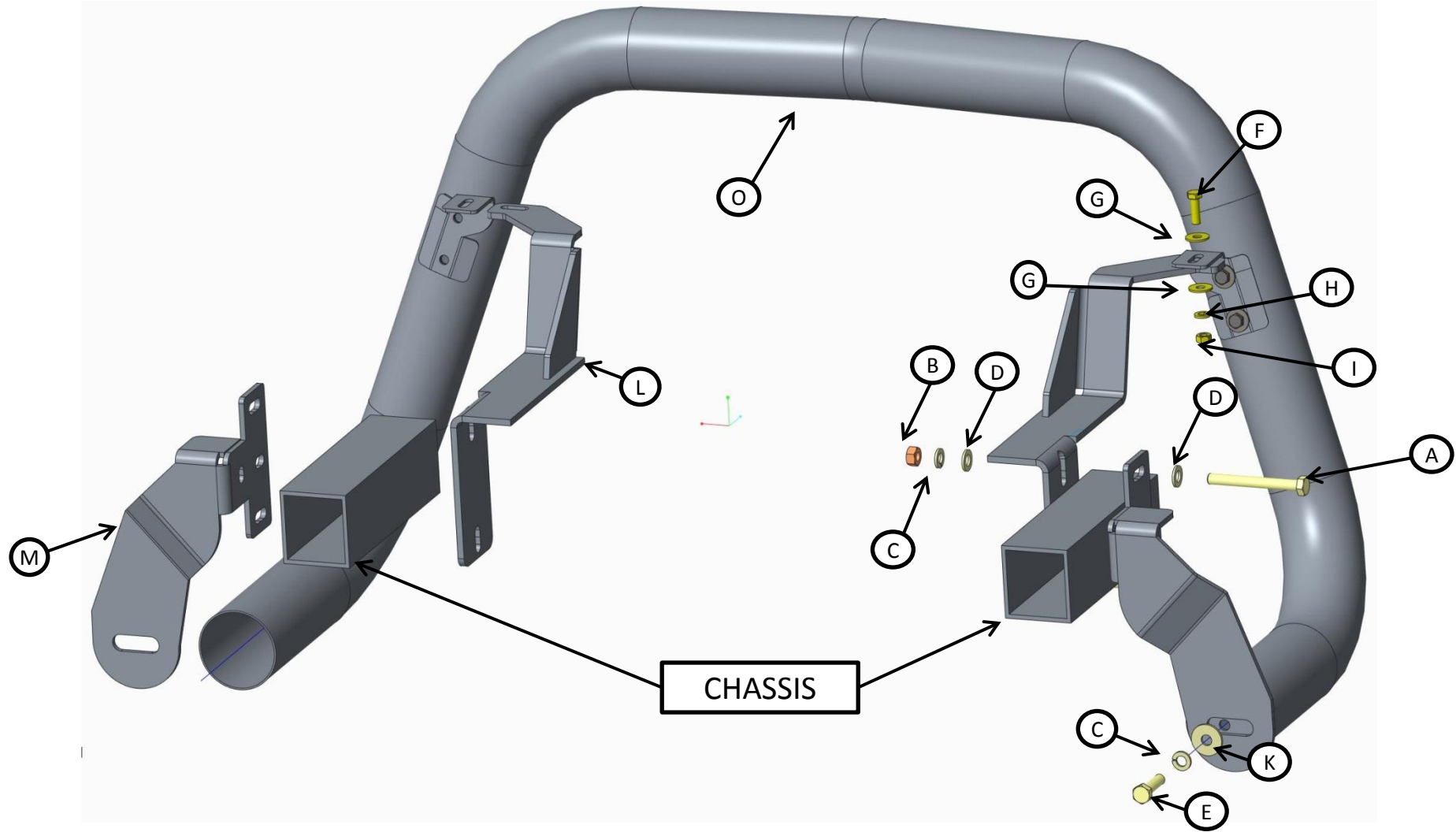
Precautions during fitment:

Do not scratch the vehicle during fitment. Do not scratch the nudge when unpacking and during fitment.

Directions for use:

Follow the steps in this fitting instruction from step 1 - 11.

Fitment Instruction: Triton Nudge



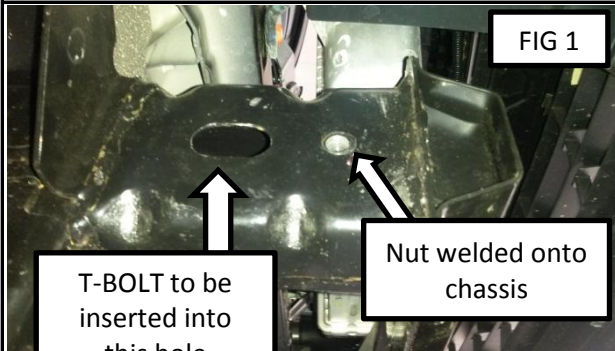
Fitment Instruction:

Triton Nudge

Visual / Graphic Illustration

Step #

Description/Method

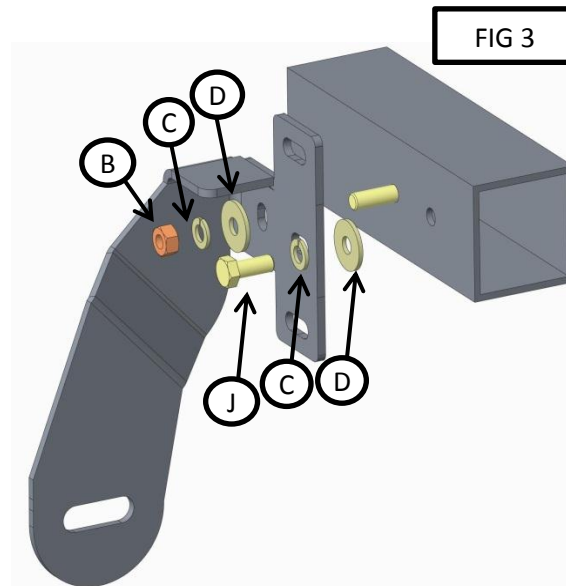
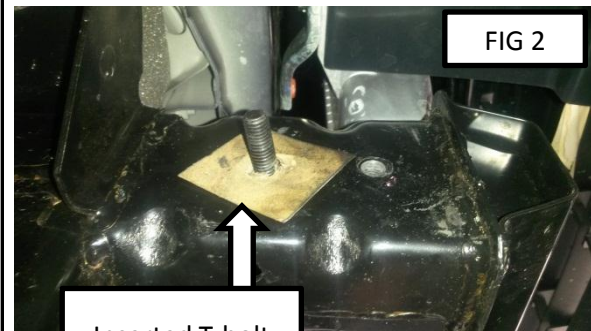


Drivers Side Shown

Do to both sides of the vehicle.

Step 1

Remove the bumper as well as the bottom covers from under the front of the vehicle.



Step 2

On the chassis find the holes needed for fitment. FIG 1. You will use the slotted hole and the threaded nut welded onto the chassis.

Step 3

Place the T-Bolt inside the slotted hole. Use the velomoid paper to hold the t-bolt in place. Shown in FIG 2.

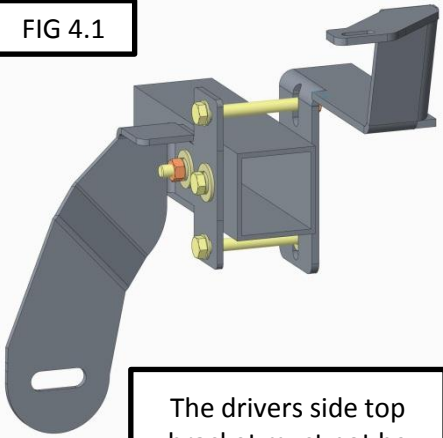
Step 4

With the T-Bolt in place. Mount the bottom bracket on the outside of the chassis (FIG 3). Bracket marked with a P is for passengers side. D is for drivers side.

Fitment Instruction: Triton Nudge

Visual / Graphic Illustration

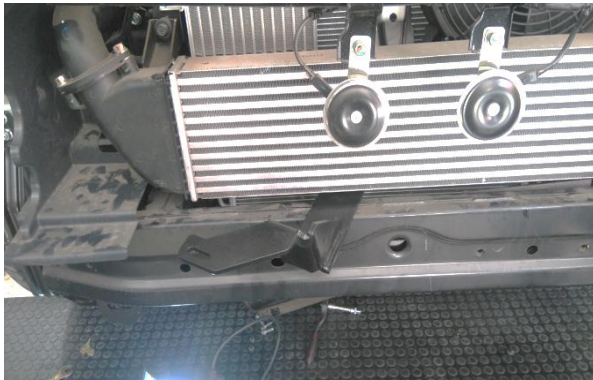
FIG 4.1



The drivers side top bracket must not be interfering with the radiator.



The top bracket must be maneuvered under the radiator.



Step

Description/Method

Step 5

With the bottom brackets now mounted. Mount the top bracket on the inside of the chassis, shown in FIG 4.1.

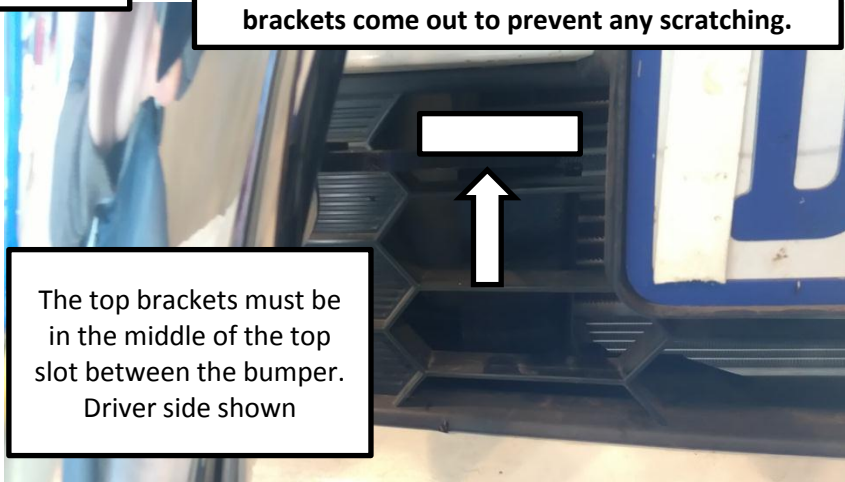
Fitment Instruction:

Triton Nudge

Visual / Graphic Illustration

FIG 4.2

Use masking tape to tape up the area where the brackets come out to prevent any scratching.



The top brackets must be in the middle of the top slot between the bumper.
Driver side shown

Step #

Description/Method

Step 6

Refit the front bumper back onto the vehicle. The top brackets must stick out the front bumper.
Shown in FIG 4.2

Step 7

With the brackets in place. You can now mount the nudge onto them. The mounting brackets have slight adjustment if any is needed.

Fitment Instruction:**Triton Nudge**

Visual / Graphic Illustration

Step #

Description/Method

Step 8

Make sure the nudge is centered and aligned.

Step 9

Tighten all nuts and bolts to specified torque.
Shown on the last page.

Step 10

The bottom cover needs to be trimmed. Fig 5 shows where trimming is required.

Step 11

Replace all covers that were taken off in step 1.

FIG 5

Drivers side shown. Do
to both sides of the

Final step

Page 7 of 7

Make sure bar is centralised and tighten all fasteners to specified torque. M8= 22Nm , M10= 42Nm , M6= 9Nm.

