

ACCESSORY FITMENT INSTRUCTION

Product

Isuzu RT85 Nudge Bar

Product Codes

1600060T, BS-1600060 (Tracking no: 159)



60
Minutes

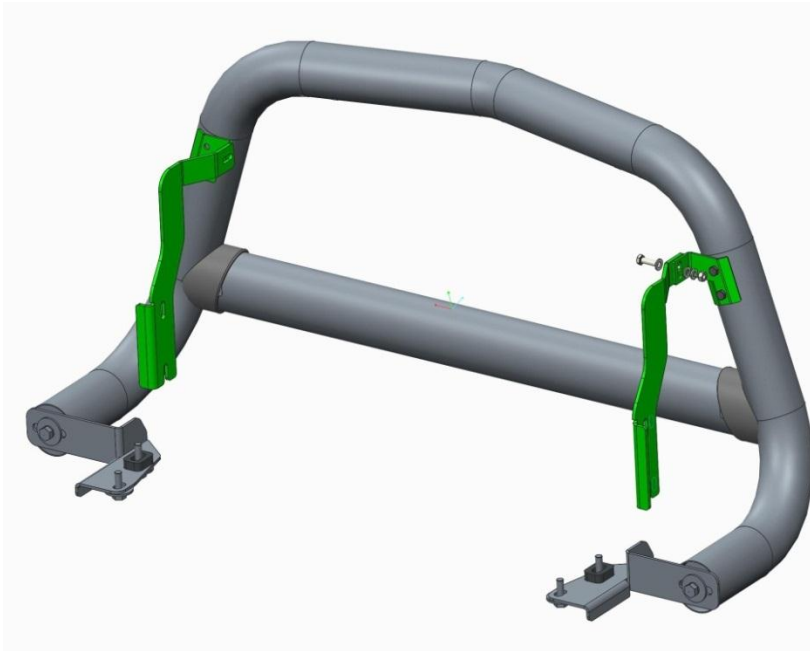
Models : 2016

Page 1 of 9

Date : 13/09/2016

DIAGRAM

Kit content:



Qty	Description	Qty	Description
2	M10x30 sets	10	M10x30x2 flat washers
2	M8x25 sets	4	M8x20x1.6 Flat washers
2	M10x40x1.25 sets (fine thread)	2	M8 hex nuts
2	M10x30x1.25 sets (fine thread)	2	M10 U-bolts
2	M8 spring washers		
10	M10 Spring washers		
4	M10 hex nuts		

Additional equipment/Material needed for fitment :

Qty	Description	Qty	Description
1	3/8 drive set	1	Measuring tape
1	13 spanner	1	Torque Wrench
1	17 spanner		Torque setting found on last page
1	screw driver set		allen key set
1	Masking tape		

Precautions during fitment:

1. Avoid direct contact with sharp objects when removing the packaging.

Directions for use:

1. Have the bar placed on a rubber mat to avoid any damage during fitment
2. Ensure the bar is secure and not hindering the bumper of the vehicle before signing of the fitment.

Fitment Instruction: Nudge with oval x-member

Kit Needed for drivers side



2 x spacers



Top
mounting
bracket



Bottom bracket marked (D) for
drivers side.



Supplied
nuts and
bolts kit

Fitment Instruction:
Nudge with oval x-member

Visual / Graphic Illustration

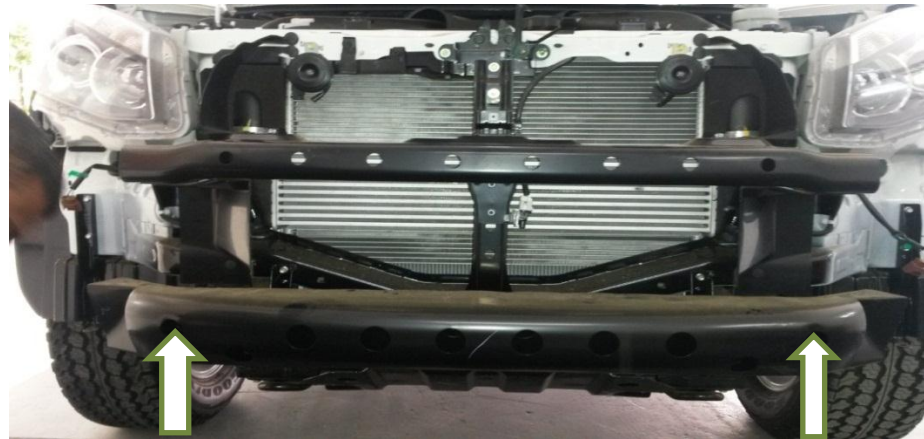
Step #

Description/Method



1

Carefully Remove the front bumper.



2

You will be using the chassis located behind the cross brace. Shown by the arrows in pic1 for step 2.

Pic1

Fitment Instruction: Nudge with oval x-member

Visual / Graphic Illustration



Pic 2

Pic 3

Pic 4

2.1

This step is fitting the drivers side top brackets. Locate the chassis shown in Pic 2. You will see an indentation, using a U-bolt position it to look like Pic3. Using the kit, loosely mount the top bracket to the outside of the chassis.

Do the same to the passenger side

Kit used per bracket

1	U-bolt
2	M10 flat washers
2	M10 Spring washers
2	M10 Hex nuts
1	Top bracket

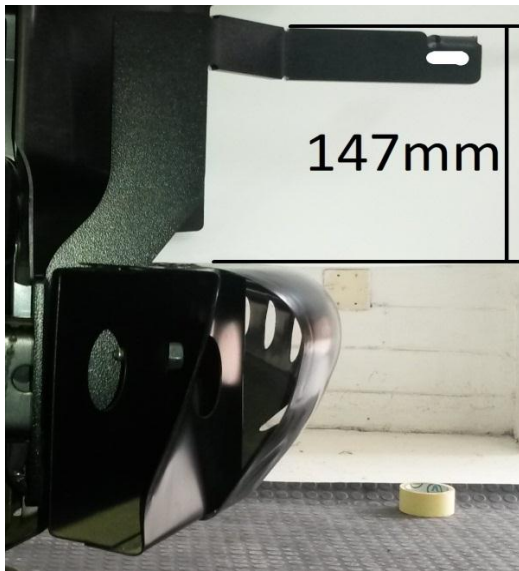
Tighten the u-bolts to 30Nm
using the torque wrench

Fitment Instruction:
Nudge with oval x-member

Visual / Graphic Illustration

Step #

Description/Method



147mm

Pic5

2.2

Now that both top brackets have been placed, you will need to adjust them to certain measurements. Refer to Pic5 and Pic6 for measurements for correct mounting.



760mm

Pic 6

Fitment Instruction:
Nudge with oval x-member

Visual / Graphic Illustration



Pic 7



Step #

Description/Method

3

Using the masking tape wrap the top left and right corners of the bumper up (shown in pic7). This is to protect it from possible scratches when replacing the bumper.

Carefully place the bumper back on the vehicle.

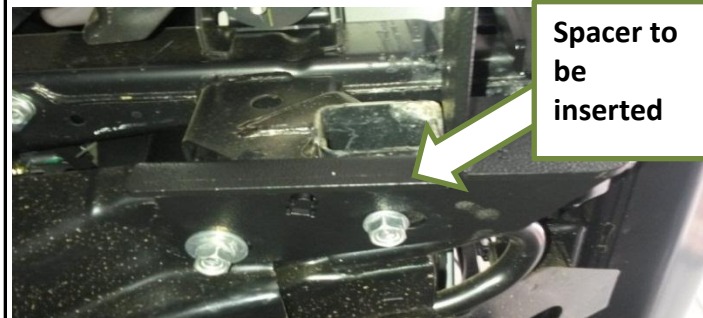
Fitment Instruction: Nudge with oval x-member

Visual / Graphic Illustration



Pic 8

kit needed per side	
1	Spacer
1	Bracket(labelled D)
1	M10x40 fine thread
1	M10x30 fine thread
2	M10 Flat washers
2	M10 Spring washers
2	M10 Hex nuts



Pic 9



Pic 10

Step #

Description/Method

4

On the drivers side. Locate the tow eye. On the outside of it you will see 2 bolts. Remove these bolts, to allow fitment of the bracket and discard these bolts(shown in pic8).

Using the bracket labelled D, the 8mm spacer and the fine thread sets, mount to the chassis. NB: Use the longer fine thread set for the spacer/front hole.

Do the same to the passengers side

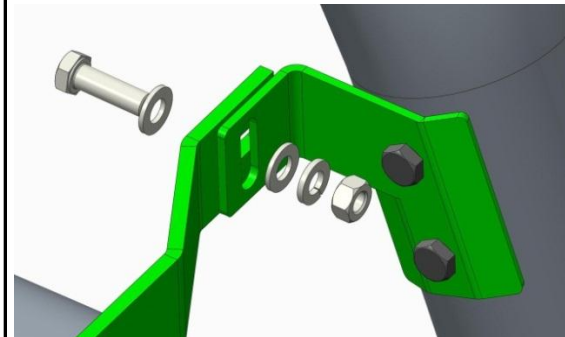
Fitment Instruction: Nudge with oval x-member

Visual / Graphic Illustration



Kit needed for bottom bracket

1	M10x30 Sets
1	M10 Flat washer
1	M10 Spring washer



Top bracket kit needed per side	
1	M8x25 Set
2	M8 Flat washers
1	M8 Spring washer
1	M8 Hex nut

Step #

Description/Method

5

Mount the nudge bar on to the protruding brackets.

Final step

Page 9 of 9

Make sure bar is centralised and tighten all fasteners to specified torque. M8= 22Nm , M10= 42Nm , M6= 9Nm.

