

ACCESSORY FITMENT

Product

Toyota Hilux facelift Tri Bumper

Part no.

(80064T)(BS-80064)(406) (Tracking No. 406)



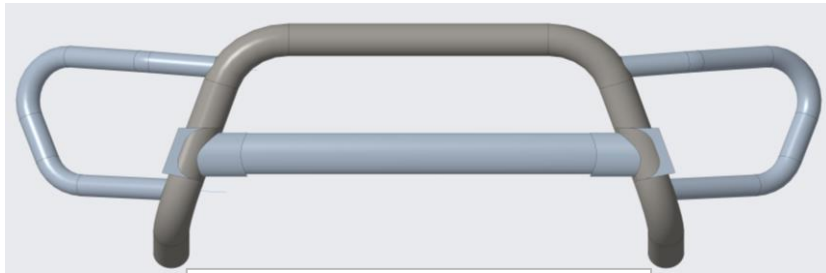
60
Minutes

Models : ALL

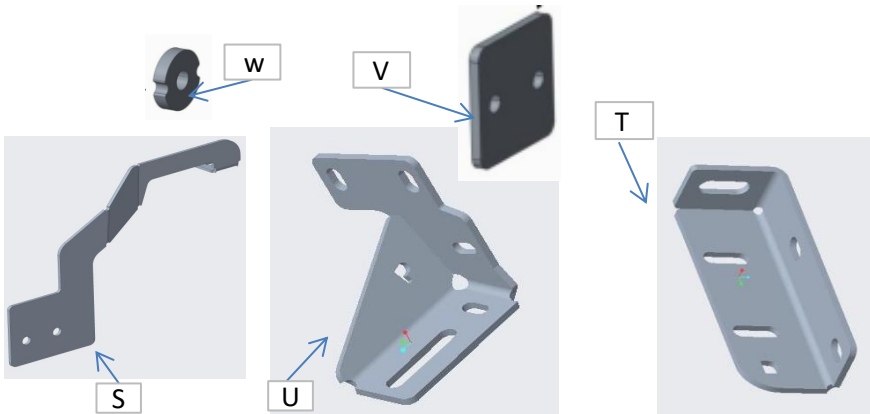
Page 1 of 6

Date : 24-11-2020

DIAGRAM



Please note that image is just for illustration.



PASSENGER SIDE
BRACKETS SHOWN.

Kit content:

	Qty			Qty	Description
A	2	M12 X 50 X 1.25 SET	N	2	M8 HEX NUT
B	2	M12 X 40 X 1.25 SET	O	2	M10 X 30 SET
C	4	M12 SPRING WASHERS	P	4	M10 X 30 X 2.5 FLAT WASHER
D	4	M12 X 30 X 2.5 FLAT WASHERS	Q	2	M10 SPRING WASHERS
E	2	M10 X 30 SET	R	6	M10 HEX NUTS
F	2	M10 X 40 X 3 FLAT WASHERS	S	2	Main Top Bracket
G	2	M10 SPRING WASHERS	T	2	Nudge bar Front Mount Bracket
H	4	M10 X 100 SET	U	2	Nudge Bar Bottom Mount Bracket
I	8	M10 X 30 X 2.5 FLAT WASHER	V	2	Clamp Plate
J	4	M10 SPRING WASHERS	W	2	Spacer
K	6	M8 X 25 SET			
L	8	M8 X 20 X 1.6 FLAT WASHERS			
M	6	M8 SPRING WASHERS			
Qty	1	Ratchet Set	Qty		
	1	Spanner Set			
	1	Torque Wrench			

Precautions during fitment:

Please take precaution when installing Nudge Bar to prevent any damages to the vehicle and the Nudge Bar

Directions for use:

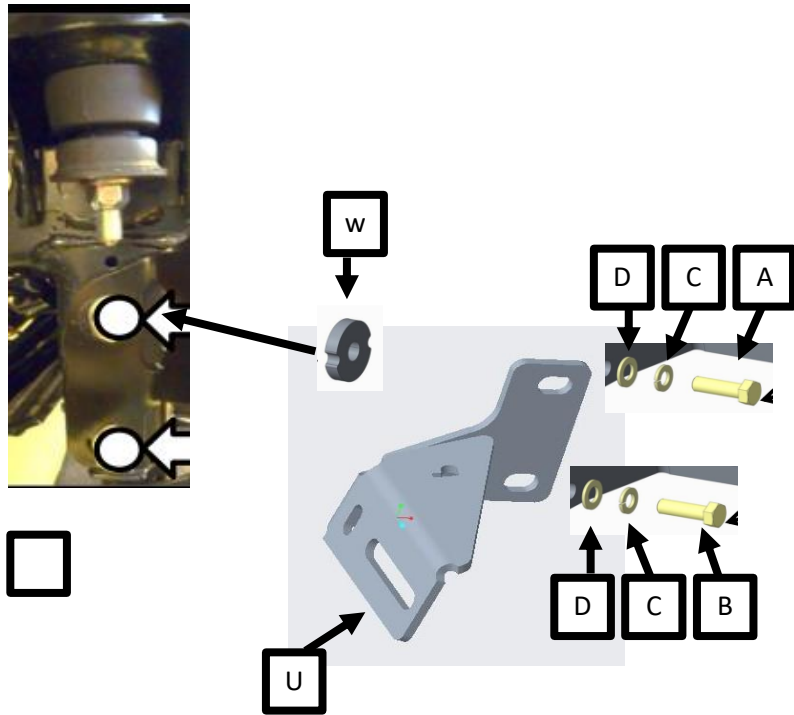
Please follow the steps below, numbered 1 to 8

Fitment Instruction: Toyota Hilux Tri Bumper

Visual / Graphic Illustration	Step No.	Description/Method
<p style="text-align: center;">Figure A Figure 1</p> <p style="text-align: center;">Trim along the bend</p> <p style="text-align: center;">Note: remove dust cover (Figure A) before starting fitment . Trim and Replace when done.</p>	1	Place the Passenger's side Mounting Bracket to the inside of the chassis and the Clamp Bracket on the outside as shown.
<p style="text-align: center;">Chassis</p> <p style="text-align: center;">H I V</p> <p style="text-align: center;">I G R S</p>	2	Insert the Fasteners as shown in Figure 1. Do not tighten fully.

Fitment Instruction: Toyota Hilux Tri Bumper

Visual / Graphic Illustration



Step No.

Description/Method

Step 3

Mount the bracket(U) to the chassis, ensure that you use the spacer(W) for the top hole

Step 4

Insert Fasteners as shown in Figure 2.
Do not tighten fully.

Fitment Instruction: Toyota Hilux Tri Bumper

Visual / Graphic Illustration

Step No.

Description/Method

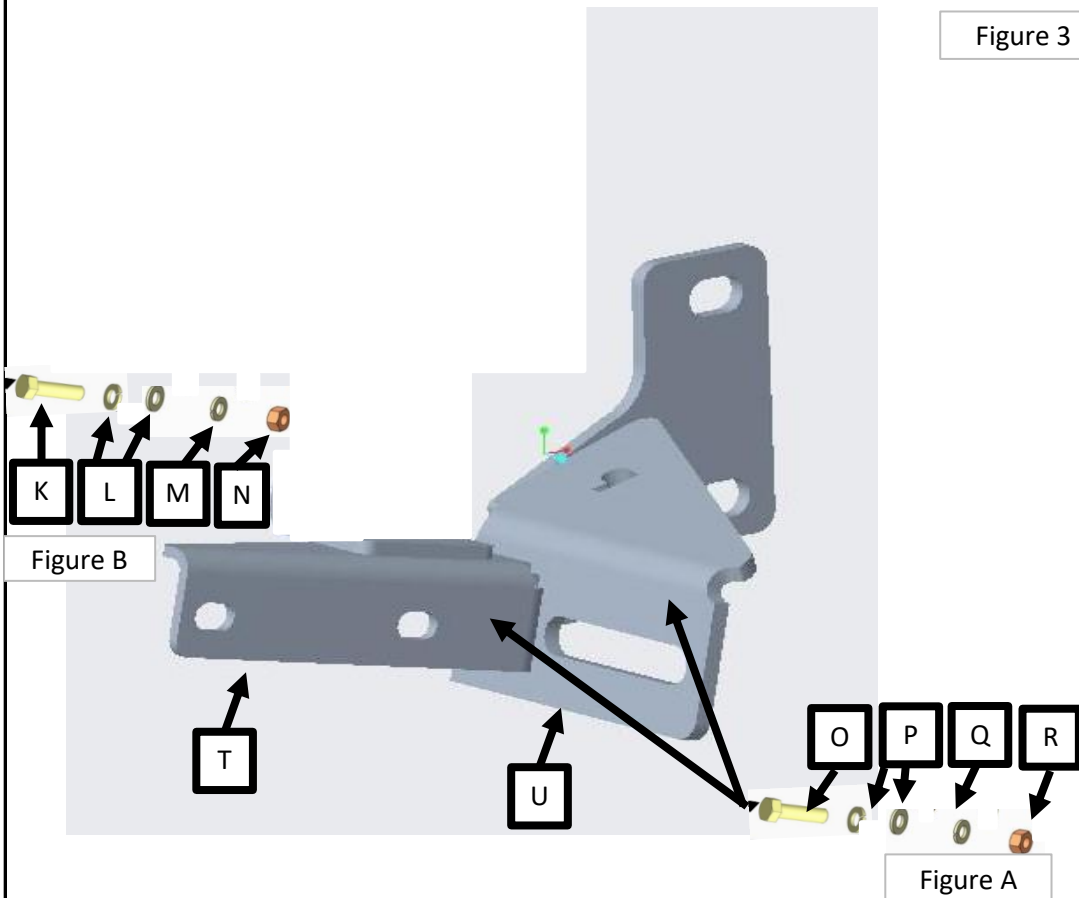
Step 5

Mount bracket(T) to bracket(U) using the fastners shown in Figure A.
Mount bracket(S) to bracket(T) using fastners shown on Figure B.

Step 6

Repeat steps 1 to 5 on the driver's side of the vehicle.

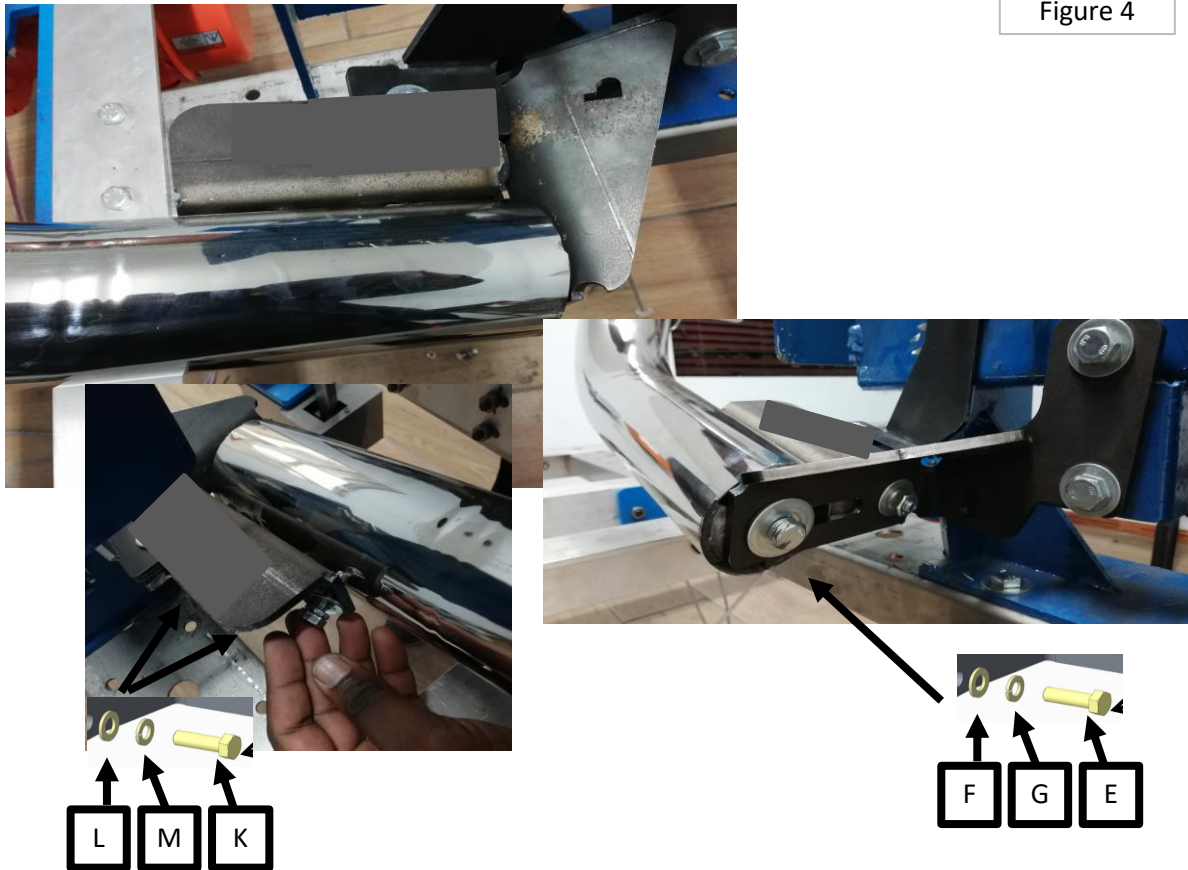
Figure 3



Fitment Instruction: Toyota Hilux Tri Bumper

Visual / Graphic Illustration

Figure 4



Step No.

Description/Method

Step 7

Place the Nudge Bar against the Chassis Mount Bracket and insert fasteners as shown in Figure 4. Do not tighten fully.

Final step

Make sure bar is centralised and tighten all fasteners to specified torque. M8= 22Nm , M10= 42Nm , M6= 9Nm.

