

ACCESSORY FITMENT INSTRUCTION

Product

Mitsubishi Pajero Sport 2020 Exceed low Nudge Bar

Part no.

30057T ; BS-30057



60
Minutes

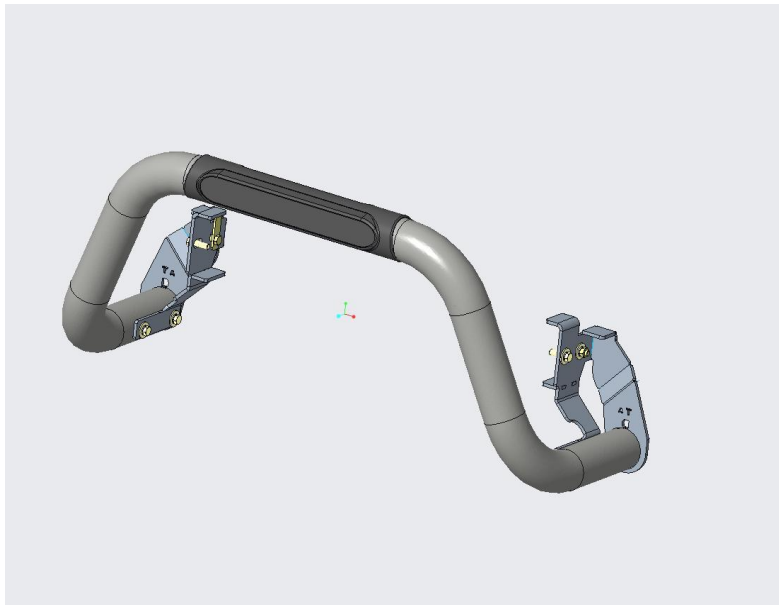
Models : PAJERO SPORT FACELIFT 2020

Page 1 of 5

Date : 12-08-2020

DIAGRAM

Kit content:



	Qty	Description		Qty	Description
A	2	M10 Hex nuts	I	2	M10x25x1.25 Sets (Fine thread)
B	6	M10 Spring washers	J	2	Bottom mounting brackets (PS and DS)
C	4	M10x30x2 Flat washers	K	2	T-bolts
D	2	M10x40x3 flat washers	L	1	Nudge Bar
E	2	M10x40 Sets	M	2	Velamoid
F	4	M8x30 Sets	O	2	Spacer
G	4	M8x22x2 Flat washers			
H	4	M8 Spring washers			

Additional equipment/Material needed for fitment :

Qty			
		Ratchet set	
		Spanner Set	
		Torque wrench	

Precautions during fitment:

Be carefull not to scratch the vehicle or the supplied parts during fitment.

Directions for use:

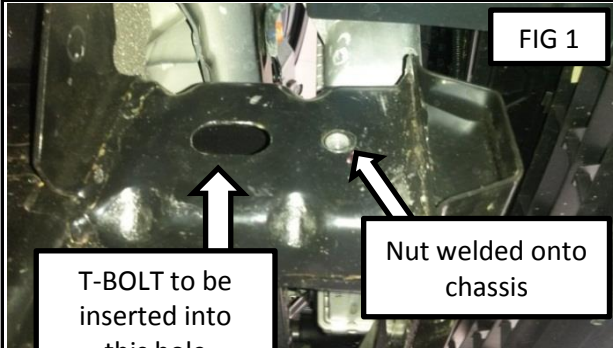
Follow the steps in this fitting instruction from step 1 - 4.

Fitment Instruction: PAJERO SPORT LOW Nudge

Visual / Graphic Illustration

Step #

Description/Method



Drivers Side Shown

Do to both sides
of the vehicle.

T-BOLT to be
inserted into
this hole

Nut welded onto
chassis

Step 1

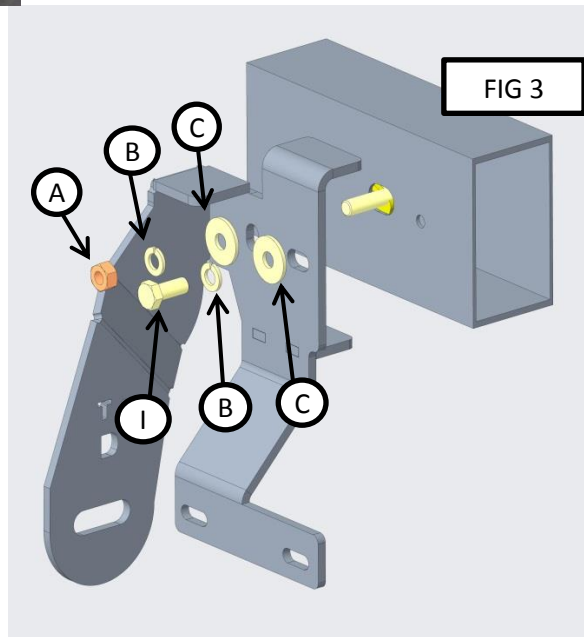
On the chassis find the holes needed for fitment. FIG 1. You will use the slotted hole and the threaded nut welded onto the chassis.



Inserted T-bolt
with velomoid.

Step 2

Place the T-Bolt inside the slotted hole. Use the velomoid paper to hold the t-bolt in place. Shown in FIG 2.



Step 3

With the T-Bolt in place. Mount the bottom bracket on the outside of the chassis (FIG 3). Bracket marked with a P is for passengers side. D is for drivers side.

Fitment Instruction: PAJERO SPORT LOW Nudge

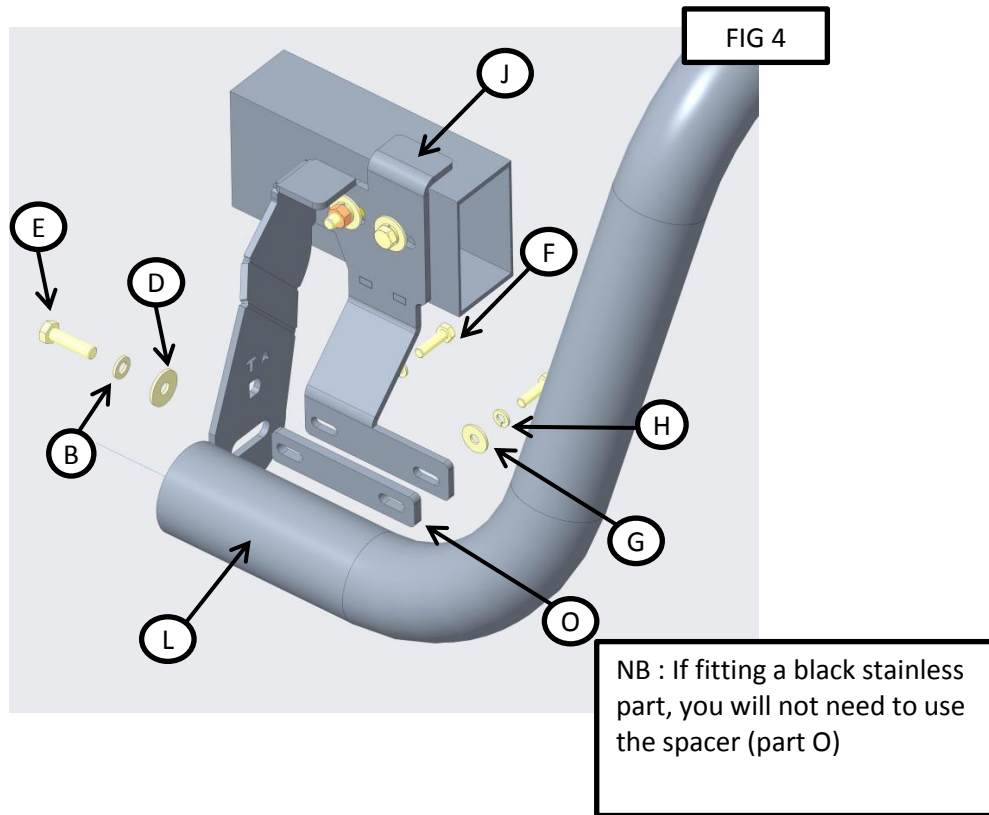
Visual / Graphic Illustration

Step #

Description/Method

Step 4

Mount the nudge bar onto the brackets fitted in step 3. Shown in Fig 4.





Fitment Instruction: PAJERO SPORT LOW Nudge

Visual / Graphic Illustration

Step #

Description/Method

FIG 5



UNCLIP THE BOTTOM
PLASTIC COVERS TO
MAKE IT EASIER TO FIT
THE BRACKETS. THEN
CLIP THEM BACK ONCE
DONE

Step 5

Unclipping and moving the bottom cover makes it easier to fit the brackets. This can then be replaced once fitment is done.

COMPLETE

Make sure bar is centralised and tighten all fasteners to specified torque. M8= 22Nm , M10= 42Nm , M6= 9Nm.

