

# ACCESSORY FITMENT INSTRUCTION

**Product**

Nissan Np200 Nudge Bar

**Part no.**

170013T, BS-170013 TN : 110



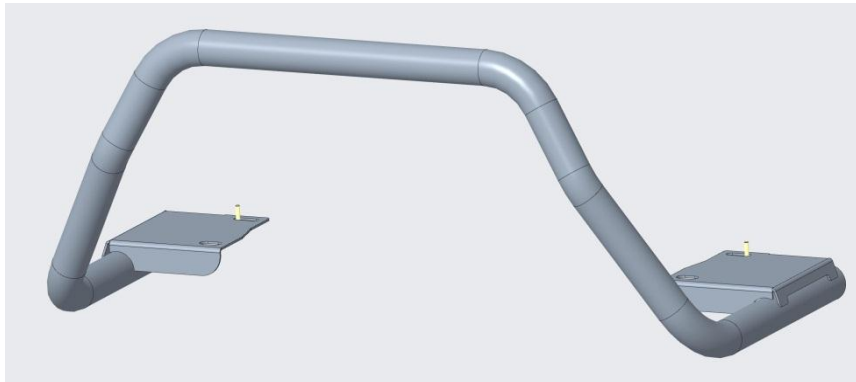
60  
Minutes

Models : All

Page 1 of 5

Date : 05/04/2018

## DIAGRAM



## Kit content:

	Qty	Description		Qty	Description
A	4	M10x30x2.5 Flat washers	H	2	Spacer plates
B	2	M10x45 Set Screws	I	1	Nudge bar
C	2	M10 Spring washer			
D	2	M10 Hex nuts			
E	2	M6x25 Set screws			
F	2	M6x25x2.5 Flat washers			
G	2	M6 Spring washers			

## Additional equipment/Material needed for fitment :

Qty		Ratchet and spanner set	Qty	

## Precautions during fitment:

Ensure you have an adequate working space. Requires two people for fitment. Ensure that the correct tools are used with installation

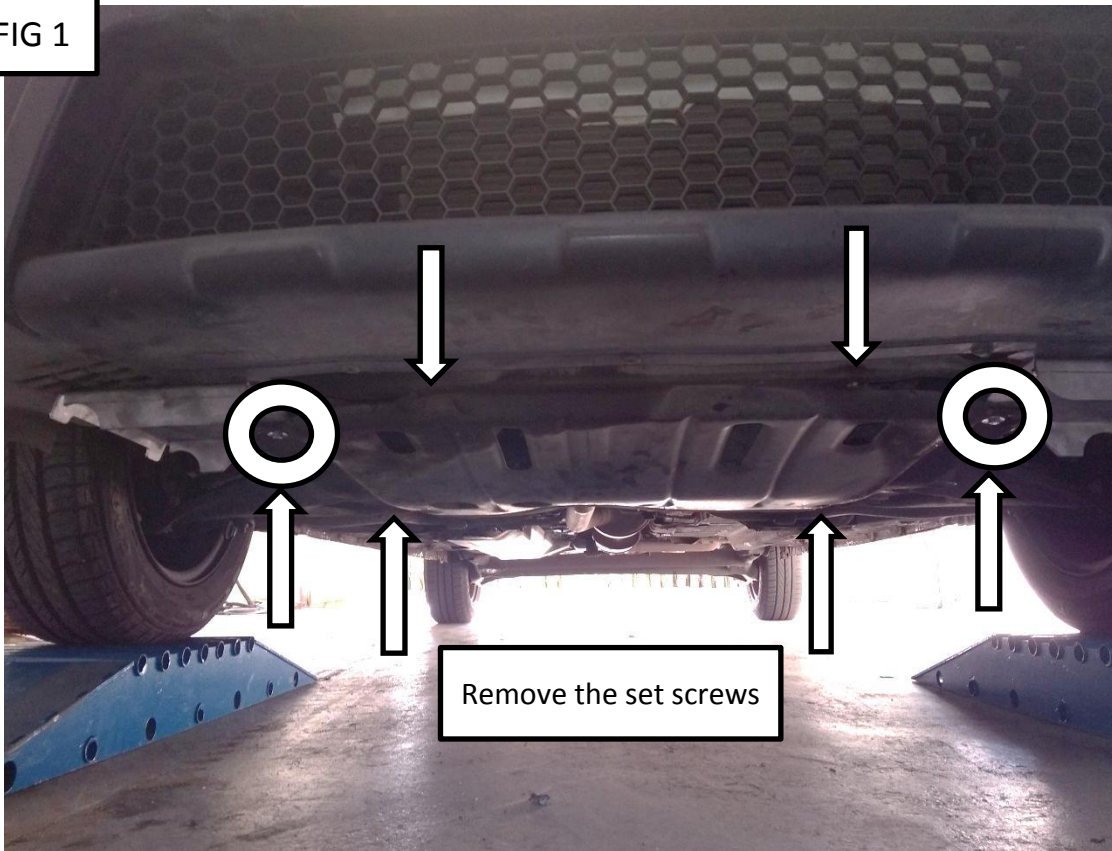
## Directions for use:

Read through the fitting instructions before starting fitment.

**Fitment Instruction:**  
Nissan Np200 Nudge Bar

Visual / Graphic Illustration

FIG 1



Step #

Description/Method

Step 1

Remove the sump. Take note of the screws/holes circled in FIG 1. These will be used for mounting the bracket.

NB

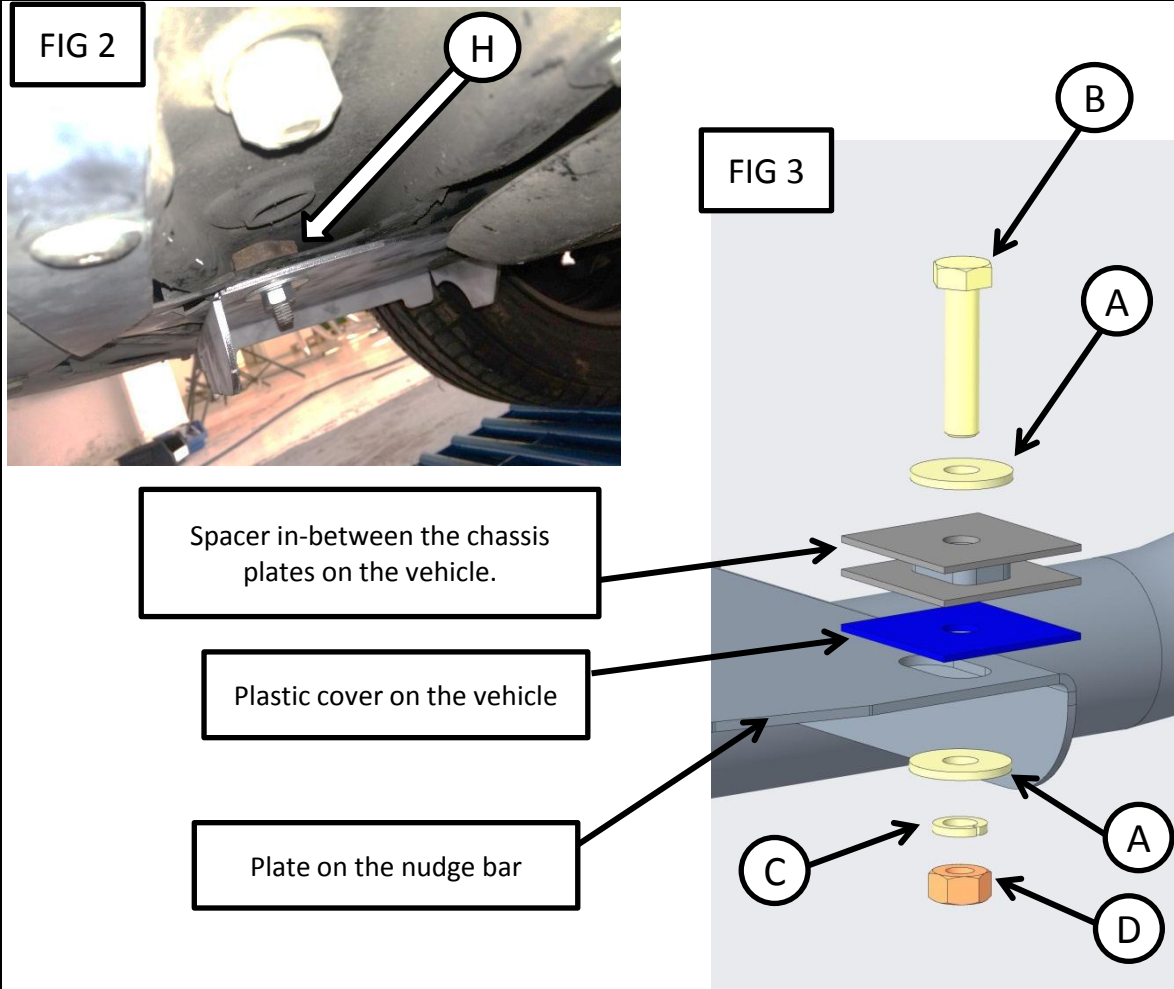
The screws circled in FIG 1 can be discarded as new screws will be used.

## Fitment Instruction: Nissan Np200 Nudge Bar

Visual / Graphic Illustration	Step #	Description/Method
	Step 2	<p>Measure +/-140mm towards the front of the vehicle from the circled set screws. On the PS you will find a big diameter plastic clip. Remove this plastic clip. On the DS you will find just a hole.</p>

## Fitment Instruction: Nissan Np200 Nudge Bar

Visual / Graphic Illustration



Step #

Description/Method

Step 3

With the plastic clip removed and hole located. Place the spacer in-between the two metal chassis plates. FIG 2.

Step 4

Using the M10 hardware shown in FIG 3. Mount the nudge bar onto the chassis. Leave slightly loose.

Step 5

Loosely place a M6 set screw through the nudge plate and into the chassis point mentioned in step 1. These will be removed once the M10 hardware is tightened so that the sump can be refitted.

Step 6

Make sure the nudge is aligned and centered. Then Tighten the M10 hardware using a torque wrench. M10= 42Nm.

**Fitment Instruction:**  
Nissan Np200 Nudge Bar

Visual / Graphic Illustration	Step #	Description/Method
	Step 7	Remove the temporary M6 set screw.
	Step 8	Refit the sump plate. Use the M6 set screw, spring washer and then the flat washer from the kit for the sump mount that goes over the nudge plate. Tighten using a torque wrench to a setting of M6= 9Nm.
		Complete