

ACCESSORY FITMENT INSTRUCTION

Product

Ford Raptor Nudge Bar

Part no.

BS-150048 & 150048T TN : 342



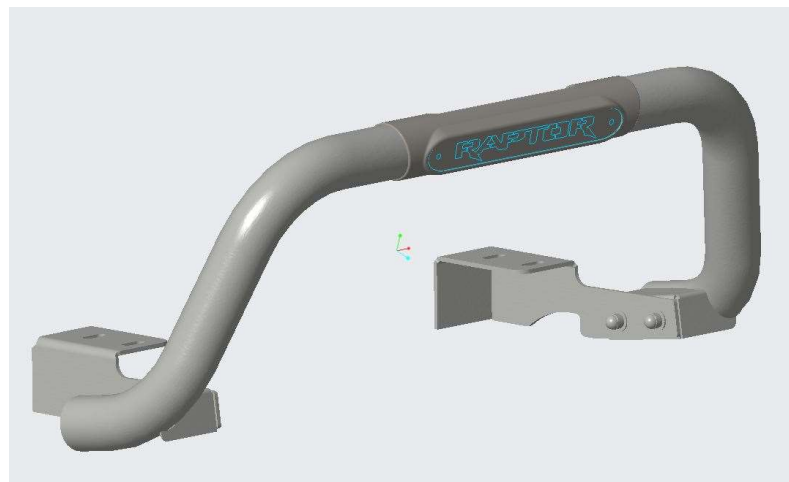
30
Minutes

Models : Ford Raptor 2019

Page 1 of 5

Date : 27-06-2019

DIAGRAM



Kit content:

	Qty	Description		Qty	Description
A	4	M10x30 sets(Black)			
B	8	M10x30x2.5 Flat washers(Black)			
C	4	M10 Spring washers(Black)			
D	4	M10 Hex nuts(Black)			
E	4	M10 Plastic caps(Black)			
F	2	Mounting Brackets(LHS+RHS)			
G	1	Complete Nudge bar			

Additional equipment/Material needed for fitment :

Qty	Description		
	Ratchet set		
	Spanner Set		
	Torque wrench		

Precautions during fitment:

Be carefull not to scratch the vehicle or the supplied parts during fitment.

Directions for use:

Follow the steps in this fitting instruction from step 1 - 5.

Fitment Instruction: Ford Raptor Nudge Bar

Visual / Graphic Illustration



FIG 1

Passenger Side Shown

Do to both sides
of the vehicle.



FIG 3

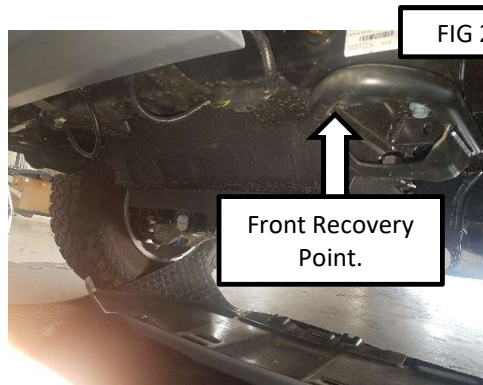


FIG 2

Step #

Description/Method

Step 1

Find the bolts needed to remove the cover. FIG 1. Cover that needs to be removed before installing the brackets and installed after complete.

Step 2

Find the bolts needed to remove front recovery point. Shown in FIG 2.

Step 3

Install the brackets inbetween the chassis and the front recovery point. Shown in FIG 3.

Fitment Instruction: Ford Raptor Nudge Bar

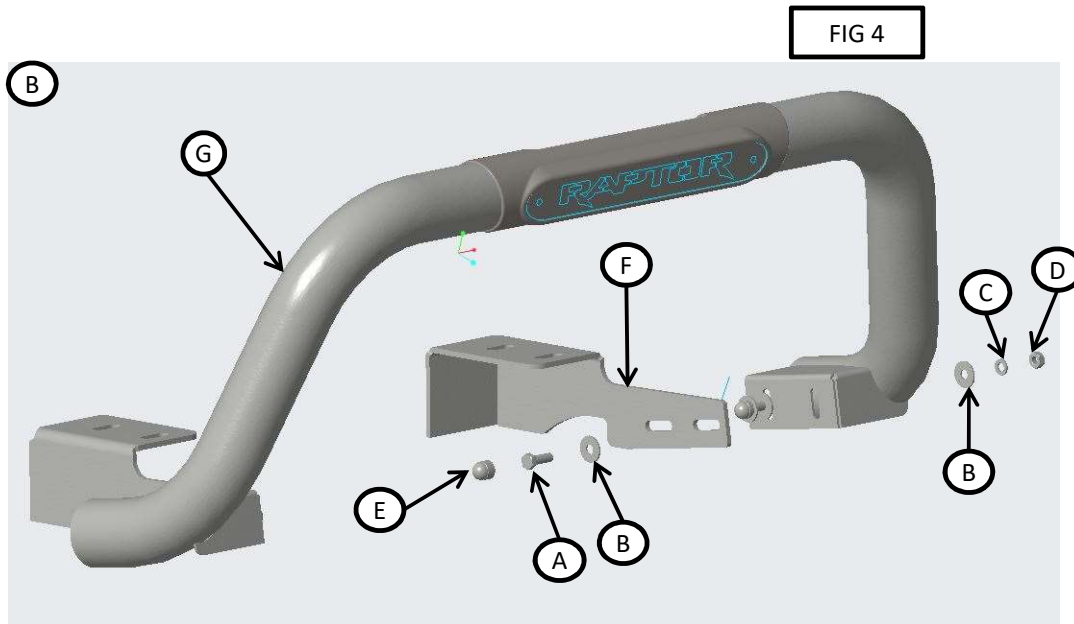
Visual / Graphic Illustration

Step #

Description/Method

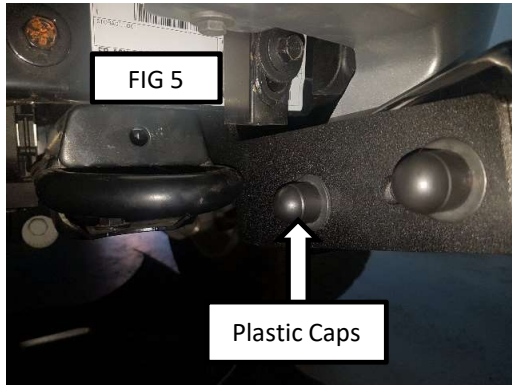
Step 4

Mount the nudge bar onto the brackets fitted in step 3. Shown in Fig 4.



Fitment Instruction: Ford Raptor Nudge Bar

Visual / Graphic Illustration



Step #

Description/Method

Step 5

Tighten bolts and install plastic caps as shown in FIG 5.

COMPLETE

Final step

Page 5 of 5

Make sure bar is centralised and tighten all fasteners to specified torque. M8= 22Nm , M10= 42Nm , M6= 9Nm.

