

# ACCESSORY FITMENT INSTRUCTION

**Product**

Hyundai Tuscon Nudge bar stainless

**Tracking no.**

11075T Tracking No. 400

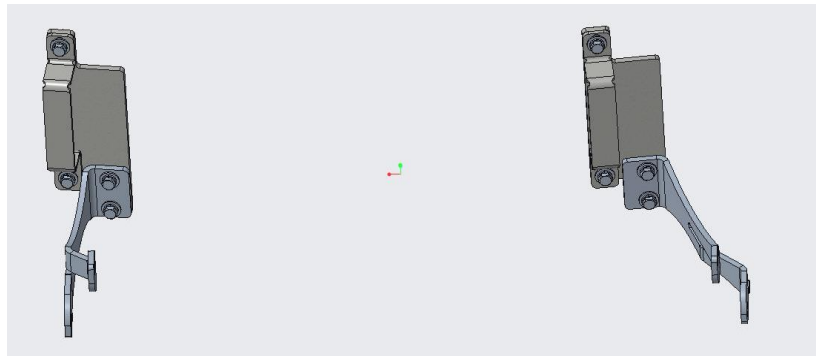
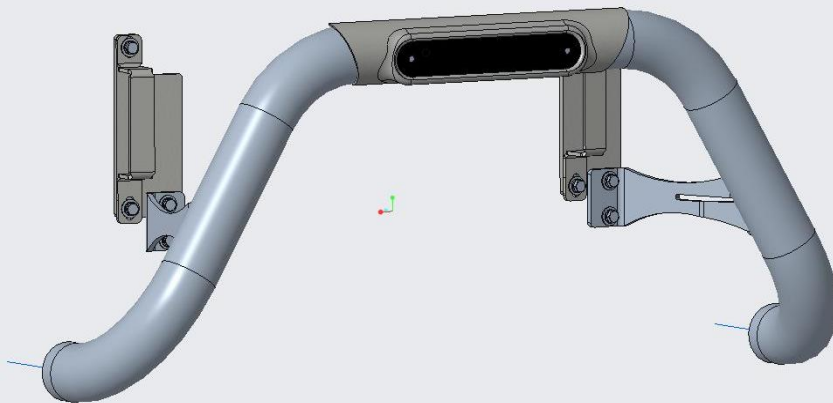


60  
Minutes

Models : All

Page 1 of 6

## DIAGRAM



## Kit content:

	Qty	Description		Qty	Description
A	8	M8 x 25 Sets	H	2	Chassis Mount Bracket
B	8	M8 x 20 x 1.6 Flat Washers	I	2	Clamp Bracket
C	8	M8 Spring Washers	J	1	Bottom Mount Bracket LHS
D	4	M8 x 25 Sets	K	1	Bottom Mount Bracket RHS
E	8	M8 x 20 x 1.6 Flat Washers	L	1	Nudge Bar
F	4	M8 x Spring Washers			
G	4	M8 Hex Nuts			

## Additional equipment/Material needed for fitment :

Qty		Qty	
	Ratchet Set		
	Spanner Set		
	Torque Wrench		
	Masking Tape		

## Precautions during fitment:

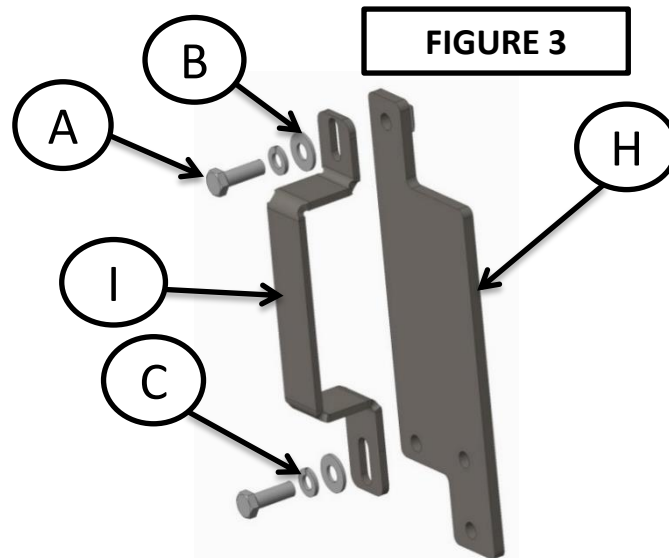
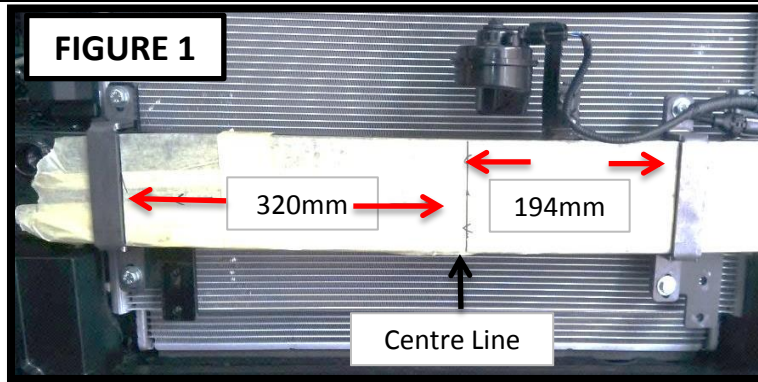
Ensure you have adequate working space. Requires two people for fitment. Ensure that the correct tools and appropriate PPE are used during installation.

## Directions for use:

Please follow all steps shown in this fitting instruction.


## Fitment Instruction: Hyundai Tuscon Nudge Bar Stainless

Visual / Graphic Illustration



Step #	Description/Method
<b>1</b>	The Bumper needs to be removed for this fitment, Remove the bottom cover , then the clips and screws in the wheel arch followed by the top clips and screws inside the bonnet.
<b>2</b>	Figure 1 shows the cross member located behind the Bumper. Find the centre of this cross member as shown. Then Measure <u>320mm</u> from centre to the edge of the clamp on the driver's side and <u>194mm</u> from the centre to the edge of the clamp on the passenger side. This will give you the correct width at which to mount the brackets.
<b>3</b>	Once you have the correct width now set the height, the top of the bracket (H) should be <u>45mm</u> from the top of the cross member as shown in Figure 2. Ensure that there is a minimum of 10mm clearance between the back of the Bracket and the Airconditioner Condenser.
<b>4</b>	Figure 3 shows how the Driver's side clamp is assembled, This will be assembled the same on the passenger's side. Tighten fully to the specified torque.

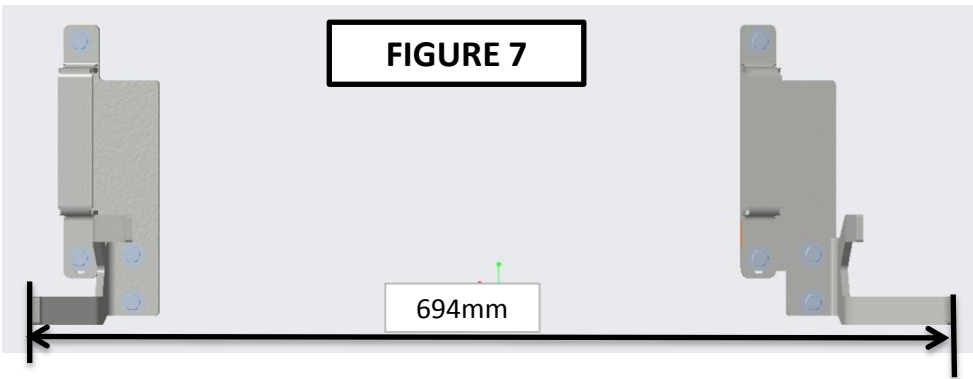
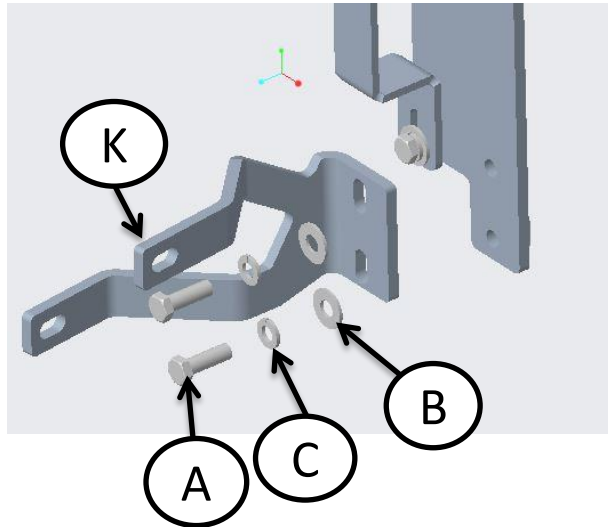
## Fitment Instruction: Hyundai Tuscon Nudge Bar Stainless

Visual / Graphic Illustration	Step #	Description/Method
<div style="display: flex; justify-content: space-around; align-items: center;"> <div style="border: 1px solid black; padding: 2px; margin-bottom: 5px;"><b>FIGURE 4</b></div> <div style="border: 1px solid black; padding: 2px; margin-bottom: 5px;"><b>FIGURE 5</b></div> </div> 	<b>5</b>	<p>With the Bumper removed, apply the masking tape onto the grill for protection against scratches as shown in Figure 4.</p>
	<b>6</b>	<p>Carefully trim the lower Grill as shown in Figures 4 &amp; 5.</p>
	<b>7</b>	<p>Now replace the bumper.</p>

## Fitment Instruction: Hyundai Tuscon Nudge Bar Stainless

Visual / Graphic Illustration

**FIGURE 6**



**FIGURE 7**

Step #	Description/Method
<b>8</b>	Bolt on the bottom bracket by sliding it through the cuts you have made in the lower grill , as shown in Figure 6. Note : Driver side shown. <b>(NOTE: Brackets in image may differ from actual bracket.Fitment the same)</b>
<b>9</b>	You can double check your measurements by checking the outside to outside measurements (Figure 7) this should be <u>694mm</u> .

**Fitment Instruction:**  
Hyundai Tuscon Nudge Bar Stainless

Visual / Graphic Illustration

Step #

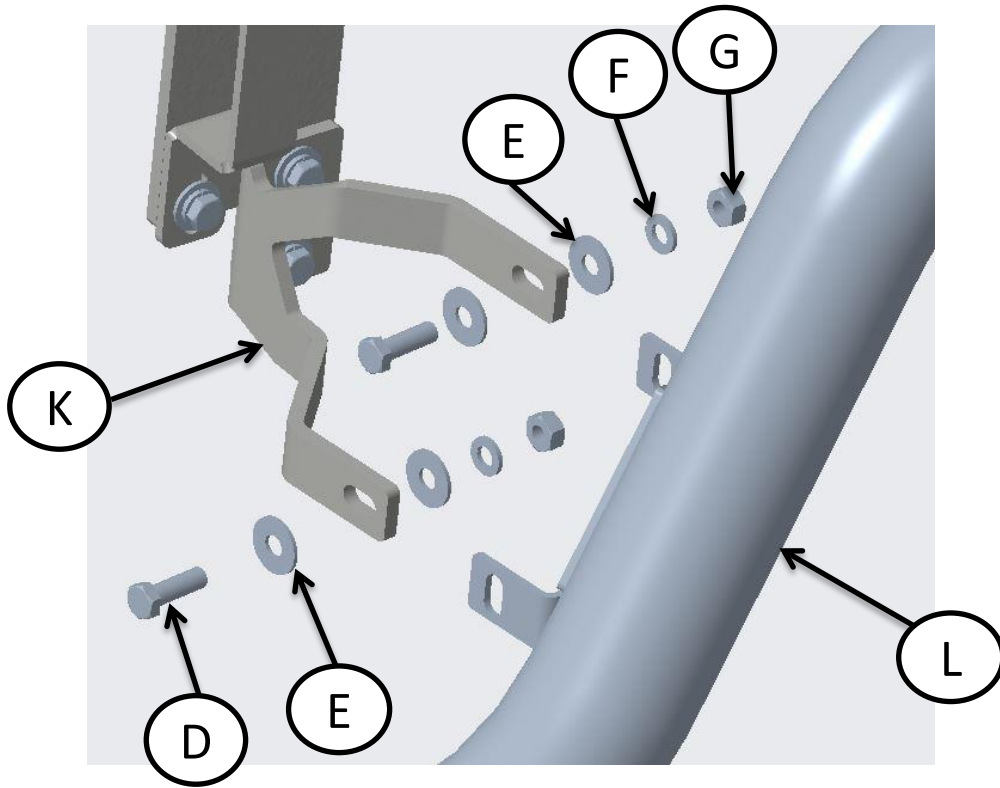
Description/Method

**FIGURE 8**

**10**

Bolt on Nudge bar as shown in Figure 8.

**Complete**



## Final step

Page 6 of 6

Make sure bar is centralised and tighten all fasteners to specified torque.  
M6= 9Nm, M8= 22Nm , M10= 42Nm.

