



## **HALA GEAR**

**Inflatable Stand Up Paddleboard**

**Owner's Manual**

[www.halagear.com](http://www.halagear.com)  
Steamboat Springs, Colorado

Here are some tips and suggestions for maintaining and getting the best performance from your Hala Inflatable SUP. Any questions, comments or suggestions, please email us at SUP@halagear.com.

### **Your Hala Inflatable SUP includes:**

- + Board Bag / Backpack + Flex Fin
- + Manual + Repair Kit + 12V Car Pump
- + Inflatable Fin Protectors + Dual Action Hand Pump with Gauge

### **Fin Set-Up**

Depending on the model, your Hala board comes with either two 4" or four 4" unbreakable side bite fins plus a removable, unbreakable 8" center fin. Use the shorter fins in whitewater, shallow water, or in flat-water where you're willing to trade some tracking for a quicker turn response. Use your removable center fin for tracking in flat-water or surfing in deeper water.

### **Valve**

Your Hala inflatable Stand Up Paddle Board features the H3 inflate/deflate valve. TO OPEN VALVE: first remove the gray outer valve cap. Then press down on the spring-loaded stem in the middle while turning it counter clockwise. This will lock the valve stem down in the "open" position, allowing air to move freely in and out of the valve.

TO CLOSE VALVE: push down on the stem while turning, clockwise. Now the stem will pop up, sealing the valve shut. In this position, you are able to pump air into the board, but when you remove the pump, the valve will not allow the air to escape. When you're finished, put the gray plastic valve cap back on to keep dirt and water out of the inner valve.

### **Inflation**

12-15 PSI is recommended. Unscrew the gray plastic outer valve cap on your inflation valve.

The 12V car pump will inflate your board to about 1-2 PSI. To use the 12v pump, put the valve in the open position and put the exhaust of the 12v pump over the open valve. This will **NOT** fully pressurize your board! When the board appears full, take the pump away and quickly push the valve to the **CLOSED** position.

With the valve CLOSED, attach your high-pressure hand pump by pushing the hose attachment on the valve and twisting the hose to the right.

To deflate your board, press down on valve stem, and turn counter clockwise. This will lock valve in the “open” position for deflation.

### **Inflation Warnings**

See “Do’s and Don’ts ” page.

### **Transport**

Now that you own a Hala Inflatable SUP, you have choices of how to transport your board. Either inflated/deflated, inside/outside of your vehicle. Make sure to store the board with the valve closed to keep water out of the board’s chamber. When not in use, store your board out of direct sunlight to keep it from gaining pressure.

### **Cleaning & Maintenance**

Clean and inspect your Hala SUP after each use. It is important to avoid and/or eliminate all moisture inside your board. If moisture of any kind is present, open the valve and dry by blowing air into your board with a vacuum or your 12V pump. Leaving any moisture inside your board for an extended period of time can cause mildew and deterioration. If the sealing surfaces of your valve become dirty, the seal may not close completely against the valve body, allowing air to escape. Usually, opening the valve when your board is inflated to full pressure will force such a quick blast of air to escape, any debris will be naturally expelled. If there is still noticeable debris, or if valve continues to leak, open inner valve by pushing stem down and turning counter clockwise. Then use a cotton swab to clean all sealing surfaces. Proper care and maintenance will improve your board’s appearance and longevity.

### **Storage**

It is best to let your board dry thoroughly before deflating it. The ideal storage position is unfolded in a cool, dry place with a small amount of air left inside. If space is limited, store your board loosely rolled, with the valve in the open position. Be sure to keep your board up off of dirt or concrete floors.

### **Repair**

Your Hala Gear repair kit contains: + 1 MEK chemical glue  
+ 2 Pieces of PVC fabric 6”x6” + 1 Valve tool + 1 Orange storage can

To make a repair, follow the these steps:

1. In a well-ventilated area, clean the surface you wish to repair with a solvent like acetone, toluene or methyl ethyl ketone (MEK) and allow solvent to evaporate.
2. Cut your patch with rounded edges, to extend 2" beyond all edges of the area you wish to repair.
3. Trace the outline of the patch over the area you wish to repair with a pencil.
4. Now you are ready to apply adhesive. Apply 2 even, thin coats of adhesive to **BOTH** surfaces. Allow adhesive to dry (5-10 minutes) to the "tacky" stage. Use a bare knuckle to test, as your fingertips contain oils that could interfere with the bond.
5. When both surfaces are still "tacky" (your knuckle should slightly stick to the surface, but no adhesive should come off on your skin) you're ready to place the patch.
6. Make sure to align patch carefully **BEFORE** bonding the two surfaces together. This is a contact adhesive, so you will **NOT** be able to realign patch once the surfaces touch.
7. Once you have aligned the patch to your board, carefully roll the patch onto the board's surface to help prevent air bubbles.
8. Thoroughly go over the surface of the patch with the edge of your valve wrench or another rounded implement, and apply pressure to ensure a solid bond
9. The bond will take approximately 24-hours to cure completely. **DO NOT** inflate your board to full pressure before that time.

### **Caution & Safety Warning**

Paddle boarding can be physically demanding and dangerous. Participating in the sport of paddle boarding may cause serious injury or death. Hala Gear suggests that you follow safety standards when using any paddle sports equipment.

Safety standards include, but are not limited to:

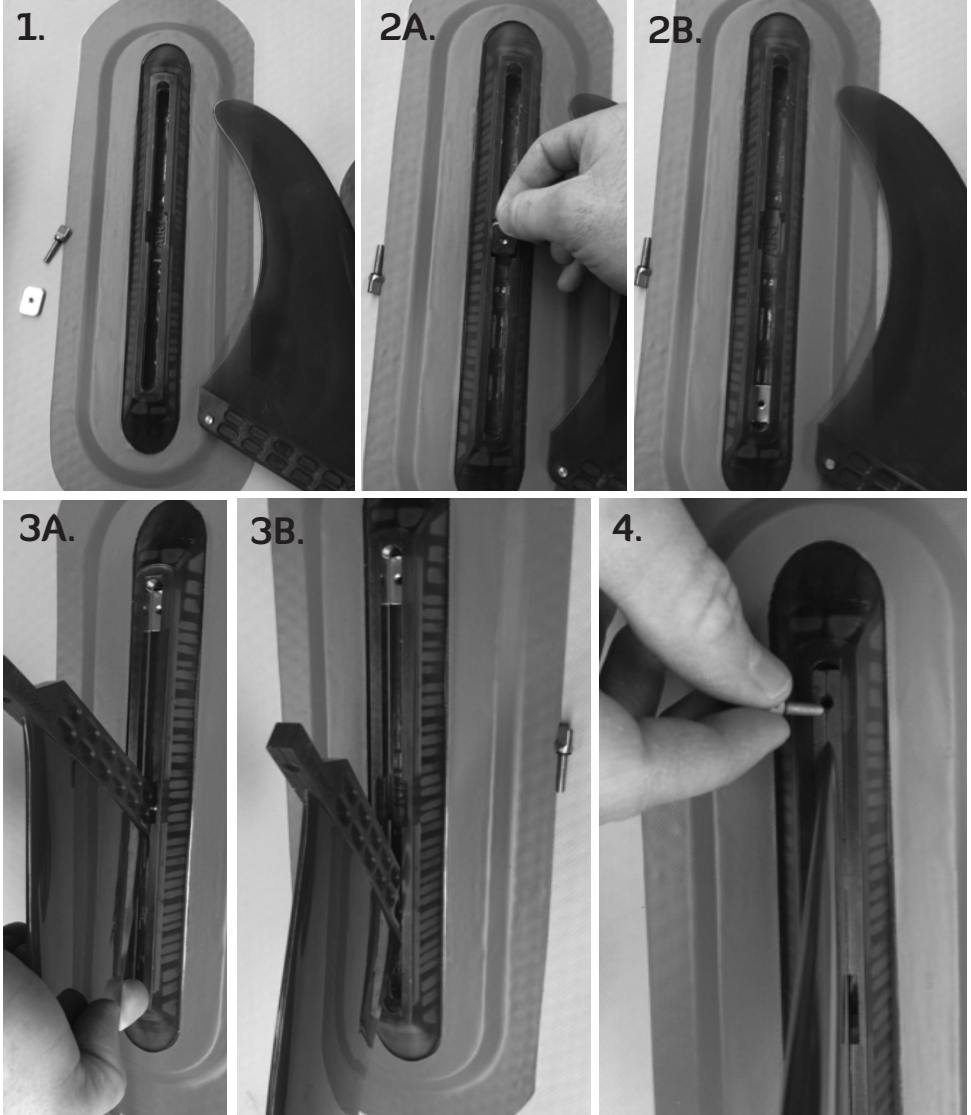
- Get paddleboard instruction, and carry rescue equipment.
- **DO NOT USE A LEASH IN WHITEWATER**
- Always wear a Coast Guard approved Personal Flotation Device (PFD).
- Check all equipment prior to each use for signs of wear or failure.
- Never paddle alone, and do not exceed your paddling ability.
- Do not paddle in high water, flood conditions, or high winds.

*The user of this product acknowledges both an understanding and an assumption of all risks involved in paddle boarding, and paddle sports.*

## How to use the fin

Our fin system for 2015 uses a standard fin box like you would find on most longboards. To install the fin:

1. Take the metal screw off the fin
2. Put the rectangular washer through the center opening and in to the track.
3. Push the attached fin pin through the center opening. Slide the pin up the channel in the fin box.
4. Line the fin hole up with the washer hole. Put the screw in to the fin hole and twist the screw in to the washer below.



## **Warranty**

We stand behind our products and should any issues arise, we will make it right, guaranteed.

All of our inflatable boards are warranted to the original owner against defects in workmanship for a period of 3 years from the date of purchase. Our commercial warranty covers the original commercial owner for defects in workmanship for 1 year from the date of purchase. Our paddles are warranted against defects in workmanship to the original owner for 1 year. If gear is determined to be defective, the gear will be repaired, replaced, or refunded, at our option. This warranty is limited – If you abuse or misuse your gear, or if your product is out of warranty and you encounter a problem, there is no warranty, but please get in touch. We want to help if we can.

Your Hala Inflatable SUP is designed to give you many years of service. Please follow all inflation instructions and warnings carefully.

If you ever have any questions or problems with your Hala Inflatable SUP don't hesitate to contact us. Emails can be sent to SUP@halagear.com.

## **Do's & Don'ts**

To keep your board in good condition and to keep the warranty in place please note of the proper care below:

### **DO**

- + Store your board in the shade when possible—If you have to leave your board in a hot area; let a small amount of air out of your board. Hot air expands, and may cause pressure in your board to go above 15 PSI.
- + When traveling with board inflated—keep in mind that it will gain pressure from heat AND from altitude, i.e. mountain passes.
- + Keep your board's valve closed when the board is deflated near water.
- + Use the bag to transport your board if deflated – the easiest way to damage your board is in transit while it is deflated.

### **DON'T**

- + Drag your board!
- + Use a high-pressure source to fill your board (air compressor). This makes over-inflation very easy. Explosive decompression from over inflation will VOID your warranty.
- + Let water get inside your board – this will damage the internal stitching, and VOID your warranty.
- + Inflate board over 15 PSI.

[www.halagear.com](http://www.halagear.com)  
Steamboat Springs, Colorado