

Exhibition catalogue

Ernabella Arts and Aboriginal Contemporary proudly present

# TJATU-RARA

## WORKING TOGETHER

12 stunning new works by Rachael and Alison Lionel

**Exhibition opens Saturday 23 March 10:00am – 4:00pm**

254 Bronte Road, Waverley, 2024



---

ABORIGINAL CONTEMPORARY

Sisters Rachael and Alison Lionel first came to the art centre in Ernabella as children. They learnt how art can share culture and Country from their mother, Yurpiya, and grandmother, Pantitiji (now deceased) – both acclaimed artists in their own right. The sisters are now passing their knowledge to the next generation of Lionels. *"Our grandmother said to us 'when I'm gone, keep doing this' so we keep doing what she showed us. Now we are showing our children, and one day our grandchildren, what we were taught."*

While Rachael and Alison share a close bond, their painting styles are very distinct. Rachael often works at night, depicting her dreams with an explosive palette. Alison reimagines the nature of the desert in all its swirling energy and beauty. Both are at the vanguard of a new generation of Aboriginal artists, simultaneously pushing the boundaries of contemporary art while honouring the world's oldest continuously living culture.

Tjatu-rara is Aboriginal Contemporary and Ernabella Arts' fourth collaboration with the Lionels, whose work continues to attract attention from collectors and institutions alike. In 2023, one of Rachael's works, featured in this exhibition, was recognised at the prestigious Telstra NATSIA Awards in Darwin.

Please join us for the opening of Tjatu-rara on Saturday, 23 March, from 10:00 am to 4:00 pm at Aboriginal Contemporary.

Warmest *Nichola*



Rachael Lionel



# Rachael Lionel

## **Dust Storm**

Cat No: #95-23

Acrylic on Linen

200cm x 220cm

\$18,500.00





# Alison Lionel

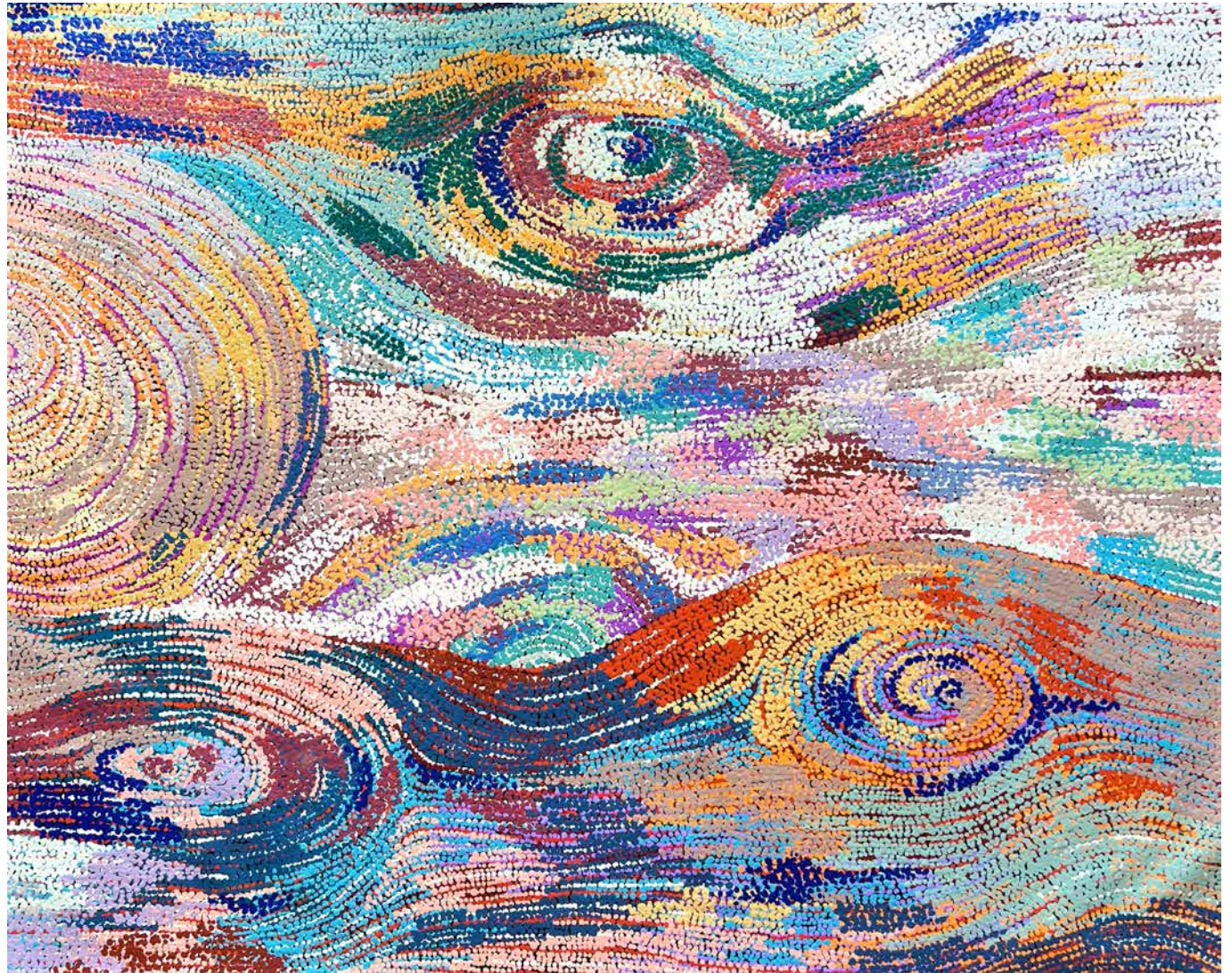
## Tjutirangu Punu – Rainbow Tree

Cat No: #25-24

Acrylic on Linen

150cm x 120cm

\$5,500.00





## Rachael Lionel

### **Kapi Wankanya**

Cat No: #17-24

Acrylic on Linen

151cm x 121cm

\$7,900.00





# Alison Lionel

## **Likara (Bark)**

Cat No: #536-23

Acrylic on Linen

91cm x 152cm

\$4,300.00





# Rachael Lionel

## **Dust Storm**

Cat No: #463-23

Acrylic on Linen

120cm x 149cm

\$7,800.00





## Alison Lionel

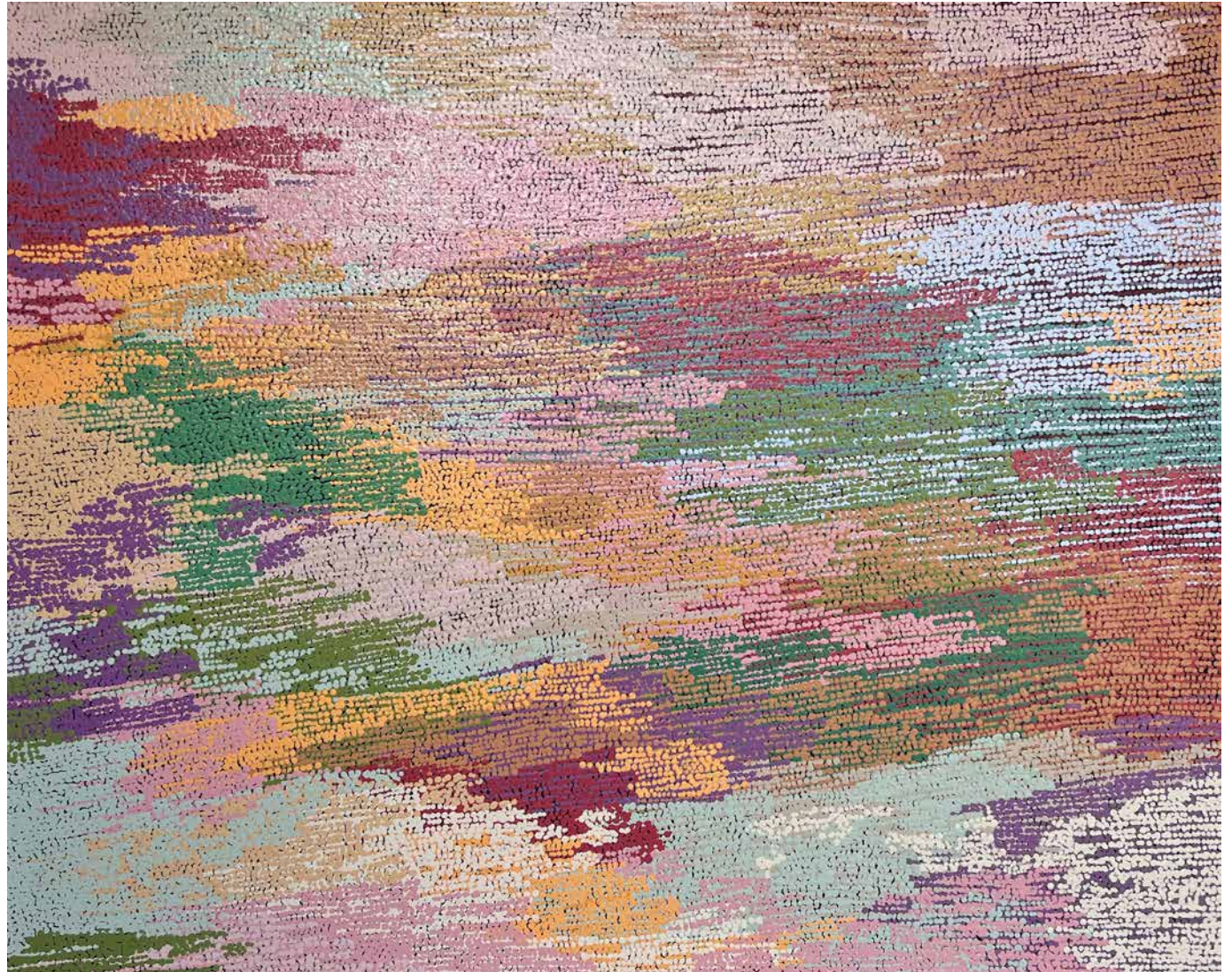
### **Tjutirangu Punu – Rainbow Tree**

Cat No: #386-23

Acrylic on Linen

121cm x 151cm

\$5,500.00





## Rachael Lionel

### Kapi Wankanya

Cat No: #385-23

Acrylic on Linen

124cm x 175cm

\$9,500.00





# Alison Lionel

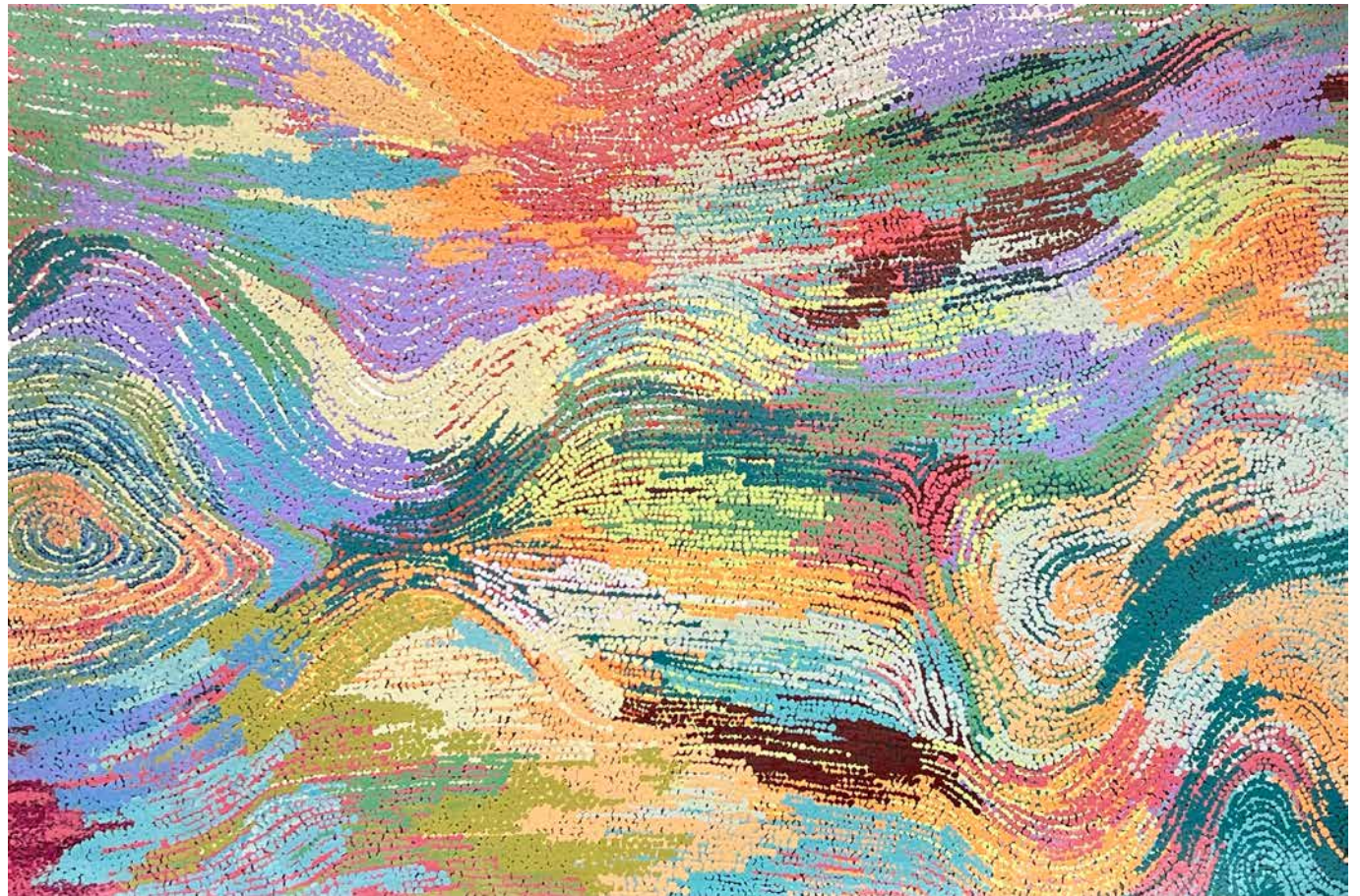
## **Tjutirangu Punu – Rainbow Tree**

Cat No: #468-23

Acrylic on Linen

100cm x 150cm

\$4,600.00





# Rachael Lionel

## **Dust Storm**

Cat No: #570-23

Acrylic on Linen

121cm x 182cm

\$9,600.00





## Alison Lionel

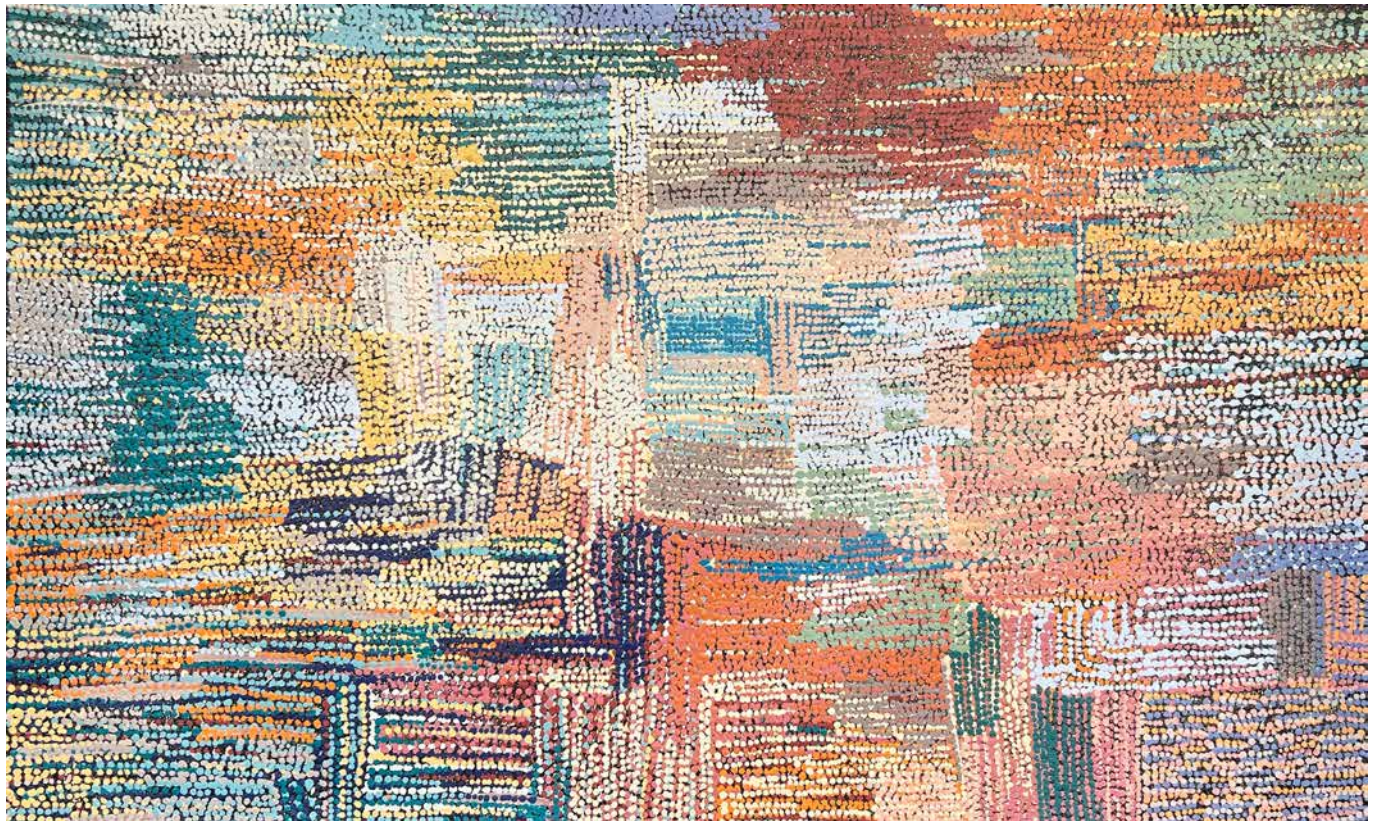
### Tjutirangu Punu – Rainbow Tree

Cat No: #565-23

Acrylic on Linen

90cm x 150cm

\$4,300.00





## Rachael Lionel

### Kapi Wankanya

Cat No: #555-23

Acrylic on Linen

120cm x 200cm

\$10,300.00





# Alison Lionel

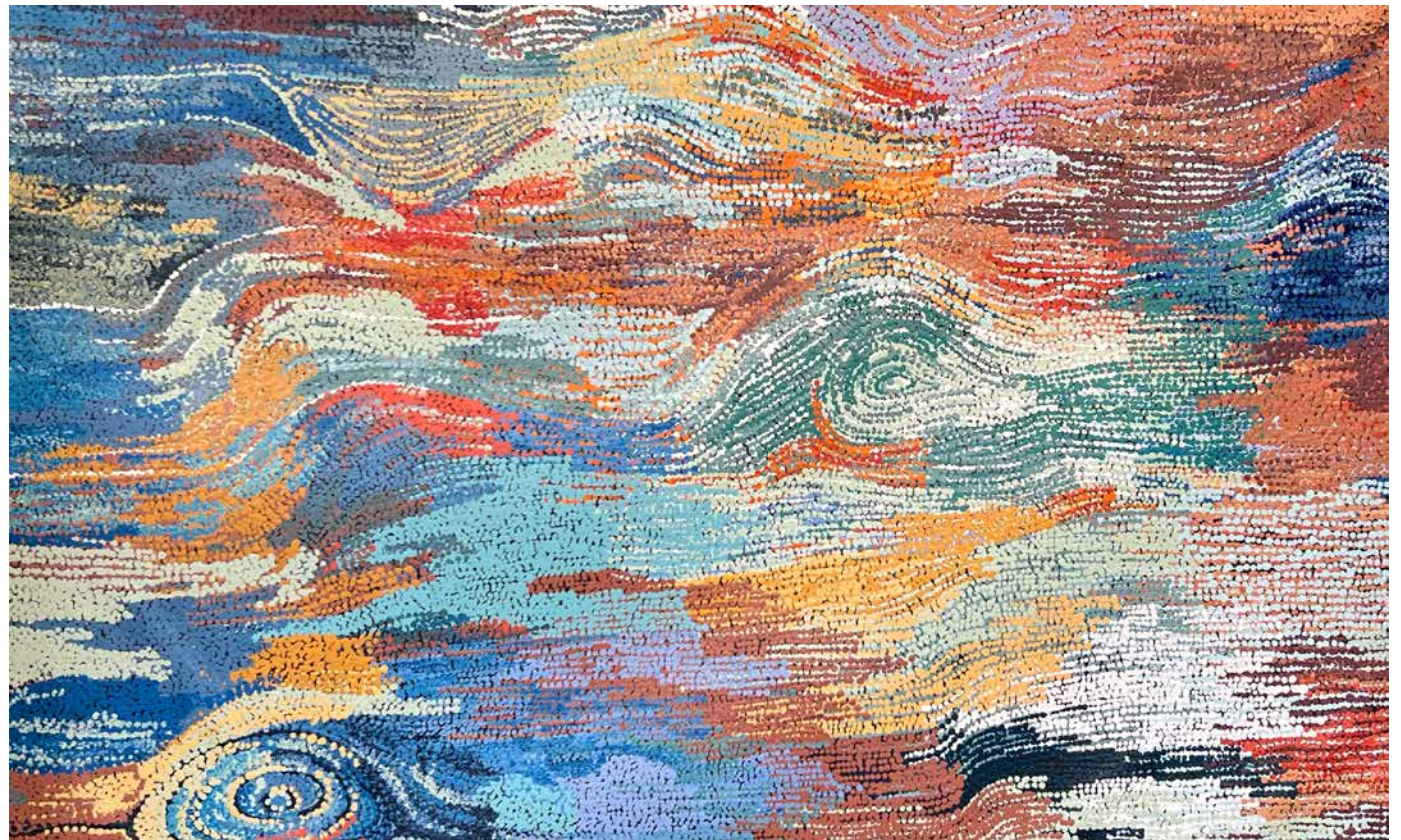
## Tjutirangu Punu – Rainbow Tree

Cat No: #402-23

Acrylic on Linen

92cm x 152cm

\$4,300.00





# TJATU-RARA

## WORKING TOGETHER

Please join us for the opening:

Saturday 23 March 10:00am – 4:00pm  
254 Bronte Road, Waverley, 2024



---

ABORIGINAL CONTEMPORARY

For any enquiries please contact Nichola on 0450 929 183 or [nichola@aboriginalcontemporary.com.au](mailto:nichola@aboriginalcontemporary.com.au)

\*In this catalogue we have endeavoured to capture the colour to the best of our ability however please be aware colour can vary depending on the device you are looking at. Further images are available on request.