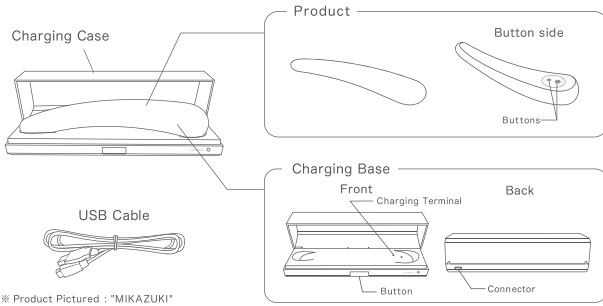
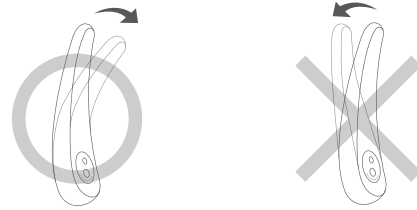


## Product Contents



## iroha's Flexible Structure

This iroha item comes with a unique Flexible Structure to allow the item to gently bend to accommodate the varying shapes and sizes of female pleasure zones.



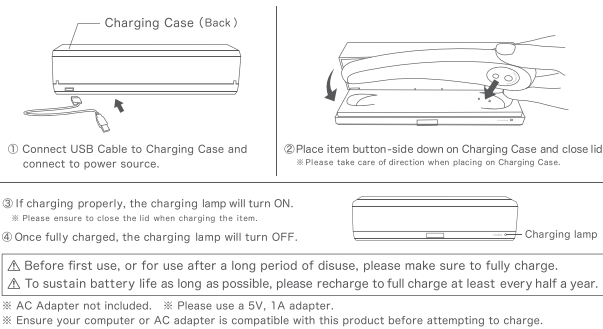
The item will bend towards the buttons.

Do not bend in the opposite direction.

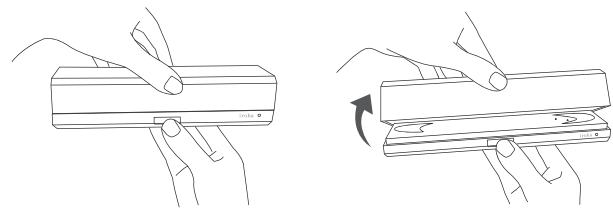
⚠ Please do not use excessive force on the item - this may damage the product.

English 1-2

## Charging



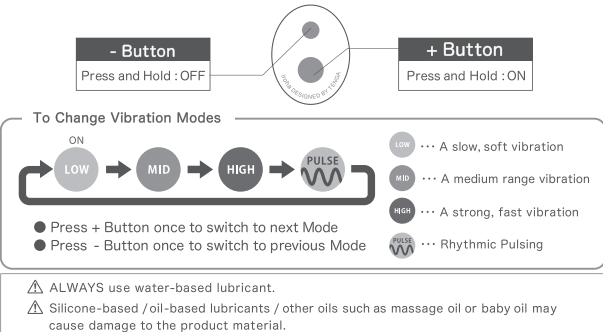
## Charging Case



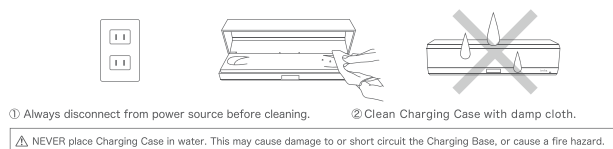
⚠ Please do not use excessive force when opening the case - this may damage the case.

English 3-4

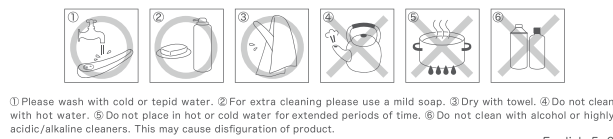
## Directions for use



## Directions for cleaning



## Caution



English 5-6

## Directions for storage

Store in a cool, dry place away from direct sunlight. Heat and sunlight may cause malfunction, disfiguration and fire hazards.

## Troubleshooting

❓ If the product doesn't turn on.

- Has the product been charged?
- Is the USB Cable properly connected to both Charging Case and power source?

❓ If the product stops working even after charging.

- Has the product been charged properly?
- Please deplete the battery completely until the product stops, and fully charge. There may be occasions when doing this multiple times will solve the problem.
- If the problem persists, it may be that the battery life has ended.

❓ If the product won't charge.

- Note that charging will begin only once the Charging Case lid has been closed.
- Is the USB Cable properly connected to both Charging Case and power source?
- Is the product placed properly (facing the correct direction) on the Charging Case?

## Product Specifications

● Product	
Product Name and Product Code	iroha Pleasure Item for Women MIKAZUKI / hmf-01, MINAMO / hmf-02
Recharging Time Approx. 120 minutes	
Continuous Running Time Approx. 90 minutes	
Dimensions / Weight	MIKAZUKI : Approx L172 x W38 x H27 mm / Approx 110g MINAMO : Approx L172 x W38 x H28.5 mm / Approx 120g
Materials	Product: Silicone, ABS, PC, Lithium-ion Battery Charging Case: ABS
Waterproof up to 50cm	
● USB Cable	
USB Cable Length	1.2m
Country of manufacture	China

English 7-8

## Safety Instructions

Thank you for purchasing an iroha brand product. For the safe and long-term use of this product please read all instructions carefully and store this manual in a safe place. ALWAYS use in accordance to the following instructions. TENGA Co., Ltd. can not be held liable for any use outside of that stated in this user manual.

### ⚠ DANGER

To avoid risk of injury, dangerous electric shock, burns or fire hazards before, during and after use, as well as malfunction of product.

This is product is intended for use to assist massage of body or stimulate erogenous zones, DO NOT use for any other purpose or in any other manner than that stated within this user manual.

- This is NOT a medical device.
- This is NOT a children's toy. Please keep out of reach of children.
- ALWAYS use water-based lubricant.
- Please store in a cool, dry place away from direct sunlight.
- DO NOT plug in any device with wet hands.
- DO NOT use under blankets or other sealed areas, or any place with high temperatures and humidity to prevent the risk of overheating and possible fire hazards, electric hazards or injury.

- DO NOT drop or expose to extreme force as this may cause damage.
- DO NOT place heavy items on top of, nor place hot items near all items.
- DO NOT place any other metal items on the Charging Case.
- Please do not use on or near open flames or in extreme heat conditions.
- DO NOT leave product unattended when product is switched ON.
- ALWAYS turn product OFF after use.
- DO NOT leave the product submerged in water after cleaning.
- DO NOT wet the Charging Case.
- ALWAYS disconnect the cable from power source when cleaning.
- ALWAYS disconnect the cable from power source when not in use.
- DO NOT pull cable to unplug from Charging Case or power source - ALWAYS pull while holding cable end.
- DO NOT excessively bend or pull USB Cable or wrap it around the Charging Case.
- DO NOT use if USB Cable connection or USB Plug connection feel loose or become damaged.
- Ensure your computer or AC adapter is compatible with this product before attempting to charge.
- ALWAYS place product on Charging Case facing correct direction.
- DO NOT charge while the product is turned ON.
- DO NOT disassemble or attempt to customize product in any way.
- DO NOT use if product is malfunctioning. Turn OFF immediately.
- Please occasionally remove dust from USB Plug and USB Cable, as excessive build-up of dust in these areas may cause a fire hazard.

English 9-10

- Wash before first use, and after every use.
- Do not clean with alcohol or highly acidic/alkaline cleaners. This may cause disfiguration of product.

### ⚠ Medical Warning

- If you have a pace-maker or other electric medical instrument, are pregnant, are being treated for any medical instance, or otherwise have any concerns regarding your health please consult a doctor before use of this product.
- DO NOT use on any damaged, irritated skin or any other bodily areas requiring medical attention.
- DO NOT share this item with others to avoid transmission of disease or the passing of pathogens.
- DO NOT use on one spot of the body for over 15 minutes.
- DO NOT use if in the following conditions for health concerns:
  - Under extreme stress or tiredness.
  - Under the influence of alcohol.
- This product is not designed for use by those with physical or mental disabilities. Persons in such conditions should consult a medical professional or a person responsible for their safety before use.
- DO NOT use product on upper neck or head.
- DO NOT use product on or make contact with eyes or eyelids.
- If you feel unwell during use of product, please stop use immediately and seek medical attention.

## Product Warranty

This product is covered by Product Warranty for ONE (1) YEAR from Original Date of Purchase against defects due to fault of production or materials. If you discover a defect during Product Warranty period, TENGA Co., Ltd. will provide a replacement, free of charge, at its discretion. Product Warranty covers working parts of the Product and does NOT cover the following:

- If you fail to show both this User Manual and Original Purchase Receipt.
- Abnormal usage methods, or usage methods deemed inappropriate or otherwise mentioned as invalidating Warranty in this User Manual.
- Damages made during delivery of product, moving of product or accidental damages.
- Damages caused by natural disasters or use at wrong voltage.
- Cosmetic damage due to fair use of Product.

## Regarding Disposal

Regarding disposal of Waste Electrical and Electronic Equipment (WEEE). The symbol below of a crossed-out dustbin indicates that this item should be taken to an appropriate collection point for proper disposal. Please do not dispose with household waste.



English 11-12

## ONE YEAR PRODUCT WARRANTY

Full Name:	
Address:	
Telephone Number:	
WARRANTY PERIOD ONE (1) YEAR	
Date of Original Purchase	
Purchase Location (Store Name & Address or URL)	

※ Please attach Receipt of Original Purchase.

Contact: global@tenga.co.jp

English 13-14