

DIVERSE CHOICES

Infinite Possibilities



MODEL X



www.kalerm.com



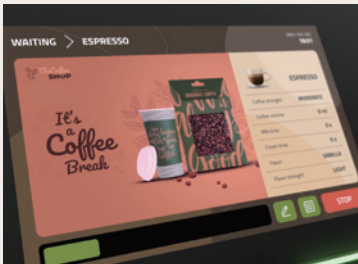
TWIN TOPPINGS + TWIN BEAN HOPPERS

Model X offers you multiple options with different combination of bean hoppers and topping hoppers, enabling you the freedom of choice to not only use one or two different beans, but also soluble powders, such as milk powder and chocolate powder. Fresh milk is also an option.



DIVERSE BEVERAGE CHOICES

More than 30 drinks can be enjoyed at the touch of a button. The beverage choices range from Espresso, Ristretto, Americano, Long Coffee, to Cappuccino, Latte, Macchiato, Flat White, hot milk, hot cream, and hot water, green tea, black tea. Drinks with chocolate powder - Mocha, Milk Chocolate, and hot chocolate are also available.



INTERACTIVE 10" TOUCH DISPLAY

The 10" color touch display with Android system is easy to operate. It offers personalization and advertisement options which brings an intelligent mode of human-computer interaction. The variable lighting around the display suits any ambience, while flashing lights remind you to clean or maintain your appliance.



MULTI-SCENARIO MODE

Three application scenarios - Standard, Professional and Self-service are preinstalled. Whether in office, hotel, cafe or convenient store, it's quite easy to choose your favorite user interface and enjoy the customized operation experience.



HOT WATER OUTLET

A separate hot water outlet makes it easy and efficient to prepare various tea beverages.



STEAM WAND (OPTIONAL)

You can use the optional steam wand to DIY your textured milk foam.



ROBUST BREWING UNIT

The brewing unit with up to 16g capacity guarantees a stable pressure for a high level of Espresso extraction, cup after cup.



ACCURATE GRINDING

The highly efficient flat burr with precise powder control delivers uniform thickness for every grinding, so as to get the best flavor from the beans.



FRESH MILK SYSTEM

The optimized milk system is able to mix the right quantities of steam, milk and air, creating delicate milk foam at a desirable temperature.



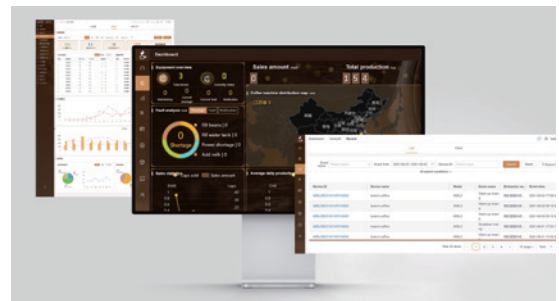
AUTOMATIC MILK CLEANING SYSTEM

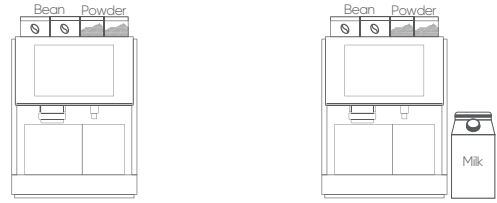
Automatic cleaning of all milk pipes (with milk cooler) and milk frother makes the maintenance easier and keeps the system hygienic.



IOT CLOUD (OPTIONAL)

Kalerm IoT Cloud offers you the complete package: track and analyze live data, monitor machine status and beverage consumption, manage maintenance, adjust the recipes and personalize the videos remotely.





Model Options

		X400	X460
Recommended daily output		100-150 cups	
Cups per hour according to DIN 18873-2	Espresso/2 espressi	105 /1 50 cups	
	Cafe creme/2 cafe cremes	75 / 90 cups	75 / 90 cups
	Cappuccino /2 cappuccinos	105 cups	105 cups
	Mocha	120 cups	
	Hot water	102 cups	
Options	Bean hopper capacity	2*500g	2*500g
	Topping hopper capacity	2*500g	2*500g
	Fresh milk	No	Yes
Power	Rated power	220-240V / 2300W	
Dimensions	D*W*H (Depth*width*height)	560mmx380mmx540mm	
Weight	Net weight	28kg	28kg
Beverages	Ristretto, Espresso, Lungo, Coffee Crema, Americano, Americano L, Coffee Jug, Double Ristretto, Double Espresso, Macchiato, Cappuccino, Flat White, Café Latte, Latte Macchiato, Double Macchiato, Double Cappuccino, Double Flat White, Double Café Latte, Double Latte Macchiato, Hot Milk, Hot Milk Foam, Mocha, Milk Chocolate, Green Tea, Black Tea, Hot Water		

Technical Data

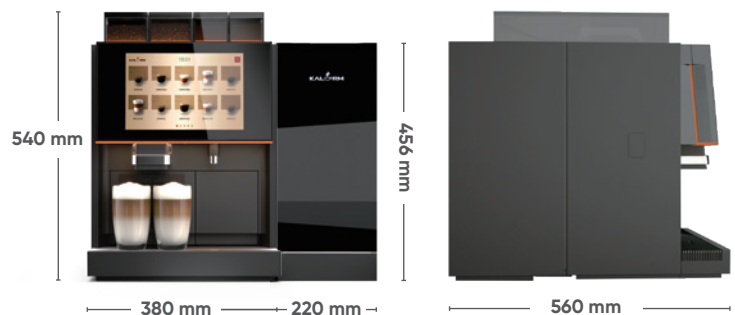
Screen	10.1" Android Screen
Espresso brewer capacity	5~16g
Boiler capacity	0.7L
Water tank volume	4L
Drip tray capacity	2L
Waste bin full (counter)	45 portions
Coffee spout height	Level 1=100mm level 2=160mm
Water supply	Fixed water + Barrelled water + Tank water
Color	Black/Sliver/golden

Optional

- Water filter
- Drain hose set
- Steam wand
- Grounds through kit

Accessories

- Milk cooler
- Syrup



Add: Building 10C Suchun Industrial Square, No.428 Xinglong Street, SIP Suzhou 215126, Jiangsu, China

Tel: +86 512 6818 0758 ext. 225

Email: export@kalerm.com