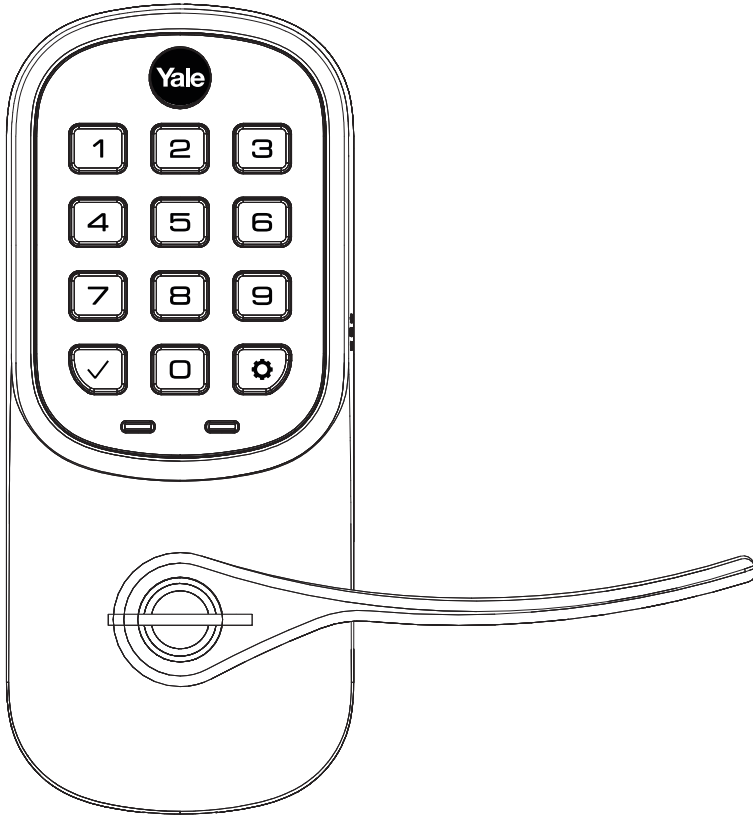




Yale Assure Lever®

Keypad (YRL216) and Key-Free Keypad (YRL236)

Installation and Programming Instructions



Before you begin

DOWNLOAD THE BILT APP

for step-by-step installation instructions & to register your product

BILT

Available on the App Store and Google Play.

! WARNING

This product can expose you to lead which is known to the state of California to cause cancer and birth defects or other reproductive harm. For more information go to www.P65warnings.ca.gov.

x4
#7 wood & #8-32 machine x 20mm Combination screws

x2
#8-32 x 5/16" Machine screws

x2
M4 x 22mm Pan head machine screws

Installation Guide Envelope (Includes this manual and door checker with template)

Battery Cover Key

Strike Plate

Latch

AA Alkaline Batteries

Cylinder (YRL216) OR Key-Free Cylinder (YRL236)

Keys (YRL216)

Battery Cover

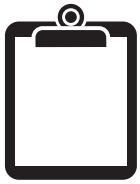
Optional Smart Module*

Interior Lock

Interior Mounting Plate

*Yale Smart Module is not included with NR models.

FAILURE TO FOLLOW THESE INSTRUCTIONS COULD RESULT IN DAMAGE TO THE PRODUCT AND VOID THE FACTORY WARRANTY



Preparing to Install

Tools Needed



Standard
Phillips Head
Screwdriver

Tools necessary only for new doors or adjusting existing prep.



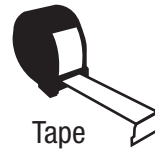
Drill



Wood Mortise
Chisel



Pencil



Tape
Measure



Utility Knife



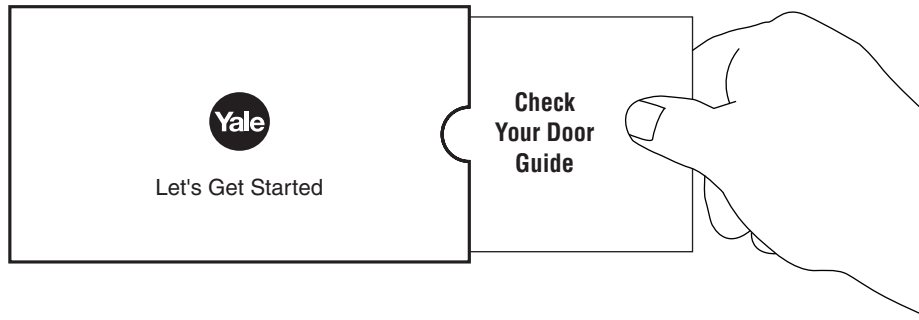
Level



Check Door Measurements and Make Adjustments If Needed

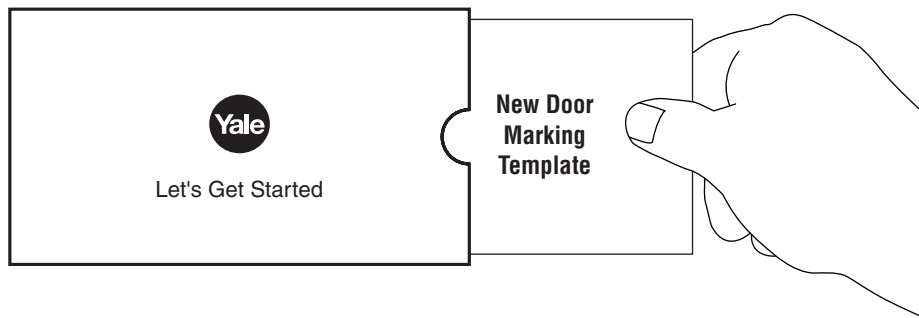
Door Checker

Use door checker from installation guide envelope to verify your door measurements and make any needed adjustments.



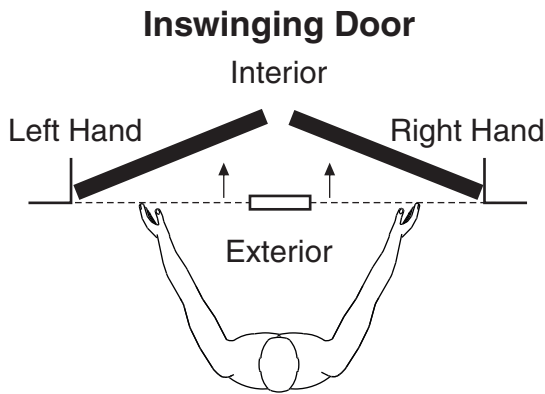
New Door Marking Template

With door checker, use template from installation guide envelope to prep a new door that has not been predrilled for hardware.

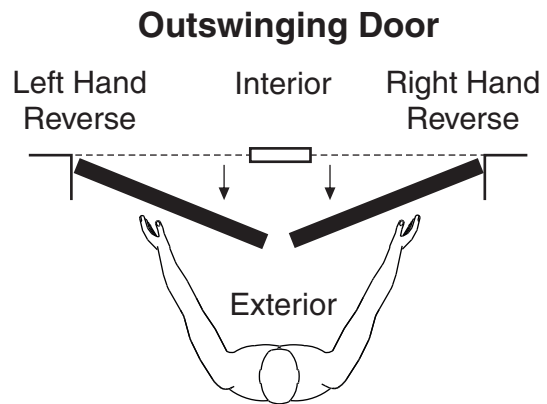




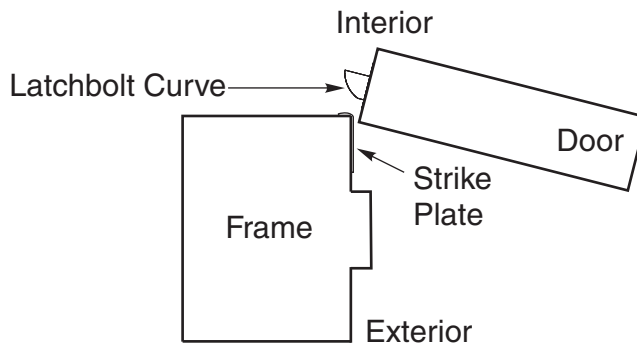
Determining Door Handing



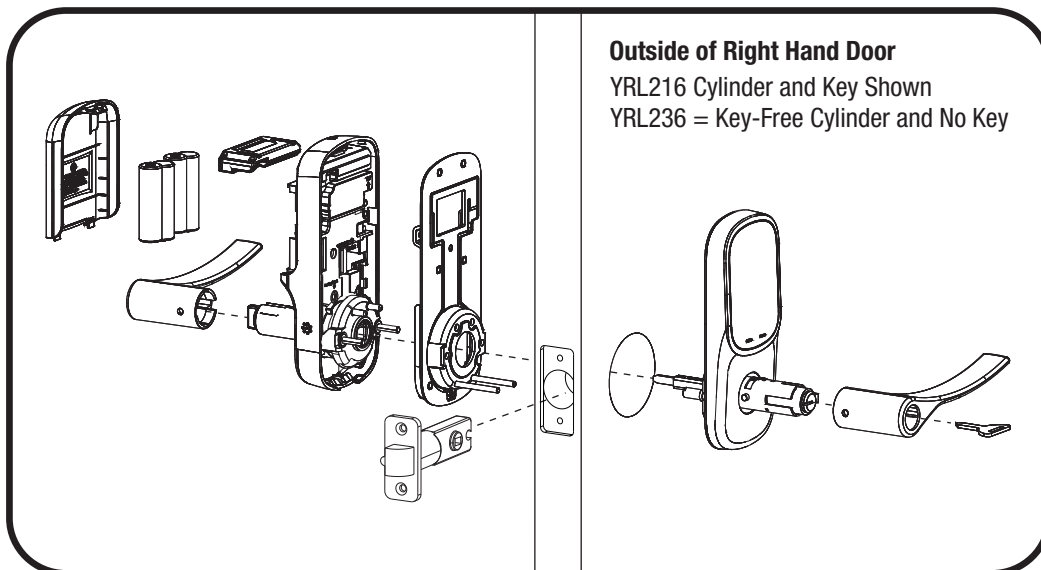
Face a door swinging open away from you.
If it swings open to the right, it is a right hand door. If it swings open to the left, it is a left hand door.

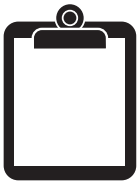


Face a door swinging open toward you.
If it swings open to the right, it is a right hand reverse door. If it swings opens to the left, it is a left hand reverse door.



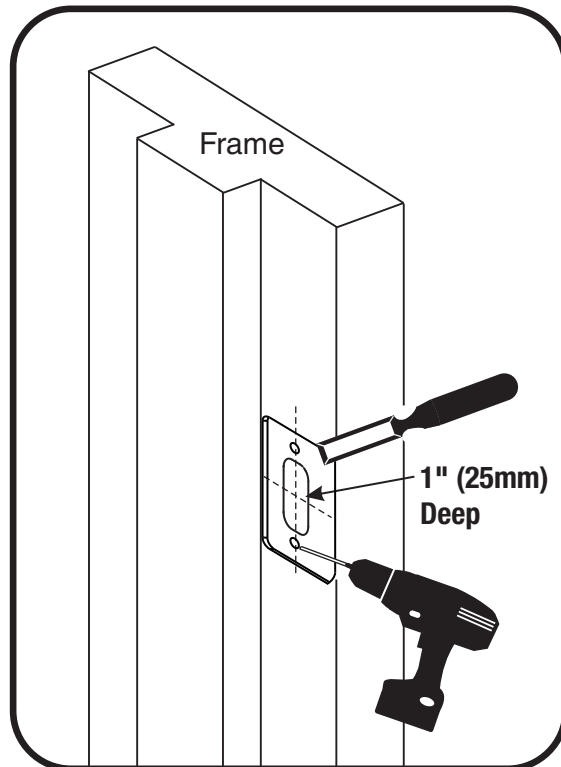
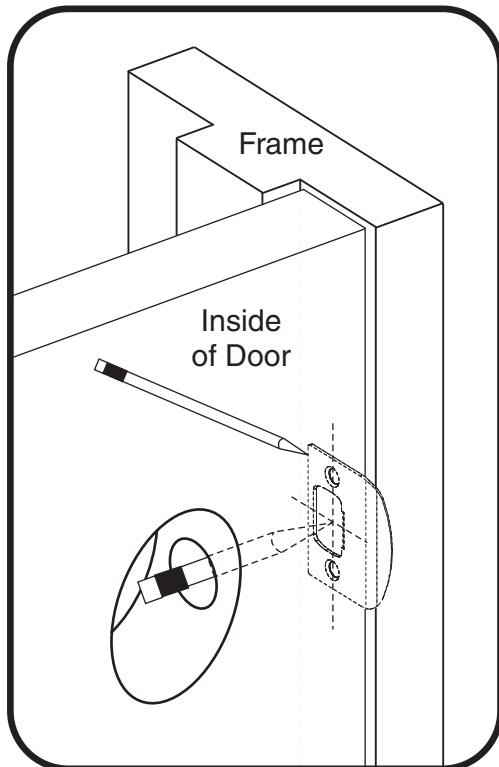
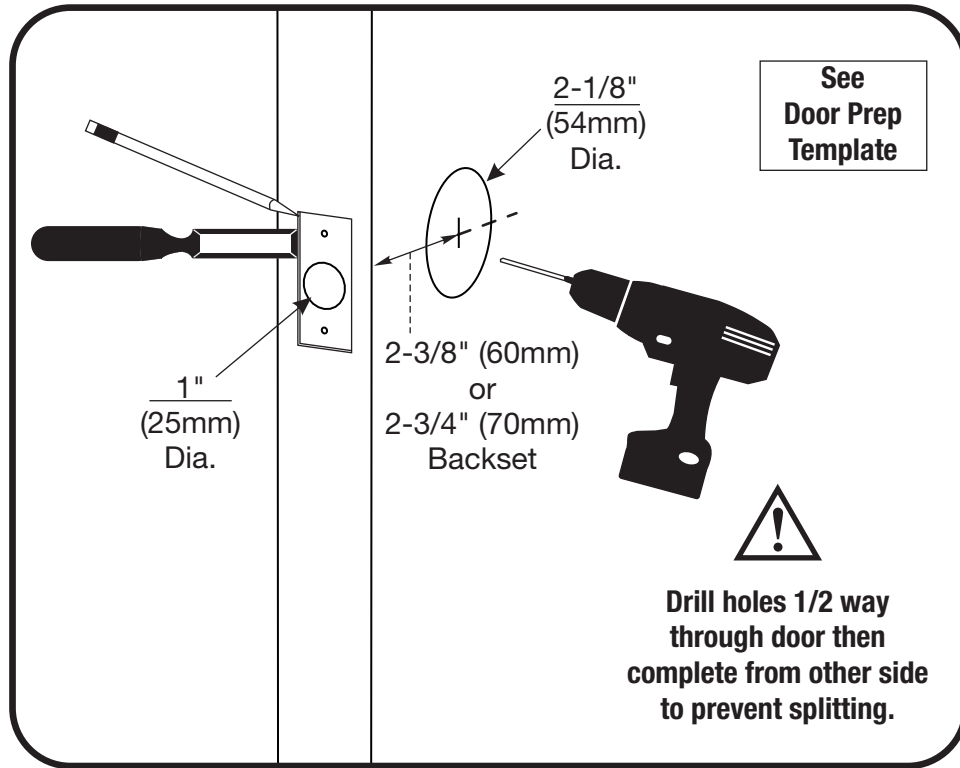
Curve of latchbolt must contact strike plate first.





Preparing Door & Frame

Necessary for new doors or adjusting existing prep.

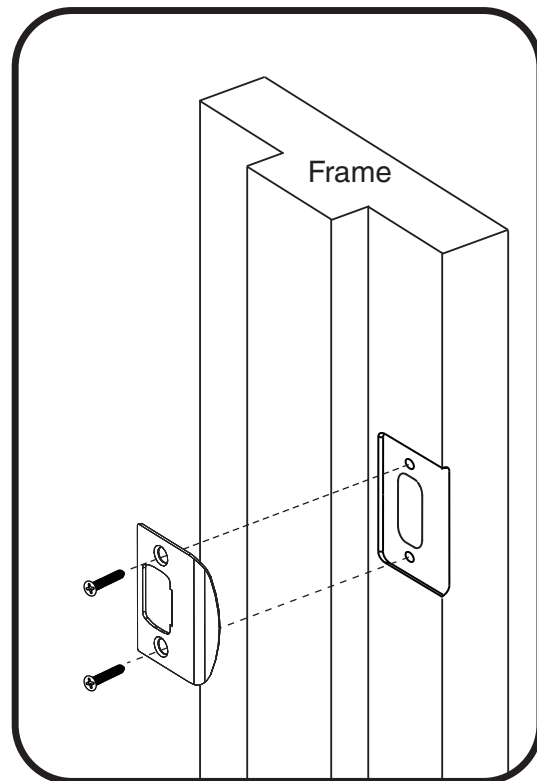
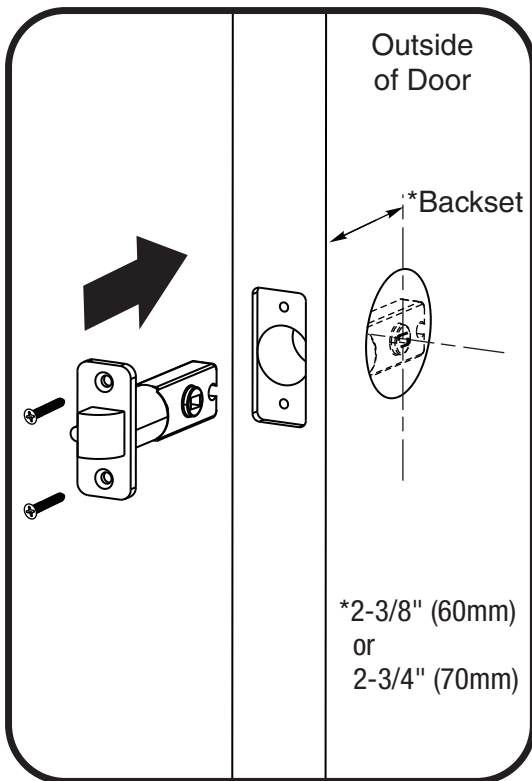
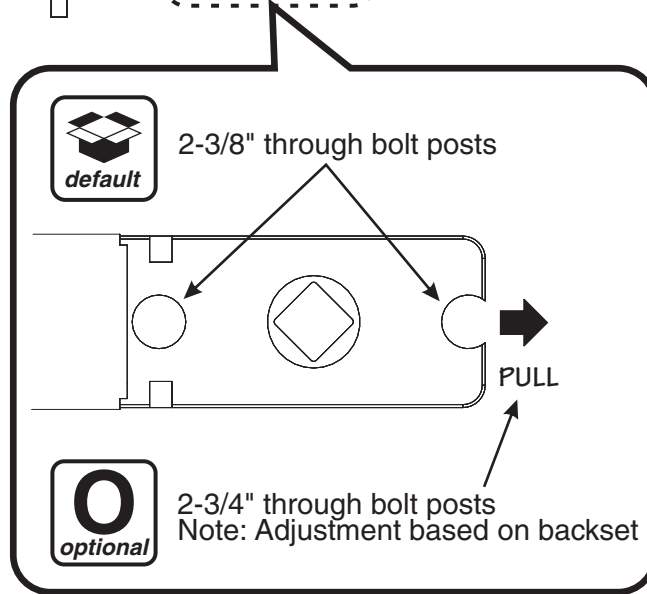
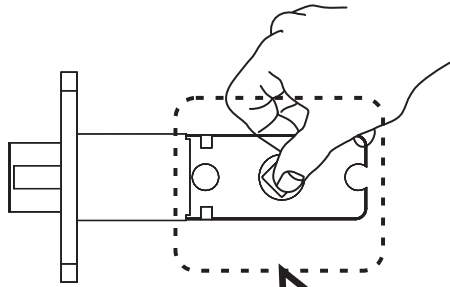


1

Installing Latch & Strike Plate Right Hand Installation Shown

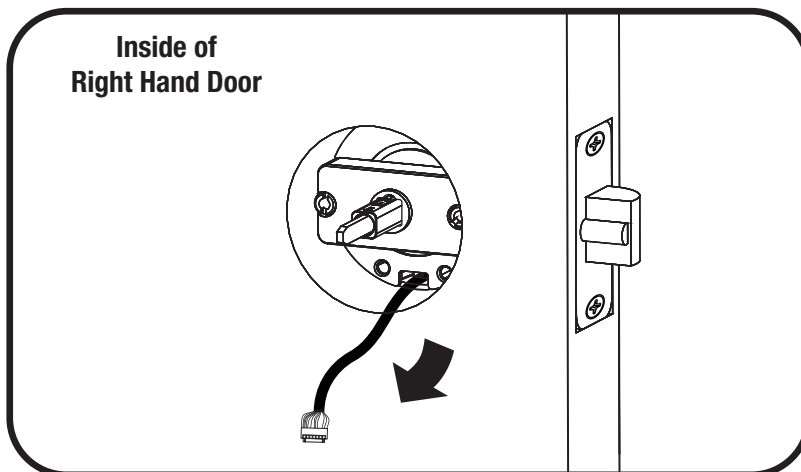
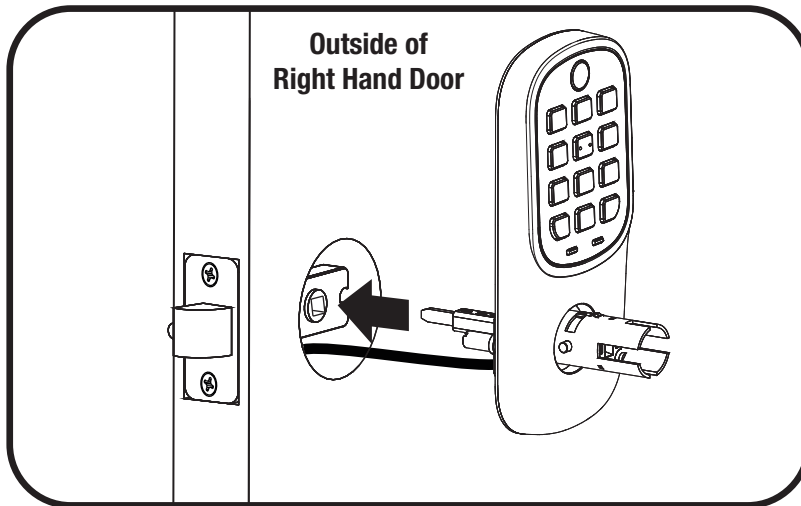
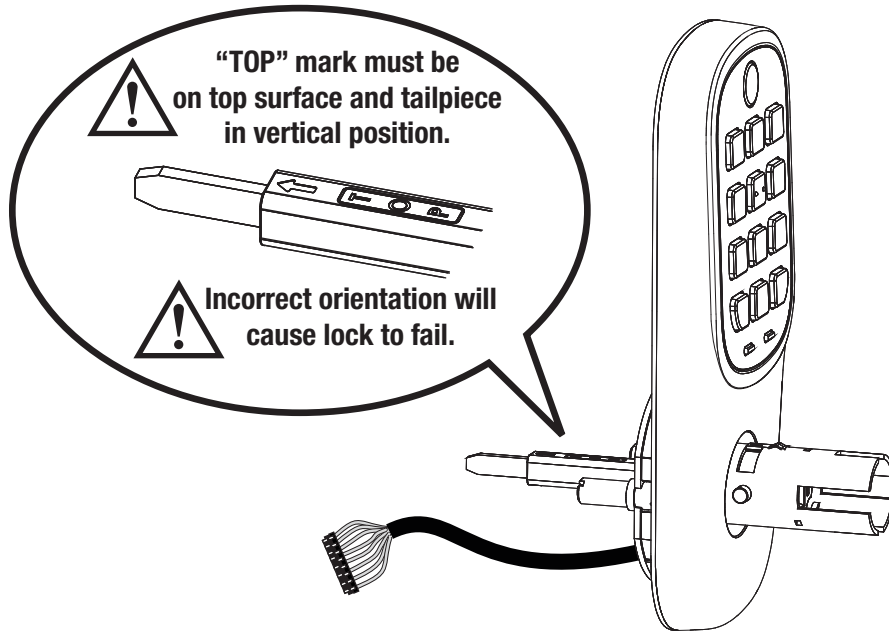


x4



2

Installing Keypad Right Hand Installation Shown

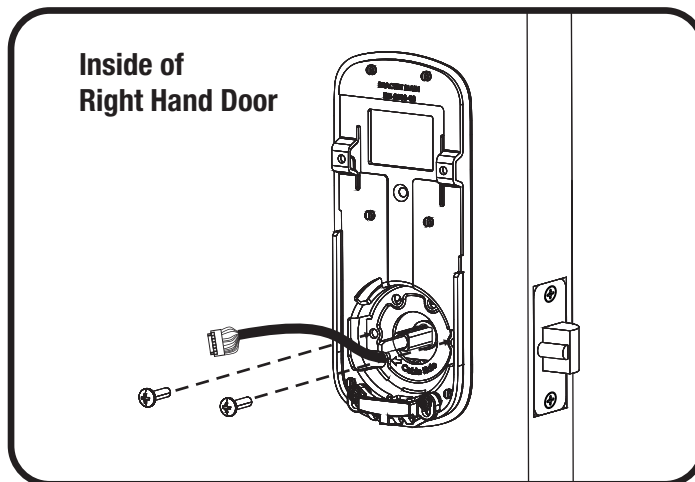
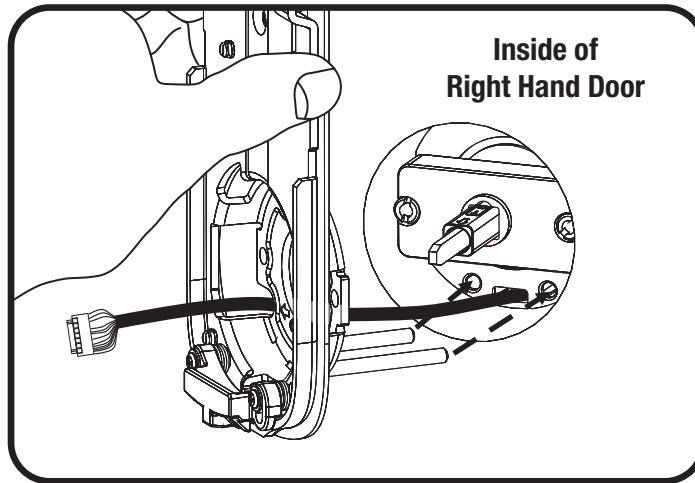
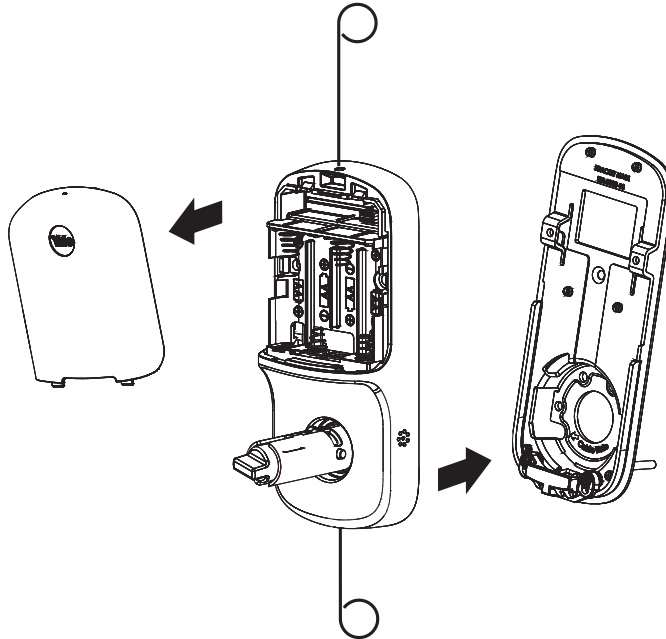


3

Installing Interior Mounting Plate Right Hand Installation Shown

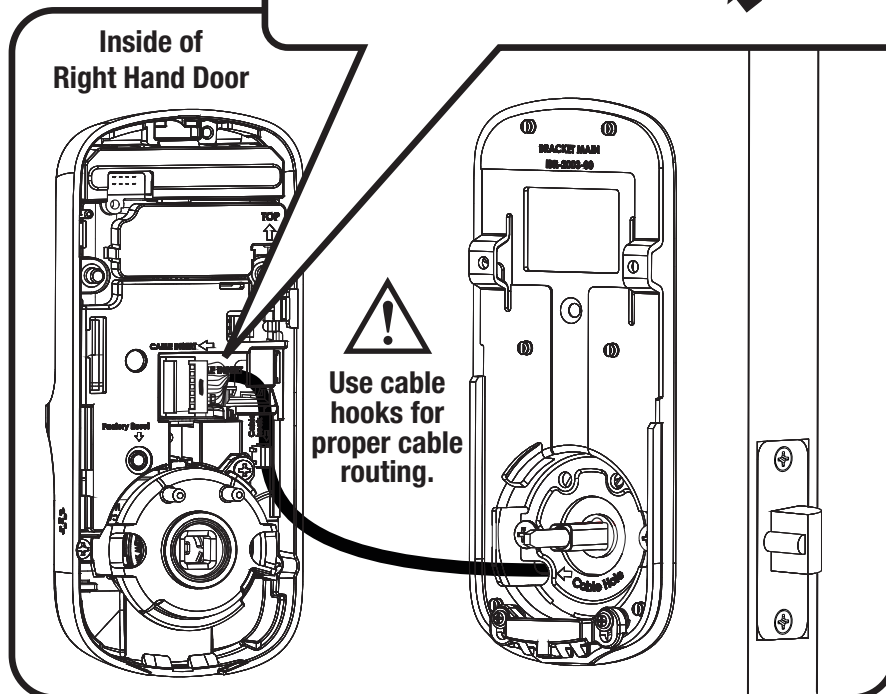
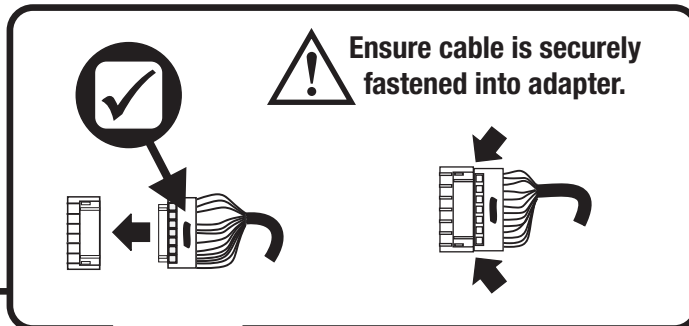
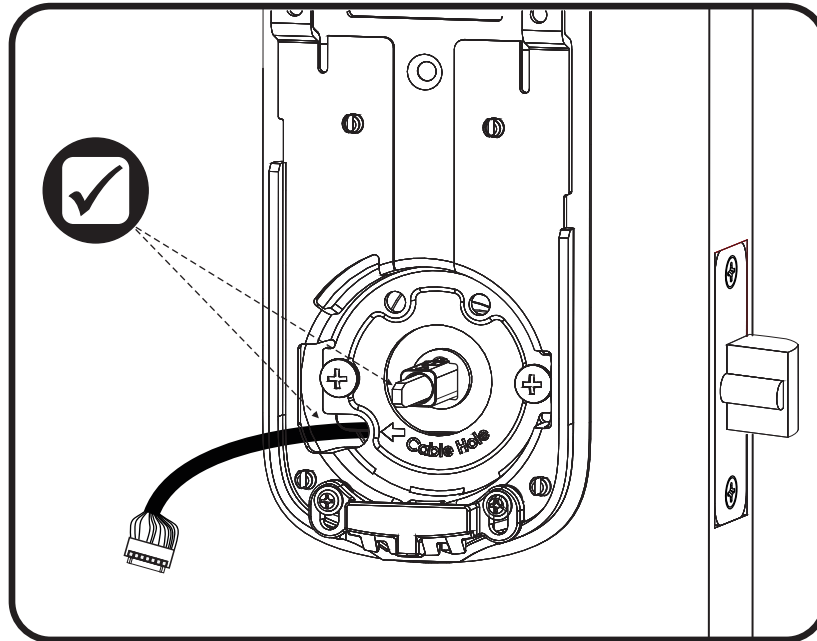


x2



4

Attaching the Cable Assembly Right Hand Installation Shown

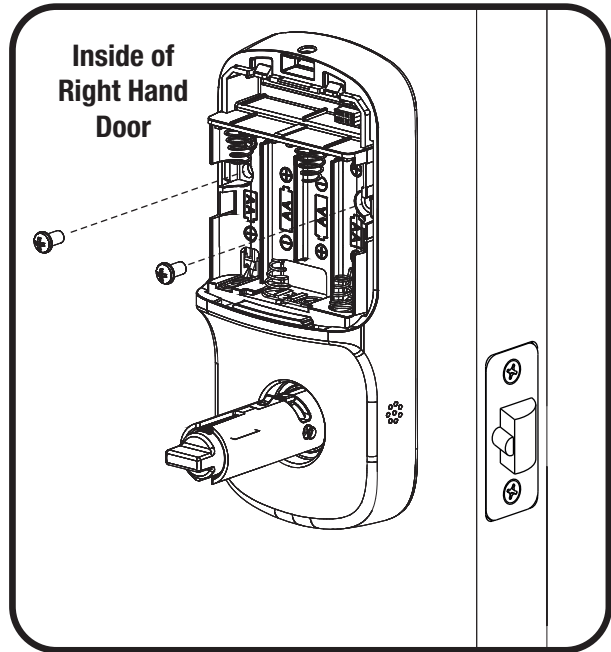
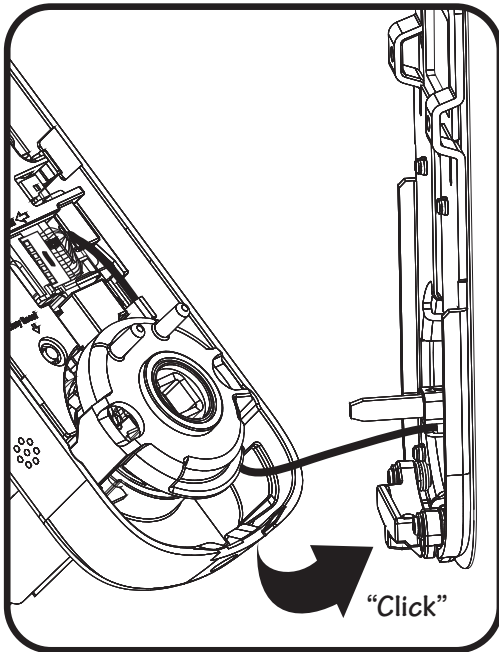
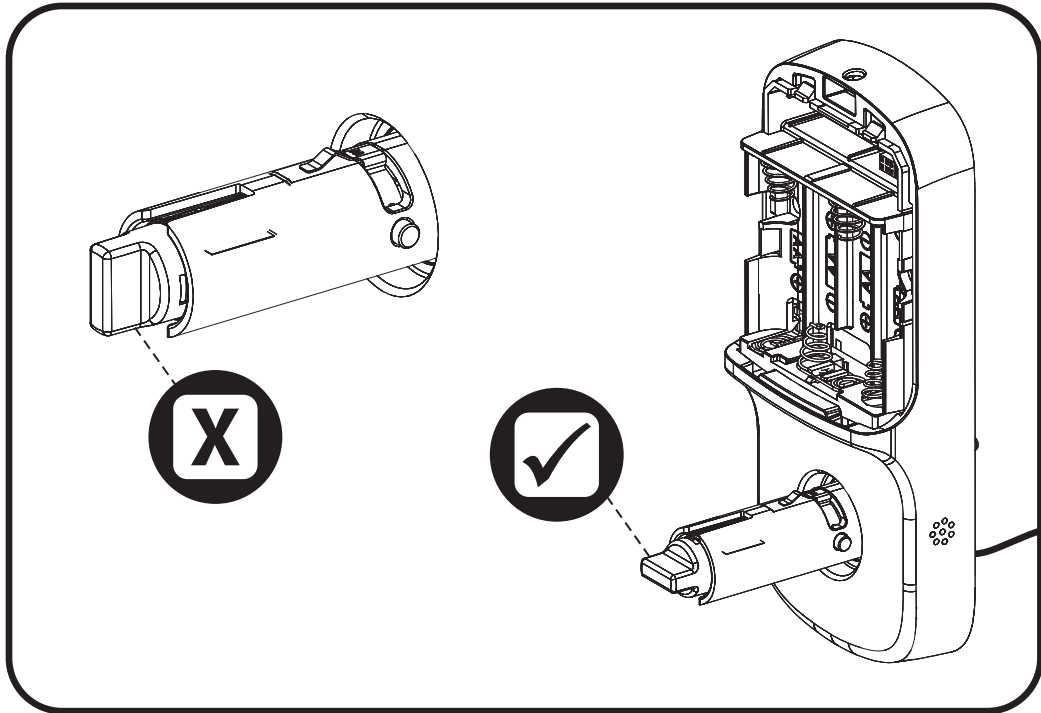


5

Installing Interior Lock Right Hand Installation Shown

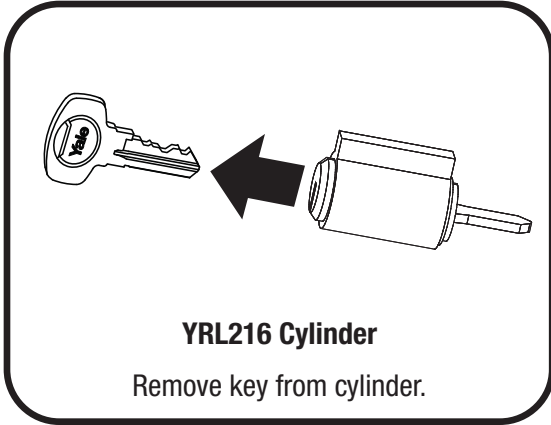


X2

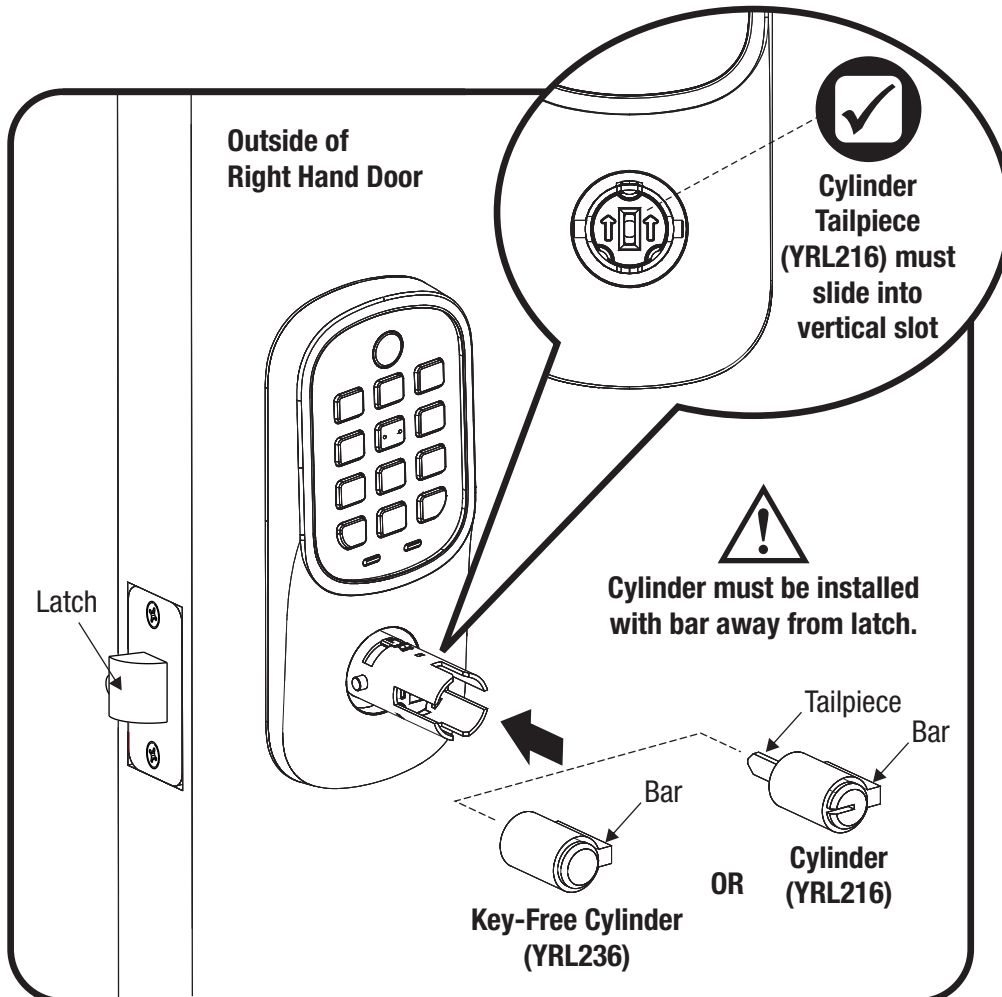


6

Installing Exterior Cylinder (YRL216) or Key-Free Cylinder (YRL236)

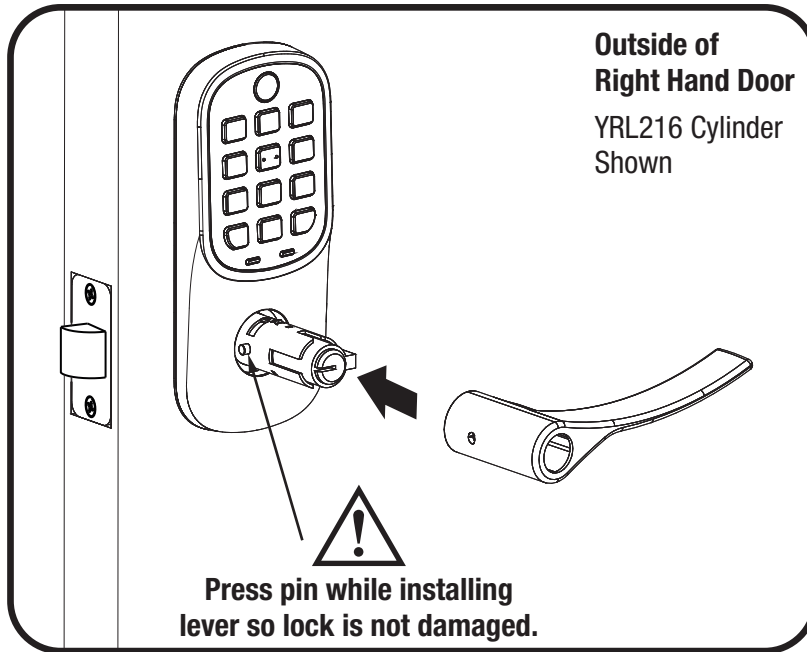


OR



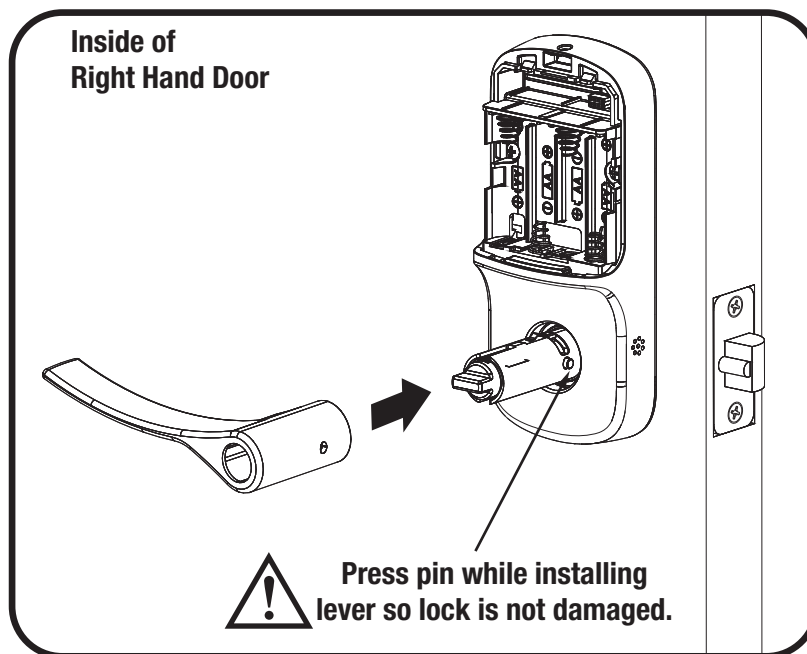
7

Installing Exterior Lever



8

Installing Interior Lever

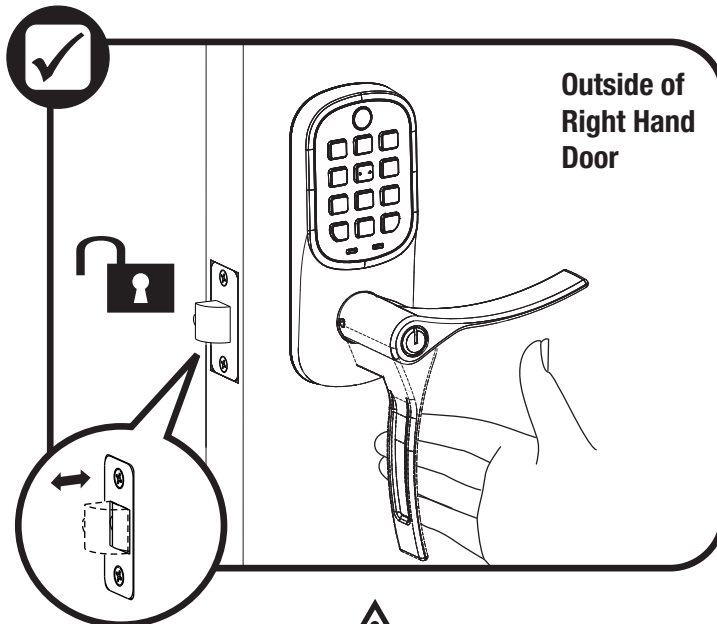
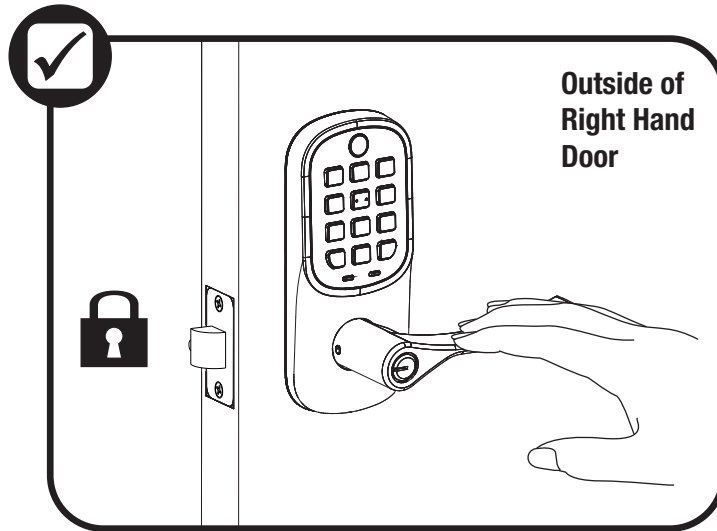
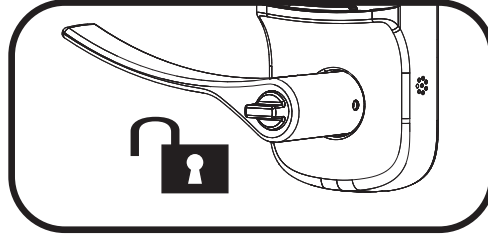
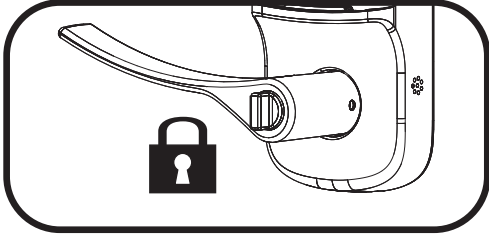




Testing Thumbturn Operation



Test with door open.



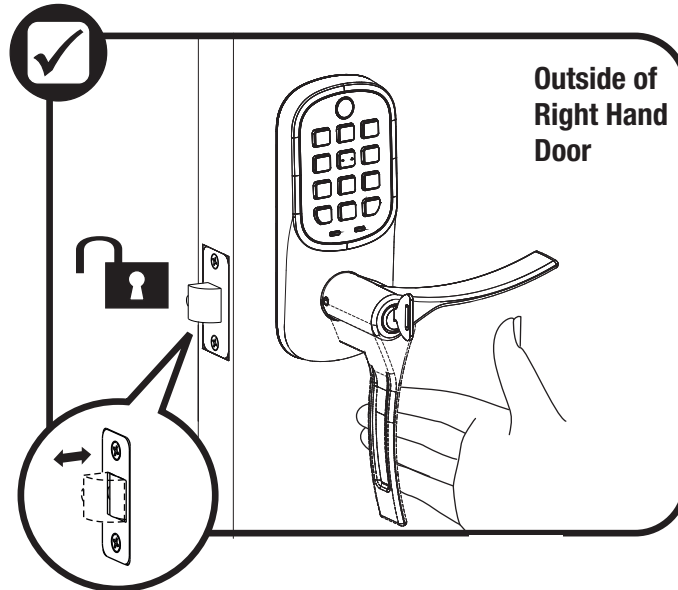
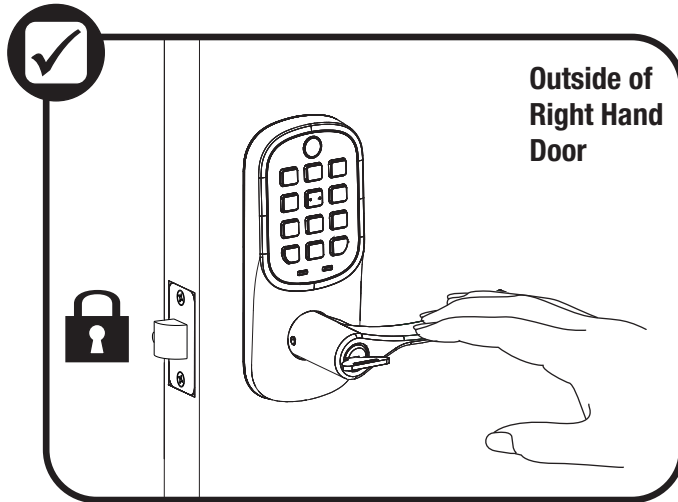
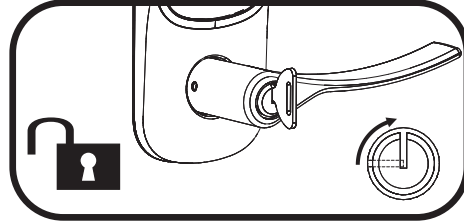
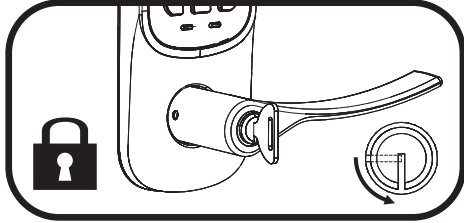
Test thumbturn and both levers in locked and unlocked positions. If operation fails, check installation beginning with Step 2 and refer to Hardware Troubleshooting.



Testing Key Operation (YRL216)



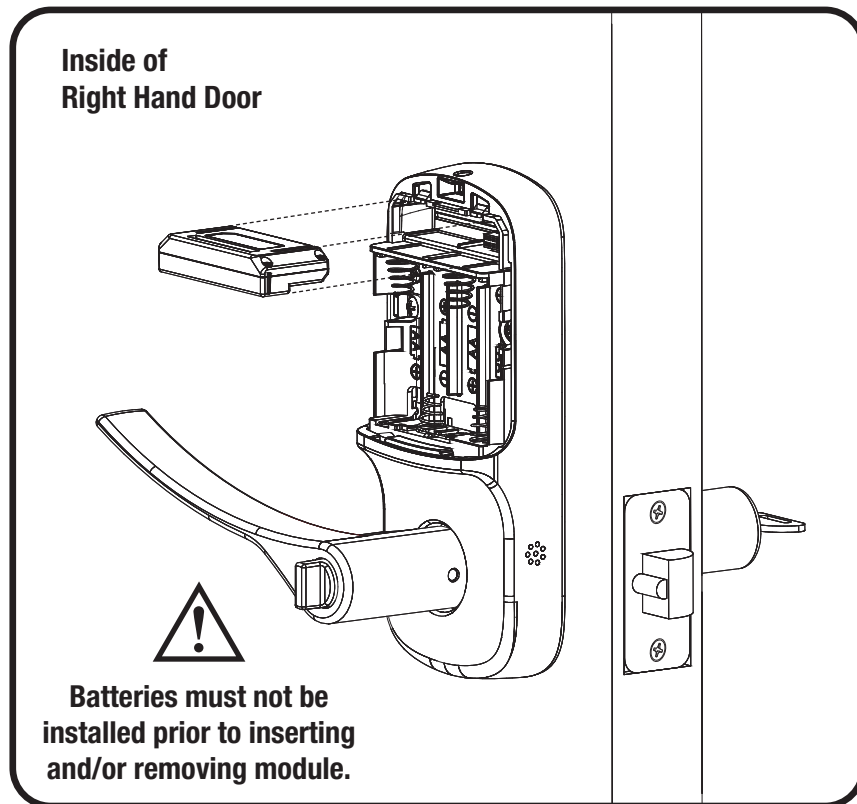
Test with door open.



If key operation test fails, check installation beginning with Step 6.

9

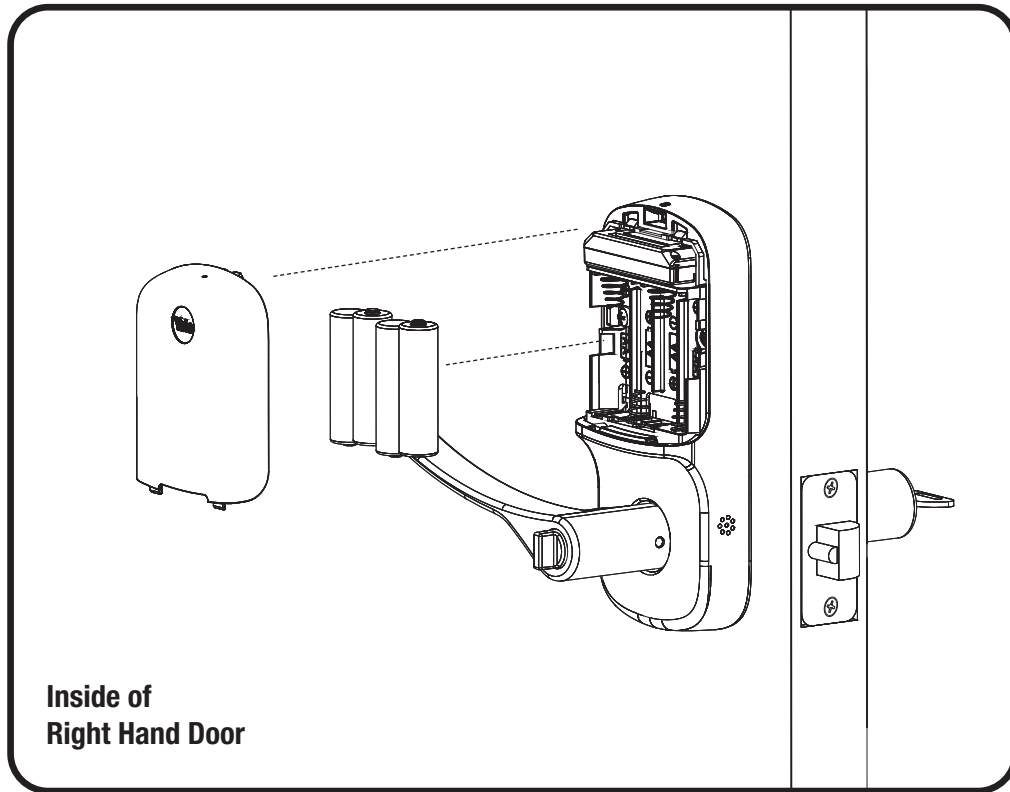
Installing Smart Module (if included)



NOTE: If a Smart module was included with your lock, it is in a separate box with additional module installation instructions.

10

Installing Batteries & Cover



Congratulations, you've installed the Yale Assure Lever®
Keypad (YRL216) or Key-Free Keypad (YRL236)!
Using Your Lock instructions will help
you customize your lock.

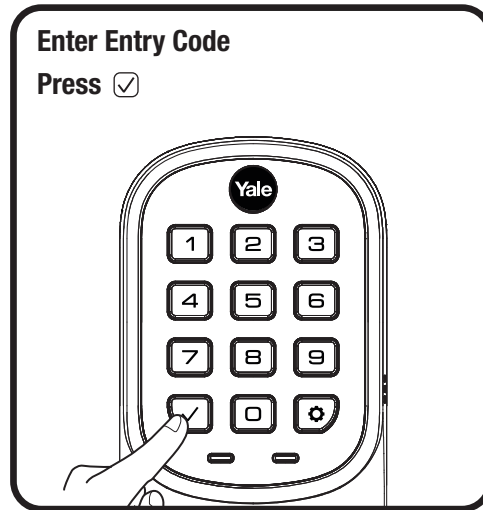


Testing Keypad Operation



Test with door open.

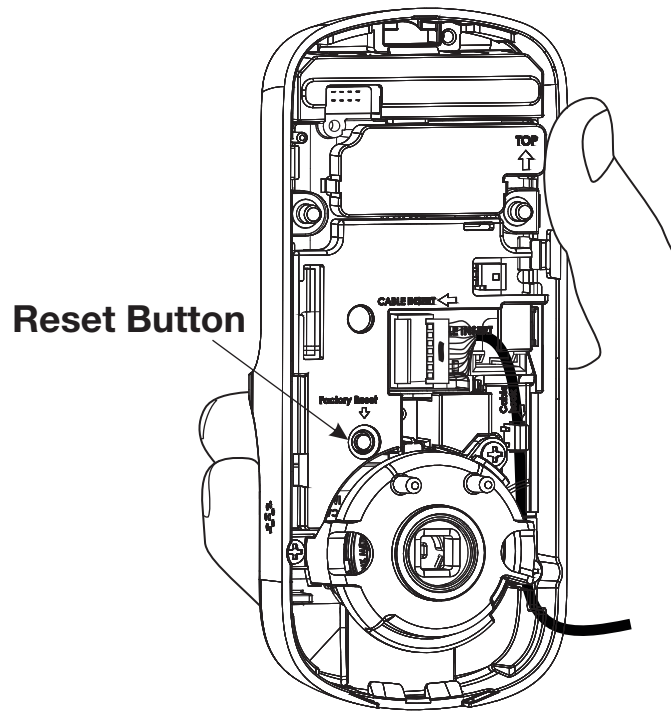
A Master Entry Code must be created upon installation or after resetting the lock to factory default. Programming and use of lock is not possible until this step has been successfully completed. See ① of Using Your Lock instructions below.



If keypad operation test fails, check installation beginning with Step 2.

Resetting Lock to Factory Default

Interior Lock



When resetting the lock, all user codes, including the Master Entry Code*, are deleted. All programming features are reset to original default settings. See “Setting Definitions”.

1. Remove the battery cover and batteries.
2. Remove the interior lock to access the reset button.
3. The reset button (see image above) is marked.
4. Re-insert 3 batteries and hold the reset button for 3 seconds.
5. While still holding the reset button, insert the 4th battery, and hold the reset button for an additional 3 seconds.
6. Release the reset button.
7. Re-install the interior lock onto the door.

*Upon reset, Master Entry Code creation is the only option available and must be performed prior to any other programming of the lock.

Hardware Troubleshooting

Cycle lock in both the locked and unlocked positions. If problems are found:

| |
|----------------------------------------------------------------------------------------------------------------------------------------------------------------------------------------------------------------------------------------------------------------------------------------------------------------------------------------------------------------|
| Tailpiece and spindle will not mate and fit into the interior escutcheon |
| <ul style="list-style-type: none">a. Ensure that your door is between 1-3/8" and 1-3/4" thickb. Ensure that the square shaped spindle has "Top" writing and arrow facing upwardsc. Place the tailpiece in the vertical positiond. Verify that the thumbturn is in the horizontal (unlocked) position |
| Thumbturn does not rotate electronically or physically |
| <ul style="list-style-type: none">a. Verify that inside of the lock is properly seated on the mounting bracketb. Ensure that the square shaped spindle has "Top" writing and arrow facing upwardsc. Place the tailpiece in the vertical positiond. Verify that the thumbturn is in the horizontal (unlocked) position |
| I'm getting an alert when I try to lock or unlock the door electronically |
| <ul style="list-style-type: none">a. Do not turn or depress the lever during operation, this could cause a jam alarmb. Check that thumbturn does not have anything preventing it from physically rotatingc. Verify that you can rotate thumbturn freely |
| My lock is not making any sound when I push buttons |
| <ul style="list-style-type: none">a. Use the programming tree in the manual to verify that Audio is enabledb. If Audio is enabled, ensure that the white cable that connects the keypad to the interior of the lock is not pinched or broken |
| When rotating the thumbturn I hear noise |
| <ul style="list-style-type: none">a. A little bit of noise is normal when operating the thumbturnb. If cranking, grinding or clicking occurs please verify your installation |
| The locking pins will not retract when I try to install the levers |
| <ul style="list-style-type: none">a. If the thumbturn is in vertical (locked) position, rotate the thumbturn to the horizontal (unlocked) position and it will retract |

Changing Lock: Replacing Cylinder (YRL216)

1. To Remove Cylinder:

See installation Steps 6 and 7. Reverse appropriate actions to remove the exterior lever handle and cylinder.

2. To Install New Cylinder:

A. Follow appropriate actions of installation Steps 6 and 7 to replace the cylinder and exterior lever handle.

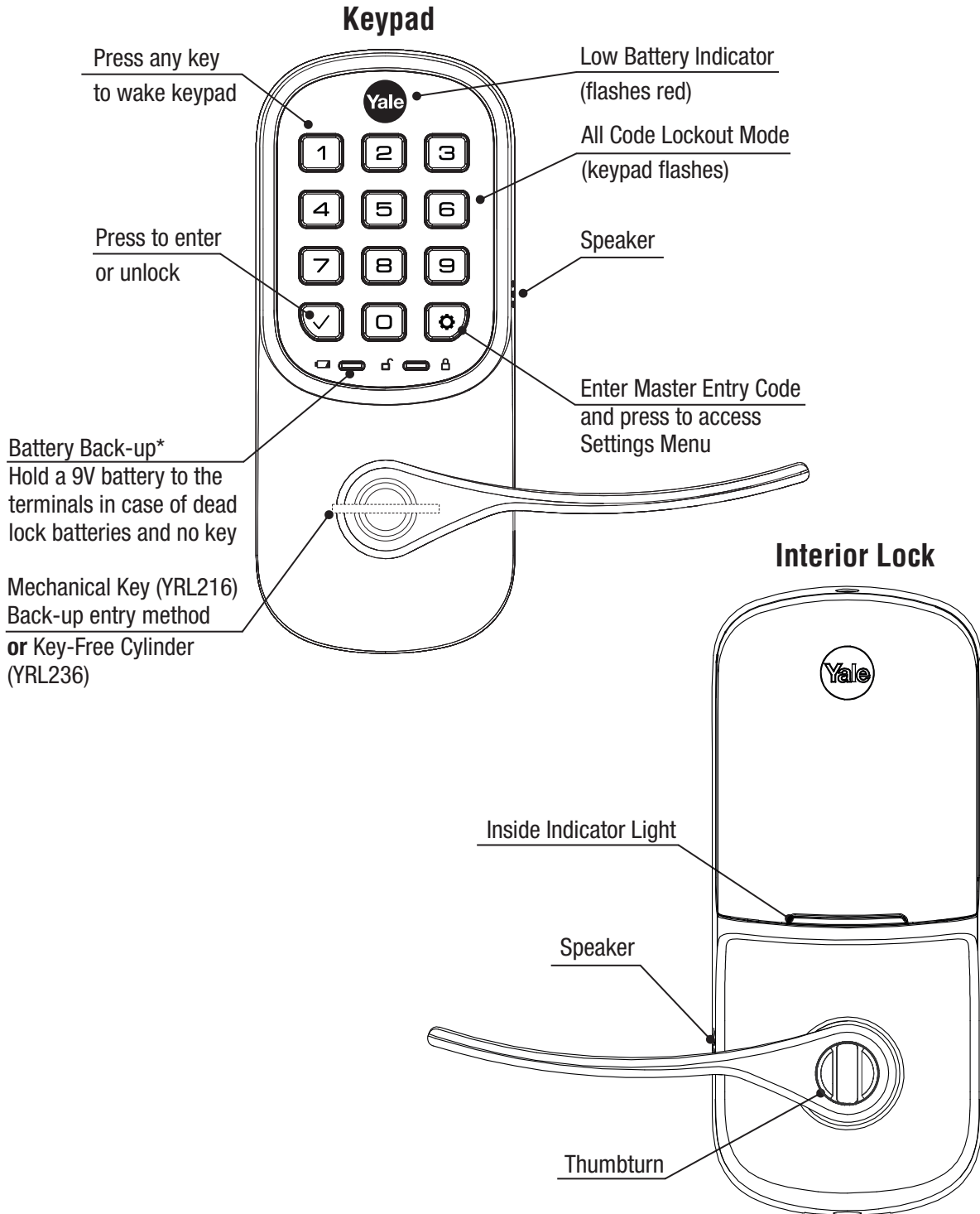
B. Test operation of new cylinder and key by following "Testing Operation".

Setting Definitions

| Settings | Default Setting | Definition |
|------------------------|---------------------------|----------------------------------------------------------------------------------------------------------------------------------------------------------------------------------------------------------------------------------------------------------------------------------------------------|
| Master Entry Code | Creation <i>required*</i> | The Master Entry Code is used for programming and for feature settings. It must be created prior to programming the lock. The Master Code will also operate (unlock/lock) the lock. |
| All Code Lockout Mode | Disabled | This feature is enabled by the Master Entry Code. When enabled, it restricts all Entry Code access except Master. When attempting to enter a code while the lock is in All Code Lockout mode, the keypad flashes 8 times and the lock beeps 3 times as well. |
| Audio Mode | Enabled | The audio setting for Entry Code verification is set to enabled (1) by default; otherwise it can be set to disabled (3) for quiet areas. |
| Auto Re-lock | Disabled | After a successful code entry or manual unlock with the key (YRL216), the lock will automatically re-lock after each unlock in an effort to keep your home secure. This feature is optional, and can be turned off. In the ON mode, the lock will automatically re-lock after thirty (30) seconds. |
| Inside Indicator Light | Disabled (Off) | Located on the inside lock. Shows active status (Locked) of lock and can be enabled or disabled in the Advanced Lock Settings (Main Menu selection #3). |
| One Touch Locking | Enabled | When the latch is retracted, activating the keypad will extend the latch (during Auto Re-lock duration or when Auto Re-lock is disabled). When One-Touch Re-lock is not in use (disabled), any valid Entry Code will re-lock the lock. |
| Shutdown Time | 60 Seconds | The Lock will shutdown (flashing keypad) for sixty (60) seconds and not allow operation after the Wrong Code Entry limit (5 attempts) has been met. |
| Wrong Code Entry Limit | 5 Times | After five (5) unsuccessful attempts at entering a valid Entry Code, the lock will shut down and not allow operation for sixty (60) seconds. |

***The Master Entry Code must be created prior to any other programming of the lock.**

Using Your Lock



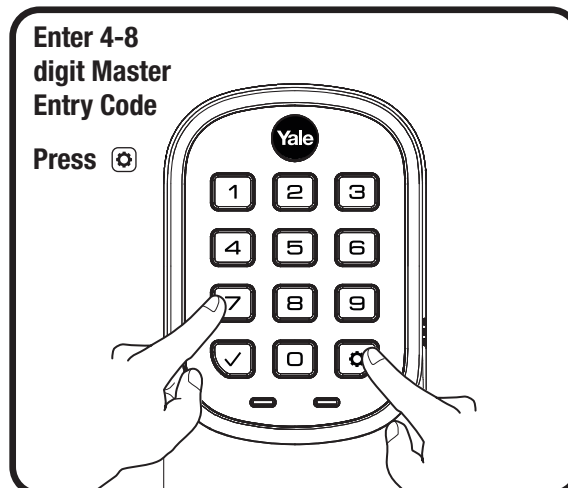
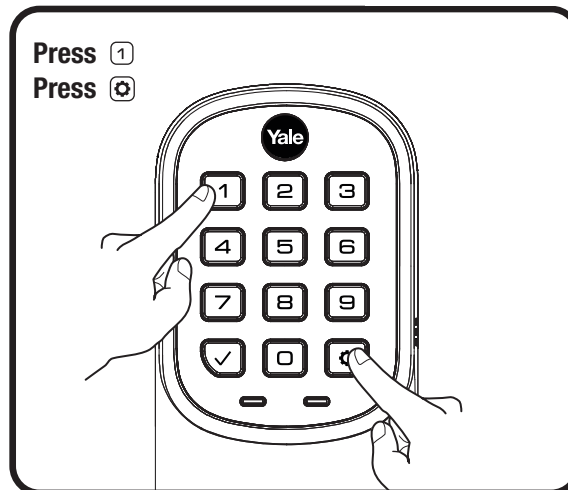
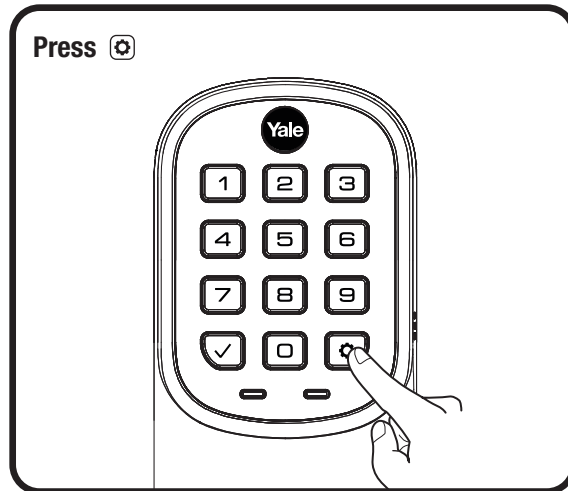
***NOTE TO INSTALLER AND CONSUMER**

While Yale® has included several features to prevent lockout (9-Volt battery jumper, low battery warnings), it is still possible for a lockout situation to occur. Because the YRL236 does not have a key, Yale® recommends using YRL236 in an environment where there are additional entry points into dwelling.

1

Creating Master Entry Code

Creating a Master Entry Code must be performed upon installation or after resetting the lock to factory default. Programming and use of lock is not possible until this step has been successfully completed.

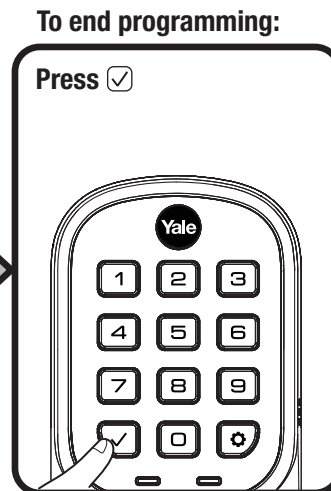
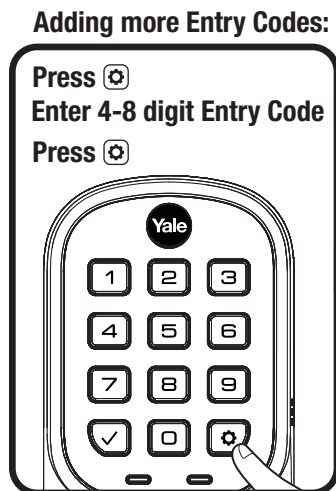
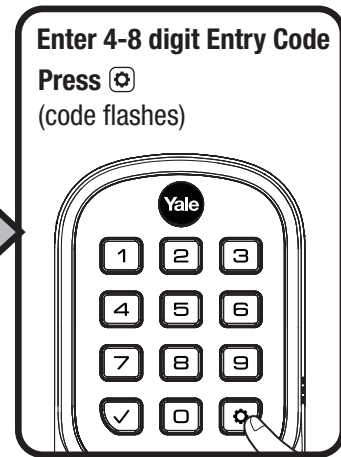
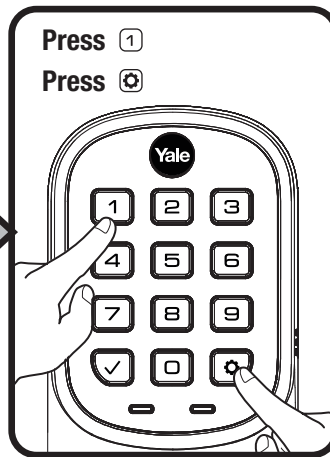
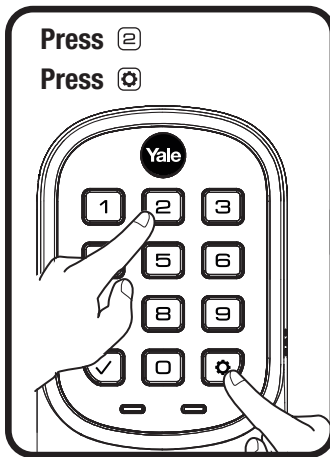
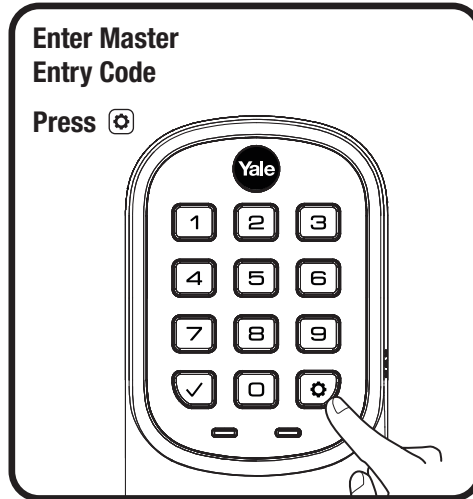


2

Creating Entry Codes

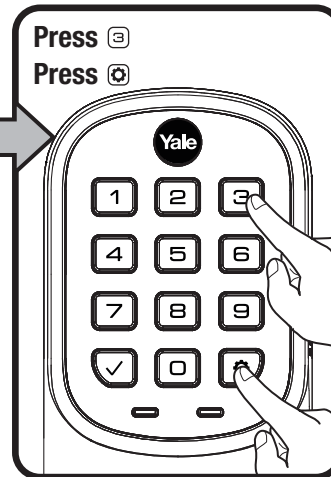
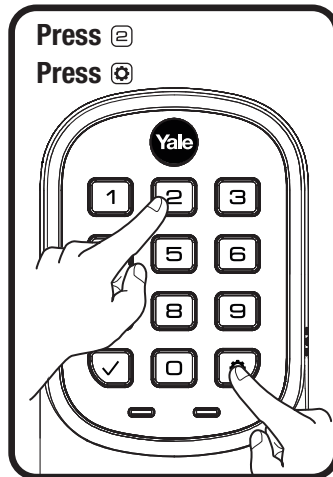
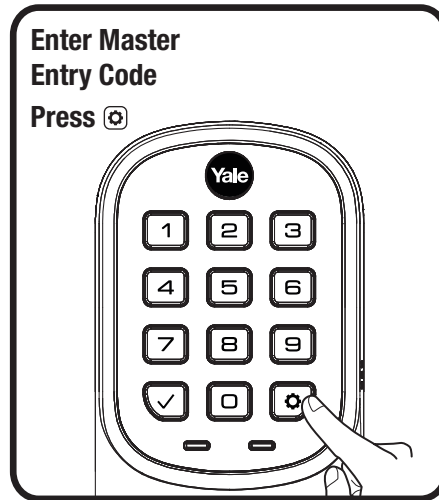
Master Entry Code must be created first.

*Max Entry Codes = 250 with Smart Module and 25 without.



3

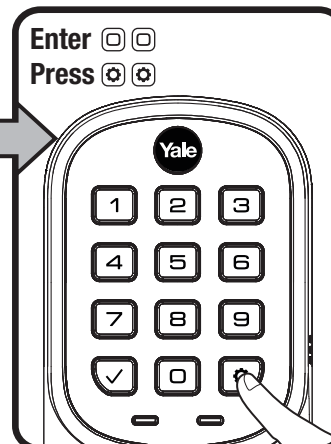
Deleting Entry Codes



Deleting one Entry Code:

To delete one Entry Code, you must enter the Entry Code you wish to delete.

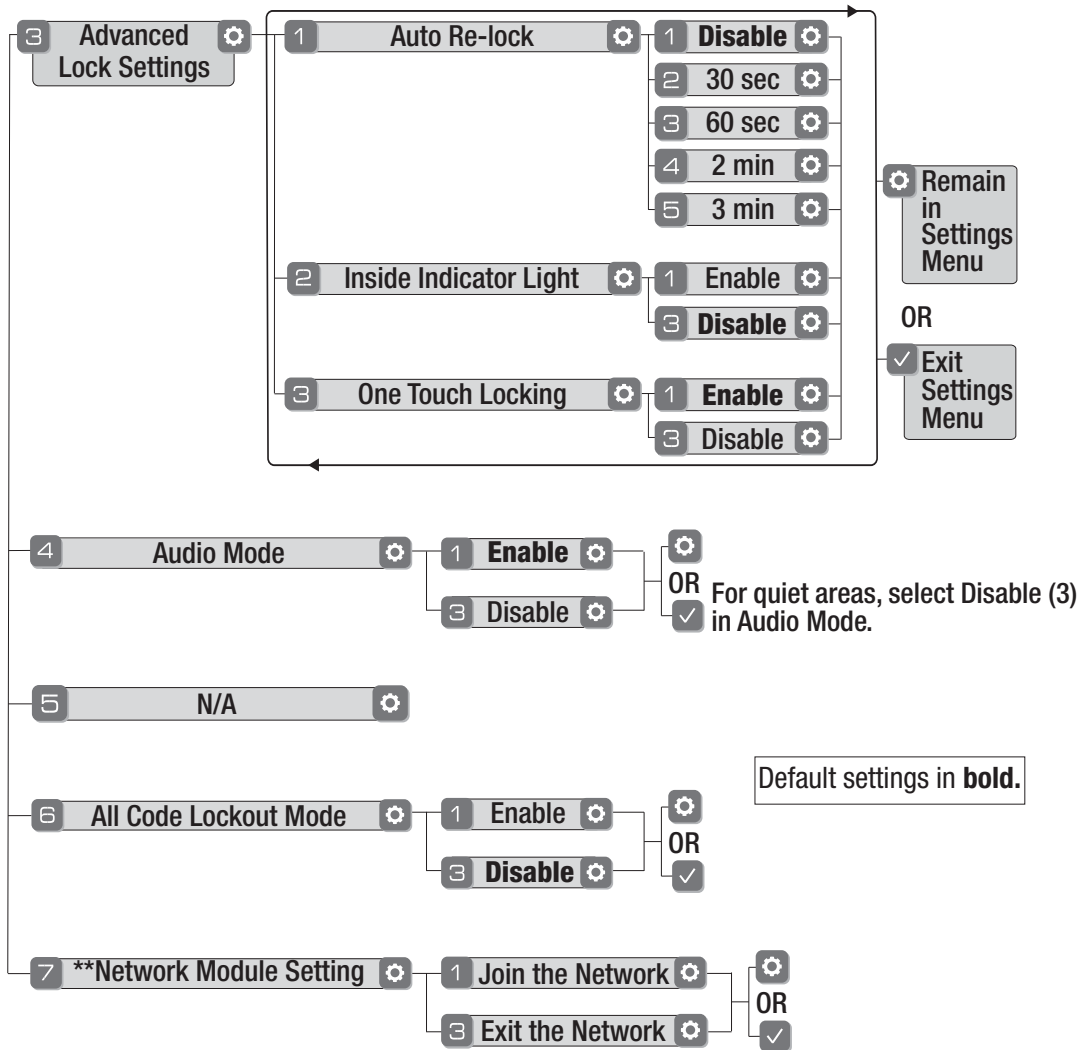
To delete all Entry Codes (Does not delete Master Entry Code):







Customizing Lock Through Settings Menu

*Master Entry Code Required







1. Press any key to wake lock.
2. Enter Master Entry Code* followed by .
3. Enter digit corresponding to the function to be performed followed by the .



Here is an example of how to set Auto Lock to 30 seconds:
 Master Entry Code , 3 , 1 , 2 ,

*The Master Entry Code must be created prior to any other programming of the lock.
 **Network Module Setting function appears only with Yale Smart module installed.

Programming Troubleshooting

| Symptom | Suggested Action |
|--------------------------------------------------------------------------------------------------------------------------------------------------------------------------------------------------------------------|------------------------------------------------------------------------------------------------------------------------------------------------------------------------------------------------------------------------------------------------------------------------------------------------------------------------------------------------------------------------------------------------------------------------------------------------------------------------------------------------------------------------------------------------------------------------------------------------------------------------------------------------------------------------------------------|
| Lock does not respond – door is open and accessible. | <ul style="list-style-type: none"> • Press each keypad button for response when pressed. • Check batteries are installed and oriented correctly (polarity) in the battery case. • Check batteries are in good condition; replace batteries* if batteries are dead. • Check that keypad cable assembly is fully connected and not pinched. |
| Lock does not respond – door is locked and inaccessible. | <ul style="list-style-type: none"> • Batteries may not have enough power. Replace batteries*. • Apply a 9V battery to terminals below the keypad for backup power option. |
| Unit is on for a while then shows no reaction. Lights dim. | <ul style="list-style-type: none"> • Batteries do not have enough power. Replace batteries*. |
| Unit chimes to indicate code acceptance, but the door will not open. | <ul style="list-style-type: none"> • Check the door gaps for any foreign objects between door and frame. • Check that the cable is firmly connected to the interior lock. |
| Unit operates to allow access, but will not automatically re-lock. | <ul style="list-style-type: none"> • Check to see if Auto Re-lock is enabled. • Disable Auto Re-lock to lock the door (manually). • If low battery indicator is lit, change batteries*. |
| Entry Code cannot be added. | <ul style="list-style-type: none"> • Entry Codes must consist of 4 to 8 digits. • Entry Code has already been added or maximum number of codes has been reached. • Management of Entry Codes is set by the authority of the Master Code, which is set first. Contact the Master user. • Entry Codes must be entered within 5 seconds (while keypad is active) or process will have to be restarted. • Check  or gear  cannot be used as part of the Entry Code. |
| Upon entering an Entry Code and pressing  key, the lock gives a series of beeps, flashes red 7 times, and does not unlock. | <ul style="list-style-type: none"> • Verify entered code is a valid, previously programmed, 4 to 8 digit code. • All Code Lockout Mode is enabled. Only the Master Entry Code can enable/disable All Code Lockout Mode. Contact the Master user. |
| Upon entering an Entry Code and pressing the  key, the lock gives a series of beeps. | <ul style="list-style-type: none"> • Check to see if the lock is set to All Code Lockout Mode. • Setting/managing All Code Lockout Mode is done through Master Entry Code only. Contact the Master user. |
| The unit operates, but it makes no sound. | <ul style="list-style-type: none"> • Enable Audio Mode |
| The Yale logo displays intermittent RED flashes. | <ul style="list-style-type: none"> • This is the alert to replace the batteries. Replace all four (4) batteries* with new AA Alkaline batteries. |
| Upon entering an Entry Code and pressing the  key, the unit responds with a series of beeps and the keypad flashes three times. | <ul style="list-style-type: none"> • The digits entered were incorrect or incomplete. Re-enter the correct code followed by the check  key. |

* When batteries are replaced, Smart Module locks have a real time clock that will be set through the User Interface (UI); it is recommended to verify correct date and time particularly those locks operating under Daylight Saving Time (DST).

FCC:*Class B Equipment*

This equipment has been tested and found to comply with the limits for a Class B digital device, pursuant to Part 15 of the FCC Rules. These limits are designed to provide reasonable protection against harmful interference in a residential installation. This equipment generates, uses, and can radiate radio frequency energy and, if not installed and used in accordance with the instructions, may cause harmful interference to radio communications. However, there is no guarantee that interference will not occur in a particular installation. If this equipment does cause harmful Interference to radio or television reception, which can be determined by turning the equipment off and on, the user is encouraged to try to correct the interference by one or more of the following measures:

- Reorient or relocate the receiving antenna.
- Increase the separation between the equipment and receiver.
- Connect the equipment into an outlet on a circuit different from that to which the receiver is connected.
- Consult the dealer or an experienced radio/TV technician for help.

Warning: Changes or modifications to this device, not expressly approved by **ASSA ABLOY Residential Group** could void the user's authority to operate the equipment.

Industry Canada:

This Class A digital apparatus meets all requirements of the Canadian Interference Causing Equipment Regulations.

Cet appareillage numérique de la classe A répond à toutes les exigences de l'interférence canadienne causant des règlements d'équipement.

Yale Home

Product Support Tel 1-855-213-5841 • www.yalehome.com

Yale® and Assure Lever® are registered trademarks of ASSA ABLOY Residential Group.

Other products' brand names may be trademarks or registered trademarks of their respective owners and are mentioned for reference purposes only.

© Copyright 2020 All rights reserved. Reproduction in whole or in part without the express written permission of ASSA ABLOY Residential Group is prohibited.