

Strong Arm Park ™



Premium Security and Reliability



Superior revenue control support

StrongArmPark™

HySecurity's advanced HyProtect™ breakaway barrier arms provide reliable and uninterrupted traffic control in high-capacity corporate parking lots, low clearance garages, gated communities and rental car facilities. StrongArmPark DC easily partners with large and small scale revenue control systems.

Revenue Control Benefits

- Accurate vehicle counts
- Protect your revenue stream – continuous duty even after AC power loss
- Reduce vehicle damage liability – lighted arm, resilient bumper, breakaway arm bracket, kill switch, integrated traffic light

Parking Management Benefits

- Loop activated or time-specific open and close
- Easy to configure to site specific requirements
- Numerous relay functions available
- Solar power option



Protect your revenue stream —standard UPS feature allows continuous duty after AC power loss*



Intelligent charging system, monitors battery condition to maximize battery life



Easy to configure numerous functions including parking specific options



Highly visible lighted arm and resilient bumper protects vehicles and pedestrians



Real time system security alerts with optional HyNet™ Gateway



In case of vehicle strike, arm breaks away and arm motion stops, protecting pedestrians, facility and operator/arm

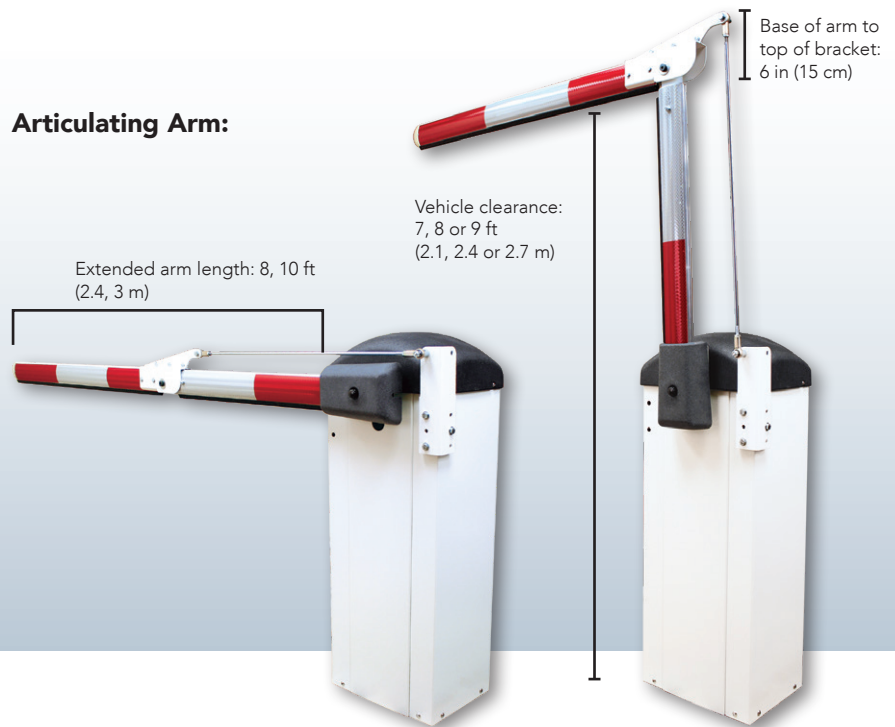


Accurate vehicle counts

All StrongArmPark DC barrier arms provide these safety features

- Resilient bumper along base reduces possibility of injury or vehicle damage
- Highly reflective red/white stripe tape
- Dynamic reversing feature in operator greatly reduces the possibility of injury or vehicle damage

Articulating Arm:



HYSECURITY ALUMINUM STRAIGHT ARMS

Strong, durable, heat resistant arm up to 14 ft (4.3 m)

- Available in 8, 9, 10, 12, and 14 ft (2.4, 2.7, 3, 3.7 and 4.3 m) lengths. Arms, lights and bumper can be field trimmed to fit unique lengths
- Bright, highly visible LED lights across the top of arm decreases likelihood of vehicle strikes

HYSECURITY ALUMINUM ARTICULATING ARMS

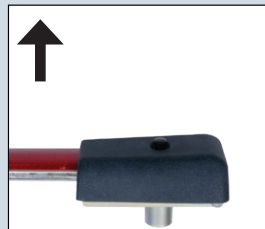
The articulating arm is ideal for low clearance garages

- Available in 7 ft clear/8 ft extended, 8 ft clear/10 ft extended or 9 ft clear/10 ft extended (2.1 m/2.4 m, 2.4 m/3 m, 2.7 m/3 m)
- Lighted arm optional

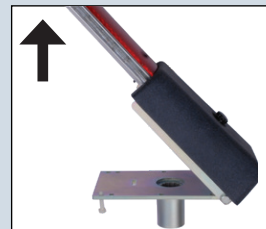
HyProtect™ Breakaway Arm Bracket

Every StrongArmPark DC operator includes an advanced HyProtect™ breakaway arm bracket and kill switch, which may reduce the cost of arm or operator damage due to vehicle strike

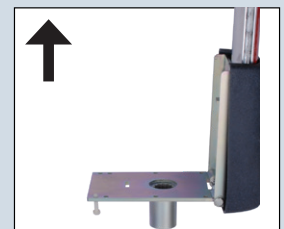
The breakaway arm bracket adapts easily to typical aftermarket arms such as 1 x 4 inch wood or 2.5 inch square PVC.



If vehicle strikes arm...



nylon bolts in the HyProtect breakaway arm bracket break...



allowing arm to swing out of the way.

Parking and Traffic Control




Parking Barrier
Arm Gate

SYSTEM DESIGN SUPPORT: Contact Nice/HySecurity for help with custom site requirements, CAD drawings, tech manuals or other specifications support.

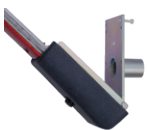
VISIT WWW.HYSECURITY.COM for installation manuals, parts diagrams, wiring diagrams, specifications, image gallery, videos, training and much more.

4 StrongArmPark™ DC Models, AC or Solar

| Standard | StrongArmPark DC 10 | StrongArmPark DC 14 |
|---|--|--|
| Solar  | StrongArmPark DCS 10 | StrongArmPark DCS 14 |
| Arm Length Max. | up to 10 ft (3 m) | 10, 12, 14 ft (3, 3.7, 4.3 m) |
| Field adjustable Open/Close Time | 3 speeds: 1.5/2/2.5 seconds | 3 speeds: 2.5/3/3.5 seconds |
| Full Open Angle | Arm full open angle: Adjustable 90° ± 10° | |
| Handing | Left handing standard. Easy to convert to right handing in field | Left handing standard. Right handing available |
| Arm Design | Aluminum arm with bumper, lights, HyProtect™ breakaway arm bracket & kill switch | |
| | Articulating aluminum arm with bumper, HyProtect™ breakaway arm bracket & kill switch; 7 ft clear/8 ft extended (2.1 m/2.4m) 8 ft clear/10 ft extended (2.4 m/3 m) 9 ft clear/10 ft extended (2.7 m/3 m) Lights optional | |
| | Attachment plates available for 1"x 4" (2.5 x 10 cm) wood and 2.5" (6 cm) square PVC | |
| Duty Cycle | Continuous | |
| Drive | Electromechanical | |
| UPS Battery Backup Cycles* | Two 12V, 8Ah batteries. Operates for thousand plus cycles after AC power loss.* Field configurable to fail open or secure when batteries deplete. | |
| Operating Voltage | 24VDC | |
| Input Voltage | 115VAC, 3A, 60/50Hz or 208-230VAC, 1.5A, 60/50Hz Solar: 24VDC solar panels | |
| Accessory Power | 12VDC and 24VDC 1A each | |
| Temperature Rating | -13° F to 158° F (-25° C to 70° C) | |
| Communication | USB, RS-232, RS-485, Ethernet/fiber using optional HyNet™ Gateway accessory | |
| User Controls | Smart DC Controller with 70+ configurable settings. 32 character LCD display and 5 tact buttons or a PC using S.T.A.R.T. software. | |
| Relays | One configurable user relay: 250VAC, 10A electromechanical. Optional Hy8Relay™ for 8 additional relay outputs. | |
| Finish | Zinc plated with powder coating | |
| ETL Listed (UL 325) | Usage Class I, II, III, IV | |
| Cycle Tested | 2 million cycles | |
| Warranty | 2 years | |

* The actual number of arm cycles available from battery depends on arm length/weight, battery size, state of charge and health, ambient temperature, accessory power draw and frequency of arm cycles during power outage.

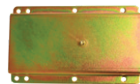
Optional Accessories - See website for complete list



HyProtect™
Breakaway Bracket



Square PVC Arm
Attachment Plate



Wood Arm
Attachment Plate



Hy5B™ Vehicle
Detector



Hy8Relay™
Module



HyNet™ Gateway
Integration



Remote Power Supply
Kit



Contact Nice/HySecurity for an operator/parts distributor near you.
phone 253-867-3700 | 800-321-9947
www.hysecurity.com | sales@hysecurity.com



D0580 082619